

## DEFINITIONS USED FOR THE QUARTERLY SCHEDULE OF PROPOSED ACTIONS

If you've received previous editions of this list you'll notice that some projects don't appear anymore. That's because we've finished the analysis, made the decision, and the appeal period (if applicable) has ended. In other cases, we've removed the projects from the list because we're unable to pursue them for various reasons (lack of funding, conflicts with other forest priorities, etc.). Please call the person listed as the "contact" for a project anytime you have a question.

This list is not inclusive. Some projects may come up after publication that requires our immediate attention, and we may complete the decision document before the next edition.

At the top of each table we have listed the Ranger District, their address, and the "Newspaper of Record" (used by the District for legal notices of decisions, and scoping of projects).

The following items describe the column headings and contents in the tables that follow, beginning on the left side of the table.

**MAP KEY:** Identifies a number that goes with the attached small forest map to show the general location of the project.

**TYPE OF PROJECT:** Identifies the Resource Program area that's affected. Acronyms used are:

Mgmt - management  
Exchg - Exchange

**PROJECT NAME:** Identifies the name of the environmental document. Also included is a general description of the project, such as estimated timber volume, acres proposed for treatment, acres involved with a land exchange, etc. Acronyms used are:

EIS - Environmental Impact Statement	WL - Wildlife
BPA - Bonneville Power Administration	OSR - Overstory Removal
ORV - Off Road Vehicle	Salv - Salvage
MMBF - Million board feet	LE - Land Exchange
MBF - Thousand board feet	CCF-Hundred cubic feet
RUP-Road use permit	

**LOCATION:** Identifies both legal land description, and the drainage or other identifying on-the-ground feature. If a project is located within an inventoried roadless area, it is also noted here. Acronyms used are:

T - Township                      R - Range                      S - Section

**NEPA STATUS:** Identifies where we are and will be in the NEPA process during the next three months. This corresponds to the table "Project Planning Process". If several items are listed, it means we'll be moving through several stages of the planning process in the next three months. NOI means Notice of Intent that is published in the Federal Register.

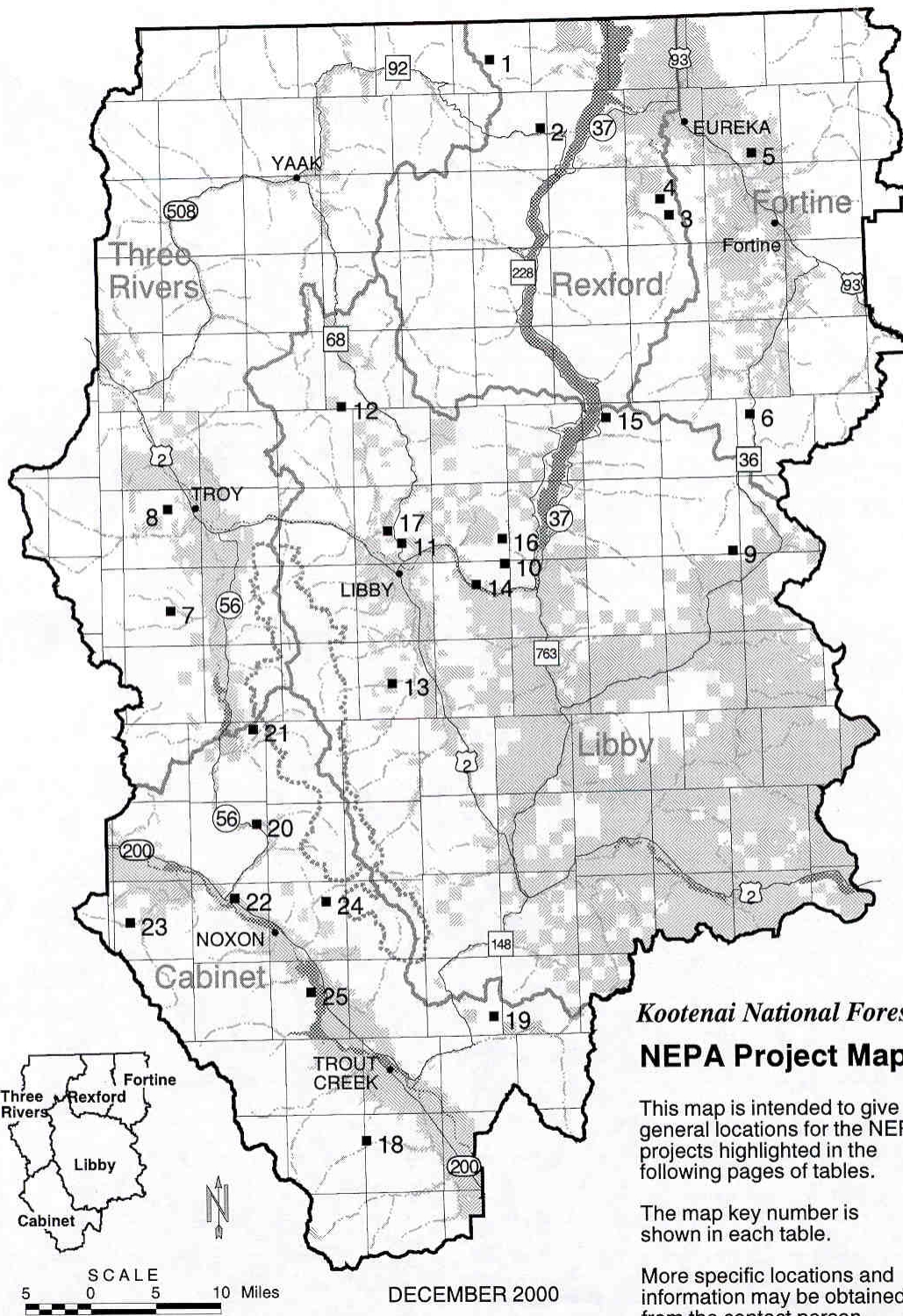
**ANTICIPATED DECISION DATE:** This is the best estimate of when the NEPA analysis will be completed. Sometimes we're not able to meet the date for various reasons, but the schedule will be validated and updated each time we send it out.

**YEAR ACTIVITY TO START ON THE GROUND:** This is the best estimate of when ground disturbing activities would occur and/or contracts or permits would be offered.

**CONTACT PERSON:** This is the person at the Ranger District or Forest to contact for further information regarding the project.

## THE PROJECT PLANNING PROCESS & WHERE YOU MIGHT FIT

ANALYSIS STEP	PARTICIPATION OPTIONS
Identify need for project - Forest Service, business or individual suggests a project	Bring need for a project to the attention of Forest Service
Develop detailed project proposal (Forest Service or other project proponent)	Develop project proposal
Scoping - solicit public comment on the proposal (how it might affect forest resources & uses; how the project could be done better). This defines the scope of environmental analysis needed and the range of alternatives that should be considered	Comment on proposal - suggest issues, alternatives or mitigation measures to reduce impacts on the environment
Develop range of alternatives based on the issues raised during scoping. One alternative is to stay with the status quo (No Action)	Suggest variations to the original proposal
Initiate public comment process which includes a 45 day comment period for Draft EIS's and 30 day comment period for EA's and timber sales that can be categorically excluded. A copy of the EIS or EA will be mailed to those who requested a copy and to those who have participated in the environmental analysis process. A legal notice, requesting comments, will be published in the Daily Interlake, Kalispell, MT, which is our newspaper of record (36 CFR 215.5)	Provide comments on the environmental analysis. See 36 CFR 215.6 for description of information to provide
Notice of decision will be published in the newspaper of record. Copies of the decision document will be sent to those who submitted comments on the proposed action either before or during the comment period identified above (36 CFR 215.9)	Review decision: exercise option to appeal through administrative process
Appeal period will be open for 45 days following legal notice of decision in the newspaper except if no one expressed interest and there is no change from the proposed action. (36 CFR 215.10)	File Notice of Appeal (see section 36 CFR 215.14 for contents of an appeal) NOTE: Only those who commented through the process described above or expressed interest will be able to appeal. (36 CFR 215.11)
Implement the project	Contribute labor, equipment or funding
Monitor & evaluate project results	Provide feedback on the project



## QUARTERLY SCHEDULE OF PROPOSED ACTIONS - DECEMBER 2000

**REXFORD RANGER DISTRICT**, 1299 Highway 93 North, Eureka, MT 59917 - Phone: 406-296-2536, Fax: 406-296-2588 **NEWSPAPER OF RECORD: *DAILY INTERLAKE*, Kalispell, MT**

MAP KEY	TYPE OF PROJECT	NAME OF PROJECT	LOCATION	NEPA STATUS	ANTICIPATED DECISION DATE	YEAR ACTIVITY TO START ON GROUND	CONTACT PERSON
1	Timber Sale, Prescribed Burning, Watershed Restoration	Young J	T37N, R29W, PMM, Lincoln Co., MT; Young Creek drainage.	Seeking Public Comment	July 2001	2001	Ron Komac
2	Timber Sale, Prescribed Burning, Thinning, Watershed Restoration	Gold/Boulder/Sullivan	T34-36N, R28, 29W, PMM, Lincoln Co., MT; Gold, Boulder, and Sullivan drainages. May include road decommissioning. Includes Forest Plan Amendments	Seeking Public Comment.	September 2001	2001	Ron Komac
3	Timber Sale, Prescribed Burning, Watershed Restoration	Pink Stone EIS	T 34-36N, R27-29W, PMM, Lincoln Co., MT: Pinkham Creek drainage, may include road decommissioning. Includes Forest Plan Amendments.	Seeking Public Comment	September 2001	2001	Ron Komac
4	Mineral Material Source	Virginia Hill Quarry	T35N, R27W, Sec 16. Virginia Hill Area	Developing Alternatives	January 2001	2001	Jennifer Swan

**FORTINE RANGER DISTRICT**, P.O. Box 116, Fortine, MT 59918 - Phone: 406-882-4451, Fax: 406-882-4835 **NEWSPAPER OF RECORD: *DAILY INTERLAKE*, Kalispell, MT**

MAP KEY	TYPE OF PROJECT	NAME OF PROJECT	LOCATION	NEPA STATUS	ANTICIPATED DECISION DATE	YEAR ACTIVITY TO START ON GROUND	CONTACT PERSON
5	Timber Sale	Foothills Management Project EA; 4232-5737 CCF (1.8-2.4 MMBF)	T36N, R26W, Sections 15, 17, 20, 23, 27, 28, 33 and 34; T35N, R26W Sections 2, 3, 4, 10 and 11. Proposes road decommissioning.	Decision Pending	December 2000	2001	Toby Spribille
6	Timber Sale	Fortine Timber Sales and Associated Activities EIS; 22000-46000 CCF (9-19 MMBF)	T33N, R26W, Sec. 21-22, 27-29, 31-35; T32; T32N, R28W. Sections 3-11, 14-36; T32N, R27W, Sections 1-2, 11-14, 23-26; T31N, R26W, Sections 3-5, 8-10, 15, and 16.	Developing Proposal	September 2001	2002	Joleen Dunham
*	Special Uses	Re-Issuance of Special Use Permit; Lincoln Electric Co-op, Inc.	Rexford, Fortine, and Libby Ranger Districts	Seeking Public Comment	December 2000	2000	Steve Gauger

**THREE RIVERS RANGER DISTRICT**, 1437 N. Highway 2, Troy, MT 59935 - Phone:406-295-4693, Fax: 406-295-4142 **NEWSPAPER OF RECORD: DAILY INTERLAKE**, Kalispell, MT

MAP KEY	TYPE OF PROJECT	NAME OF PROJECT	LOCATION	NEPA STATUS	ANTICIPATED DECISION DATE	YEAR ACTIVITY TO START ON GROUND	CONTACT PERSON
7	Timber Sale, Prescribed Burning, Thinning, Watershed Restoration	Spar and Lake Subunits Forest Health Project	T28N - T31N, R33W and 34W, PMM, Lincoln Co., MT; Iron, Keeler, Twilight, Stanley, Ross, Camp, Madge, Spring, and Noggle drainages. Includes road decommissioning. Prescribed burning activities are proposed within the Scotchman Peaks Inventoried Roadless Area and/or proposed wilderness area. Includes Forest Plan Amendments.	Decision Pending	2001	2001	Kathy Mohar
8	Timber Sale	Troy Beetle Salvage	Sec. 20, T34N, R34W; Sec. 32, 33, T34N, R33W; Sec. 20, 31, 32, T33N, R33W; Sec. 3, 10, 15, T33N, R34W; Sec. 16, 18-20, 29, T32N, R33W; Sec. 13, T32N, R34W; Sec. 2, T32N, R35W; Sec. 2, 4, 9, T31N, R33W; Sec. 1, 12, T31N, R32W; Sec. 2, 3, 10, 11, 14, 15, 23, 24, 26, T31N, R34W; Lincoln County, Montana; and Sec. 10, T60N, R3E, Boundary County, Idaho. Includes Forest Plan Amendment.	Decision Pending	2001	2001	Kathy Mohar

**LIBBY RANGER DISTRICT: Canoe Gulch RS**, 12557 HWY 37, Libby, MT 59923 Phone: 406-293-7773, FAX: 406-293-5758 **NEWSPAPER OF RECORD: DAILY INTERLAKE**, Kalispell, MT

MAP KEY	TYPE OF PROJECT	NAME OF PROJECT	LOCATION	NEPA STATUS	ANTICIPATED DECISION DATE	YEAR ACTIVITY TO START ON GROUND	CONTACT PERSON
9	Timber Sale	Sheppard Salvage 2930 CCF (1.2 MMBF). Includes 3.85 miles of road decommissioning.	T31N, R27W, Section 36, T31N, R26W, Section 31, T30N, R26W, Sections 3,4,9,10, & 15. Sheppard Mountain area.	Decision Signed 10/3/00	Completed	2001	Kirsten Kaiser
10	Timber Sale	Alexander 5364 CCF (2.2 MMBF). Includes Forest Plan ORD and cavity habitat amendments, prescribed burning in the Alexander Inventoried Roadless Area, 12 miles of road decommissioning, .2 miles of temporary road construction and .70 miles of road construction on FS lands to access private lands and facilities.	T31N, R29W, Sections 7-9,16-21,28-33; T31N, R30W, Sections 3,4,9-11,13-17,20-29,32-36;T30N, R30W, Sections 1-5,9-15; T30N, R29W, Sections 5-8,17,18; T32N,R30W, Sections 32-34. Alexander and Rainy Creek drainages.	Decision Signed 10/30/00	Completed	2001	Kirsten Kaiser
11	Timber Sale	Sheldon Heights 6340 CCF (2.6 MMBF). Road construction (.37 miles) on FS lands to access private lands and FS treatment area. Road access change.	T31N, R30W, Sections 20, 29,30; T31N, R31W, Sections 10,11,14,15,16,21-27,34. Sheldon Mountain area.	EA out for Public Comment 11/9/00.	January 2001	2001	Kirsten Kaiser

**LIBBY RANGER DISTRICT: Canoe Gulch RS, 12557 HWY 37, Libby, MT 59923 Phone: 406-293-7773, FAX: 406-293-5758 NEWSPAPER OF RECORD: DAILY INTERLAKE, Kalispell, MT**

12	Timber Sale	Pipestone 17,800 CCF (7.3 MMBF). May include Forest Plan ORD amendment, openings greater than 40 acres, prescribed burning in the Gold Hill West Roadless Area, 56 miles of road decommissioning and road construction.	T34N, R32W, Section 36; T34N, R31W, Sections 11,14,15,21-36; T34N, R30W, Section1; T33N, R32W, Sections 1,12,23-5,36; T33N, R31W, Sections 1-36; T33N, R30W, Sections 18-20,29-33; T32N, R32W, Sections 1,12-13,24,25,36; T32N,R31W,Sections 1-36; T32N, R30W, Sections 5-10,15-21,29-32; T31N, R31W, Sections 1-22,29,30; T31N, R30W, Sections 4-9,17, 18. Pipe Creek area.	Developing Alternatives	October 2001	2001	Kirsten Kaiser
13	Recreation	Flower Creek parking lot expansion.	T30N, R31W, Section 21. Flower cross country Ski area.	Seeking Public Comment	May 2001	2001	Jon Jeresek
14	Minerals	Re-Reg. Mineral material removal associated with boat ramp, parking and restroom construction.	T30N, R30W, Section 10. Adjacent to Highway 37 at the 8.7 mile post.	Seeking Public Comment	April 2001	2001	Bobbi Lacklen
*	Minerals	Mineral Material Sources. Expansion and reclamation of 79 existing gravel pits.	Libby Ranger District	Analyzing Effects	July 2001	2001	Bobbi Lacklen
15	Special uses	Bonneville Power Association (BPA) Road Access. Includes 1/4 mile road construction.	T31N, R30W, Section 25. Alexander Creek area.	Decision pending	February 2001	2001	Dick Harlow
16	Special uses	Pipe Creek Private Road Reconstruction of 1 mile of existing road on FS lands.	T31N, R31W, Section 21. Pipe Creek area.	Decision Pending	February 2001	2001	Dick Harlow
17	Special uses	Spring Creek road access Includes 1/4 mile road construction.	T32N, R28W, Section 5. Volcour Gulch area.	Seeking Public Comment	July 2001	2001	Dick Harlow

**CABINET RANGER DISTRICT, 2693 Highway 200, Trout Creek, MT 59874 - Phone: 406-827-3533, Fax: 406-827-3203** **NEWSPAPER OF RECORD: DAILY INTERLAKE, Kalispell, MT**

MAP KEY	TYPE OF PROJECT	NAME OF PROJECT	LOCATION	NEPA STATUS	ANTICIPATED DECISION DATE	YEAR ACTIVITY TO START ON GROUND	CONTACT PERSON
18	Timber Sale	Whitepine Creek EIS 33,000 CCF (15MMBF). Project includes up to 52 miles road decommissioning. Possible Forest Plan amendments for management of old growth, open road densities, cavity nesting habitat. May include Regional Forester approval of openings over 40 acres. NOI published April 23, 1999.	T22N, R32W, Sec 4,5: T23N, R31W, Sec 3-11, 14-24, 27-30: T23N, R32W, Sec 1-3, 10-17, 20-29, 31-34: T24N, 31W, Sec 31-33: T24N, R32W, Sec 24-26, 35, 36. Whitepine Creek Drainage south of the town of Trout Creek.	Draft EIS expected January 2001	June 2001	2001	John Gubel
19	Special uses	Spring Creek road access Includes 1/4 mile road construction.	T32N, R28W, Section 5. Volcour Gulch area.	Seeking Public Comment	July 2001	2001	Dick Harlow
20	Recreation	Berray Mountain Trail #967 Reroute Construction (1/2 mile)	T27N, R33W, Sec 12 Snake Creek Pass area.	Analyzing Effects	February 2001	2001	Bruce Haflich
21	Recreation	Northfork Bull/ Middle Fork Bull Trailhead Expansion	T28N, R33W, Sec 1 & 11, Bull River Area.	Analyzing Effects	June 2001	2001	Bruce Haflich
22	Recreation	Bull River Campground Riverbank Stabilization	T28N, R33W, Sec 1 & 11, Bull River Area.	Scoping Complete, Decision Pending	June 2001	2001	Bruce Haflich
23	Special Uses	West Fork Elk Creek Telephone Line	T26N, R34W, Sec 20	Seeking Public Comment	March 2001	2001	Bruce Haflich

**KOOTENAI SUPERVISORS OFFICE, 1101 US Hwy 2 West, Libby, MT 59923 - Phone: 406-293-6211, Fax: 406-293-6418** **NEWSPAPER OF RECORD: DAILY INTERLAKE, Kalispell, MT**

MAP KEY	TYPE OF PROJECT	NAME OF PROJECT	LOCATION	NEPA STATUS	ANTICIPATED DECISION DATE	YEAR ACTIVITY TO START ON GROUND	CONTACT PERSON
24	Minerals	STERLING; Copper/ Silver Mine	T26N, R32W; Rock Creek. Includes FP amendments	Responding to Comments	June 2001	2001	John McKay
25	Land Exchange	Crown Pacific Land Exchange	Portions of: T29N, R33W, Sec19; T31N, R34W, Sec 2; T34N, R34W, Sec 29;	Revising EA	February 2001	2001	Tom Grabinski
*	Fuels	Forestwide Fuels Reduction	Forestwide (site specific locations available upon request)	Revising EA	February 2001	2001	Jeff Scussel
*	Travel Management/ Forest Plan Amendment	BLM and FS Off-Highway Vehicle Forest Plan Amendment / EIS for MT, ND and Portions of SD	All BLM and FS lands in MT, ND and portions of SD excluding lands administered by Region 2 of the FS.	Draft EIS issued 11/15/99- Responding to Comments	December 2000	2001	Jerry Majerus BLM (406-538-1924)