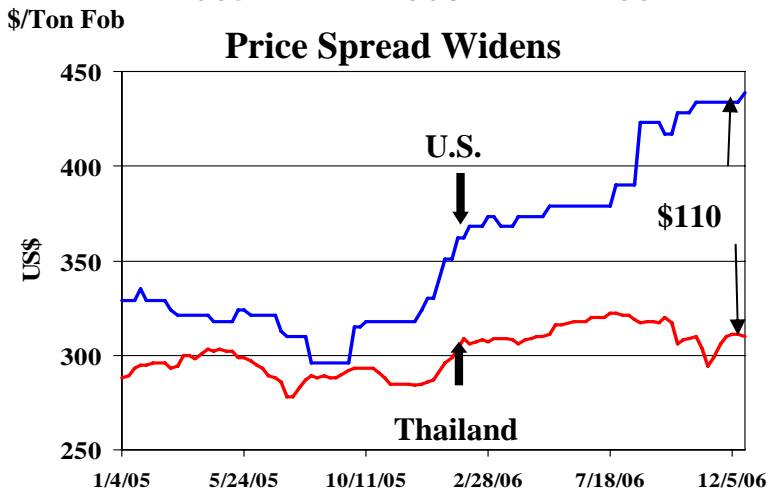
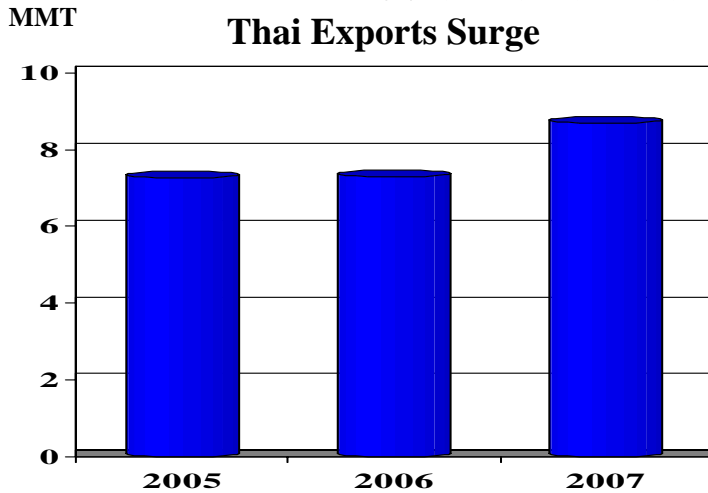




# Grain: World Markets and Trade

## Global Rice Trade in 2007: Thailand to Expand Lead as World's Largest Exporter



World rice supplies are expected to be tight in 2007, but despite this ample supplies in Thailand will allow it to widen its lead as the world's largest exporter. Intervention stocks are currently at high levels and the government has signaled that it intends to reduce them by selling more for export. This will allow Thai exporters to profit from strong Philippine and Indonesian demand. Exports to the EU could also increase given the need to replace U.S. rice sales which have been effectively banned. Vietnam's exports are expected to improve, despite press reports to the contrary, as a consequence of Indonesia's increased demand. U.S. exports are forecast to slightly decline due to tighter supplies and higher prices, despite strong world demand.

Global import demand will be driven by Indonesia, where imports are forecast to triple. A weak El Nino has led to dry conditions during sowing periods, impacting area rather than yield. Other factors also contributing to the falling area include seed and fertilizer problems and to pressures from land conversion to non-agricultural uses.

---

## **TABLE OF CONTENTS**

<b>World Markets and Trade: Commentary and Current Data</b>	
Wheat .....	4
Rice .....	11
Coarse Grains.....	17
<b>Historical Data Series for Selected Regions and Countries .....</b>	<b>40</b>
<b>Endnotes to Grain: World Markets and Trade .....</b>	<b>65</b>

### **Circular Modifications:**

The Foreign Agricultural Service (FAS) will update its production, supply and distribution database for cotton, oilseeds, grains and pulses along with its downloadable data sets at 9 a.m. on the day the World Agricultural Supply and Demand Estimates (WASDE) report is released. It is available on the FAS website (<http://www.fas.usda.gov/psdonline/>). This circular will be released at 9:30 a.m. on the same day. This is an effort to speed up FAS information dissemination to more closely coincide with the release of the WASDE. FAS will evaluate this earlier release process to determine if it should be made permanent in 2007.

## All Grain Summary Comparison

	Marketing Year	Wheat			Rice, Milled			Corn		
		2004/05	2005/06	2006/07	2004/05	2005/06	2006/07	2004/05	2005/06	2006/07
<b>Production</b>										
United States	(Jun-May)	58.7	57.3	49.3	7.5	7.1	6.2	299.9	282.3	267.6
Other		570.1	562.5	541.4	393.0	408.4	408.9	412.4	413.3	419.6
<b>World Total</b>		628.8	619.8	590.8	400.5	415.5	415.0	712.3	695.6	687.2
<b>Domestic Consumption</b>										
United States	(Jun-May)	31.8	31.2	31.3	3.9	3.8	3.9	224.6	231.7	241.6
Other		577.0	586.7	585.9	401.7	407.9	412.1	459.2	468.2	480.9
<b>World Total</b>		608.8	617.9	617.2	405.7	411.7	416.0	683.9	700.0	722.5
<b>Ending Stocks</b>										
United States	(Jun-May)	14.7	15.5	12.9	1.2	1.4	0.9	53.7	50.0	19.1
Other		136.7	131.9	109.0	76.9	79.1	76.8	77.1	75.0	67.3
<b>World Total</b>		151.4	147.4	121.8	78.1	80.4	77.7	130.8	125.0	86.4
<b>TY Imports</b>										
United States	(Jun-May)	1.9	2.3	3.1	0.4	0.6	0.6	0.3	0.2	0.3
Other		108.2	108.3	106.1	26.5	25.2	26.6	76.0	79.6	80.3
<b>World Total</b>		110.2	110.6	109.2	26.9	25.8	27.3	76.3	79.9	80.6
<b>TY Exports</b>										
United States	(Jun-May)	28.5	27.4	24.5	3.9	3.5	3.4	45.3	56.2	56.5
Other		84.6	86.2	87.1	25.1	24.2	25.5	31.1	26.9	26.5
<b>World Total</b>		113.1	113.7	111.6	29.0	27.7	28.9	76.5	83.1	83.0

Note: Consumption in this table has not been adjusted for differences in marketing year imports and exports differs from global totals shown elsewhere.

Marketing years for U.S. grains are: Wheat (Jun-May), Rice (Aug-Jul), Corn (Sep-Aug).

## WHEAT: WORLD MARKETS AND TRADE

### MONTHLY HIGHLIGHTS:

**U.S. Imports From Canada Continue to Climb:** U.S. imports this month were revised up to the highest level in 13 years. Canada has a large, better quality crop this year and imports into the U.S. are allowed to come in duty free. In recent months, Hard Red Spring and Durum wheats have primarily been imported. The United States is forecast to be a net importer of durum and products this year as production has fallen to a nearly 20-year low. Spring wheat supplies are also tight, with production down as a result of dryness in the Plains states.

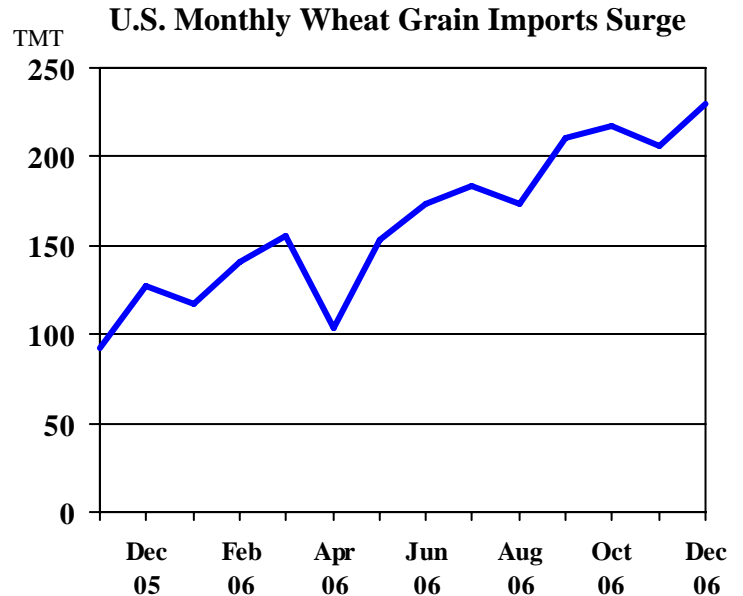
### **U.S. Winter Wheat Area Jumps:**

The total U.S. winter wheat seeding area is expected to rise 9 percent from the previous year because of elevated prices (10-year highs). Hard Red Winter (HRW) and Soft Red Winter (SRW) are expected to rise 9 and 13 percent respectively from last year. SRW particularly had ideal planting conditions.

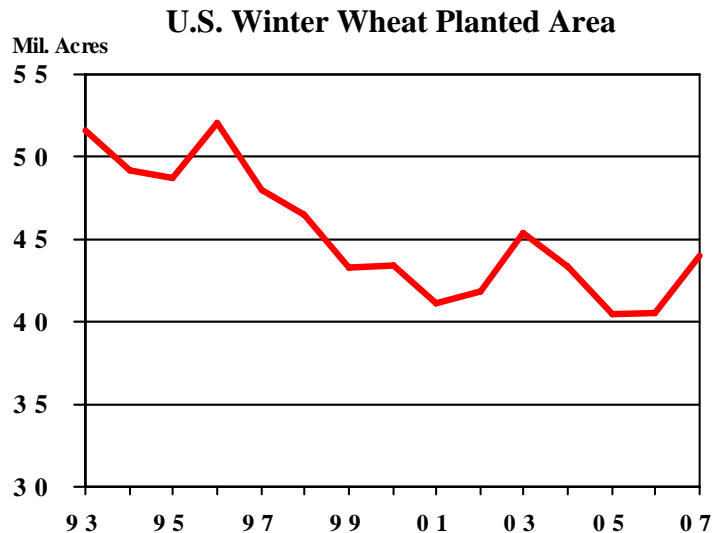
### **Australian Government Grants Two Wheat Export Permits:**

Agriculture Minister Peter McGauran announced on December 22, 2006 that he granted 2 permits for the export of 300,000 MT of wheat to Iraq by Wheat Australia and 500,000 MT to Indonesia by Cooperative Bulk Handling (CBH) Group, a grower owned and operated cooperative. The

government stated that it chose these two because: 1) CBH Group will offer a price premium to Western Australian farmers and 2) Wheat Australia keeps the Iraqi market open for Australian wheat since Iraq will not import wheat from the Australian Wheat Board (AWB) due to its involvement in the UN Oil-for-Food scandal. Currently, supporters of the single-desk believe it was unfair to authorize these export permits because it effectively dismantles the single-desk even before consultations begin between the government and industry over marketing options. Others argue that the decision merely perpetuates the single-desk. The Australian government expects a solution to the single-desk dilemma in May 2007.



Note: November and December are estimates



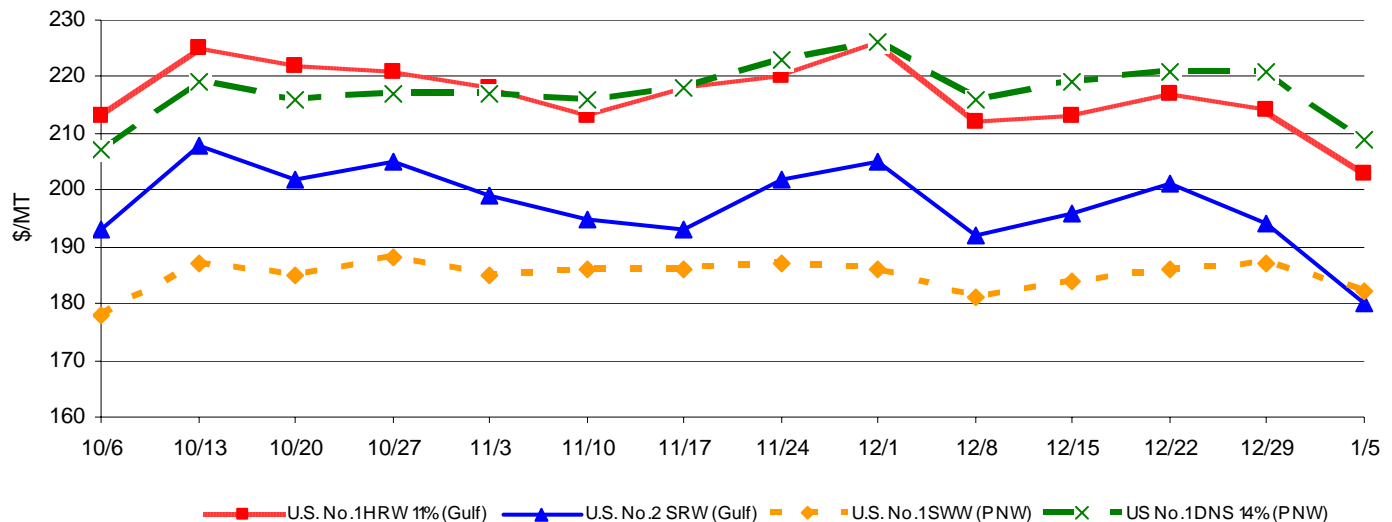
Source: NASS Note: Years refer to harvest

---

## PRICES:

**Domestic:** For December, wheat prices for all classes dropped during the month on very sluggish export sales and shipments as well as expectations for much larger global production in 2007. For the month, Soft Red Winter (SRW) prices fell \$25, Hard Red Winter (HRW) fell \$23, Hard Red Spring (HRS) fell \$17, and Soft White (SWW) prices fell \$4.

**U.S. Weekly FOB Export Bids**



## TRADE CHANGES IN 2006/2007

### Selected Exporters

- **Argentina** is up 500,000 tons to 10.0 million on very strong old crop exports.
- **EU-25** is down 500,000 ton to 15.5 million on tight supplies and sluggish exports licenses which are 1.5 million tons (20%) behind last year's pace to date.
- **Russia** is up 1.0 million tons to 9.5 million on higher production and very strong pace of exports to date.
- **Ukraine** is down 700,000 tons to 2.8 million on the imposition of government export quotas.
- **United States** is down 1.0 million tons to 24.5 million as high prices have resulted in laggard export sales and shipments to date.

---

### **Selected Importers**

- **Iraq** is down 500,000 tons to 3.0 million on sluggish buying patterns.
- **Pakistan** is down 400,000 tons to 200,000 becoming a net exporter as a result of sizeable domestic supplies.
- **United States** is up 300,000 tons to 3.1 million tons as a result of very large shipments from Canada.

**World Wheat, Flour, and Products Trade**  
**July/June Year, Thousand Metric Tons**

	2002/03	2003/04	2004/05	2005/06	2006/07 Dec	2006/07 Jan
<b>TY Exports</b>						
Argentina	6,276	7,346	13,502	8,301	9,500	10,000
Australia	10,946	15,096	15,826	15,213	12,000	12,000
Bulgaria	1,107	40	1,100	1,200	1,000	1,200
Canada	9,393	15,526	15,142	15,644	20,500	20,500
China, Peoples Republic of	1,718	2,824	1,171	1,397	2,500	2,500
EU-25	19,940	10,931	14,367	15,032	16,000	15,500
Kazakhstan, Republic of	6,238	4,110	2,700	3,000	5,000	5,000
Russian Federation	12,621	3,114	7,951	10,664	8,500	9,500
Turkey	839	854	2,217	2,900	2,000	2,000
Ukraine	6,569	66	4,351	6,461	3,500	2,800
Others	11,655	12,320	6,318	6,414	5,940	6,065
<b>Subtotal</b>	<b>87,302</b>	<b>72,227</b>	<b>84,645</b>	<b>86,226</b>	<b>86,440</b>	<b>87,065</b>
<b>United States</b>	<b>22,834</b>	<b>32,295</b>	<b>28,464</b>	<b>27,424</b>	<b>25,500</b>	<b>24,500</b>
<b>World Total</b>	<b>110,136</b>	<b>104,522</b>	<b>113,109</b>	<b>113,650</b>	<b>111,940</b>	<b>111,565</b>
<b>TY Imports</b>						
Algeria	6,079	3,933	5,398	5,469	4,800	4,800
Bangladesh	1,335	1,945	2,058	2,009	2,100	2,100
Brazil	6,631	5,559	5,309	6,194	7,500	7,500
Colombia	1,166	1,246	1,248	1,314	1,350	1,350
Egypt	6,327	7,295	8,150	7,771	7,000	7,000
EU-25	13,921	5,912	7,393	7,609	6,800	6,800
India	19	8	14	118	6,000	6,000
Indonesia	3,984	4,535	4,661	4,981	4,800	4,800
Iraq	1,579	1,925	3,010	4,878	3,500	3,000
Israel	1,691	951	1,549	1,542	1,200	1,200
Japan	5,579	5,751	5,744	5,469	5,500	5,500
Korea, Republic of	4,052	3,434	3,591	3,884	3,600	3,600
Libya	1,421	1,057	1,508	1,639	1,500	1,500
Malaysia	1,195	1,329	1,412	1,216	1,350	1,350
Mexico	3,161	3,644	3,717	3,549	3,600	3,600
Morocco	2,720	2,414	2,272	2,418	1,900	1,900
Nigeria	2,304	2,383	3,014	3,656	3,600	3,600
Peru	1,157	1,488	1,449	1,656	1,500	1,500
Philippines	3,230	2,975	2,593	2,954	2,700	2,700
Russian Federation	1,045	1,026	1,197	1,282	1,200	1,200
Sudan	860	995	1,522	1,659	1,600	1,600
Thailand	895	1,139	1,081	1,174	1,200	1,200
Venezuela	961	1,538	1,504	1,691	1,600	1,600
Vietnam	875	830	1,226	1,181	1,300	1,300
Yemen	1,772	1,635	1,853	2,143	1,900	1,900
Others	31,814	35,029	35,750	30,803	27,920	27,520
<b>Subtotal</b>	<b>105,773</b>	<b>99,976</b>	<b>108,223</b>	<b>108,259</b>	<b>107,020</b>	<b>106,120</b>
<b>Unaccounted</b>	<b>2,405</b>	<b>2,786</b>	<b>2,940</b>	<b>3,082</b>	<b>2,120</b>	<b>2,345</b>
<b>United States</b>	<b>1,958</b>	<b>1,760</b>	<b>1,946</b>	<b>2,309</b>	<b>2,800</b>	<b>3,100</b>
<b>World Total</b>	<b>110,136</b>	<b>104,522</b>	<b>113,109</b>	<b>113,650</b>	<b>111,940</b>	<b>111,565</b>

**World Wheat Production, Consumption, and Stocks**  
**Local Marketing Years, Thousand Metric Tons**

	2002/03	2003/04	2004/05	2005/06	2006/07 Dec	2006/07 Jan
<b>Production</b>						
Argentina	12,300	14,500	16,000	13,800	14,200	14,200
Australia	10,132	26,132	22,600	24,500	10,500	10,500
Canada	16,198	23,552	25,860	26,775	27,300	27,300
China, Peoples Republic of	90,290	86,490	91,950	97,450	103,500	103,500
Egypt	6,300	6,443	7,177	8,184	8,200	8,200
EU-25	124,829	106,878	136,778	122,685	117,237	117,927
India	71,810	65,100	72,150	68,640	68,000	68,000
Iran	12,450	13,500	14,000	14,500	14,000	14,000
Kazakhstan, Republic of	12,600	11,000	9,950	11,000	11,500	11,500
Morocco	3,357	5,147	5,540	3,043	6,100	6,100
Pakistan	18,227	19,183	19,500	21,500	21,700	21,700
Russian Federation	50,550	34,100	45,400	47,700	43,500	44,900
Turkey	16,800	16,800	18,500	18,000	18,000	18,000
Ukraine	20,556	3,600	17,500	18,700	14,300	14,300
Uzbekistan, Republic of	5,000	5,400	5,500	6,050	5,800	5,800
Others	52,539	52,956	61,706	59,961	55,410	55,510
<b>Subtotal</b>	<b>523,938</b>	<b>490,781</b>	<b>570,111</b>	<b>562,488</b>	<b>539,247</b>	<b>541,437</b>
<b>United States</b>	<b>43,705</b>	<b>63,814</b>	<b>58,738</b>	<b>57,280</b>	<b>49,316</b>	<b>49,316</b>
<b>World Total</b>	<b>567,643</b>	<b>554,595</b>	<b>628,849</b>	<b>619,768</b>	<b>588,563</b>	<b>590,753</b>
<b>Total Consumption</b>						
Algeria	6,650	6,800	7,300	7,500	7,700	7,700
Australia	6,178	5,956	6,200	6,400	6,900	6,900
Brazil	9,890	9,800	10,200	10,800	10,400	10,400
Canada	8,181	7,637	9,300	9,133	9,200	9,200
China, Peoples Republic of	105,200	104,500	102,000	101,000	101,000	101,000
Egypt	12,800	13,300	14,200	14,800	15,600	15,600
EU-25	118,100	107,900	115,200	119,500	116,000	116,600
India	74,294	68,258	72,838	69,971	72,500	72,700
Iran	14,350	14,300	14,500	14,800	15,200	15,200
Kazakhstan, Republic of	6,800	6,800	7,400	7,400	7,600	7,600
Morocco	6,220	6,400	6,900	7,100	7,400	7,400
Pakistan	18,380	19,100	20,000	21,500	22,000	21,900
Russian Federation	39,320	35,500	37,400	38,400	36,900	37,300
Turkey	16,800	16,800	16,800	16,100	16,800	16,800
Ukraine	14,500	9,025	11,700	12,500	11,200	11,500
Others	115,388	116,600	125,047	129,809	128,447	128,097
<b>Subtotal</b>	<b>573,311</b>	<b>555,971</b>	<b>578,288</b>	<b>592,570</b>	<b>583,903</b>	<b>585,026</b>
<b>United States</b>	<b>30,448</b>	<b>32,507</b>	<b>31,823</b>	<b>31,191</b>	<b>31,298</b>	<b>31,325</b>
<b>World Total</b>	<b>603,759</b>	<b>588,478</b>	<b>610,111</b>	<b>623,761</b>	<b>615,201</b>	<b>616,351</b>
<b>Ending Stocks</b>						
Algeria	2,712	2,814	3,506	3,670	3,365	3,365
Canada	5,725	6,080	7,922	9,743	7,593	7,593
China, Peoples Republic of	60,378	43,293	38,819	34,890	35,590	35,590
Egypt	1,316	1,744	2,861	4,006	3,596	3,596
EU-25	16,643	10,602	25,206	20,968	12,954	13,595
Kazakhstan, Republic of	3,673	3,777	3,642	4,283	3,198	3,198
Syria	5,072	5,212	5,252	5,483	5,233	5,233
Others	57,669	44,285	49,510	48,836	37,279	36,804
<b>Subtotal</b>	<b>153,188</b>	<b>117,807</b>	<b>136,718</b>	<b>131,879</b>	<b>108,808</b>	<b>108,974</b>
<b>United States</b>	<b>13,374</b>	<b>14,872</b>	<b>14,699</b>	<b>15,545</b>	<b>11,927</b>	<b>12,852</b>
<b>World Total</b>	<b>166,562</b>	<b>132,679</b>	<b>151,417</b>	<b>147,424</b>	<b>120,735</b>	<b>121,826</b>



**Regional Wheat Imports, Production, Consumption, and Stocks**

Thousand Metric Tons

	2002/03	2003/04	2004/05	2005/06	Dec 2006/07	Jan 2006/07
<b>TY Imports</b>						
North America	5,501	5,630	5,910	6,136	6,650	6,950
Central America	1,381	1,500	1,510	1,514	1,575	1,575
Caribbean	1,774	1,839	2,034	1,926	1,905	1,905
South America	11,394	11,207	10,826	12,687	13,440	13,440
European Union	13,921	5,912	7,393	7,609	6,800	6,800
Other Europe	1,971	4,229	1,836	1,593	1,500	1,500
Former Soviet Union - 12	4,601	7,260	4,548	4,679	4,040	4,040
Middle East	11,507	8,813	10,202	13,099	10,925	10,425
North Africa	18,714	15,480	18,407	18,441	16,400	16,400
Sub-Saharan Africa	9,603	9,713	12,091	13,006	12,200	12,200
East Asia	12,236	15,320	18,357	12,830	12,050	12,050
South Asia	3,569	3,008	4,881	4,374	9,880	9,480
Southeast Asia	10,663	11,177	11,429	11,923	11,775	11,775
Oceania	896	648	745	751	680	680
<b>Total</b>	<b>107,731</b>	<b>101,736</b>	<b>110,169</b>	<b>110,568</b>	<b>109,820</b>	<b>109,220</b>
<b>Production</b>						
North America	63,133	90,066	87,018	87,075	79,716	79,716
Central America	1	1	1	1	1	1
Caribbean	0	0	0	0	0	0
South America	17,903	23,632	25,261	21,749	19,473	19,473
European Union	124,829	106,878	136,778	122,685	117,237	117,927
Other Europe	12,642	7,564	15,538	13,198	12,105	12,205
Former Soviet Union - 12	96,949	60,910	86,830	92,195	82,685	84,085
Middle East	37,991	39,486	41,463	42,020	41,300	41,300
North Africa	11,704	16,285	17,166	15,178	18,325	18,325
Sub-Saharan Africa	5,190	4,497	4,919	5,700	6,051	6,051
East Asia	91,468	87,750	93,193	98,724	104,795	104,795
South Asia	95,303	90,966	97,696	96,300	95,950	95,950
Southeast Asia	96	107	130	150	148	148
Oceania	10,434	26,453	22,856	24,793	10,777	10,777
<b>Total</b>	<b>567,643</b>	<b>554,595</b>	<b>628,849</b>	<b>619,768</b>	<b>588,563</b>	<b>590,753</b>
<b>Domestic Consumption</b>						
North America	44,529	46,044	47,123	46,424	46,698	46,725
Central America	1,221	1,354	1,410	1,406	1,476	1,476
Caribbean	1,774	1,839	2,034	1,926	1,905	1,905
South America	22,305	23,240	23,493	24,461	23,852	23,802
European Union	118,100	107,900	115,200	119,500	116,000	116,600
Other Europe	13,359	12,870	14,128	13,507	13,030	12,830
Former Soviet Union - 12	75,350	65,874	72,930	75,240	72,450	73,150
Middle East	46,701	46,708	48,958	49,912	50,735	50,635
North Africa	29,666	30,082	32,608	33,789	34,975	34,975
Sub-Saharan Africa	13,894	14,573	16,524	18,210	18,086	18,086
East Asia	117,757	116,539	114,061	113,570	113,165	113,165
South Asia	101,320	96,891	102,188	100,941	104,200	104,300
Southeast Asia	10,440	10,438	11,029	11,677	11,818	11,818
Oceania	7,083	6,831	7,122	7,341	7,755	7,755
<b>Total</b>	<b>603,499</b>	<b>581,183</b>	<b>608,808</b>	<b>617,904</b>	<b>616,145</b>	<b>617,222</b>
<b>Ending Stocks</b>						
North America	19,849	21,695	22,997	25,600	19,832	20,757
Central America	190	185	185	185	185	185
Caribbean	20	20	20	20	20	20
South America	3,170	2,992	2,856	3,280	2,221	2,196
European Union	16,643	10,602	25,206	20,968	12,954	13,595
Other Europe	3,335	2,110	3,949	3,267	2,257	2,107
Former Soviet Union - 12	16,480	10,986	14,247	15,571	12,686	13,086
Middle East	13,375	12,487	12,002	12,136	10,926	10,526
North Africa	5,959	7,467	10,220	9,835	9,370	9,370
Sub-Saharan Africa	1,508	1,108	1,234	1,393	1,183	1,183
East Asia	63,218	46,249	41,934	37,916	38,461	38,461
South Asia	17,915	9,200	7,250	5,833	6,413	6,113
Southeast Asia	1,572	2,030	2,052	1,989	1,614	1,614
Oceania	3,328	5,548	7,265	9,431	2,613	2,613
<b>Total</b>	<b>166,562</b>	<b>132,679</b>	<b>151,417</b>	<b>147,424</b>	<b>120,735</b>	<b>121,826</b>

					Dec	Jan
	2002/03	2003/04	2004/05	2005/06	2006/07	2006/07

NOTES: Regional definitions appear on last page of this circular. Imports are reported on an international year basis. All other data are reported using marketing years.

---

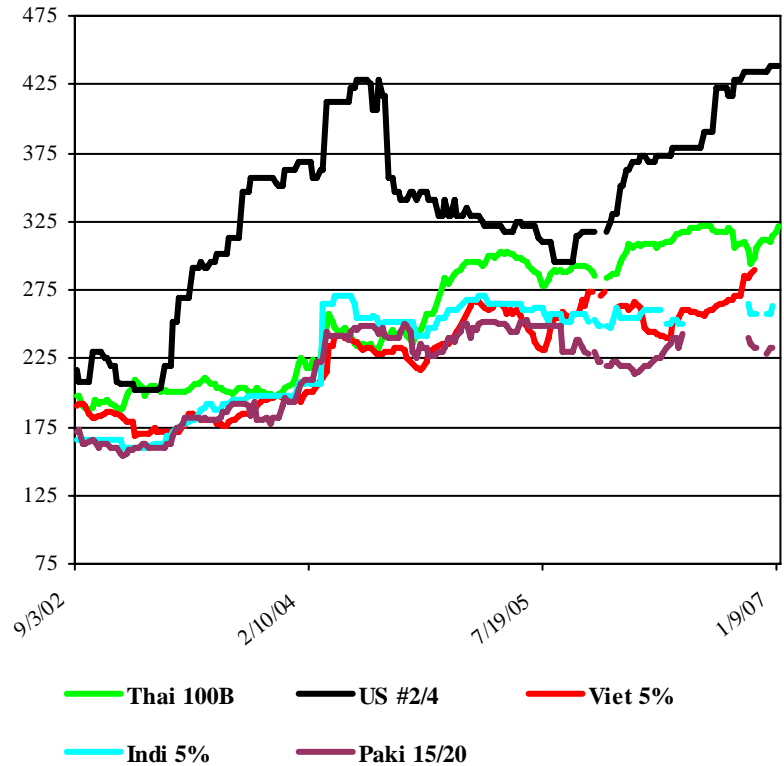
## RICE: WORLD MARKETS AND TRADE

### PRICES:

**International:** Export prices in Thailand remain high given the strength of the baht and buying interest from Middle East and Asian countries. There are no quotes out of Vietnam due to the export ban though there are reports that state owned exporting firms will be allowed to respond to tenders from Indonesia and the Philippines.

**Domestic:** U.S. #2/4 long grain milled rice quotes remain unchanged from last month at \$434 per ton, FOB despite advances in late December. The spread between comparable qualities of Thai and U.S. rice is \$113 per ton compared to \$55 per ton this time last year. U.S. medium grain prices have retreated from last month's highs of \$575 per ton price to \$565 per ton, FOB.

Nominal Rice Quotes – 2002 to Present



### TRADE CHANGES FOR 2007

#### Selected Exporters

- **Pakistan** is up 100,000 tons to 3.0 million in expectation of greater demand.
- **Thailand** is up 450,000 tons to 8.7 million due to increased regional demand and strong prices.
- **Vietnam** is up 200,000 tons to 4.9 million also due to increased regional demand and strong prices.
- **United States** is up 200,000 tons to 3.4 million on the expectation of greater demand from major trading partners.

---

### **Selected Importers**

- **Indonesia** is tripled to 1.8 million tons as the prolonged dry season has delayed plantings and harvest in major producing areas.
- **Philippines** is up 200,000 tons to 1.8 million in anticipation that the government will build stocks.

**World Rice Trade**  
**January/December Year, Thousand Metric Tons**

	2002/03	2003/04	2004/05	2005/06	2006/07 Dec	2006/07 Jan
<b>TY Exports</b>						
Argentina	170	249	345	400	400	400
Australia	141	131	52	300	100	100
Brazil	19	37	272	300	100	100
Burma, Union of	388	130	190	75	150	150
Cambodia	10	300	200	350	450	450
China, Peoples Republic of	2,583	880	656	1,100	1,000	1,000
Egypt	579	826	1,095	1,000	900	900
EU-25	220	187	201	175	150	150
Guyana	200	243	182	170	170	170
India	4,421	3,172	4,687	3,800	4,300	4,300
Japan	200	200	200	200	200	200
Pakistan	1,958	1,986	3,032	3,000	2,900	3,000
Thailand	7,552	10,137	7,274	7,300	8,250	8,700
Uruguay	675	804	762	800	625	625
Vietnam	3,795	4,295	5,174	4,800	4,700	4,900
Others	830	517	825	421	365	365
<b>Subtotal</b>	23,741	24,094	25,147	24,191	24,760	25,510
<b>United States</b>	3,834	3,090	3,862	3,500	3,200	3,400
<b>World Total</b>	27,575	27,184	29,009	27,691	27,960	28,910
<b>TY Imports</b>						
Bangladesh	1,112	801	785	700	600	600
Brazil	1,063	762	547	550	800	800
Cameroon	250	275	350	275	300	300
Canada	242	285	321	335	350	350
China, Peoples Republic of	258	1,122	609	700	800	800
Cote d'Ivoire	750	740	867	850	800	800
Cuba	371	639	736	600	700	700
EU-25	950	1,079	968	925	925	925
Ghana	357	425	450	400	450	450
Haiti	345	269	328	400	350	350
Hong Kong	307	309	315	315	315	315
Indonesia	2,750	650	500	600	600	1,800
Iran	900	950	983	1,200	900	900
Iraq	672	889	786	1,200	1,200	1,200
Japan	654	706	787	650	650	650
Malaysia	500	700	751	850	850	850
Mexico	582	521	553	600	600	600
Mozambique	232	375	350	350	350	350
Nigeria	1,448	1,369	1,777	1,600	1,700	1,700
Philippines	1,300	1,100	1,890	1,900	1,650	1,850
Russian Federation	385	350	350	375	375	375
Saudi Arabia	1,150	1,500	1,357	1,000	1,000	1,000
Senegal	750	850	1,200	750	850	850
Singapore	375	346	375	375	375	375
South Africa, Republic of	725	818	850	800	800	800
Others	6,713	7,005	7,741	6,911	7,306	6,956
<b>Subtotal</b>	25,141	24,835	26,526	25,211	25,596	26,646
<b>Unaccounted</b>	1,976	1,872	2,064	1,880	1,739	1,639
<b>United States</b>	458	477	419	600	625	625
<b>World Total</b>	27,575	27,184	29,009	27,691	27,960	28,910

Note about dates: 2006/07 is calendar year 2007, 2005/06 is calendar year 2006, and so on.

**World Rice Production, Consumption, and Stocks**  
**Local Marketing Years, Thousand Metric Tons**

	2002/03	2003/04	2004/05	2005/06	2006/07 Dec	2006/07 Jan
<b>Milled Production</b>						
Bangladesh	25,187	26,152	25,600	28,758	29,100	29,100
Brazil	7,050	8,709	8,996	7,874	7,700	7,700
Burma, Union of	10,788	10,730	9,570	10,440	10,500	10,500
Cambodia	2,400	2,960	2,330	2,835	3,025	3,025
China, Peoples Republic of	122,180	112,462	125,363	126,414	128,000	128,000
Egypt	3,705	3,900	4,128	4,130	4,140	4,140
India	71,820	88,530	83,130	91,040	91,000	91,000
Indonesia	33,411	35,024	34,830	34,959	35,088	33,700
Japan	8,089	7,091	7,944	8,257	7,940	7,940
Korea, Republic of	4,927	4,451	5,000	4,768	4,680	4,680
Nigeria	2,200	2,200	2,300	2,700	2,800	2,800
Pakistan	4,479	4,848	4,920	5,547	5,600	5,600
Philippines	8,450	9,200	9,425	9,820	10,000	10,000
Thailand	17,198	18,011	17,360	18,200	18,250	18,250
Vietnam	21,527	22,082	22,716	22,000	22,536	22,536
Others	27,558	29,019	29,400	30,657	29,883	29,901
<b>Subtotal</b>	370,969	385,369	393,012	408,399	410,242	408,872
<b>United States</b>	6,536	6,420	7,462	7,113	6,137	6,151
<b>World Total</b>	377,505	391,789	400,474	415,512	416,379	415,023
<b>Total Consumption</b>						
Bangladesh	26,100	26,700	26,900	29,000	29,750	29,750
Brazil	8,100	8,687	8,860	8,974	8,950	8,950
Burma, Union of	10,100	10,200	10,300	10,400	10,500	10,500
China, Peoples Republic of	135,700	132,100	130,300	128,000	127,800	127,800
Egypt	3,200	3,225	3,250	3,275	3,300	3,300
India	79,860	85,630	80,743	85,220	87,500	87,500
Indonesia	36,500	36,000	35,850	35,800	35,800	35,850
Iran	3,075	3,100	3,125	3,175	3,225	3,225
Japan	8,742	8,357	8,300	8,250	8,200	8,200
Korea, Republic of	5,033	4,613	4,862	4,853	4,841	4,841
Nepal	2,755	2,983	2,867	2,818	2,815	2,815
Nigeria	3,750	4,000	4,250	4,350	4,450	4,450
Philippines	9,550	10,250	10,400	11,000	11,250	11,300
Thailand	9,460	9,470	9,480	9,500	9,570	9,570
Vietnam	17,500	17,850	18,000	18,250	18,500	18,500
Others	41,941	43,572	44,245	45,008	45,925	45,570
<b>Subtotal</b>	403,836	409,261	403,787	409,406	414,287	413,832
<b>United States</b>	3,534	3,656	3,935	3,809	3,905	3,905
<b>World Total</b>	407,370	412,917	407,722	413,215	418,192	417,737
<b>Ending Stocks</b>						
China, Peoples Republic of	63,311	43,915	38,931	36,945	36,945	36,945
India	11,000	10,800	8,500	10,520	9,720	9,720
Indonesia	4,344	4,018	3,448	3,207	3,095	2,857
Japan	2,466	1,700	1,919	2,426	2,616	2,616
Philippines	3,807	4,047	4,572	5,292	5,792	5,842
Thailand	3,302	1,706	2,312	3,762	4,292	3,842
Vietnam	4,065	4,302	4,164	3,464	3,100	2,900
Others	13,398	14,145	13,089	13,457	12,109	12,058
<b>Subtotal</b>	105,693	84,633	76,935	79,073	77,669	76,780
<b>United States</b>	829	761	1,211	1,370	935	949
<b>World Total</b>	106,522	85,394	78,146	80,443	78,604	77,729

Note: All data are reported on a milled basis.

**Regional Rice Imports, Production, Consumption, and Stocks**  
**Thousand Metric Tons**

	2002/03	2003/04	2004/05	2005/06	Dec 2006/07	Jan 2006/07
<b>TY Imports</b>						
North America	1,282	1,283	1,293	1,535	1,575	1,575
Central America	416	463	531	480	500	500
Caribbean	820	1,084	1,213	1,215	1,205	1,205
South America	1,449	1,111	966	885	1,200	1,200
European Union	950	1,079	968	925	925	925
Other Europe	209	230	220	220	205	205
Former Soviet Union - 12	540	526	526	551	551	551
Middle East	3,970	4,510	4,485	4,630	4,430	4,430
North Africa	238	225	261	225	225	225
Sub-Saharan Africa	6,901	7,244	8,383	7,130	7,505	7,505
East Asia	2,166	2,948	2,556	2,415	2,655	2,305
South Asia	1,351	1,169	1,051	1,015	910	910
Southeast Asia	5,063	3,202	4,236	4,360	4,110	5,510
Oceania	244	238	256	225	225	225
<b>Total</b>	<b>25,599</b>	<b>25,312</b>	<b>26,945</b>	<b>25,811</b>	<b>26,221</b>	<b>27,271</b>
<b>Production</b>						
North America	6,669	6,620	7,657	7,294	6,318	6,332
Central America	574	553	466	507	511	511
Caribbean	865	838	666	736	730	730
South America	12,614	14,667	15,346	14,180	13,805	13,805
European Union	1,731	1,728	1,868	1,730	1,659	1,677
Other Europe	15	21	22	21	20	20
Former Soviet Union - 12	690	846	774	853	969	914
Middle East	2,151	2,483	2,611	2,737	2,803	2,848
North Africa	3,746	3,941	4,169	4,171	4,181	4,181
Sub-Saharan Africa	7,025	7,314	7,758	8,659	8,716	8,726
East Asia	137,917	126,628	140,858	142,072	143,214	143,214
South Asia	106,556	124,689	118,781	130,548	130,950	130,950
Southeast Asia	96,639	101,066	99,267	101,255	102,410	101,022
Oceania	313	395	231	749	93	93
<b>Total</b>	<b>377,505</b>	<b>391,789</b>	<b>400,474</b>	<b>415,512</b>	<b>416,379</b>	<b>415,023</b>
<b>Domestic Consumption</b>						
North America	4,476	4,666	5,006	4,919	5,055	5,055
Central America	950	976	1,025	1,056	1,063	1,063
Caribbean	1,610	1,877	1,870	1,855	1,970	1,970
South America	12,876	13,535	13,837	14,097	14,168	14,168
European Union	2,597	2,509	2,529	2,550	2,600	2,600
Other Europe	224	236	227	231	235	235
Former Soviet Union - 12	1,231	1,434	1,354	1,370	1,365	1,360
Middle East	6,694	6,697	6,625	6,997	7,107	7,107
North Africa	3,429	3,491	3,552	3,541	3,566	3,566
Sub-Saharan Africa	14,014	15,016	15,816	16,169	16,400	16,400
East Asia	153,015	148,454	147,042	144,293	144,306	143,956
South Asia	113,800	120,469	115,642	122,244	125,375	125,375
Southeast Asia	89,449	90,493	90,597	91,810	92,521	92,621
Oceania	535	540	545	550	550	550
<b>Total</b>	<b>404,900</b>	<b>410,393</b>	<b>405,667</b>	<b>411,682</b>	<b>416,281</b>	<b>416,026</b>
<b>Ending Stocks</b>						
North America	998	940	1,385	1,550	1,096	1,110
Central America	410	441	383	332	270	270
Caribbean	220	157	206	168	193	193
South America	2,107	3,010	3,668	2,911	2,235	2,253
European Union	960	974	1,138	1,068	878	920
Other Europe	45	40	50	60	65	65
Former Soviet Union - 12	308	191	117	131	267	216
Middle East	1,299	1,170	1,719	2,406	2,482	2,527
North Africa	870	719	502	357	297	297
Sub-Saharan Africa	2,708	2,297	2,108	1,992	1,708	1,703
East Asia	67,047	46,764	42,005	40,649	40,812	40,812
South Asia	11,848	12,189	8,933	11,503	10,793	10,693
Southeast Asia	17,070	15,952	15,520	16,805	17,354	16,516
Oceania	632	550	412	511	154	154
<b>Total</b>	<b>106,522</b>	<b>85,394</b>	<b>78,146</b>	<b>80,443</b>	<b>78,604</b>	<b>77,729</b>

<b>2002/03</b>	<b>2003/04</b>	<b>2004/05</b>	<b>2005/06</b>	<b>Dec 2006/07</b>	<b>Jan 2006/07</b>
----------------	----------------	----------------	----------------	------------------------	------------------------

NOTES: Regional definitions appear on last page of this circular. Imports are reported on an international year basis. All other data are reported using marketing years.



---

## COARSE GRAINS: WORLD MARKETS AND TRADE

### MONTHLY HIGHLIGHTS:

#### **Taiwan Seeks Chinese Corn:**

Recently, Taiwan's livestock industry has shown interest in purchasing up to 500,000 tons of Chinese corn due to high U.S. prices. However, trade sources expect perhaps 50,000 tons will be purchased and delivered by the end of February, when the current Taiwanese government authority expires. Strong domestic demand is keeping Chinese corn out of the export market, and there is little history to suggest large sales to Taiwan that would significantly impact U.S. dominance in that key corn market. Taiwan is expected to import 4.5 million tons of corn this year, nearly all from the United States.

#### **PRICES:**

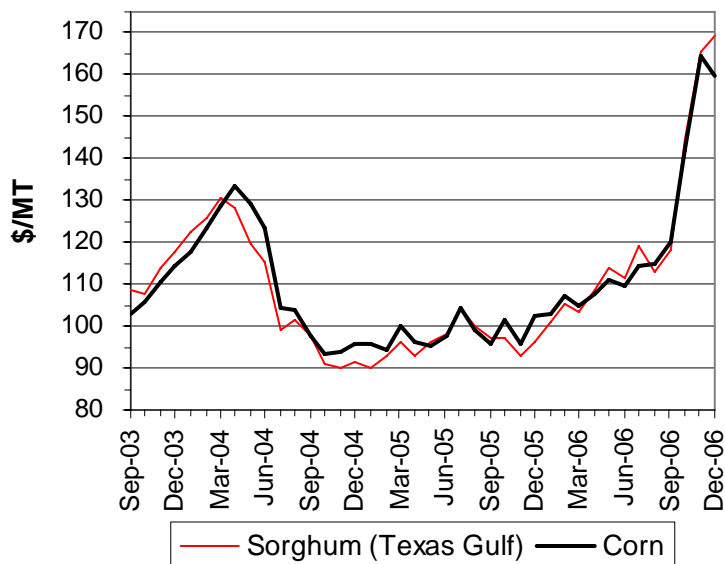
**Domestic:** December export bids for U.S. #2 yellow corn dropped for the first time in 6 months and averaged \$160. Prices remain high with strong domestic and foreign demand, and slack competition from China and Argentina.

#### **TRADE CHANGES IN 2006/2007**

##### **Selected Exporters**

- **United States corn** is up 1.0 million tons to 56.5 million. Huge outstanding sales, a rapid shipment pace to date, and continued limited competition have combined to push exports to a 12-year high despite soaring prices.
- **Brazil corn** is raised 1.0 million this month to 4.5 million because of ample exportable supplies and strong shipments in recent months.
- **Ukraine corn** is cut in half to 1.0 million tons and **Ukraine barley** is lowered 300,000 tons to 4.0 million because of export quotas that are restricting trade.
- **Argentina sorghum** is up 350,000 tons to 600,000 based on early export registrations, increased exportable supplies (largest crop in 7 years), and strong shipments to Japan.

**U.S. Gulf Export Bids**



- 
- **U.S. sorghum** is down 200,000 tons to 4.2 million based on the slow pace of sales, especially to Mexico. This is the lowest level of exports in over 20 years.

### **Selected Importers**

- **EU-25 corn** is raised 500,000 tons again this month to 4.0 million based on the pace of import licenses. This is more than double from last year and the accession of Bulgaria and Romania will likely increase corn trade to the EU-25.
- **Mexico corn** is up 500,000 tons to 6.8 million because of rapid purchases and shipments.
- **China barley** is lowered 200,000 tons to 2.0 million as a result of tightness in key suppliers such as Australia and Canada as well as a large domestic crop.

**World Coarse Grain Trade**  
**October/September Year, Thousand Metric Tons**

	2002/03	2003/04	2004/05	2005/06	2006/07 Dec	2006/07 Jan
<b>TY Exports</b>						
Argentina	13,055	10,834	14,371	11,243	12,555	12,905
Australia	2,472	6,752	4,996	5,632	2,545	2,545
Brazil	3,246	6,191	1,457	2,826	3,550	4,550
Canada	1,712	3,474	3,217	4,010	3,550	3,550
China, Peoples Republic of	15,336	7,723	7,617	3,756	4,025	4,025
EU-25	9,736	2,342	5,078	3,229	4,205	4,205
Romania	243	93	895	454	700	700
Russian Federation	3,494	1,767	1,534	1,550	2,600	2,600
Serbia and Montenegro	366	63	593	1,279	1,205	1,205
Ukraine	3,420	3,811	6,465	7,444	6,300	5,000
Others	5,167	5,615	5,179	6,295	3,535	3,665
<b>Subtotal</b>	<b>58,247</b>	<b>48,665</b>	<b>51,402</b>	<b>47,718</b>	<b>44,770</b>	<b>44,950</b>
<b>United States</b>	<b>46,394</b>	<b>54,078</b>	<b>50,692</b>	<b>61,548</b>	<b>60,435</b>	<b>61,235</b>
<b>World Total</b>	<b>104,641</b>	<b>102,743</b>	<b>102,094</b>	<b>109,266</b>	<b>105,205</b>	<b>106,185</b>
<b>TY Imports</b>						
Algeria	1,696	1,788	2,174	2,043	2,155	2,155
Brazil	935	596	745	1,099	1,000	1,000
Canada	4,098	2,081	2,339	2,029	2,370	2,370
Chile	1,110	1,148	1,189	1,662	1,515	1,715
China, Peoples Republic of	1,830	1,533	2,073	2,307	2,335	2,135
Colombia	2,428	2,232	2,516	3,380	3,325	3,525
Costa Rica	514	583	569	687	650	700
Dominican Republic	906	824	1,031	1,068	1,150	1,150
Egypt	4,867	3,747	5,405	4,417	4,820	4,820
EU-25	6,721	7,353	3,766	3,694	4,195	4,770
Indonesia	1,633	1,436	541	1,443	1,300	1,300
Iran	2,157	2,518	3,849	3,100	3,100	3,100
Israel	1,382	2,012	1,700	1,568	1,575	1,575
Japan	20,321	19,982	19,709	19,767	19,495	19,495
Jordan	820	771	938	1,200	1,000	1,000
Korea, Republic of	8,881	8,987	8,710	8,546	8,865	8,865
Malaysia	2,408	2,401	2,406	2,517	2,600	2,600
Mexico	8,766	8,873	8,975	9,941	9,100	9,400
Morocco	1,212	1,326	1,989	2,010	1,905	1,905
Peru	992	1,114	1,366	1,567	1,400	1,400
Saudi Arabia	8,927	7,130	7,644	8,472	7,500	7,500
South Africa, Republic of	750	612	277	1,034	825	825
Syria	1,198	1,541	2,281	1,991	2,300	2,300
Taiwan	4,829	5,114	4,757	4,614	4,650	4,650
Tunisia	1,046	883	1,228	1,200	1,150	1,150
Others	10,838	10,900	10,652	11,563	9,405	9,410
<b>Subtotal</b>	<b>101,265</b>	<b>97,485</b>	<b>98,829</b>	<b>102,919</b>	<b>99,685</b>	<b>100,815</b>
<b>Unaccounted</b>	<b>833</b>	<b>3,002</b>	<b>1,023</b>	<b>4,047</b>	<b>3,070</b>	<b>2,920</b>
<b>United States</b>	<b>2,543</b>	<b>2,256</b>	<b>2,242</b>	<b>2,300</b>	<b>2,450</b>	<b>2,450</b>
<b>World Total</b>	<b>104,641</b>	<b>102,743</b>	<b>102,094</b>	<b>109,266</b>	<b>105,205</b>	<b>106,185</b>

**World Coarse Grains Production, Consumption, and Stocks**  
**Local Marketing Years, Thousand Metric Tons**

	2002/03	2003/04	2004/05	2005/06	2006/07 Dec	2006/07 Jan
<b>Production</b>						
Argentina	19,445	18,596	24,902	19,223	23,398	23,573
Australia	6,652	14,861	11,573	13,759	7,755	7,755
Brazil	47,097	44,881	37,874	44,474	44,759	44,759
Canada	19,892	26,326	26,447	26,036	23,520	23,491
China, Peoples Republic of	130,725	123,953	138,252	147,696	151,440	151,440
Ethiopia	4,775	6,560	7,565	9,085	9,425	9,425
EU-25	137,892	122,183	150,209	131,750	127,224	126,386
India	25,660	37,810	33,570	34,390	33,700	33,700
Mexico	26,420	30,277	28,947	25,833	29,130	29,130
Nigeria	19,050	20,300	22,300	23,700	24,200	24,200
Romania	8,365	7,965	13,805	11,839	9,675	9,675
Russian Federation	33,400	30,500	29,600	27,600	30,700	30,200
South Africa, Republic of	10,126	10,363	12,209	7,311	10,538	10,538
Turkey	9,960	10,040	11,045	11,945	11,045	11,045
Ukraine	17,110	15,600	23,000	18,140	19,950	19,950
Others	114,770	120,573	123,337	125,965	126,808	127,003
<b>Subtotal</b>	<b>631,339</b>	<b>640,788</b>	<b>694,635</b>	<b>678,746</b>	<b>683,267</b>	<b>682,270</b>
<b>United States</b>	<b>243,719</b>	<b>275,098</b>	<b>319,417</b>	<b>298,763</b>	<b>285,722</b>	<b>280,112</b>
<b>World Total</b>	<b>875,058</b>	<b>915,886</b>	<b>1,014,052</b>	<b>977,509</b>	<b>968,989</b>	<b>962,382</b>
<b>Domestic Consumption</b>						
Argentina	7,427	7,407	9,058	9,423	10,573	10,373
Brazil	38,585	38,913	41,558	41,972	42,909	42,909
Canada	22,816	23,826	23,804	23,956	24,585	24,556
China, Peoples Republic of	136,401	138,651	141,172	147,455	151,580	151,380
Egypt	11,989	10,277	12,364	11,280	11,680	11,680
EU-25	135,386	134,584	138,817	132,445	134,475	134,475
India	26,750	36,000	33,240	34,230	33,600	33,600
Japan	20,475	20,737	19,878	19,992	19,895	19,895
Mexico	35,533	37,332	38,276	37,605	38,280	38,580
Nigeria	19,000	20,250	22,050	23,450	24,050	24,050
Romania	8,205	8,955	11,005	11,105	10,805	10,805
Russian Federation	29,850	33,250	29,400	27,700	28,350	28,050
South Africa, Republic of	9,072	9,219	10,305	9,473	9,648	9,648
Turkey	10,674	11,186	11,404	11,552	11,350	11,350
Ukraine	13,262	14,000	15,200	11,990	13,500	14,050
Others	161,102	172,488	177,558	187,703	188,953	189,253
<b>Subtotal</b>	<b>687,637</b>	<b>719,887</b>	<b>735,542</b>	<b>744,063</b>	<b>757,400</b>	<b>757,887</b>
<b>United States</b>	<b>214,667</b>	<b>225,958</b>	<b>240,216</b>	<b>244,726</b>	<b>255,149</b>	<b>253,463</b>
<b>World Total</b>	<b>902,304</b>	<b>945,845</b>	<b>975,758</b>	<b>988,789</b>	<b>1,012,549</b>	<b>1,011,350</b>
<b>Ending Stocks</b>						
Brazil	6,360	8,045	4,380	4,047	4,247	2,747
Canada	3,135	4,076	6,341	6,332	4,087	4,087
China, Peoples Republic of	66,369	45,481	37,017	35,809	33,979	33,979
EU-25	21,646	12,622	23,687	22,657	16,094	15,708
Mexico	3,973	5,767	5,395	3,314	3,264	3,264
Saudi Arabia	2,645	2,434	2,708	3,198	2,888	2,888
Ukraine	2,653	1,620	2,674	2,417	2,237	3,087
Others	32,169	31,122	37,223	34,404	30,057	29,949
<b>Subtotal</b>	<b>138,950</b>	<b>111,167</b>	<b>119,425</b>	<b>112,178</b>	<b>96,853</b>	<b>95,709</b>
<b>United States</b>	<b>30,940</b>	<b>28,764</b>	<b>58,800</b>	<b>54,767</b>	<b>27,282</b>	<b>22,268</b>
<b>World Total</b>	<b>169,890</b>	<b>139,931</b>	<b>178,225</b>	<b>166,945</b>	<b>124,135</b>	<b>117,977</b>

**Regional Coarse Grains Imports, Production, Consumption, and Stocks**  
**Thousand Metric Tons**

	2002/03	2003/04	2004/05	2005/06	Dec 2006/07	Jan 2006/07
<b>TY Imports</b>						
North America	15,407	13,210	13,556	14,270	13,920	14,220
Central America	1,980	2,178	2,405	2,734	2,500	2,550
Caribbean	1,509	1,634	1,913	1,979	2,185	2,085
South America	6,606	6,383	6,460	8,688	8,140	8,540
European Union	6,721	7,353	3,766	3,694	4,195	4,770
Other Europe	1,196	1,563	658	709	645	650
Former Soviet Union - 12	756	1,440	1,080	1,157	980	980
Middle East	16,952	16,162	17,864	17,643	16,940	16,940
North Africa	9,143	8,275	11,489	10,345	10,630	10,630
Sub-Saharan Africa	2,596	1,665	2,703	3,590	2,105	2,205
East Asia	36,109	35,786	35,611	35,584	35,595	35,395
South Asia	10	32	44	10	0	0
Southeast Asia	4,726	4,046	3,499	4,776	4,280	4,280
Oceania	97	14	23	40	20	20
<b>Total</b>	<b>103,808</b>	<b>99,741</b>	<b>101,071</b>	<b>105,219</b>	<b>102,135</b>	<b>103,265</b>
<b>Production</b>						
North America	290,031	331,701	374,811	350,632	338,372	332,733
Central America	3,060	3,206	2,882	2,889	3,146	3,146
Caribbean	540	535	505	456	456	456
South America	75,291	72,953	72,662	73,567	78,216	78,391
European Union	137,892	122,183	150,209	131,750	127,224	126,386
Other Europe	22,146	18,710	29,052	26,796	23,770	23,965
Former Soviet Union - 12	60,724	55,371	62,945	55,080	59,448	58,948
Middle East	17,508	17,717	18,496	19,186	18,286	18,286
North Africa	9,612	11,757	11,786	9,299	11,692	11,692
Sub-Saharan Africa	69,170	78,249	78,047	81,876	85,334	85,334
East Asia	133,039	126,244	140,589	150,079	153,680	153,680
South Asia	30,464	42,245	38,130	38,950	38,263	38,263
Southeast Asia	18,264	19,543	21,740	22,543	22,700	22,700
Oceania	7,317	15,472	12,198	14,406	8,402	8,402
<b>Total</b>	<b>875,058</b>	<b>915,886</b>	<b>1,014,052</b>	<b>977,509</b>	<b>968,989</b>	<b>962,382</b>
<b>Domestic Consumption</b>						
North America	273,016	287,116	302,296	306,287	318,014	316,599
Central America	4,935	5,070	5,455	5,500	5,775	5,825
Caribbean	2,056	2,112	2,350	2,433	2,618	2,518
South America	59,512	60,528	65,467	67,464	70,015	70,165
European Union	135,386	134,584	138,817	132,445	134,475	134,475
Other Europe	20,986	21,270	24,964	24,906	24,054	24,054
Former Soviet Union - 12	52,781	56,725	54,616	49,479	50,953	51,203
Middle East	30,736	34,351	33,889	36,224	36,265	36,265
North Africa	19,162	18,746	21,891	20,720	21,715	21,715
Sub-Saharan Africa	70,013	77,112	78,897	84,513	85,640	85,640
East Asia	172,991	175,783	177,183	183,348	187,465	187,265
South Asia	31,524	40,573	37,815	38,790	38,163	38,163
Southeast Asia	22,160	21,818	24,140	26,133	26,340	26,340
Oceania	5,936	7,245	7,525	7,815	7,890	7,890
<b>Total</b>	<b>901,194</b>	<b>943,033</b>	<b>975,305</b>	<b>986,057</b>	<b>1,009,382</b>	<b>1,008,117</b>
<b>Ending Stocks</b>						
North America	38,048	38,607	70,536	64,413	34,633	29,619
Central America	379	700	541	607	470	578
Caribbean	74	131	199	201	223	224
South America	8,820	10,829	8,233	7,321	7,853	6,287
European Union	21,646	12,622	23,687	22,657	16,094	15,708
Other Europe	2,981	1,698	4,115	4,215	2,320	2,246
Former Soviet Union - 12	11,967	5,964	7,258	5,556	5,345	6,001
Middle East	6,467	6,457	8,178	8,237	6,952	6,898
North Africa	1,019	2,288	3,327	2,317	2,924	2,924
Sub-Saharan Africa	3,944	5,306	5,337	4,675	5,051	5,194
East Asia	71,188	49,780	41,221	39,780	37,565	37,565
South Asia	826	1,231	1,116	961	836	836
Southeast Asia	1,228	1,988	2,075	2,642	2,519	2,547
Oceania	1,303	2,330	2,402	3,363	1,350	1,350
<b>Total</b>	<b>169,890</b>	<b>139,931</b>	<b>178,225</b>	<b>166,945</b>	<b>124,135</b>	<b>117,977</b>

<b>2002/03</b>	<b>2003/04</b>	<b>2004/05</b>	<b>2005/06</b>	<b>Dec 2006/07</b>	<b>Jan 2006/07</b>
----------------	----------------	----------------	----------------	------------------------	------------------------

NOTES: Regional definitions appear on last page of this circular. Imports are reported on an international year basis. All other data are reported using marketing years.

**World Corn Trade**  
**October/September Year, Thousand Metric Tons**

	2002/03	2003/04	2004/05	2005/06	2006/07 Dec	2006/07 Jan
<b>TY Exports</b>						
Argentina	12,349	10,439	13,752	10,707	12,000	12,000
Brazil	3,181	5,818	1,431	2,826	3,500	4,500
Bulgaria	191	81	500	400	300	450
Burma, Union of	113	144	150	250	300	300
China, Peoples Republic of	15,244	7,553	7,589	3,727	4,000	4,000
Paraguay	733	548	386	1,314	500	500
Romania	144	93	587	271	600	600
Serbia and Montenegro	353	57	589	1,274	1,200	1,200
South Africa, Republic of	1,141	797	1,517	1,406	500	500
Ukraine	811	1,238	2,334	2,464	2,000	1,000
Others	3,249	3,662	2,305	2,251	1,425	1,425
<b>Subtotal</b>	<b>37,509</b>	<b>30,430</b>	<b>31,140</b>	<b>26,890</b>	<b>26,325</b>	<b>26,475</b>
<b>United States</b>	<b>40,924</b>	<b>48,809</b>	<b>45,347</b>	<b>56,181</b>	<b>55,500</b>	<b>56,500</b>
<b>World Total</b>	<b>78,433</b>	<b>79,239</b>	<b>76,487</b>	<b>83,071</b>	<b>81,825</b>	<b>82,975</b>
<b>TY Imports</b>						
Algeria	1,643	1,765	2,046	1,989	2,100	2,100
Brazil	639	459	481	931	850	850
Canada	3,846	2,033	2,237	1,962	2,300	2,300
Chile	933	1,043	1,081	1,587	1,400	1,600
Colombia	2,112	1,999	2,256	3,151	3,100	3,300
Costa Rica	514	583	569	687	650	700
Dominican Republic	906	824	1,031	1,068	1,150	1,150
Egypt	4,848	3,743	5,398	4,397	4,800	4,800
EU-25	4,327	5,509	2,966	3,138	3,500	4,000
Guatemala	513	513	641	751	600	600
Indonesia	1,633	1,436	541	1,443	1,300	1,300
Iran	2,157	1,857	2,558	2,300	2,500	2,500
Israel	776	1,377	1,242	1,128	1,200	1,200
Japan	16,863	16,781	16,485	16,619	16,500	16,500
Korea, Republic of	8,781	8,778	8,633	8,483	8,800	8,800
Malaysia	2,408	2,401	2,406	2,517	2,600	2,600
Mexico	5,269	5,739	5,945	6,787	6,300	6,800
Morocco	1,054	1,183	1,423	1,474	1,500	1,500
Peru	917	1,041	1,301	1,467	1,300	1,300
Saudi Arabia	1,424	1,621	1,224	1,472	1,500	1,500
South Africa, Republic of	617	495	131	896	700	700
Syria	919	941	1,781	1,191	1,600	1,600
Taiwan	4,681	4,951	4,562	4,464	4,500	4,500
Tunisia	734	784	714	600	650	650
Zimbabwe	625	233	731	900	600	600
Others	8,260	8,220	7,613	8,234	6,955	6,860
<b>Subtotal</b>	<b>77,399</b>	<b>76,309</b>	<b>75,996</b>	<b>79,636</b>	<b>78,955</b>	<b>80,310</b>
<b>Unaccounted</b>	<b>660</b>	<b>2,574</b>	<b>210</b>	<b>3,221</b>	<b>2,620</b>	<b>2,415</b>
<b>United States</b>	<b>374</b>	<b>356</b>	<b>281</b>	<b>214</b>	<b>250</b>	<b>250</b>
<b>World Total</b>	<b>78,433</b>	<b>79,239</b>	<b>76,487</b>	<b>83,071</b>	<b>81,825</b>	<b>82,975</b>

**World Corn Production, Consumption, and Stocks**  
**Local Marketing Years, Thousand Metric Tons**

	2002/03	2003/04	2004/05	2005/06	2006/07 Dec	2006/07 Jan
<b>Production</b>						
Argentina	15,500	15,000	20,500	15,800	19,000	19,000
Brazil	44,500	42,000	35,000	41,700	42,000	42,000
Canada	8,999	9,600	8,840	9,461	9,300	9,300
China, Peoples Republic of	121,300	115,830	130,290	139,365	143,000	143,000
Egypt	6,000	5,740	5,840	5,860	5,870	5,870
EU-25	49,360	39,876	52,968	48,618	44,385	43,930
India	11,100	14,720	14,180	15,090	14,500	14,500
Indonesia	6,100	6,350	7,200	6,900	6,600	6,600
Mexico	19,280	21,800	22,050	19,500	22,000	22,000
Nigeria	5,200	5,500	6,500	7,000	7,500	7,500
Philippines	4,430	4,900	5,050	5,900	5,800	5,800
Romania	7,300	7,020	12,000	10,300	8,500	8,500
Serbia and Montenegro	5,585	3,800	6,569	6,600	6,600	6,600
South Africa, Republic of	9,675	9,700	11,716	6,935	10,000	10,000
Ukraine	4,180	6,850	8,800	7,150	6,500	6,500
Others	56,698	60,726	64,855	67,086	68,400	68,500
<b>Subtotal</b>	<b>375,207</b>	<b>369,412</b>	<b>412,358</b>	<b>413,265</b>	<b>419,955</b>	<b>419,600</b>
<b>United States</b>	<b>227,767</b>	<b>256,278</b>	<b>299,914</b>	<b>282,311</b>	<b>272,931</b>	<b>267,598</b>
<b>World Total</b>	<b>602,974</b>	<b>625,690</b>	<b>712,272</b>	<b>695,576</b>	<b>692,886</b>	<b>687,198</b>
<b>Total Consumption</b>						
Argentina	4,100	4,400	5,200	6,200	7,000	7,000
Brazil	35,800	36,300	38,500	39,000	40,000	40,000
Canada	12,576	11,228	10,314	10,937	11,800	11,800
China, Peoples Republic of	125,900	128,400	131,000	137,000	141,000	141,000
Egypt	10,900	9,200	11,300	10,200	10,600	10,600
EU-25	49,526	46,814	51,700	48,700	49,800	50,300
India	12,000	13,200	13,900	14,600	14,500	14,500
Indonesia	7,500	7,350	7,900	8,250	8,000	8,000
Japan	16,800	17,200	16,500	16,600	16,600	16,600
Korea, Republic of	8,782	8,722	8,666	8,579	8,900	8,900
Mexico	24,700	26,400	27,900	27,900	28,300	28,800
Nigeria	5,200	5,500	6,300	6,800	7,400	7,400
Philippines	4,650	4,950	5,150	5,800	5,900	5,900
Romania	7,200	7,900	9,500	9,700	9,500	9,500
South Africa, Republic of	8,520	8,677	9,700	8,900	9,000	9,000
Others	91,215	98,763	105,719	109,071	110,749	111,599
<b>Subtotal</b>	<b>426,596</b>	<b>436,006</b>	<b>460,325</b>	<b>469,675</b>	<b>482,173</b>	<b>484,188</b>
<b>United States</b>	<b>200,748</b>	<b>211,644</b>	<b>224,648</b>	<b>231,722</b>	<b>243,597</b>	<b>241,565</b>
<b>World Total</b>	<b>627,344</b>	<b>647,650</b>	<b>684,973</b>	<b>701,397</b>	<b>725,770</b>	<b>725,753</b>
<b>Ending Stocks</b>						
Brazil	6,258	7,878	4,192	3,892	4,142	2,642
Canada	1,111	1,143	1,802	2,001	1,601	1,601
China, Peoples Republic of	64,973	44,852	36,555	35,255	33,355	33,355
EU-25	4,826	2,938	7,008	9,940	7,946	7,420
Korea, Republic of	1,211	1,337	1,382	1,349	1,319	1,319
Mexico	3,327	4,461	4,529	2,666	2,666	2,666
South Africa, Republic of	2,443	2,956	3,190	1,475	2,225	2,225
Others	13,721	13,611	18,457	18,445	15,725	16,106
<b>Subtotal</b>	<b>97,870</b>	<b>79,176</b>	<b>77,115</b>	<b>75,023</b>	<b>68,979</b>	<b>67,334</b>
<b>United States</b>	<b>27,603</b>	<b>24,337</b>	<b>53,697</b>	<b>49,968</b>	<b>23,760</b>	<b>19,102</b>
<b>World Total</b>	<b>125,473</b>	<b>103,513</b>	<b>130,812</b>	<b>124,991</b>	<b>92,739</b>	<b>86,436</b>



## Regional Corn Imports, Production, Consumption, and Stocks

Thousand Metric Tons

	2002/03	2003/04	2004/05	2005/06	Dec 2006/07	Jan 2006/07
<b>TY Imports</b>						
North America	9,489	8,128	8,463	8,963	8,850	9,350
Central America	1,980	2,178	2,401	2,734	2,500	2,550
Caribbean	1,509	1,634	1,913	1,979	2,185	2,085
South America	5,629	5,805	5,738	8,056	7,515	7,915
European Union	4,327	5,509	2,966	3,138	3,500	4,000
Other Europe	872	1,084	459	413	310	315
Former Soviet Union - 12	179	677	559	616	500	500
Middle East	7,668	7,901	8,039	7,341	8,225	8,225
North Africa	8,413	7,673	10,013	8,935	9,450	9,450
Sub-Saharan Africa	2,293	1,333	2,147	2,901	1,745	1,745
East Asia	30,602	30,682	30,044	29,978	30,150	30,150
South Asia	7	32	40	10	0	0
Southeast Asia	4,721	4,021	3,492	4,766	4,275	4,275
Oceania	84	8	3	20	0	0
<b>Total</b>	<b>77,773</b>	<b>76,665</b>	<b>76,277</b>	<b>79,850</b>	<b>79,205</b>	<b>80,560</b>
<b>Production</b>						
North America	256,046	287,678	330,804	311,272	304,231	298,898
Central America	2,676	2,874	2,552	2,582	2,820	2,820
Caribbean	415	407	377	328	328	328
South America	66,971	64,550	63,302	65,436	69,066	69,066
European Union	49,360	39,876	52,968	48,618	44,385	43,930
Other Europe	17,767	15,130	23,699	22,183	19,610	19,810
Former Soviet Union - 12	8,548	11,530	15,385	13,125	12,925	12,825
Middle East	3,763	4,382	4,732	5,432	4,932	4,932
North Africa	6,202	5,942	6,042	6,062	6,072	6,072
Sub-Saharan Africa	35,014	37,971	41,104	38,296	43,196	43,196
East Asia	123,074	117,679	132,145	141,277	144,789	144,789
South Asia	14,707	17,875	17,300	18,210	17,620	17,620
Southeast Asia	17,972	19,246	21,380	22,183	22,340	22,340
Oceania	459	550	482	572	572	572
<b>Total</b>	<b>602,974</b>	<b>625,690</b>	<b>712,272</b>	<b>695,576</b>	<b>692,886</b>	<b>687,198</b>
<b>Domestic Consumption</b>						
North America	238,024	249,272	262,862	270,559	283,697	282,165
Central America	4,570	4,735	5,100	5,190	5,450	5,500
Caribbean	1,931	1,984	2,222	2,305	2,490	2,390
South America	51,041	52,555	56,033	58,840	61,090	61,440
European Union	49,526	46,814	51,700	48,700	49,800	50,300
Other Europe	16,906	17,270	20,174	20,339	19,660	19,660
Former Soviet Union - 12	7,921	11,009	12,706	11,755	11,380	11,930
Middle East	10,642	12,208	12,221	12,978	13,331	13,331
North Africa	14,334	13,298	15,702	14,875	15,550	15,550
Sub-Saharan Africa	35,041	37,555	40,803	41,326	42,932	42,932
East Asia	158,247	161,385	163,078	169,004	173,091	173,091
South Asia	15,573	16,493	17,034	17,720	17,620	17,620
Southeast Asia	21,896	21,515	23,797	25,788	26,000	26,000
Oceania	465	555	465	580	555	555
<b>Total</b>	<b>626,117</b>	<b>646,648</b>	<b>683,897</b>	<b>699,959</b>	<b>722,646</b>	<b>722,464</b>
<b>Ending Stocks</b>						
North America	32,041	29,941	60,028	54,635	28,027	23,369
Central America	333	658	525	590	452	560
Caribbean	74	131	199	201	223	224
South America	8,008	9,763	7,249	6,717	6,977	5,438
European Union	4,826	2,938	7,008	9,940	7,946	7,420
Other Europe	2,462	1,175	3,404	3,612	1,821	1,802
Former Soviet Union - 12	1,528	1,361	2,165	1,612	1,526	1,882
Middle East	1,976	1,985	2,400	2,047	1,927	1,873
North Africa	338	805	996	1,105	1,077	1,077
Sub-Saharan Africa	3,396	3,861	4,459	2,870	3,579	3,579
East Asia	68,847	48,338	39,901	38,425	36,273	36,273
South Asia	379	536	392	592	392	392
Southeast Asia	1,220	1,983	2,049	2,616	2,493	2,521
Oceania	45	38	37	29	26	26
<b>Total</b>	<b>125,473</b>	<b>103,513</b>	<b>130,812</b>	<b>124,991</b>	<b>92,739</b>	<b>86,436</b>

<b>2002/03</b>	<b>2003/04</b>	<b>2004/05</b>	<b>2005/06</b>	<b>Dec 2006/07</b>	<b>Jan 2006/07</b>
----------------	----------------	----------------	----------------	------------------------	------------------------

NOTES: Regional definitions appear on last page of this circular. Imports are reported on an international year basis. All other data are reported using marketing years.

**World Barley Trade**  
**October/September Year, Thousand Metric Tons**

	2002/03	2003/04	2004/05	2005/06	2006/07 Dec	2006/07 Jan
<b>TY Exports</b>						
Argentina	101	167	338	309	300	300
Australia	2,159	6,104	4,481	5,231	2,300	2,300
Bulgaria	154	20	400	200	150	150
Canada	304	1,937	1,476	1,876	1,500	1,500
EU-25	6,307	984	3,881	2,494	3,500	3,500
Kazakhstan, Republic of	542	613	100	100	300	300
Romania	99	0	308	183	100	100
Russian Federation	3,066	1,736	1,488	1,500	2,500	2,500
Serbia and Montenegro	13	6	4	5	5	5
Syria	446	320	50	50	50	50
Turkey	504	0	26	550	250	250
Ukraine	2,334	2,557	3,992	4,926	4,300	4,000
Others	183	2	0	3	0	0
<b>Subtotal</b>	16,212	14,446	16,544	17,427	15,255	14,955
<b>United States</b>	552	384	771	357	500	500
<b>World Total</b>	16,764	14,830	17,315	17,784	15,755	15,455
<b>TY Imports</b>						
Brazil	296	128	182	153	150	150
China, Peoples Republic of	1,792	1,519	2,049	2,217	2,200	2,000
Colombia	226	181	234	198	200	200
EU-25	1,443	672	554	387	350	350
Iran	0	661	1,291	800	600	600
Israel	448	508	313	300	300	300
Japan	1,399	1,359	1,522	1,417	1,400	1,400
Jordan	414	400	607	800	600	600
Kuwait	116	62	214	200	200	200
Libya	188	333	261	200	200	200
Morocco	156	143	565	500	400	400
Russian Federation	275	438	266	250	250	250
Saudi Arabia	7,502	5,508	6,420	7,000	6,000	6,000
Syria	279	600	500	800	700	700
Tunisia	312	99	514	600	500	500
Others	1,411	1,496	1,184	1,261	1,180	1,180
<b>Subtotal</b>	16,257	14,107	16,676	17,083	15,230	15,030
<b>Unaccounted</b>	225	226	482	577	225	125
<b>United States</b>	282	497	157	124	300	300
<b>World Total</b>	16,764	14,830	17,315	17,784	15,755	15,455

**World Barley Production, Consumption, and Stocks**  
**Local Marketing Years, Thousand Metric Tons**

	2002/03	2003/04	2004/05	2005/06	2006/07 Dec	2006/07 Jan
<b>Production</b>						
Algeria	416	1,220	1,314	400	1,450	1,450
Australia	3,865	10,387	7,708	9,869	4,200	4,200
Belarus	1,681	1,800	2,000	1,800	1,350	1,350
Canada	7,489	12,328	13,186	12,481	10,000	10,000
China, Peoples Republic of	3,322	2,717	3,222	3,400	3,500	3,500
Ethiopia	1,200	1,410	1,575	1,785	1,800	1,800
EU-25	56,509	54,826	61,727	52,769	54,863	54,817
India	1,500	1,410	1,310	1,080	1,400	1,400
Iran	3,085	2,900	2,900	2,900	2,900	2,900
Iraq	1,000	1,150	1,250	1,250	1,250	1,250
Kazakhstan, Republic of	2,200	2,100	1,500	1,500	1,500	1,500
Morocco	1,669	2,620	2,760	1,102	2,500	2,500
Russian Federation	18,700	18,000	17,200	15,800	18,500	18,100
Turkey	7,200	6,900	7,400	7,600	7,200	7,200
Ukraine	10,364	6,850	11,100	9,000	11,800	11,800
Others	9,707	10,229	11,951	10,643	10,545	10,615
<b>Subtotal</b>	<b>129,907</b>	<b>136,847</b>	<b>148,103</b>	<b>133,379</b>	<b>134,758</b>	<b>134,382</b>
<b>United States</b>	<b>4,940</b>	<b>6,059</b>	<b>6,091</b>	<b>4,613</b>	<b>3,920</b>	<b>3,920</b>
<b>World Total</b>	<b>134,847</b>	<b>142,906</b>	<b>154,194</b>	<b>137,992</b>	<b>138,678</b>	<b>138,302</b>
<b>Total Consumption</b>						
Australia	2,700	3,050	3,450	3,650	3,700	3,700
Belarus	1,700	1,750	1,900	1,975	1,500	1,500
Canada	7,905	9,893	10,767	10,414	10,200	10,200
China, Peoples Republic of	4,900	4,700	5,350	5,550	5,650	5,450
Ethiopia	1,200	1,410	1,575	1,785	1,800	1,800
EU-25	54,400	56,877	52,900	52,500	54,800	54,800
India	1,500	1,400	1,300	1,100	1,400	1,400
Iran	2,900	3,100	3,500	3,900	4,100	4,100
Japan	1,600	1,630	1,650	1,650	1,650	1,650
Morocco	2,000	2,300	2,700	2,450	2,600	2,600
Russian Federation	15,500	18,600	16,500	15,500	16,100	15,700
Saudi Arabia	5,810	7,010	5,410	6,510	6,310	6,310
Syria	1,100	1,250	1,350	1,450	1,450	1,450
Turkey	6,800	7,100	7,300	7,300	7,100	7,100
Ukraine	7,400	6,200	6,400	4,900	6,900	6,900
Others	14,216	14,925	16,644	16,070	16,218	16,218
<b>Subtotal</b>	<b>131,204</b>	<b>142,557</b>	<b>137,832</b>	<b>137,771</b>	<b>141,620</b>	<b>140,820</b>
<b>United States</b>	<b>5,179</b>	<b>4,990</b>	<b>5,672</b>	<b>4,571</b>	<b>4,246</b>	<b>4,464</b>
<b>World Total</b>	<b>136,383</b>	<b>147,547</b>	<b>143,504</b>	<b>142,342</b>	<b>145,866</b>	<b>145,284</b>
<b>Ending Stocks</b>						
Algeria	291	611	876	554	954	954
Australia	948	1,887	1,884	2,803	1,003	1,003
Canada	1,475	2,102	3,435	3,289	1,639	1,639
EU-25	8,488	4,287	10,680	8,082	5,669	5,449
Russian Federation	4,706	2,227	2,110	934	1,084	1,084
Saudi Arabia	2,611	2,399	2,672	3,162	2,852	2,852
Ukraine	1,424	596	991	1,212	1,432	1,832
Others	5,749	5,833	7,807	6,515	5,499	5,517
<b>Subtotal</b>	<b>25,692</b>	<b>19,942</b>	<b>30,455</b>	<b>26,551</b>	<b>20,132</b>	<b>20,330</b>
<b>United States</b>	<b>1,510</b>	<b>2,619</b>	<b>2,796</b>	<b>2,350</b>	<b>1,807</b>	<b>1,589</b>
<b>World Total</b>	<b>27,202</b>	<b>22,561</b>	<b>33,251</b>	<b>28,901</b>	<b>21,939</b>	<b>21,919</b>

**Regional Barley Imports, Production, Consumption, and Stocks**  
**Thousand Metric Tons**

	2002/03	2003/04	2004/05	2005/06	Dec 2006/07	Jan 2006/07
<b>TY Imports</b>						
North America	514	567	291	220	400	400
South America	772	440	538	534	535	535
European Union	1,443	672	554	387	350	350
Other Europe	235	384	141	171	240	240
Former Soviet Union - 12	333	706	327	470	330	330
Middle East	9,081	8,112	9,619	10,160	8,635	8,635
North Africa	721	601	1,473	1,370	1,170	1,170
Sub-Saharan Africa	97	69	102	100	100	100
East Asia	3,340	3,047	3,768	3,775	3,750	3,550
South Asia	2	0	0	0	0	0
Oceania	1	6	20	20	20	20
<b>Total</b>	<b>16,539</b>	<b>14,604</b>	<b>16,833</b>	<b>17,207</b>	<b>15,530</b>	<b>15,330</b>
<b>Production</b>						
North America	13,166	19,469	20,209	17,847	14,820	14,820
South America	1,399	2,039	2,058	1,827	2,020	2,095
European Union	56,509	54,826	61,727	52,769	54,863	54,817
Other Europe	3,208	2,395	4,119	3,381	2,937	2,932
Former Soviet Union - 12	34,072	29,631	33,160	29,385	34,495	34,095
Middle East	12,438	12,116	12,540	12,530	12,130	12,130
North Africa	2,430	4,795	4,719	2,212	4,595	4,595
Sub-Saharan Africa	1,485	1,764	1,871	2,132	2,175	2,175
East Asia	3,839	3,136	3,678	3,845	3,925	3,925
South Asia	1,995	1,970	2,025	1,795	2,118	2,118
Oceania	4,306	10,765	8,088	10,269	4,600	4,600
<b>Total</b>	<b>134,847</b>	<b>142,906</b>	<b>154,194</b>	<b>137,992</b>	<b>138,678</b>	<b>138,302</b>
<b>Domestic Consumption</b>						
North America	13,884	15,833	17,389	15,935	15,396	15,614
South America	1,950	2,189	2,330	2,220	2,225	2,225
European Union	54,400	56,877	52,900	52,500	54,800	54,800
Other Europe	2,810	2,700	3,495	3,205	3,075	3,075
Former Soviet Union - 12	27,616	29,506	27,550	25,094	27,250	26,850
Middle East	18,627	20,750	20,232	21,875	21,630	21,630
North Africa	3,839	4,427	5,164	4,780	5,130	5,130
Sub-Saharan Africa	1,612	1,774	1,986	2,200	2,265	2,265
East Asia	6,949	6,719	7,457	7,601	7,710	7,510
South Asia	1,998	1,960	2,015	1,815	2,118	2,118
Oceania	3,125	3,450	3,850	4,050	4,125	4,125
<b>Total</b>	<b>136,810</b>	<b>146,185</b>	<b>144,368</b>	<b>141,275</b>	<b>145,724</b>	<b>145,342</b>
<b>Ending Stocks</b>						
North America	3,027	4,921	6,470	5,731	3,538	3,320
South America	267	404	331	186	218	291
European Union	8,488	4,287	10,680	8,082	5,669	5,449
Other Europe	455	470	660	556	453	398
Former Soviet Union - 12	7,445	3,727	4,165	3,141	3,216	3,616
Middle East	4,448	4,429	5,742	6,154	4,989	4,989
North Africa	640	1,442	2,291	1,172	1,807	1,807
Sub-Saharan Africa	3	58	93	125	135	135
East Asia	1,388	850	839	855	820	820
South Asia	24	34	44	24	24	24
Oceania	1,017	1,939	1,936	2,875	1,070	1,070
<b>Total</b>	<b>27,202</b>	<b>22,561</b>	<b>33,251</b>	<b>28,901</b>	<b>21,939</b>	<b>21,919</b>

NOTES: Regional definitions appear on last page of this circular. Imports are reported on an international year basis. All other data are reported using marketing years.

**World Sorghum Trade**  
**October/September Year, Thousand Metric Tons**

	2002/03	2003/04	2004/05	2005/06	2006/07 Dec	2006/07 Jan
<b>TY Exports</b>						
Argentina	604	228	279	226	250	600
Australia	75	425	370	190	100	100
Brazil	64	371	24	0	50	50
China, Peoples Republic of	88	168	28	26	25	25
India	6	42	24	25	25	25
Nigeria	50	50	50	50	50	50
South Africa, Republic of	49	41	36	23	25	25
Others	65	36	14	28	55	35
<b>Subtotal</b>	1,001	1,361	825	568	580	910
<b>United States</b>	4,877	4,845	4,541	4,970	4,400	4,200
<b>World Total</b>	5,878	6,206	5,366	5,538	4,980	5,110
<b>TY Imports</b>						
Chile	58	62	71	42	65	65
Eritrea	50	55	81	25	25	25
EU-25	439	1,139	226	159	325	400
Israel	69	104	34	38	50	50
Japan	1,562	1,434	1,374	1,393	1,350	1,350
Mexico	3,384	3,002	2,931	3,029	2,700	2,500
Niger	25	50	50	50	50	50
Somalia	1	0	18	75	25	25
Sudan	15	15	160	211	100	200
Taiwan	64	61	61	50	50	50
Others	210	235	227	308	70	70
<b>Subtotal</b>	5,877	6,157	5,233	5,380	4,810	4,785
<b>Unaccounted</b>	0	49	132	158	170	325
<b>United States</b>	1	0	1	0	0	0
<b>World Total</b>	5,878	6,206	5,366	5,538	4,980	5,110

**World Sorghum Production, Consumption, and Stocks**  
**Local Marketing Years, Thousand Metric Tons**

	2002/03	2003/04	2004/05	2005/06	2006/07 Dec	2006/07 Jan
<b>Production</b>						
Argentina	2,800	2,200	2,900	2,200	3,000	3,100
Australia	1,465	2,009	2,177	2,019	2,100	2,100
Brazil	1,900	2,103	2,051	1,850	1,900	1,900
Burkina	1,260	1,520	1,400	1,837	1,600	1,600
China, Peoples Republic of	3,327	2,865	2,328	2,546	2,580	2,580
Egypt	900	900	900	900	900	900
Ethiopia	1,100	1,700	2,150	2,800	2,900	2,900
EU-25	701	380	492	477	480	563
India	7,060	7,330	7,240	7,790	7,800	7,800
Mexico	6,338	7,300	5,890	5,500	6,150	6,150
Niger	700	720	500	750	675	675
Nigeria	7,850	9,000	10,000	10,500	10,500	10,500
Sudan	2,930	5,190	2,700	4,380	3,700	3,700
Tanzania, United Republic	835	500	820	890	700	700
Uganda	425	420	400	450	490	490
Others	4,064	4,386	4,314	4,273	4,431	4,431
<b>Subtotal</b>	<b>43,655</b>	<b>48,523</b>	<b>46,262</b>	<b>49,162</b>	<b>49,906</b>	<b>50,089</b>
<b>United States</b>	<b>9,163</b>	<b>10,446</b>	<b>11,523</b>	<b>9,981</b>	<b>7,327</b>	<b>7,050</b>
<b>World Total</b>	<b>52,818</b>	<b>58,969</b>	<b>57,785</b>	<b>59,143</b>	<b>57,233</b>	<b>57,139</b>
<b>Total Consumption</b>						
Argentina	2,250	2,000	2,600	2,200	2,500	2,300
Australia	1,405	1,405	1,905	1,855	2,005	2,005
Brazil	1,850	1,650	2,100	1,900	1,900	1,900
Burkina	1,260	1,520	1,400	1,837	1,600	1,600
China, Peoples Republic of	2,825	3,000	2,400	2,500	2,550	2,550
Egypt	900	900	900	900	900	900
Ethiopia	1,105	1,700	2,150	2,200	3,000	3,000
EU-25	677	1,966	700	550	875	1,025
India	7,150	7,350	7,200	7,700	7,700	7,700
Japan	1,575	1,500	1,400	1,400	1,400	1,400
Mexico	9,900	9,800	9,300	8,600	8,900	8,700
Niger	725	750	550	750	700	700
Nigeria	7,800	8,950	9,950	10,450	10,450	10,450
Sudan	3,500	4,500	3,500	4,250	4,000	4,000
Tanzania, United Republic	860	500	820	890	700	700
Others	4,817	5,062	5,100	5,194	5,170	5,170
<b>Subtotal</b>	<b>48,797</b>	<b>52,573</b>	<b>52,072</b>	<b>53,391</b>	<b>54,236</b>	<b>54,087</b>
<b>United States</b>	<b>4,939</b>	<b>5,638</b>	<b>6,255</b>	<b>4,814</b>	<b>3,810</b>	<b>3,938</b>
<b>World Total</b>	<b>53,736</b>	<b>58,211</b>	<b>58,327</b>	<b>58,205</b>	<b>58,046</b>	<b>58,025</b>
<b>Ending Stocks</b>						
Argentina	370	379	328	128	428	328
China, Peoples Republic of	547	247	156	186	206	206
Ethiopia	0	0	0	600	500	500
India	123	61	80	145	220	220
Mexico	601	1,103	624	553	503	503
Nigeria	200	200	200	200	200	200
Sudan	263	958	313	652	404	547
Others	682	837	948	901	763	800
<b>Subtotal</b>	<b>2,786</b>	<b>3,785</b>	<b>2,649</b>	<b>3,365</b>	<b>3,224</b>	<b>3,304</b>
<b>United States</b>	<b>1,093</b>	<b>852</b>	<b>1,446</b>	<b>1,668</b>	<b>981</b>	<b>843</b>
<b>World Total</b>	<b>3,879</b>	<b>4,637</b>	<b>4,095</b>	<b>5,033</b>	<b>4,205</b>	<b>4,147</b>

## Regional Sorghum Imports, Production, Consumption, and Stocks

Thousand Metric Tons

	2002/03	2003/04	2004/05	2005/06	Dec 2006/07	Jan 2006/07
<b>TY Imports</b>						
North America	3,385	3,002	2,932	3,029	2,700	2,500
Central America	0	0	4	0	0	0
Caribbean	0	0	0	0	0	0
South America	123	104	158	67	65	65
European Union	439	1,139	226	159	325	400
Other Europe	34	24	7	10	10	10
Middle East	71	105	34	38	50	50
North Africa	1	0	0	35	0	0
Sub-Saharan Africa	187	232	412	564	235	335
East Asia	1,632	1,526	1,450	1,468	1,420	1,420
South Asia	1	0	4	0	0	0
Southeast Asia	5	25	7	10	5	5
Oceania	0	0	0	0	0	0
<b>Total</b>	<b>5,878</b>	<b>6,157</b>	<b>5,234</b>	<b>5,380</b>	<b>4,810</b>	<b>4,785</b>
<b>Production</b>						
North America	15,501	17,746	17,413	15,481	13,477	13,200
Central America	384	332	330	307	326	326
Caribbean	125	128	128	128	128	128
South America	5,473	5,075	5,777	4,890	5,751	5,851
European Union	701	380	492	477	480	563
Other Europe	5	5	5	5	5	5
Middle East	553	485	485	485	485	485
North Africa	915	915	915	915	915	915
Sub-Saharan Africa	16,957	21,315	20,045	23,650	22,736	22,736
East Asia	3,344	2,882	2,348	2,566	2,600	2,600
South Asia	7,263	7,560	7,470	8,020	8,030	8,030
Southeast Asia	132	137	200	200	200	200
Oceania	1,465	2,009	2,177	2,019	2,100	2,100
<b>Total</b>	<b>52,818</b>	<b>58,969</b>	<b>57,785</b>	<b>59,143</b>	<b>57,233</b>	<b>57,139</b>
<b>Domestic Consumption</b>						
North America	14,839	15,438	15,555	13,414	12,710	12,638
Central America	365	335	355	310	325	325
Caribbean	125	128	128	128	128	128
South America	4,988	4,509	5,594	4,981	5,326	5,126
European Union	677	1,966	700	550	875	1,025
Other Europe	39	29	12	15	15	15
Middle East	610	590	527	523	535	535
North Africa	916	915	915	950	915	915
Sub-Saharan Africa	17,632	20,550	21,039	23,164	23,191	23,191
East Asia	4,484	4,603	3,886	3,985	4,025	4,025
South Asia	7,354	7,580	7,431	7,930	7,930	7,930
Southeast Asia	104	143	183	185	180	180
Oceania	1,405	1,405	1,905	1,855	2,005	2,005
<b>Total</b>	<b>53,538</b>	<b>58,191</b>	<b>58,230</b>	<b>57,990</b>	<b>58,160</b>	<b>58,038</b>
<b>Ending Stocks</b>						
North America	1,694	1,955	2,070	2,221	1,484	1,346
Central America	46	42	16	17	18	18
Caribbean	0	0	0	0	0	0
South America	447	558	535	304	544	444
European Union	68	32	43	63	34	71
Other Europe	0	0	0	0	0	0
Middle East	43	43	36	36	36	36
North Africa	40	40	39	39	39	39
Sub-Saharan Africa	530	1,375	773	1,668	1,325	1,468
East Asia	826	463	347	370	340	340
South Asia	123	61	80	145	220	220
Southeast Asia	8	5	26	26	26	26
Oceania	54	63	130	144	139	139
<b>Total</b>	<b>3,879</b>	<b>4,637</b>	<b>4,095</b>	<b>5,033</b>	<b>4,205</b>	<b>4,147</b>



					Dec	Jan
	2002/03	2003/04	2004/05	2005/06	2006/07	2006/07

NOTES: Regional definitions appear on last page of this circular. Imports are reported on an international year basis. All other data are reported using marketing years.

**World Oats Trade**  
**October/September Year, Thousand Metric Tons**

	2002/03	2003/04	2004/05	2005/06	2006/07 Dec	2006/07 Jan
<b>TY Exports</b>						
Argentina	1	0	2	1	5	5
Australia	145	210	137	191	125	125
Canada	1,058	984	1,374	1,754	1,700	1,700
Chile	12	44	29	27	25	25
EU-25	794	443	354	229	250	250
Kazakhstan, Republic of	1	5	5	5	5	5
Others	9	12	21	5	0	0
<b>Subtotal</b>	<b>2,020</b>	<b>1,698</b>	<b>1,922</b>	<b>2,212</b>	<b>2,110</b>	<b>2,110</b>
<b>United States</b>	<b>39</b>	<b>38</b>	<b>31</b>	<b>39</b>	<b>30</b>	<b>30</b>
<b>World Total</b>	<b>2,059</b>	<b>1,736</b>	<b>1,953</b>	<b>2,251</b>	<b>2,140</b>	<b>2,140</b>
<b>TY Imports</b>						
Algeria	7	1	2	4	5	5
Bosnia and Herzegovina	5	5	6	5	5	5
Canada	49	19	16	21	20	20
China, Peoples Republic of	7	9	13	18	20	20
Colombia	28	23	26	26	25	25
EU-25	11	11	6	8	10	10
Japan	83	67	67	59	70	70
Mexico	82	91	51	75	50	50
Morocco	1	0	1	1	5	5
Norway	1	2	2	48	20	20
South Africa, Republic of	19	31	42	25	25	25
Switzerland	34	38	26	48	50	50
Others	5	27	7	5	0	0
<b>Subtotal</b>	<b>332</b>	<b>324</b>	<b>265</b>	<b>343</b>	<b>305</b>	<b>305</b>
<b>Unaccounted</b>	<b>-50</b>	<b>110</b>	<b>59</b>	<b>77</b>	<b>35</b>	<b>35</b>
<b>United States</b>	<b>1,777</b>	<b>1,302</b>	<b>1,629</b>	<b>1,831</b>	<b>1,800</b>	<b>1,800</b>
<b>World Total</b>	<b>2,059</b>	<b>1,736</b>	<b>1,953</b>	<b>2,251</b>	<b>2,140</b>	<b>2,140</b>

**World Oats Production, Consumption, and Stocks**  
**Local Marketing Years, Thousand Metric Tons**

	2002/03	2003/04	2004/05	2005/06	2006/07 Dec	2006/07 Jan
<b>Production</b>						
Argentina	500	348	508	350	400	400
Australia	957	2,018	1,321	1,416	1,000	1,000
Belarus	575	500	770	600	550	550
Brazil	390	413	433	517	475	475
Canada	2,911	3,691	3,683	3,432	3,600	3,600
Chile	420	425	425	420	380	380
China, Peoples Republic of	600	600	600	600	600	600
EU-25	9,280	8,623	8,753	7,409	7,468	7,622
Kazakhstan, Republic of	100	100	140	140	140	140
Norway	279	333	359	349	349	349
Romania	350	350	350	350	350	350
Russian Federation	5,700	5,200	4,950	4,550	5,000	4,900
Serbia and Montenegro	125	110	120	120	120	120
Turkey	290	285	290	290	290	290
Ukraine	943	925	1,000	800	900	900
Others	495	555	547	559	557	557
<b>Subtotal</b>	<b>23,915</b>	<b>24,476</b>	<b>24,249</b>	<b>21,902</b>	<b>22,179</b>	<b>22,233</b>
<b>United States</b>	<b>1,684</b>	<b>2,096</b>	<b>1,679</b>	<b>1,667</b>	<b>1,361</b>	<b>1,361</b>
<b>World Total</b>	<b>25,599</b>	<b>26,572</b>	<b>25,928</b>	<b>23,569</b>	<b>23,540</b>	<b>23,594</b>
<b>Total Consumption</b>						
Argentina	525	359	500	350	400	400
Australia	800	1,705	1,175	1,200	1,075	1,075
Belarus	600	500	700	650	550	550
Brazil	382	410	425	515	475	475
Canada	1,870	2,187	2,194	2,115	2,050	2,050
Chile	430	380	400	400	350	350
China, Peoples Republic of	600	610	610	620	620	620
EU-25	8,287	8,276	8,330	7,350	7,200	7,350
Kazakhstan, Republic of	100	95	135	135	135	135
Mexico	133	182	126	155	130	130
Norway	280	340	360	400	370	370
Romania	350	350	350	350	350	350
Russian Federation	6,300	5,600	4,900	4,600	4,900	4,900
Turkey	290	288	290	290	290	290
Ukraine	950	950	1,000	800	900	900
Others	743	747	760	773	780	780
<b>Subtotal</b>	<b>22,692</b>	<b>23,204</b>	<b>22,332</b>	<b>20,728</b>	<b>20,599</b>	<b>20,749</b>
<b>United States</b>	<b>3,480</b>	<b>3,389</b>	<b>3,297</b>	<b>3,287</b>	<b>3,189</b>	<b>3,189</b>
<b>World Total</b>	<b>26,172</b>	<b>26,593</b>	<b>25,629</b>	<b>24,015</b>	<b>23,788</b>	<b>23,938</b>
<b>Ending Stocks</b>						
Argentina	77	77	83	82	77	77
Australia	187	290	299	315	115	115
Canada	524	788	974	872	742	742
China, Peoples Republic of	107	106	109	107	107	107
EU-25	1,010	834	912	746	755	778
Norway	38	33	34	31	30	30
Russian Federation	575	184	240	190	290	190
Others	156	123	183	123	130	130
<b>Subtotal</b>	<b>2,674</b>	<b>2,435</b>	<b>2,834</b>	<b>2,466</b>	<b>2,246</b>	<b>2,169</b>
<b>United States</b>	<b>723</b>	<b>941</b>	<b>841</b>	<b>763</b>	<b>716</b>	<b>716</b>
<b>World Total</b>	<b>3,397</b>	<b>3,376</b>	<b>3,675</b>	<b>3,229</b>	<b>2,962</b>	<b>2,885</b>

**Regional Oats Imports, Production, Consumption, and Stocks**  
**Thousand Metric Tons**

	2002/03	2003/04	2004/05	2005/06	Dec 2006/07	Jan 2006/07
<b>TY Imports</b>						
North America	1,908	1,412	1,696	1,927	1,870	1,870
South America	30	34	26	31	25	25
European Union	11	11	6	8	10	10
Other Europe	41	47	34	101	75	75
Former Soviet Union - 12	2	9	7	0	0	0
Middle East	0	5	0	0	0	0
North Africa	8	1	3	5	10	10
Sub-Saharan Africa	19	31	42	25	25	25
East Asia	90	76	80	77	90	90
Oceania	0	0	0	0	0	0
<b>Total</b>	<b>2,109</b>	<b>1,626</b>	<b>1,894</b>	<b>2,174</b>	<b>2,105</b>	<b>2,105</b>
<b>Production</b>						
North America	4,660	5,882	5,437	5,179	5,041	5,041
South America	1,331	1,221	1,397	1,317	1,285	1,285
European Union	9,280	8,623	8,753	7,409	7,468	7,622
Other Europe	963	981	1,028	1,026	1,026	1,026
Former Soviet Union - 12	7,331	6,735	6,870	6,100	6,598	6,498
Middle East	290	285	290	290	290	290
North Africa	65	105	110	110	110	110
Sub-Saharan Africa	45	45	45	45	45	45
East Asia	602	602	602	602	602	602
Oceania	1,032	2,093	1,396	1,491	1,075	1,075
<b>Total</b>	<b>25,599</b>	<b>26,572</b>	<b>25,928</b>	<b>23,569</b>	<b>23,540</b>	<b>23,594</b>
<b>Domestic Consumption</b>						
North America	5,483	5,758	5,617	5,557	5,369	5,369
South America	1,390	1,207	1,382	1,326	1,280	1,280
European Union	8,287	8,276	8,330	7,350	7,200	7,350
Other Europe	1,015	1,042	1,064	1,129	1,102	1,102
Former Soviet Union - 12	7,963	7,155	6,745	6,195	6,493	6,493
Middle East	290	288	290	290	290	290
North Africa	73	106	110	115	120	120
Sub-Saharan Africa	59	79	87	70	70	70
East Asia	685	677	677	683	690	690
Oceania	875	1,780	1,250	1,275	1,150	1,150
<b>Total</b>	<b>26,120</b>	<b>26,368</b>	<b>25,552</b>	<b>23,990</b>	<b>23,764</b>	<b>23,914</b>
<b>Ending Stocks</b>						
North America	1,250	1,732	1,818	1,638	1,461	1,461
South America	98	104	118	114	114	114
European Union	1,010	834	912	746	755	778
Other Europe	63	52	50	47	46	46
Former Soviet Union - 12	665	242	351	246	346	246
Middle East	0	0	0	0	0	0
North Africa	1	1	1	1	1	1
Sub-Saharan Africa	15	12	12	12	12	12
East Asia	108	109	114	110	112	112
Oceania	187	290	299	315	115	115
<b>Total</b>	<b>3,397</b>	<b>3,376</b>	<b>3,675</b>	<b>3,229</b>	<b>2,962</b>	<b>2,885</b>

NOTES: Regional definitions appear on last page of this circular. Imports are reported on an international year basis. All other data are reported using marketing years.

**World Rye Trade**  
**October/September Year, Thousand Metric Tons**

	2002/03	2003/04	2004/05	2005/06	2006/07 Dec	2006/07 Jan
<b>TY Exports</b>						
Belarus	150	50	50	50	50	50
Canada	44	186	123	141	150	150
EU-25	624	452	676	381	300	300
Others	687	42	122	49	0	0
<b>Subtotal</b>	<b>1,505</b>	<b>730</b>	<b>971</b>	<b>621</b>	<b>500</b>	<b>500</b>
<b>United States</b>	<b>2</b>	<b>2</b>	<b>2</b>	<b>1</b>	<b>5</b>	<b>5</b>
<b>World Total</b>	<b>1,507</b>	<b>732</b>	<b>973</b>	<b>622</b>	<b>505</b>	<b>505</b>
<b>TY Imports</b>						
EU-25	501	22	14	2	10	10
Israel	89	23	111	102	25	25
Japan	414	341	261	279	175	175
Korea, Republic of	31	114	8	7	10	10
Norway	8	16	13	4	5	5
Russian Federation	0	6	177	56	100	100
Switzerland	2	7	2	9	5	5
Turkey	43	16	61	2	5	5
Ukraine	222	32	0	0	50	50
Others	90	11	12	16	0	0
<b>Subtotal</b>	<b>1,400</b>	<b>588</b>	<b>659</b>	<b>477</b>	<b>385</b>	<b>385</b>
<b>Unaccounted</b>	<b>-2</b>	<b>43</b>	<b>140</b>	<b>14</b>	<b>20</b>	<b>20</b>
<b>United States</b>	<b>109</b>	<b>101</b>	<b>174</b>	<b>131</b>	<b>100</b>	<b>100</b>
<b>World Total</b>	<b>1,507</b>	<b>732</b>	<b>973</b>	<b>622</b>	<b>505</b>	<b>505</b>

**World Rye Production, Consumption, and Stocks**  
**Local Marketing Years, Thousand Metric Tons**

	2002/03	2003/04	2004/05	2005/06	2006/07 Dec	2006/07 Jan
<b>Production</b>						
Argentina	80	37	89	55	55	55
Belarus	1,600	1,200	1,400	1,150	1,100	1,100
Canada	134	327	420	359	300	300
EU-25	9,190	6,907	9,966	7,645	6,672	6,593
Russian Federation	7,150	4,200	2,850	3,600	2,800	3,000
Turkey	255	240	240	240	240	240
Ukraine	1,511	625	1,600	1,050	600	600
Others	225	221	223	227	215	215
<b>Subtotal</b>	<b>20,145</b>	<b>13,757</b>	<b>16,788</b>	<b>14,326</b>	<b>11,982</b>	<b>12,103</b>
<b>United States</b>	<b>165</b>	<b>219</b>	<b>210</b>	<b>191</b>	<b>183</b>	<b>183</b>
<b>World Total</b>	<b>20,310</b>	<b>13,976</b>	<b>16,998</b>	<b>14,517</b>	<b>12,165</b>	<b>12,286</b>
<b>Total Consumption</b>						
Argentina	80	37	89	55	55	55
Belarus	1,300	1,200	1,325	1,100	1,100	1,100
Canada	106	138	211	187	215	215
EU-25	9,310	8,700	10,075	8,600	7,400	7,300
Japan	415	340	261	279	175	175
Kazakhstan, Republic of	59	45	50	50	50	50
Romania	50	50	50	50	50	50
Russian Federation	6,150	5,500	3,300	3,600	2,950	3,150
Turkey	269	283	299	247	245	245
Ukraine	1,300	900	1,300	1,050	850	850
Others	305	298	270	268	160	160
<b>Subtotal</b>	<b>19,404</b>	<b>17,694</b>	<b>17,297</b>	<b>15,473</b>	<b>13,241</b>	<b>13,341</b>
<b>United States</b>	<b>321</b>	<b>297</b>	<b>344</b>	<b>332</b>	<b>307</b>	<b>307</b>
<b>World Total</b>	<b>19,725</b>	<b>17,991</b>	<b>17,641</b>	<b>15,805</b>	<b>13,548</b>	<b>13,648</b>
<b>Ending Stocks</b>						
Belarus	199	139	164	164	114	114
Canada	25	43	130	170	105	105
EU-25	6,177	3,834	3,156	1,851	864	854
Japan	19	20	20	20	20	20
Russian Federation	1,805	355	77	126	76	76
Ukraine	325	140	336	267	67	67
Others	1	1	1	0	0	0
<b>Subtotal</b>	<b>8,551</b>	<b>4,532</b>	<b>3,884</b>	<b>2,598</b>	<b>1,246</b>	<b>1,236</b>
<b>United States</b>	<b>11</b>	<b>15</b>	<b>20</b>	<b>18</b>	<b>18</b>	<b>18</b>
<b>World Total</b>	<b>8,562</b>	<b>4,547</b>	<b>3,904</b>	<b>2,616</b>	<b>1,264</b>	<b>1,254</b>

**Regional Rye Imports, Production, Consumption, and Stocks**  
**Thousand Metric Tons**

	2002/03	2003/04	2004/05	2005/06	Dec 2006/07	Jan 2006/07
<b>TY Imports</b>						
North America	111	101	174	131	100	100
South America	52	0	0	0	0	0
European Union	501	22	14	2	10	10
Other Europe	14	24	17	14	10	10
Former Soviet Union - 12	242	48	187	71	150	150
Middle East	132	39	172	104	30	30
Sub-Saharan Africa	0	0	0	0	0	0
East Asia	445	455	269	286	185	185
Oceania	12	0	0	0	0	0
<b>Total</b>	<b>1,509</b>	<b>689</b>	<b>833</b>	<b>608</b>	<b>485</b>	<b>485</b>
<b>Production</b>						
North America	299	546	630	550	483	483
South America	85	42	94	64	61	61
European Union	9,190	6,907	9,966	7,645	6,672	6,593
Other Europe	147	143	145	145	136	136
Former Soviet Union - 12	10,311	6,075	5,900	5,850	4,550	4,750
Middle East	255	240	240	240	240	240
Sub-Saharan Africa	3	3	3	3	3	3
East Asia	0	0	0	0	0	0
Oceania	20	20	20	20	20	20
<b>Total</b>	<b>20,310</b>	<b>13,976</b>	<b>16,998</b>	<b>14,517</b>	<b>12,165</b>	<b>12,286</b>
<b>Domestic Consumption</b>						
North America	427	435	555	519	522	522
South America	111	42	94	64	61	61
European Union	9,310	8,700	10,075	8,600	7,400	7,300
Other Europe	160	173	163	162	146	146
Former Soviet Union - 12	8,819	7,655	5,985	5,815	4,950	5,150
Middle East	358	306	410	349	270	270
Sub-Saharan Africa	3	3	3	3	3	3
East Asia	446	454	269	286	185	185
Oceania	31	20	20	20	20	20
<b>Total</b>	<b>19,665</b>	<b>17,788</b>	<b>17,574</b>	<b>15,818</b>	<b>13,557</b>	<b>13,657</b>
<b>Ending Stocks</b>						
North America	36	58	150	188	123	123
South America	0	0	0	0	0	0
European Union	6,177	3,834	3,156	1,851	864	854
Other Europe	1	1	1	0	0	0
Former Soviet Union - 12	2,329	634	577	557	257	257
Middle East	0	0	0	0	0	0
Sub-Saharan Africa	0	0	0	0	0	0
East Asia	19	20	20	20	20	20
Oceania	0	0	0	0	0	0
<b>Total</b>	<b>8,562</b>	<b>4,547</b>	<b>3,904</b>	<b>2,616</b>	<b>1,264</b>	<b>1,254</b>

NOTES: Regional definitions appear on last page of this circular. Imports are reported on an international year basis. All other data are reported using marketing years.



# HISTORICAL DATA SERIES FOR SELECTED REGIONS AND COUNTRIES

---

## CONTENTS

European Union: Grain Supply and Demand .....	41
China: Grain Supply and Demand .....	42
Other Europe: Grain Supply and Demand .....	43
Former Soviet Union: Grain Supply and Demand.....	44
Wheat Supply and Disappearance: Selected Exporters .....	51
Corn Supply and Disappearance: Selected Exporters.....	53
Barley Supply and Disappearance: Selected Exporters .....	55
Sorghum Supply and Disappearance: Selected Exporters .....	56
U.S. Grains: Supply and Distribution .....	57
Total Wheat and Coarse Grains: Supply and Demand .....	59
World Wheat and Coarse Grains: Supply and Demand .....	60
World Corn and Barley: Supply and Demand .....	62
World Rice: Supply and Demand .....	64



**European Union: Grain Supply and Demand**  
**Wheat and Coarse Grains Millions of Metric Tons/Hectares**

	Area Harvested	Yield	Production	Imports	Exports	Feed Dom. Consumpti	Domestic Consumpti	Ending Stocks
<b>Wheat</b>								
1999/00	22.0	5.2	114.7	5.1	19.4	51.2	106.5	15.0
2000/01	23.5	5.3	124.2	4.7	16.8	54.2	111.1	16.0
2001/02	22.3	5.1	113.6	10.7	14.2	53.4	110.1	15.9
2002/03	23.1	5.4	124.8	13.9	19.9	58.4	118.1	16.6
2003/04	22.0	4.8	106.9	5.9	10.9	50.8	107.9	10.6
2004/05	23.2	5.9	136.8	7.4	14.4	56.7	115.2	25.2
2005/06	22.5	5.4	122.7	7.6	15.0	60.5	119.5	21.0
2006/07	22.1	5.3	117.9	6.8	15.5	57.6	116.6	13.6
<b>Coarse Grains</b>								
1999/00	29.1	4.6	133.5	4.8	15.2	95.0	126.7	21.1
2000/01	29.0	4.6	132.7	5.4	10.7	99.5	131.0	17.6
2001/02	29.5	4.7	140.3	5.9	8.0	101.2	134.4	21.4
2002/03	28.8	4.8	137.9	6.4	8.6	102.1	135.4	21.6
2003/04	28.6	4.3	122.2	7.8	4.4	101.1	134.6	12.6
2004/05	29.2	5.1	150.2	3.7	4.0	106.5	138.8	23.7
2005/06	28.3	4.7	131.8	3.5	3.8	100.3	132.4	22.7
2006/07	28.0	4.5	126.4	4.8	3.7	102.1	134.5	15.7
<b>Wheat and Coarse Grains</b>								
1999/00	51.1	4.9	248.3	9.9	34.5	146.2	233.2	36.1
2000/01	52.5	4.9	256.9	10.2	27.5	153.7	242.1	33.6
2001/02	51.8	4.9	253.8	16.6	22.2	154.6	244.5	37.3
2002/03	51.9	5.1	262.7	20.3	28.6	160.5	253.5	38.3
2003/04	50.7	4.5	229.1	13.7	15.3	151.9	242.5	23.2
2004/05	52.4	5.5	287.0	11.1	18.4	163.2	254.0	48.9
2005/06	50.8	5.0	254.4	11.1	18.9	160.8	251.9	43.6
2006/07	50.1	4.9	244.3	11.6	19.2	159.7	251.1	29.3

Notes: Trade year statistics are on a July/June year for wheat and an Oct/Sept year for coarse grains. Data for EU-15 countries prior to its expansion in 1999.

**China: Grain Supply and Demand**

**Wheat and Coarse Grains Millions of Metric Tons/Hectares**

	<b>Area Harvested</b>	<b>Yield</b>	<b>Production</b>	<b>Imports</b>	<b>Exports</b>	<b>Feed Dom. Consumpti</b>	<b>Domestic Consumpti</b>	<b>Ending Stocks</b>
<b>Wheat</b>								
1995/96	28.9	3.5	102.2	12.5	0.5	3.2	106.5	76.5
1996/97	29.6	3.7	110.6	2.7	1.0	3.4	107.6	81.2
1997/98	30.1	4.1	123.3	1.9	1.2	4.9	109.1	96.2
1998/99	29.8	3.7	109.7	0.8	0.5	5.0	108.3	97.9
1999/00	28.9	3.9	113.9	1.0	0.5	6.5	109.3	102.9
2000/01	26.7	3.7	99.6	0.2	0.6	10.0	110.3	91.9
2001/02	24.6	3.8	93.9	1.1	1.5	9.0	108.7	76.6
2002/03	23.9	3.8	90.3	0.4	1.7	6.5	105.2	60.4
2003/04	22.0	3.9	86.5	3.7	2.8	6.0	104.5	43.3
2004/05	21.6	4.3	92.0	6.7	1.2	4.0	102.0	38.8
2005/06	22.8	4.3	97.5	1.0	1.4	3.5	101.0	34.9
2006/07	23.4	4.4	103.5	0.7	2.5	4.0	101.0	35.6
<b>Coarse Grains</b>								
1995/96	27.3	4.6	124.5	3.0	0.2	78.4	115.4	101.1
1996/97	29.1	4.9	141.3	2.1	4.0	82.6	121.0	119.5
1997/98	28.1	4.1	114.7	1.6	6.2	87.2	121.6	108.0
1998/99	29.1	4.9	143.5	2.6	3.4	91.4	127.3	123.4
1999/00	29.6	4.6	137.2	2.3	10.0	92.7	128.8	124.2
2000/01	26.5	4.3	114.0	2.4	7.3	94.4	130.4	102.8
2001/02	27.5	4.4	122.2	2.0	8.6	96.2	132.9	85.6
2002/03	28.0	4.7	130.7	1.8	15.3	98.4	136.4	66.4
2003/04	27.1	4.6	124.0	1.5	7.7	99.1	138.7	45.5
2004/05	28.2	4.9	138.3	2.1	7.6	100.2	141.2	37.0
2005/06	29.1	5.1	147.7	2.3	3.8	103.1	147.5	35.8
2006/07	29.9	5.1	151.4	2.1	4.0	105.0	151.4	34.0
<b>Wheat and Coarse Grains</b>								
1995/96	56.2	4.0	226.7	15.5	0.7	81.6	221.9	177.6
1996/97	58.7	4.3	251.9	4.8	5.0	86.0	228.6	200.7
1997/98	58.1	4.1	238.0	3.5	7.4	92.1	230.6	204.2
1998/99	58.8	4.3	253.2	3.4	3.9	96.4	235.6	221.3
1999/00	58.4	4.3	251.1	3.4	10.5	99.2	238.1	227.1
2000/01	53.1	4.0	213.6	2.6	7.9	104.4	240.7	194.7
2001/02	52.1	4.1	216.1	3.1	10.1	105.2	241.6	162.1
2002/03	51.9	4.3	221.0	2.2	17.1	104.9	241.6	126.7
2003/04	49.1	4.3	210.4	5.3	10.5	105.1	243.2	88.8
2004/05	49.8	4.6	230.2	8.8	8.8	104.2	243.2	75.8
2005/06	51.9	4.7	245.1	3.3	5.2	106.6	248.5	70.7
2006/07	53.3	4.8	254.9	2.8	6.5	109.0	252.4	69.6

Notes: Trade year statistics are on July/June Year for wheat and an Oct/Sep year for coarse grains.

**Other Europe: Grain Supply and Demand**  
**Wheat and Coarse Grains Millions of Metric Tons/Hectares**

	Area Harvested	Yield	Production	Imports	Exports	Feed Dom. Consumpti	Domestic Consumpti	Ending Stocks
<b>Wheat</b>								
1995/96	5.1	3.3	16.6	1.2	2.8	3.3	14.2	3.7
1996/97	3.9	2.3	8.9	2.2	0.6	3.0	12.6	1.7
1997/98	5.0	3.2	16.0	1.5	1.1	3.2	14.4	3.6
1998/99	4.6	3.1	14.5	1.2	1.1	3.1	14.3	3.9
1999/00	3.9	3.1	11.9	1.8	1.6	3.2	13.3	2.6
2000/01	4.4	2.8	12.1	1.9	0.9	2.8	12.8	2.9
2001/02	5.1	2.9	14.7	2.0	2.0	3.3	13.6	4.0
2002/03	4.7	2.7	12.6	2.0	1.9	3.2	13.4	3.3
2003/04	3.5	2.2	7.6	4.2	0.1	2.5	12.9	2.1
2004/05	4.1	3.8	15.5	1.8	1.4	3.5	14.1	3.9
2005/06	4.3	3.1	13.2	1.6	2.0	3.1	13.5	3.3
2006/07	3.9	3.1	12.2	1.5	2.0	2.6	12.8	2.1
<b>Coarse Grains</b>								
1995/96	7.6	3.4	25.8	0.7	0.9	21.2	25.2	1.8
1996/97	7.7	3.0	23.4	0.9	1.0	19.5	23.5	1.5
1997/98	7.5	3.9	29.4	0.7	1.2	22.9	27.0	3.5
1998/99	7.3	3.1	22.8	0.6	1.0	19.8	23.8	2.1
1999/00	7.3	3.6	26.5	0.8	0.9	21.8	25.8	2.7
2000/01	6.6	2.3	15.2	1.4	0.3	13.5	17.5	1.4
2001/02	6.8	3.1	21.1	1.1	1.0	16.6	20.5	2.2
2002/03	6.6	3.4	22.1	1.3	1.7	17.2	21.0	3.0
2003/04	6.6	2.8	18.7	1.5	0.3	17.9	21.3	1.7
2004/05	7.0	4.2	29.1	0.6	2.3	19.8	25.0	4.1
2005/06	6.9	3.9	26.8	0.7	2.5	19.3	24.9	4.2
2006/07	6.3	3.8	24.0	0.7	2.5	18.6	24.1	2.2
<b>Wheat and Coarse Grains</b>								
1995/96	12.7	3.3	42.4	1.8	3.8	24.4	39.4	5.6
1996/97	11.6	2.8	32.3	3.0	1.6	22.5	36.1	3.2
1997/98	12.4	3.6	45.4	2.2	2.3	26.1	41.4	7.1
1998/99	12.0	3.1	37.3	1.8	2.1	23.0	38.2	6.0
1999/00	11.1	3.5	38.4	2.5	2.5	25.0	39.1	5.3
2000/01	11.0	2.5	27.3	3.3	1.3	16.3	30.3	4.3
2001/02	11.8	3.0	35.8	3.1	3.0	19.9	34.0	6.1
2002/03	11.3	3.1	34.8	3.3	3.5	20.5	34.3	6.3
2003/04	10.1	2.6	26.3	5.8	0.4	20.4	34.1	3.8
2004/05	11.1	4.0	44.6	2.5	3.7	23.3	39.1	8.1
2005/06	11.2	3.6	40.0	2.3	4.5	22.4	38.4	7.5
2006/07	10.2	3.5	36.2	2.2	4.6	21.2	36.9	4.4

Notes: Trade year statistics are on July/June Year for wheat and an Oct/Sep year for coarse grains.

**Former Soviet Union: Grain Supply and Demand (Barley)**  
Millions of Tons/Hectares

Country Mktg Year	Area Harvested	Yield	Production	MY Imports	MY Exports	Feed Consumpti	Total Consumpti	Ending Stocks
<b>Former Soviet Union - 12</b>								
<b>Kazakhstan, Republic of</b>								
2002/03	1.8	1.3	2.2	0.0	0.5	1.8	1.9	0.9
2003/04	1.8	1.2	2.1	0.0	0.7	1.9	2.0	0.4
2004/05	1.7	0.9	1.5	0.0	0.1	1.5	1.6	0.2
2005/06	1.6	0.9	1.5	0.0	0.1	1.3	1.4	0.2
2006/07	1.6	0.9	1.5	0.0	0.3	1.3	1.4	0.0
<b>Russian Federation</b>								
2002/03	10.3	1.8	18.7	0.3	3.1	10.7	15.5	4.7
2003/04	10.5	1.7	18.0	0.4	2.3	13.7	18.6	2.2
2004/05	10.0	1.7	17.2	0.3	1.1	11.7	16.5	2.1
2005/06	9.2	1.7	15.8	0.3	1.7	10.9	15.5	0.9
2006/07	10.1	1.8	18.1	0.3	2.5	11.1	15.7	1.1
<b>Ukraine</b>								
2002/03	4.2	2.5	10.4	0.0	2.9	5.5	7.4	1.4
2003/04	4.6	1.5	6.9	0.0	1.5	4.7	6.2	0.6
2004/05	4.5	2.5	11.1	0.0	4.3	4.7	6.4	1.0
2005/06	4.4	2.1	9.0	0.1	4.0	3.2	4.9	1.2
2006/07	5.2	2.3	11.8	0.0	4.3	5.2	6.9	1.8
<b>Uzbekistan, Republic of</b>								
2002/03	0.1	2.7	0.2	0.0	0.0	0.2	0.2	0.0
2003/04	0.1	1.4	0.2	0.0	0.0	0.1	0.2	0.0
2004/05	0.1	2.7	0.2	0.0	0.0	0.2	0.2	0.0
2005/06	0.1	2.7	0.2	0.0	0.0	0.2	0.2	0.0
2006/07	0.1	2.7	0.2	0.0	0.0	0.2	0.2	0.0
<b>Other Former Soviet Union - 12</b>								
2002/03	1.1	2.4	2.6	0.0	0.0	1.9	2.6	0.3
2003/04	1.2	2.0	2.5	0.2	0.0	1.8	2.6	0.5
2004/05	1.2	2.6	3.2	0.1	0.0	2.2	2.9	0.8
2005/06	1.2	2.5	2.9	0.1	0.0	2.3	3.1	0.7
2006/07	1.1	2.2	2.5	0.1	0.0	2.0	2.7	0.6
<b>Total Former Soviet Union - 12</b>								
2002/03	17.3	2.0	34.1	0.3	6.5	20.0	27.6	7.4
2003/04	18.3	1.6	29.6	0.7	4.5	22.2	29.5	3.7
2004/05	17.5	1.9	33.2	0.3	5.5	20.2	27.6	4.2
2005/06	16.3	1.8	29.4	0.5	5.8	17.8	25.1	3.1
2006/07	18.1	1.9	34.1	0.3	7.1	19.7	26.9	3.6

**Former Soviet Union: Grain Supply and Demand (Barley) (Continued)**  
**Millions of Tons/Hectares**

Country	Mktg Year	Area Harvested	Yield	Production	MY Imports	MY Exports	Feed Consumpti	Total Consumpti	Ending Stocks
---------	-----------	----------------	-------	------------	------------	------------	----------------	-----------------	---------------

**Former Soviet Union: Grain Supply and Demand (Corn)**  
Millions of Tons/Hectares

Country Mktg Year	Area Harvested	Yield	Production	MY Imports	MY Exports	Feed Consumpti	Total Consumpti	Ending Stocks
<b>Former Soviet Union - 12</b>								
<b>Kazakhstan, Republic of</b>								
2002/03	0.1	3.2	0.4	0.0	0.0	0.3	0.4	0.0
2003/04	0.1	3.0	0.3	0.0	0.0	0.2	0.3	0.0
2004/05	0.1	3.0	0.3	0.0	0.0	0.2	0.3	0.0
2005/06	0.1	3.0	0.3	0.0	0.0	0.2	0.3	0.0
2006/07	0.1	3.2	0.3	0.0	0.0	0.2	0.3	0.0
<b>Russian Federation</b>								
2002/03	0.6	2.8	1.6	0.1	0.0	1.2	1.6	0.1
2003/04	0.7	3.0	2.1	0.5	0.0	2.2	2.6	0.2
2004/05	0.9	3.9	3.5	0.2	0.0	3.0	3.6	0.2
2005/06	0.9	3.8	3.2	0.3	0.1	3.0	3.6	0.1
2006/07	1.0	3.6	3.6	0.3	0.1	3.2	3.7	0.2
<b>Ukraine</b>								
2002/03	1.2	3.5	4.2	0.0	0.8	2.8	3.5	0.8
2003/04	2.0	3.4	6.9	0.0	1.2	4.9	5.6	0.8
2004/05	2.3	3.8	8.8	0.0	2.3	5.3	6.0	1.3
2005/06	1.7	4.3	7.2	0.0	2.5	4.4	5.1	0.9
2006/07	1.7	3.8	6.5	0.0	1.0	4.5	5.3	1.2
<b>Uzbekistan, Republic of</b>								
2002/03	0.0	4.3	0.2	0.0	0.0	0.1	0.1	0.0
2003/04	0.0	4.1	0.1	0.0	0.0	0.1	0.2	0.0
2004/05	0.0	4.4	0.2	0.0	0.0	0.1	0.2	0.0
2005/06	0.0	4.6	0.2	0.0	0.0	0.2	0.2	0.0
2006/07	0.0	4.6	0.2	0.0	0.0	0.2	0.2	0.0
<b>Other Former Soviet Union - 12</b>								
2002/03	0.8	2.8	2.2	0.1	0.0	2.0	2.3	0.5
2003/04	0.7	2.9	2.1	0.1	0.1	2.1	2.4	0.3
2004/05	0.9	3.1	2.6	0.3	0.0	2.4	2.7	0.6
2005/06	0.8	3.1	2.3	0.3	0.0	2.4	2.6	0.5
2006/07	0.7	3.1	2.3	0.2	0.0	2.2	2.5	0.5
<b>Total Former Soviet Union - 12</b>								
2002/03	2.7	3.2	8.5	0.2	0.9	6.4	7.9	1.5
2003/04	3.6	3.2	11.5	0.6	1.3	9.5	11.0	1.4
2004/05	4.2	3.7	15.4	0.5	2.4	11.0	12.7	2.2
2005/06	3.4	3.9	13.1	0.6	2.5	10.1	11.8	1.6
2006/07	3.6	3.6	12.8	0.5	1.1	10.3	11.9	1.9

**Former Soviet Union: Grain Supply and Demand (Corn) (Continued)**  
**Millions of Tons/Hectares**

Country	Mktg Year	Area Harvested	Yield	Production	MY Imports	MY Exports	Feed Consumpti	Total Consumpti	Ending Stocks
---------	-----------	----------------	-------	------------	------------	------------	----------------	-----------------	---------------

**Former Soviet Union: Grain Supply and Demand (Wheat)**  
Millions of Tons/Hectares

Country Mktg Year	Area Harvested	Yield	Production	MY Imports	MY Exports	Feed Consumpti	Total Consumpti	Ending Stocks
<b>Former Soviet Union - 12</b>								
<b>Kazakhstan, Republic of</b>								
2002/03	11.5	1.1	12.6	0.0	6.2	2.7	6.8	3.7
2003/04	11.3	1.0	11.0	0.0	4.1	2.7	6.8	3.8
2004/05	11.8	0.8	10.0	0.0	2.7	2.7	7.4	3.6
2005/06	11.8	0.9	11.0	0.0	3.0	2.7	7.4	4.3
2006/07	12.2	0.9	11.5	0.0	5.0	2.7	7.6	3.2
<b>Russian Federation</b>								
2002/03	25.7	2.0	50.6	1.0	12.6	16.0	39.3	6.1
2003/04	22.2	1.5	34.1	1.0	3.1	12.5	35.5	2.6
2004/05	24.2	1.9	45.4	1.2	8.0	13.6	37.4	3.9
2005/06	25.4	1.9	47.7	1.3	10.7	14.9	38.4	3.8
2006/07	23.7	1.9	44.9	1.2	9.5	14.1	37.3	3.1
<b>Ukraine</b>								
2002/03	6.8	3.0	20.6	0.8	6.6	4.0	14.5	3.3
2003/04	2.5	1.5	3.6	3.4	0.1	0.4	9.0	1.1
2004/05	5.9	3.0	17.5	0.0	4.4	2.1	11.7	2.6
2005/06	6.6	2.8	18.7	0.1	6.5	2.9	12.5	2.4
2006/07	5.4	2.6	14.3	0.1	2.8	2.1	11.5	2.5
<b>Uzbekistan, Republic of</b>								
2002/03	1.2	4.2	5.0	0.3	0.0	0.8	4.9	0.9
2003/04	1.5	3.7	5.4	0.2	0.5	0.8	5.2	0.9
2004/05	1.4	3.9	5.5	0.2	0.1	0.8	5.4	1.1
2005/06	1.5	4.2	6.1	0.2	0.1	0.8	5.6	1.7
2006/07	1.3	4.5	5.8	0.2	0.1	0.8	6.0	1.6
<b>Other Former Soviet Union - 12</b>								
2002/03	3.2	2.6	8.2	2.5	0.3	1.3	9.8	2.5
2003/04	2.9	2.3	6.8	2.6	0.1	1.2	9.4	2.5
2004/05	3.2	2.6	8.5	3.1	0.1	1.6	11.0	3.0
2005/06	3.3	2.6	8.7	3.1	0.1	1.7	11.3	3.4
2006/07	3.0	2.5	7.6	2.5	0.1	1.3	10.8	2.7
<b>Total Former Soviet Union - 12</b>								
2002/03	48.4	2.0	96.9	4.6	25.7	24.8	75.4	16.5
2003/04	40.3	1.5	60.9	7.3	7.8	17.6	65.9	11.0
2004/05	46.5	1.9	86.8	4.5	15.2	20.8	72.9	14.2
2005/06	48.5	1.9	92.2	4.7	20.3	23.0	75.2	15.6
2006/07	45.6	1.8	84.1	4.0	17.5	21.0	73.2	13.1



**Former Soviet Union: Grain Supply and Demand (Wheat) (Continued)**  
**Millions of Tons/Hectares**

Country	Mktg Year	Area Harvested	Yield	Production	MY Imports	MY Exports	Feed Consumpti	Total Consumpti	Ending Stocks
---------	-----------	----------------	-------	------------	------------	------------	----------------	-----------------	---------------

**Former Soviet Union: Grain Supply and Demand**  
**Wheat and Coarse Grains Millions of Metric Tons/Hectares**

	<b>Area Harvested</b>	<b>Yield</b>	<b>Production</b>	<b>Imports</b>	<b>Exports</b>	<b>Feed Dom. Consumpti</b>	<b>Domestic Consumpti</b>	<b>Ending Stocks</b>
<b>Wheat</b>								
2000/01	43.1	1.5	63.1	5.2	5.0	16.2	64.0	5.1
2001/02	45.7	2.0	91.3	3.8	13.9	21.1	70.2	16.0
2002/03	48.4	2.0	96.9	4.6	25.7	24.8	75.4	16.5
2003/04	40.3	1.5	60.9	7.3	7.8	17.6	65.9	11.0
2004/05	46.5	1.9	86.8	4.5	15.2	20.8	72.9	14.2
2005/06	48.5	1.9	92.2	4.7	20.3	23.0	75.2	15.6
2006/07	45.6	1.8	84.1	4.0	17.5	21.0	73.2	13.1
<b>Coarse Grains</b>								
2000/01	31.0	1.6	49.1	1.1	2.5	28.8	45.3	6.0
2001/02	32.6	1.9	61.8	1.0	6.6	33.3	50.8	11.5
2002/03	31.4	1.9	60.7	0.7	8.1	35.0	52.8	12.0
2003/04	31.2	1.8	55.4	1.5	6.1	39.4	56.7	6.0
2004/05	31.1	2.0	62.9	1.1	8.1	38.1	54.6	7.3
2005/06	28.3	1.9	55.1	1.2	8.5	33.5	49.5	5.6
2006/07	29.9	2.0	58.9	1.0	8.3	35.5	51.2	6.0

Notes: Trade year statistics are on a July/June year for wheat and an Oct/Sept year for coarse grains.

**Wheat Supply and Disappearance: Selected Exporters**  
**Million Metric Tons/Hectares**

<b>Country Mktg Year</b>	<b>Area Harvested</b>	<b>Yield</b>	<b>Production</b>	<b>MY Imports</b>	<b>MY Exports</b>	<b>Feed Consumpti</b>	<b>Total Consumpti</b>	<b>Ending Stocks</b>
<b>Wheat Competitors</b>								
<b>Argentina</b>								
1998/99	5.4	2.5	13.3	0.0	8.6	0.0	4.9	0.7
1999/00	6.2	2.7	16.4	0.0	11.6	0.1	4.9	0.6
2000/01	6.4	2.5	16.2	0.0	11.3	0.1	5.0	0.6
2001/02	6.8	2.3	15.5	0.0	10.1	0.1	4.9	1.1
2002/03	5.9	2.1	12.3	0.0	6.8	0.1	5.2	1.5
2003/04	5.7	2.5	14.5	0.0	9.4	0.1	5.2	1.4
2004/05	6.1	2.6	16.0	0.0	11.8	0.1	5.0	0.6
2005/06	5.2	2.7	13.8	0.0	8.8	0.1	5.0	0.6
2006/07	5.2	2.7	14.2	0.0	9.5	0.1	4.9	0.4
<b>Australia</b>								
1998/99	11.5	1.9	21.5	0.1	16.5	1.8	4.5	2.8
1999/00	12.2	2.0	24.8	0.1	17.8	2.5	5.2	4.6
2000/01	12.1	1.8	22.1	0.1	15.9	2.6	5.3	5.5
2001/02	11.6	2.1	24.3	0.1	16.4	2.7	5.4	8.0
2002/03	11.1	0.9	10.1	0.3	9.1	3.5	6.2	3.1
2003/04	13.1	2.0	26.1	0.1	18.0	3.2	6.0	5.4
2004/05	13.8	1.6	22.6	0.1	14.7	3.5	6.2	7.1
2005/06	12.6	1.9	24.5	0.1	16.0	3.7	6.4	9.3
2006/07	11.3	0.9	10.5	0.1	10.5	4.2	6.9	2.4
<b>Canada</b>								
1998/99	10.7	2.3	24.1	0.2	14.7	4.3	8.1	7.4
1999/00	10.4	2.6	26.9	0.2	19.2	4.1	8.1	7.3
2000/01	11.0	2.4	26.5	0.2	17.3	3.0	7.0	9.7
2001/02	10.6	1.9	20.6	0.3	16.3	3.7	7.6	6.7
2002/03	8.8	1.8	16.2	0.4	9.4	4.1	8.2	5.7
2003/04	10.5	2.3	23.6	0.2	15.8	3.4	7.6	6.1
2004/05	9.9	2.6	25.9	0.2	15.0	5.1	9.3	7.9
2005/06	9.8	2.7	26.8	0.3	16.1	5.0	9.1	9.7
2006/07	10.6	2.6	27.3	0.3	20.5	4.8	9.2	7.6
<b>Total Wheat Competitors</b>								
1998/99	27.6	2.1	58.8	0.2	39.7	6.1	17.5	11.0
1999/00	28.7	2.4	68.1	0.3	48.6	6.6	18.2	12.5
2000/01	29.5	2.2	64.9	0.3	44.5	5.7	17.4	15.8
2001/02	29.0	2.1	60.4	0.4	42.8	6.5	17.9	15.9

**Wheat Supply and Disappearance: Selected Exporters (Continued)**  
**Million Metric Tons/Hectares**

<b>Country Mktg Year</b>	<b>Area Harvested</b>	<b>Yield</b>	<b>Production</b>	<b>MY Imports</b>	<b>MY Exports</b>	<b>Feed Consumpti</b>	<b>Total Consumpti</b>	<b>Ending Stocks</b>
2002/03	25.8	1.5	38.6	0.7	25.3	7.6	19.5	10.4
2003/04	29.2	2.2	64.2	0.3	43.2	6.7	18.8	12.8
2004/05	29.7	2.2	64.5	0.3	41.5	8.7	20.5	15.6
2005/06	27.6	2.4	65.1	0.4	40.9	8.8	20.5	19.6
2006/07	27.1	1.9	52.0	0.3	40.5	9.1	21.0	10.4
<b>India</b>								
1998/99	26.7	2.5	66.4	2.2	0.0	0.4	63.7	9.9
1999/00	27.4	2.6	70.8	1.4	0.2	0.4	68.8	13.1
2000/01	27.5	2.8	76.4	0.4	1.6	0.5	66.8	21.5
2001/02	25.7	2.7	69.7	0.0	3.1	0.5	65.1	23.0
2002/03	25.9	2.8	71.8	0.0	4.9	0.6	74.3	15.7
2003/04	24.9	2.6	65.1	0.0	5.7	0.6	68.3	6.9
2004/05	26.6	2.7	72.2	0.0	2.1	0.5	72.8	4.1
2005/06	26.5	2.6	68.6	0.0	0.8	0.3	70.0	2.0
2006/07	25.0	2.7	68.0	6.0	0.3	0.3	72.7	3.0
<b>Turkey</b>								
1998/99	8.6	2.1	18.0	1.9	2.6	1.0	16.9	2.6
1999/00	8.7	1.9	16.5	1.5	2.2	1.0	16.8	1.6
2000/01	8.7	2.1	18.0	0.5	1.6	1.0	16.7	1.7
2001/02	8.5	1.8	15.5	1.0	0.8	1.1	16.5	1.0
2002/03	8.6	2.0	16.8	1.2	0.8	1.0	16.8	1.5
2003/04	8.6	2.0	16.8	1.1	0.8	1.0	16.8	1.7
2004/05	8.6	2.2	18.5	0.4	2.0	1.0	16.8	1.8
2005/06	8.6	2.1	18.0	0.1	3.2	0.4	16.1	0.6
2006/07	8.6	2.1	18.0	0.7	2.0	0.8	16.8	0.5

Notes: Wheat trade statistics are on July/June year.

**Corn Supply and Disappearance: Selected Exporters**  
**Million Metric Tons/Hectares**

<b>Country Mktg Year</b>	<b>Area Harvested</b>	<b>Yield</b>	<b>Production</b>	<b>MY Imports</b>	<b>MY Exports</b>	<b>Feed Consumpti</b>	<b>Total Consumpti</b>	<b>Ending Stocks</b>
<b>Argentina</b>								
1998/99	2.6	5.2	13.5	0.0	7.9	4.9	6.5	0.7
1999/00	3.1	5.5	17.2	0.0	11.9	4.0	5.5	0.5
2000/01	2.8	5.5	15.4	0.0	9.7	3.9	5.6	0.6
2001/02	2.5	6.0	14.7	0.0	10.9	2.7	4.2	0.3
2002/03	2.5	6.3	15.5	0.0	11.2	2.5	4.1	0.5
2003/04	2.3	6.5	15.0	0.0	10.9	2.8	4.4	0.2
2004/05	2.8	7.4	20.5	0.0	14.6	3.5	5.2	1.0
2005/06	2.4	6.5	15.8	0.0	9.5	4.4	6.2	1.1
2006/07	2.7	7.0	19.0	0.0	12.0	5.1	7.0	1.1
<b>China, Peoples Republic of</b>								
1998/99	25.2	5.3	133.0	0.3	3.3	86.5	113.9	122.9
1999/00	25.9	4.9	128.1	0.1	9.9	89.5	117.3	123.8
2000/01	23.1	4.6	106.0	0.1	7.3	92.0	120.2	102.4
2001/02	24.3	4.7	114.1	0.0	8.6	94.0	123.1	84.8
2002/03	24.6	4.9	121.3	0.0	15.2	96.0	125.9	65.0
2003/04	24.1	4.8	115.8	0.0	7.6	97.0	128.4	44.9
2004/05	25.4	5.1	130.3	0.0	7.6	98.0	131.0	36.6
2005/06	26.4	5.3	139.4	0.1	3.7	101.0	137.0	35.3
2006/07	27.0	5.3	143.0	0.1	4.0	103.0	141.0	33.4
<b>South Africa, Republic of</b>								
1998/99	3.6	2.2	7.9	0.6	0.5	3.7	7.9	0.9
1999/00	3.8	3.0	11.5	0.0	1.4	4.1	8.9	2.0
2000/01	3.2	2.5	8.0	0.4	1.3	4.1	8.7	0.5
2001/02	3.5	2.8	10.1	0.9	1.1	3.9	8.4	1.9
2002/03	3.7	2.7	9.7	0.4	1.1	4.0	8.5	2.4
2003/04	3.3	2.9	9.7	0.2	0.7	4.1	8.7	3.0
2004/05	3.2	3.6	11.7	0.4	2.1	5.0	9.7	3.2
2005/06	2.0	3.4	6.9	1.0	0.8	4.4	8.9	1.5
2006/07	3.2	3.1	10.0	0.5	0.8	4.5	9.0	2.2
<b>Brazil</b>								
1998/99	12.1	2.7	32.4	1.2	0.0	28.2	33.2	2.1
1999/00	12.6	2.5	31.6	1.6	0.2	28.5	33.5	1.7
2000/01	13.0	3.2	41.5	0.2	6.3	29.5	34.5	2.7
2001/02	11.8	3.0	35.5	0.4	2.1	29.5	35.0	1.5
2002/03	13.0	3.4	44.5	0.7	4.6	30.0	35.8	6.3
2003/04	12.4	3.4	42.0	0.4	4.4	30.5	36.3	7.9

**Corn Supply and Disappearance: Selected Exporters (Continued)**  
**Million Metric Tons/Hectares**

<b>Country Mktg Year</b>	<b>Area Harvested</b>	<b>Yield</b>	<b>Production</b>	<b>MY Imports</b>	<b>MY Exports</b>	<b>Feed Consumpti</b>	<b>Total Consumpti</b>	<b>Ending Stocks</b>
2004/05	11.6	3.0	35.0	0.5	0.7	32.1	38.5	4.2
2005/06	12.9	3.2	41.7	1.0	4.0	32.5	39.0	3.9
2006/07	12.7	3.3	42.0	0.8	4.0	33.5	40.0	2.6
<b>Total Corn Competitors</b>								
1998/99	43.5	4.3	186.8	2.0	11.8	123.2	161.5	126.6
1999/00	45.4	4.1	188.4	1.7	23.5	126.1	165.2	128.0
2000/01	42.1	4.1	171.0	0.8	24.5	129.5	169.0	106.2
2001/02	42.1	4.1	174.3	1.3	22.6	130.1	170.7	88.6
2002/03	43.7	4.4	191.0	1.2	32.2	132.5	174.3	74.2
2003/04	42.1	4.3	182.5	0.6	23.7	134.4	177.8	55.9
2004/05	43.0	4.6	197.5	0.9	25.0	138.6	184.4	44.9
2005/06	43.7	4.7	203.8	2.1	18.0	142.3	191.1	41.7
2006/07	45.6	4.7	214.0	1.4	20.8	146.1	197.0	39.3

Notes: Corn Trade Statistics are on an Oct/Sept year.

**Barley Supply and Disappearance: Selected Exporters**  
**Million Metric Tons/Hectares**

<b>Country Mktg Year</b>	<b>Area Harvested</b>	<b>Yield</b>	<b>Production</b>	<b>MY Imports</b>	<b>MY Exports</b>	<b>Feed Consumpti</b>	<b>Total Consumpti</b>	<b>Ending Stocks</b>
<b>Australia</b>								
1998/99	3.2	1.9	6.0	0.0	4.2	1.3	2.1	0.5
1999/00	2.6	1.9	5.0	0.0	2.6	1.7	2.6	0.4
2000/01	3.5	2.0	6.7	0.0	4.0	1.3	2.2	1.0
2001/02	3.7	2.2	8.3	0.0	4.7	1.8	2.8	1.8
2002/03	3.9	1.0	3.9	0.0	2.0	1.8	2.7	0.9
2003/04	4.5	2.3	10.4	0.0	6.4	2.2	3.1	1.9
2004/05	4.6	1.7	7.7	0.0	4.3	2.5	3.5	1.9
2005/06	4.7	2.1	9.9	0.0	5.3	2.7	3.7	2.8
2006/07	4.2	1.0	4.2	0.0	2.3	2.8	3.7	1.0
<b>Canada</b>								
1998/99	4.3	3.0	12.7	0.0	1.1	10.1	11.3	2.7
1999/00	4.1	3.2	13.2	0.0	1.7	9.9	11.4	2.8
2000/01	4.6	2.9	13.2	0.0	2.0	10.1	11.6	2.5
2001/02	4.2	2.6	10.8	0.1	1.1	8.9	10.3	2.0
2002/03	3.3	2.2	7.5	0.2	0.4	6.5	7.9	1.5
2003/04	4.4	2.8	12.3	0.0	1.8	8.5	9.9	2.1
2004/05	4.1	3.3	13.2	0.1	1.2	9.3	10.8	3.4
2005/06	3.9	3.2	12.5	0.0	2.3	8.9	10.4	3.3
2006/07	3.4	2.9	10.0	0.1	1.5	8.7	10.2	1.6
<b>EU-25</b>								
1999/00	13.9	4.1	57.5	1.1	10.4	37.3	51.6	11.6
2000/01	13.6	4.3	58.8	1.1	7.7	40.4	54.9	9.0
2001/02	13.5	4.2	57.0	1.6	3.8	39.0	53.9	9.9
2002/03	13.3	4.2	56.5	1.5	5.0	38.7	54.4	8.5
2003/04	13.4	4.1	54.8	0.6	2.8	41.0	56.9	4.3
2004/05	13.1	4.7	61.7	0.5	2.9	37.5	52.9	10.7
2005/06	13.0	4.1	52.8	0.2	3.1	37.2	52.5	8.1
2006/07	13.1	4.2	54.8	0.4	3.0	39.5	54.8	5.4

Notes: Barley trade statistics are on October/September year.

**Sorghum Supply and Disappearance: Selected Exporters**  
**Million Metric Tons/Hectares**

Country Mktg Year	Area Harvested	Yield	Production	MY Imports	MY Exports	Feed Consumpti	Total Consumpti	Ending Stocks
<b>Argentina</b>								
1998/99	0.7	4.4	3.2	0.0	0.6	2.5	2.6	0.7
1999/00	0.7	4.6	3.4	0.0	0.9	2.4	2.5	0.7
2000/01	0.6	4.8	2.7	0.0	0.4	2.4	2.5	0.4
2001/02	0.5	5.1	2.8	0.0	0.4	2.2	2.3	0.5
2002/03	0.6	5.1	2.8	0.0	0.6	2.1	2.3	0.4
2003/04	0.5	4.6	2.2	0.0	0.2	1.9	2.0	0.4
2004/05	0.6	5.0	2.9	0.0	0.4	2.4	2.6	0.3
2005/06	0.5	4.7	2.2	0.0	0.2	2.0	2.2	0.1
2006/07	0.6	5.0	3.1	0.0	0.6	2.1	2.3	0.3
<b>Australia</b>								
1998/99	0.6	3.2	1.9	0.0	0.5	1.4	1.4	0.1
1999/00	0.6	3.4	2.1	0.0	0.9	1.3	1.3	0.1
2000/01	0.8	2.6	1.9	0.0	0.6	1.3	1.3	0.1
2001/02	0.8	2.5	2.0	0.0	0.4	1.7	1.7	0.1
2002/03	0.7	2.2	1.5	0.0	0.1	1.4	1.4	0.1
2003/04	0.7	2.7	2.0	0.0	0.6	1.4	1.4	0.1
2004/05	0.8	2.7	2.2	0.0	0.2	1.9	1.9	0.1
2005/06	0.9	2.3	2.0	0.0	0.2	1.9	1.9	0.1
2006/07	0.8	2.6	2.1	0.0	0.1	2.0	2.0	0.1

Notes: Sorghum trade statistics are on October/September year.



**U.S. Grains Supply and Distribution: Wheat, Corn, Sorghum, Barley, Oats, Rye, and Rice**

Thousand Metric Tons/Hectares

	Area Harvested	Yield	Rough Production	Production	Imports	TY Imports	Exports	TY Exports	Feed Dom. Consumption	Domestic Consumption	Ending Stocks
<b>Wheat</b>											
2001/02	19,616	3	nr	53,001	2,927	2,953	26,190	26,270	4,953	32,434	21,150
2002/03	18,544	2	nr	43,705	2,106	1,958	23,139	22,834	3,150	30,448	13,374
2003/04	21,474	3	nr	63,814	1,715	1,760	31,524	32,295	5,521	32,507	14,872
2004/05	20,234	3	nr	58,738	1,921	1,946	29,009	28,464	4,955	31,823	14,699
2005/06	20,283	3	nr	57,280	2,224	2,309	27,467	27,424	4,168	31,191	15,545
2006/07	18,943	3	nr	49,316	3,130	3,100	23,814	24,500	3,946	31,325	12,852
<b>Corn</b>											
2001/02	27,830	9	nr	241,377	258	254	48,383	47,271	148,958	200,941	40,551
2002/03	28,057	8	nr	227,767	367	374	40,334	40,924	141,303	200,748	27,603
2003/04	28,710	9	nr	256,278	358	356	48,258	48,809	147,197	211,644	24,337
2004/05	29,798	10	nr	299,914	275	281	46,181	45,347	156,428	224,648	53,697
2005/06	30,399	9	nr	282,311	227	214	54,545	56,181	155,990	231,722	49,968
2006/07	28,590	9	nr	267,598	254	250	57,153	56,500	151,772	241,565	19,102
<b>Sorghum</b>											
2001/02	3,472	4	nr	13,057	0	0	6,142	6,135	5,842	6,427	1,549
2002/03	2,883	3	nr	9,163	1	1	4,681	4,877	4,328	4,939	1,093
2003/04	3,156	3	nr	10,446	0	0	5,049	4,845	4,624	5,638	852
2004/05	2,637	4	nr	11,523	1	1	4,675	4,541	4,860	6,255	1,446
2005/06	2,321	4	nr	9,981	0	0	4,945	4,970	3,545	4,814	1,668
2006/07	1,998	4	nr	7,050	0	0	3,937	4,200	2,794	3,938	843
<b>Barley</b>											
2001/02	1,729	3	nr	5,407	521	538	575	517	2,272	5,661	2,006
2002/03	1,669	3	nr	4,940	402	282	659	552	1,819	5,179	1,510
2003/04	1,913	3	nr	6,059	449	497	409	384	1,617	4,990	2,619
2004/05	1,627	4	nr	6,091	264	157	506	771	2,238	5,672	2,796
2005/06	1,323	3	nr	4,613	117	124	605	357	1,131	4,571	2,350
2006/07	1,194	3	nr	3,920	327	300	544	500	1,089	4,464	1,589
<b>Oats</b>											
2001/02	773	2	nr	1,707	1,654	1,497	41	37	2,413	3,459	917
2002/03	833	2	nr	1,684	1,640	1,777	38	39	2,435	3,480	723
2003/04	898	2	nr	2,096	1,547	1,302	36	38	2,330	3,389	941
2004/05	723	2	nr	1,679	1,557	1,629	39	31	2,223	3,297	841
2005/06	738	2	nr	1,667	1,572	1,831	30	39	2,213	3,287	763
2006/07	638	2	nr	1,361	1,810	1,800	29	30	2,100	3,189	716
<b>Rye</b>											

	Area Harvested	Yield	Rough Production	Production	Imports	TY Imports	Exports	TY Exports	Feed Dom. Consumption	Domestic Consumption	Ending Stocks
2001/02	101	2	nr	175	126	164	5	4	75	312	14
2002/03	106	2	nr	165	156	109	3	2	85	321	11
2003/04	129	2	nr	219	83	101	1	2	62	297	15
2004/05	121	2	nr	210	143	174	4	2	107	344	20
2005/06	113	2	nr	191	139	131	0	1	96	332	18
2006/07	111	2	nr	183	127	100	3	5	71	307	18
<b>Rice, Milled</b>											
2001/02	1,341	7	9,764	6,714	419	420	2,954	3,295	nr	3,850	1,216
2002/03	1,298	7	9,570	6,536	471	458	3,860	3,834	nr	3,534	829
2003/04	1,213	7	9,068	6,420	478	477	3,310	3,090	nr	3,656	761
2004/05	1,346	8	10,540	7,462	419	419	3,496	3,862	nr	3,935	1,211
2005/06	1,361	7	10,125	7,113	544	600	3,689	3,500	nr	3,809	1,370
2006/07	1,142	8	8,787	6,151	572	625	3,239	3,400	nr	3,905	949

Notes: Wheat trade year statistics are on July/June years. Barley, corn, sorghum, rye and oats trade year statistics are on Oct/Sept years. Rice trade year statistics are for subsequent calendar year.

**Total Wheat and Coarse Grains: Supply and Demand**

**Millions of Metric Tons/Hectares**

	<b>Area Harvested</b>	<b>Yield</b>	<b>Production TY</b>	<b>Exports</b>	<b>Feed Dom. Consumpti</b>	<b>Domestic Consumpti</b>	<b>Ending Stocks</b>
<b>Wheat and Coarse Grains</b>							
1977/78	570.7	1.9	1,068.9	158.3	511.7	1,076.8	233.2
1978/79	569.7	2.1	1,183.1	161.8	556.8	1,138.1	278.2
1979/80	569.0	2.0	1,153.1	182.6	573.9	1,157.6	273.7
1980/81	577.6	2.0	1,159.3	200.6	562.6	1,179.2	255.2
1981/82	587.8	2.0	1,204.0	196.9	573.5	1,178.3	281.0
1982/83	576.9	2.2	1,248.0	189.6	593.4	1,197.1	332.1
1983/84	563.8	2.1	1,162.5	193.2	588.4	1,216.2	278.5
1984/85	567.0	2.3	1,315.0	203.6	609.9	1,253.6	339.9
1985/86	570.9	2.3	1,328.5	165.2	613.1	1,247.9	420.5
1986/87	565.6	2.4	1,348.0	174.7	644.2	1,299.5	468.9
1987/88	544.7	2.4	1,285.0	202.2	655.2	1,329.8	422.0
1988/89	542.2	2.2	1,218.0	203.3	618.2	1,302.6	337.4
1989/90	548.4	2.4	1,327.7	208.9	643.1	1,346.4	318.7
1990/91	548.8	2.6	1,416.7	190.1	666.9	1,369.6	365.8
1991/92	545.4	2.5	1,355.4	207.5	649.8	1,364.7	356.4
1992/93	549.3	2.6	1,431.0	205.2	662.2	1,389.5	395.0
1993/94	540.5	2.5	1,356.2	188.2	654.0	1,388.8	362.4
1994/95	537.8	2.6	1,392.4	200.1	666.5	1,396.2	358.6
1995/96	533.5	2.5	1,338.8	187.5	636.0	1,380.3	317.1
1996/97	553.6	2.7	1,491.6	198.4	669.1	1,442.6	366.1
1997/98	539.6	2.8	1,491.2	190.3	680.0	1,444.5	412.9
1998/99	533.6	2.8	1,480.9	198.7	678.5	1,448.2	445.5
1999/00	515.1	2.8	1,463.4	217.5	685.2	1,467.3	441.1
2000/01	514.3	2.8	1,443.8	208.5	692.8	1,468.3	416.6
2001/02	516.1	2.9	1,474.8	213.6	707.0	1,491.6	399.8
2002/03	507.6	2.8	1,442.7	214.8	707.8	1,506.1	336.5
2003/04	516.8	2.8	1,470.5	207.3	711.0	1,534.3	272.6
2004/05	519.3	3.2	1,642.9	215.2	747.8	1,585.9	329.6
2005/06	519.6	3.1	1,597.3	222.9	745.7	1,612.6	314.4
2006/07	514.8	3.0	1,553.1	217.8	743.7	1,627.7	239.8

Notes: Wheat and coarse grains trade data are on July June years through 1975/76. From 1976/77 to the pr on an Oct/Sept trade year. "Stocks as a Percent of Consumption" represents the ratio of marketing year end consumption.

**World Wheat and Coarse Grains: Supply and Demand**

**Millions of Metric Tons/Hectares**

	<b>Area Harvested</b>	<b>Yield</b>	<b>Production TY</b>	<b>Exports</b>	<b>Feed Dom. Consumpti</b>	<b>Domestic Consumpti</b>	<b>Ending Stocks</b>
<b>Wheat</b>							
1977/78	227.2	1.7	377.8	71.7	85.5	396.0	109.2
1978/79	228.9	1.9	438.9	71.3	89.8	413.3	134.8
1979/80	227.8	1.8	417.5	85.5	94.0	431.9	120.5
1980/81	236.9	1.8	435.9	93.2	91.2	444.1	112.7
1981/82	238.9	1.9	445.0	100.5	90.6	445.1	112.5
1982/83	238.4	2.0	472.7	97.7	92.8	455.6	129.9
1983/84	229.9	2.1	484.3	101.2	95.6	468.9	145.3
1984/85	231.7	2.2	508.9	104.7	99.9	486.2	168.0
1985/86	229.8	2.2	494.8	83.6	97.2	484.5	178.3
1986/87	227.9	2.3	524.1	89.7	113.2	511.3	191.1
1987/88	219.7	2.3	497.9	114.1	113.6	530.3	158.6
1988/89	217.4	2.3	495.0	104.3	104.0	519.6	134.0
1989/90	225.8	2.4	533.2	103.9	103.7	531.0	136.2
1990/91	231.4	2.5	588.0	101.3	130.1	553.7	170.5
1991/92	222.5	2.4	542.9	111.4	113.8	551.5	162.0
1992/93	222.8	2.5	561.6	113.2	110.9	547.6	175.7
1993/94	222.1	2.5	558.0	101.7	108.0	552.4	181.4
1994/95	214.4	2.4	523.2	101.5	99.6	542.4	162.1
1995/96	218.8	2.5	537.9	99.2	91.9	544.8	155.3
1996/97	230.2	2.5	582.6	104.0	96.7	573.4	164.5
1997/98	228.4	2.7	610.0	104.5	101.0	577.3	197.1
1998/99	225.1	2.6	590.0	102.0	103.7	579.0	208.1
1999/00	215.4	2.7	585.8	112.7	99.7	585.0	208.9
2000/01	217.6	2.7	581.5	104.1	104.0	583.9	206.5
2001/02	214.7	2.7	581.1	110.8	106.6	585.0	202.7
2002/03	214.6	2.6	567.6	110.1	112.7	603.8	166.6
2003/04	209.9	2.6	554.6	104.5	96.7	588.5	132.7
2004/05	218.9	2.9	628.8	113.1	106.6	610.1	151.4
2005/06	218.3	2.8	619.8	113.7	111.2	623.8	147.4
2006/07	211.5	2.8	590.8	111.6	105.3	616.4	121.8
<b>Coarse Grains</b>							
1977/78	343.5	2.0	691.0	86.6	426.2	680.8	124.0
1978/79	340.8	2.2	744.1	90.5	467.0	724.8	143.3
1979/80	341.1	2.2	735.5	97.1	479.9	725.6	153.2
1980/81	340.7	2.1	723.5	107.4	471.4	735.1	142.6
1981/82	348.9	2.2	759.0	96.4	482.9	733.2	168.4
1982/83	338.6	2.3	775.3	92.0	500.6	741.5	202.2
1983/84	333.9	2.0	678.2	92.0	492.7	747.3	133.1
1984/85	335.3	2.4	806.1	98.9	510.0	767.4	171.9
1985/86	341.1	2.4	833.7	81.6	515.9	763.4	242.2
1986/87	337.7	2.4	823.9	85.0	531.0	788.2	277.9
1987/88	325.0	2.4	787.1	88.1	541.6	799.5	263.3
1988/89	324.9	2.2	723.0	99.0	514.2	782.9	203.4
1989/90	322.6	2.5	794.5	105.0	539.4	815.4	182.5
1990/91	317.5	2.6	828.6	88.9	536.8	815.9	195.2
1991/92	322.8	2.5	812.5	96.2	536.0	813.3	194.4
1992/93	326.4	2.7	869.3	91.9	551.2	841.9	219.3
1993/94	318.4	2.5	798.1	86.5	546.0	836.4	181.1
1994/95	323.5	2.7	869.2	98.6	567.0	853.8	196.5
1995/96	314.7	2.5	800.9	88.2	544.1	835.5	161.8
1996/97	323.4	2.8	909.0	94.4	572.4	869.2	201.7

	<b>Area Harvested</b>	<b>Yield</b>	<b>Production TY</b>	<b>Exports</b>	<b>Feed Dom. Consumpti</b>	<b>Domestic Consumpti</b>	<b>Ending Stocks</b>
1997/98	311.2	2.8	881.2	85.8	578.9	867.2	215.8
1998/99	308.5	2.9	890.9	96.7	574.8	869.2	237.4
1999/00	299.7	2.9	877.6	104.8	585.5	882.4	232.2
2000/01	296.7	2.9	862.3	104.4	588.9	884.4	210.1
2001/02	301.4	3.0	893.7	102.7	600.4	906.6	197.1
2002/03	293.0	3.0	875.1	104.6	595.0	902.3	169.9
2003/04	306.9	3.0	915.9	102.7	614.3	945.8	139.9
2004/05	300.4	3.4	1,014.1	102.1	641.3	975.8	178.2
2005/06	301.3	3.2	977.5	109.3	634.5	988.8	166.9
2006/07	303.3	3.2	962.4	106.2	638.4	1,011.4	118.0

Notes: Wheat and coarse grains trade data are on July June years through 1975/76. From 1976/77 to the pr on an Oct/Sept trade year. 'Stocks as a Percent of Consumption' represents the ratio of marketing year endi

**World Corn and Barley: Supply and Demand**

Millions of Metric Tons/Hectares

	Area Harvested	Yield	Production	TY Exports	Feed Dom. Consumpti	Domestic Consumpti	Ending Stocks
<b>Corn</b>							
1977/78	125.8	2.9	365.4	63.6	226.7	356.5	77.3
1978/79	126.0	3.1	392.1	67.1	247.0	378.0	91.4
1979/80	127.3	3.3	425.6	73.2	277.1	405.8	111.2
1980/81	131.2	3.1	408.7	77.8	279.2	417.9	102.5
1981/82	133.0	3.3	441.8	66.9	286.1	417.1	127.2
1982/83	125.2	3.5	439.9	63.2	293.5	417.3	149.8
1983/84	119.7	2.9	348.3	61.1	271.1	409.1	89.0
1984/85	129.0	3.6	458.4	66.1	289.5	429.2	118.2
1985/86	131.0	3.7	479.0	53.8	284.3	419.5	177.7
1986/87	131.9	3.6	475.4	56.9	304.6	448.3	204.9
1987/88	127.2	3.5	451.0	58.8	316.5	458.3	197.5
1988/89	126.3	3.2	400.9	66.0	306.8	453.2	145.2
1989/90	127.5	3.6	462.0	74.5	324.8	474.4	132.8
1990/91	129.4	3.7	482.1	58.8	318.3	473.6	141.2
1991/92	132.7	3.7	493.2	63.0	334.3	493.6	140.9
1992/93	133.4	4.0	536.1	62.6	348.6	512.5	162.5
1993/94	130.9	3.6	476.0	57.4	342.0	509.2	129.3
1994/95	135.3	4.1	559.0	71.9	371.1	535.3	152.9
1995/96	134.9	3.8	515.9	64.8	364.8	536.3	132.5
1996/97	141.6	4.2	592.6	66.7	387.3	559.8	165.3
1997/98	136.2	4.2	573.8	63.1	400.9	573.3	165.7
1998/99	139.2	4.4	605.7	68.7	404.2	581.1	190.4
1999/00	139.0	4.4	607.5	73.5	422.3	605.0	192.9
2000/01	137.1	4.3	590.5	76.4	427.7	610.2	173.2
2001/02	137.8	4.4	599.7	74.6	435.9	623.1	149.8
2002/03	137.7	4.4	603.0	78.4	433.1	627.3	125.5
2003/04	141.9	4.4	625.7	79.2	444.5	647.7	103.5
2004/05	144.7	4.9	712.3	76.5	471.5	685.0	130.8
2005/06	145.6	4.8	695.6	83.1	474.6	701.4	125.0
2006/07	146.1	4.7	687.2	83.0	477.9	725.8	86.4
<b>Barley</b>							
1977/78	83.0	1.9	157.1	10.1	113.8	158.9	19.9
1978/79	80.9	2.2	175.6	10.6	123.9	171.2	24.3
1979/80	84.0	1.8	153.8	10.2	118.5	159.2	18.9
1980/81	78.6	2.0	157.4	13.5	111.2	158.3	18.3
1981/82	81.6	1.8	149.5	14.5	109.4	151.8	16.0
1982/83	78.8	2.0	161.2	16.0	113.4	155.8	21.5
1983/84	79.8	2.0	158.5	15.8	122.0	164.5	15.5
1984/85	79.2	2.2	170.5	17.4	122.4	162.9	23.1
1985/86	80.0	2.2	173.6	17.7	127.8	167.2	29.6
1986/87	79.6	2.2	178.1	18.3	132.1	173.8	33.8
1987/88	78.7	2.2	175.3	18.3	129.7	173.6	33.4
1988/89	76.4	2.1	164.0	19.0	121.9	166.2	31.1
1989/90	73.6	2.3	166.1	18.5	126.2	170.5	26.7
1990/91	72.9	2.5	179.0	19.6	130.4	175.9	29.8
1991/92	76.4	2.2	169.8	19.4	120.2	166.3	33.3
1992/93	73.4	2.3	166.2	16.4	118.9	165.6	33.3
1993/94	74.7	2.3	169.2	18.8	123.7	168.9	33.5
1994/95	73.2	2.2	160.7	15.3	121.1	165.8	28.5
1995/96	69.0	2.1	141.6	13.4	107.7	150.6	19.5
1996/97	66.5	2.3	153.6	17.9	106.2	149.4	23.6

	<b>Area Harvested</b>	<b>Yield</b>	<b>Production TY</b>	<b>Exports</b>	<b>Feed Dom. Consumpti</b>	<b>Domestic Consumpti</b>	<b>Ending Stocks</b>
1997/98	64.9	2.4	154.3	12.8	103.7	145.8	32.2
1998/99	60.7	2.2	135.7	17.8	98.6	139.0	28.9
1999/00	55.3	2.3	127.5	18.8	94.0	132.3	24.0
2000/01	54.6	2.4	132.8	16.9	94.4	134.1	22.8
2001/02	56.8	2.5	142.3	17.6	95.1	136.3	28.7
2002/03	56.4	2.4	134.8	16.8	94.3	136.4	27.2
2003/04	60.1	2.4	142.9	14.8	102.6	147.5	22.6
2004/05	58.4	2.6	154.2	17.3	100.3	143.5	33.3
2005/06	56.4	2.4	138.0	17.8	97.3	142.3	28.9
2006/07	57.4	2.4	138.3	15.5	101.0	145.3	21.9

Notes: Coarse grains trade data are on July June years through 1975/76. From 1976/77 to the present, coar Oct/Sept trade year. "Stocks as a Percent of Consumption" represents the ratio of marketing year ending stc

**World Rice: Supply and Demand**  
**Millions of Metric Tons/Hectares**

	<b>Area Harvested</b>	<b>Yield</b>	<b>Rough Production</b>	<b>Production TY</b>	<b>Exports</b>	<b>Domestic Consumpti</b>	<b>Ending Stocks</b>
<b>Rice, Milled</b>							
1977/78	143.4	2.6	368.8	250.6	9.5	244.7	44.8
1978/79	143.6	2.7	385.4	262.4	11.8	252.3	54.8
1979/80	141.2	2.7	376.6	256.8	12.0	257.6	54.0
1980/81	144.4	2.7	397.0	269.9	11.9	271.2	52.6
1981/82	144.4	2.8	408.3	277.9	11.3	280.0	50.5
1982/83	140.5	3.0	418.3	285.0	11.2	278.7	56.8
1983/84	144.6	3.1	450.9	306.9	11.9	294.4	69.3
1984/85	144.2	3.2	464.9	316.8	11.0	298.4	87.7
1985/86	144.8	3.2	467.3	318.0	11.8	307.9	97.7
1986/87	144.8	3.3	481.9	316.0	12.9	310.4	103.3
1987/88	141.7	3.3	465.0	315.3	11.4	313.3	105.3
1988/89	146.5	3.4	491.0	332.2	14.0	325.8	111.7
1989/90	147.6	3.5	510.4	345.3	11.7	336.4	120.6
1990/91	146.7	3.5	518.9	351.0	12.3	345.0	126.7
1991/92	147.5	3.5	522.9	353.3	14.4	353.1	126.8
1992/93	146.5	3.6	524.2	354.0	14.9	357.5	123.3
1993/94	145.4	3.6	526.5	355.0	16.6	359.2	119.1
1994/95	147.5	3.7	539.5	363.9	20.8	365.2	117.8
1995/96	148.2	3.7	547.2	368.7	19.7	368.1	118.4
1996/97	150.0	3.8	564.5	380.9	18.9	378.7	120.6
1997/98	151.2	3.8	574.4	386.9	27.6	379.6	127.9
1998/99	152.7	3.8	586.5	394.6	24.8	388.1	134.3
1999/00	155.2	3.9	608.0	408.8	22.8	398.0	145.1
2000/01	151.5	3.9	593.2	398.7	24.4	394.5	149.2
2001/02	150.5	3.9	593.9	399.1	27.9	412.0	136.4
2002/03	145.8	3.9	562.1	377.5	27.6	407.4	106.5
2003/04	148.1	3.9	584.3	391.8	27.2	412.9	85.4
2004/05	150.4	4.0	595.7	400.5	29.0	407.7	78.1
2005/06	152.2	4.1	618.7	415.5	27.7	413.2	80.4
2006/07	152.1	4.1	618.1	415.0	28.9	417.7	77.7

Notes: Stocks, exports and consumption are expressed on a milled basis in marketing years. "Stocks as a Pe represents the ratio of marketing year ending stocks to total consumption.



---

## **ENDNOTES TO GRAIN: WORLD MARKETS AND TRADE**

### **REGIONAL TABLES**

**North America:** Canada, Mexico, the United States.

**Latin America:** Central America, the Caribbean, South America.

**EU:** Austria, Belgium/Luxembourg, Cyprus, Czech Republic, Denmark, Estonia, Finland, France, Germany, Greece, Hungary, Ireland, Italy, Latvia, Lithuania, Malta, Netherlands, Poland, Portugal, Slovakia, Slovenia, Spain, Sweden, United Kingdom.

**Former Soviet Union:** Armenia, Azerbaijan, Belarus, Georgia, Kazakhstan, Kyrgyzstan, Moldova, Russia, Tajikistan, Turkmenistan, Ukraine, Uzbekistan.

**Other Europe:** Albania, Azores, Bosnia and Herzegovina, Bulgaria, Croatia, Gibraltar, Iceland, Macedonia, Norway, Romania, Serbia and Montenegro, Switzerland, Yugoslavia.

**Middle East:** Bahrain, Iran, Iraq, Israel, Jordan, Kuwait, Lebanon, Oman, Qatar, Saudi Arabia, Syria, Turkey, United Arab Emirates, Yemen.

**North Africa:** Algeria, Egypt, Libya, Morocco, Tunisia.

**Other Africa:** all African countries except North Africa.

**South Asia:** Afghanistan, Bangladesh, Bhutan, India, Nepal, Pakistan, Sri Lanka, Maldives.

**Southeast Asia:** Brunei, Burma, Cambodia, Indonesia, Laos, Malaysia, Philippines, Singapore, Thailand, Vietnam.

**East Asia:** China, Hong Kong, Japan, South Korea, North Korea, Macau, Mongolia, Taiwan.

**Oceania:** Australia, Fiji, New Zealand, Papua New Guinea.

### **OTHER NOTES**

**Stocks:** Unless otherwise stated, stock data are based on an aggregate of differing local marketing years and should not be construed as representing world stock levels at a fixed point in time.

**Consumption:** World totals for consumption reflect total utilization, including food, seed, industrial, feed, and waste; as well as differences in marketing year imports and marketing year exports. Consumption statistics for regions and individual countries, however, reflect food, seed, industrial, feed, and waste only.

**EU Consolidation:** The trade figures for the EU-25 for the years 1999/00 through 2002/03 are inflated by the two-way trade between the two groups (EU-15 and acceding 10). Over the past 6 years, this “intra-trade” has averaged about 700,000 tons for wheat, 350,000 tons each for corn and barley, and 150,000 tons for rye. The trade figures also include intra-trade between members of the acceding 10. From 2003/04 onward, all intra-trade has been removed.

**Statistics:** (1) Wheat trade statistics include wheat, flour, and selected products on a grain equivalent basis. (2) Rice trade statistics include rough, brown, milled, and broken on a milled equivalent basis. (3) Coarse grains statistics include corn, barley, sorghum, oats, rye, millet, and mixed grains but exclude trade in barley malt, millet, and mixed grains.

---

**Unaccounted:** This term includes grain in transit, reporting discrepancies in some countries, and trade to countries outside the USDA database.

The Field Crops and Livestock Branch, Industry and Sector Analysis Division, Foreign Agricultural Service, USDA, Washington DC 20250, prepared this circular. Information is gathered from official statistics of foreign governments and other foreign source materials, reports of U.S. agricultural attachés and Foreign Service officers, office research, and related information. Further information may be obtained by writing the Division or telephoning (202) 720-6590.

**Note:** The previous report in this series was the Grain: World Markets and Trade Foreign Agricultural Service Circular FG 12-06 December 2006. For further details on world grain production, see World Agricultural Production Foreign Agricultural Service Circular WAP 01-07 January 2007.

This circular is available in its entirety on the World Wide Web via the Foreign Agricultural Service Home Page. The address is: <http://www.fas.usda.gov>