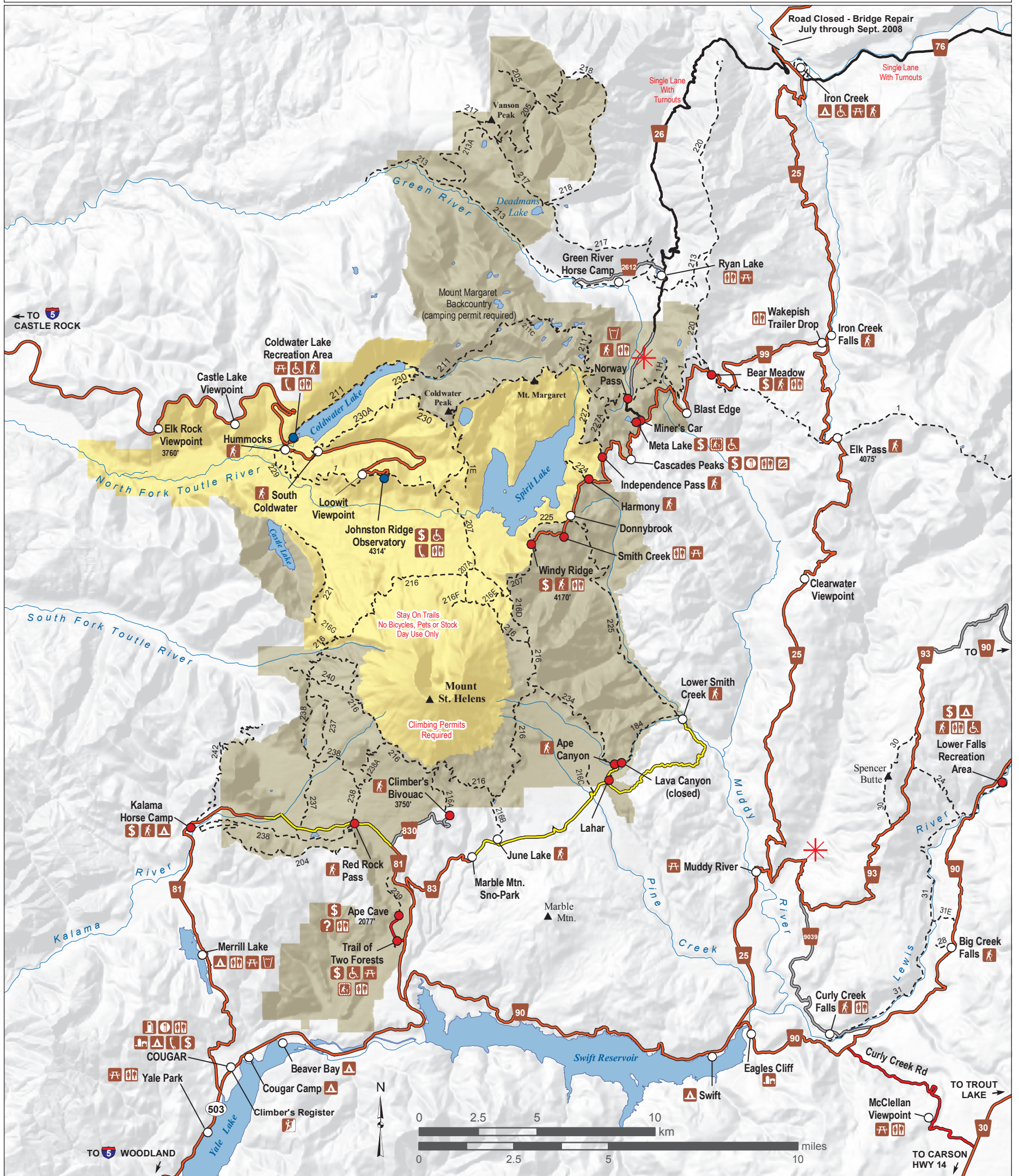




Mount St. Helens National Volcanic Monument



Mount St. Helens National Volcanic Monument	Information	Trail Access	Restrooms	Fuel	Indicates road blocked due to flood damage. Repair is expected in 2008 or 2009. For updated information and status of repairs: http://www.fs.fed.us/gpnf/recreation/current-conditions/ or call (360)449-7800	Paved Road
Restricted Area	Passes Sold	Telephone	Water	Gift Shop		Single lane Road, Paved with turnouts
Free Use Site	Barrier Free	Picnic Area	Food	General Store		Gravel Road
Recreation Day Pass Required	Campground	Interpretive Trail				Road Closed by Flood Damage
Monument Pass Required						Trail

Elevations are in feet

This map is intended for general reference and is approximate in general proportions.