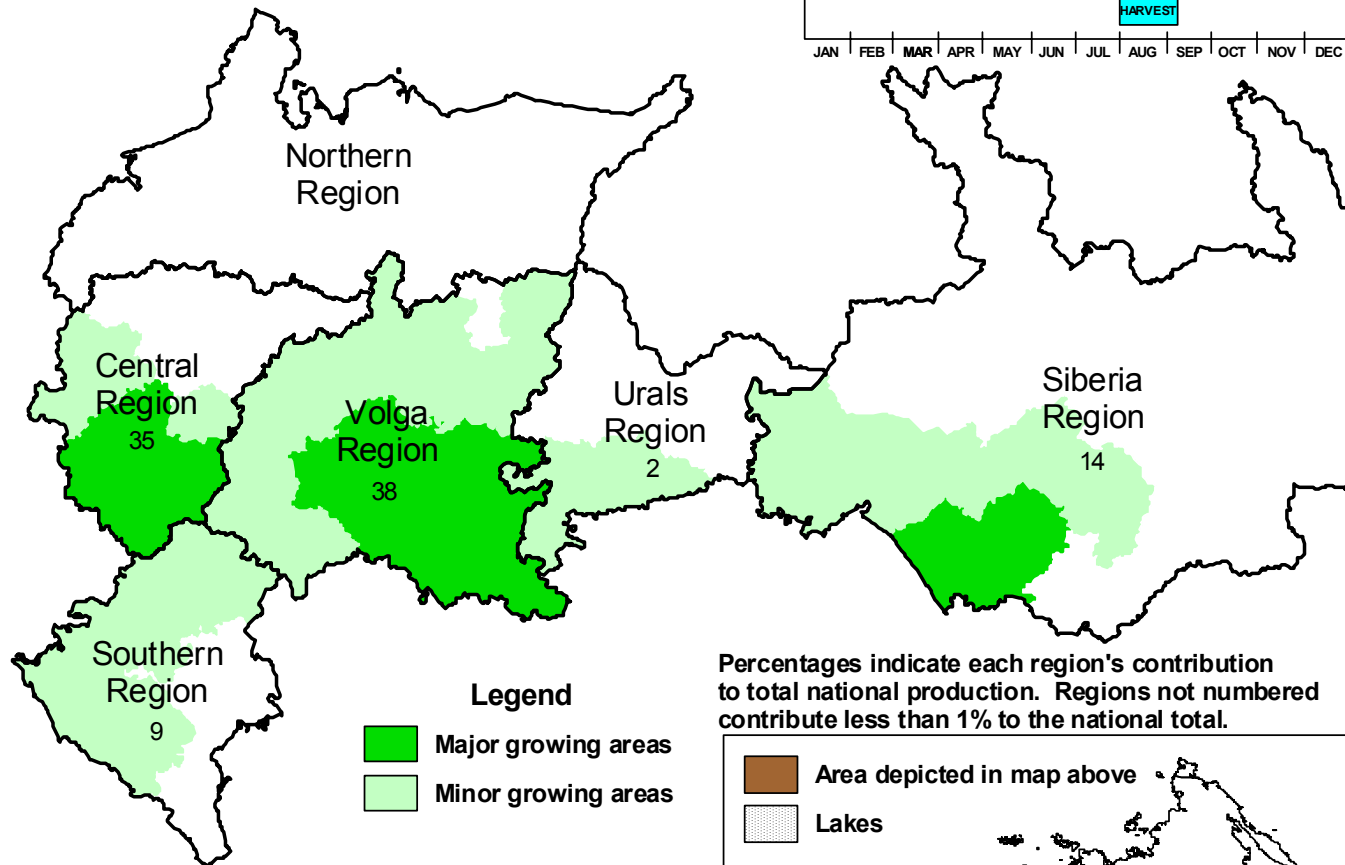
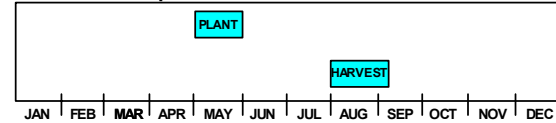


# Russia: Buckwheat

Buckwheat crop calendar for most of Russia



**Legend**  
 Major growing areas  
 Minor growing areas

Percentages indicate each region's contribution to total national production. Regions not numbered contribute less than 1% to the national total.



- Major growing areas combined account for 75% of total national production
- Major and minor growing areas combined account for 99% of total national production
- Major and minor growing areas and country production percentages based upon averaged oblast-level data from 1996-2000.

Source: Sovecon Agrokhleb Bulletin Statistics and Forecasts  
 February 18, 2003 Issue No.4 (41), 2002.

