

Brazil *Citrus

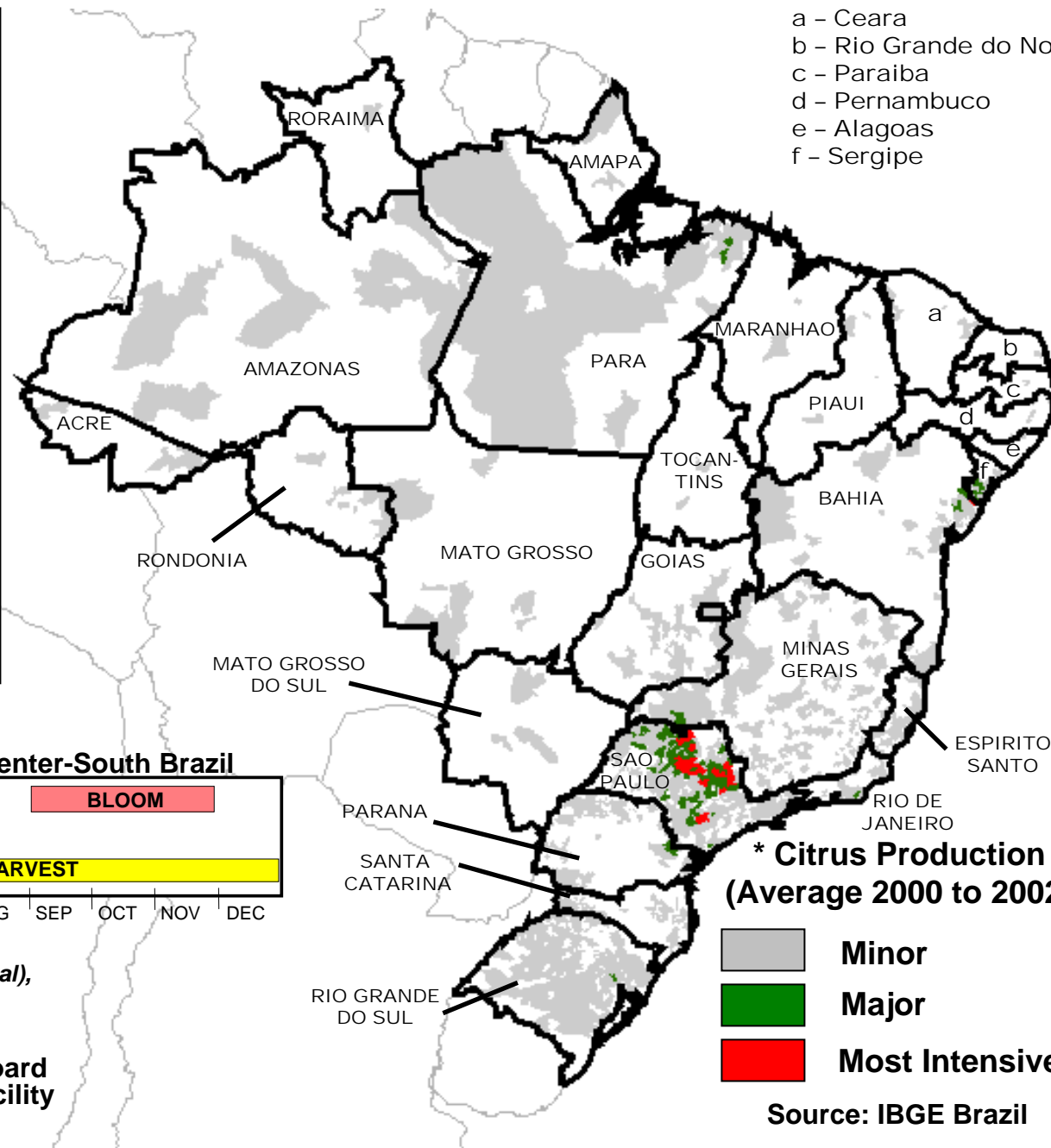
* State-Level Production (as % of total)

Sao Paulo	80
Bahia	4
Sergipe	3
Minas Gerais	4
Parana	3
Rio Grande do Sul	3
Para	1
Rio De Janeiro	1
Other States	1

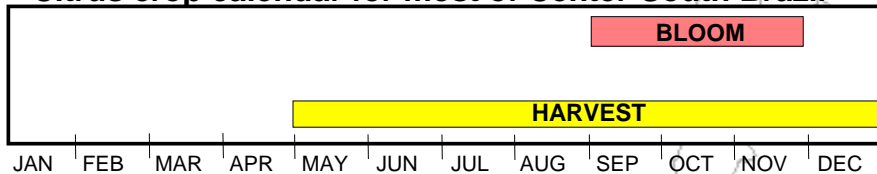
•1999/2000 to 2001/02 Average

Source: IBGE Brazil

a - Ceara
 b - Rio Grande do Norte
 c - Paraiba
 d - Pernambuco
 e - Alagoas
 f - Sergipe



* Citrus crop calendar for most of Center-South Brazil



* Citrus comprised of oranges (89% of total), lemons (6%), and tangerines (5%)

* Citrus Production (Average 2000 to 2002)

Grey box: Minor
 Green box: Major
 Red box: Most Intensive

Source: IBGE Brazil