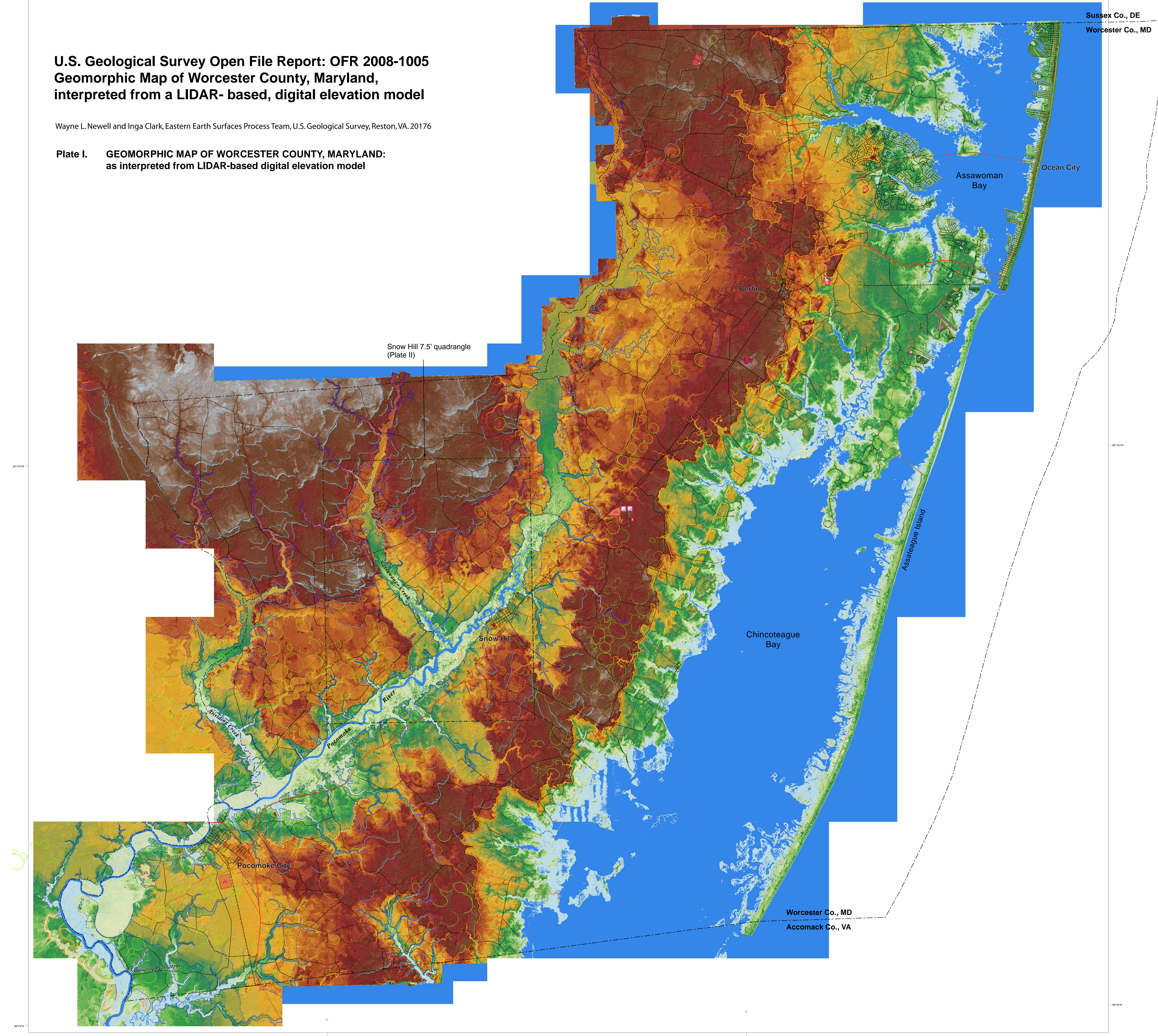


**U.S. Geological Survey Open File Report: OFR 2008-1005
Geomorphic Map of Worcester County, Maryland,
interpreted from a LIDAR-based, digital elevation model**

Wayne L. Newell and Inga Clark, Eastern Earth Surfaces Process Team, U.S. Geological Survey, Reston, VA, 20176

**Plate I. GEOMORPHIC MAP OF WORCESTER COUNTY, MARYLAND:
as interpreted from LIDAR-based digital elevation model**



Legend

Elevation, cm

-43 - 0 (below MSL)	950 - 1000
0 - 41 (MSL-MHW)	1000 - 1050
41 - 50 (spring tides)	1050 - 1100
50 - 75	1100 - 1150
75 - 100	1150 - 1200
100 - 150	1200 - 1250
150 - 200	1250 - 1300
200 - 250	1300 - 1350
250 - 300	1350 - 1400
300 - 350	1400 - 1500
350 - 400	1500 - 1600
400 - 500	1600 - 1700
500 - 600	1700 - 1800
600 - 700	1800 - 2000
700 - 800	2000 - 2500
800 - 900	
900 - 950	

- man-made structures / excavations
- dunes / dune fields
- beach ridges / former shoreline positions
- Raised-rim basins
- Pocomoke River and tributaries floodplain
- meander pattern / braided stream channels
- areas of late Holocene paleoinlets closed in and cut off by the modern barrier island complex
- rails
- roads
- County boundary

