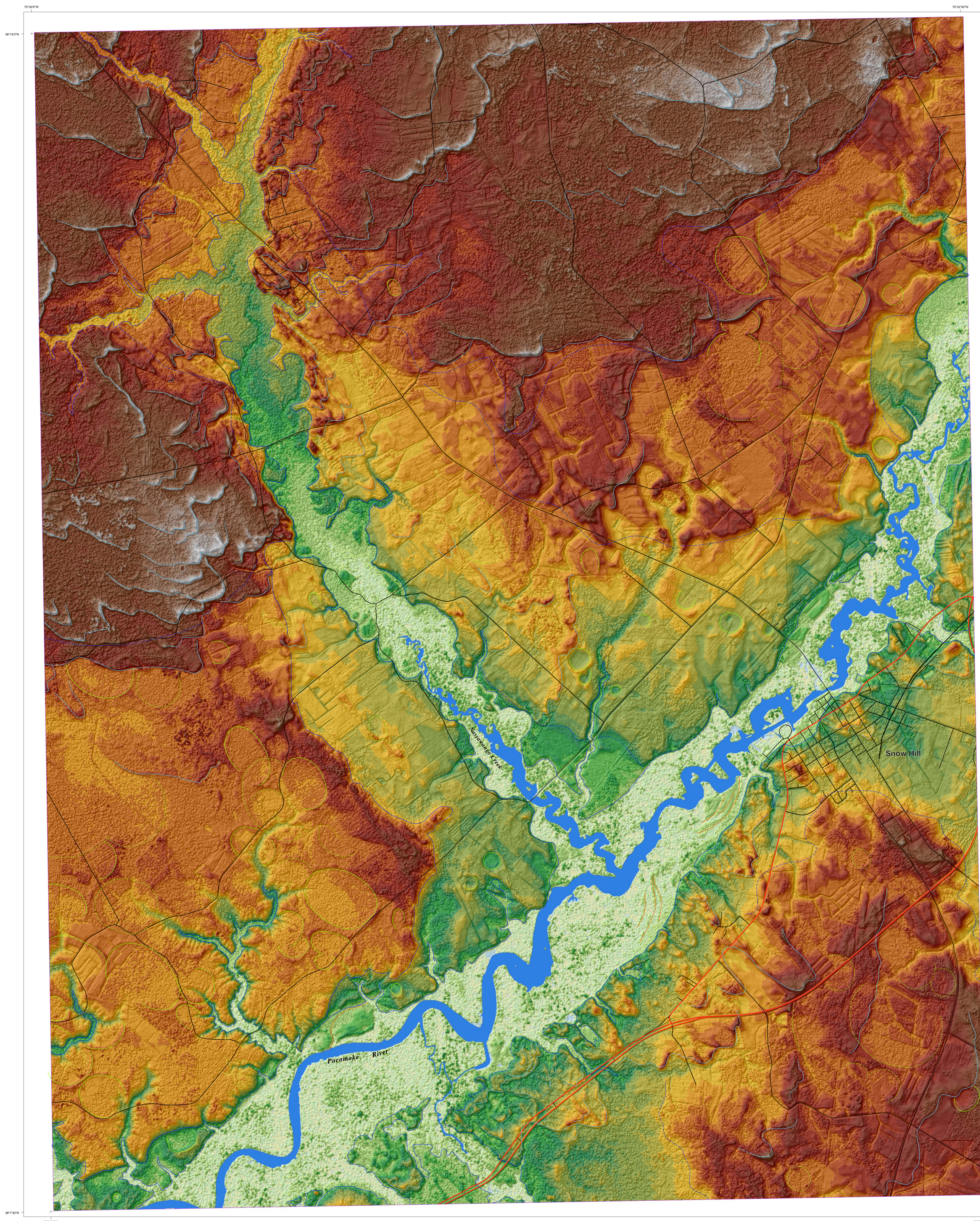


**U.S. Geological Survey Open File Report: OFR 2008-1005
Geomorphic Map of Worcester County, Maryland,
interpreted from a LIDAR- based, digital elevation model**

Wayne L. Newell and Inga Clark, Eastern Earth Surfaces Process Team, U.S. Geological Survey, Reston, VA. 20176

**Plate II. GEOMORPHIC MAP OF SNOW HILL 7.5' QUADRANGLE,
WORCESTER COUNTY, MARYLAND:
as interpreted from LIDAR-based digital elevation model**

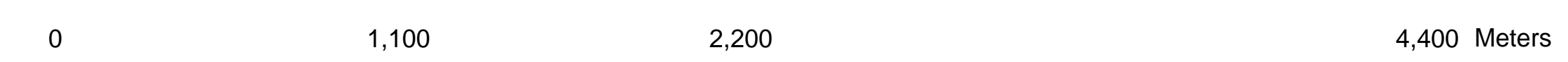


Legend

Elevation, cm

	-43 - 0 (below MSL)		950 - 1000
	0 - 41 (MSL-MHW)		1000 - 1050
	41 - 50 (spring tides)		1050 - 1100
	50 - 75		1100 - 1150
	75 - 100		1150 - 1200
	100 - 150		1200 - 1250
	150 - 200		1250 - 1300
	200 - 250		1300 - 1350
	250 - 300		1350 - 1400
	300 - 350		1400 - 1500
	350 - 400		1500 - 1600
	400 - 500		1600 - 1700
	500 - 600		1700 - 1800
	600 - 700		1800 - 2000
	700 - 800		2000 - 2500
	800 - 900		
	900 - 950		

- dunes / dune fields
- Raised-rim basins
- Pocomoke River and tributaries floodplain
- meander pattern / braided stream channels
- rails
- roads



Maryland State Plane Projection
NAD83 datum