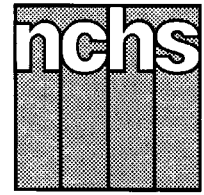


Monthly Vital Statistics Report



Provisional Data From the CENTERS FOR DISEASE CONTROL AND PREVENTION/National Center for Health Statistics

Births, Marriages, Divorces, and Deaths for September 1994

Mortality Surveillance System
pages 4-7

Motor vehicle accidents:
15-24 years of age by sex
65 years and over by sex

State Maps
pages 8 and 9

Motor vehicle accidents by sex

Births

According to provisional reports, an estimated 327,000 births occurred in the United States during September 1994. This was a decrease of 8 percent from the provisional number of births reported for September 1993 (356,000). The birth rate, 15.2 live births per 1,000 population, was 10 percent lower than the rate of 16.8 for September 1993. The fertility rate, 67.0 live births per 1,000 women aged 15-44 years, was 9 percent lower than the comparable rate for September 1993 (73.3). The seasonally adjusted fertility rate (63.1) was 8 percent lower than the comparable rate for September 1993 (68.6).

During the first three quarters of 1994, an estimated 3,013,000 births occurred, a 1-percent decrease from the 3,056,000 reported for the first three quarters of 1993. The birth rate during this period declined by 3 percent from 15.9 in 1993 to 15.5 in 1994.

An estimated 3,995,000 live births occurred in the 12-month period ending with September 1994, a decline of 2 percent from the 4,058,000 births reported for the same period a year earlier. The birth rate of 15.4 was 3 percent lower than the rate of 15.8 for the preceding 12 months. The fertility rate for the most recent 12-month period was 67.4, 2 percent lower than the rate for the 12 months ending with September 1993 (68.7).

Provisional Vital Statistics for the United States

[Rates for infant deaths are deaths under 1 year per 1,000 live births; fertility rates are live births per 1,000 women aged 15-44 years; all other rates are per 1,000 total population. Data are subject to monthly reporting variation; see Technical notes]

Item	September				January-September				12 months ending with September				
	Number		Rate		Number		Rate		Number		Rate		
	1994	1993	1994	1993	1994	1993	1994	1993	1994	1993	1994	1993	1992
Live births	327,000	356,000	15.2	16.8	3,013,000	3,056,000	15.5	15.9	3,995,000	4,058,000	15.4	15.8	16.1
Fertility rate	67.0	73.3	67.9	69.2	67.4	68.7	69.6
Deaths	178,000	174,000	8.3	8.2	1,724,000	1,698,000	8.9	8.8	2,293,000	2,240,000	8.8	8.7	8.6
Infant deaths	2,500	2,600	7.8	7.5	23,800	25,000	8.0	8.3	32,000	33,500	8.1	8.3	8.5
Natural increase	149,000	182,000	6.9	8.6	1,289,000	1,358,000	6.6	7.1	1,702,000	1,818,000	6.6	7.1	7.5
Marriages	225,000	218,000	10.5	10.3	1,787,000	1,769,000	9.2	9.2	2,353,000	2,348,000	9.0	9.1	9.3
Divorces	99,000	101,000	4.6	4.8	892,000	895,000	4.6	4.6	1,184,000	1,196,000	4.6	4.7	4.7
Population base (in millions)	261.2	258.4	260.0	257.2	254.3

NOTES: Figures include revisions received from the States. Twelve-month figures for the current year reflect revisions received for previous months, and figures for earlier years may differ from those previously published.



U.S. DEPARTMENT OF HEALTH AND HUMAN SERVICES
Public Health Service
Centers for Disease Control and Prevention
National Center for Health Statistics



These lower rates continue the generally downward trend observed since early 1991.

Natural increase

As a result of natural increase, the excess of births over deaths, an estimated 149,000 people, or 6.9 persons per 1,000 population were added to the population during September 1994.

For the 12-month period ending with September 1994, 1,702,000 persons were added to the population. This represented a rate of natural increase of 6.6, 7 percent lower than the rate of 7.1 for the preceding 12-month period. The decline in the rate of natural increase was due to a decrease in the birth rate and an increase in the death rate.

Marriages

An estimated 225,000 couples married in September 1994, a 3-percent increase over the number for September a year earlier (218,000). The marriage rate per 1,000 population for September was 2 percent higher in 1994 (10.5) than in 1993 (10.3).

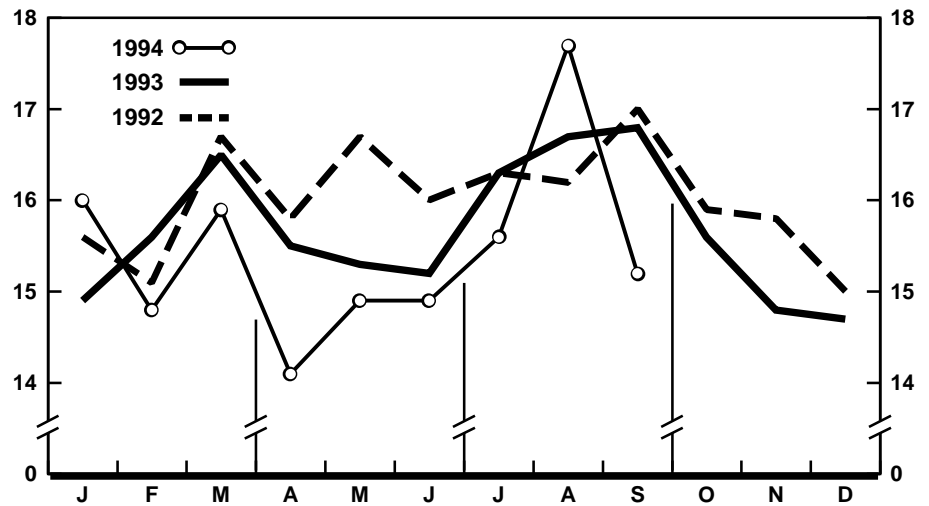
Marriages performed in the first three quarters of 1994 (1,787,000) numbered 1 percent more than for the comparable period in 1993 (1,769,000). The marriage rate for the period was 9.2 in 1994 and 1993.

The number of marriages performed during the 12 months ending with September 1994 was 2,353,000, a slight increase compared with the same period a year earlier (2,348,000). Although the number was slightly higher, the marriage rate for the current 12-month period (9.0) was 1 percent lower than for the period ending with September 1993 (9.1).

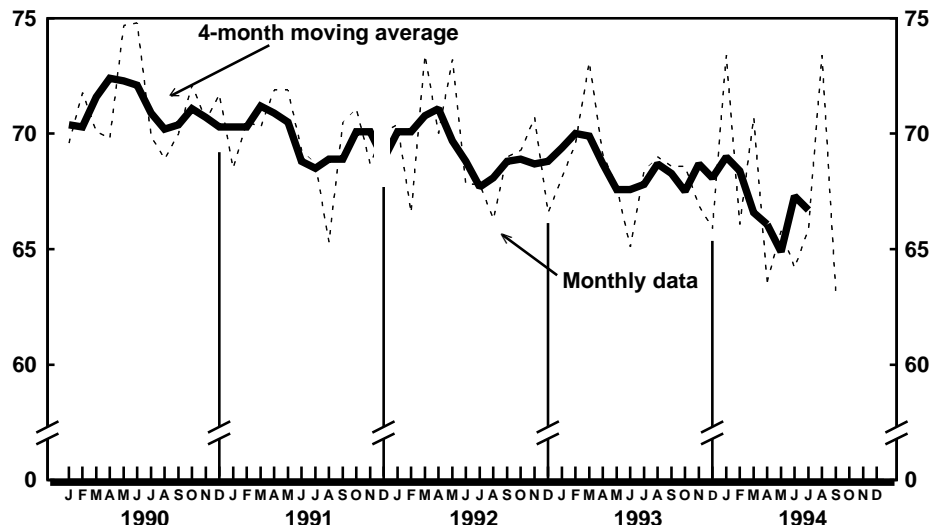
Divorces

The number of divorces granted in September was 2 percent fewer in 1994 (99,000) than in 1993 (101,000). The divorce rate per 1,000 population for September was 4.6 in 1994, 4 percent lower than in 1993 (4.8).

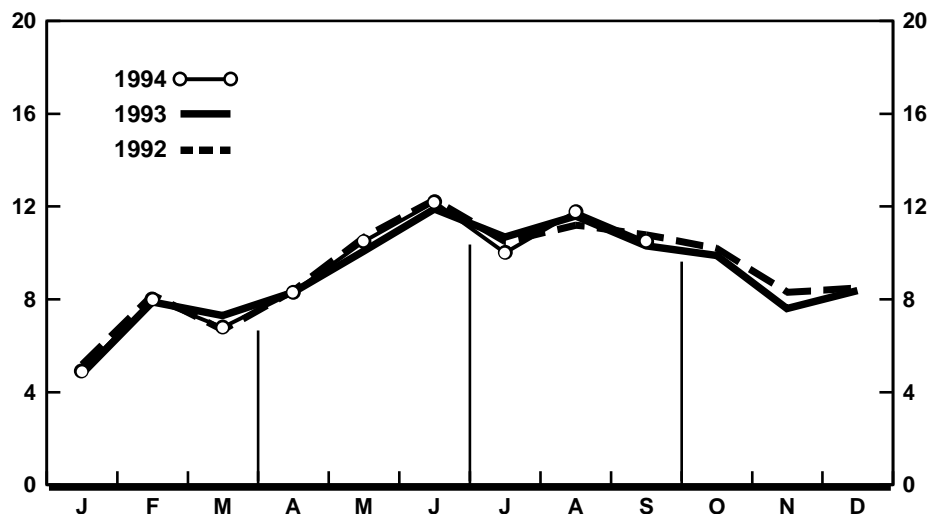
Divorces granted during the first 9 months of 1994 (892,000) were slightly lower than for the same period in 1993 (895,000). The divorce rate for January–September was 4.6 in 1994 and 1993.



Provisional birth rates per 1,000 population by month: United States, 1992–94



Provisional seasonally adjusted fertility rates per 1,000 women aged 15–44 years: United States, 1990–94



Provisional marriage rates per 1,000 population by month: United States, 1992–94

For the 12-month period ending with September 1994, there were an estimated 1,184,000 divorces, a 1-percent decline compared with the 12-month period ending with September 1993 (1,196,000). The divorce rate was 2 percent lower for the current 12-month period (4.6) than for the same period a year earlier (4.7).

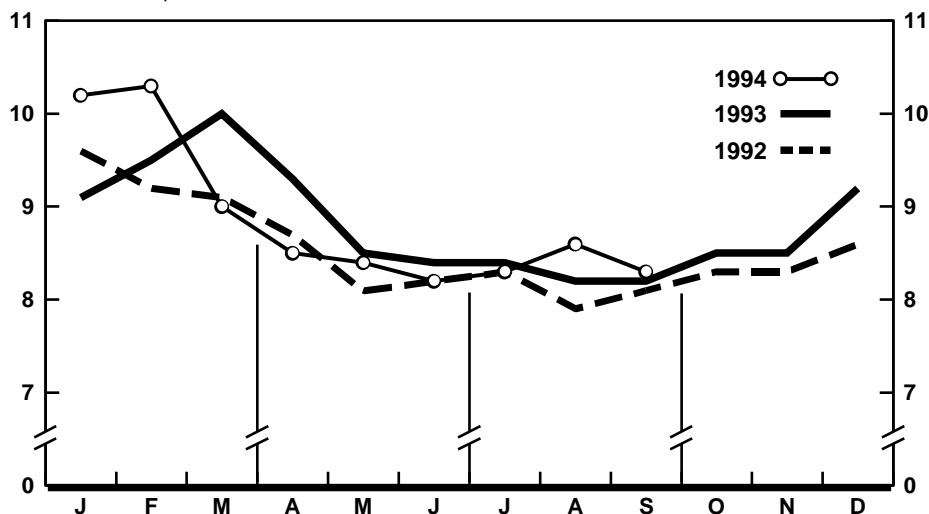
Deaths

For September 1994 there were an estimated 178,000 deaths in the United States. The death rate was 8.3 deaths per 1,000 population, 1 percent higher than the rate of 8.2 for September a year earlier. Among the 178,000 deaths for September 1994 were 2,500 deaths at ages under 1 year.

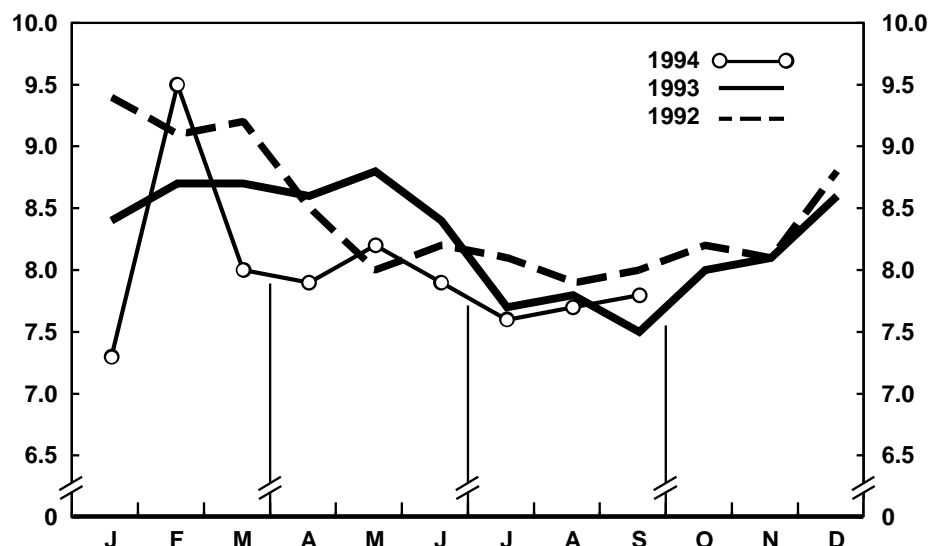
According to provisional statistics, there were 1,724,000 deaths during the first 9 months of 1994, 2 percent higher than the number estimated for January–September 1993 (1,698,000). The death rate, 8.9 per 1,000 population, was 1 percent higher than the rate of 8.8 for January–September 1993. Among the 1,724,000 deaths for January–September 1994 were 23,800 deaths at ages under 1 year, yielding an infant mortality rate of 8.0 per 1,000 live births. This rate was 4 percent lower than the rate of 8.3 for the first 9 months of 1993.

The death rate for the 12 months ending with September 1994 was 8.8 deaths per 1,000 population, 1 percent higher than the rate of 8.7 for the comparable 12-month period a year earlier. The infant mortality rate for this 12-month period was 8.1 per 1,000 live births, 2 percent lower than the rate of 8.3 for the 12 months ending with September 1993.

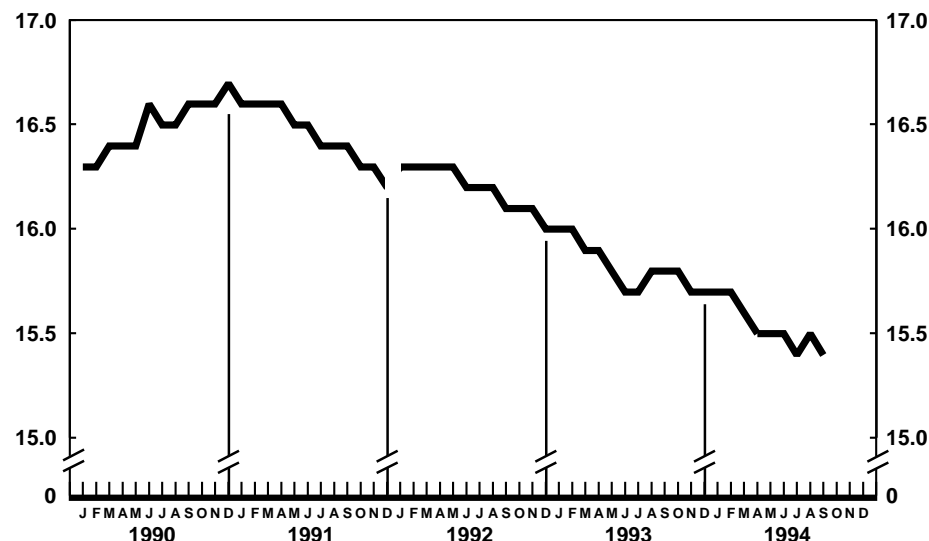
Current Mortality Sample, 12 months ending with August 1994—The provisional death rate for the 12 months ending with August 1994 was 881.5 per 100,000 population, 1 percent higher than the rate of 869.8 for the 12-month period ending August 1993. The provisional age-adjusted death rate for the 12-month period ending with August 1994 was 511.6 per 100,000 U.S. standard million population compared with a rate of 510.0 for the 12-month period ending with August 1993. The change in the age-adjusted death rate was not statistically



Provisional death rates per 1,000 population by month: United States, 1992–94



Provisional infant mortality rates per 1,000 live births by month: United States, 1992–94



Provisional birth rates per 1,000 population for successive 12-month periods ending with month indicated: United States, 1990–94

significant. The age-adjusted death rates control for changes and variations in the age composition of the population; therefore, they are better indicators than crude rates for showing changes in mortality risk over time and for showing differences between race-sex groups within the population. For the race-sex groups, the estimated age-adjusted death rate decreased for black females. By age the death rate for the total population decreased for the age group under 1 year. The death rate increased for the age groups 25–34 years and 85 years and over.

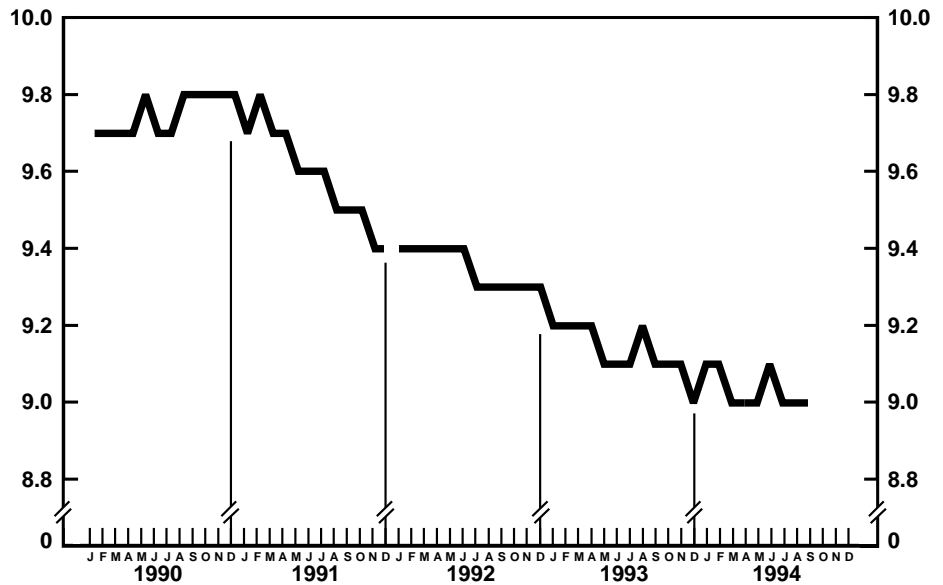
Among the major causes of death, the estimated death rate increased between the two successive 12-month periods for Malignant neoplasms of digestive organs and peritoneum, Cerebrovascular diseases, Chronic obstructive pulmonary diseases and allied conditions, Accidents and adverse effects, Pneumonia and influenza, and Human immunodeficiency virus infection.

The death rate for injury by firearms for the 12 months ending with August 1994 was 15.0 per 100,000 population compared with a rate of 14.6 for the comparable 12-month period a year earlier. The change in the death rate for injury by firearms was not statistically significant.

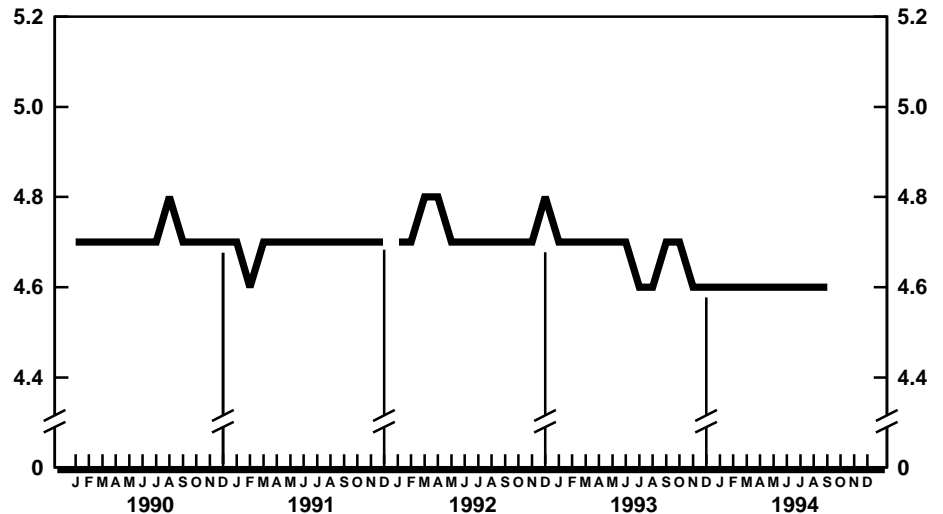
The infant mortality rate for the 12 months ending with August 1994 was 802.1 per 100,000 live births, 4 percent lower than the rate of 835.5 for the same 12-month period a year earlier. For infants under 28 days, the 12-month rate ending with August 1994 was 512.1 compared with a rate of 523.6 for the 12-month period a year earlier. The infant mortality rate for infants 28 days to 11 months was 289.5 compared with a rate of 311.9 for the 12-month period a year earlier. The changes in the mortality rates for infants under 28 days and for those 28 days to 11 months were not statistically significant. Among causes of infant death, the infant mortality rate decreased between the two successive 12-month periods for Sudden infant death syndrome.

Mortality Surveillance System

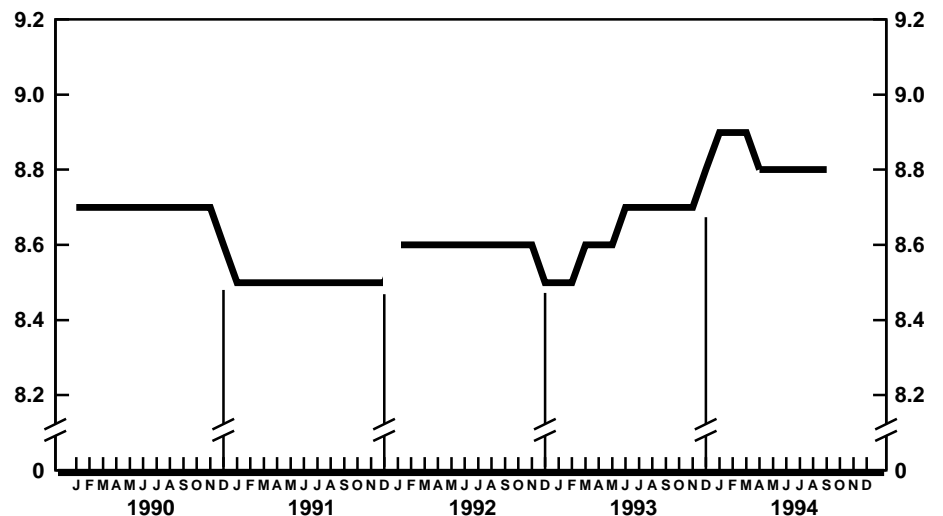
Discussed this month are recent trends in death rates for Motor vehicle accidents for males and females aged



Provisional marriage rates per 1,000 population for successive 12-month periods ending with month indicated: United States, 1990-94



Provisional divorce rates per 1,000 population for successive 12-month periods ending with month indicated: United States, 1990-94



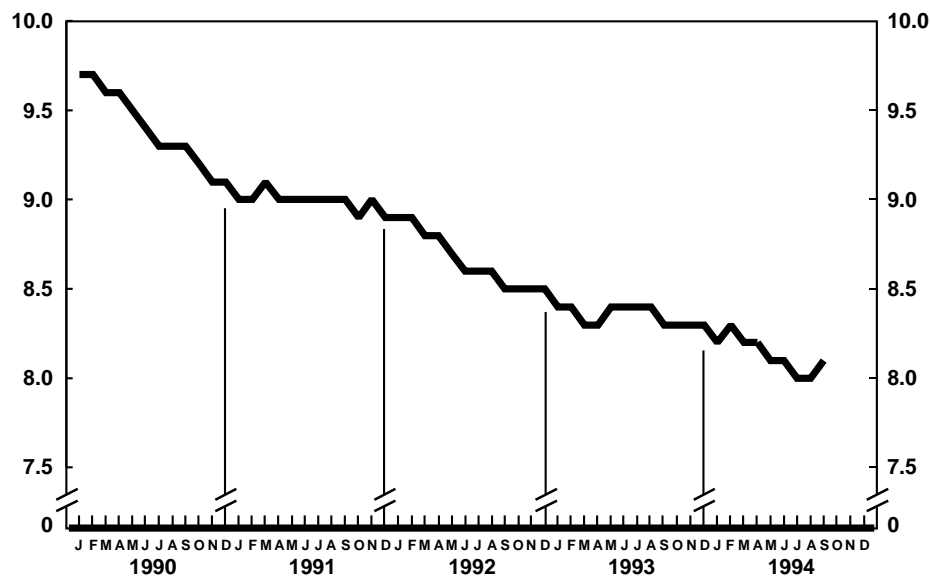
Provisional death rates per 1,000 population for successive 12-month periods ending with month indicated: United States, 1990-94

15–24 years and 65 years and over. In this issue final mortality data are analyzed for data year 1992 and provisional data from January 1985 to March 1994.

In 1992, the latest year for which final mortality data are available, Accidents and adverse effects (accidents) was the leading cause of death for men aged 15–24 years and accounted for 10,253 deaths or 39 percent of deaths from all causes for men in this age group. Motor vehicle accidents, a major component of accident mortality for men aged 15–24 years, accounted for 7,438 deaths or 28 percent of all deaths and 73 percent of all accident deaths for men in this age group. For women aged 15–24 years, accident deaths were the leading cause of death and accounted for 3,409 deaths or 41 percent of deaths from all causes for women in this age group. Motor vehicle accidents for women aged 15–24 years accounted for 2,867 deaths or 34 percent of all deaths and 84 percent of all accident deaths in this age-sex group.

Accidents were the seventh leading cause of death for men aged 65 years and over and accounted for 13,335 deaths or 2 percent of all deaths for men in this age group. Motor vehicle accidents for men aged 65 years and over accounted for 3,970 deaths or 30 percent of all accident deaths for men in this age group. For women aged 65 years and over, accident deaths were also the seventh leading cause of death and accounted for 13,298 deaths or 2 percent of all deaths in this age-sex group. Motor vehicle accidents for women aged 65 years and over accounted for 3,083 deaths or 23 percent of all accident deaths for this age-sex group.

Based on 1992 final data, the Motor vehicle accident death rate for men aged 15–24 years was 2.5 times the rate for women in this age group; for men aged 65 years and over, the rate was 1.9 times the rate for women in this age group. Trends based on provisional data for Motor vehicle accidents for these demographic groups are presented in the Mortality Surveillance System charts and accompanying text that follow.

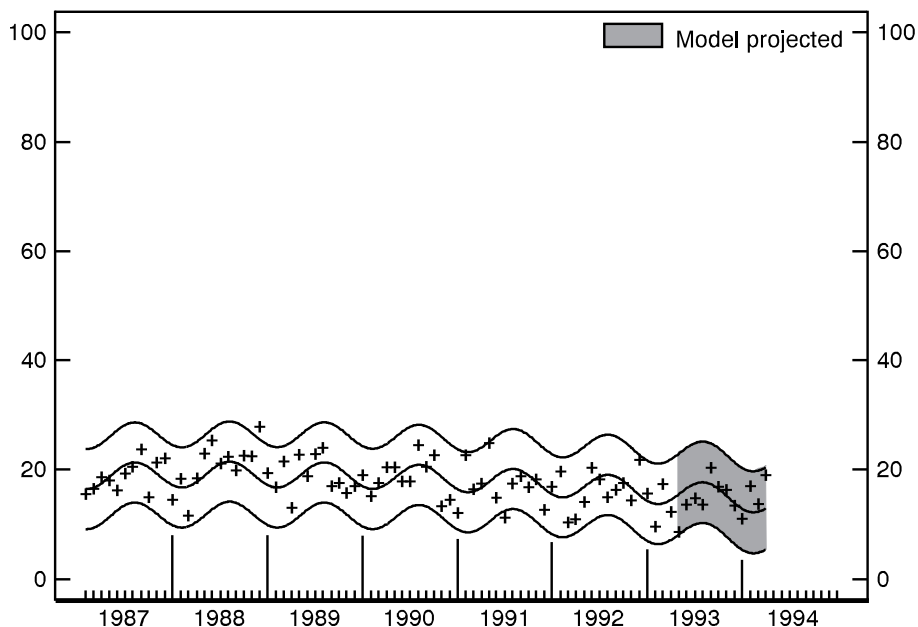


Provisional infant mortality rates per 1,000 live births for successive 12-month periods ending with month indicated: United States, 1990–94

Mortality Surveillance System charts

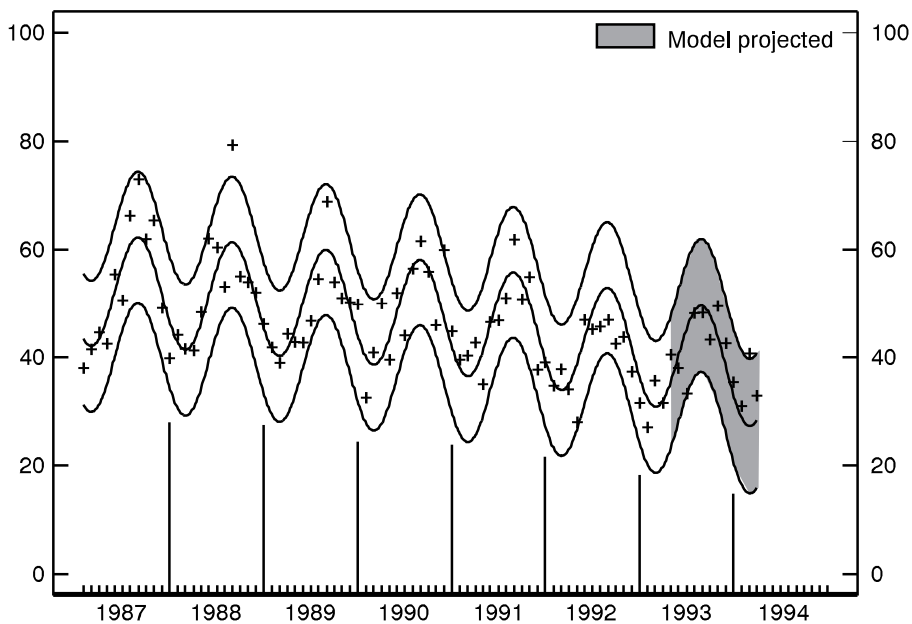
[Observed and fitted provisional monthly death rates and 95-percent prediction intervals. Model fitted using death rates for January 1985–March 1993; projected for April 1993–March 1994. See Technical notes]

Trends in mortality from Motor vehicle accidents are presented in the charts below. Reduction of mortality from Motor vehicle accidents is addressed in *Healthy People 2000* (objective 9.3) (1).



Provisional death rates per 100,000 females 15–24 years of age for Motor vehicle accidents by month: United States, 1987–94

- For the modeled period, provisional death rates have decreased since 1990.
- For the projection period, observed provisional monthly death rates fell within 95-percent prediction intervals.
- Mortality shows a seasonal pattern with death rates higher in summer.



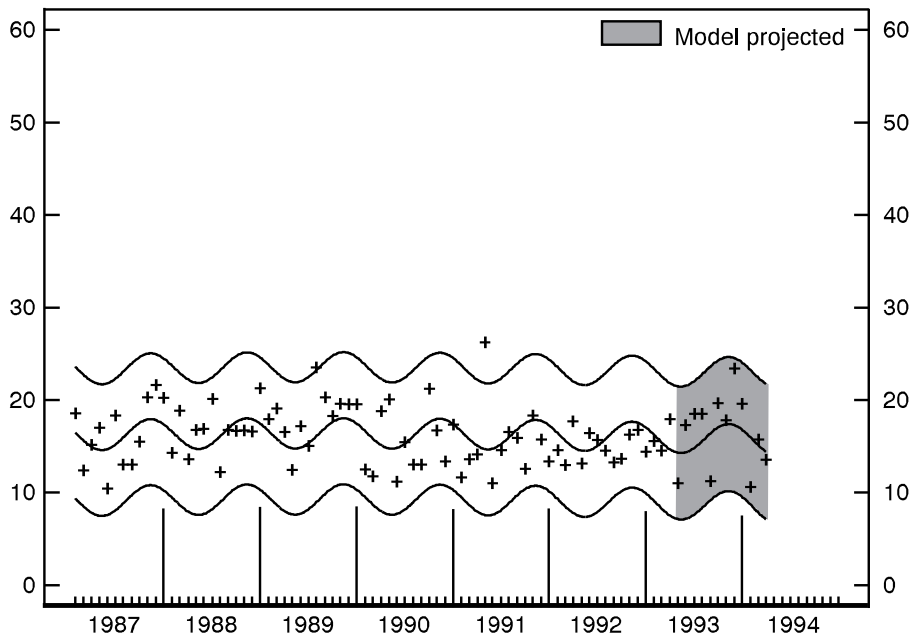
Provisional death rates per 100,000 males 15–24 years of age for Motor vehicle accidents by month: United States, 1987–94

- For the modeled period, provisional death rates have decreased since 1987.
- For the projection period, observed provisional monthly death rates, except for one, fell within 95-percent prediction intervals.
- Mortality shows a seasonal pattern with death rates higher in summer.

Mortality Surveillance System charts—Con.

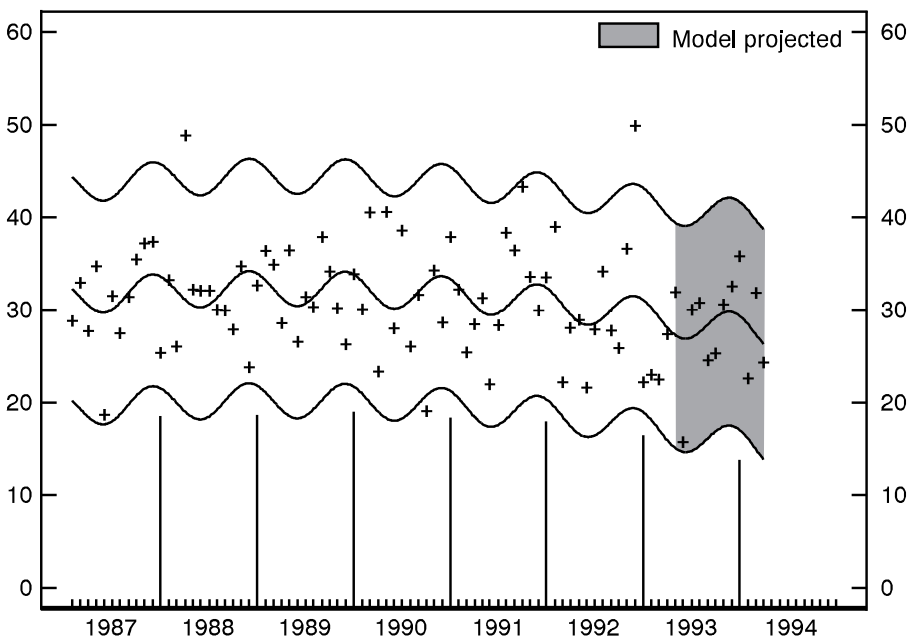
[Observed and fitted provisional monthly death rates and 95-percent prediction intervals. Model fitted using death rates for January 1985–March 1993; projected for April 1993–March 1994. See Technical notes]

Trends in mortality from Motor vehicle accidents are presented in the charts below. Reduction of mortality from Motor vehicle accidents is addressed in *Healthy People 2000* (objective 9.3) (1).



Provisional death rates per 100,000 females 65 years and over for Motor vehicle accidents by month: United States, 1987–94

- For the modeled period, provisional death rates have shown no discernible upward or downward trend.
- For the projection period, observed provisional monthly death rates fell within 95-percent prediction intervals.
- Mortality shows a seasonal pattern with death rates higher in fall.

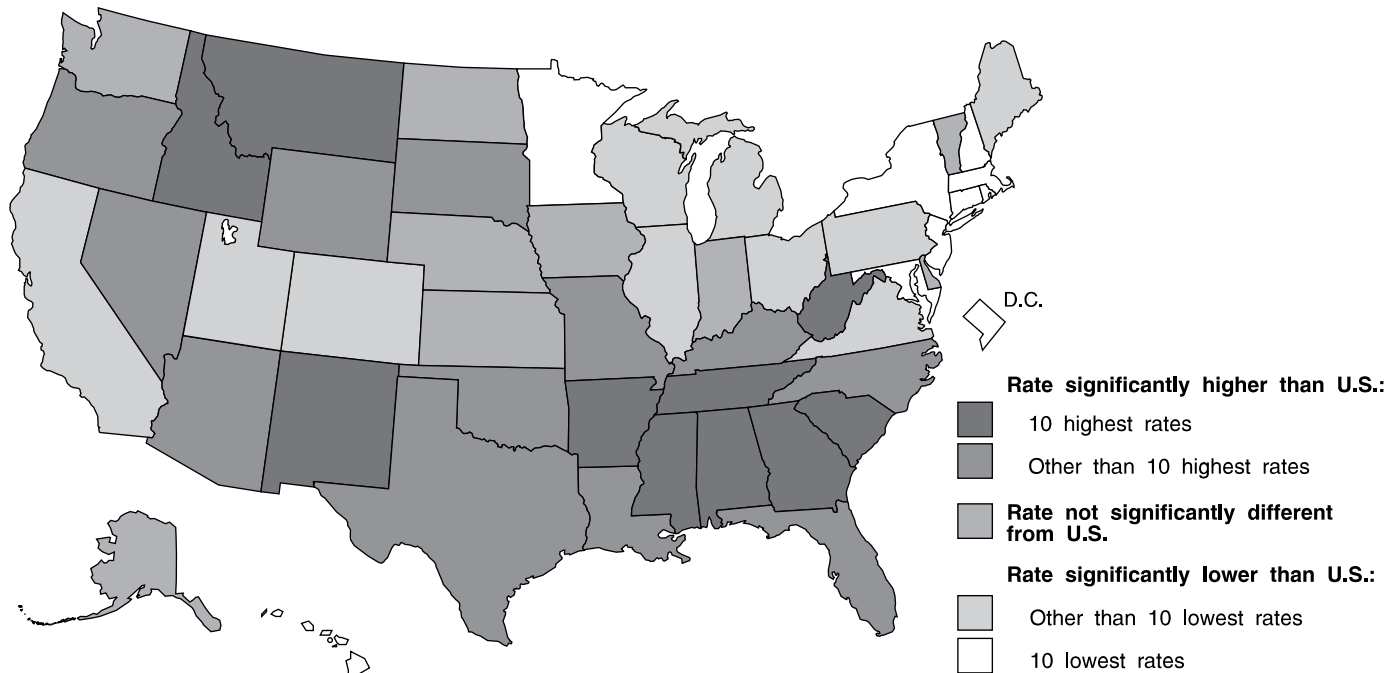


Provisional death rates per 100,000 males 65 years and over for Motor vehicle accidents by month: United States, 1987–94

- For the modeled period, provisional death rates have decreased since 1989.
- For the projection period, observed provisional monthly death rates fell within 95-percent prediction intervals.
- Mortality shows a seasonal pattern with death rates higher in fall.

Final 3-year total number of deaths and average annual age-adjusted death rates and 95-percent confidence limits for Motor vehicle accidents for males: United States and each State, 1989–91

[Data are final by State of residence]



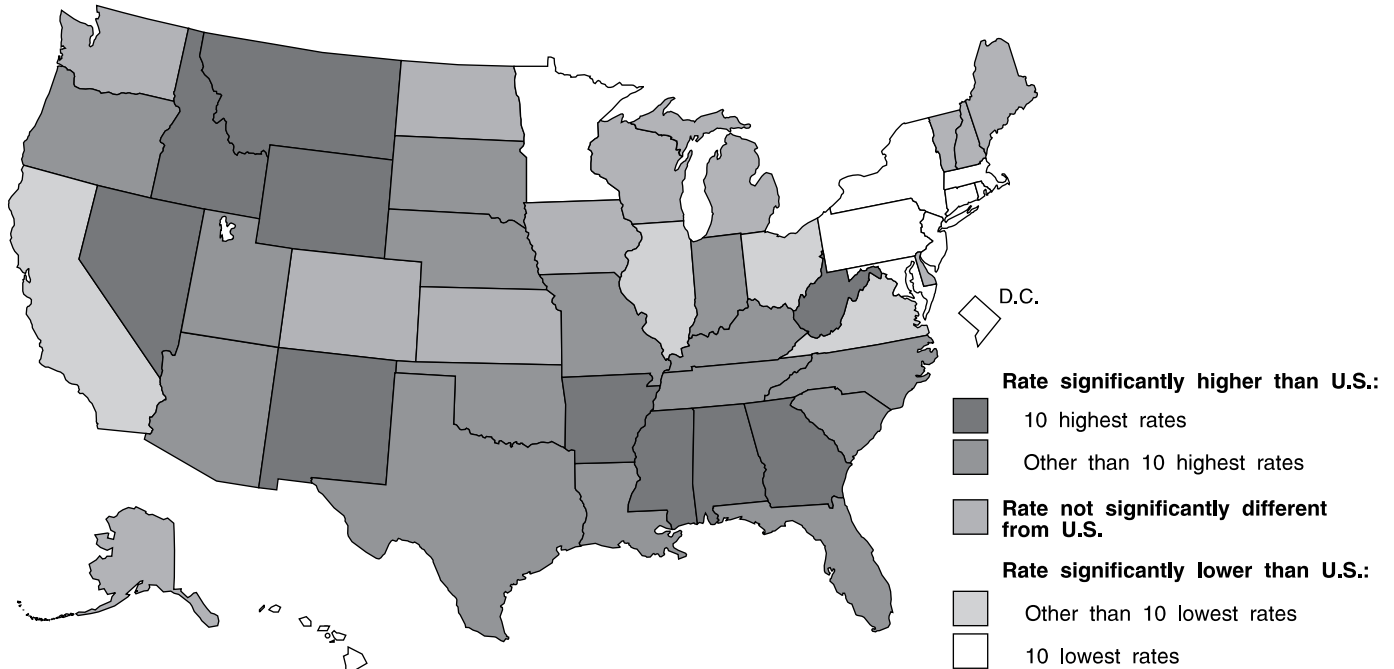
NOTE: "Significantly" refers to statistical significance at the 0.05 level.

Area	Deaths, 3-year total (final)	Age-adjusted rate (final)	95-percent confidence limits		Area	Deaths, 3-year total (final)	Age-adjusted rate (final)	95-percent confidence limits	
			Lower	Upper				Lower	Upper
United States	95,057	25.7	25.5	25.9	South Atlantic—Con.				
New England					West Virginia	938	††36.8	34.4	39.2
Maine	404	††22.5	20.2	24.8	North Carolina	3,125	††31.4	30.3	32.5
New Hampshire	341	††20.9	18.6	23.2	South Carolina	1,973	††38.2	36.5	39.9
Vermont	202	24.1	20.7	27.5	Georgia	3,222	††33.7	32.5	34.9
Massachusetts	1,385	††15.2	14.4	16.0	Florida	5,768	††30.3	29.5	31.1
Rhode Island	227	††15.1	13.1	17.1	East South Central				
Connecticut	841	††17.6	16.4	18.8	Kentucky	1,670	††31.0	29.5	32.5
Middle Atlantic					Tennessee	2,446	††34.1	32.7	35.5
New York	4,798	††17.8	17.3	18.3	Alabama	2,515	††42.5	40.8	44.2
New Jersey	1,811	††15.5	14.8	16.2	Mississippi	1,733	††47.1	44.9	49.3
Pennsylvania	3,845	††22.2	21.5	22.9	West South Central				
East North Central					Arkansas	1,318	††38.8	36.7	40.9
Ohio	3,503	††22.3	21.5	23.1	Louisiana	1,938	††32.3	30.9	33.7
Indiana	2,106	25.7	24.6	26.8	Oklahoma	1,389	††30.1	28.5	31.7
Illinois	3,724	††22.0	21.3	22.7	Texas	7,136	††28.4	27.7	29.1
Michigan	3,293	††24.0	23.2	24.8	Mountain				
Wisconsin	1,667	††23.1	22.0	24.2	Montana	379	††33.1	29.7	36.5
West North Central					Idaho	496	††33.4	30.4	36.4
Minnesota	1,307	††20.2	19.1	21.3	Wyoming	209	††32.3	27.9	36.7
Iowa	1,058	26.1	24.5	27.7	Colorado	1,170	††23.7	22.3	25.1
Missouri	2,192	††30.1	28.8	31.4	New Mexico	986	††45.2	42.3	48.1
North Dakota	226	23.7	20.5	26.9	Arizona	1,782	††32.8	31.2	34.4
South Dakota	316	††31.8	28.2	35.4	Utah	555	††22.5	20.6	24.4
Nebraska	586	25.6	23.5	27.7	Nevada	601	††32.5	29.8	35.2
Kansas	948	26.1	24.4	27.8	Pacific				
South Atlantic					Washington	1,769	24.6	23.4	25.8
Delaware	242	24.1	21.0	27.2	Oregon	1,141	††27.7	26.0	29.4
Maryland	1,492	††21.3	20.2	22.4	California	11,486	††24.9	24.4	25.4
District of Columbia	154	††16.8	14.1	19.5	Alaska	218	26.2	22.6	29.8
Virginia	2,085	††22.3	21.3	23.3	Hawaii	341	††19.5	17.4	21.6

NOTES: Data are final. Rates per 100,000 U.S. standard million population; see Technical notes. The symbols † and †† denote statistical significance of the difference between the U.S. and State rates at the 0.05 and 0.01 levels, respectively. For method of computation of rates, confidence limits, and tests of statistical significance, see Technical notes.

Final 3-year total number of deaths and average annual age-adjusted death rates and 95-percent confidence limits for Motor vehicle accident for females: United States and each State, 1989–91

[Data are final by State of residence]



NOTE: "Significantly" refers to statistical significance at the 0.05 level.

Area	Deaths, 3-year total (final)	Age-adjusted rate (final)	95-percent confidence limits		Area	Deaths, 3-year total (final)	Age-adjusted rate (final)	95-percent confidence limits	
			Lower	Upper				Lower	Upper
United States	42,868	10.7	10.6	10.8	South Atlantic—Con.				
New England					West Virginia	445	††15.9	14.3	17.5
Maine	188	9.4	8.0	10.8	North Carolina	1,338	††12.4	11.7	13.1
New Hampshire	168	9.3	7.8	10.8	South Carolina	816	††14.6	13.6	15.6
Vermont	88	9.8	7.6	12.0	Georgia	1,575	††15.2	14.4	16.0
Massachusetts	658	††6.2	5.7	6.7	Florida	2,622	††12.3	11.8	12.8
Rhode Island	89	††4.7	3.6	5.8	East South Central				
Connecticut	355	††6.3	5.6	7.0	Kentucky	820	††13.9	12.9	14.9
Middle Atlantic					Tennessee	1,065	††13.5	12.6	14.4
New York	2,269	††7.2	6.9	7.5	Alabama	1,087	††16.6	15.6	17.6
New Jersey	931	††7.1	6.6	7.6	Mississippi	739	††18.1	16.8	19.4
Pennsylvania	1,702	††8.4	8.0	8.8	West South Central				
East North Central					Arkansas	620	††16.6	15.2	18.0
Ohio	1,651	††9.4	8.9	9.9	Louisiana	819	††12.4	11.5	13.3
Indiana	1,063	††11.7	11.0	12.4	Oklahoma	680	††13.7	12.6	14.8
Illinois	1,720	††9.3	8.8	9.8	Texas	2,976	†11.2	10.8	11.6
Michigan	1,680	10.9	10.4	11.4	Mountain				
Wisconsin	820	10.3	9.6	11.0	Montana	179	††15.1	12.7	17.5
West North Central					Idaho	254	††17.0	14.8	19.2
Minnesota	627	††9.2	8.4	10.0	Wyoming	115	††18.1	14.7	21.5
Iowa	488	10.7	9.7	11.7	Colorado	558	11.1	10.1	12.1
Missouri	981	††11.9	11.1	12.7	New Mexico	390	††17.4	15.6	19.2
North Dakota	93	8.9	6.9	10.9	Arizona	786	††13.5	12.5	14.5
South Dakota	154	††14.4	12.0	16.8	Utah	318	†12.1	10.7	13.5
Nebraska	309	†12.5	11.0	14.0	Nevada	269	††15.3	13.4	17.2
Kansas	429	11.0	9.9	12.1	Pacific				
South Atlantic					Washington	770	10.2	9.4	11.0
Delaware	125	11.3	9.2	13.4	Oregon	559	††12.2	11.1	13.3
Maryland	655	††8.3	7.6	9.0	California	4,603	††9.9	9.6	10.2
District of Columbia	69	††6.3	4.7	7.9	Alaska	77	10.3	7.9	12.7
Virginia	954	††9.6	9.0	10.2	Hawaii	122	††7.3	6.0	8.6

NOTES: Data are final. Rates per 100,000 U.S. standard million population; see Technical notes. The symbols † and †† denote statistical significance of the difference between the U.S. and State rates at the 0.05 and 0.01 levels, respectively. For method of computation of rates, confidence limits, and tests of statistical significance, see Technical notes.

Table 1. Provisional number of live births, marriages, divorces, deaths, and infant deaths and rates, by month: United States, January 1993–September 1994

[Data are provisional and are subject to monthly reporting variation; see Technical notes]

Period	Live births				Marriages		Divorces		Deaths		Infant deaths	
	Number	Rate per 1,000 women aged 15–44 years			Number	Rate per 1,000 population	Number	Rate per 1,000 population	Number	Rate per 1,000 population	Number	Rate per 1,000 live births
		Rate per 1,000 population	Unadjusted	Seasonally adjusted ¹								
1993:												
January	325,000	14.9	64.7	68.1	103,000	4.8	92,000	4.2	198,000	9.1	2,800	8.4
February	308,000	15.6	68.0	69.6	154,000	7.9	87,000	4.4	187,000	9.5	2,700	8.7
March	360,000	16.5	71.7	73.1	157,000	7.3	113,000	5.2	217,000	10.0	3,000	8.7
April	328,000	15.5	67.5	69.1	174,000	8.3	98,000	4.6	196,000	9.3	2,800	8.6
May	335,000	15.3	66.8	67.7	221,000	10.1	103,000	4.7	185,000	8.5	2,900	8.8
June	321,000	15.2	66.1	65.1	252,000	11.9	101,000	4.8	178,000	8.4	2,700	8.4
July	357,000	16.3	71.2	68.4	235,000	10.7	100,000	4.6	184,000	8.4	2,700	7.7
August	367,000	16.7	73.0	69.0	254,000	11.6	100,000	4.6	180,000	8.2	2,700	7.8
September	356,000	16.8	73.3	68.6	218,000	10.3	101,000	4.8	174,000	8.2	2,600	7.5
October	344,000	15.6	68.4	68.6	218,000	9.9	102,000	4.7	188,000	8.5	2,800	8.0
November	316,000	14.8	64.9	66.9	162,000	7.6	94,000	4.4	180,000	8.5	2,600	8.1
December	323,000	14.7	64.3	65.9	185,000	8.4	96,000	4.4	202,000	9.2	2,800	8.6
1994:												
January	352,000	16.0	69.9	73.4	107,000	4.9	97,000	4.4	224,000	10.2	2,500	7.3
February	294,000	14.8	64.8	66.1	156,000	8.0	89,000	4.5	204,000	10.3	2,900	9.5
March	351,000	15.9	69.7	70.7	147,000	6.8	103,000	4.7	199,000	9.0	2,700	8.0
April	302,000	14.1	62.0	63.6	175,000	8.3	100,000	4.7	182,000	8.5	2,500	7.9
May	329,000	14.9	65.4	65.8	232,000	10.5	104,000	4.7	186,000	8.4	2,700	8.2
June	320,000	14.9	65.6	64.2	262,000	12.2	103,000	4.8	176,000	8.2	2,500	7.9
July	346,000	15.6	68.7	65.9	222,000	10.0	98,000	4.4	184,000	8.3	2,600	7.6
August	392,000	17.7	77.8	73.4	261,000	11.8	99,000	4.5	190,000	8.6	2,800	7.7
September	327,000	15.2	67.0	63.1	225,000	10.5	99,000	4.6	178,000	8.3	2,500	7.8

¹The method of seasonal adjustment, developed by the U.S. Bureau of the Census, is described in *The X-11 Variant of the Census Method II Seasonal Adjustment Program*, Technical Paper No. 15 (1967 revision).

NOTE: Figures include all revisions received from the States and, therefore, may differ from those previously published.

Symbols

- - - Data not available
- . . . Category not applicable
- Quantity zero
- 0.0 Quantity more than zero but less than 0.05
- * Figure does not meet standards of reliability or precision (see Technical notes)

Table 2. Provisional number of live births and deaths: each division and State, September 1993 and 1994, and cumulative figures, 1992-94

[Data are estimates by State of residence; see Technical notes]

Area	Live births					Deaths				
	September		January-September			September		January-September		
	1994	1993	1994	1993	1992	1994	1993	1994	1993	1992
New England	12,895	14,931	132,406	138,468	144,052	9,885	9,360	87,312	89,162	86,530
Maine	1,194	981	10,841	10,714	11,835	1,202	816	9,210	8,299	8,070
New Hampshire	808	1,185	10,579	11,592	11,694	600	768	6,602	6,714	6,112
Vermont	842	670	5,295	5,620	5,616	420	431	3,467	3,702	3,610
Massachusetts	5,493	7,279	63,320	67,661	68,352	4,415	4,236	39,911	42,189	40,855
Rhode Island	1,258	1,236	10,209	10,885	10,960	723	686	6,880	7,282	6,942
Connecticut	3,300	3,580	32,162	31,996	35,595	2,525	2,423	21,242	20,976	20,941
Middle Atlantic	43,396	45,641	411,237	421,763	421,731	28,065	27,275	275,674	277,768	267,830
New York	21,401	23,291	207,524	211,154	210,259	12,895	12,238	125,734	128,469	123,372
New Jersey	9,058	8,956	84,451	88,884	85,469	5,280	5,637	53,620	54,721	52,732
Pennsylvania	12,937	13,394	119,262	121,725	126,003	9,890	9,400	96,320	94,578	91,726
East North Central	54,574	55,205	486,628	492,963	495,020	30,531	29,900	296,738	288,166	277,471
Ohio	13,530	13,710	122,268	121,001	126,523	8,003	8,054	80,042	75,801	74,531
Indiana	6,914	6,383	61,611	62,928	63,370	4,122	3,956	39,961	38,505	37,407
Illinois	16,022	17,460	142,290	144,262	144,544	8,360	8,328	80,272	79,715	75,641
Michigan	12,556	12,029	107,747	111,614	106,855	6,568	6,040	62,730	61,405	59,164
Wisconsin	5,552	5,623	52,712	53,158	53,728	3,478	3,522	33,733	32,740	30,728
West North Central	20,612	24,764	190,073	196,157	198,925	13,275	13,319	127,503	128,490	120,335
Minnesota	5,333	5,502	49,194	48,708	49,965	2,859	2,940	27,174	26,956	25,880
Iowa	3,314	3,322	26,993	27,573	28,899	2,358	2,025	19,779	21,562	20,154
Missouri	6,297	6,485	56,543	57,993	58,473	3,936	4,122	42,114	41,727	37,221
North Dakota	719	739	6,515	6,647	6,769	474	437	4,429	4,318	4,286
South Dakota	843	1,082	8,070	8,303	8,681	490	658	5,102	5,122	5,296
Nebraska	1,938	1,771	17,322	17,136	17,767	1,239	1,214	10,994	11,175	10,988
Kansas	2,168	5,863	25,436	29,797	28,371	1,919	2,543	17,911	17,630	16,510
South Atlantic	59,040	60,882	497,218	506,067	509,462	33,450	31,877	323,788	316,608	302,830
Delaware	654	887	7,692	8,064	8,193	492	469	4,650	4,585	4,391
Maryland	6,349	7,318	53,138	57,112	56,841	3,306	3,137	29,373	31,637	27,771
District of Columbia	959	844	7,116	7,444	7,647	840	521	5,096	4,878	5,181
Virginia	8,401	8,525	71,052	72,818	74,252	4,082	3,847	40,498	38,711	36,886
West Virginia	1,587	1,744	16,775	16,754	17,129	1,561	1,527	15,415	15,070	15,354
North Carolina	8,740	8,877	77,976	75,034	77,349	4,972	4,614	48,811	47,017	44,411
South Carolina	5,384	5,712	39,714	41,734	42,281	2,515	2,513	23,650	23,565	22,910
Georgia	10,958	10,463	82,343	84,486	85,235	4,276	4,835	43,349	42,429	39,896
Florida	16,008	16,512	141,412	142,621	140,535	11,406	10,414	112,946	108,716	106,030
East South Central	21,067	19,056	173,294	173,523	175,136	11,564	10,921	117,710	116,080	110,967
Kentucky	4,886	4,946	39,278	39,717	40,868	2,899	2,812	28,574	27,823	26,622
Tennessee	7,118	5,101	56,816	54,317	55,185	3,451	3,267	36,765	36,695	35,658
Alabama	4,835	5,198	45,531	48,127	47,335	3,152	2,771	32,188	31,628	29,841
Mississippi	4,228	3,811	31,669	31,362	31,748	2,062	2,071	20,183	19,934	18,846
West South Central	38,302	44,294	356,446	368,942	366,674	17,658	17,355	182,103	178,374	171,777
Arkansas	2,942	2,775	25,960	25,965	26,345	1,739	1,916	20,105	19,909	18,918
Louisiana	6,089	5,328	51,264	53,033	55,701	2,991	3,099	31,357	31,310	29,407
Oklahoma	3,444	4,279	34,828	35,070	36,398	2,587	2,454	24,513	24,261	22,860
Texas ¹	25,827	31,912	244,394	254,874	248,230	10,341	9,886	106,128	102,894	100,592
Mountain	20,030	19,756	186,347	185,246	186,356	9,781	8,276	86,091	82,192	77,688
Montana	975	989	8,353	8,649	8,819	630	606	5,562	5,637	5,369
Idaho	1,374	1,553	13,245	13,280	13,306	711	692	6,366	6,226	5,970
Wyoming	519	539	4,862	4,938	5,244	317	307	2,629	2,617	2,499
Colorado	4,529	4,795	41,312	42,121	41,319	1,984	1,913	18,209	17,621	16,624
New Mexico	2,053	1,991	20,728	20,383	21,202	848	859	9,073	8,903	8,538
Arizona	5,818	5,789	51,263	53,245	51,139	3,090	2,311	27,191	25,752	23,754
Utah	3,494	3,055	29,414	27,879	28,445	879	755	7,904	7,481	7,342
Nevada	1,268	1,045	17,170	14,751	16,882	1,322	833	9,157	7,955	7,592
Pacific	55,980	62,180	554,567	542,636	555,918	23,312	25,776	226,734	221,518	219,756
Washington	7,085	7,074	59,326	52,554	50,511	3,360	3,584	29,283	31,621	28,557
Oregon	3,480	3,190	32,463	32,819	32,036	1,983	1,983	20,872	20,334	19,118
California ¹	43,081	49,285	438,597	434,884	449,767	17,213	19,454	169,316	162,449	165,250
Alaska	721	1,081	9,716	7,787	8,832	213	202	1,823	1,678	1,656
Hawaii	1,613	1,550	14,465	14,592	14,772	543	553	5,440	5,436	5,175

¹Figures include adjustments for varying length of reporting periods; see Technical notes.

NOTES: Figures include all revisions received from the States. Cumulative figures for the current year reflect revisions received for previous months, and figures for earlier years may differ from those previously published.

Table 3. Provisional number of marriages and divorces: each division and State, September 1993 and 1994, and cumulative figures, 1992-94

[By State of occurrence. Number of events reported; see Technical notes. Divorces include reported annulments]

Area	Marriages					Divorces				
	September		January-September			September		January-September		
	1994	1993	1994	1993	1992	1994	1993	1994	1993	1992
New England	14,436	10,751	78,433	66,502	71,552	3,618	3,998	29,071	32,227	35,250
Maine	1,410	1,297	8,189	8,048	8,495	532	721	3,986	4,429	4,506
New Hampshire	1,172	967	7,349	5,319	5,916	420	426	3,730	3,685	4,269
Vermont	998	966	4,109	4,337	4,279	288	341	1,983	2,125	2,247
Massachusetts	7,264	3,746	37,480	26,512	29,895	1,403	1,414	9,986	11,662	12,919
Rhode Island	821	831	5,152	5,308	5,531	284	300	2,440	2,622	2,709
Connecticut	2,771	2,944	16,154	16,978	17,436	691	796	6,946	7,704	8,600
Middle Atlantic	31,675	31,605	200,527	207,781	212,239	10,678	11,502	89,126	90,753	91,539
New York ¹	16,456	15,626	106,720	111,387	114,252	5,519	5,668	41,439	42,025	42,097
New Jersey	6,257	6,196	38,310	39,049	39,999	1,847	2,069	18,121	18,863	19,443
Pennsylvania	8,962	9,783	55,497	57,345	57,988	3,312	3,765	29,566	29,865	29,992
East North Central	38,496	37,464	254,459	255,951	261,057	² 12,479	² 13,247	² 111,390	² 113,140	² 114,018
Ohio	10,266	9,867	65,997	65,808	68,664	3,827	4,067	36,857	37,629	39,062
Indiana	5,057	4,451	37,593	37,927	37,701	---	---	---	---	---
Illinois	10,502	10,366	69,367	68,725	69,365	3,409	3,599	31,706	32,829	31,341
Michigan	8,003	8,833	53,424	53,056	54,189	3,618	4,033	29,911	29,351	29,829
Wisconsin	4,668	3,947	28,078	30,435	31,138	1,625	1,548	12,916	13,331	13,786
West North Central	17,102	15,325	113,269	113,546	113,092	6,032	6,151	56,821	58,563	57,632
Minnesota	4,340	3,985	25,511	25,036	25,059	1,462	1,317	11,992	12,657	11,763
Iowa	3,064	2,403	17,298	19,318	17,292	980	713	8,452	7,965	8,213
Missouri	4,512	4,534	34,189	33,871	34,342	2,006	2,112	20,254	20,064	19,877
North Dakota	505	512	3,863	3,911	3,829	189	187	1,653	1,670	1,769
South Dakota	777	813	6,042	6,061	6,027	244	257	2,199	2,190	2,138
Nebraska	1,254	1,401	10,003	9,942	10,188	651	531	4,972	4,754	4,922
Kansas	2,650	1,677	16,363	15,407	16,355	500	1,034	7,299	9,263	8,950
South Atlantic	41,895	40,515	334,333	334,474	330,219	19,384	19,403	174,835	176,811	179,276
Delaware	582	510	3,750	3,743	3,755	245	277	2,555	2,338	2,531
Maryland	4,987	4,537	31,635	31,897	31,265	1,495	1,447	12,987	12,785	13,359
District of Columbia	678	108	2,049	1,751	2,202	181	174	1,728	1,325	1,834
Virginia	6,786	6,327	52,479	52,354	52,093	2,688	2,451	22,149	21,983	21,770
West Virginia	1,060	1,547	8,070	10,309	9,655	704	811	6,693	7,008	7,297
North Carolina	4,866	4,439	37,130	35,925	37,136	3,800	2,827	28,018	26,582	27,425
South Carolina	5,439	5,265	39,976	40,613	41,074	1,165	1,645	11,394	11,825	11,984
Georgia	6,183	5,469	47,926	47,390	47,840	3,338	3,268	28,136	28,902	29,504
Florida	11,314	12,313	111,318	110,492	105,199	5,768	6,503	61,175	64,063	63,572
East South Central	16,419	15,353	143,431	138,853	137,092	8,706	8,376	74,467	72,066	74,166
Kentucky	4,193	4,328	36,090	34,982	36,865	2,168	2,098	17,207	16,654	18,200
Tennessee	7,204	5,750	59,561	55,379	53,718	2,715	2,731	25,150	24,942	24,734
Alabama	3,484	3,625	30,819	30,522	29,584	2,273	2,675	20,157	20,704	20,089
Mississippi	1,538	1,650	16,961	17,970	16,925	1,550	872	11,953	9,766	11,143
West South Central	24,200	23,502	231,472	220,664	222,342	² 10,849	² 10,500	² 106,686	² 106,230	² 109,081
Arkansas	3,364	2,994	29,218	28,069	27,632	1,583	1,336	13,529	13,149	13,536
Louisiana	3,916	3,370	31,742	27,855	26,933	---	---	---	---	---
Oklahoma	2,456	2,470	22,771	23,393	24,398	1,766	1,944	16,286	16,755	18,719
Texas ³	14,464	14,668	147,741	141,347	143,379	7,500	7,220	76,871	76,326	76,826
Mountain	25,913	23,929	208,881	195,696	187,253	² 6,075	² 6,314	² 57,005	² 58,073	² 59,033
Montana	718	720	5,639	5,752	5,791	314	387	3,074	3,300	3,231
Idaho	1,671	1,630	11,746	10,418	11,348	537	638	5,344	5,309	5,183
Wyoming	564	450	3,855	3,624	3,761	295	258	2,254	2,249	2,385
Colorado	3,575	3,477	27,336	26,803	26,672	1,388	1,564	14,486	14,297	14,570
New Mexico ^{4,5}	1,132	1,081	9,726	9,881	10,272	858	815	7,512	7,692	7,213
Arizona ¹	3,179	2,993	27,852	29,719	27,101	1,977	1,924	17,380	18,692	19,279
Utah	2,506	2,466	16,019	16,001	15,856	706	728	6,955	6,534	7,172
Nevada	12,568	11,112	106,708	93,498	86,452	---	---	---	---	---
Pacific	22,306	24,520	222,041	219,233	246,298	² 4,524	² 4,811	² 41,197	² 35,955	² 39,952
Washington	3,935	4,582	32,723	29,262	33,945	2,593	2,971	22,821	18,074	21,500
Oregon	3,000	2,750	19,761	18,572	17,737	1,250	1,250	12,344	12,220	11,716
California	13,300	15,013	151,581	153,891	176,544	---	---	---	---	---
Alaska	511	626	4,351	4,227	4,474	237	165	2,459	2,026	2,859
Hawaii	1,560	1,549	13,625	13,281	13,598	444	425	3,573	3,635	3,877

¹Figures for marriages are marriage licenses issued for some counties.

²Excludes figures for State(s) shown below as not available.

³Figures include adjustments for varying length of reporting periods; see Technical notes.

⁴Figures for marriages are marriage licenses issued.

⁵Figures for divorces include estimates for some counties.

NOTES: Figures include all revisions received from the States. Cumulative figures for the current year reflect revisions received for previous months, and figures for earlier years may differ from those previously published.

Table 4. Provisional number of deaths under 1 year and infant mortality rates: each division and State, 12 months ending with September 1993 and 1994

[Data are estimates by State of residence; see Technical notes. Infant mortality rates are deaths under 1 year per 1,000 live births in specified area]

Area	12 months ending with September			
	1994		1993	
	Number	Rate	Number	Rate
New England	1,758	15.8	1,191	6.5
Maine	98	6.5	94	6.5
New Hampshire	89	6.4	79	5.1
Vermont	39	5.6	46	6.0
Massachusetts	442	5.4	539	6.2
Rhode Island	90	6.6	133	9.0
Connecticut	---	---	300	6.9
Middle Atlantic	4,590	8.3	4,767	8.4
New York	2,354	8.6	2,395	8.4
New Jersey	977	8.2	965	7.8
Pennsylvania	1,259	8.0	1,407	8.7
East North Central	5,721	9.0	6,061	9.3
Ohio	1,461	9.2	1,410	8.6
Indiana	776	9.3	816	9.8
Illinois	1,719	9.1	1,960	10.2
Michigan	1,234	8.8	1,333	9.3
Wisconsin	531	7.7	542	7.8
West North Central	2,010	8.0	1,994	7.8
Minnesota	477	7.4	447	7.0
Iowa	241	6.6	242	6.6
Missouri	623	8.2	650	8.7
North Dakota	61	7.1	61	6.9
South Dakota	117	11.0	115	10.5
Nebraska	186	8.1	176	7.9
Kansas	305	9.1	303	7.8
South Atlantic	6,061	9.1	6,460	9.5
Delaware	79	7.8	97	9.0
Maryland	637	8.9	712	9.3
District of Columbia	189	20.0	154	15.6
Virginia	752	8.1	877	9.1
West Virginia	166	7.5	206	9.5
North Carolina	1,005	9.7	1,061	10.5
South Carolina	499	9.6	531	9.5
Georgia	1,132	10.3	1,160	10.5
Florida	1,602	8.3	1,662	8.6
East South Central	2,063	8.9	2,396	10.3
Kentucky	410	7.9	484	9.2
Tennessee	630	8.3	725	9.9
Alabama	623	10.3	646	10.1
Mississippi	400	9.4	541	12.6
West South Central	13,399	18.0	3,844	8.0
Arkansas	312	9.1	319	9.2
Louisiana	680	10.0	682	9.9
Oklahoma	---	---	431	9.3
Texas ²	2,407	7.5	2,412	7.3
Mountain	1,797	7.3	1,843	7.5
Montana	95	8.5	86	7.6
Idaho	129	7.5	147	8.4
Wyoming	41	6.2	60	9.2
Colorado	357	6.6	428	7.7
New Mexico	267	9.5	232	8.4
Arizona	551	8.0	524	7.6
Utah	211	5.6	238	6.5
Nevada	146	6.2	128	6.3
Pacific	4,851	6.5	4,928	6.6
Washington	451	5.8	489	6.0
Oregon	286	6.8	296	7.0
California ²	3,905	6.6	3,934	6.7
Alaska	77	6.2	80	7.5
Hawaii	132	6.8	129	6.5

¹Excludes figures for State shown below as not available.

²Figures include adjustments for varying length of reporting periods; see Technical notes.

NOTES: Figures include all revisions received from the States. Figures for the current year reflect revisions received for previous months, and figures for earlier years may differ from those previously published.

Table 5. Provisional number of deaths and death rates, by age, race, and sex, and age-adjusted death rates by race and sex: United States, August 1993 and 1994, cumulative figures 1993 and 1994, and 12 months ending with August 1993 and 1994

[Data are provisional, estimated from a 10-percent sample of deaths. Age-specific rates on an annual basis per 100,000 population in specified group; age-adjusted rates per 100,000 U.S. standard million population; see Technical notes. Due to rounding of estimates, figures may not add to totals. For method of computation and information on standard errors of the estimates, see Technical notes]

Age, race, and sex	August				January– August				12 months ending with August			
	1994		1993		1994		1993		1994		1993	
	Number	Rate	Number	Rate	Number	Rate	Number	Rate	Number	Rate	Number	Rate
All races, both sexes¹												
All ages	190,000	855.8	180,000	820.6	1,546,000	893.0	1,524,000	889.9	2,290,000	881.5	2,235,000	869.8
Under 1 year	} 4,330	88.7	4,180	86.6	21,300	² 809.6	22,500	² 854.3	32,100	² 809.4	33,700	² 851.2
1–4 years					4,910	46.4	4,920	47.0	7,010	44.2	7,030	44.8
5–14 years					5,850	23.5	6,080	24.7	8,520	22.8	8,610	23.4
15–24 years					3,510	114.8	3,530	115.5	23,770	99.2	23,530	98.1
25–34 years	5,370	152.8	5,230	147.0	38,860	140.7	39,170	140.1	59,620	143.5	58,170	138.3
35–44 years	8,850	249.2	8,070	232.4	66,890	241.8	63,900	236.2	99,540	240.3	95,310	235.3
45–54 years	11,310	443.8	11,060	452.5	90,490	458.1	88,480	467.2	135,490	458.8	129,410	457.0
55–64 years	20,190	1,130.1	20,020	1,126.1	161,660	1,155.8	163,980	1,177.7	239,990	1,143.0	242,610	1,160.4
65–74 years	39,980	2,511.9	38,800	2,446.9	329,710	2,645.8	331,150	2,670.5	488,920	2,613.4	486,550	2,614.0
75–84 years	52,660	5,629.5	50,040	5,450.8	436,410	5,989.9	430,090	6,015.9	644,020	5,899.8	628,940	5,869.7
85 years and over	43,370	14,648.5	38,900	13,479.0	366,530	15,954.3	349,970	15,648.4	539,010	15,678.0	508,680	15,184.5
Not stated	60	...	90	...	400	...	540	...	740	...	850	...
Age-adjusted rate ³	503.7	...	491.0	...	516.6	...	520.1	...	511.6	...	510.0
All races, male¹												
All ages	97,650	902.4	93,370	872.2	789,850	934.2	782,740	936.0	1,173,280	925.1	1,148,400	915.6
Under 1 year	} 2,520	100.9	2,580	104.4	11,970	² 892.3	12,860	² 954.4	18,440	² 911.1	18,790	² 927.4
1–4 years					2,940	54.4	2,760	51.7	4,160	51.3	3,970	49.4
5–14 years					3,500	27.4	3,680	29.2	4,990	26.1	5,260	27.9
15–24 years					2,680	171.7	2,610	167.1	18,310	149.6	17,740	144.6
25–34 years	4,150	236.1	3,830	215.1	28,360	205.4	28,780	205.7	43,920	211.3	42,600	202.4
35–44 years	5,980	339.4	5,510	320.0	46,780	340.9	44,000	328.2	69,430	337.9	65,840	327.9
45–54 years	7,180	576.4	6,900	577.5	56,990	590.0	56,130	606.3	85,340	591.2	81,920	591.8
55–64 years	12,290	1,447.8	11,930	1,414.6	98,950	1,489.1	99,360	1,504.7	146,500	1,468.7	146,440	1,477.4
65–74 years	22,660	3,214.5	22,150	3,163.9	189,570	3,438.1	189,410	3,462.1	281,090	3,397.3	278,240	3,389.5
75–84 years	25,830	7,181.3	25,110	7,163.8	213,490	7,636.3	213,680	7,841.0	316,340	7,557.1	311,850	7,641.5
85 years and over	14,300	17,076.2	12,670	15,703.1	118,760	18,319.3	113,940	18,218.8	175,670	18,110.3	166,650	17,804.5
Not stated	40	...	80	...	240	...	380	...	410	...	580	...
Age-adjusted rate ³	651.7	...	636.3	...	668.3	...	674.3	...	662.7	...	660.6
All races, female¹												
All ages	91,990	811.3	86,550	771.4	756,870	854.2	741,560	845.8	1,116,990	840.3	1,086,550	826.2
Under 1 year	} 1,810	76.0	1,590	67.5	9,270	² 721.7	9,610	² 747.0	13,600	² 702.1	14,910	² 771.3
1–4 years					1,970	38.2	2,160	42.6	2,850	36.8	3,060	40.0
5–14 years					2,350	19.4	2,400	19.9	3,520	19.3	3,360	18.7
15–24 years					830	55.5	920	61.6	5,460	46.7	5,800	49.4
25–34 years	1,220	69.4	1,400	78.8	10,500	76.0	10,390	74.4	15,700	75.6	15,570	74.1
35–44 years	2,870	160.4	2,570	146.8	20,110	144.2	19,900	146.0	30,110	144.2	29,470	144.3
45–54 years	4,130	317.0	4,170	333.7	33,500	331.9	32,350	334.3	50,150	332.2	47,500	328.1
55–64 years	7,900	842.6	8,090	865.8	62,710	854.3	64,620	882.8	93,490	848.2	96,170	874.7
65–74 years	17,320	1,953.3	16,650	1,880.1	140,150	2,017.2	141,730	2,045.2	207,830	1,991.9	208,310	2,002.2
75–84 years	26,830	4,660.7	24,920	4,391.1	222,910	4,965.0	216,410	4,891.4	327,680	4,868.9	317,090	4,779.8
85 years and over	29,070	13,685.6	26,230	12,636.5	247,770	15,018.5	236,030	14,653.1	363,340	14,710.1	342,040	14,169.0
Not stated	20	...	10	...	160	...	160	...	330	...	270	...
Age-adjusted rate ³	379.4	...	370.6	...	390.6	...	393.5	...	386.1	...	386.6
White												
All ages	161,510	877.6	153,030	838.5	1,330,260	924.4	1,310,560	918.4	1,969,710	912.1	1,920,920	897.1
Under 1 year	} 2,830	73.2	2,790	72.8	13,750	² 667.0	14,730	² 712.4	20,650	² 663.6	21,940	² 705.7
1–4 years					3,210	38.2	3,460	41.7	4,660	37.2	5,000	40.3
5–14 years					4,160	20.9	4,520	23.0	6,130	20.6	6,380	21.7
15–24 years					2,560	104.9	2,430	99.2	16,930	88.5	16,340	85.0
25–34 years	3,630	126.2	3,670	125.7	27,190	120.2	28,100	122.3	42,320	124.3	41,340	119.6
35–44 years	6,500	219.7	5,660	195.1	47,380	205.4	45,340	200.5	70,660	204.6	68,240	201.4
45–54 years	8,420	385.7	8,480	404.0	69,730	412.0	67,850	416.8	104,560	412.9	99,600	409.2
55–64 years	16,550	1,070.1	16,100	1,043.3	132,230	1,091.2	133,830	1,106.3	196,380	1,079.2	198,100	1,090.3
65–74 years	34,050	2,409.0	33,570	2,379.1	285,210	2,575.6	286,760	2,596.5	422,410	2,540.2	421,450	2,541.9
75–84 years	47,320	5,584.4	44,770	5,380.5	392,690	5,948.7	387,020	5,971.2	580,130	5,865.2	565,890	5,825.5
85 years and over	39,610	14,656.7	35,490	13,479.5	337,530	16,090.2	322,280	15,791.1	496,360	15,817.7	467,870	15,304.9
Not stated	50	...	60	...	260	...	350	...	500	...	570	...
Age-adjusted rate ³	472.6	...	459.5	...	488.8	...	491.5	...	484.1	...	482.0

See footnotes at end of table.

Table 5. Provisional number of deaths and death rates, by age, race, and sex, and age-adjusted death rates by race and sex: United States, August 1993 and 1994, cumulative figures 1993 and 1994, and 12 months ending with August 1993 and 1994—Con.

[Data are provisional, estimated from a 10-percent sample of deaths. Age-specific rates on an annual basis per 100,000 population in specified group; age-adjusted rates per 100,000 U.S. standard million population; see Technical notes. Due to rounding of estimates, figures may not add to totals. For method of computation and information on standard errors of the estimates, see Technical notes]

Age, race, and sex	August				January– August				12 months ending with August			
	1994		1993		1994		1993		1994		1993	
	Number	Rate	Number	Rate	Number	Rate	Number	Rate	Number	Rate	Number	Rate
White male												
All ages	82,210	910.8	78,690	879.3	670,680	950.3	666,360	952.5	996,650	941.1	977,880	931.6
Under 1 year					7,640	² 724.2	8,290	² 782.1	11,810	² 741.4	12,250	² 768.0
1–4 years	1,610	81.1	1,740	88.5	1,930	45.3	1,980	46.3	2,780	43.2	2,900	45.5
5–14 years					2,450	23.9	2,770	27.5	3,630	23.8	3,910	26.0
15–24 years	1,920	153.3	1,720	136.8	12,860	130.9	12,160	123.1	18,690	126.6	18,150	122.2
25–34 years	2,920	201.0	2,720	184.3	20,160	176.4	21,050	181.3	31,480	183.0	30,780	176.2
35–44 years	4,420	297.9	3,920	269.5	33,490	289.5	31,940	281.9	49,970	288.6	48,330	284.7
45–54 years	5,360	497.3	5,350	516.4	44,340	530.6	43,400	540.2	66,600	532.8	63,520	528.8
55–64 years	10,210	1,374.2	9,620	1,300.0	81,770	1,404.8	81,960	1,413.7	120,970	1,384.3	121,000	1,389.7
65–74 years	19,340	3,068.9	19,500	3,110.2	164,530	3,336.0	166,020	3,386.0	244,310	3,300.6	243,530	3,309.7
75–84 years	23,450	7,179.0	22,540	7,080.8	192,980	7,598.3	192,930	7,796.6	285,920	7,520.3	281,620	7,599.0
85 years and over	12,960	17,145.3	11,530	15,804.0	108,340	18,488.4	103,630	18,337.2	160,200	18,287.7	151,510	17,909.0
Not stated	30	...	50	...	170	...	230	...	290	...	360	...
Age-adjusted rate ³	610.3	...	595.2	...	630.3	...	637.5	...	625.6	...	624.8
White female												
All ages	79,300	845.7	74,330	799.1	659,580	899.4	644,200	885.6	973,050	884.2	943,050	864.0
Under 1 year					6,100	² 607.9	6,440	² 641.0	8,840	² 582.0	9,690	² 640.0
1–4 years	1,220	64.8	1,050	56.3	1,270	30.9	1,470	36.2	1,880	30.7	2,100	34.7
5–14 years					1,710	17.6	1,750	18.4	2,500	17.3	2,480	17.4
15–24 years	650	54.7	710	59.5	4,070	43.6	4,180	44.5	6,250	44.6	6,380	45.3
25–34 years	720	50.6	950	65.8	7,030	63.0	7,050	62.0	10,840	64.3	10,560	61.8
35–44 years	2,080	141.0	1,740	120.2	13,880	120.7	13,400	118.7	20,690	120.1	19,910	117.8
45–54 years	3,060	276.9	3,130	294.5	25,400	296.2	24,450	296.7	37,960	296.1	36,080	292.7
55–64 years	6,340	789.0	6,480	806.9	50,460	801.3	51,870	823.7	75,410	797.3	77,100	814.8
65–74 years	14,700	1,876.8	14,070	1,794.4	120,670	1,964.9	120,740	1,965.9	178,100	1,930.2	177,910	1,929.2
75–84 years	23,860	4,582.2	22,240	4,328.9	199,710	4,916.8	194,080	4,844.5	294,210	4,831.8	284,270	4,731.5
85 years and over	26,650	13,690.3	23,960	12,588.6	229,190	15,161.8	218,650	14,815.5	336,160	14,861.2	316,350	14,308.0
Not stated	20	...	10	...	90	...	120	...	210	...	210	...
Age-adjusted rate ³	357.0	...	347.2	...	370.7	...	371.1	...	366.3	...	364.5
Black												
All ages	24,580	884.4	23,890	873.3	191,840	884.7	190,370	892.0	283,530	872.1	279,020	872.2
Under 1 year					6,630	² 1,567.6	7,150	² 1,673.5	10,180	² 1,608.2	10,680	² 1,661.0
1–4 years	1,280	168.3	1,220	162.5	1,420	84.4	1,280	76.5	1,930	76.8	1,720	69.2
5–14 years					1,390	35.9	1,350	35.9	1,930	33.5	1,960	34.8
15–24 years	810	176.5	930	204.9	5,990	167.0	6,290	176.6	9,150	170.0	9,170	171.9
25–34 years	1,510	326.3	1,340	287.7	10,300	283.5	9,860	270.0	15,330	280.7	15,050	274.4
35–44 years	2,160	503.4	2,170	523.0	18,110	543.2	16,970	526.0	26,600	532.9	24,580	509.1
45–54 years	2,510	955.8	2,320	929.4	18,450	908.5	18,600	962.2	27,540	907.1	26,830	929.3
55–64 years	3,220	1,811.4	3,540	2,017.4	25,830	1,861.6	26,800	1,953.5	38,280	1,837.7	39,540	1,922.2
65–74 years	5,130	3,761.0	4,660	3,450.8	39,590	3,713.7	39,420	3,744.6	59,010	3,690.4	57,690	3,653.6
75–84 years	4,690	6,677.3	4,630	6,688.9	38,560	7,043.0	38,130	7,064.6	55,850	6,811.0	55,820	6,891.4
85 years and over	3,260	15,415.2	3,050	14,598.1	25,420	15,557.6	24,310	14,963.6	37,500	15,368.9	35,710	14,635.2
Not stated	10	...	30	...	130	...	190	...	230	...	270	...
Age-adjusted rate ³	791.6	...	787.1	...	788.8	...	801.0	...	779.5	...	783.0
Black male												
All ages	13,370	1,013.9	13,020	1,003.9	104,960	1,020.2	103,290	1,020.9	155,180	1,006.2	150,850	994.7
Under 1 year					3,920	² 1,828.9	4,180	² 1,931.9	6,050	² 1,884.7	5,950	² 1,830.8
1–4 years	780	202.3	730	192.0	790	94.5	690	82.1	1,090	85.6	920	73.1
5–14 years					840	43.6	800	40.9	1,060	36.3	1,180	41.3
15–24 years	650	283.5	770	339.7	4,780	267.3	4,920	277.1	7,360	273.8	7,160	268.7
25–34 years	1,060	483.9	950	431.2	7,250	421.6	6,860	397.8	11,030	426.9	10,510	405.3
35–44 years	1,420	709.0	1,450	750.4	12,330	792.3	11,120	740.4	17,950	771.0	16,020	713.0
45–54 years	1,600	1,343.7	1,420	1,255.2	11,230	1,218.5	11,580	1,319.8	16,680	1,211.3	16,640	1,271.2
55–64 years	1,820	2,349.7	2,090	2,737.3	15,190	2,510.5	15,590	2,611.9	22,500	2,478.0	22,610	2,523.4
65–74 years	2,900	5,126.9	2,380	4,258.7	22,200	5,022.5	20,940	4,806.8	32,480	4,898.9	30,960	4,741.2
75–84 years	2,040	8,060.2	2,200	8,840.7	17,690	8,986.3	17,780	9,171.6	25,950	8,796.6	26,010	8,938.1
85 years and over	1,090	17,580.6	990	16,189.5	8,670	18,278.8	8,670	18,115.5	12,900	18,169.0	12,680	17,611.1
Not stated	10	...	30	...	70	...	150	...	120	...	210	...
Age-adjusted rate ³	1,057.7	...	1,050.6	...	1,063.3	...	1,066.7	...	1,048.4	...	1,039.0

See footnotes at end of table.

Table 5. Provisional number of deaths and death rates, by age, race, and sex, and age-adjusted death rates by race and sex: United States, August 1993 and 1994, cumulative figures 1993 and 1994, and 12 months ending with August 1993 and 1994—Con.

[Data are provisional, estimated from a 10-percent sample of deaths. Age-specific rates on an annual basis per 100,000 population in specified group; age-adjusted rates per 100,000 U.S. standard million population; see Technical notes. Due to rounding of estimates, figures may not add to totals. For method of computation and information on standard errors of the estimates, see Technical notes]

Age, race, and sex	August				January– August				12 months ending with August			
	1994		1993		1994		1993		1994		1993	
	Number	Rate	Number	Rate	Number	Rate	Number	Rate	Number	Rate	Number	Rate
Black female												
All ages	11,220	768.2	10,860	754.9	86,880	762.3	87,070	775.7	128,360	751.2	128,170	761.7
Under 1 year	} 500	133.4	490	132.3	2,710	² 1,299.0	2,970	² 1,408.8	4,130	² 1,323.7	4,730	² 1,487.4
1–4 years					630	77.6	590	71.9	840	67.8	800	65.1
5–14 years					550	29.0	560	30.2	870	30.7	780	28.1
15–24 years					160	69.7	160	70.4	1,210	67.4	1,370	76.4
25–34 years	450	184.6	390	158.9	3,050	159.3	3,000	155.8	4,300	149.5	4,540	157.0
35–44 years	740	323.4	720	324.8	5,780	325.4	5,850	339.3	8,650	324.7	8,560	331.7
45–54 years	910	634.0	900	659.4	7,220	650.5	7,020	664.6	10,860	654.6	10,190	645.8
55–64 years	1,400	1,395.7	1,450	1,462.9	10,650	1,360.2	11,210	1,446.8	15,780	1,343.0	16,930	1,458.2
65–74 years	2,230	2,793.2	2,270	2,867.7	17,390	2,788.2	18,480	2,993.7	26,530	2,834.4	26,730	2,886.6
75–84 years	2,650	5,898.2	2,430	5,481.1	20,870	5,953.7	20,350	5,883.0	29,890	5,693.3	29,810	5,743.7
85 years and over	2,170	14,517.0	2,060	13,939.6	16,750	14,463.3	15,640	13,639.2	24,600	14,219.7	23,040	13,395.3
Not stated	–	...	–	...	60	...	40	...	110	...	60	...
Age-adjusted rate ³	582.3	...	579.5	...	577.2	...	596.8	...	571.5	...	586.5

¹Includes races other than white and black.

²Death rates under 1 year (based on population estimates) differ from infant mortality rates (based on live births); see table 9 for infant mortality rates.

³For method of computation, see Technical notes.

NOTES: Figures include all revisions received from the States. Cumulative and 12-month figures for the current year reflect revisions received for previous months, and figures for earlier years may differ from those previously published.

Table 6. Provisional number of deaths and death rates for 72 selected causes and Human immunodeficiency virus infection: United States, August 1993 and 1994, cumulative figures 1993 and 1994, and 12 months ending with August 1993 and 1994

[Data are provisional, estimated from a 10-percent sample of deaths. Rates on an annual basis per 100,000 estimated population. Due to rounding of estimates, figures may not add to totals. For method of computation and information on standard errors of the estimates, see Technical notes. For explanation of asterisk preceding cause-of-death codes, see Technical notes]

Cause of death (Ninth Revision, International Classification of Diseases, 1975)	August				January–August				12 months ending with August			
	1994		1993		1994		1993		1994		1993	
	Number	Rate	Number	Rate	Number	Rate	Number	Rate	Number	Rate	Number	Rate
All causes	190,000	855.8	180,000	820.6	1,546,000	893.0	1,524,000	889.9	2,290,000	881.5	2,235,000	869.8
Shigellosis and amebiasis004,006	–	*	–	*	10	*	–	*	10	*	–	*
Certain other intestinal infections.007–009	80	*	20	*	560	0.3	390	0.2	750	0.3	610	0.2
Tuberculosis010–018	130	0.6	120	0.5	1,010	0.6	1,150	0.7	1,390	0.5	1,580	0.6
Tuberculosis of respiratory system010–012	90	*	90	*	780	0.4	930	0.5	1,080	0.4	1,270	0.5
Other tuberculosis013–018	40	*	30	*	230	0.1	220	0.1	310	0.1	310	0.1
Whooping cough.033	–	*	–	*	20	*	10	*	20	*	20	*
Streptococcal sore throat, scarlatina, and erysipelas.034–035	–	*	–	*	–	*	–	*	–	*	–	*
Meningococcal infection036	10	*	20	*	200	0.1	200	0.1	280	0.1	300	0.1
Septicemia038	1,490	6.7	1,580	7.2	13,610	7.9	13,630	8.0	20,360	7.8	19,820	7.7
Acute poliomyelitis.045	–	*	–	*	–	*	–	*	–	*	–	*
Measles055	–	*	–	*	10	*	–	*	10	*	–	*
Viral hepatitis.070	250	1.1	230	1.0	1,760	1.0	1,670	1.0	2,610	1.0	2,450	1.0
Syphilis090–097	–	*	10	*	70	*	50	*	120	0.0	60	*
All other infectious and parasitic diseases ¹001–003,005,020–032,037,039–041,*042–*044,046–054,056–066,071–088,098–139	4,180	18.9	3,100	14.1	30,510	17.6	28,290	16.5	46,370	17.9	41,960	16.3
Malignant neoplasms, including neoplasms of lymphatic and hematopoietic tissues140–208	47,800	215.7	46,230	210.8	359,140	207.4	353,310	206.2	537,100	206.8	526,960	205.1
Malignant neoplasms of lip, oral cavity, and pharynx140–149	630	2.8	580	2.6	5,170	3.0	5,210	3.0	8,120	3.1	8,020	3.1
Malignant neoplasms of digestive organs and peritoneum150–159	11,500	51.9	11,090	50.6	84,410	48.7	81,520	47.6	126,360	48.6	121,550	47.3
Malignant neoplasms of respiratory and intrathoracic organs160–165	13,830	62.4	12,990	59.2	103,110	59.5	102,530	59.9	154,510	59.5	153,660	59.8
Malignant neoplasm of breast174–175	3,830	17.3	3,960	18.0	29,370	16.9	30,090	17.6	43,990	16.9	44,270	17.2
Malignant neoplasms of genital organs179–187	5,640	25.4	5,270	24.0	41,230	23.8	40,650	23.7	61,310	23.6	60,220	23.4
Malignant neoplasms of urinary organs188–189	1,850	8.3	1,790	8.2	14,800	8.5	14,550	8.5	22,370	8.6	21,770	8.5
Malignant neoplasms of all other and unspecified sites.170–173,190–199	5,690	25.7	5,960	27.2	44,880	25.9	44,060	25.7	67,200	25.9	65,580	25.5
Leukemia.204–208	1,880	8.5	1,720	7.8	13,390	7.7	12,780	7.5	19,550	7.5	19,270	7.5
Other malignant neoplasms of lymphatic and hematopoietic tissues.200–203	2,950	13.3	2,870	13.1	22,780	13.2	21,930	12.8	33,680	13.0	32,620	12.7
Benign neoplasms, carcinoma in situ, and neoplasms of uncertain behavior and of unspecified nature210–239	680	3.1	750	3.4	5,360	3.1	5,290	3.1	8,120	3.1	7,740	3.0
Diabetes mellitus250	4,480	20.2	4,510	20.6	36,980	21.4	37,070	21.6	54,930	21.1	52,900	20.6
Nutritional deficiencies260–269	270	1.2	360	1.6	2,150	1.2	2,230	1.3	3,250	1.3	3,360	1.3
Anemias280–285	390	1.8	350	1.6	2,750	1.6	3,010	1.7	4,270	1.6	4,340	1.7
Meningitis320–322	60	*	90	*	630	0.4	570	0.3	880	0.3	780	0.3
Major cardiovascular diseases390–448	75,510	340.7	70,960	323.6	639,720	369.5	635,930	371.3	944,280	363.5	932,740	363.0
Diseases of heart390–398,402,404–429	58,870	265.7	55,660	253.9	498,340	287.8	498,530	291.0	736,790	283.7	731,460	284.7
Rheumatic fever and rheumatic heart disease.390–398	430	1.9	420	1.9	3,860	2.2	3,780	2.2	5,660	2.2	5,730	2.2
Hypertensive heart disease402	2,080	9.4	1,720	7.8	16,290	9.4	16,350	9.5	23,200	8.9	24,150	9.4
Hypertensive heart and renal disease404	170	0.8	140	0.6	1,360	0.8	1,440	0.8	2,200	0.8	2,210	0.9
Ischemic heart disease410–414	38,570	174.0	36,090	164.6	329,250	190.2	328,100	191.5	486,680	187.4	483,110	188.0
Acute myocardial infarction410	17,840	80.5	16,880	77.0	153,810	88.8	152,460	89.0	228,030	87.8	226,550	88.2
Other acute and subacute forms of ischemic heart disease411	210	0.9	280	1.3	1,760	1.0	2,030	1.2	2,700	1.0	2,930	1.1
Angina pectoris413	90	*	30	*	610	0.3	440	0.3	900	0.3	810	0.3
Old myocardial infarction and other forms of chronic ischemic heart disease412,414	20,420	92.1	18,900	86.2	173,080	100.0	173,170	101.1	255,040	98.2	252,820	98.4
Other diseases of endocardium424	1,280	5.8	980	4.5	9,780	5.6	9,390	5.5	14,880	5.7	14,270	5.6
All other forms of heart disease415–423,425–429	16,340	73.7	16,310	74.4	137,780	79.6	139,480	81.4	204,160	78.6	201,980	78.6
Hypertension with or without renal disease401,403	830	3.7	720	3.3	7,280	4.2	7,020	4.1	10,800	4.2	10,160	4.0
Cerebrovascular diseases430–438	12,220	55.1	11,270	51.4	104,070	60.1	100,790	58.8	152,770	58.8	148,120	57.6
Intracerebral and other intracranial hemorrhage.431–432	1,620	7.3	1,440	6.6	13,800	8.0	14,530	8.5	20,540	7.9	21,590	8.4
Cerebral thrombosis and unspecified occlusion of cerebral arteries.434,0,434.9	1,120	5.1	1,070	4.9	10,080	5.8	10,610	6.2	15,280	5.9	15,770	6.1

See footnotes at end of table.

Table 6. Provisional number of deaths and death rates for 72 selected causes and Human immunodeficiency virus infection: United States, August 1993 and 1994, cumulative figures 1993 and 1994, and 12 months ending with August 1993 and 1994—Con.

[Data are provisional, estimated from a 10-percent sample of deaths. Rates on an annual basis per 100,000 estimated population. Due to rounding of estimates, figures may not add to totals. For method of computation and information on standard errors of the estimates, see Technical notes. For explanation of asterisk preceding cause-of-death codes, see Technical notes.]

Cause of death (Ninth Revision, International Classification of Diseases, 1975)	August		January–August				12 months ending with August						
	1994		1993		1994		1993		1994		1993		
	Number	Rate	Number	Rate	Number	Rate	Number	Rate	Number	Rate	Number	Rate	
Cerebral embolism	434.1	90	*	10	*	670	0.4	320	0.2	840	0.3	540	0.2
All other and late effects of cerebrovascular diseases	430,433,435–438	9,380	42.3	8,740	39.9	79,520	45.9	75,320	44.0	116,120	44.7	110,220	42.9
Atherosclerosis	440	1,550	7.0	1,390	6.3	11,980	6.9	11,650	6.8	17,390	6.7	17,000	6.6
Other diseases of arteries, arterioles, and capillaries	441–448	2,040	9.2	1,920	8.7	18,040	10.4	17,930	10.5	26,530	10.2	26,000	10.1
Acute bronchitis and bronchiolitis	466	10	*	30	*	430	0.2	420	0.2	570	0.2	600	0.2
Pneumonia and influenza	480–487	5,840	26.4	5,310	24.2	58,630	33.9	55,570	32.4	82,780	31.9	77,910	30.3
Pneumonia	480–486	5,840	26.4	5,310	24.2	57,400	33.2	54,870	32.0	81,320	31.3	77,160	30.0
Influenza	487	–	*	–	*	1,230	0.7	690	0.4	1,460	0.6	740	0.3
Chronic obstructive pulmonary diseases and allied conditions	490–496	7,330	33.1	6,510	29.7	70,560	40.8	69,700	40.7	101,480	39.1	97,510	37.9
Bronchitis, chronic and unspecified	490–491	250	1.1	340	1.5	2,460	1.4	2,530	1.5	3,520	1.4	3,670	1.4
Emphysema	492	1,340	6.0	1,040	4.7	11,800	6.8	12,660	7.4	17,120	6.6	17,980	7.0
Asthma	493	480	2.2	320	1.4	3,710	2.1	3,520	2.0	5,060	1.9	4,900	1.9
Other chronic obstructive pulmonary diseases and allied conditions	494–496	5,250	23.7	4,810	21.9	52,590	30.4	50,980	29.8	75,780	29.2	70,960	27.6
Ulcer of stomach and duodenum	531–533	330	1.5	530	2.4	4,200	2.4	4,010	2.3	5,740	2.2	5,830	2.3
Appendicitis	540–543	40	*	30	*	220	0.1	310	0.2	360	0.1	370	0.1
Hernia of abdominal cavity and intestinal obstruction without mention of hernia	550–553,560	440	2.0	530	2.4	4,000	2.3	3,720	2.2	6,060	2.3	5,830	2.3
Chronic liver disease and cirrhosis	571	2,150	9.7	1,990	9.1	17,000	9.8	16,020	9.3	25,650	9.9	24,280	9.4
Cholelithiasis and other disorders of gallbladder	574–575	320	1.4	260	1.2	1,890	1.1	1,810	1.1	2,750	1.1	2,690	1.0
Nephritis and nephrotic syndrome, and nephrosis	580–589	1,890	8.5	1,830	8.3	16,280	9.4	17,100	10.0	23,840	9.2	24,800	9.7
Acute glomerulonephritis and nephrotic syndrome	580–581	30	*	20	*	200	0.1	210	0.1	320	0.1	270	0.1
Chronic glomerulonephritis, nephritis and nephropathy, not specified as acute or chronic, and renal sclerosis, unspecified	582–583,587	120	0.5	120	0.5	1,020	0.6	1,050	0.6	1,540	0.6	1,530	0.6
Renal failure, disorders resulting from impaired renal function, and small kidney of unknown cause	584–586,588–589	1,740	7.8	1,690	7.7	15,060	8.7	15,840	9.2	21,980	8.5	22,990	8.9
Infections of kidney	590	80	*	40	*	710	0.4	710	0.4	990	0.4	1,010	0.4
Hyperplasia of prostate	600	20	*	60	*	220	0.1	310	0.2	360	0.1	390	0.2
Complications of pregnancy, childbirth, and the puerperium	630–676	30	*	20	*	250	0.1	190	0.1	360	0.1	340	0.1
Pregnancy with abortive outcome	630–638	10	*	10	*	60	*	40	*	80	*	60	*
Other complications of pregnancy, childbirth, and the puerperium	640–676	20	*	10	*	190	0.1	150	0.1	280	0.1	270	0.1
Congenital anomalies	740–759	1,080	4.9	980	4.5	7,420	4.3	7,630	4.4	11,410	4.4	11,540	4.5
Certain conditions originating in the perinatal period	760–779	1,260	5.7	1,400	6.4	9,580	5.5	10,340	6.0	14,850	5.7	15,510	6.0
Birth trauma, intrauterine hypoxia, birth asphyxia, and respiratory distress syndrome	767–769	240	1.1	270	1.2	1,710	1.0	1,870	1.1	2,760	1.1	2,930	1.1
Other conditions originating in the perinatal period	760–766,770–779	1,020	4.6	1,120	5.1	7,870	4.5	8,470	4.9	12,090	4.7	12,580	4.9
Symptoms, signs, and ill-defined conditions	780–799	3,380	15.2	3,140	14.3	27,310	15.8	26,780	15.6	39,830	15.3	38,440	15.0
All other diseases	Residual	16,560	74.7	15,610	71.2	136,930	79.1	132,360	77.3	202,020	77.8	191,650	74.6
Accidents and adverse effects	E800–E949	8,390	37.9	8,140	37.1	58,650	33.9	56,650	33.1	89,020	34.3	84,560	32.9
Motor vehicle accidents	E810–E825	4,130	18.6	3,950	18.0	27,090	15.6	25,870	15.1	42,010	16.2	39,980	15.6
All other accidents and adverse effects	E800–E807,E826–E949	4,270	19.3	4,190	19.1	31,570	18.2	30,790	18.0	47,010	18.1	44,590	17.4
Suicide	E950–E959	2,710	12.2	2,790	12.7	20,500	11.8	19,800	11.6	30,700	11.8	28,910	11.3
Homicide and legal intervention	E960–E978	2,280	10.3	2,170	9.9	16,000	9.2	16,320	9.5	24,460	9.4	24,640	9.6
All other external causes	E980–E999	140	0.6	240	1.1	1,440	0.8	1,750	1.0	2,290	0.9	2,510	1.0
Human immunodeficiency virus infection ²	*042–*044	3,600	16.2	2,490	11.4	26,050	15.0	23,440	13.7	39,590	15.2	34,940	13.6

¹Includes data for deaths due to Human immunodeficiency virus infection (category numbers *042–*044) shown separately below; see Technical notes.

²Included in All other infectious and parasitic diseases shown above.

NOTES: Figures include all revisions received from the States. Cumulative and 12-month figures for the current year reflect revisions received for previous months, and figures for earlier years may differ from those previously published.

Table 7. Provisional number of deaths and death rates for 16 selected subcategories of Malignant neoplasms, including neoplasms of lymphatic and hematopoietic tissues: United States, August 1993 and 1994, cumulative figures 1993 and 1994, and 12 months ending with August 1993 and 1994

[Data are provisional, estimated from a 10-percent sample of deaths. Rates on an annual basis per 100,000 estimated population. Due to rounding of estimates, figures may not add to totals. For method of computation and information on standard errors of the estimates, see Technical notes]

Cause of death (Ninth Revision, International Classification of Diseases, 1975)	August				January–August				12 months ending with August			
	1994		1993		1994		1993		1994		1993	
	Number	Rate	Number	Rate	Number	Rate	Number	Rate	Number	Rate	Number	Rate
Malignant neoplasms, including neoplasms of lymphatic and hematopoietic tissues ¹140–208	47,800	215.7	46,230	210.8	359,140	207.4	353,310	206.2	537,100	206.8	526,960	205.1
Malignant neoplasm of esophagus150	910	4.1	920	4.2	7,770	4.5	6,670	3.9	11,330	4.4	10,130	3.9
Malignant neoplasm of stomach151	1,210	5.5	1,250	5.7	8,880	5.1	9,350	5.5	13,370	5.1	13,400	5.2
Malignant neoplasms of colon, rectum, rectosigmoid junction, and anus153–154	5,390	24.3	4,760	21.7	39,000	22.5	37,200	21.7	58,380	22.5	55,970	21.8
Malignant neoplasm of pancreas157	2,440	11.0	2,610	11.9	17,730	10.2	17,640	10.3	26,670	10.3	26,330	10.2
Malignant neoplasms of trachea, bronchus, and lung162	13,350	60.2	12,560	57.3	99,670	57.6	99,230	57.9	149,330	57.5	148,620	57.8
Malignant melanoma of skin172	670	3.0	580	2.6	4,930	2.8	4,370	2.5	7,340	2.8	6,510	2.5
Malignant neoplasm of cervix uteri180	460	2.1	440	2.0	3,140	1.8	3,140	1.8	4,810	1.9	4,530	1.8
Malignant neoplasms of body of uterus and of uterus, part unspecified179,182	480	2.2	460	2.1	3,990	2.3	3,810	2.2	6,180	2.4	5,760	2.2
Malignant neoplasm of ovary183.0	1,280	5.8	1,050	4.8	8,900	5.1	8,590	5.0	13,060	5.0	12,940	5.0
Malignant neoplasm of prostate185	3,270	14.8	3,190	14.5	23,820	13.7	24,020	14.0	35,140	13.5	35,360	13.8
Malignant neoplasm of bladder188	910	4.1	880	4.0	7,300	4.2	7,320	4.3	10,990	4.2	10,800	4.2
Malignant neoplasms of kidney and other and unspecified urinary organs189	940	4.2	910	4.1	7,510	4.3	7,230	4.2	11,380	4.4	10,980	4.3
Malignant neoplasms of brain and other and unspecified parts of nervous system191–192	1,030	4.6	860	3.9	7,770	4.5	7,500	4.4	11,430	4.4	11,240	4.4
Hodgkin's disease201	150	0.7	160	0.7	1,040	0.6	1,110	0.6	1,530	0.6	1,610	0.6
Malignant lymphoma other than Hodgkin's disease200,202	1,940	8.7	1,900	8.7	15,040	8.7	14,160	8.3	22,220	8.6	21,220	8.3
Multiple myeloma and other immunoproliferative neoplasms203	860	3.9	800	3.6	6,700	3.9	6,650	3.9	9,930	3.8	9,790	3.8

¹Includes figures for subcategories not shown below.

NOTES: Figures include all revisions received from the States. Cumulative and 12-month figures for the current year reflect revisions received for previous months, and figures for earlier years may differ from those previously published.

Table 8. Provisional number of deaths and death rates for injury by firearms: United States, August 1993 and 1994, cumulative figures 1993 and 1994, and 12 months ending with August 1993 and 1994

[Data are provisional, estimated from a 10-percent sample of deaths. Rates on an annual basis per 100,000 estimated population. Due to rounding of estimates, figures may not add to totals. For method of computation and information on standard errors of the estimates, see Technical notes]

Cause of death (Ninth Revision, International Classification of Diseases, 1975)	August				January–August				12 months ending with August			
	1994		1993		1994		1993		1994		1993	
	Number	Rate	Number	Rate	Number	Rate	Number	Rate	Number	Rate	Number	Rate
Injury by firearmsE922,E955.0–E955.4,E965.0–965.4,E970,E985.0–E985.4	3,470	15.6	3,580	16.3	25,570	14.8	25,370	14.8	39,000	15.0	37,410	14.6
Accident caused by firearm missileE922	100	*	150	0.7	920	0.5	1,120	0.6	1,480	0.6	1,710	0.7
Suicide by firearmsE955.0–E955.4	1,750	7.9	1,850	8.4	13,130	7.6	12,290	7.2	19,640	7.6	17,950	7.0
Homicide and legal intervention by firearmsE965.0–E965.4,E970	1,610	7.3	1,520	6.9	11,400	6.6	11,730	6.8	17,620	6.8	17,420	6.8
Injury by firearms, undetermined whether accidentally or purposely inflictedE985.0–E985.4	10	*	50	*	120	0.1	240	0.2	250	0.1	340	0.1

NOTES: Figures include all revisions received from the States. Cumulative and 12-month figures for the current year reflect revisions received for previous months, and figures for earlier years may differ from those previously published.

Table 9. Provisional number of deaths under 1 year and infant mortality rates, by age and for 10 selected causes: United States, August 1993 and 1994, cumulative figures 1993 and 1994, and 12 months ending with August 1993 and 1994

[Data are provisional, estimated from a 10-percent sample of deaths. Rates on an annual basis per 100,000 live births. Due to rounding of estimates, figures may not add to totals. For method of computation and information on standard errors of the estimates, see Technical notes]

Age and cause of death (Ninth Revision, International Classification of Diseases, 1975)	August		January–August				12 months ending with August					
	1994		1993		1994		1993		1994		1993	
	Number	Rate	Number	Rate	Number	Rate	Number	Rate	Number	Rate	Number	Rate
Total, under 1 year	2,800	772.4	2,700	776.4	21,300	799.6	22,500	838.5	32,100	802.1	33,700	835.5
Under 28 days	1,900	525.6	1,880	533.7	13,110	493.1	14,030	523.6	20,470	512.1	21,120	523.6
28 days to 11 months	890	246.2	850	241.3	8,130	305.8	8,440	315.0	11,570	289.5	12,580	311.9
Certain gastrointestinal diseases008–009,535,555–558	60	*	10	*	200	7.5	120	4.5	280	7.0	190	4.7
Pneumonia and influenza480–487	20	*	50	*	340	12.8	400	14.9	400	10.0	580	14.4
Congenital anomalies740–759	680	188.1	560	159.0	4,400	165.5	4,370	163.1	6,760	169.1	6,770	167.8
Disorders relating to short gestation and unspecified low birthweight765	370	102.4	480	136.3	2,680	100.8	2,890	107.9	3,880	97.1	4,150	102.9
Birth trauma767	20	*	30	*	160	6.0	120	4.5	180	4.5	150	3.7
Intrauterine hypoxia and birth asphyxia768	50	*	30	*	360	13.5	410	15.3	600	15.0	680	16.9
Respiratory distress syndrome769	150	41.5	200	56.8	1,150	43.3	1,310	48.9	1,920	48.0	2,060	51.1
Other conditions originating in the perinatal period760–764,766,770–779	650	179.8	650	184.5	5,020	188.8	5,470	204.1	7,980	199.7	8,280	205.3
Sudden infant death syndrome798.0	290	80.2	250	71.0	2,410	90.6	3,010	112.3	3,700	92.6	4,500	111.6
All other causesResidual	500	138.3	480	136.3	4,510	169.6	4,360	162.7	6,340	158.6	6,340	157.2

NOTES: Figures include all revisions received from the States. Cumulative and 12-month figures for the current year reflect revisions received for previous months, and figures for earlier years may differ from those previously published.

Technical notes

Nature and sources of data

Data in this report are provisional unless otherwise specified and include only events occurring within the United States. Mortality data exclude fetal deaths.

Birth, death, and infant death figures in tables 2 and 4 for each State are estimates by State of residence. These estimates are derived by applying adjustment ratios to the actual counts of certificates for all events occurring in the State and received in registration offices during a 1-month period regardless of date of the event. The adjustment ratios for each data year represent the observed relationship between final State occurrence and residence figures for the three most recent years for which final data were available and are expressed as a single ratio for each State. As in previous years, monthly State marriage and divorce figures represent the actual count of all events occurring in the State (State of occurrence) that were received in the registration offices during the 1-month period. Delay in the receipt of certificates in a registration office may result in a low State figure for a given month followed by a high figure for the month(s) in which the delayed records are received. Data for previous months and cumulative data include revised figures received from the States.

Figures for births, deaths, and infant deaths for California shown in tables 2 and 4 contain adjustments for varying length of State reporting periods. Figures for Texas for all events shown in tables 2-4 also are adjusted for varying length of State reporting periods. The figures for both States are adjusted by the ratio between the number of days in the data month and the number of days in the State reporting period. The adjusted figures are included in the U.S. totals shown elsewhere in this report.

U.S. totals for births, deaths, and infant deaths are based on the State estimates by State of residence and, therefore, in effect, exclude events to nonresidents of the United States. Events to nonresidents of the United

States are included in all marriage and divorce figures. The effect of excluding events to nonresidents from the U.S. totals is small.

Provisional totals for the United States include estimates for State data shown as not available. Provisional totals for births and marriages for the entire United States include adjustments for observed differences between provisional and final monthly figures.

Divorce figures include reported annulments. The monthly national divorce estimate is obtained by multiplying the total for the reporting areas by the ratio observed between the most recent final annual divorce total for the United States and the provisional total for the reporting areas combined.

Random variation—Although the counts in this report are not subject to sampling variability (except the Current Mortality Sample), they may be affected by random variation. When the number of events is small and the probability of such an event is small, considerable caution must be observed in interpreting the data. Such infrequent events may be assumed to follow a Poisson probability distribution. For this distribution a simple approximation may be used to estimate the random variation as follows:

If N is the number of events in the population and R is the corresponding rate, the chances are 19 in 20 that

$$1. N - 2\sqrt{N} \text{ and } N + 2\sqrt{N}$$

covers the “true” number of events.

$$2. R - 2\frac{R}{\sqrt{N}} \text{ and } R + 2\frac{R}{\sqrt{N}}$$

covers the “true” rate.

If the rate R_1 corresponding to N_1 events is compared with the rate R_2 corresponding to N_2 events, the difference between the two rates may be regarded as statistically significant at the 0.05 level if it exceeds

$$2\sqrt{\frac{R_1^2}{N_1} + \frac{R_2^2}{N_2}}$$

Additional information on random variation in numbers of events, rates, and ratios may be found in the technical

appendixes of *Vital Statistics of the United States, 1989*, volumes I and II.

Rates

Rates are on an annual basis and, except for infant mortality rates, are per 1,000 or 100,000 estimated population residing in the United States. The populations used for computing these rates are furnished by the U.S. Bureau of the Census. Rates shown in this report were computed using populations comparable to those used for final data. Monthly rates are based on populations estimated for the specific month. Year-to-date rates are averages of monthly rates that have been weighted by the number of days in the corresponding months. Rates for 12-month periods are the sum of events for the period per population estimated at the midpoint of the period.

Infant mortality rates are deaths under 1 year of age for the specified period (monthly, year-to-date, or 12-month period) per 1,000 or 100,000 live births. Births used for computing monthly and year-to-date infant mortality rates are adjusted for monthly variation in the number of births. Births used to compute 12-month rates do not contain this adjustment. Births used for computing infant mortality rates are not corrected for observed differences between provisional and final monthly figures as described in Nature and sources of data. Because monthly infant mortality rates are based on relatively few events, they are highly variable. Therefore, comparisons of monthly infant mortality rates should be interpreted cautiously; see Random variation.

Age-adjusted death rates are used to compare relative mortality risks across groups and over time. However, they should be viewed as constructs or indexes rather than as direct or actual measures of mortality risk. Statistically, they are weighted averages of the age-specific death rates, where the weights represent the fixed population proportions by age. See chapter 5 of an earlier report (2). The age-adjusted death rates presented in this report were computed by the direct method, that is, by applying age-specific death rates to the U.S. standard million population (3). See also chapter 10 of an earlier report (2). Age groups in table 5 were used to compute the age-adjusted

rates shown in that table. The age-adjusted death rates on which the State maps are based and which are shown with the State maps were computed from average annual age-specific death rates in 10-year age groups for the specified 3-year period. The average annual age-specific death rates were computed by dividing the number of deaths in an age group for the 3-year period by three times the population in that age group estimated at the midpoint of the period (4). It is important not to compare age-adjusted rates with crude rates.

Current Mortality Sample

The Current Mortality Sample (CMS) is a 10-percent systematic sample of death certificates drawn each month after the certificates are counted in the State registration offices. Deaths and death rates for the United States by age, race, sex, and cause are estimated based on the sample. Because of the additional time required to select and process the certificates, data based on the CMS are published 1 month after publication of the U.S. and State counts. Complete information concerning the underlying cause of death sometimes is not available when the sample is drawn. As a result, estimates based on sample counts for certain causes are biased. Correction for bias is not made in this report but is made in the annual summary (issue number 13 in this series) each year.

Estimated numbers of deaths based on the sample were proportionately adjusted to be consistent with estimates based on the count of death certificates received in State registration offices.

HIV infection—Beginning with data for 1987, the National Center for Health Statistics introduced category numbers *042–*044 for classifying and coding Human immunodeficiency virus infection. The asterisk before the category numbers indicates that these codes are not part of the *Ninth Revision, International Classification of Diseases*. Deaths classified to these categories are included in All other infectious and parasitic diseases in the List of 72 Selected Causes of Death and are also shown separately at the bottom of table 6.

Sampling variability—Because the estimates of deaths and death rates presented in this report (with the exception of total deaths and deaths under 1 year) are based on a sample of death certificates, they are subject to sampling variability. The estimated relative standard error shown in the following table is a measure of the sampling error of the estimated number of deaths (or of the estimated death rate) expressed as a percent of the estimate. The first column refers to monthly estimates; the second, to annual; cumulative year-to-date totals fall between the two.

The chances are about 2 in 3 that the percent difference between an estimate and the result of a complete count is less than the percent shown. The chances are about 19 in 20 that the percent difference is less than twice the percent shown. A figure based on 100 or fewer estimated deaths has a relative standard error of 30 percent or more and is, therefore, considered unreliable. A rate based on 100 or fewer estimated deaths has been replaced by an asterisk.

Unless otherwise specified, comparisons made in the text between death rates based on the CMS were statistically significant at the 0.05 level of significance. Lack of comment in the text about any two rates does not mean

that the difference was tested and found not to be significant at this level.

Mortality Surveillance System—The Mortality Surveillance System (MSS) charts are based entirely on monthly provisional data from the CMS. Where sample size permits, age-race-sex comparisons are made for the causes of death. Where sample size is too small, only age-sex comparisons are made. A time series regression model of the following form was used:

$$Y(t) = A_0 + A_1t + A_2t^2 + C \cos(2\pi t/12) + S \sin(2\pi t/12) + \epsilon_t$$

where

$Y(t)$ = monthly death rate at time t

t = month number

A_0 = coefficient, which, together with C determines the Y -intercept

A_1 = coefficient of t

A_2 = coefficient of t^2

C, S = coefficients of the harmonic terms

ϵ_t = error terms, assumed to be independent and normally distributed with means 0 and constant variances,

and $\cos(2\pi t/12)$ and $\sin(2\pi t/12)$ are 12-month period harmonic functions.

The coefficients of this model were estimated using provisional monthly death rates for January 1985 through the month that is 12 months prior to the latest month shown in the chart. The graph of the estimated equation and 95-percent prediction intervals is shown for January 1986 through the month that is 12 months prior to the latest month shown in the chart; the graph for the subsequent 12 months is projected (5). Symbols in each chart represent actual monthly death rates based on the CMS. In some cases the data are converted by the natural logarithm before fitting the model. For graphical purposes the data are converted back to rates by the inverse of the natural logarithm. This procedure has the advantage of avoiding negative prediction intervals for the model. The models, parameter estimates, and statistical tests for lack of fit are available on request for the charts published in the MSS. Time series

Relative standard errors for estimated numbers of deaths from the Current Mortality Sample expressed as a percent of the estimate

Estimated number of deaths	Relative standard error of estimate (as percent)	
	170,000 estimated deaths each month	2,000,000 estimated deaths each year
10	94.9	94.9
20	67.1	67.1
50	42.4	42.4
100	30.0	30.0
200	21.2	21.2
500	13.4	13.4
1,000	9.5	9.5
2,000	6.7	6.7
5,000	4.2	4.2
10,000	2.9	3.0
20,000	2.0	2.1
50,000	1.1	1.3
100,000	0.6	0.9
200,000	0.6
500,000	0.4
1,000,000	0.2

regression models have been used previously to describe trends in mortality data (6–8). A list of MSS cause-of-death topics and comparable *Healthy People 2000* (1) objectives is presented on the back of this report.

State maps

Unlike other data presented in this report, the State maps are based on final data instead of provisional data. The age-adjusted death rates used to produce the State maps were computed by using a 3-year total number of deaths for 1989–91 and the 1990 census population enumerated as of April 1, 1990 (4). Assigning the States into the given categories on the maps was carried out in two steps: a) determining whether the State age-adjusted death rate differed significantly from the corresponding U.S. rate at the 0.05 level of significance; b) then grouping the State rates found to be significantly different from the U.S. rate into the four categories: 10 highest State rates of those significantly greater than the U.S. rate, remaining State rates significantly greater than the U.S. rate, 10 lowest State rates of those significantly lower than the U.S. rate, and remaining State rates significantly lower than the U.S. rate. Age-adjusted death rates and the corresponding 95-percent confidence intervals are shown in the tables. The symbols † and †† in the tables are used to denote State rates that differ significantly from the U.S. rate at the 0.05 and 0.01 levels of significance, respectively. Different procedures were used to determine tests of statistical significance and confidence intervals, depending on the number of deaths.

For 50 deaths or more, the standard normal *Z* statistic was used to perform the significance test:

$$Z = (R'_s - R'_{us}) / \sqrt{S^2(R'_s) + S^2(R'_{us})}$$

where

R'_s = age-adjusted rate for

1989–91 for the given State per 100,000 U.S. standard million population

R'_{us} = age-adjusted rate for 1989–91 for the United States per 100,000 U.S. standard million population

$S^2(R'_s)$ = estimated variance of the age-adjusted death rate for 1989–91 for the State

$S^2(R'_{us})$ = estimated variance of the age-adjusted death rate for 1989–91 for the United States

The variance of the age-adjusted death rate was computed in terms of the variances of age-specific death rates (9) under the assumption that the age-specific death rates are binomial proportions (10). The 95-percent confidence limits were estimated as follows:

$$\text{Lower limit} = R'_s - 1.96 \cdot S(R'_s)$$

and

$$\text{Upper limit} = R'_s + 1.96 \cdot S(R'_s)$$

For 1–49 deaths the lower and upper 95-percent confidence limits were estimated as described elsewhere (11). The difference between the State and U.S. age-adjusted rates was determined to be statistically significant at the 0.05 or 0.01 level if the rates' respective 95-percent or 99-percent confidence limits did not overlap.

For zero deaths, the following test statistic (λ) was used to perform the significance test:

$$\lambda = \left[\sum_{x=1}^n M_{x(us)} \cdot P_{x(s)} \right] / 100,000$$

where

$M_{x(us)}$ = age-specific death rate per 100,000 population in the *x*th age group for the United States

$P_{x(s)}$ = population in the *x*th age group for the given State

n = number of age groups = 11.

The difference between the State and U.S. age-adjusted rates was determined to be statistically significant at the 0.05 level

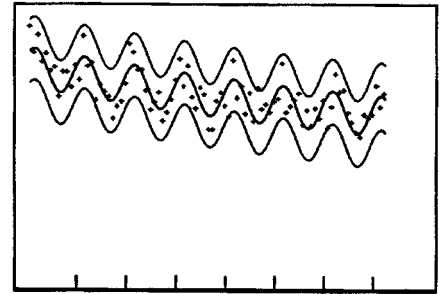
if $3.00 \leq \lambda < 4.61$. The difference between the State and U.S. age-adjusted rates was determined to be statistically significant at 0.01 level if $\lambda \geq 4.61$ (12). For zero deaths, confidence limits for the age-adjusted death rates are not applicable.

References

1. U.S. Department of Health and Human Services. *Healthy People 2000: National health promotion and disease prevention objectives*. Washington: Public Health Service. 1991.
2. Feinleib M, Zarate AO, eds. *Reconsidering age adjustment procedures: Workshop proceedings*. National Center for Health Statistics. *Vital Health Stat* 4(29). 1992.
3. Grove RD, Hetzel AM. *Vital statistics rates in the United States, 1940–1960*. Public Health Service. Washington: National Center for Health Statistics. 1968.
4. U.S. Bureau of the Census. Unpublished data from the 1990 census consistent with State population estimates by age and sex: 1980 to 1992; series P-25, no 1106. U.S. Government Printing Office, 1993.
5. Ostle B. *Statistics in research*. 2d ed. Ames, Iowa: The Iowa State University Press. 159–221. 1963.
6. Lui KJ, Kendal AP. Impact of influenza epidemics on mortality in the United States from October 1972 to May 1985. *Am J Public Health* 77(6):712–6. 1987.
7. Serfling RE. Methods for current statistical analysis of excess pneumonia-influenza deaths. *Public Health Rep* 78(6):494–506. 1963.
8. Shumway RH. *Applied statistical time series analysis*. Englewood Cliffs, New Jersey: Prentice-Hall 1988.
9. Chiang CL. Standard error of the age-adjusted death rate. *Vital statistics-Special reports*. 47(9). National Office of Vital Statistics. Washington: Public Health Service. 1961.
10. Seal HL. Mortality data and the binomial probability law. *Skand. Actuar*. 33:188–216. 1949.
11. Haenszel W, Loveland DB, Sirken MG. Lung cancer mortality as related to residence and smoking histories. I. White males. *JNCI* 28:947–1001. 1962.
12. Louis TA. Confidence intervals for a binomial parameter after observing no successes. *The American Statistician* 35(3):154. 1981.

Mortality Surveillance System topics

<i>MVSR issue</i>	<i>Cause-of-death</i>	<i>Healthy People 2000 Objective Number</i>
Vol. 42 No. 10	Suicide	6.1 (7.2)
Vol. 42 No. 11	Accidents and adverse effects, Homicide and legal intervention	9.1, 7.1 (¹)
Vol. 42 No. 12	Infant mortality, Neonatal mortality, Postneonatal mortality, and Sudden infant death syndrome	14.1 (²)
Vol. 43 No. 1	Human immunodeficiency virus infection	(³)
Vol. 43 No. 2	Cerebrovascular diseases	15.2
Vol. 43 No. 3	Chronic obstructive pulmonary diseases and allied conditions	3.3
Vol. 43 No. 4	Diabetes mellitus	17.9
Vol. 43 No. 5	Diseases of heart	1.1 (2.1, 3.1, 15.1)
Vol. 43 No. 6	Malignant neoplasms including neoplasms of lymphatic and hematopoietic tissues	2.2 (16.1)
Vol. 43 No. 7	Malignant neoplasms of trachea, bronchus, and lung	3.2 (16.2)
Vol. 43 No. 8	Malignant neoplasm of prostate, Malignant neoplasm of breast	(⁴), 16.3
Vol. 43 No. 9	Motor vehicle accidents	9.3



¹No *Healthy People 2000* objective addresses mortality from Legal intervention.
²No *Healthy People 2000* objective addresses mortality from Sudden infant death syndrome.
³No *Healthy People 2000* objective addresses mortality from this cause. See Chapter 18 for objectives related to Human immunodeficiency virus infection.
⁴No *Healthy People 2000* objective addresses mortality from Malignant neoplasm of prostate.

NOTE: The cause-of-death categories used in *Healthy People 2000* objective(s) may differ from those used in NCHS Mortality Tabulation Lists.

Suggested citation

National Center for Health Statistics. Births, marriages, divorces, and deaths for September 1994. Monthly vital statistics report; vol 43 no 9. Hyattsville, Maryland: Public Health Service. 1995.

Copyright information

All material appearing in this report is in the public domain and may be reproduced or copied without permission; citation as to source, however, is appreciated.

National Center for Health Statistics

Acting Director
Jack R. Anderson

Acting Deputy Director
Jennifer H. Madans, Ph.D.

Associate Director for
Vital and Health Statistics Systems
Peter L. Hurley

Division of Vital Statistics

Acting Director
Mary Anne Freedman

DEPARTMENT OF HEALTH & HUMAN SERVICES

Public Health Service
Centers for Disease Control and Prevention
National Center for Health Statistics
6525 Belcrest Road
Hyattsville, Maryland 20782

FIRST CLASS MAIL
POSTAGE & FEES PAID
PHS/NCHS
PERMIT NO. G-281

OFFICIAL BUSINESS
PENALTY FOR PRIVATE USE, \$300

To receive this publication regularly, contact the National Center for Health Statistics by calling 301-436-8500

DHHS Publication No. (PHS) 95-1120
4-1067 (3/95)