

The Southern Nevada Public Land Management Act:

snpлма
Southern Nevada Public Land Management Act

Lake Tahoe Federal
Advisory Committee
January 11, 2008



Introduction & Purpose



Las Vegas Valley

The SNPLMA was enacted in 1998 to provide for the orderly disposal of certain Federal lands in Clark County, Nevada, and expenditure of the sale proceeds and other revenues for purposes identified in the Act.



Introduction & Purpose

The SNPLMA has been amended six times:

- **Consolidated Appropriations Act of 1999**
- **Ivanpah Valley Airport Public Lands Transfer Act, 2000**
- **Clark County Conservation of Public Land and Natural Resources Act, 2002**
- **Department of the Interior and Related Agencies Appropriation Act, 2003 (Added Lake Tahoe restoration projects)**
- **Lincoln County Conservation, Recreation, and Development Act, 2004**
- **White Pine County Conservation, Recreation, and Development Act of 2006**

SNPLMA Goal #1:

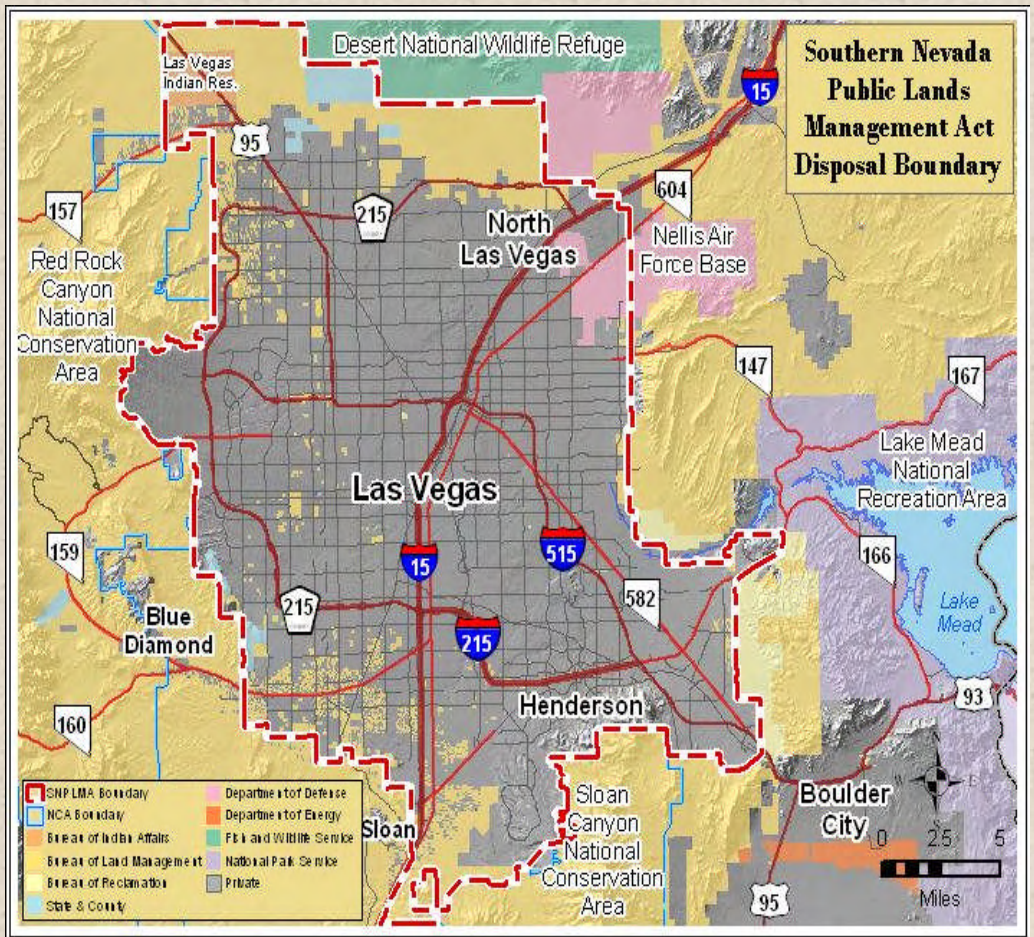


Provide for the Orderly
Disposal of the Public
Domain



Land Disposal

- The disposal boundary was set by Congress in 1998 and again in 2002.
- Local governments reserve lands for Affordable Housing or conveyance under the R&PP Act
- Parcels in the remaining area are then “jointly selected” by local governments and the Federal Government

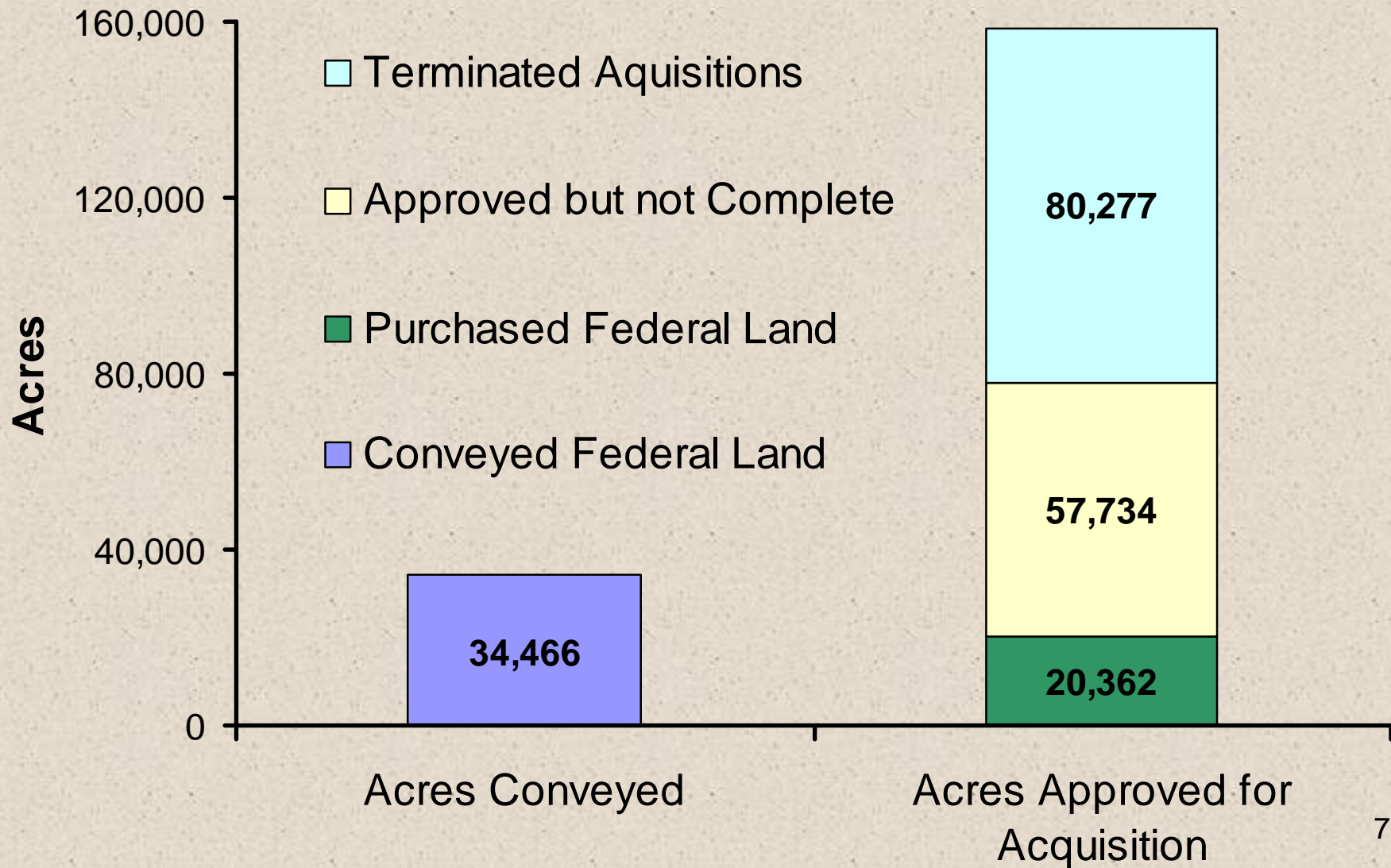




Disposal of Land in the Las Vegas Valley: What's the Record?

Acres of Public Domain Within Disposal Boundary	74,000
Acres Reserved (R&PP, Affordable Housing, Conservation Transfer Area)	- 12,568
Acres Sold or Exchanged	- 34,466
Acres Remaining for Disposal	= 26,966

Disposal of Land in Nevada: What's the Record?





What Becomes of the Sale Parcels?



Mountain's Edge: Master Planned Community in Southern Las Vegas Valley (Public Domain until 2003) 8

SNPLMA Goal #2:



Support Other Public
Purposes with
the Sale Proceeds

Allocation of Revenue

- 5% to the State of NV General Education Fund.
- 10% to the Southern Nevada Water Authority for water system infrastructure in Clark County.
- 85% to the SNPLMA Special Account, for expenditures in eight project categories that are approved by the Secretary of the Interior.

Mandated Expenditures

- **SNPLMA Revenues Are Set-Aside For:**
 - Management of Sloan Canyon NCA (\$68.1 million)
 - Virgin River MSHCP & Monitoring (\$11.7 million)
 - Acquisition of Lands at Lake Tahoe (\$61.4 million)
 - Acquisition of in-holdings in the Mojave National Preserve (CA) and protection of petroglyphs in Clark County (\$22.3 million)
 - BARCAS water study (\$6 million)

Authorized Expenditures: SNPLMA Operations

- Other Expenditures Are Authorized:
 - Costs to administer the SNPLMA, including preparation of land sales
 - Clean-up and protection of lands reserved for affordable housing



Authorized Expenditures: The Special Account



Two Categories Support Local Government Projects:

- Parks, Trails, and Natural Areas
- Clark County MSHCP Development and Implementation

Six Categories Support Federal Agency Projects:

- Land Acquisitions in Nevada
- Restoration Projects Under the Lake Tahoe Restoration Act (NV & CA)
- Capital Improvements
- Conservation Initiatives
- Hazardous Fuels Reduction and Wildfire Prevention
- Eastern Nevada Landscape Restoration Project

New Categories for Round 8

Hazardous Fuels and Wildfire Prevention

Eastern Nevada Landscape Restoration Project

United States
Department of
Agriculture
Forest Service

Tahoe Regional
Planning Agency

Nevada Tahoe
Resource Team

Nevada Division of
Forestry

Nevada Division of
State Lands

Nevada Fire Safe
Councils

California
Department of
Forestry and Fire
Protection

California Tahoe
Conservancy

California State
Parks

North Tahoe
Fire Protection
District

North Lake Tahoe
Fire Protection
District

Tahoe-Douglas Fire
Protection District

Lake Valley Fire
Protection District

Meeks Bay Fire
Protection District

South Lake Tahoe
Fire Department

Fallen Leaf Fire
Department

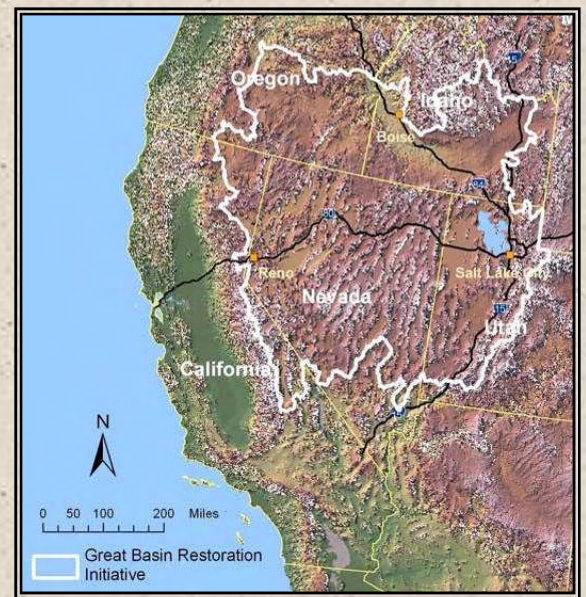
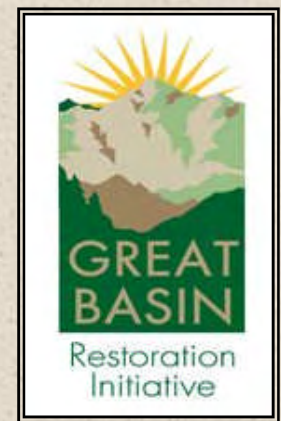
Lake Tahoe Basin

Multi-Jurisdictional Fuel Reduction and Wildfire Prevention Strategy

10 Year Plan

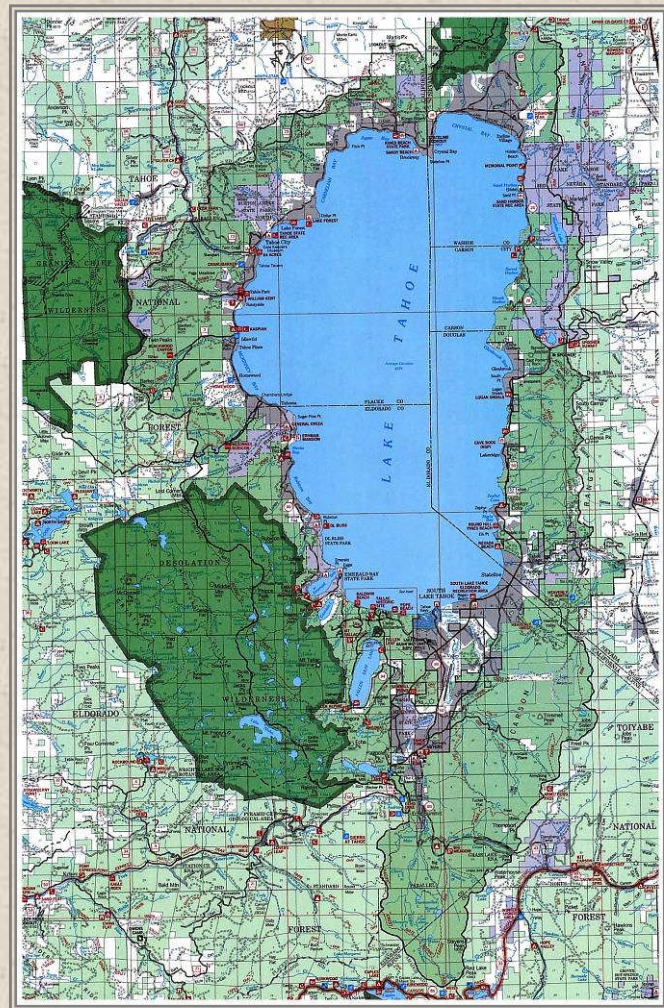
September 20, 2007 Draft

Sample 10-Year Plan Funded by SNPLMA



ENLRP supports ecosystem restoration in Lincoln and White Pine Counties, NV

Locations of Fuel Treatment Areas



Lake Tahoe Basin and Carson Range



Spring Mountains NRA



Approved Funding and Projects Through Round 7

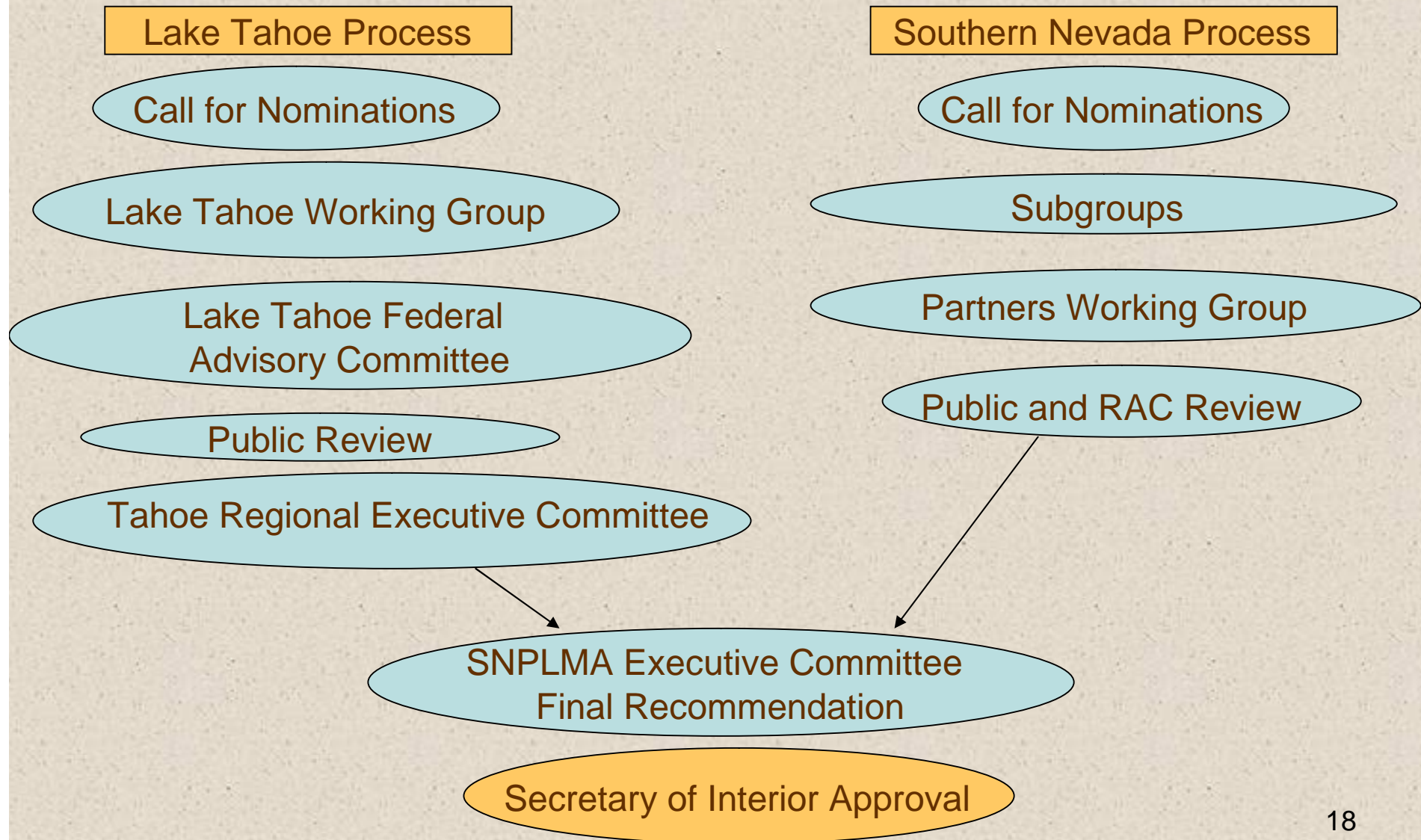
	Approved Projects	Approved Funding
Parks, Trails and Natural Areas	147	\$1,050,368,331
Capital Improvements	198	\$439,258,237
MSHCP	62	\$51,206,388
Acquisition	123	\$339,807,386
Conservation Initiatives	69	\$178,240,518
Lake Tahoe Restoration (includes Round 8 approved August 17, 2007)	185	\$173,960,965
Special Account Reserve		\$84,900,000
Pre-Proposal Planning Reserve		\$30,000,000
Total	784	\$2,347,741,825
(With Approved Lake Tahoe Set Aside)		(\$2,404,265,760)



Project Completion/Termination: Overall SNPLMA Progress

	Completed	In Process	Terminated	Total	%Complete or Terminated
Round 1	20	0	7	27	100%
Round 2	39	2	12	53	96%
Round 3	30	39	13	82	52%
Round 4	21	80	32	133	40%
Round 5	10	137	4	210	7%
Round 6	0	228	3	172	2%
Total	120	486	71	677	28%

Nomination To Approval Process



SNPLMA Beyond 2007



Revenue Projections

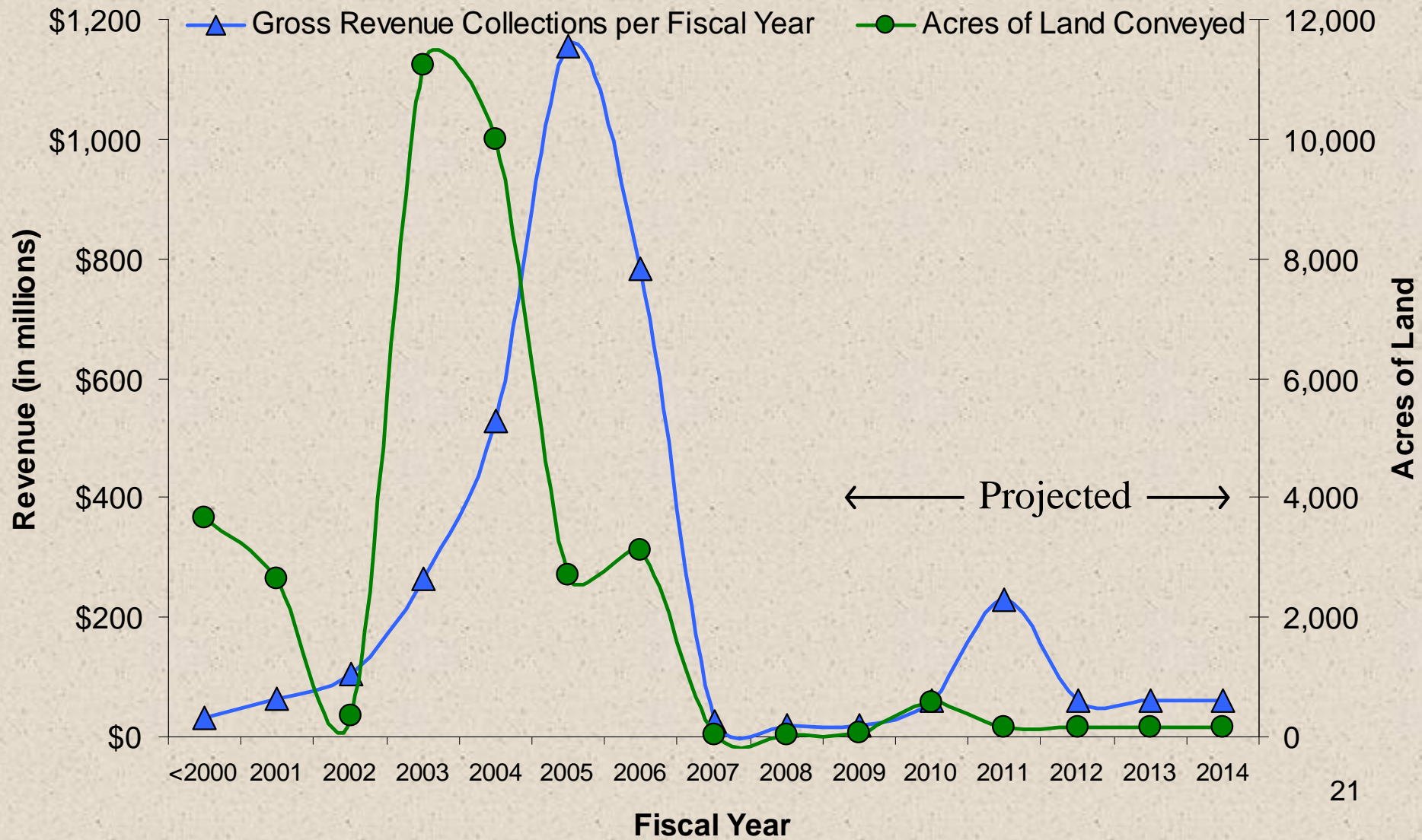
Knott Creek Reservoir Acquisition, Winnemucca (BLM)



SNPLMA Revenue as of 11/1/07

Total Revenue from Sales	\$2,977,860,099
Payments to General Education (5%) and SNWA (10%)	(\$443,610,454)
Interest Earned on the Special Account	\$221,832,428
Total Deposits into the Special Account	\$2,756,082,073
Reserves for Legislative Set Asides, Operating Costs Through FY 2010	(\$239,110,242)
Allocated Through Round 8	(\$2,472,720,968)
Total Available for Allocation (Round 9+)	\$44,250,863

Land Sale Trends



Transfers to Local Governments Will Reduce the Special Account Balance

Reimbursement/Transfers to Local Governments					
FY	1 st Qtr	2 nd Qtr	3 rd Qtr	4 th Qtr	Total
2007	\$4,907,560	\$3,182,348	\$19,347,493	\$86,164,648	\$113,602,049
2008	\$58,941,286	\$63,811,379	\$82,147,548	\$78,405,913	\$283,306,126

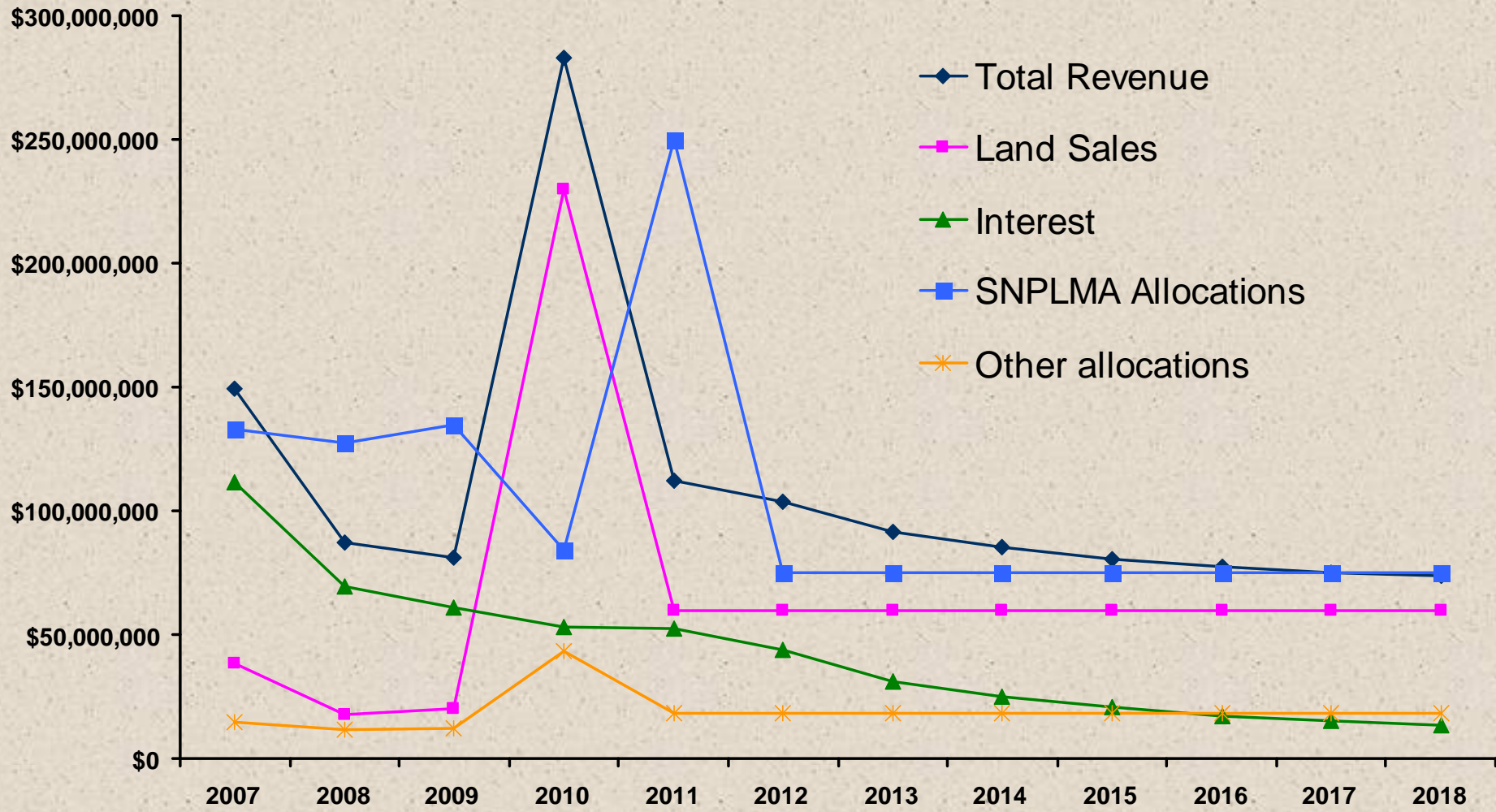
- Factors contributing to the escalation payments to local governments:
 - PTNA projects from rounds 3, 4 and 5 entering into construction phases.
 - Expedited payment processing through the ASAP system.

Revenue Projections

Year	Projected Land Sales	Projected Interest Earned
2007	\$26,035,745	\$111,414,436
2008	\$17,800,000	\$69,227,378
2009	\$20,000,000	\$60,912,567
2010	\$230,000,000	\$52,748,851
2011	\$60,000,000	\$52,249,427
2012	\$60,000,000	\$43,887,528
2013	\$60,000,000	\$31,345,248
2014	\$60,000,000	\$25,069,920
2015	\$60,000,000	\$20,652,892
2016	\$60,000,000	\$17,323,140
2017	\$60,000,000	\$15,126,874
2018	\$60,000,000	\$13,687,266

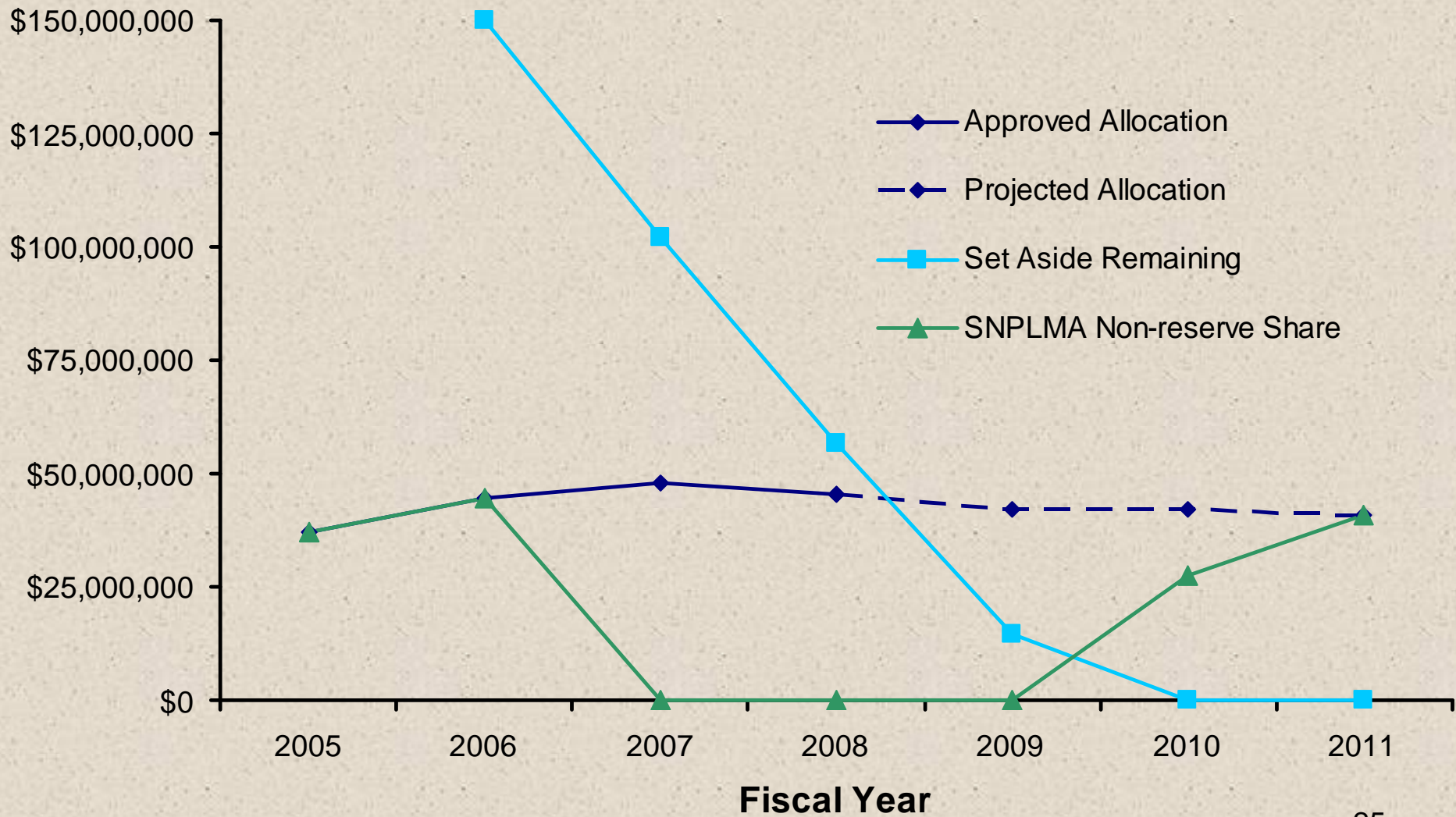


Projected Revenue and Allocation to Special Account





Lake Tahoe Reserve: When will it run out?





Lake Tahoe Allocation and Set Aside

Authorized = \$300 Million

SNPLMA Round	Allocated
5	\$37,084,900
6	\$43,400,000
7	\$48,111,065
8	\$45,365,000
SAR	\$1,362,000
Total	\$175,322,965

Total Remaining = \$124,677,035

Round 6 Set Aside = \$150 Million

SNPLMA Round	Allocated
7	-\$48,111,065
8	-\$45,365,000
	-\$2,000,000
Total	\$95,476,065

Total Remaining = \$54,523,935

Implication of Current Trends

- Fewer Acres Conveyed = Less Revenue
- More Categories = Less \$ for Each Category
- More Counties = Less \$ for Each County



Round 9 Southern Nevada (Not Including Lake Tahoe)

82 Nominations Received in 6 categories	
Total Funding Requested	\$159,374,475
Total Available Round 9 Funding	\$70,000,000 (Including Special Account Reserve (SAR) and Pre-Proposal Planning (PPP))
13 Hazardous Fuels Projects	\$22,949,614
8 Lake Tahoe Hazardous Fuels Projects	\$16,044,954

SNPLMA Revenue



Where Has the Value of
BLM Lands Gone?



50% Has Been Re-Distributed to State, Local, and Regional Governments

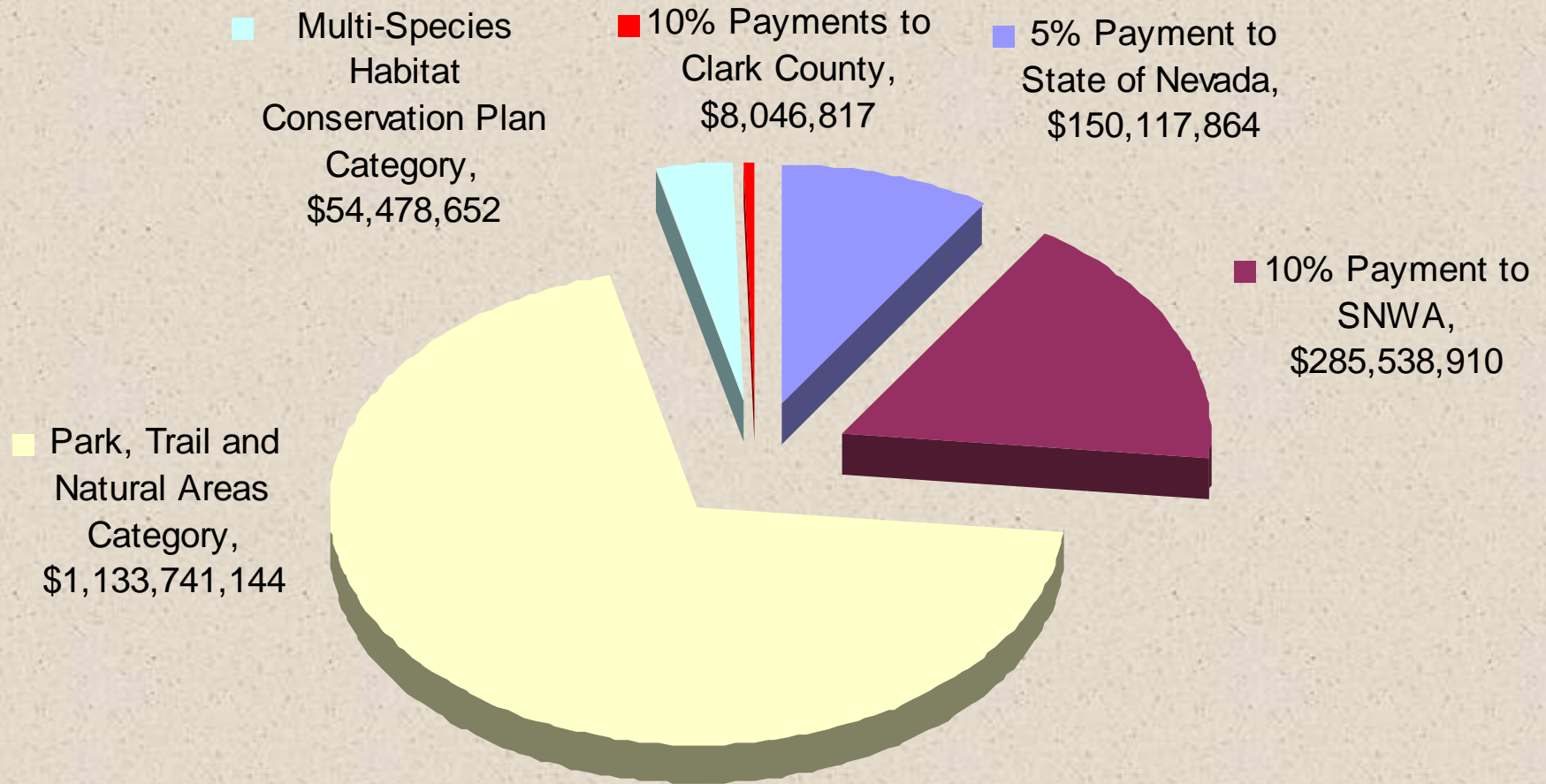
Land Sale and Investment Totals Thru November 1, 2007

Total Revenue from Sales	\$2,977,860,099	
Interest	\$221,832,428	
Total Generated	\$3,199,692,527	

Payments to State, Local and Regional Gov. Entities	Amount	%
5% Payment to State of Nevada	\$150,117,864	4.7%
10% Payment to SNWA	\$285,538,910	8.9%
10% Payment to Clark County Department of Aviation (CMA Lands Only)	\$8,046,817	0.3%
Park, Trail and Natural Areas Category (R.1-R.8 + PPP Projects)	\$1,133,741,144	35.4%
Multi-Species Habitat Conservation Plan Category (R.1-R.8)	\$54,478,652	1.7%
Total Disbursements to State, Local Regional Governments	\$1,631,923,387	51.0%
Total Retained within Federal Ownership	\$1,567,769,140	49.0% ³⁰

Distribution to State Local and Regional Government Entities

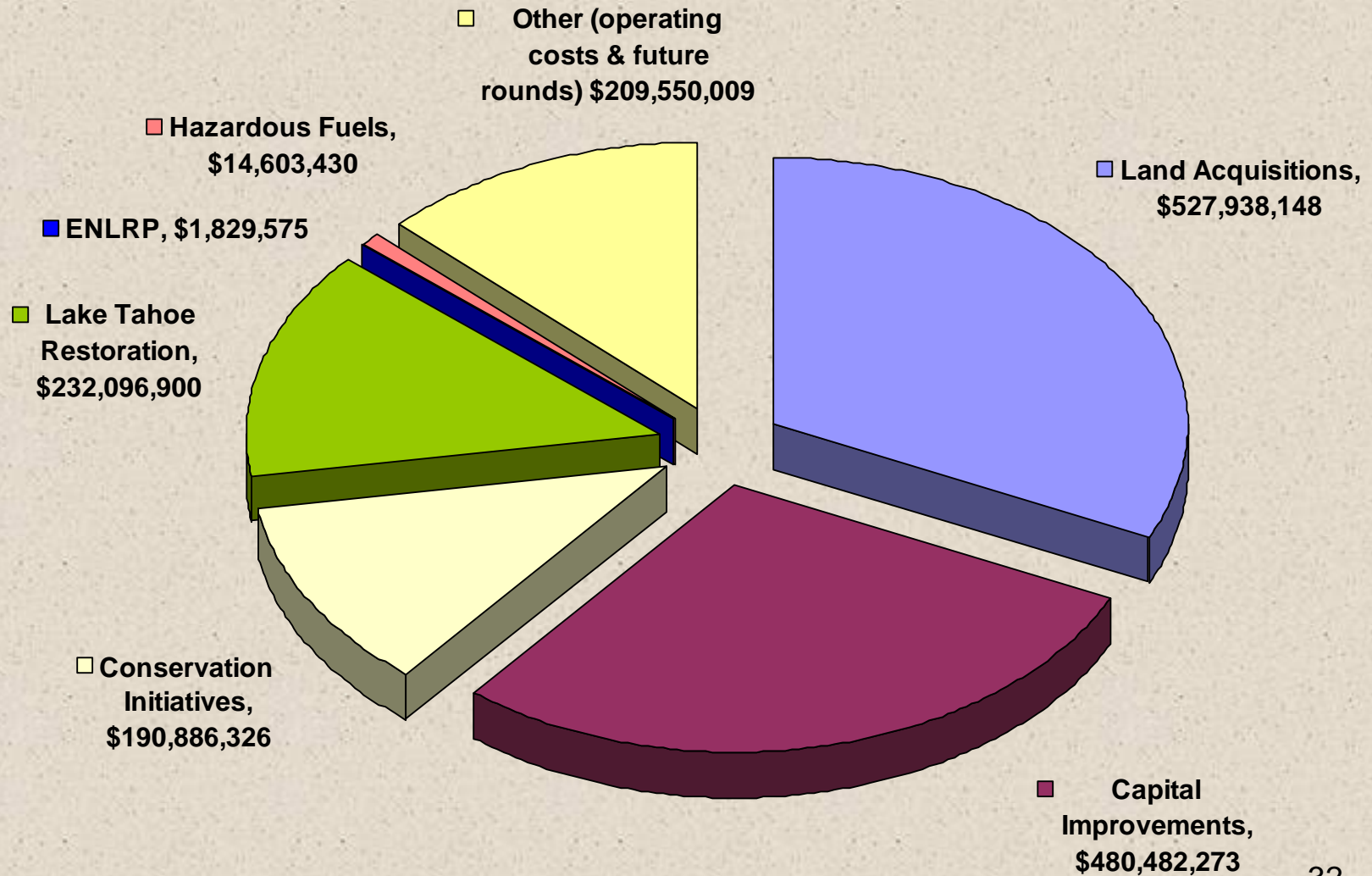
Including Round 8 Final Recommendation





50% Has Been Re-Distributed Among Federal Entities

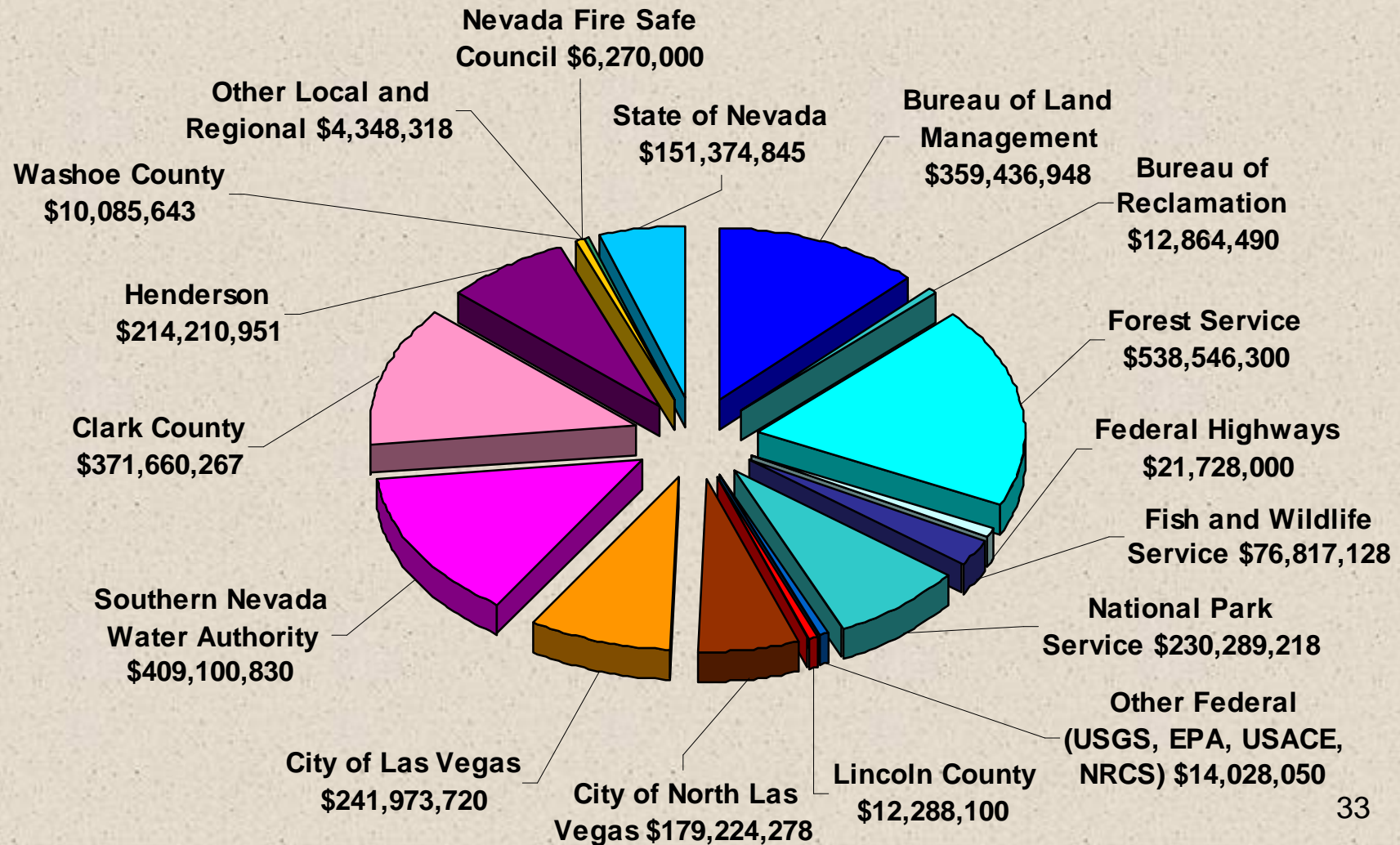
Including Round 8 Final Recommendation





SNPLMA Payments to all Entities

Including Round 8 Final Recommendation



Assets are Being Geographically Re-Distributed

