

FOR IMMEDIATE RELEASE

CONTACTS:

Deschutes & Ochoco National Forests
Sue Olson
541-383-5561

Prineville BLM
Lisa Clark
541-416-6864

Oregon Dept of Forestry
Christy Donham
541-447-5658

July 17, 2007

CENTRAL OREGON WILDLAND FIRE NEWS RELEASE

EXTREME FIRE DANGER PROMPTS FIRE RESTRICTIONS ON FEDERAL LANDS

Bend--Extreme fire danger in Central Oregon has prompted fire officials to restrict certain activities on public lands of the Prineville District Bureau of Land Management (BLM), Ochoco and Deschutes National Forests, and Crooked River National Grassland. **Effective Thursday, July 19, 2007, open fires** will be permitted **only** in certain designated campgrounds on the Ochoco and Deschutes National Forests (see Exhibit A). These are improved areas posted for public use. **No campfires will be allowed on Prineville BLM lands.** Portable cooking stoves using liquefied or bottled fuel may be used in all areas on Prineville BLM and Deschutes and Ochoco National Forest lands. Users are asked to clear an area ten feet in diameter for stove use. These restrictions currently DO NOT apply to Wildernesses administered by the Deschutes National Forest. They DO apply to Wildernesses administered by the Ochoco National Forest.

“We cannot emphasize enough to the recreating public to take extreme care when visiting public lands this time of year,” said Craig Letz, Deputy Interagency Fire Management Officer for Central Oregon Fire Management Service. This includes being aware of where to park your vehicle. Avoid parking where dry vegetation may easily be ignited and carry tools in case a fire does start.

Vehicle use will be limited to developed roads that are constructed for automotive use and are free and clear of flammable debris and vegetation. Ochoco and Deschutes National Forest visitors are restricted to 2- and 4-digit roads and other roads that are paved, gravel or cinder and free of vegetation, with a few minor exceptions, (see Exhibit C). There is a risk of hot catalytic converters coming into contact with the dry grass and brush in the middle of roads and starting fires. Drivers of vehicles traveling in BLM

areas will be required to stay on developed roads that are free of vegetation and carry an axe, shovel and one gallon of water.

Smoking is restricted to an enclosed vehicle or building, in boats on lakes, designated campgrounds, or while stopped in an area at least three feet in diameter that is clear of all flammable material.

Motors on watercraft and the use of generators in designated campgrounds are permitted. Operating any **motorized vehicle on trails** is prohibited on Deschutes and Ochoco National Forest lands. On BLM areas, it is prohibited to operate any type of motorized vehicle off developed roads, except within the Rosland and Millican/ODOT OHV Pit Play and Trail Areas, which will remain open to Class I and III ATV's (See Exhibit B). For site maps and directions, please visit Central Oregon Combined Off-Highway Vehicle Operations (COHVOPS) website at:

<http://www.fs.fed.us/r6/centraloregon/recreation/cohvops/developed.shtml>.

Welding and operating an acetylene or other torch or open flame is also prohibited. In addition, **using an explosive or operating a chainsaw is prohibited.**

Lands protected by the Oregon Department of Forestry in Crook, Deschutes and Jefferson counties have restrictions as well. There are Regulated Use Restrictions currently in place. All open burning is prohibited. This includes debris burning, campfires, charcoal fires, cooking fires and warming fires, except at designated locations. For more information on current private land restrictions, please call (541) 447-5658.

“Your cooperation during this period of extreme fire danger is necessary,” said Letz

Fire restrictions remain in place for portions of the Lower Crooked River, Deschutes River, White River, Lake Billy Chinook, and John Day River. Visitors are encouraged to call the 24-hour fire precautions phone number at (800) 523-4737, and visit local wildland agency websites before visiting their favorite area. This information will be updated as conditions change.

-----*****-----

EXHIBIT A Page 1
DEVELOPED RECREATION SITES
July 17, 2007
OCHOCO NATIONAL FOREST

Campground	Ranger District	Campfires Allowed ?	
Barnhouse	Paulina		No
Big Springs	Paulina		No
Cottonwood	Paulina		No
Cottonwood Pit	Paulina	Yes	
Frazier	Paulina		No
Mud Springs	Paulina		No
Salter's Cabin	Paulina	Yes	
Sugar Creek	Paulina	Yes	
Wolf Creek	Paulina	Yes	
Wolf Creek Industrial	Paulina	Yes	
Wolf Creek Overflow	Paulina		No
Antelope Reservoir	Lookout Mountain	Yes	
Wildcat	Lookout Mountain	Yes	
Allen Camp	Lookout Mountain		No
Walton Lake	Lookout Mountain	Yes	
Deep Creek	Lookout Mountain	Yes	
Ochoco Forest Camp	Lookout Mountain	Yes	
Ochoco Divide	Lookout Mountain	Yes	
Wiley	Lookout Mountain		No
Elkhorn	Lookout Mountain		No
Double Cabin	Lookout Mountain		No
Whistler	Lookout Mountain		No
Scotts Camp	Lookout Mountain		No
Biggs	Lookout Mountain		No
White Rock	Lookout Mountain		No
Wildwood	Lookout Mountain		No
Skull Hollow	Crooked River Nat'l Grassland		No
Henderson Flat OHV	Crooked River Nat'l Grassland		No
Cyrus	Crooked River Nat'l Grassland		No
Haystack Reservoir	Crooked River Nat'l Grassland		No

Exhibit A Page 2
Campgrounds on Crooked River
July 17, 2007
PRINEVILLE DISTRICT BLM

Campground	Crooked River Corridor	Campfires Allowed in Campfire Rings?	
Castle Rock	Crooked River Corridor		No
Still Water	Crooked River Corridor		No
Lone Pine	Crooked River Corridor		No
Palisades	Crooked River Corridor		No
Chimney Rock	Crooked River Corridor		No
Cobble Rock	Crooked River Corridor		No
Post Pile	Crooked River Corridor		No
Poison Butte	Crooked River Corridor		No

EXHIBIT A Page 3
DESIGNATED CAMPGROUNDS
July 17, 2007
DESCHUTES NATIONAL FOREST

Campground	Ranger District	Campfires Allowed in Established Fireplaces?	
Big River	Bend		No
Bull Bend	Bend		No
Cow Meadow	Bend		No
Crane Prairie	Bend	Yes	
Cultus Corral	Bend		No
Big Cove	Bend		No
Little Cove	Bend		No
Deschutes Bridge	Bend		No
West Cultus	Bend		No
Cultus Lake	Bend	Yes	
Devils Lake	Bend		No
Elk Lake	Bend	Yes	
Fall River	Bend		No
Gull Point	Bend	Yes	
Lava Lake	Bend	Yes	
Little Cultus Lake	Bend		No
Little Lava Lake	Bend	Yes	
Little Fawn	Bend		No
Mallard Marsh	Bend		No
North Davis Creek	Bend		No
North Twin	Bend		No
Point	Bend		No
Pringle Falls	Bend		No
Quinn Meadow	Bend	Yes	
Quinn River	Bend		No
Reservoir	Bend		No
Rock Creek	Bend		No
Sheep Bridge	Bend		No
Soda Creek	Bend		No
South	Bend		No
South Twin	Bend	Yes	
Sparks Lake	Bend		No
Todd Lake	Bend		No
Todd Lake Horse Camp	Bend		No
West Cultus Lake	Bend		No
West South Twin	Bend	Yes	
Wickiup Butte	Bend		No
Wyeth	Bend		No

EXHIBIT A Page 4
DESIGNATED CAMPGROUNDS
July 17, 2007
DESCHUTES NATIONAL FOREST

*** Area within Davis Fire Closure**

Campground	Ranger District	Campfires Allowed in Established Fireplaces?	
Contorta Flat Campground & Group Site	Crescent	Yes	
Crescent Creek	Crescent		No
Crescent Lake	Crescent	Yes	
East Davis Lake	Crescent		No
Lava Flow	Crescent		No*
Odell Creek	Crescent	Yes	
Pebble Bay	Crescent		No
Princess Creek	Crescent	Yes	
Serenity Bay	Crescent		No
Simax Beach (3 areas)	Crescent	Yes	
Simax Group	Crescent	Yes	
Spring	Crescent	Yes	
Summit Lake	Crescent		No
Sunset Cove	Crescent	Yes	
Tandy Bay	Crescent		No
Tranquil Cove	Crescent		No
Trapper Creek	Crescent	Yes	
West Davis Lake	Crescent		No
Whitefish Horse Camp	Crescent	Yes	
Windy Group Site	Crescent	Yes	
Boundary Springs	Crescent		No
Crescent/Odell Lake Rec. Residences	Crescent		No
Cabin Lake	Ft Rock		No
Chief Paulina	Ft Rock		No
China Hat	Ft Rock		No
Cinder Hill	Ft Rock	Yes	
East Lake	Ft Rock	Yes	
Hot Springs	Ft Rock		No
Lava Cast Forest (Day Use)	Ft Rock		No
Little Crater	Ft Rock	Yes	
McKay Crossing	Ft Rock		No
Newberry Group	Ft Rock	Yes	
North Cove	Ft Rock		No
Paulina Lake	Ft Rock	Yes	
Pine Mountain	Ft Rock		No
Prairie	Ft Rock		No
Ogden Group	Ft Rock		No
Sand Spring	Ft Rock		No
Swamp Wells	Ft Rock		No

EXHIBIT A Page 5
DESIGNATED CAMPGROUNDS
July 17, 2007
DESCHUTES NATIONAL FOREST

Campground	Ranger District	Campfires Allowed in Established Fireplaces?	
Warm Springs	Ft Rock	CLOSED	
Benham Falls Picnic	Ft Rock		No
E. Ft Rock Staging	Ft Rock		No
Abbot Creek	Sisters	De-Funct	
Allen Springs	Sisters	Yes	
Allingham	Sisters	Yes	
Black Pine Springs	Sisters		No
Blue Bay	Sisters	Yes	
Camp Sherman	Sisters	Yes	
Candle Creek	Sisters	Yes	
Cold Spring	Sisters	Yes	
Driftwood	Sisters	Yes	
Gorge	Sisters	Yes	
Graham Corral	Sisters	Yes	
Indian Ford	Sisters		No
Jack Creek	Sisters	Yes	
Jack Lake	Sisters	Yes	
Lava Camp Lake	Sisters	Yes	
Link Creek	Sisters	Yes	
Lower Bridge	Sisters	Yes	
Lower Canyon Creek	Sisters	Yes	
Monty	Sisters		No
Perry South	Sisters	Yes	
Pine Rest	Sisters	Yes	
Pioneer Ford	Sisters	Yes	
Riverside	Sisters	Yes	
Round Lake	Sisters	Yes	
Scout Lake	Sisters	Yes	
Sheep Spring	Sisters	Yes	
Sisters Cow Camp	Sisters		No
Smiling River	Sisters	Yes	
South Shore	Sisters	Yes	
Suttle Lake	Sisters	Yes	
Three Creek Lake	Sisters	Yes	
Three Creek Meadow	Sisters	Yes	
Whispering Pine	Sisters	Yes	

MILLICAN VALLEY OHV TRAIL SYSTEM

BOUNDARY LINE	South	North
Milligan-Camp Staging Area	42° 59' 46.950"	109° 51' 4.3914"
ODDF Play Area	42° 59' 21.8400"	109° 53' 42.8400"
Four Corners Staging Area	42° 59' 28.4100"	109° 54' 27.4100"
Camp Staging Area	42° 59' 33.2200"	109° 56' 27.1800"
Foreman Road Play Area	42° 59' 53.1200"	109° 49' 4.8300"
South Horse Camp Trailhead	42° 59' 53.1200"	109° 56' 27.1800"
South Horse Camp Trailhead	42° 59' 53.1200"	109° 56' 27.1800"
Fort Hood Trailhead	42° 59' 24.8400"	109° 52' 43.2600"
North Horse Camp Trailhead	42° 59' 24.8400"	109° 52' 43.2600"

LEGEND

- OHV Trail System Boundary
- Local Road
- More Difficult Trails
- Most Difficult Trails
- Highway
- Main Road
- Shared-Use Road—Open to licensed and unlicensed vehicles
- Other Road
- Trail Number
- Widowge Between Markers
- Trailhead or Staging Area
- Play Area
- Elevation Contour—Interval: 500 feet
- Land Status
- BLM Administered Lands
- BLM Wilderness Study Area
- U.S. Forest Service
- Bureau of Reclamation
- Private

Scale: 0 1 2 Miles

North Arrow



SEASONS OPEN TO OHV USE ARE:

North Milligan: Open year round for OHV use on designated trails and routes.

North Milligan: Open for OHV use on designated trails and routes from May 1st through November 30th.

South Milligan: Open for OHV use on designated trails and routes from August 1st through November 30th.

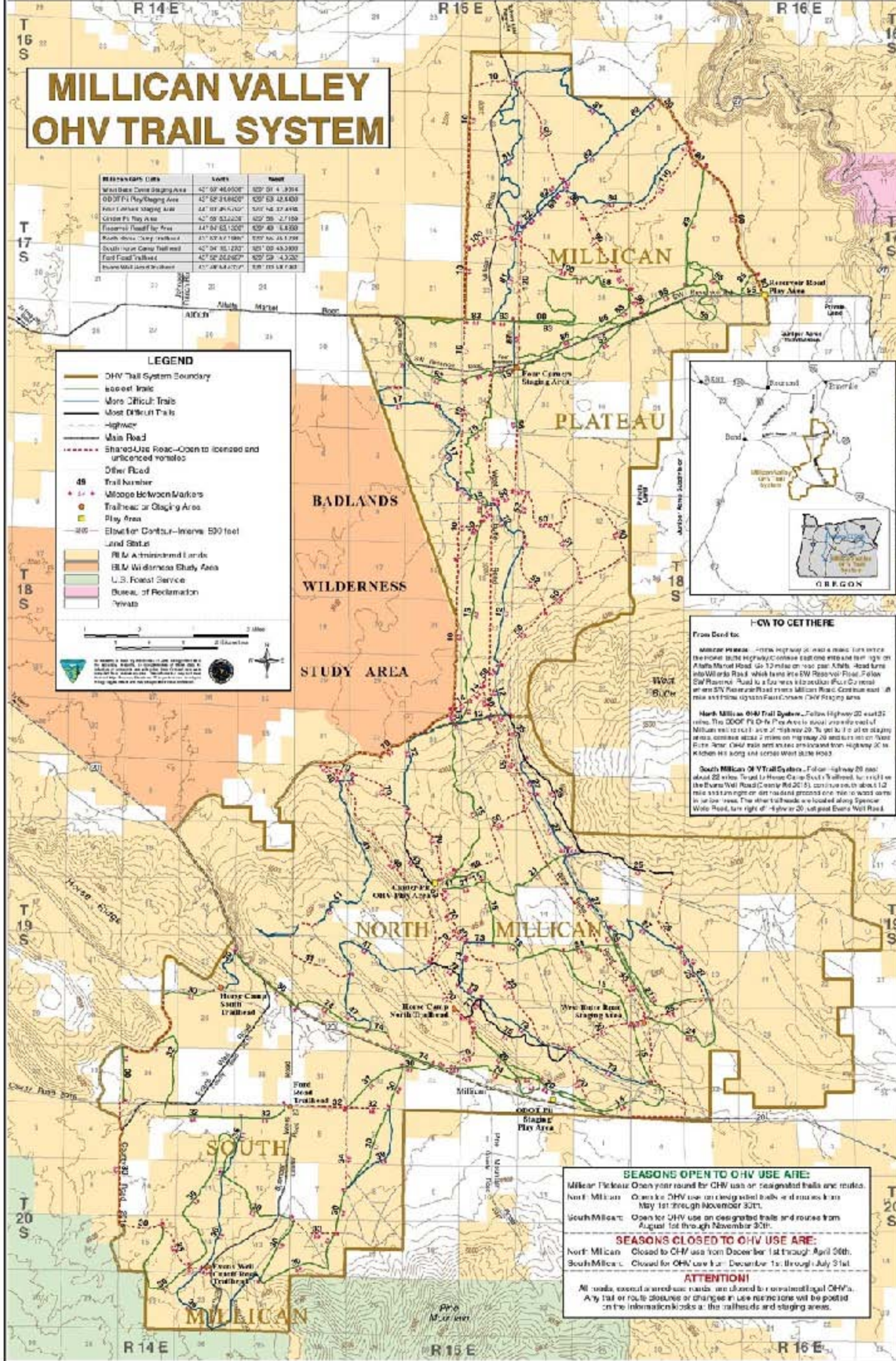
SEASONS CLOSED TO OHV USE ARE:

North Milligan: Closed to OHV use from December 1st through April 30th.

South Milligan: Closed for OHV use from December 1st through July 31st.

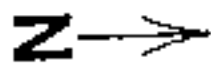
ATTENTION!

All roads, except as noted, are closed to off-road legal OHVs. Any trail or route closure or change in use restrictions will be posted on the information kiosks at the trailheads and staging areas.



ROSLAND OHV PLAY AREA

Not To Scale



Beginner Play Area

ODOT Access

Gate

Kiosk

To Trails

CLOSED

Turnout

Turnout

Toilet

Rosland Road

Gate

Emergency Vehicle Access

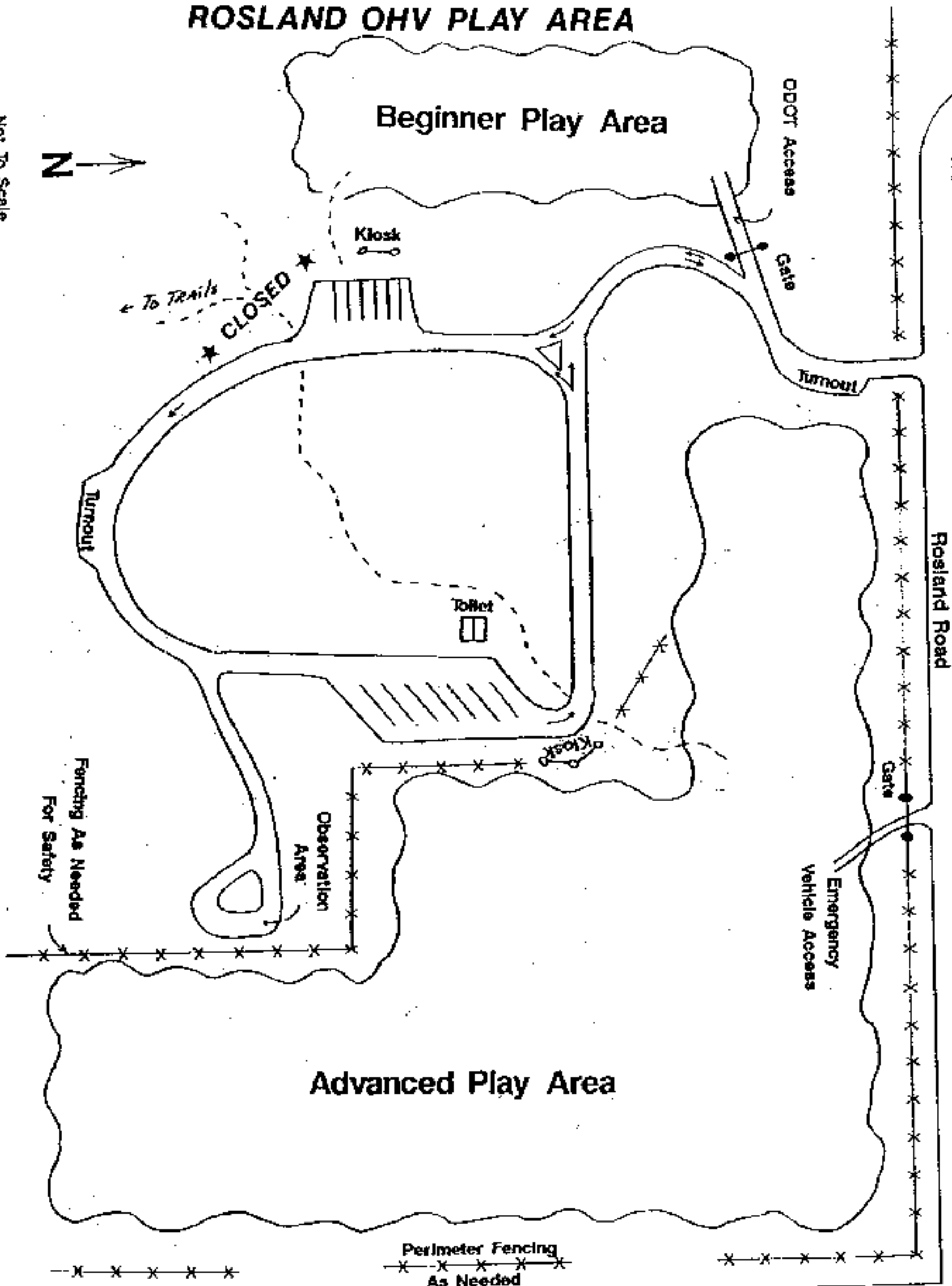
Fencing As Needed For Safety

Observation Area

Advanced Play Area

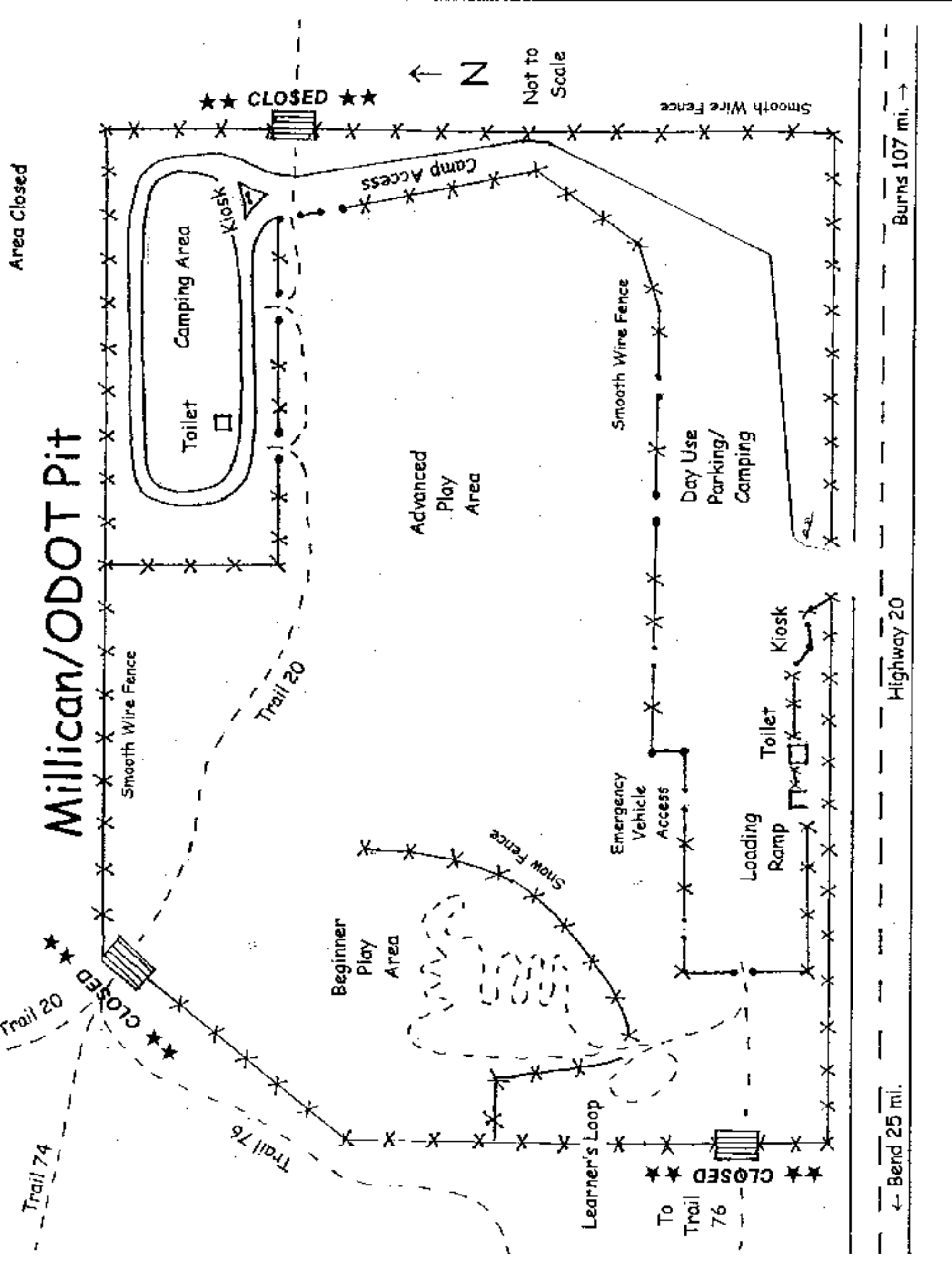
Perimeter Fencing As Needed

Pipeline Road



Millican/ODOT Pit

Area Closed



← Bend 25 mi.

Highway 20

→ Burns 107 mi.

EXHIBIT C, Revision 7-17-2007

Three-digit roads open to traffic:

4630-600 spur South and West of Little Cultus Lake

370 road into Todd Lake off Highway 46, including connecting roads 377, 378 and 380.

Contorta Point Campground access: road 280 off road 60.