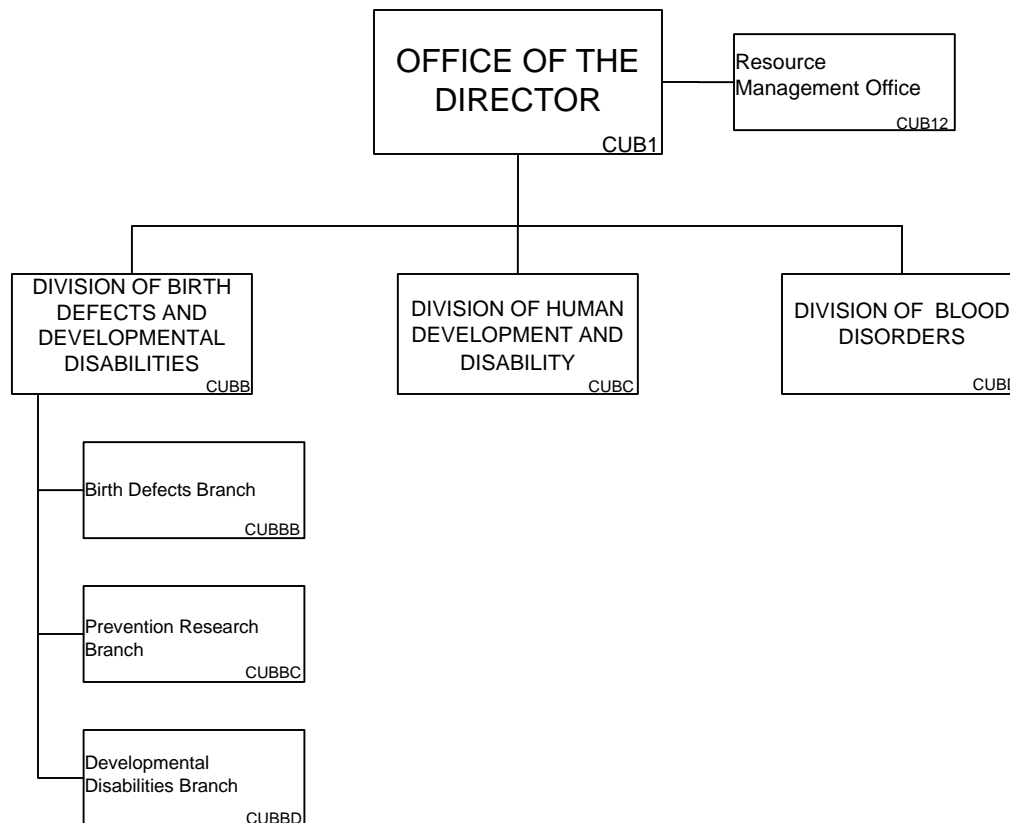


**DEPARTMENT OF HEALTH AND HUMAN SERVICES
CENTERS FOR DISEASE CONTROL AND PREVENTION**

COORDINATING CENTER FOR HEALTH PROMOTION (CU)

NATIONAL CENTER ON BIRTH DEFECTS AND DEVELOPMENTAL DISABILITIES (CUB)



APPROVED 11/15/2006