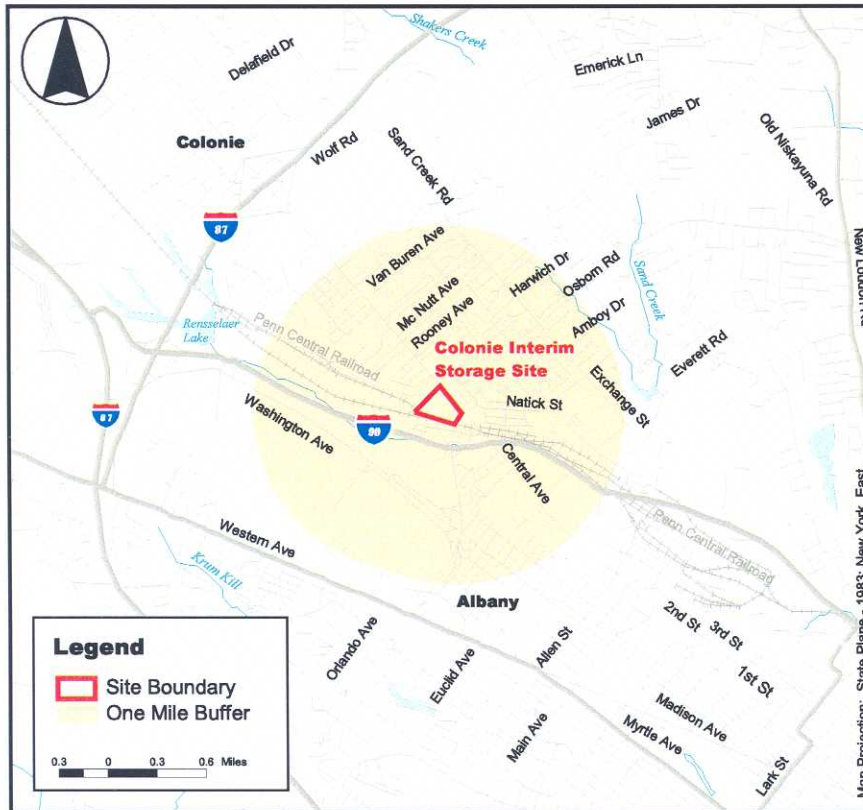


Colonie Interim Storage Site

Albany, New York

EPA Facility ID NY0890137854



Base Map Source: 1995 TIGER/Line Files

Figure 2: Demographics



Albany County, New York

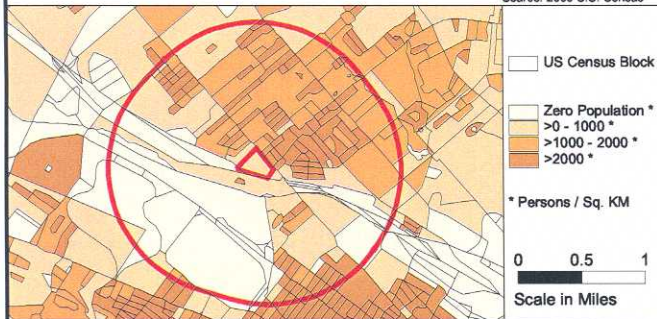
Demographic Statistics Within Area of Concern*

Total Population	10045
White alone	9296
Black alone	376
Am. Indian and Alaska Native alone	16
Asian alone	192
Native Hawaiian and Other Pacific Islander alone	3
Some other race alone	44
Two or More races	122
Hispanic or Latino	150
Children Aged 6 and Younger	710
Adults Aged 65 and Older	2050
Females Aged 15 - 44	2012
Total Housing Units	4548

Demographics Statistics Source: 2000 US Census
*Calculated using an area-proportion spatial analysis technique

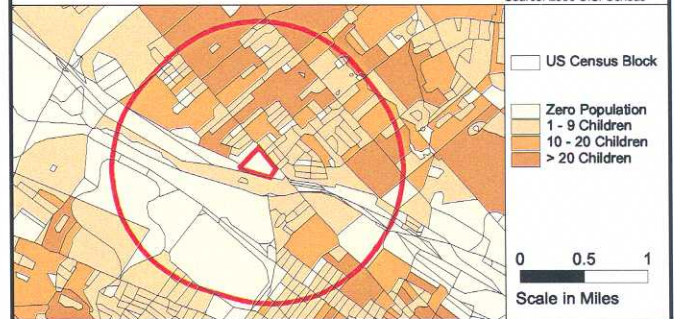
Population Density

Source: 2000 U.S. Census



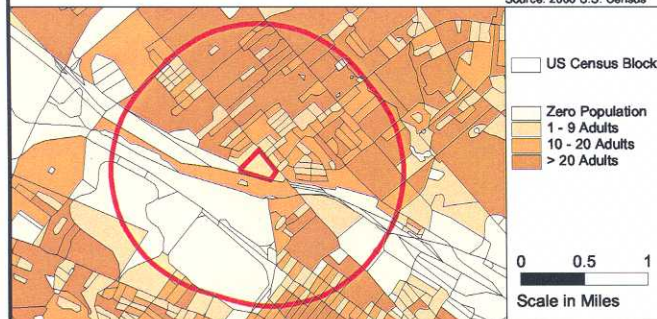
Children 6 Years and Younger

Source: 2000 U.S. Census



Adults 65 Years and Older

Source: 2000 U.S. Census



Females Aged 15 - 44

Source: 2000 U.S. Census

