



HELENA NATIONAL FOREST- HELENA RANGER DISTRICT
SPECIAL ORDER HNF 07-07

EMERGENCY ORDER for AREA CLOSURE

In Order to Provide Public Safety and Firefighter Safety
Gates of the Mountains Wilderness/Helena Ranger District

Pursuant to 36 Code of Federal Regulations 261.50 (a) and (b) restrictions are in effect on the **Helena National Forest**. These restrictions are in addition to those enumerated in Subpart A, Part 261, Title 36 Code of Federal Regulations, and become effective when signed and will remain in effect until rescinded or revoked.

36 CFR 261.53 Special Closures: It is prohibited to go into or be upon any area which is closed for the protection of Public Health and Safety. [Title 36, 261.53(e)].

For the purpose of this order it is prohibited from going into or being upon all National Forest System Lands administered by the Helena National Forest as depicted in the map, Attachment A, hereby made part of this order. The area closure is defined by the Gates of the Mountains Wilderness Boundary T12N, R2W, sections 3, 4, 5, T13N. R1W sections 6, 7, 8, 9, 10, 15, 16, 17, 18, 19, 20, 21, 22, 29, and 30; and T13N, R2W sections 1, 2, 3, 8, 9, 10, 11, 12, 13, 14, 15, 16, 17, 20, 21, 22, 23, 24, 25, 26, 27, 28, 29, 31, 32, 33, 34, 35, and 36; and including Coulter Campground, outside of the wilderness boundary. The Meriwether Day Use area is **NOT** included in the area closure.

The reason for this closure is to provide for public and firefighter safety due to wildfires in the area, therefore the public is prohibited from use of this area.

Exemptions:

Pursuant to Title 36 CFR 261.50(e), the following are exempt from this order:

1. Any person with a written permit authorizing the otherwise prohibited act or omission.
2. Any Federal, State, or local officer, or member of the an organized rescue or firefighting force in the performance of an official duty

Done this 23rd day of July, 2007 at Helena, MT

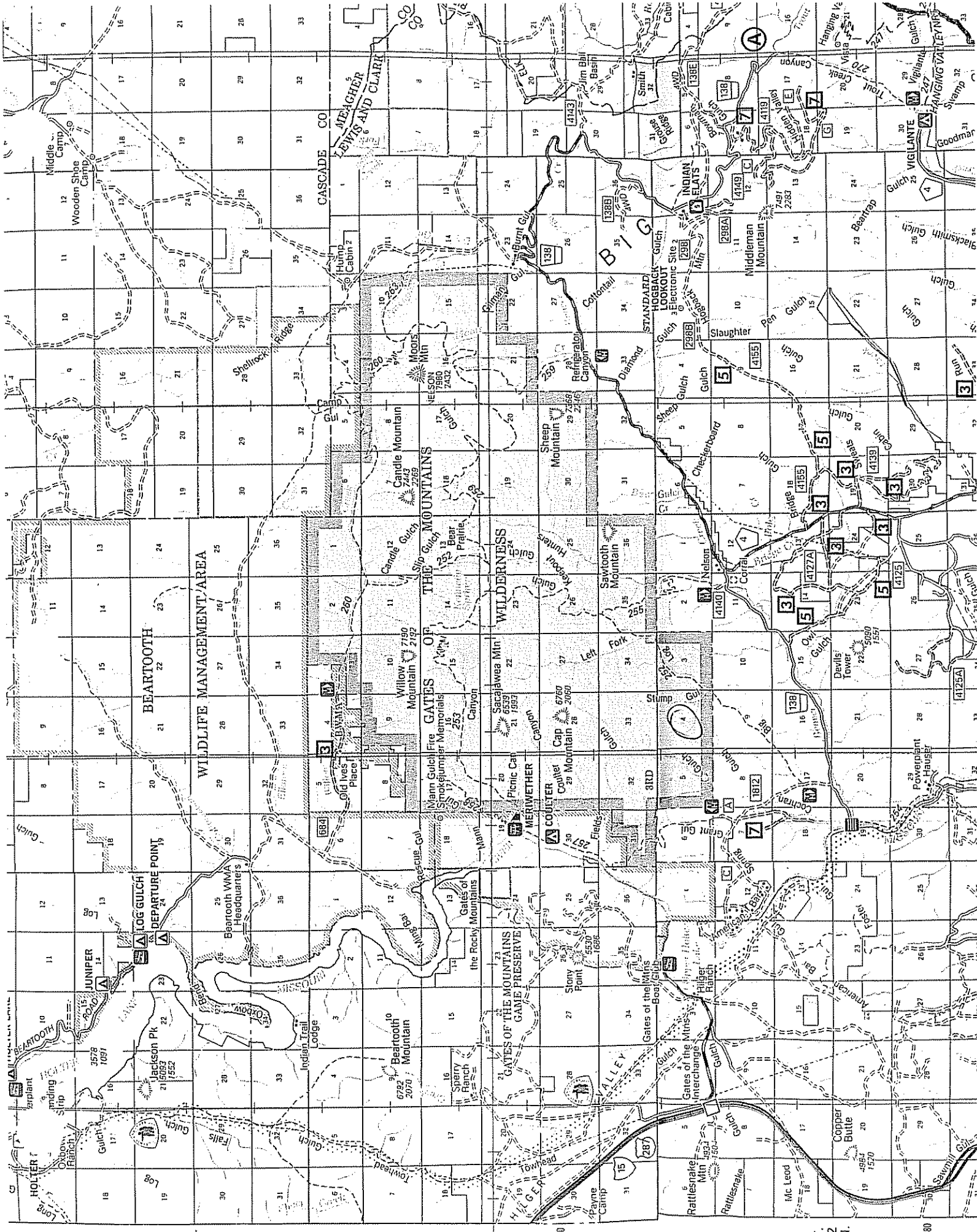

Kevin T. Riordan
Helena National Forest Supervisor

Penalty:

Violations of these Prohibitions are punishable by a fine of not more than \$5000 for an individual or \$10,000 for an organization, or imprisonment of not more than 6 months, or both. [16 U.S.C. 551 and 18 U.S.C. 3559 and 3571].

Notification:

A copy of this order shall be posted as prescribed under 36 CFR 261.51



T. 14 N.
 5700000m RL

T. 13 N.
 46° 52' 30"

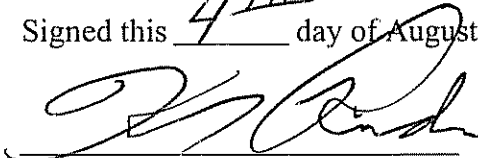
T. 12 N.
 5180

HELENA NATIONAL FOREST
2880 Skyway Drive
Helena, Montana 59602

RESCINDING ORDER

Forest Order HNF-07-07 dated July 23, 2007 and signed by Forest Supervisor Kevin T. Riordan, is hereby rescinded, effective immediately upon signature.

Signed this 4TH day of August, 2007, at Helena, Montana

A handwritten signature in black ink, appearing to read "Kevin T. Riordan", written over a horizontal line.

KEVIN T. RIORDAN
Helena National Forest Supervisor