



SPECIAL ORDER HNF-07-03

## SPECIAL RESTRICTIONS

For Heart Lake, Bighorn Lake, and Parker Lake  
**HELENA NATIONAL FOREST – SCAPEGOAT WILDERNESS**  
*REGION ONE*

Pursuant to 36 Code of Federal Regulations 261.50 (a) and (b) the **following acts are in effect on the following lakeshores in National Forest Wilderness on the Helena National Forest.** These restrictions are in addition to those enumerated in Subpart A, Part 261, Title 36 Code of Federal Regulations and become effective upon date of signature and will remain in effect until rescinded or revoked.

- 1. Containment of livestock (horses, mules, llamas, and/or goats, etc.) is prohibited within the following lakeshores listed below. Containment is defined as tying, picketing, tethering, or couching animals to trees or rails by any means available such as rope, nylon, twine, or plastic straps. [36 CFR 261.57(a)]**

**Heart Lake:** Containment of livestock is prohibited within the area between Forest Service System Trail #424 and the shoreline within 200 feet not bordered by Trail #424. See attached map.

**Bighorn Lake:** Containment of livestock is prohibited within the area 200 feet around the lake shore. See attached map.

**Parker Lake:** Containment of livestock is prohibited between Forest Service System Trail #481 and the shoreline within 200 feet not bordered by Trail #481. See attached map.

Pursuant to 36 CFR 261.50(e), the following persons are exempt from this order:

1. Persons with a written permit that specifically authorizes the otherwise prohibited act or omission.
2. Any Federal, State, or local officer, or member of an organized rescue or firefighting force in the performance of an official duty.
3. All land within a city boundary is exempted.

Signed this 11<sup>TH</sup> day of JUNE, 2007 at Lincoln, Montana.

KEVIN T. RIORDAN  
Forest Supervisor

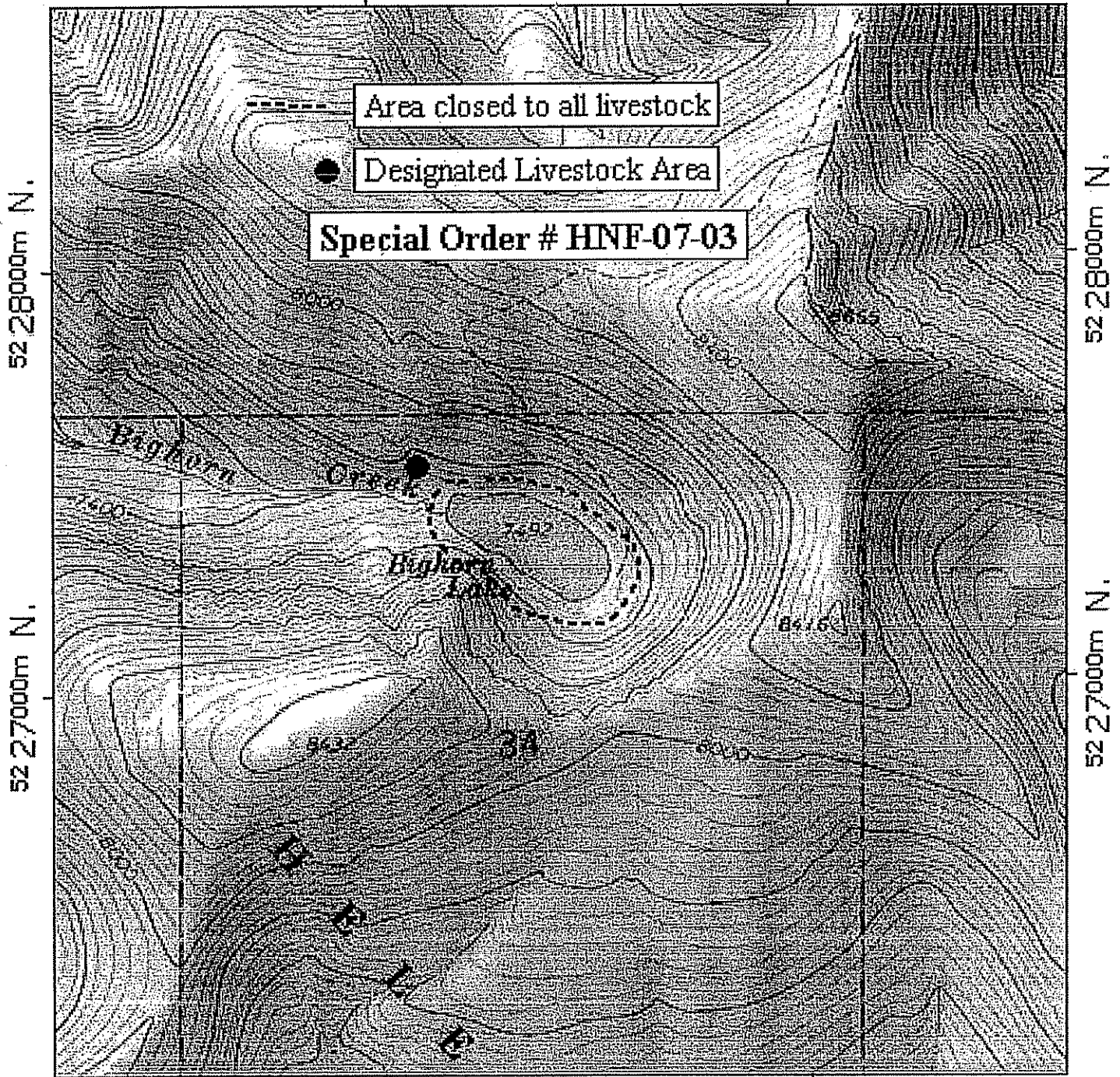
Violations of these prohibitions are punishable by a fine of not more than \$5000 for an individual or \$10,000 for an organization, or imprisonment of not more than 6 months, or both. (16 U.S.C. 551 and 18 U.S.C. 3559 and 3571).

# BIGHORN LAKE RESTRICTIONS

6/8/07

378000m E.

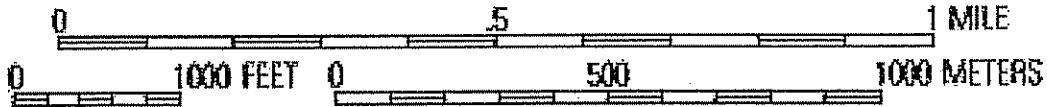
WGS84 Zone 12T 379000m E.



378000m E.

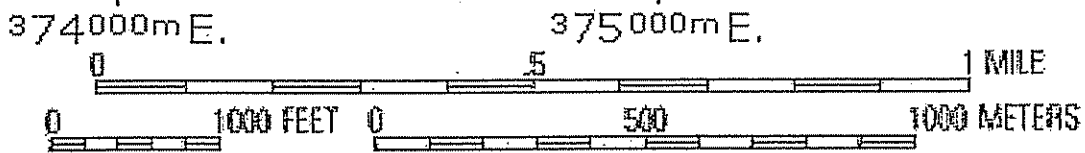
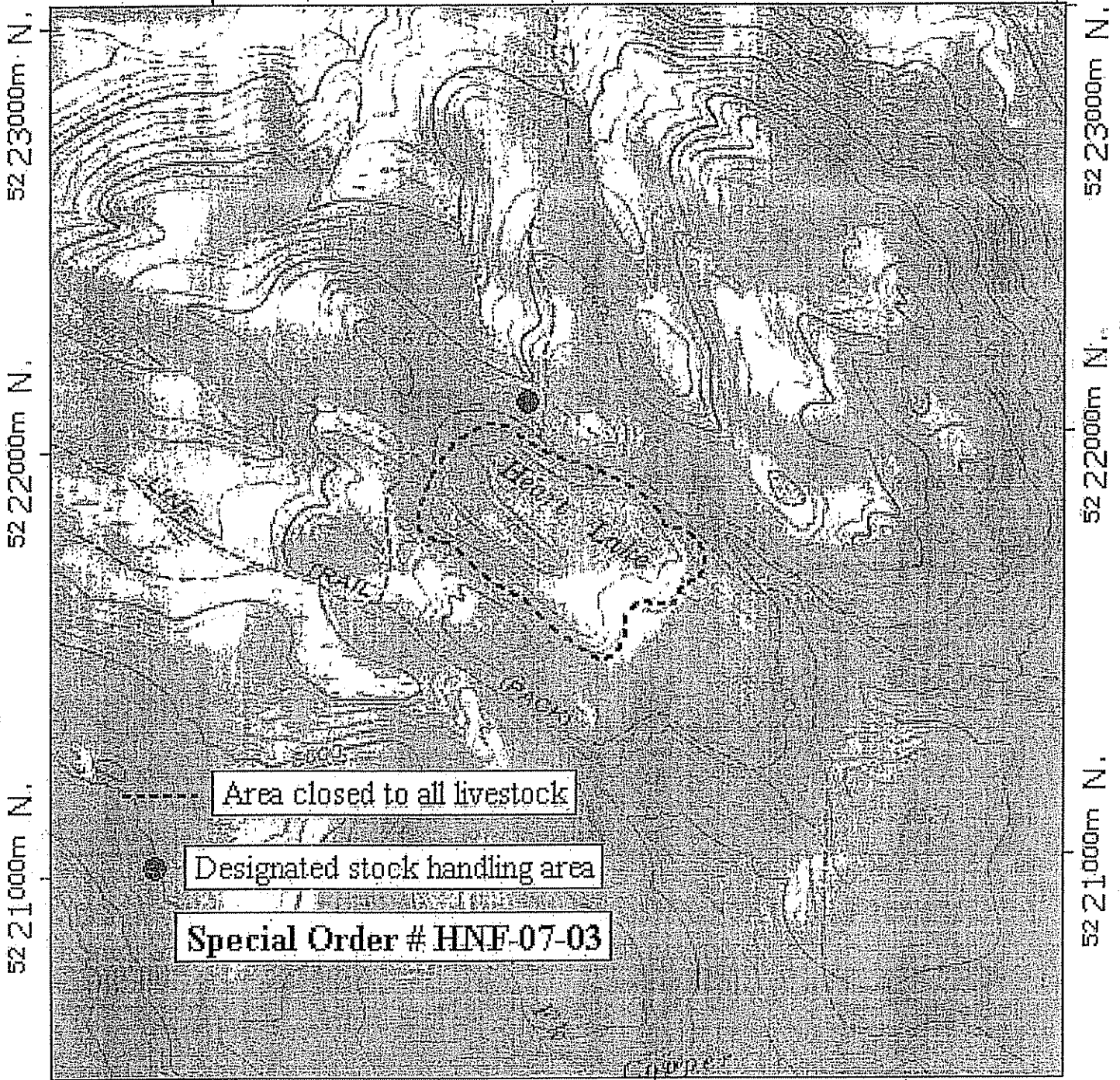
WGS84 Zone 12T 379000m E.

TN\* / MN  
15°



Printed from TOPO! ©2000 National Geographic Holdings (www.topo.com)

Heart L. Restrictions, Special Order # HNF-07-03  
374000m E. WGS84 Zone 12T 376000m E.



TN / MN  
15°

Printed from TOPO! ©2000 National Geographic Holdings (www.topo.com)

PARKER LAKE RESTRICTIONS

6/8/07

367000m E.

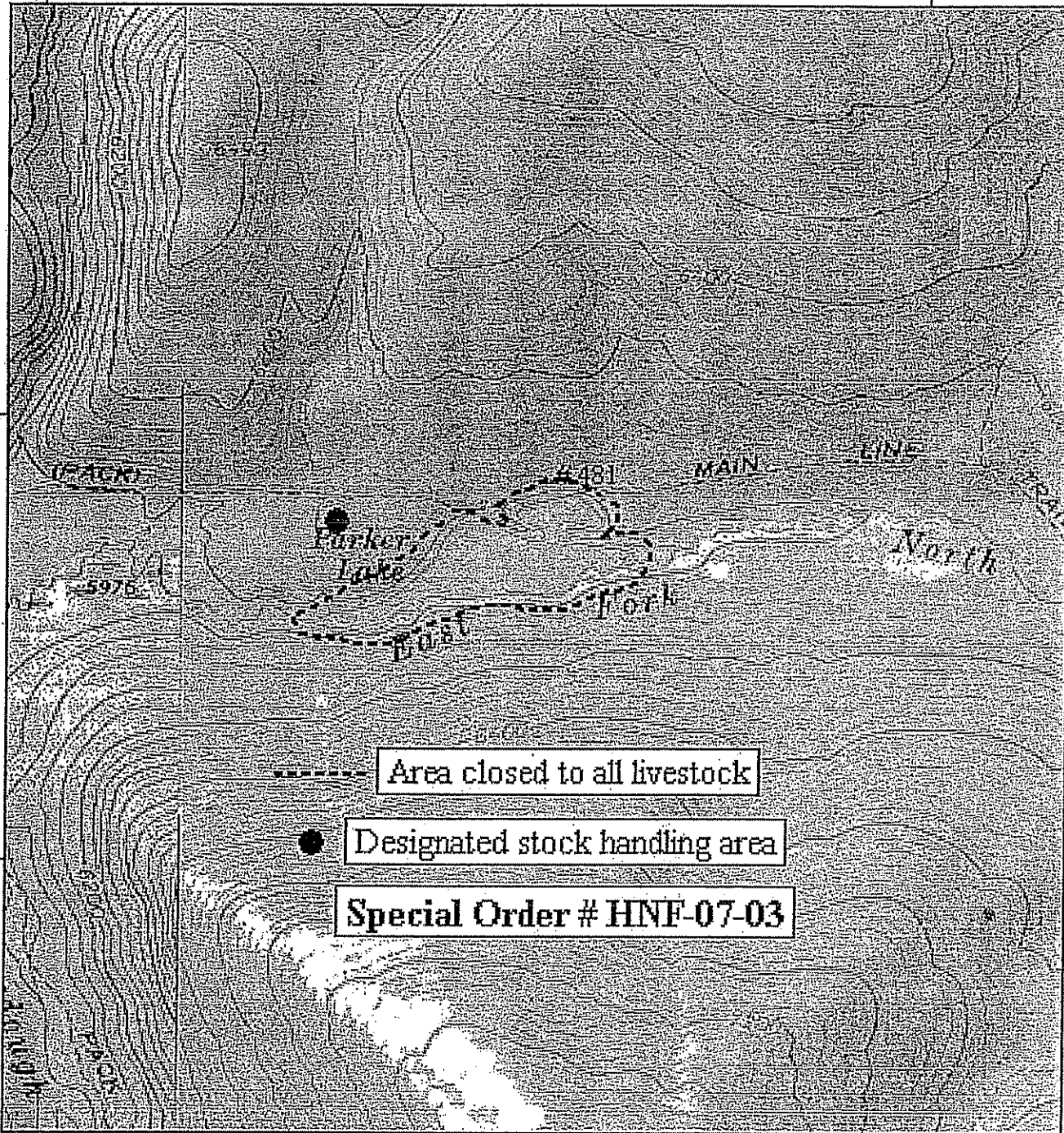
WGS84 Zone 12T 369000m E.

52 24000m N.

52 24000m N.

52 23000m N.

52 23000m N.



367000m E.

WGS84 Zone 12T 369000m E.

TN \* /MIN  
15°



Printed from TOPO! ©2000 National Geographic Holdings (www.topo.com)