

Welcome to the King County Fairgrounds

SE 449th St

SE 451st St

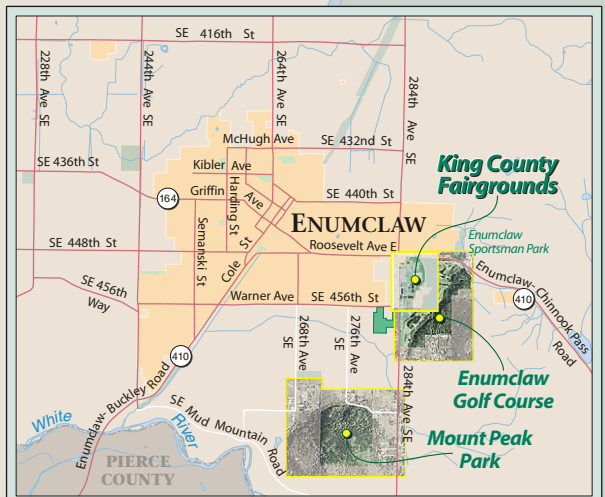
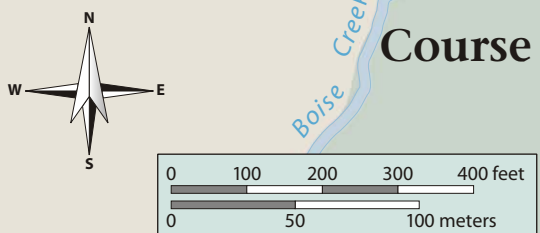
SE 456th St

South Parking Lot



Legend

- Baseball field
- Football field
- Play area
- Picnic shelter/barbecue
- Point of interest
- Tennis court
- Restrooms
- Shower
- Public telephone
- Parking – gravel lot
- Parking – grass-covered lot
- RV parking
- Disability access
- Road or driveway – paved
- Road or driveway – unpaved
- Gates
- Fence
- Fairgrounds boundary
- King County park boundary
- Mowed grass
- Athletic/activity area – grass-covered
- Athletic/activity area – bare ground, dirt, or other non-paved
- Trees
- City of Enumclaw
- Other King County park land (Enumclaw Golf Course)
- Unincorporated King County



King County Fairgrounds Vicinity

Quick Facts

King County Fairgrounds, 45224 284th Avenue Southeast, Enumclaw, WA
Hours 8:00 AM to 5:00 PM Monday through Friday
Main Office 206-296-8888 or 1-800-325-6165, ext. 6-8888
Fax 206-296-8891
Reservations 206-296-8892 or 1-800-325-6165, ext. 6-8892
Internet Address www.metrokc.gov/parks/fair

Fairground Facilities, Total Area of Fairgrounds=72 acres

Arenas	Area (square feet)	Other	Quantity
Arena A	10,000	Administration Office	1
Arena B	10,000	Ballfield	1
Covered Arena	15,000	Football Field	1
Rodeo Arena	30,580	Group Campsite	1
		Gymnasium	1
		Maintenance Office	1
		Open Playfield	1
		Parking Lots	4
		Picnic Area	1
		Play Area	1
		Public Telephones	7
		Restrooms	6
		Showers	2
		Stadium	1
		Tennis Courts	2
		Wading Pool	1
Barns			
Dog Barn	2,025		
Horse Barn	14,592		
Livestock Barn	14,592		
Swine Barn	1,980		
Rabbit Barn	3,360		
Exhibit Buildings			
Exhibition Hall	18,200		
Activity Hall	12,600		
Fieldhouse	7,800		

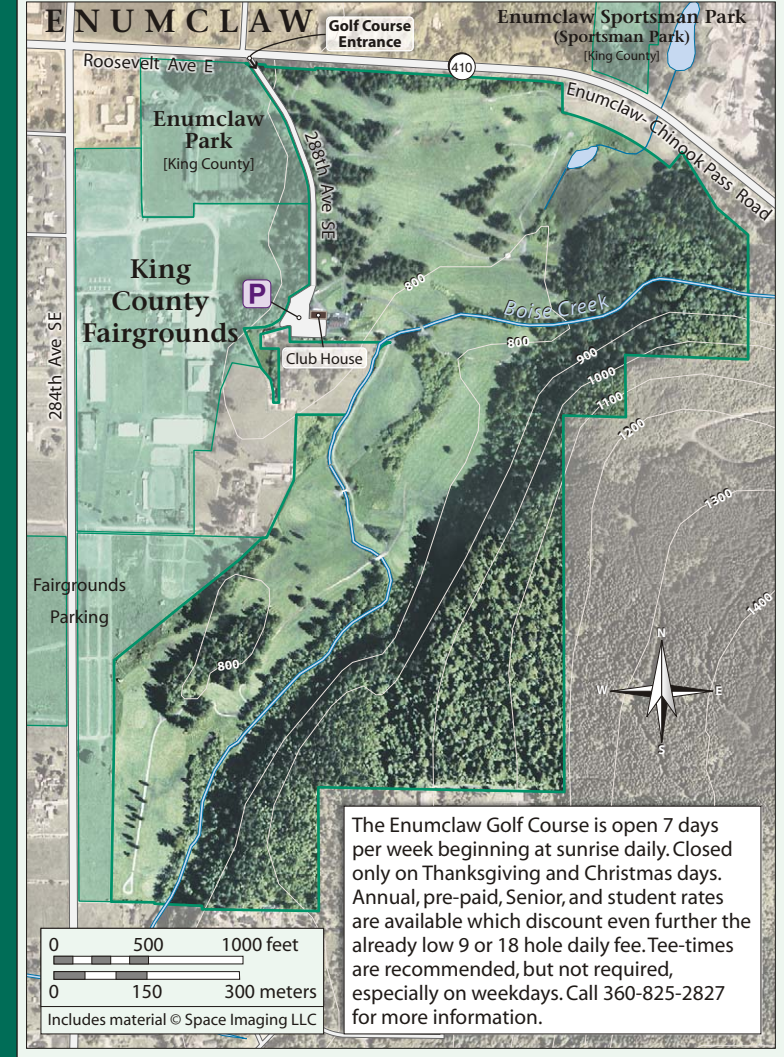
How to Get to the Fairgrounds

- From the North**
From Interstate 405
 Take the Maple Valley Highway (State Route 169) south through Maple Valley and Black Diamond to Enumclaw. At Enumclaw follow the signs to the Fairgrounds.
- From Interstate 5**
 Take State Route 18 east to Auburn, and then State Route 164 east to Enumclaw. At Enumclaw follow the signs to the Fairgrounds.
- From the South**
From State Route 167
 Take State Route 410 east to 284th Avenue SE in Enumclaw and turn right.

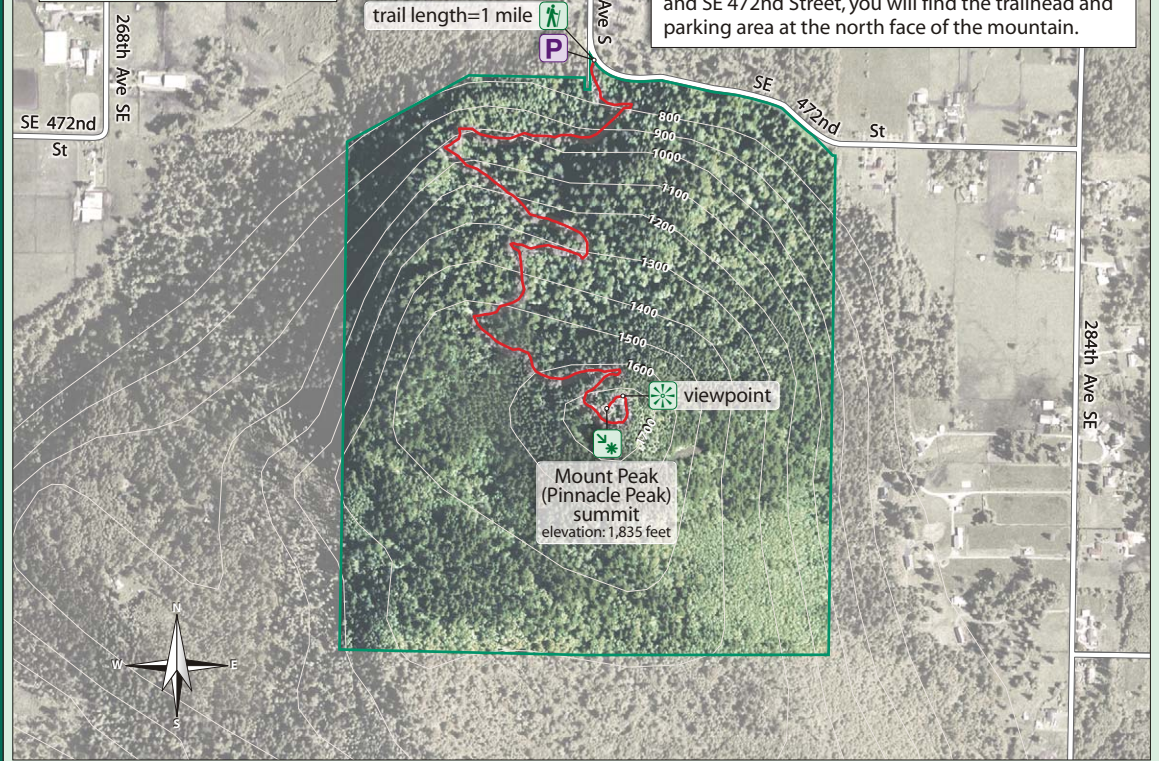
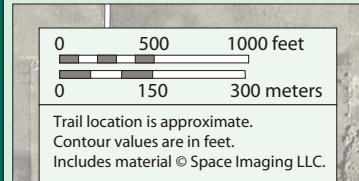


See also the vicinity map at left.

Enumclaw Golf Course



The Enumclaw Golf Course is open 7 days per week beginning at sunrise daily. Closed only on Thanksgiving and Christmas days. Annual, pre-paid, Senior, and student rates are available which discount even further the already low 9 or 18 hole daily fee. Tee-times are recommended, but not required, especially on weekdays. Call 360-825-2827 for more information.



Mount Peak Park & Trail (Pinnacle Peak)