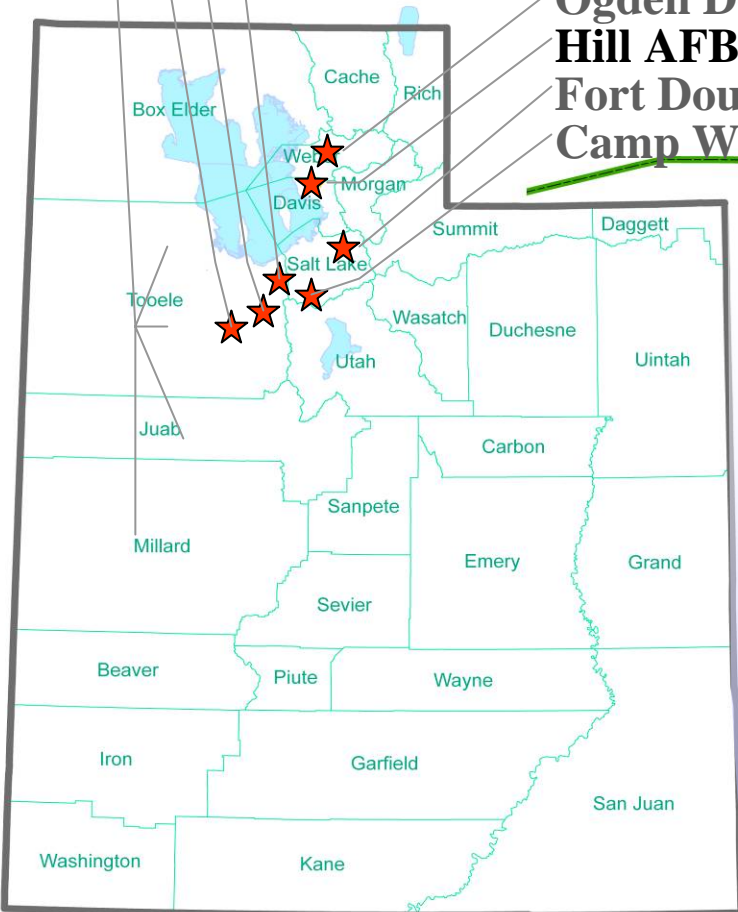


A Study of the Association Between Cancer Rates and TCE Ground Water Contamination in Communities Surrounding Hill Air Force Base, Utah from 1973 - 2001



West Desert Test Range
Dugway Proving Ground
Deseret Chemical Depot
Tooele Army Depot

Ogden Depot
Hill AFB
Fort Douglas
Camp Williams



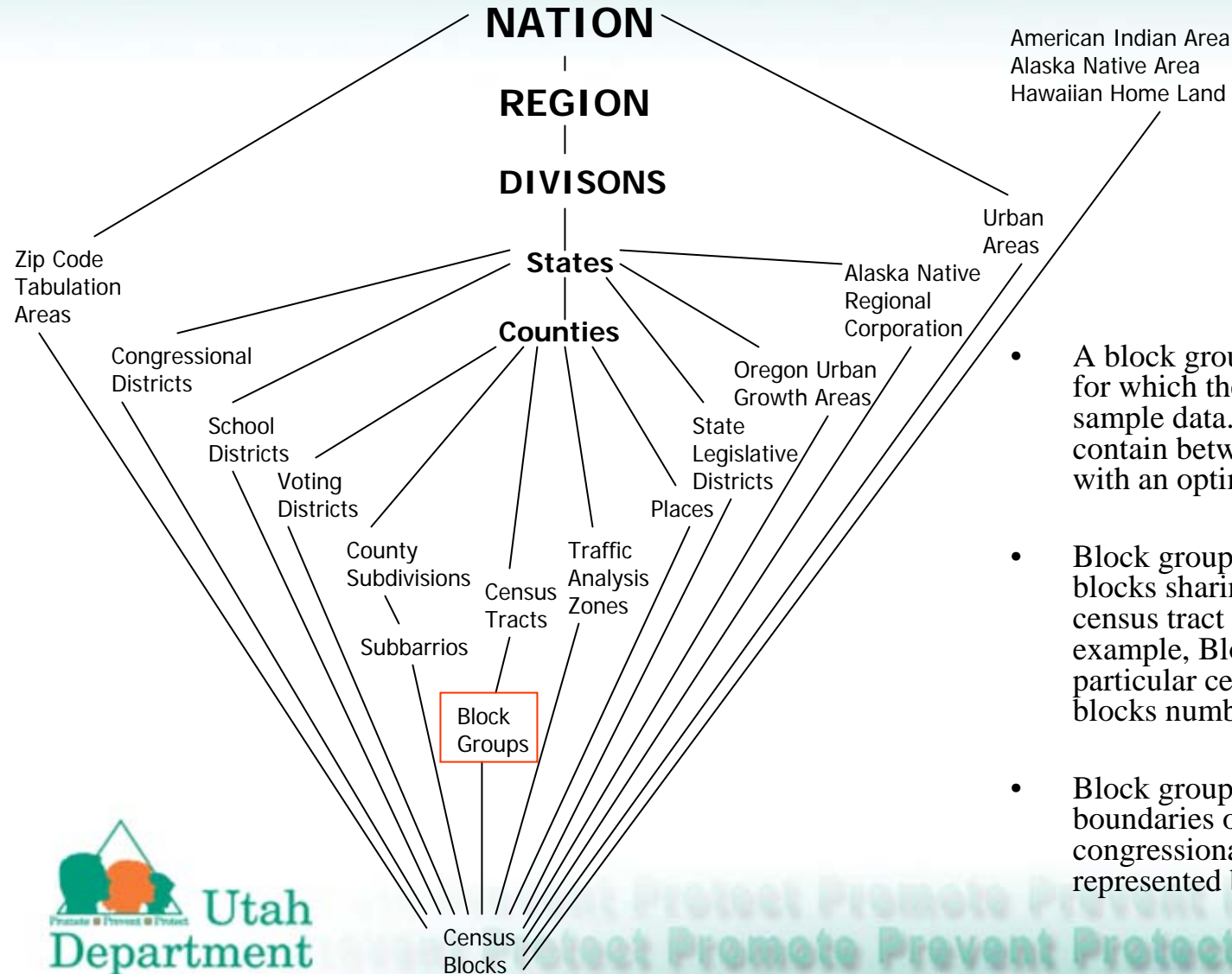
Great Salt Lake

Davis County



WASATCH MOUNTAIN RANGE

Geospatial Reference Data



- A block group is smallest geographic unit for which the Census Bureau tabulates sample data. Block groups generally contain between 300 and 3,000 people, with an optimum size of 1,500 people.
- Block groups are defined as that set of blocks sharing the same first digit within a census tract or non-tract area. For example, Block Group '3' within a particular census tract would include any blocks numbered between 300 and 399.
- Block groups may cross and be split by the boundaries of MCD's, places, and congressional districts. They are represented by a one digit numeric code.

Geospatial Reference Data

- U.S. 2000 TIGRE Census Block Group shape file for the State of Utah
 - Feature Type: Polygons
 - Projection: NAD 1983 UTM Zone 12N
 - Reference Key: Standard Federal Identifier
 - State FIPS code (ss)
 - County FIPS code (ccc)
 - Census tract enumeration code (tttt.tt)
 - Census block group enumeration code (b)

Population Data

- Data from commercial source
- Census Years: 1970, 1980, 1990, 2000
- Structured into Sex x 5-year age groups
(M 0-4, F 0-4, M 5-9, F 5-9 ... M 85-older, F 85-older)
- Reapportioned to 2000 Census Block Groups
- Indexed by the STFID code
- Intercensal estimates

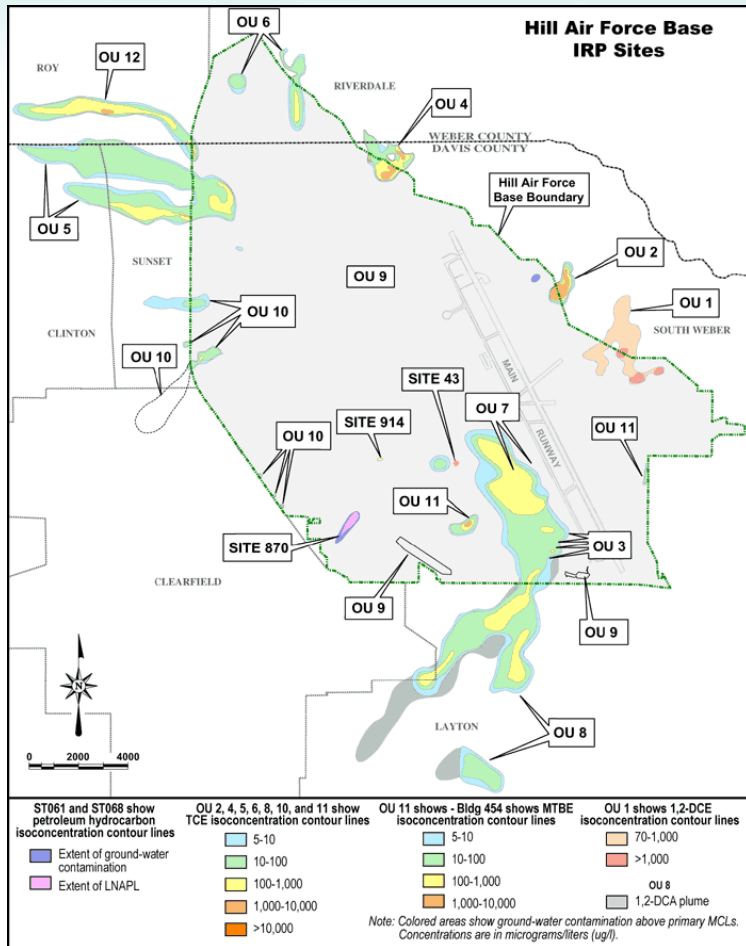


Socio-Economic Status Indicator

- Data from same commercial source
- Data only available for 1990 and 2000 census block groups
- Indexed by the STFID code
- Indicator Used: Median Household Income
- Alternatives Considered
 - House Value / Type / Age
 - Household Size / House Room Count
 - Education



Exposure Data

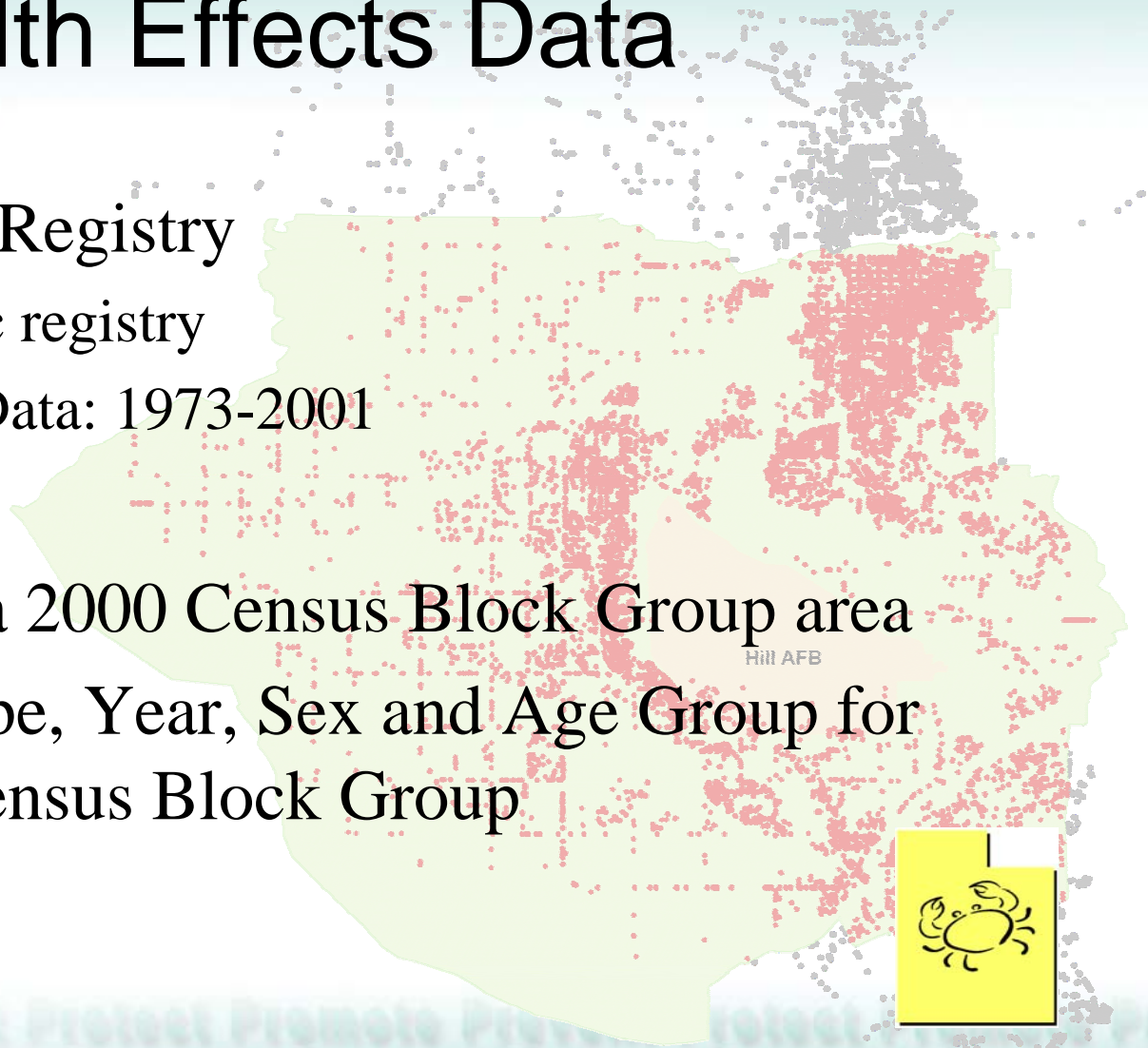


- Graphic plume boundaries
 - 5-10 ug/l TCE
 - 2001-2002 sampling period
- Limited pathway data
 - Indoor air intrusion
 - Plant sampling



Health Effects Data

- Utah Cancer Registry
 - Case-centric registry
 - Electronic Data: 1973-2001
- Geocoded
- Assigned to a 2000 Census Block Group area
- Count by Type, Year, Sex and Age Group for each 2000 Census Block Group

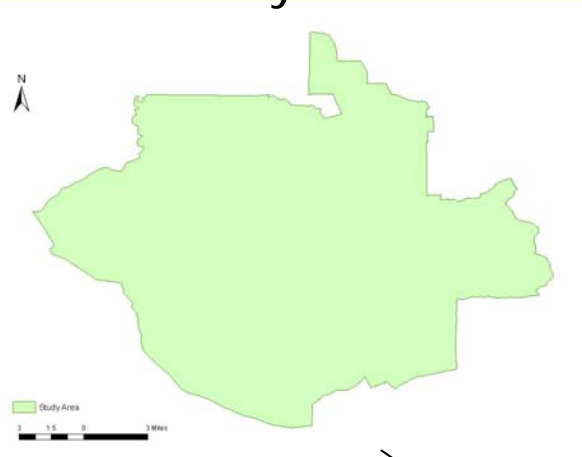


Hazard

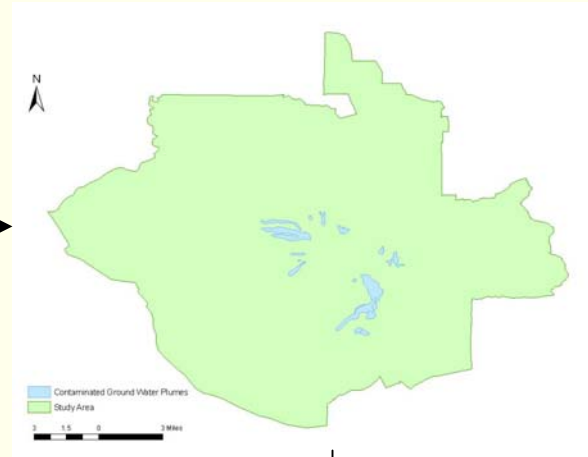
Exposure

Health Effect

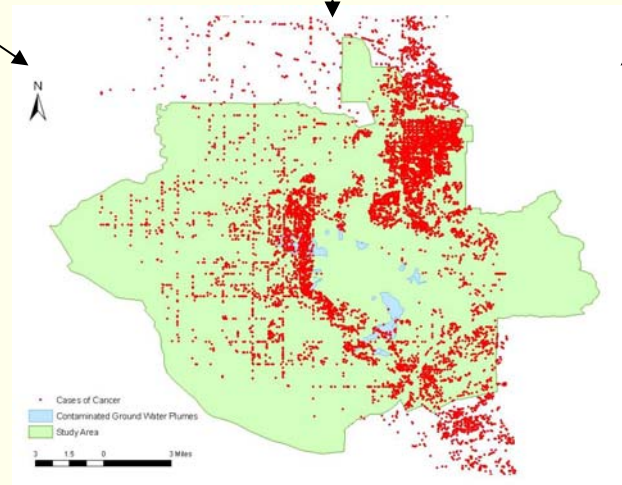
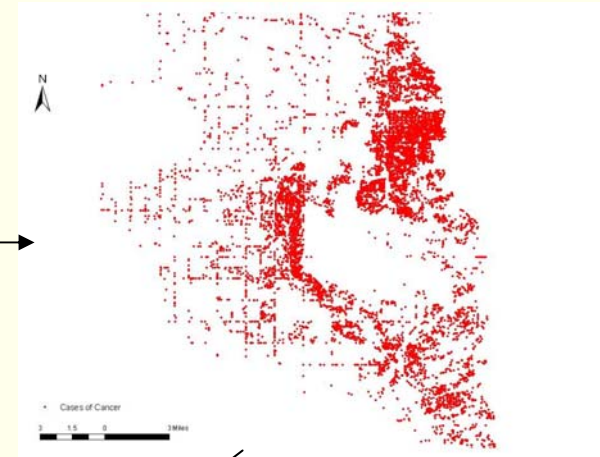
Study Area



Contaminated Area



Disease



Linking databases can be a first step in identifying environmental hazards that may be related to human health effects