

THE FOREST OUTREACH NETWORK

Educating to Conserve King County's Private Forests



King County is losing its private forestlands to development. As these forests disappear, the County loses a natural resource essential to maintaining the region's quality of life. Forests are more than just beautiful landscapes; they also provide economic benefits for every taxpayer. It is estimated that one acre of forestland saves roughly \$21,000 in stormwater retention costs and \$150 annually in costs associated with air pollution removal.

Forests...

- absorb surface water that would otherwise cause flooding or require expensive drainage systems
- moderate extremes in temperature and help maintain clean air
- provide habitat for wildlife
- offer recreational opportunities
- provide a local source of wood products.

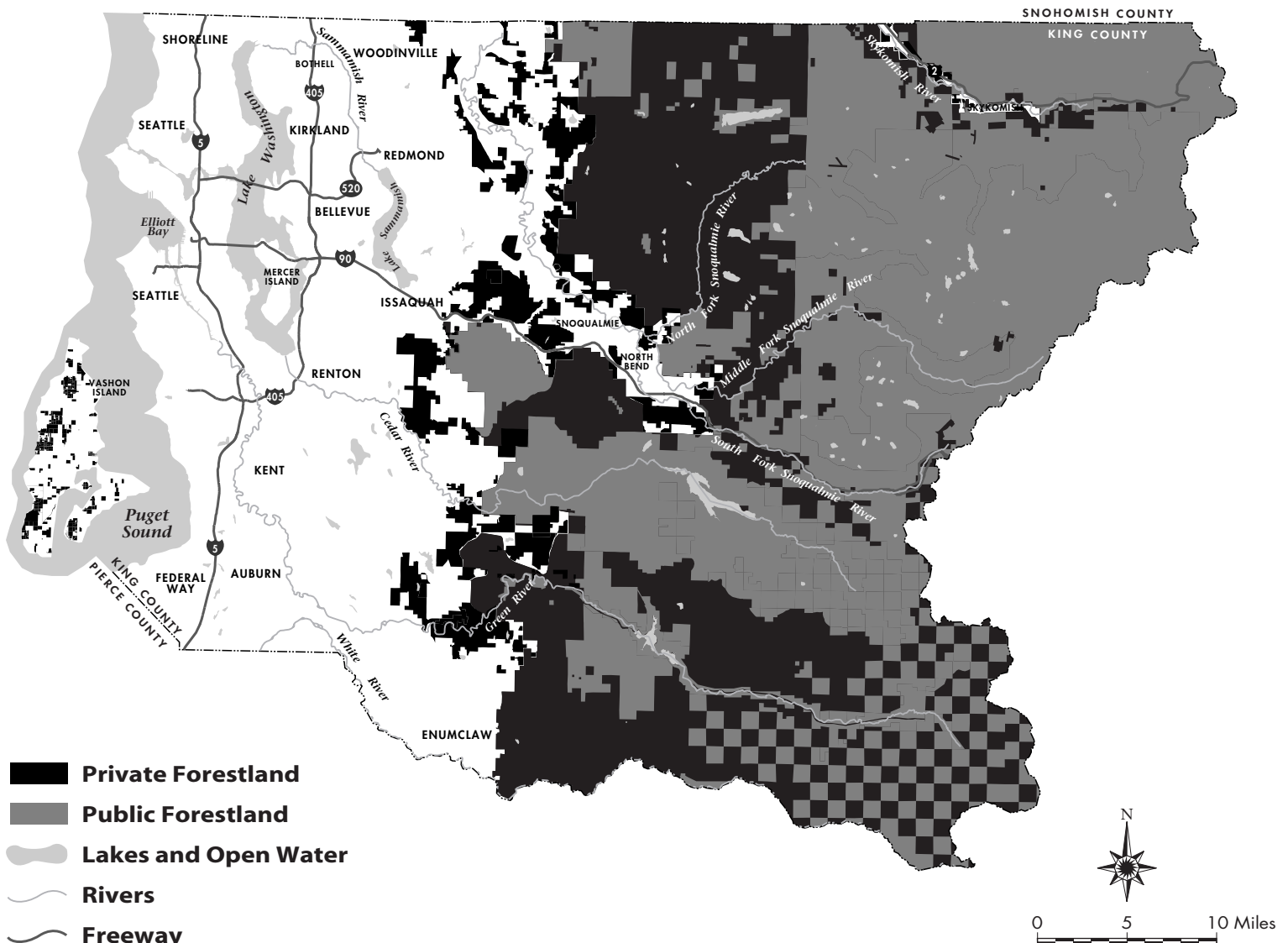
Forestlands, including those managed for the production of timber, are an invaluable asset to the

people of King County. There are 857,000 acres of forestland in King County, but over 300,000 acres, or 35%, are in private ownership. Almost all of this private land could be converted to development.

The Forest Outreach Network represents a variety of organizations and agencies involved with the conservation of private forests in King County. These groups are working together to engage the public in an effort to save these forests on the edge of our cities. The list on the back of this page provides an introduction to the groups involved in the Network.

You can help save the forestland in King County! The Forest Outreach Network is developing educational materials about the importance of conserving productive forests. To get involved, be put on the Network mailing list, or host a presentation by a Network representative, please contact Benj Wadsworth, King County Forestry Program, at 206-296-7805, benj.wadsworth@metrokc.gov, or contact one of the groups listed on the back of this page.

Forestlands in King County





ORGANIZATIONS AND AGENCIES INVOLVED



Cascade Land Conservancy

Mission: To promote our region's environment by encouraging the voluntary donation or dedication of natural and open space lands in urban, rural and forest landscapes across King, Pierce, and Snohomish counties. The Cascade Land Conservancy promotes sound stewardship and land conservation principles. Contacts: Doug Mason, King County Area Manager or Charlie Raines, Coordinator of the Foothills Forest Conservation Initiative, 206-292-5907 ext. 106.

EcoFor

Mission: To help private landowners and organizations develop and implement forest management practices that improve ecological outcomes while maintaining revenues by developing markets for ecological services, jointly managing for multiple outputs, and facilitating new forms of transactions. Contact: Gordon Smith, 206-784-0209, gsmith@ecofor.org

Environmental Home Center

Mission: To supply customers with building materials and interiors that provide the highest possible value at an affordable price. EHC does this by exceeding customers' expectations at all levels of interaction and incorporating sustainable values and practices in all aspects of the operation. Contact: Matt Freeman-Gleason, 206-682-7332, mfg@enviresource.com

Friends of Rock Creek Valley

Mission: To increase community awareness of what is happening in the Rock Creek valley; to provide an organization and voice for the valley; to seek funding and other avenues for purchase, maintenance and enhancement of sensitive areas; and to promote community involvement in activities impacting Rock Creek. Contact: joan burlingame, 425-432-3973, joan@Idyllarbor.com

King County Forestry Program

Mission: To retain King County's forestland for its environmental, social and economic benefits. The Forestry Program provides education, technical assistance, and economic incentives to retain the forest resources of King County. Contact: Kathy Creahan, 206-205-5621, kathy.creahan@metrokc.gov

King County Parks

Mission: To enhance quality of life and strengthen communities through parks, natural areas, recreation programs, environmentally sound land management and partnerships. Contact: Connie L. Blumen, 206-296-4252, connie.blumen@metrokc.gov

King County Rural Forest Commission

Mission: To conserve the rural forest land base so that it retains its public and private benefits and to facilitate the business or activity of appropriately scaled forestry for the long term. Contact: Jean Bouffard, 252-630-8433, Bouffardj@nventure.com

Livable Communities Coalition

Mission: To advocate with a common voice for healthy, equitable, and sustainable communities in the Central Puget Sound Region. Livable Communities Coalition is a broad-based coalition of neighborhood, affordable housing, transportation, land use and environmental advocates dedicated to addressing the many complex and interrelated issues facing our region. Contact: Amanda McCloskey, 206-343-3074, lcc@1000friends.org

Mountains-to-Sound Greenway Trust

Mission: To protect and enhance scenic beauty, recreational opportunities, wildlife habitat, historic communities, working farms and forests, and healthy economies in a multi-purpose Greenway along Interstate 90 from the shores of Puget Sound over the Cascade Mountains to the Kittitas Valley foothills; and to help make this human and natural heritage visible and accessible to all people. Contact: Nancy Keith, 206-382-5565, nancy.keith@tpl.org

Northwest Natural Resources Group

Mission: To promote market-based conservation strategies that encourage sustainable forestry and provide market opportunities for ecosystem-based forest management. Contact: Larry Nussbaum, 360-379-9421, larry@nnrg.org

Pacific Forest Trust

Mission: To enhance, restore, and preserve the private, productive forests of the Pacific Northwest. Contact: David Warren, 206-292-4747, dwarren@pacificforest.org

University of Washington, College of Forest Resources

Mission: To generate and disseminate knowledge for the stewardship of natural and managed environments and the use of their products and services through teaching, research, and professional and public outreach. Contact: Gordon Bradley, 206-685-0881, gbradley@u.washington.edu

Washington Environmental Council

Mission: To protect the unique environment and natural heritage of Washington State for future generations. WEC is a statewide coalition of 90 member groups and 3000 individuals striving to protect our forests, wildlife and fish, conserve our water resources, manage growth, and prevent pollution. To reach these goals, WEC advocates for the environment at the state legislature, develops and analyzes state environmental policy, educates the public, and takes legal action. Contact: Becky Kelley, 206-622-8103, becky@wecprotects.org

Washington State University Cooperative Extension King County, Agriculture and Natural Resources

Mission: To provide research based information and knowledge on forestry to the public through classes, workshops, public outreach and publications. Contact: Stephen Sax, 206-205-3132, steve.sax@metrokc.gov

Washington State Department of Natural Resources, South Puget Sound Region

Mission: To manage over 70,000 acres of state trust lands in King County including working forests and Natural Resource Conservation Areas; to ensure compliance with the Forest Practices Act on non-federal land; to provide fire protection on forestlands; and to partner in forestland protection efforts such as the Mountains to Sound Greenway. Contact: Doug McClelland, 360-825-1631, doug.mcclelland@wadnr.gov

1000 Friends of Washington

Mission: To protect Washington's open spaces, farms, forests and watersheds while making our towns and cities better places to live. Contact: Tim Trohimovich, 206-343-0681, tim@1000friends.org

Information here is available in alternate formats upon request.
Call: Benj Wadsworth at 206-296-7805. TTY: 1-800-833-6388