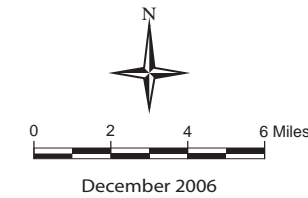


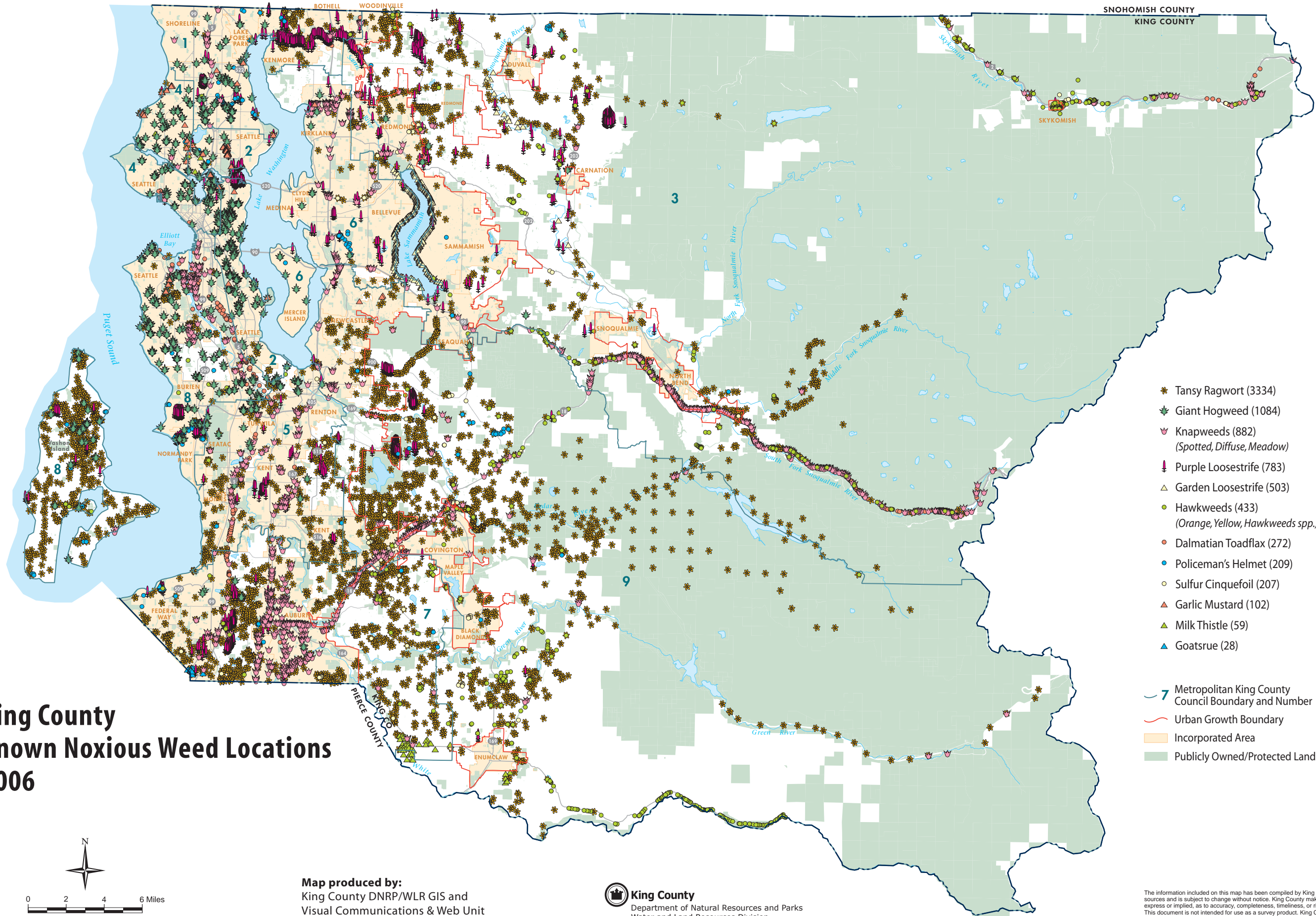
# King County Known Noxious Weed Locations 2006



Map produced by:  
King County DNRP/WLR GIS and  
Visual Communications & Web Unit  
0612noWEEDmap06.ai wgab

**King County**  
Department of Natural Resources and Parks  
Water and Land Resources Division  
**Noxious Weed Control Program**

- Tansy Ragwort (3334)
  - Giant Hogweed (1084)
  - Knapweeds (882)  
*(Spotted, Diffuse, Meadow)*
  - Purple Loosestrife (783)
  - Garden Loosestrife (503)
  - Hawkweeds (433)  
*(Orange, Yellow, Hawkweeds spp.)*
  - Dalmatian Toadflax (272)
  - Policeman's Helmet (209)
  - Sulfur Cinquefoil (207)
  - Garlic Mustard (102)
  - Milk Thistle (59)
  - Goatsrue (28)
- Metropolitan King County Council Boundary and Number
  - Urban Growth Boundary
  - Incorporated Area
  - Publicly Owned/Protected Land



The information included on this map has been compiled by King County staff from a variety of sources and is subject to change without notice. King County makes no representations or warranties, express or implied, as to accuracy, completeness, timeliness, or rights to the use of such information. This document is not intended for use as a survey product. King County shall not be liable for any general, special, indirect, incidental, or consequential damages including, but not limited to, lost revenues or lost profits resulting from the use or misuse of the information contained on this map. Any sale of this map or information on this map is prohibited except by written permission of King County.