

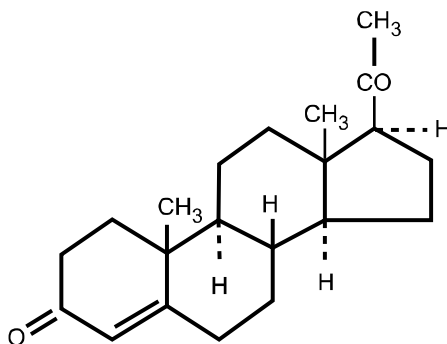
**PROGESTERONE INJECTION USP
IN SESAME OIL
FOR INTRAMUSCULAR USE ONLY
Rx only**

DESCRIPTION

Progesterone injection, a progestin, is a sterile solution of progesterone in a suitable vegetable oil available for intramuscular use.

Progesterone occurs as a white or creamy white, crystalline powder. It is odorless and is stable in air. Practically insoluble in water, it is soluble in alcohol, acetone, and dioxane and sparingly soluble in vegetable oils.

It has the following structural formula:



$C_{21}H_{30}O_2$ M.W. 314.47

Pregn-4-ene-3, 20-dione

Each mL contains: Progesterone 50 mg, Benzyl Alcohol 10% as preservative in Sesame Oil q.s.

CLINICAL PHARMACOLOGY

Transforms proliferative endometrium into secretory endometrium.

Inhibits (at the usual dose range) the secretion of pituitary gonadotropins, which in turn prevents follicular maturation and ovulation.

Pharmacokinetics and Metabolism:

Absorption: After intramuscular administration of 10 mg of progesterone in oil maximum plasma concentrations (geometric mean of 7 ng/mL) were reached within approximately 8 hours after injection and plasma concentrations remained above baseline for about 24 hours after injection. Injection of 10, 25, and 50 mg resulted in geometric mean values for maximum plasma concentration (C_{MAX}) of 7, 28, and 50 ng/mL, respectively.

Distribution: Progesterone is extensively bound to plasma proteins, primarily albumin (50-54%) and cortisol-binding protein (43-48%).

Metabolism: Progesterone is metabolized primarily in the liver by reduction to pregnanediol, pregnanetriol and pregnanolone. Subsequent conjugation results in the formation of glucuronide and sulfate metabolites. The mean plasma metabolic clearance rate in cycling women is 2510 ± 135 (SEM) L/day.

Excretion: The glucuronide and sulfate conjugates of pregnanediol and pregnanolone are excreted in the urine and bile. Progesterone metabolites which are excreted in the bile may undergo enterohepatic recycling or may be excreted in the feces.

The pharmacokinetic data was determined in a small number of patients, limiting the precision in which population values may be estimated.

Special Populations:

Renal Insufficiency: The safety and effectiveness in patients with renal insufficiency have not been established. Since progesterone metabolites are excreted mainly by the kidneys, progesterone should be administered with caution and careful monitoring in this patient population (see PRECAUTIONS).

Hepatic Insufficiency: The safety and effectiveness in patients with hepatic insufficiency have not been established. Since progesterone is metabolized by the liver, use in patients with liver dysfunction or disease is contraindicated (see CONTRAINDICATIONS).

Drug Interactions:

The metabolism of progesterone by human liver microsomes was inhibited by ketoconazole ($IC_{50} < 01 \mu M$). Ketoconazole is a known inhibitor of cytochrome P450 3A4 and these data suggest that ketoconazole or other known inhibitors of this enzyme may increase the bioavailability of progesterone. The clinical relevance of the *in vitro* findings is unknown.

INDICATIONS AND USAGE

This drug is indicated in amenorrhea and abnormal uterine bleeding due to hormonal imbalance in the absence of organic pathology, such as submucous fibroids or uterine cancer.

CONTRAINDICATIONS

1. Current or past history of thrombophlebitis, thromboembolic disorders, or cerebral apoplexy.
2. Liver dysfunction or disease.
3. Known or suspected malignancy of breast or genital organs.
4. Undiagnosed vaginal bleeding.
5. Missed abortion.
6. Known sensitivity to progesterone injection.

WARNINGS

The physician should be alert to the earliest manifestations of thrombotic disorders (thrombophlebitis, cerebrovascular disorders, pulmonary embolism, and retinal thrombosis). Should any of these occur or be suspected, the drug should be discontinued

immediately.

Medication should be discontinued pending examination if there is a sudden partial or complete loss of vision, or if there is a sudden onset of proptosis, diplopia or migraine. If examination reveals papilledema or retinal vascular lesions, medication should be withdrawn.

PRECAUTIONS

General

The pretreatment physical examination should include special reference to breast and pelvic organs, as well as a Papanicolaou smear.

Because progestational drugs may cause some degree of fluid retention, conditions which might be influenced by this condition, such as epilepsy, migraine, asthma, cardiac, or renal dysfunction, require careful observation.

In cases of breakthrough bleeding, as in all cases of irregular bleeding *per vaginum*, nonfunctional causes should be borne in mind, and adequate diagnostic measures undertaken.

Patients who have a history of psychic depression should be carefully observed and the drug discontinued if the depression recurs to a serious degree.

The age of the patient constitutes no absolute limiting factor although treatment with progestin may mask the onset of the climacteric.

The pathologist should be advised of progestin therapy when relevant specimens are submitted.

There are possible risks which may be associated with the use of progestin treatment, including adverse effects on carbohydrate and lipid metabolism. The dosage used may be important in minimizing these adverse effects.

A decrease in glucose tolerance has been observed in a small percentage of patients on estrogen-progestin combination treatment. The mechanism of this decrease is obscure. For this reason, diabetic patients should be carefully observed while receiving such therapy.

Carcinogenesis, Mutagenesis, Impairment of Fertility

Long-term intramuscular administration of Medroxyprogesterone acetate (MPA) has been shown to produce mammary tumors in beagle dogs. There is no evidence of a carcinogenic effect associated with the oral administration of MPA to rats and mice.

Medroxyprogesterone acetate was not mutagenic in a battery of *in vitro* or *in vivo* genetic toxicity assays.

Progesterone at high doses is an antifertility drug and high doses would be expected to impair fertility until the cessation of treatment.

Geriatric Use: The safety and effectiveness in geriatric patients (over age 65) have not been established.

Pediatric Use: Safety and effectiveness in pediatric patients have not been established.

Nursing Mothers: Detectable amounts of drug have been identified in the milk of mothers receiving progestational drugs. The effect of this on the nursing infant has not been determined.

ADVERSE REACTIONS

Breakthrough bleeding; spotting; change in menstrual flow; amenorrhea; edema; change in weight (increase or decrease); changes in cervical erosion and cervical secretions; cholestatic jaundice; breast tenderness and galactorrhea; **pain, irritation, and/or redness at the injection area**; skin sensitivity reactions consisting of urticaria, pruritus, edema and generalized rash; acne, alopecia and hirsutism; rash (allergic) with and without pruritus; anaphylactoid reactions; mental depression; pyrexia; insomnia; nausea; and somnolence.

A statistically significant association has been demonstrated between use of estrogen-progestin combination drugs and pulmonary embolism and cerebral thrombosis and embolism. For this reason patients on progestin therapy should be carefully observed. There is also evidence suggestive of an association with neuro-ocular lesions, e.g., retinal thrombosis and optic neuritis.

The following adverse reactions have been observed in patients receiving estrogen-progestin combination drugs: Rise in blood pressure in susceptible individual, premenstrual syndrome, changes in libido, changes in appetite, cystitis-like syndrome, headache, nervousness, fatigue, backache, hirsutism, loss of scalp hair, erythema multiforme, erythema nodosum, hemorrhagic eruption, itching, and dizziness.

The following laboratory results may be altered by the use of estrogen-progestin combination drugs: increased sulfobromophthalein retention and other hepatic function tests; coagulation tests: increase in prothrombin factors VII, VIII, IX, and X; metyrapone test; pregnanediol determinations; thyroid function: increase in PBI, and butanol extractable protein bound iodine and decrease in T³ uptake values.

DOSAGE AND ADMINISTRATION

Progesterone is administered by intramuscular injection. It differs from other commonly used steroids in that it is irritating at the place of injection.

Amenorrhea: Five to 10 mg are given for six to eight consecutive days. If there has been sufficient ovarian activity to produce a proliferative endometrium, one can expect withdrawal bleeding forty-eight to seventy-two hours after the last injection. This may be followed by spontaneous normal cycles.

Functional Uterine Bleeding: Five to 10 mg are given daily for six doses. Bleeding may be expected to cease within six days. When estrogen is given as well, the administration of progesterone is begun after two weeks of estrogen therapy. If menstrual flow begins during the course of injections of progesterone, they are discontinued.

Parenteral drug products should be inspected visually for particulate matter and discoloration prior to administration whenever the solution and container permit.

HOW SUPPLIED

Progesterone Injection USP, 50 mg/mL is available in 10 mL multiple dose vials, individually boxed.

(NDC 0591-3128-79)

Store at controlled room temperature 15-30°C (59-86°F).

Product No.: 0379-10

Revised: January 2007

PATIENT INFORMATION PROGESTERONE INJECTION USP

For Intramuscular Use Only

FOR THE TREATMENT OF AMENORRHEA (ABSENCE OF MENSES IN WOMEN WHO HAVE PREVIOUSLY HAD A MENSTRUAL PERIOD) OR ABNORMAL UTERINE BLEEDING DUE TO HORMONAL IMBALANCE.

Please read this information carefully before you start to use Progesterone Injection and each time your prescription is renewed, in case anything has changed. This leaflet does not take the place of discussions with your doctor. If you still have any questions, ask your doctor or health-care provider.

About Progesterone Injection

Progesterone Injection is a sterile injectable solution containing the natural female hormone called progesterone. Progesterone Injection is indicated for the treatment of amenorrhea and abnormal uterine bleeding due to progesterone deficiency.

Understanding the role of Progesterone Injection in the treatment of your menstrual irregularities.

Progesterone is one of the hormones essential for regular menstrual periods. If your doctor has determined your body does not produce enough progesterone on its own, Progesterone Injection may be prescribed to provide the progesterone you need.

When you do not produce enough progesterone, menstrual irregularities can occur. Progesterone Injection can provide you with the progesterone needed during a normal menstrual cycle.

Possible side effects of Progesterone Injection

The following side effects have been reported with Progesterone Injection. Consult your doctor if you experience any of the side effects mentioned below, or other side effects.

- breakthrough bleeding
- spotting
- changes in menstrual flow
- amenorrhea
- change in weight (increase or decrease)
- pain, irritation, swelling, and/or redness at the injection area
- general swelling
- vaginal discharge
- yellow discoloration of skin or white of eyes
- breast tenderness, discharge from the nipple
- skin reactions including rash, hives, itching, and swelling
- acne

- hair loss or growth of new hair
- mental depression
- fever
- insomnia or sleepiness*
- nausea
- anaphylactoid (life-threatening allergic) reaction with symptoms that may include a sense of uneasiness or apprehension; flushing; fast, throbbing heartbeat; itching; hives; difficult breathing; swelling of the throat; fainting; nausea; vomiting; or convulsions.

*If you experience sleepiness, do not drive or operate machinery.

When you should not use Progesterone Injection

- If you are allergic to progesterone, progesterone-like drugs, benzyl alcohol or sesame oil/seeds.
- If you have unusual vaginal bleeding which has not been evaluated by your doctor.
- If you have liver disease.
- If you have known or suspected cancer of the breast or genital organs.
- If you have a miscarriage and your physician suspects some tissue is still in the uterus.
- If you have or have had blood clots in the legs, lungs, eyes, or elsewhere.

Risks of Progesterone Injection

- Abnormal blood clotting. Blood clots have been reported with the use of estrogens and progestational drugs (alone or in combination). If blood clots do form in your bloodstream, they can cut off the blood supply to vital organs, causing serious problems. These problems may include a stroke (by cutting off blood to part of the brain), a heart attack (by cutting off blood to part of the heart), a pulmonary embolus (by cutting off blood to part of the lungs), or other problems. Any of these conditions may cause death or serious long-term disability. Call your doctor immediately if you suspect you have any of these conditions. He or she may advise you to stop using this drug.

Precautions

Be alert for unusual signs and symptoms. If any of these warning signals (or any other unusual symptoms) happen while you are using Progesterone Injection, call your doctor immediately:

- Abnormal bleeding from the vagina.
- Pains in the calves or chest, a sudden shortness of breath or coughing blood indicating possible clots in the legs, heart, or lungs.
- Severe headache or vomiting, dizziness, faintness, or changes in vision or speech,

- weakness or numbness of an arm or leg indicating possible clots in the brain or eye.
- Breast lumps, which could be associated with fibrocystic disorders, fibroadenoma, or breast cancer. (Ask your doctor or health-care provider to show you how to examine your breasts monthly.)
 - Yellowing of the skin and/or white of the eyes indicating possible liver problems.

How Progesterone Injection works

Progesterone Injection is intended for administration by injection into a muscle mass. Following injection, the medication is absorbed into the bloodstream.

Other information

1. Your doctor has prescribed this drug for you and you alone. Do not give this drug to anyone else.
2. This medication was prescribed for your particular medical condition. Do not use it for another condition.
3. Keep this and all drugs out of the reach of children.

How to use Progesterone Injection

Progesterone Injection will be administered to you by a health-care provider or your caregiver. Your doctor will provide instructions regarding the dose and manner in which the medication should be injected. Follow your doctor's instructions closely. If you have any questions about product administration, ask your doctor or health-care provider.

How Supplied

Progesterone Injection, 50 mg/mL is available in 10 mL multiple dose vials. Vials are individually boxed.

Progesterone Injection should be stored at controlled room temperature 15-30°C (59-86°F).

Do not use Progesterone Injection after the expiration date which is printed on the vial label.

Revised: January 2007

Product No.: 0379-10

Watson Laboratories, Inc.

Corona, CA 92880 USA