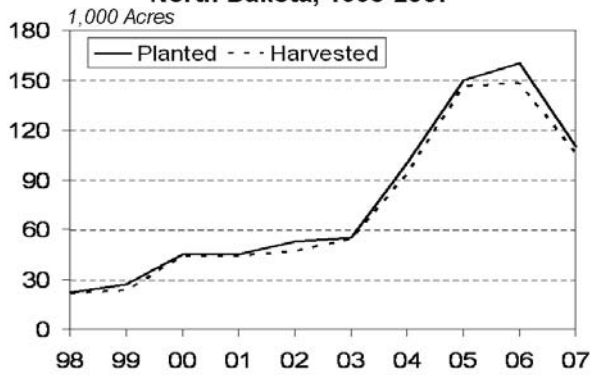
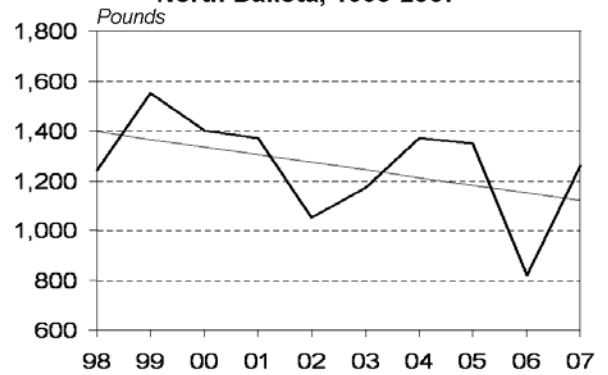


Lentils

**Lentils: Planted and Harvested Acres
North Dakota, 1998-2007**



**Lentils: Yield Per Acre
North Dakota, 1998-2007**

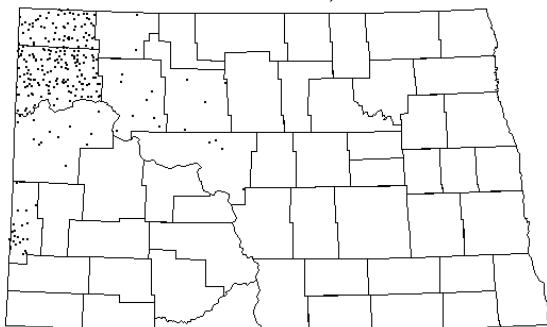


**Lentils: Acreage, Yield, Production, Price and Value
North Dakota, 1998-2007**

| Year | Area Planted | Area Harvested | Yield per Acre | Production | Marketing Year Avg Price ¹ | Value of Production ² | Value per Harvested Acre |
|------|--------------------|--------------------|----------------|------------------|---------------------------------------|----------------------------------|--------------------------|
| | <i>1,000 Acres</i> | <i>1,000 Acres</i> | <i>Pounds</i> | <i>1,000 Cwt</i> | <i>\$/Cwt</i> | <i>\$1,000</i> | <i>Dollars</i> |
| 1998 | 22.0 | 21.5 | 1,240 | 267 | 9.10 | 2,430 | 113.02 |
| 1999 | 27.0 | 23.5 | 1,550 | 364 | 11.00 | 4,004 | 170.38 |
| 2000 | 45.0 | 44.0 | 1,400 | 616 | 10.50 | 6,468 | 147.00 |
| 2001 | 45.0 | 44.0 | 1,370 | 603 | 9.60 | 5,789 | 131.57 |
| 2002 | 53.0 | 47.0 | 1,050 | 494 | 11.10 | 5,483 | 116.66 |
| 2003 | 55.0 | 54.0 | 1,170 | 632 | 15.00 | 9,480 | 175.56 |
| 2004 | 100.0 | 94.0 | 1,370 | 1,288 | 14.30 | 18,418 | 195.94 |
| 2005 | 150.0 | 146.0 | 1,350 | 1,971 | 10.20 | 20,104 | 137.70 |
| 2006 | 160.0 | 148.0 | 820 | 1,214 | 9.72 | 11,800 | 79.73 |
| 2007 | 110.0 | 106.0 | 1,260 | 1,336 | 18.60 | 24,850 | 234.43 |

¹ Preliminary 2007 marketing year average (MYA) price. Final 2007 MYA price will be published in October 2008. ² Value is computed by multiplying price by production.

**Lentils: Production
North Dakota, 2007**



1 Dot = 5,000 Cwt
Dots randomly placed within county.
Blank counties represent none harvested or undisclosed data.



**Lentils: Area Planted and Harvested, Yield and Production
North Dakota by County, 2007 and 2006¹**

| District and County | 2007 | | | | 2006 | | | |
|---------------------------|------------------------------|--------------------------------|---------------------------------|--------------------------|------------------------------|--------------------------------|---------------------------------|--------------------------|
| | Area Planted <i>Acres</i> | Area Harvested <i>Acres</i> | Yield per Acre <i>Pounds</i> | Production <i>Cwt</i> | Area Planted <i>Acres</i> | Area Harvested <i>Acres</i> | Yield per Acre <i>Pounds</i> | Production <i>Cwt</i> |
| Burke | 1,100 | 1,000 | 1,100 | 11,000 | 1,200 | 1,100 | 1,000 | 11,000 |
| Divide | 29,200 | 28,400 | 1,218 | 346,000 | 37,500 | 37,300 | 871 | 325,000 |
| Mountrail | 3,300 | 3,200 | 1,250 | 40,000 | 4,400 | 4,200 | 1,071 | 45,000 |
| Renville | | | | | | | | |
| Ward | 2,400 | 2,100 | 1,048 | 22,000 | 1,900 | 1,800 | 1,389 | 25,000 |
| Williams | 55,500 | 54,200 | 1,319 | 715,000 | 83,000 | 75,100 | 728 | 547,000 |
| Combined Counties | | | | | | | | |
| Northwest | 91,500 | 88,900 | 1,276 | 1,134,000 | 128,000 | 119,500 | 797 | 953,000 |
| Benson | | | | | | | | |
| Bottineau | | | | | | | | |
| McHenry | | | | | | | | |
| Pierce | | | | | | | | |
| Rolette | | | | | | | | |
| Combined Counties | | | | | | | | |
| North Central | | | | | | | | |
| Cavalier | | | | | | | | |
| Grand Forks | | | | | | | | |
| Nelson | | | | | | | | |
| Pembina | | | | | | | | |
| Ramsey | | | | | | | | |
| Towner | | | | | | | | |
| Walsh | | | | | | | | |
| Combined Counties | | | | | | | | |
| Northeast | | | | | | | | |
| Dunn | | | | | | | | |
| McKenzie | 5,400 | 5,300 | 1,113 | 59,000 | 9,300 | 8,400 | 690 | 58,000 |
| McLean | 1,900 | 1,700 | 1,059 | 18,000 | | | | |
| Mercer | | | | | | | | |
| Oliver | | | | | | | | |
| Combined Counties | 400 | 300 | 667 | 2,000 | 4,700 | 4,100 | 1,098 | 45,000 |
| West Central | 7,700 | 7,300 | 1,082 | 79,000 | 14,000 | 12,500 | 824 | 103,000 |
| Eddy | | | | | | | | |
| Foster | | | | | | | | |
| Kidder | | | | | | | | |
| Sheridan | | | | | | | | |
| Stutsman | | | | | | | | |
| Wells | | | | | | | | |
| Combined Counties | | | | | | | | |
| Central | | | | | | | | |
| Barnes | | | | | | | | |
| Cass | | | | | | | | |
| Griggs | | | | | | | | |
| Steele | | | | | | | | |
| Traill | | | | | | | | |
| Combined Counties | | | | | | | | |
| East Central | | | | | | | | |
| Adams | | | | | | | | |
| Billings | | | | | | | | |
| Bowman | | | | | | | | |
| Golden Valley | 9,000 | 8,700 | 1,299 | 113,000 | 15,200 | 14,900 | 1,020 | 152,000 |
| Hettinger | | | | | | | | |
| Slope | | | | | | | | |
| Stark | | | | | | | | |
| Combined Counties | | | | | 800 | 400 | 1,000 | 4,000 |
| Southwest | 9,000 | 8,700 | 1,299 | 113,000 | 16,000 | 15,300 | 1,020 | 156,000 |
| Burleigh | | | | | | | | |
| Emmons | | | | | | | | |
| Grant | | | | | | | | |
| Morton | | | | | | | | |
| Sioux | | | | | | | | |
| Combined Counties | | | | | | | | |
| South Central | | | | | | | | |
| Dickey | | | | | | | | |
| LaMoure | | | | | | | | |
| Logan | | | | | | | | |
| McIntosh | | | | | | | | |
| Ransom | | | | | | | | |
| Richland | | | | | | | | |
| Sargent | | | | | | | | |
| Combined Counties | | | | | | | | |
| Southeast | | | | | | | | |
| Combined Districts | 1,800 | 1,100 | 909 | 10,000 | 2,000 | 700 | 286 | 2,000 |
| State Total | 110,000 | 106,000 | 1,260 | 1,336,000 | 160,000 | 148,000 | 820 | 1,214,000 |

¹ Data published in combined counties or districts to avoid disclosure of individual operations.