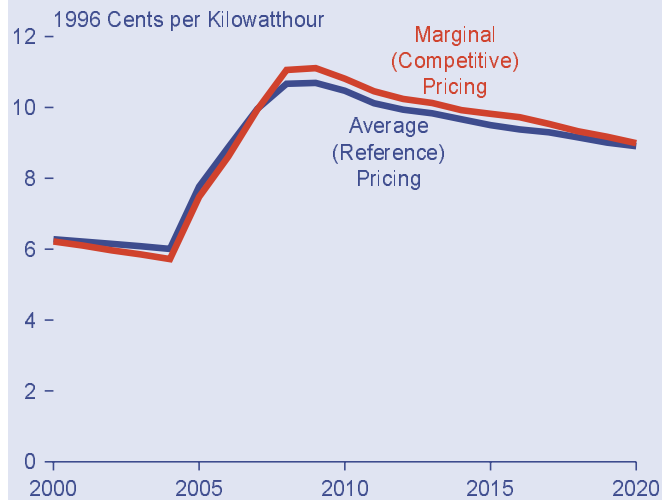
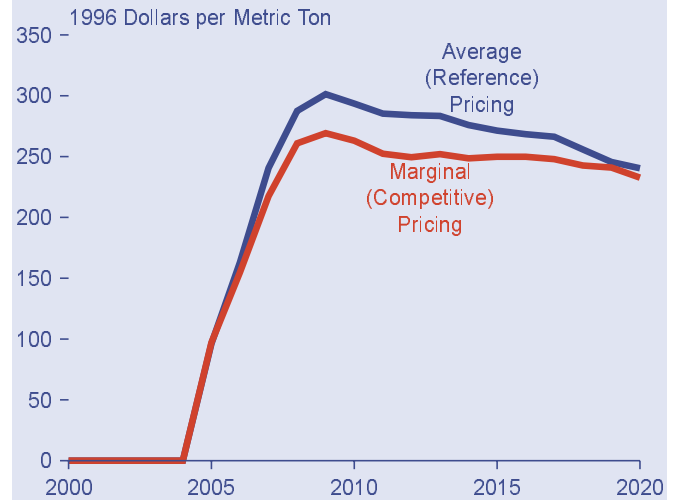


Figure 86. Projected Electricity Prices in Regulated and Competitive Electricity Markets, 2000-2020



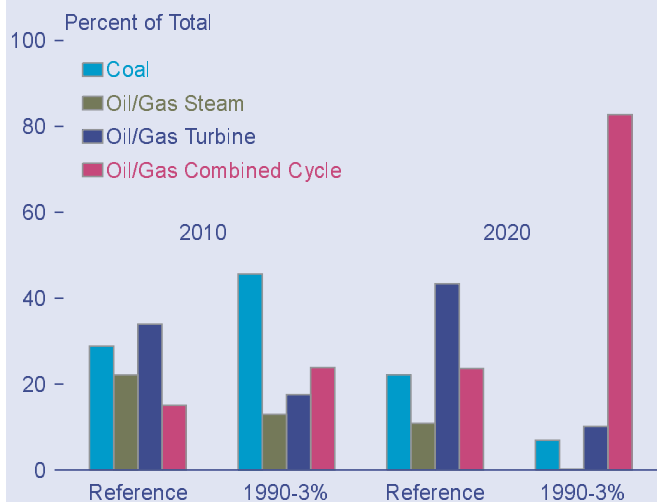
Source: Office of Integrated Analysis and Forecasting, National Energy Modeling System runs FD03BLW.D080398B and FD03COMP.D080698C.

Figure 87. Projected Carbon Prices in Regulated and Competitive Electricity Markets, 2000-2020



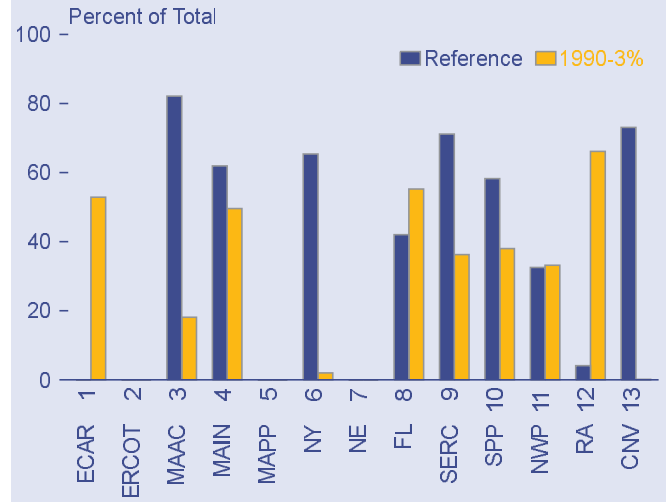
Source: Office of Integrated Analysis and Forecasting, National Energy Modeling System runs FD03BLW.D080398B and FD03COMP.D080698C.

Figure 88. Projected Percentage of Time for Different Plant Types Setting National Marginal Electricity Prices, 2010 and 2020



Source: Office of Integrated Analysis and Forecasting, National Energy Modeling System runs KYCOMP.D080598A and FD03COMP.D080698C.

Figure 89. Projected Percentage of Time for Interregional Trade Setting Marginal Electricity Prices, 2020



Note: ECAR = East Central Area Reliability Coordination Agreement Region; ERCOT = Electric Reliability Council of Texas; MAAC = Mid-Atlantic Area Council; MAIN = Mid-America Interconnected Network; MAPP = Mid-Centinent Area Power Pool; NY = New York Power Pool; NE = New England Power Pool; FL = Florida subregion of the Southeastern Electric Reliability Council; STV = Southeastern Electric Reliability Council excluding Florida; SPP = Southwest Power Pool; NWP = Northwest Pool subregion of the Western Systems Coordinating Council; RA = Rocky Mountain and Arizona-New Mexico Power Areas; CNV = California-Southern Nevada Power Area.

Source: Office of Integrated Analysis and Forecasting, National Energy Modeling System runs KYCOMP.D080598A and FD03COMP.D080698C.