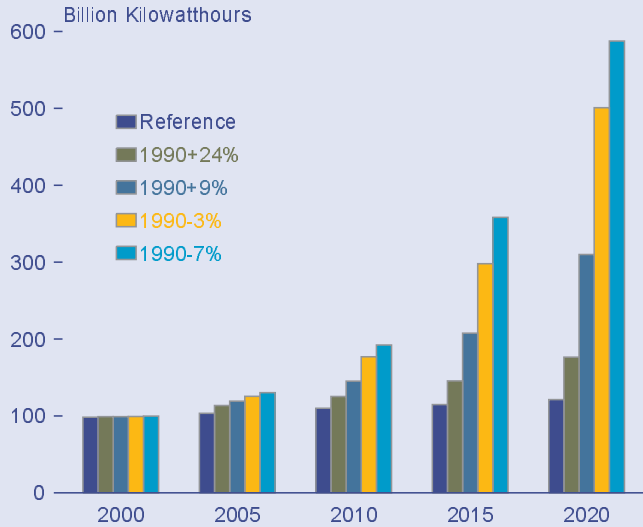
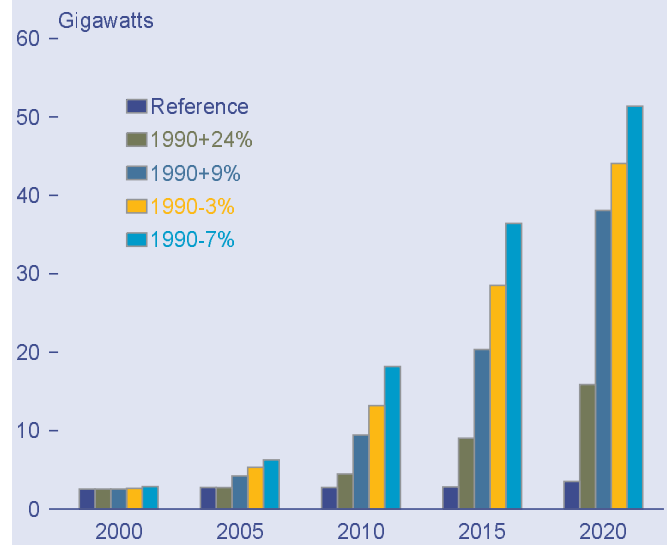


Figure 78. Projections of Nonhydroelectric Renewable Electricity Generation, 2000-2020



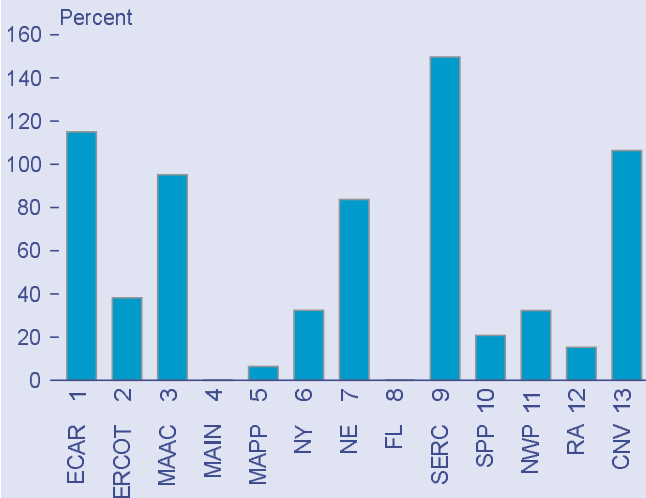
Source: Office of Integrated Analysis and Forecasting, National Energy Modeling System runs KYBASE.D080398A, FD24ABV.D080398B, FD09ABV.D080398B, FD03BLW.D080398B, and FD07BLW.D080398B.

Figure 79. Projections of Wind-Powered Electricity Generation Capacity, 2000-2020



Source: Office of Integrated Analysis and Forecasting, National Energy Modeling System runs KYBASE.D080398A, FD24ABV.D080398B, FD09ABV.D080398B, FD03BLW.D080398B, and FD07BLW.D080398B.

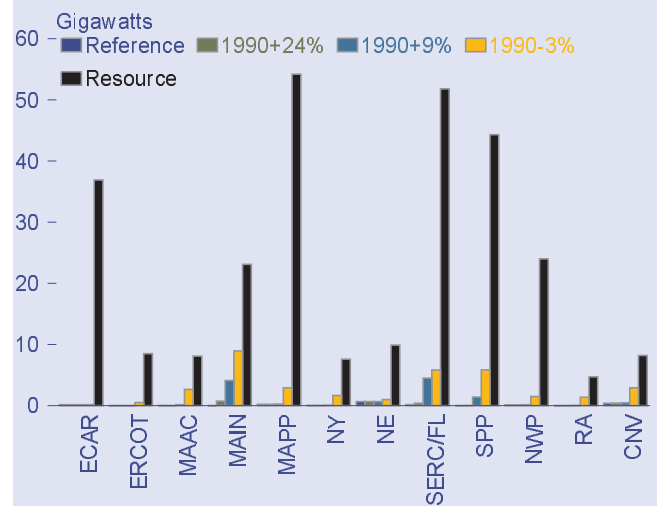
Figure 80. Projected Shares of Most Economical Wind Resources Developed by Region, 1990-7% Case, 1996-2020



Note: ECAR = East Central Area Reliability Coordination Agreement Region; ERCOT = Electric Reliability Council of Texas; MAAC = Mid-Atlantic Area Council; MAIN = Mid-America Interconnected Network; MAPP = Mid-Continent Area Power Pool; NY = New York Power Pool; NE = New England Power Pool; FL = Florida subregion of the Southeastern Electric Reliability Council; STV = Southeastern Electric Reliability Council excluding Florida; SPP = Southwest Power Pool; NWP = Northwest Pool subregion of the Western Systems Coordinating Council; RA = Rocky Mountain and Arizona-New Mexico Power Areas; CNV = California-Southern Nevada Power Area.

Source: Office of Integrated Analysis and Forecasting, National Energy Modeling System run FD07BLW.D080398B.

Figure 81. Estimated Biomass Resource Availability and Projected Generating Capacity in 2020 by Region



Note: ECAR = East Central Area Reliability Coordination Agreement Region; ERCOT = Electric Reliability Council of Texas; MAAC = Mid-Atlantic Area Council; MAIN = Mid-America Interconnected Network; MAPP = Mid-Continent Area Power Pool; NY = New York Power Pool; NE = New England Power Pool; FL = Florida subregion of the Southeastern Electric Reliability Council; STV = Southeastern Electric Reliability Council excluding Florida; SPP = Southwest Power Pool; NWP = Northwest Pool subregion of the Western Systems Coordinating Council; RA = Rocky Mountain and Arizona-New Mexico Power Areas; CNV = California-Southern Nevada Power Area.

Source: Office of Integrated Analysis and Forecasting, National Energy Modeling System runs KYBASE.D080398A, FD24ABV.D080398B, FD09ABV.D080398B, FD03BLW.D080398B, and FD07BLW.D080398B.