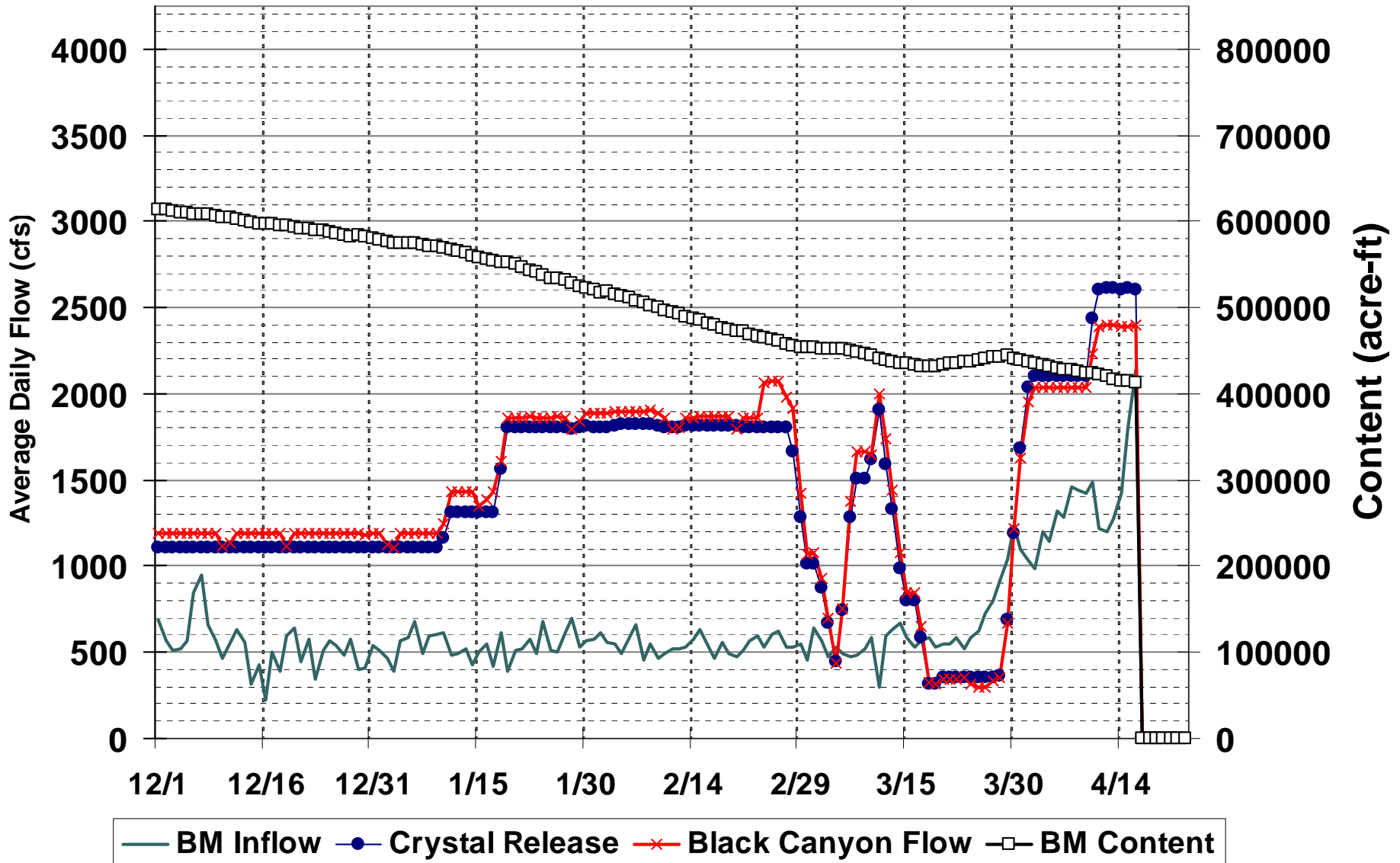
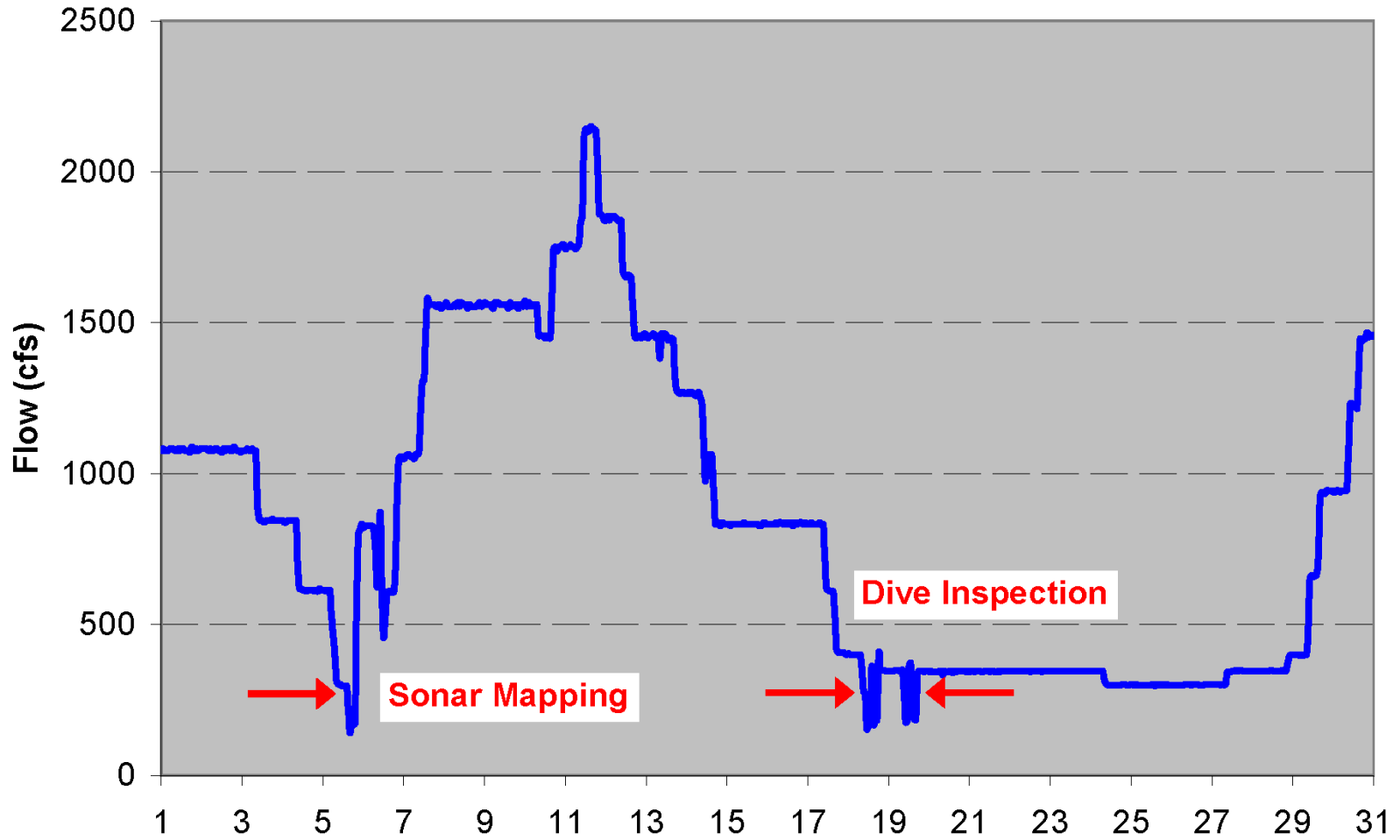


PAST OPERATIONS

December 2007 - April 2008

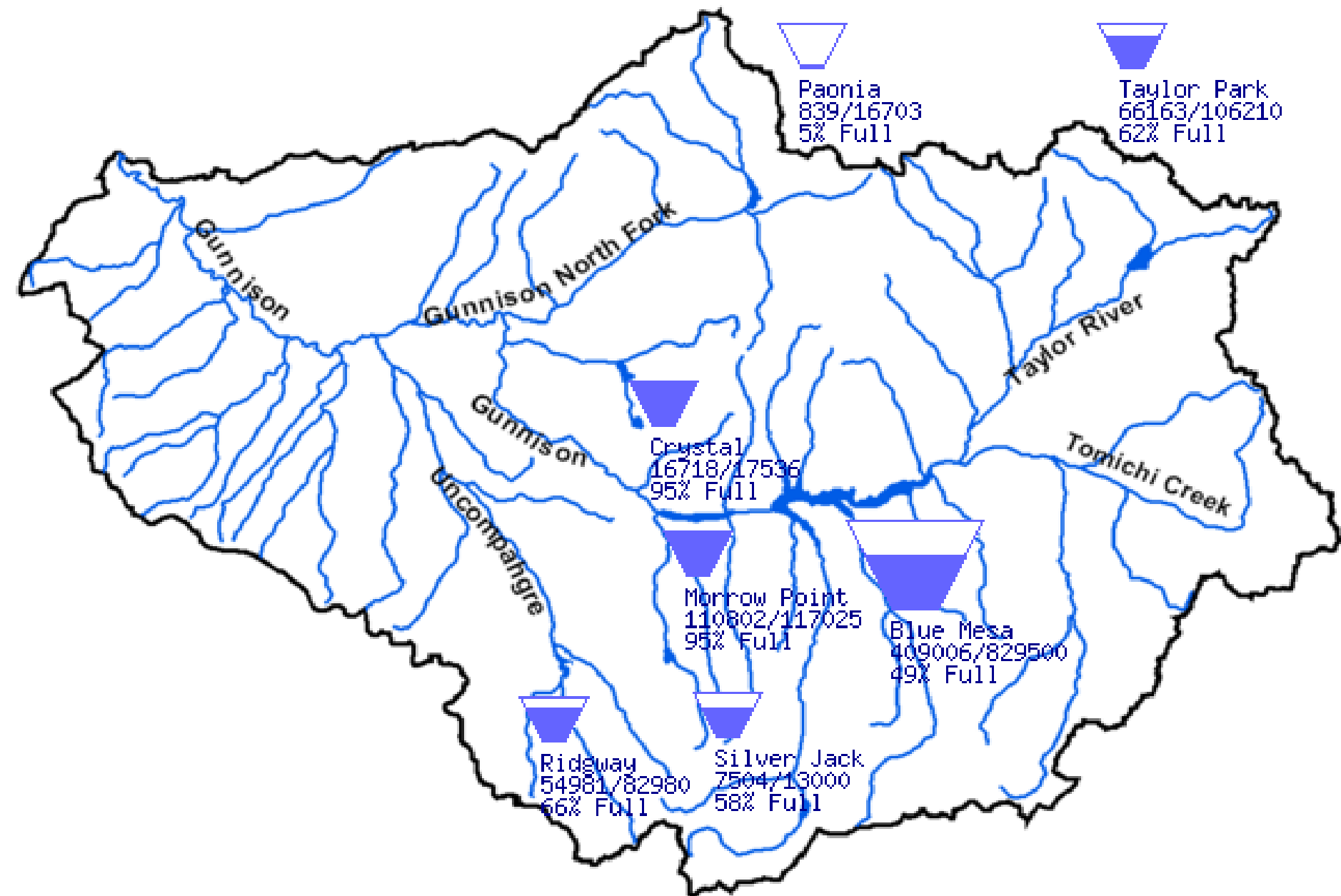


Gunnison River Below the Tunnel - March 2008



CURRENT CONDITIONS

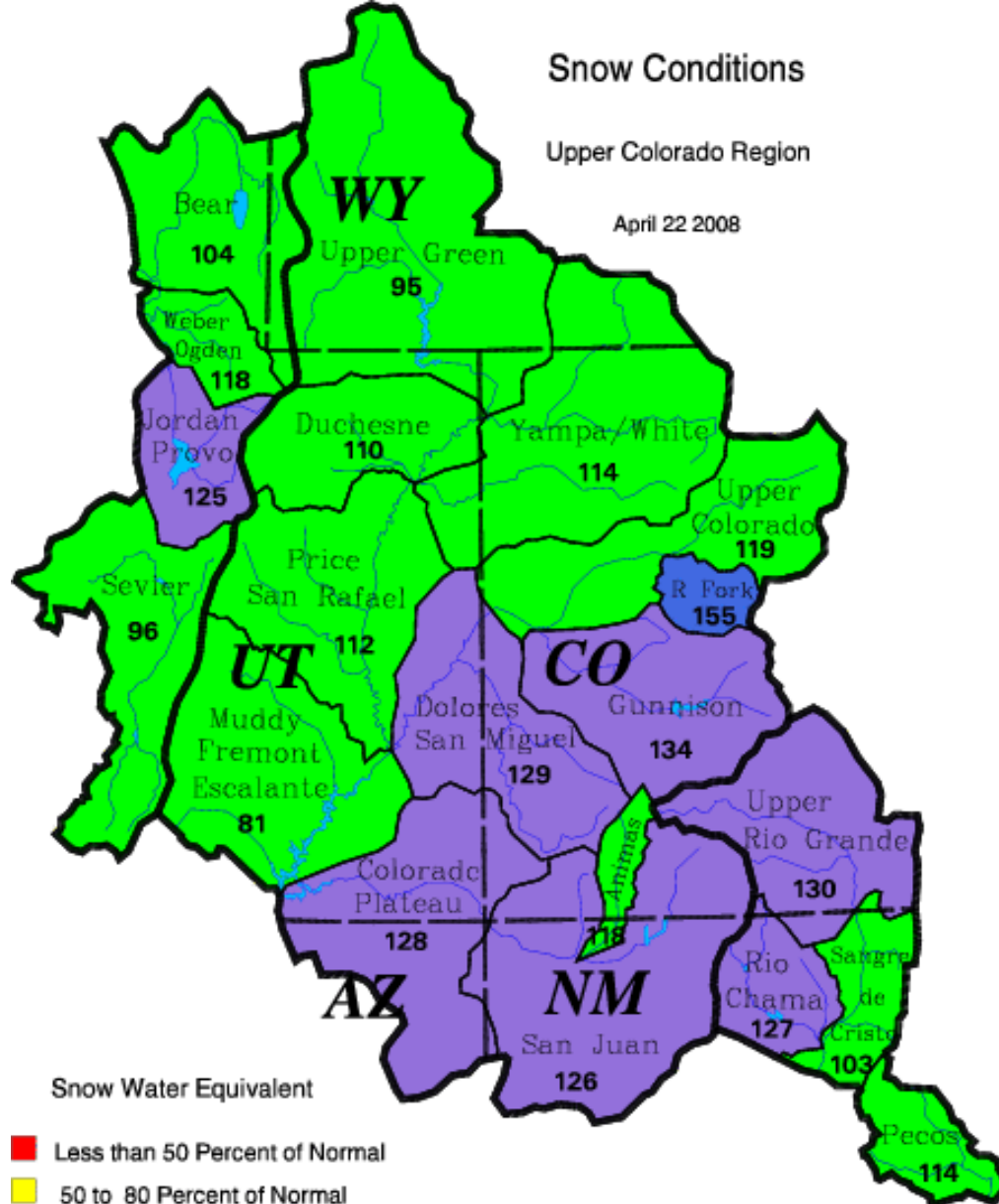
Gunnison River Basin, CO



Snow Conditions

Upper Colorado Region

April 22 2008



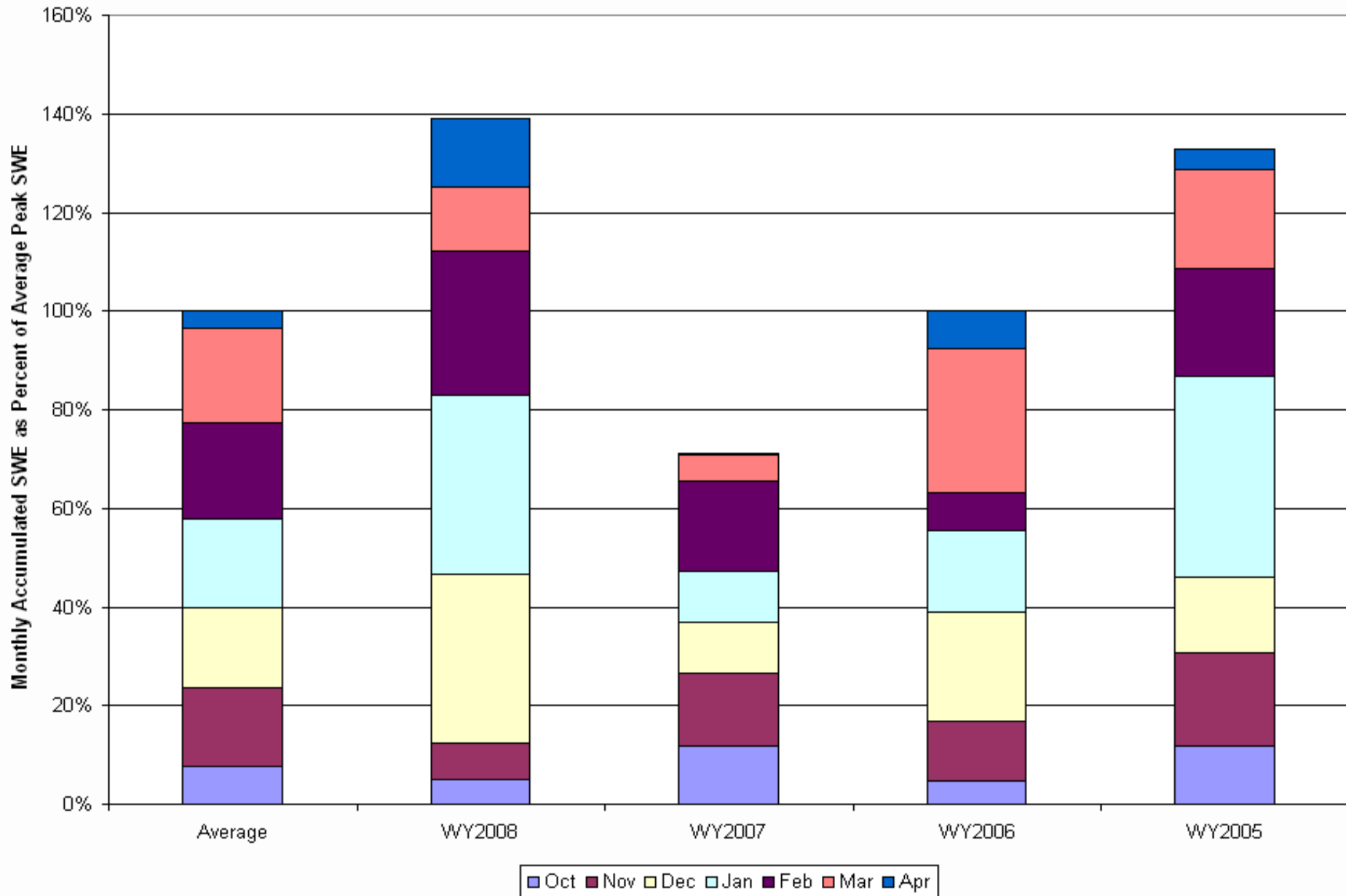
Snow Water Equivalent

- Less than 50 Percent of Normal
- 50 to 80 Percent of Normal
- 80 to 120 Percent of Normal
- 120 to 150 Percent of Normal
- Greater than 150 Percent of Normal

Upper Colorado
GIS
Region

Gunnison River Basin Time Series Monthly Snowpack Summary

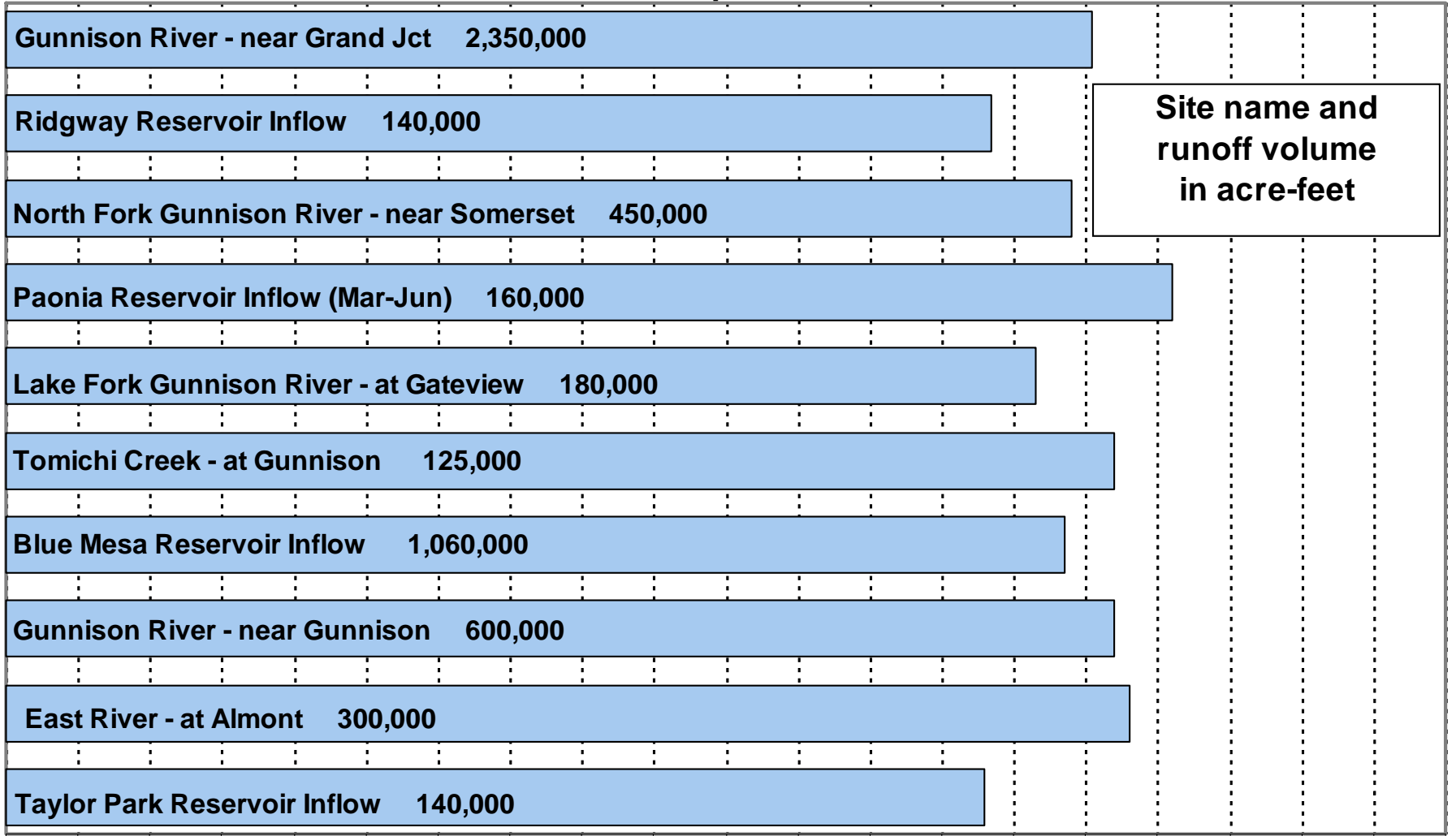
Based on Provisional SNOTEL data as of Apr 22, 2008



RUNOFF FORECASTS

Forecasted April-July Runoff

As of April 1st



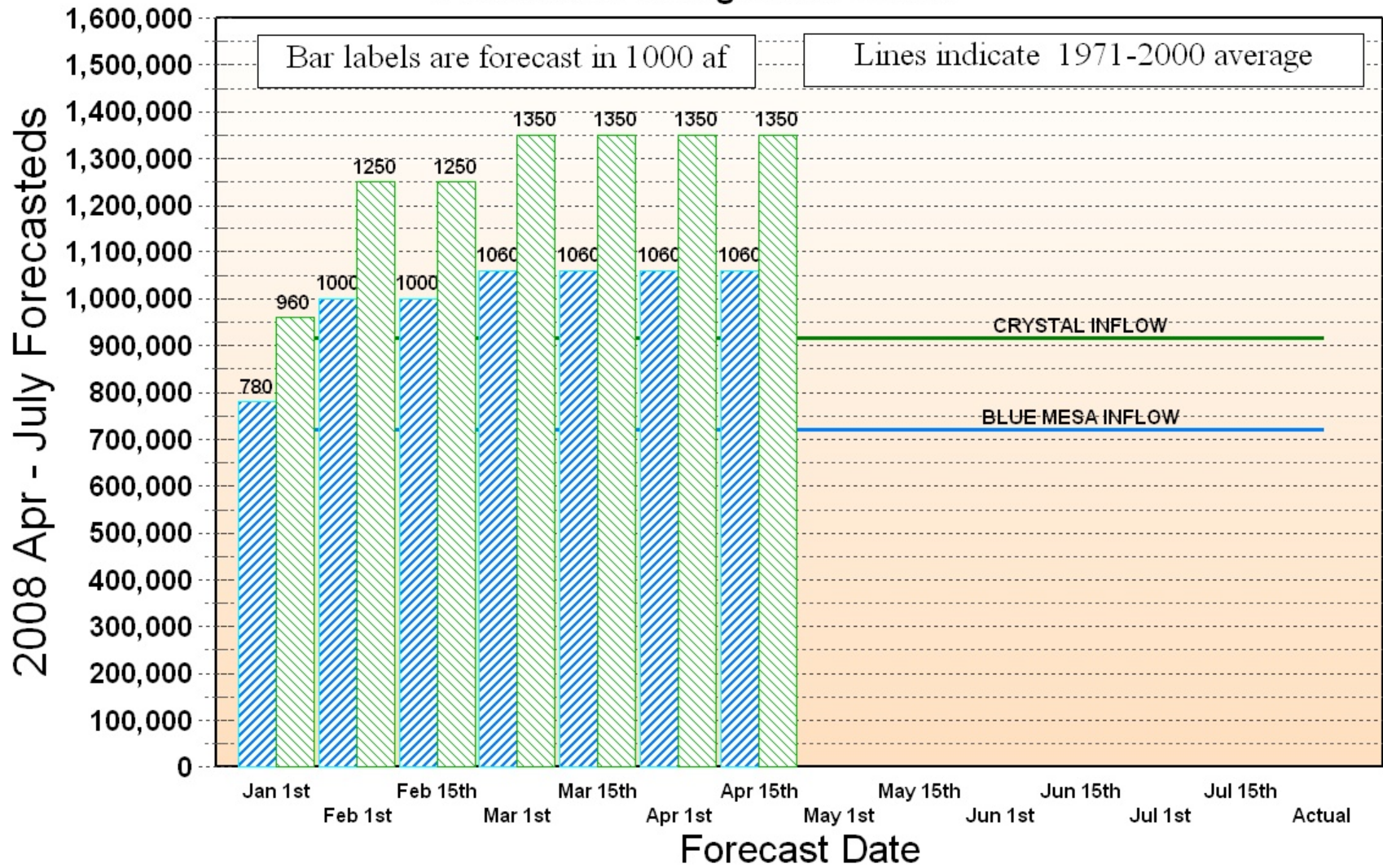
Site name and
runoff volume
in acre-feet

0% 10% 20% 30% 40% 50% 60% 70% 80% 90% 100% 110% 120% 130% 140% 150% 160% 170% 180% 190% 200%

Percent of 1971-2000 Average

Aspinall Unit

Forecasted Unregulated Inflow



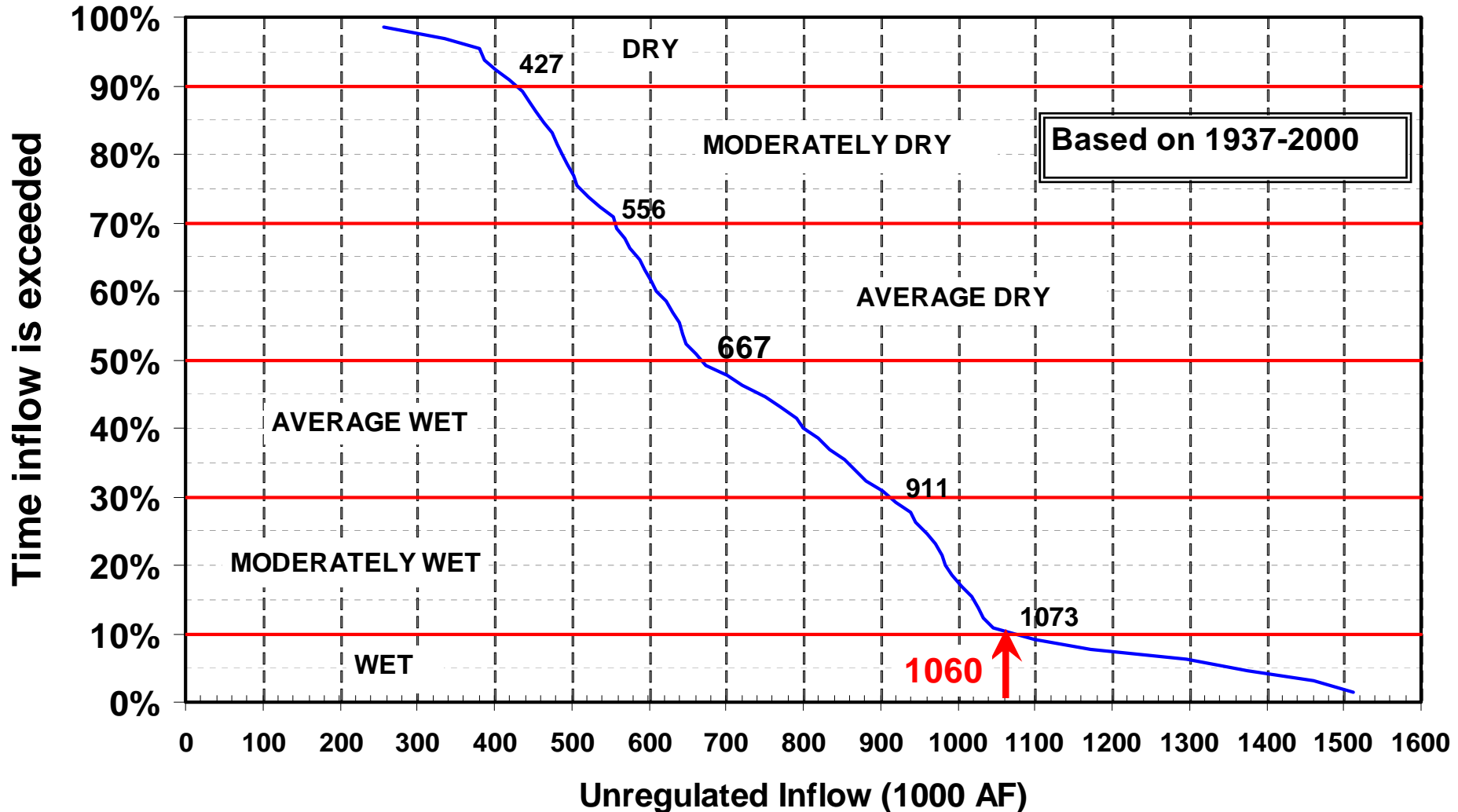
Blue Mesa Inflow



Crystal inflow

Blue Mesa Reservoir

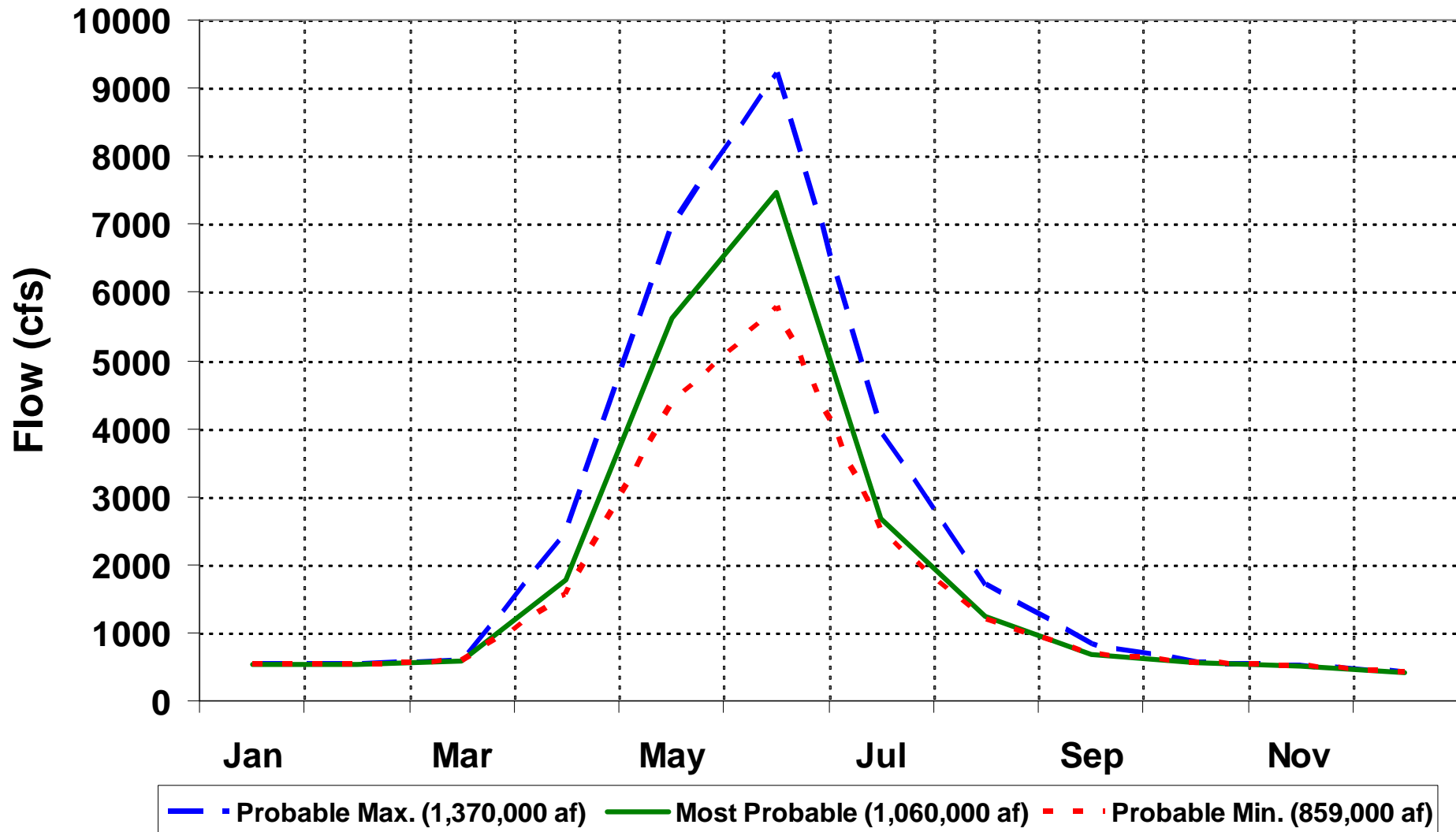
April - July Unregulated Inflow



24 MONTH STUDY

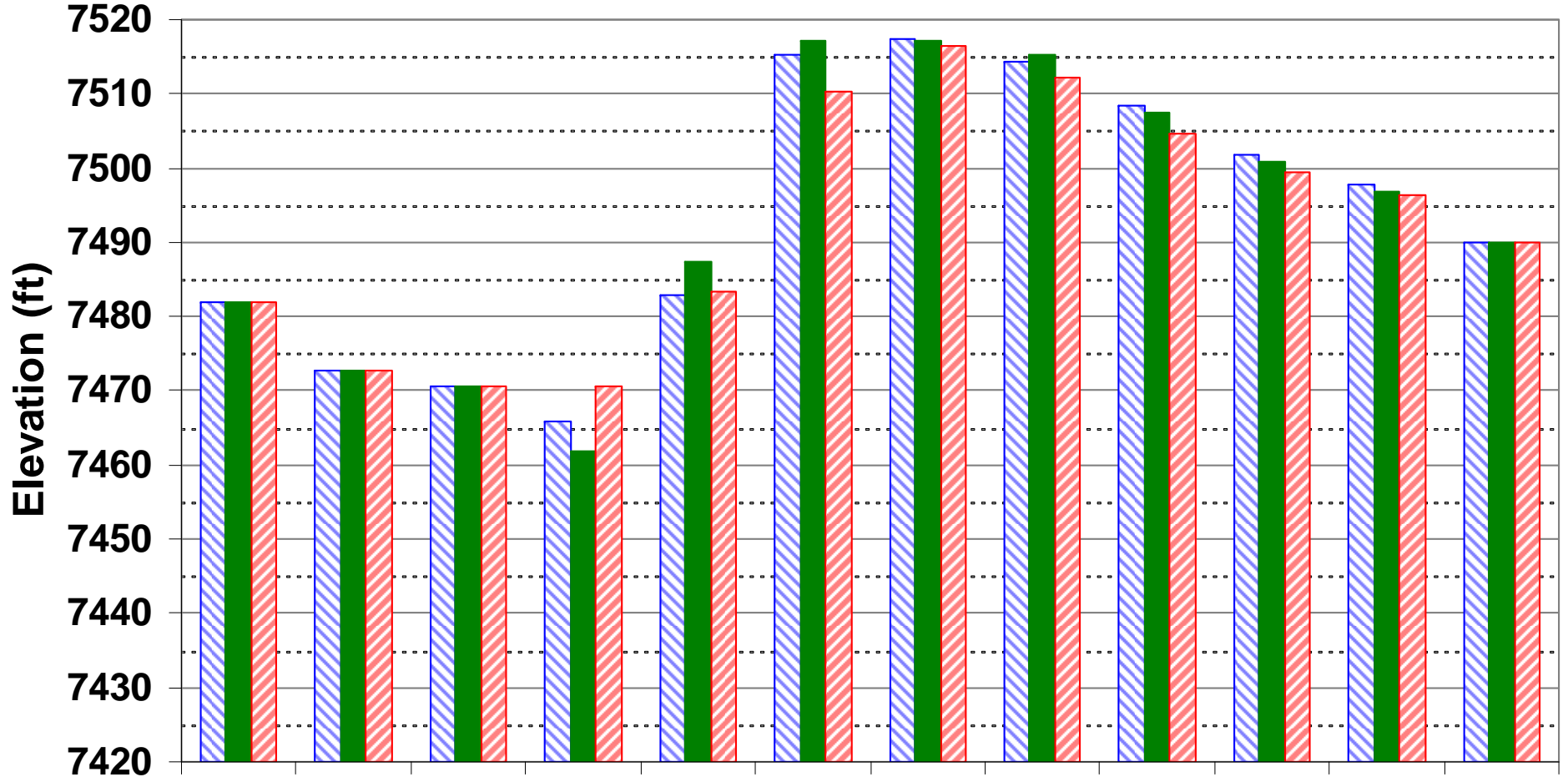
Unregulated Blue Mesa Inflow

Monthly Average



Blue Mesa Elevation

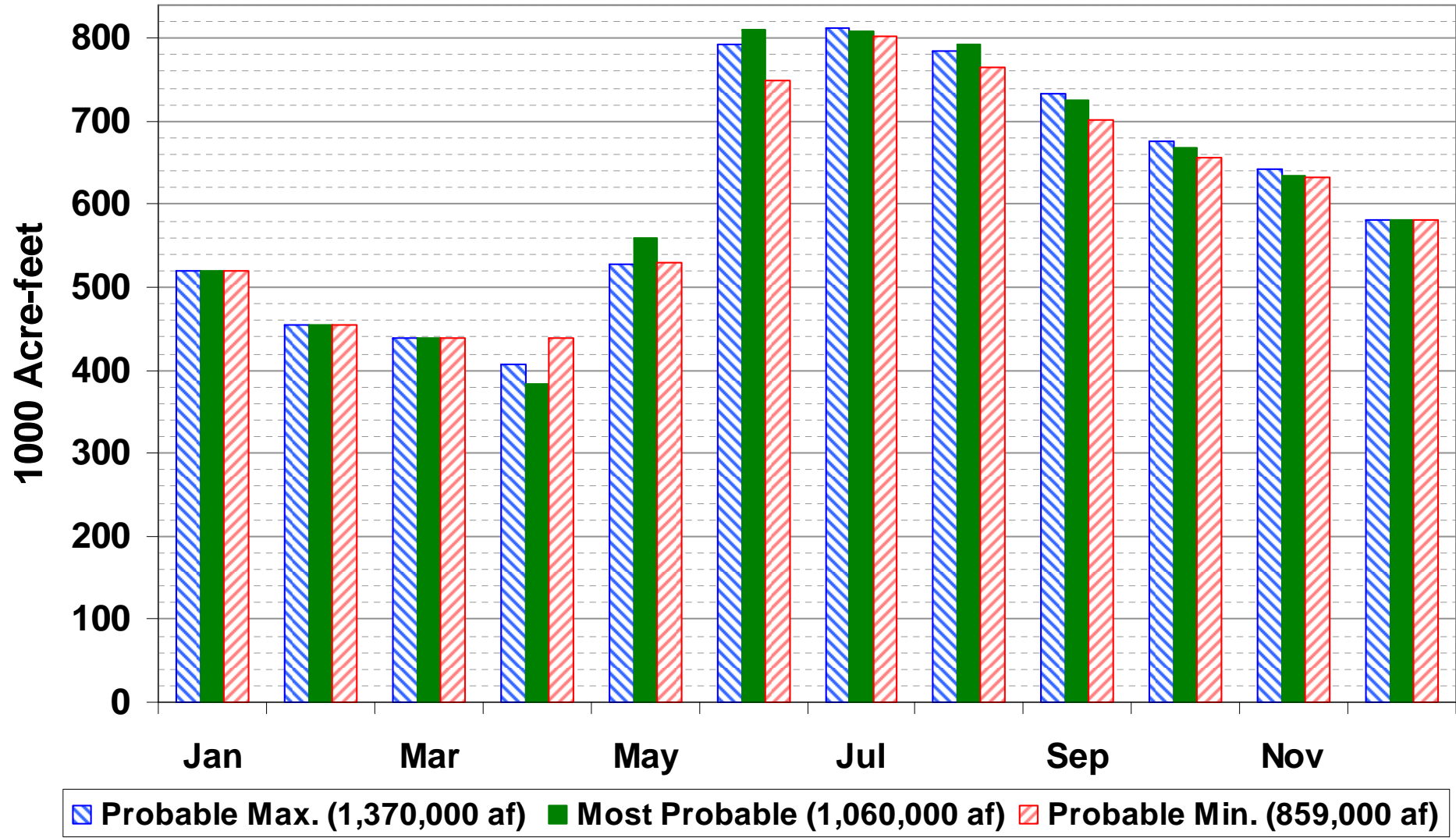
End of Month



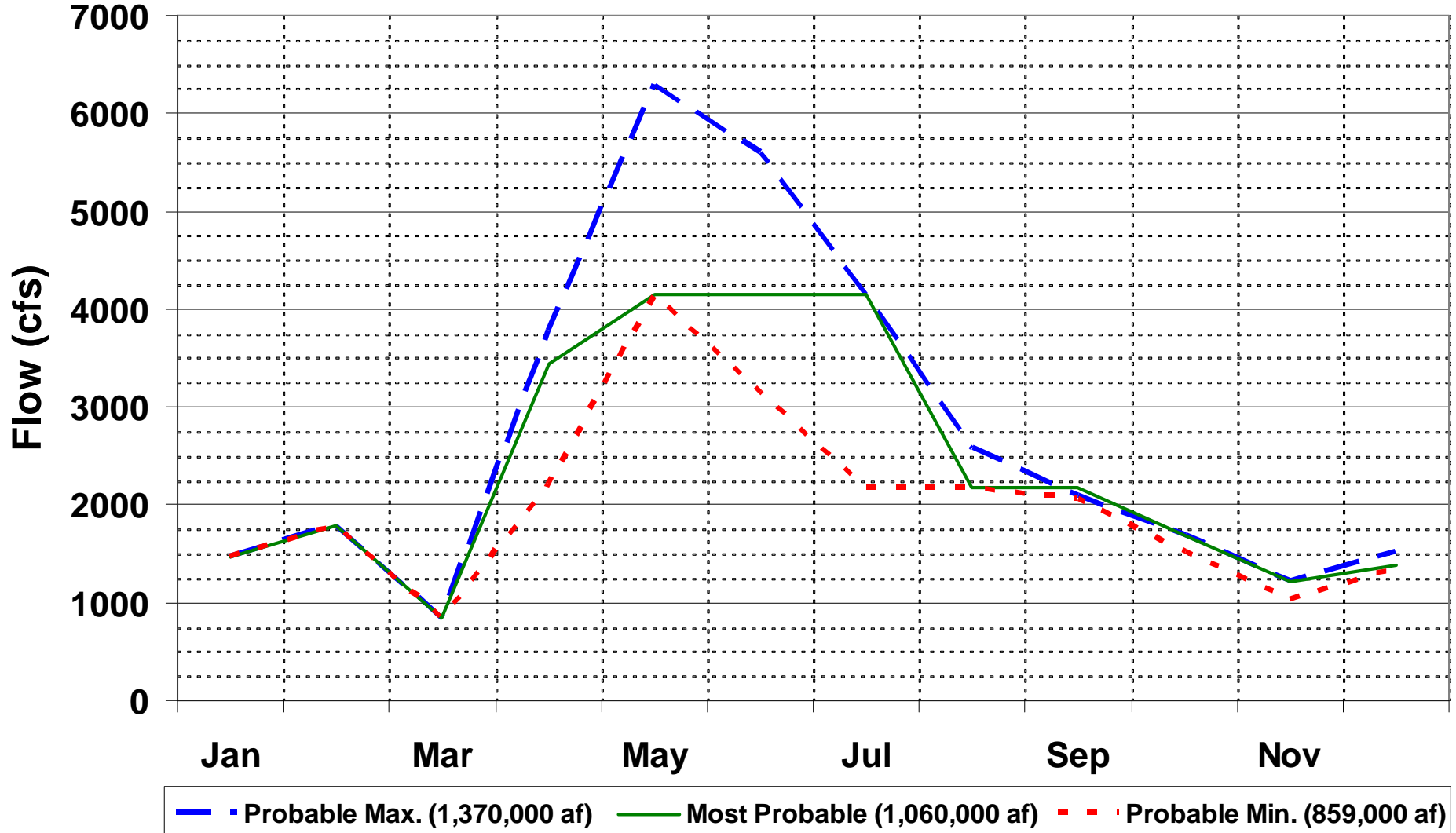
■ Probable Max. (1,370,000 af) ■ Most Probable (1,060,000 af) ■ Probable Min. (859,000 af)

Blue Mesa Content

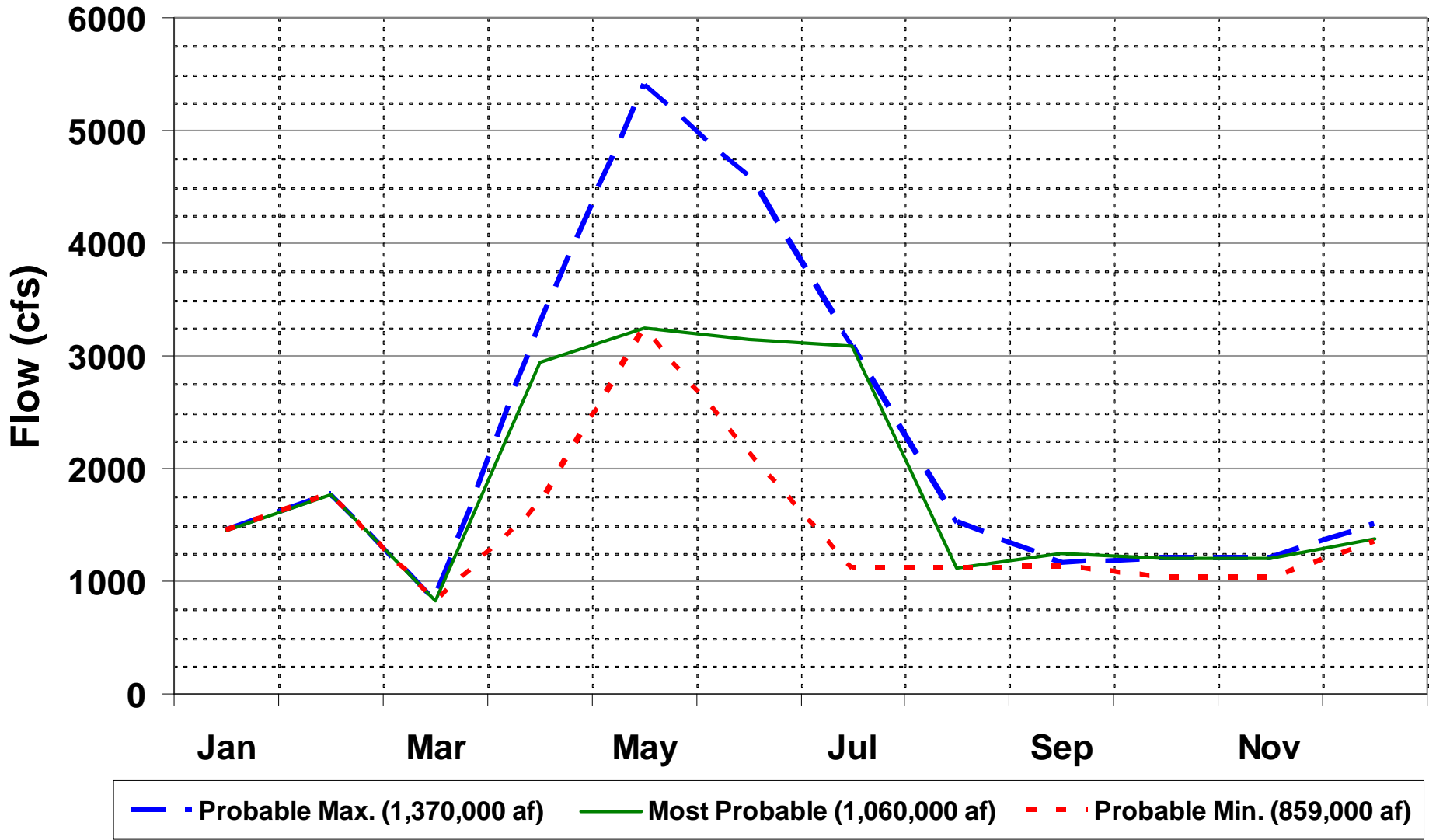
End of Month



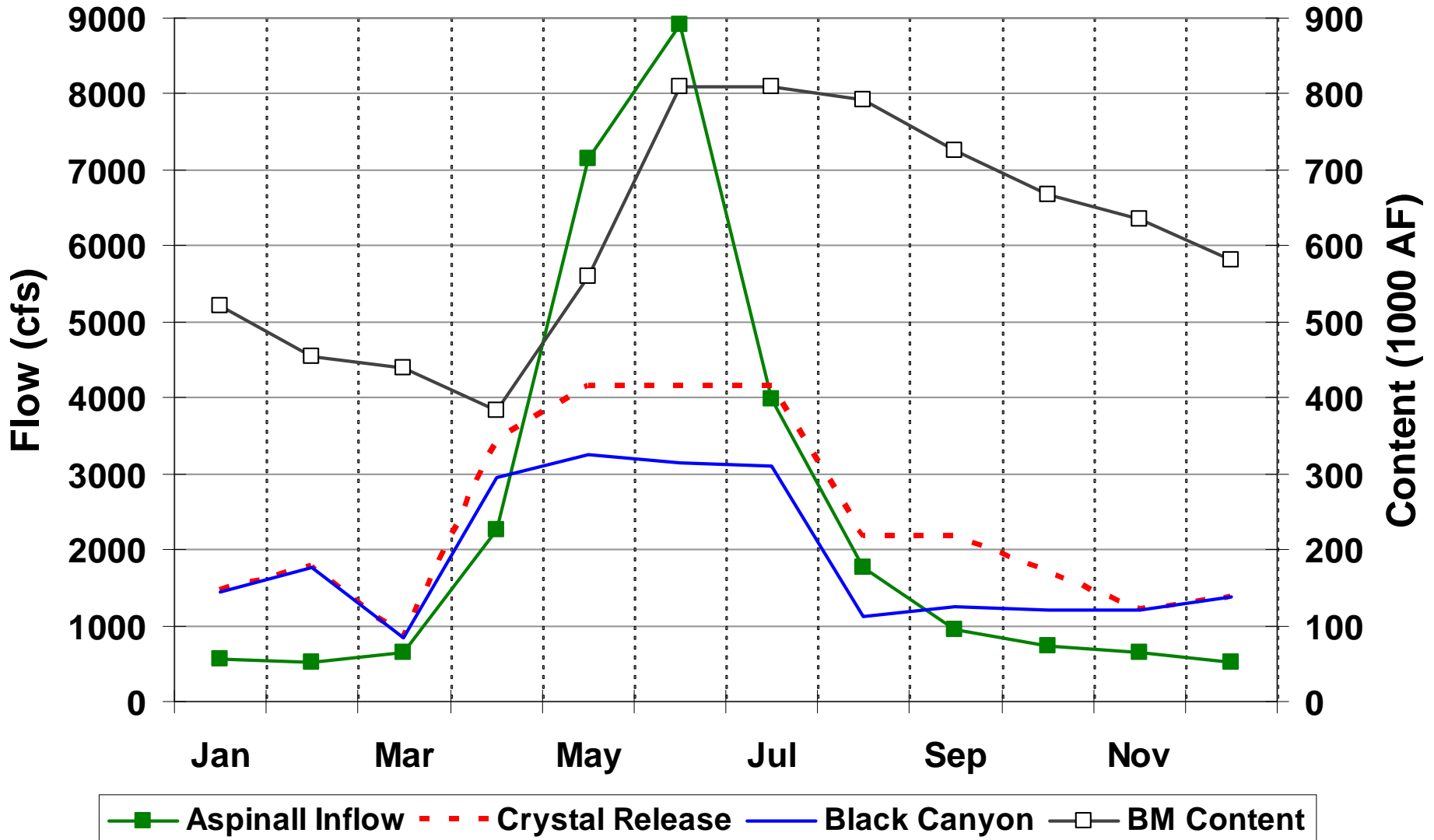
Crystal Release Monthly Average



Black Canyon Monthly Average

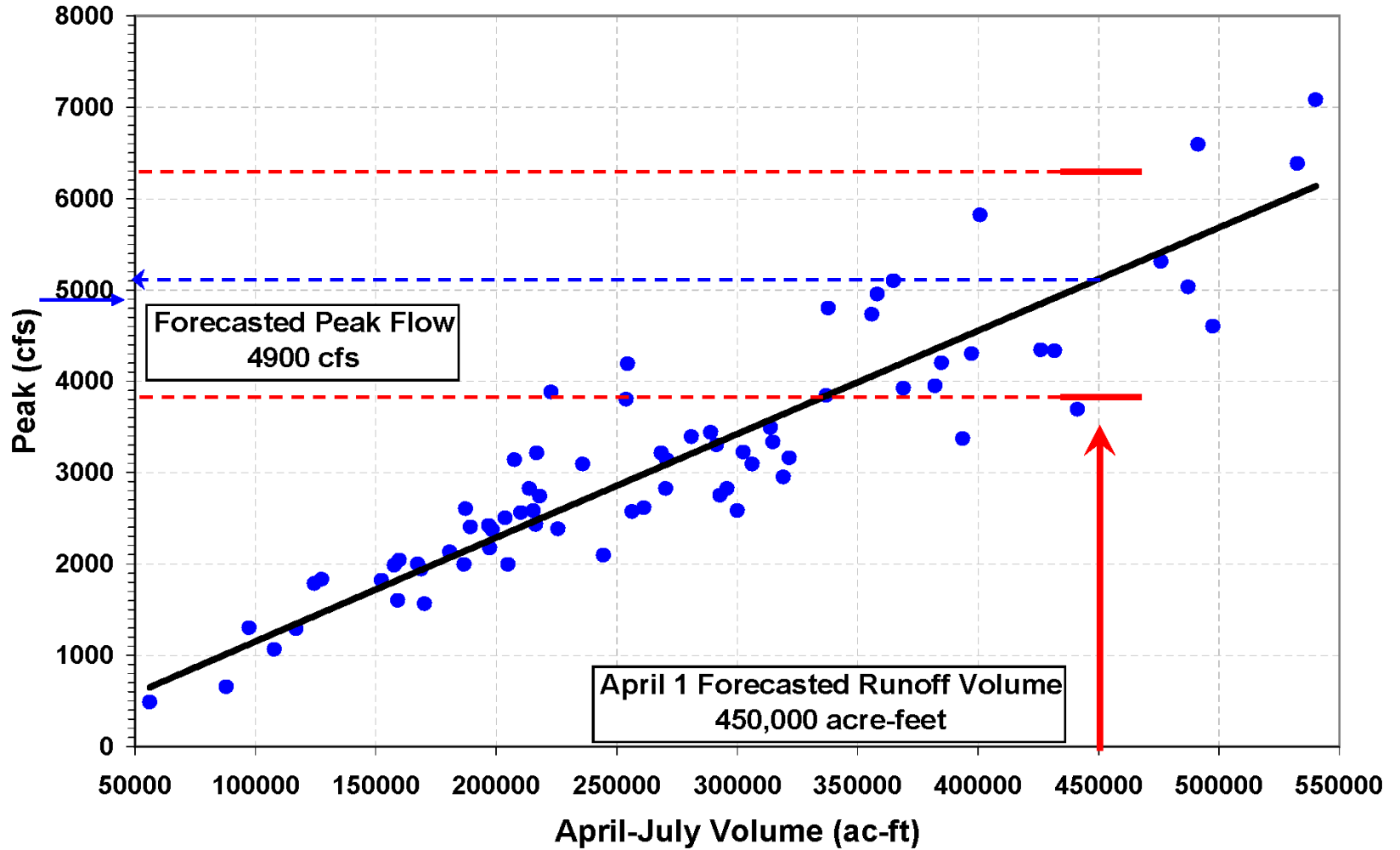


Most Probable Monthly Average



NORTH FORK RUNOFF

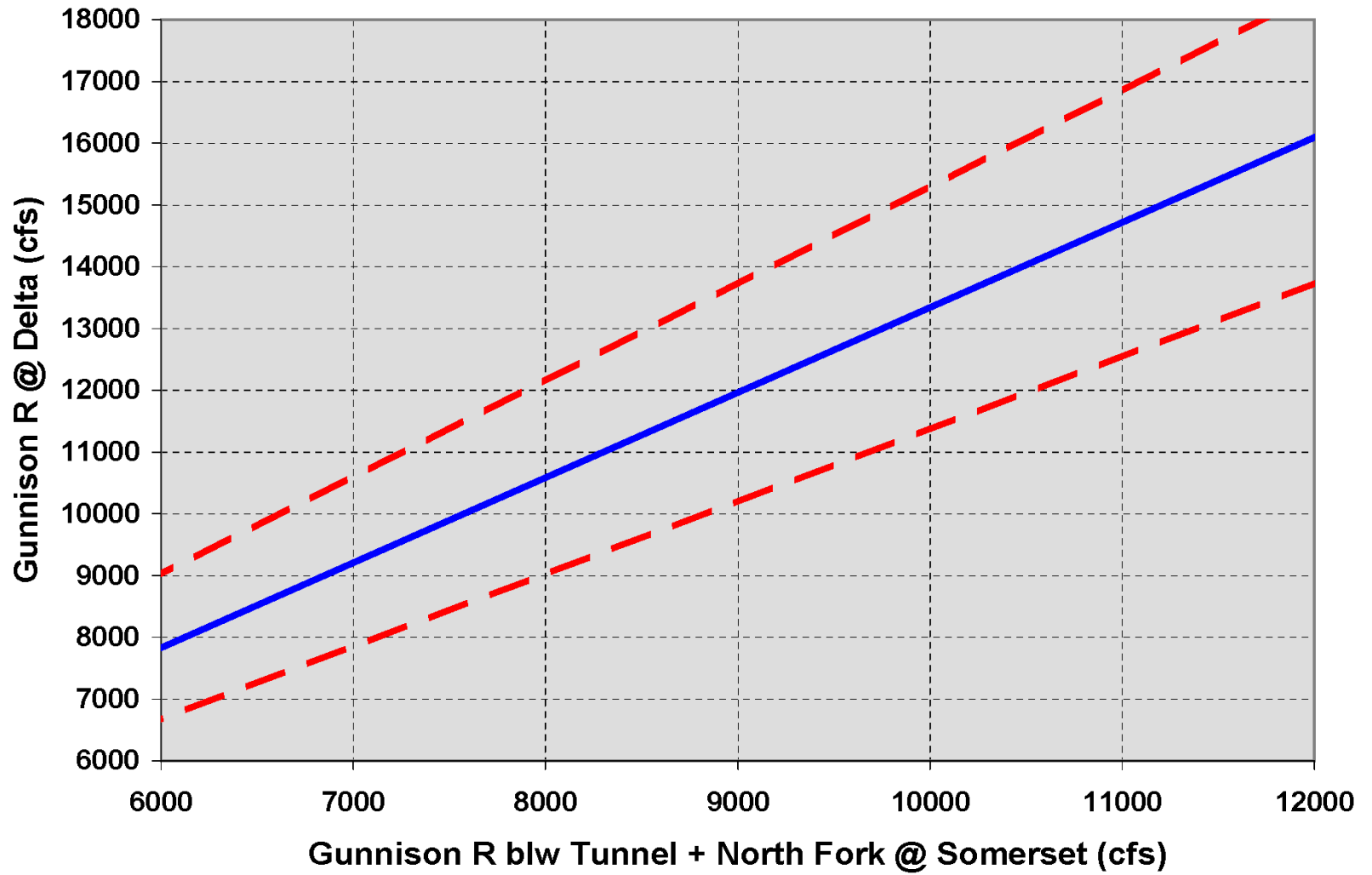
North Fork of the Gunnison River @ Somerset



North Fork Gunnison Peaks

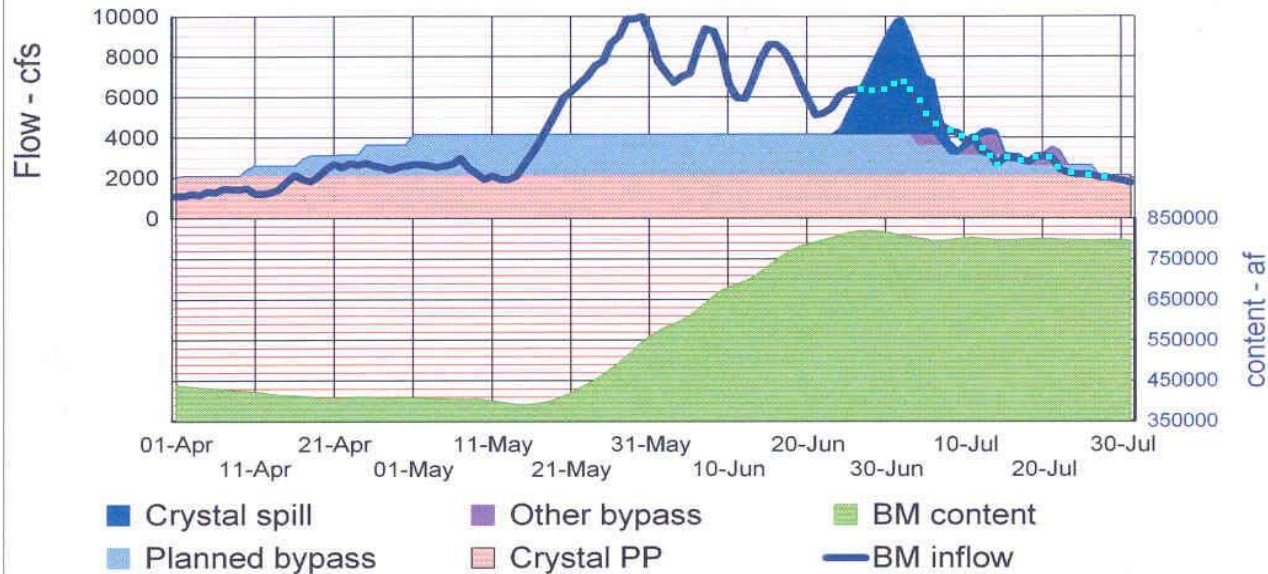
www.cbrfc.noaa.gov/product/peak/peak.cgi

Exceedence Prob.	90%	75%	50%	25%	10%
Somerset: average peak 3,310 cfs between 5/11 & 6/2					
CFSD	4000	4400	4900	5400	5900
Date of Peak	5/14	5/17	5/23	5/28	6/4
Cedaredge: average peak 210 cfs between 5/3 & 6/8					
CFSD	230	265	310	360	410
Date of Peak	5/14	5/18	5/23	5/29	6/5
Delta (minus flow from Crystal):					
CFSD	6000	6500	7200	8000	8750
Date of Peak	5/14	5/17	5/23	5/28	6/4



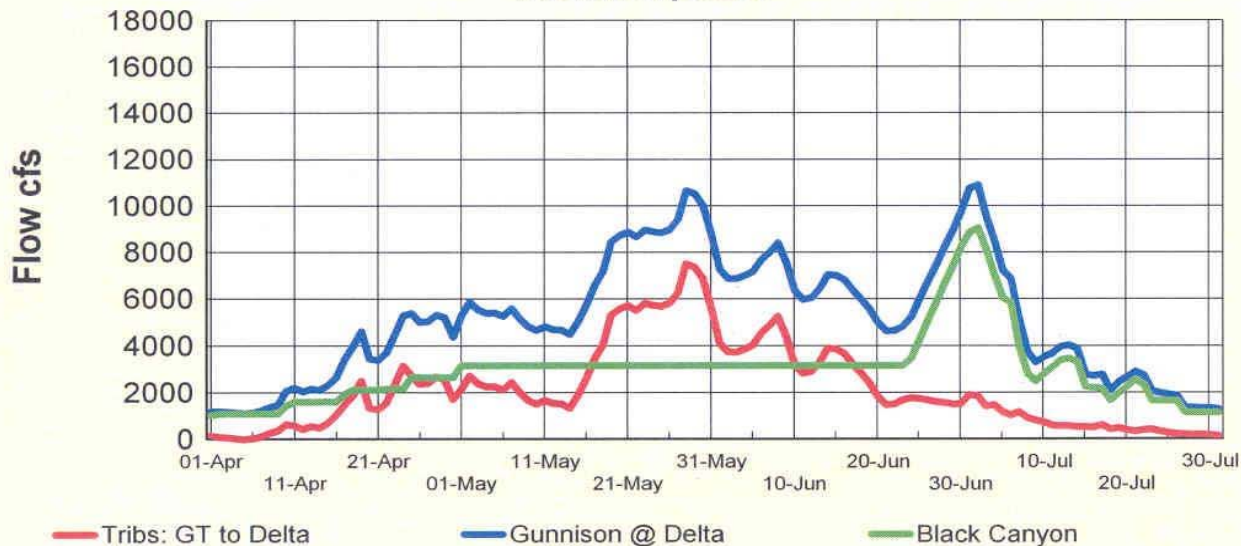
DAILY RUNOFF OPERATIONS

Proposed Operation w/ peak 1979 runoff pattern

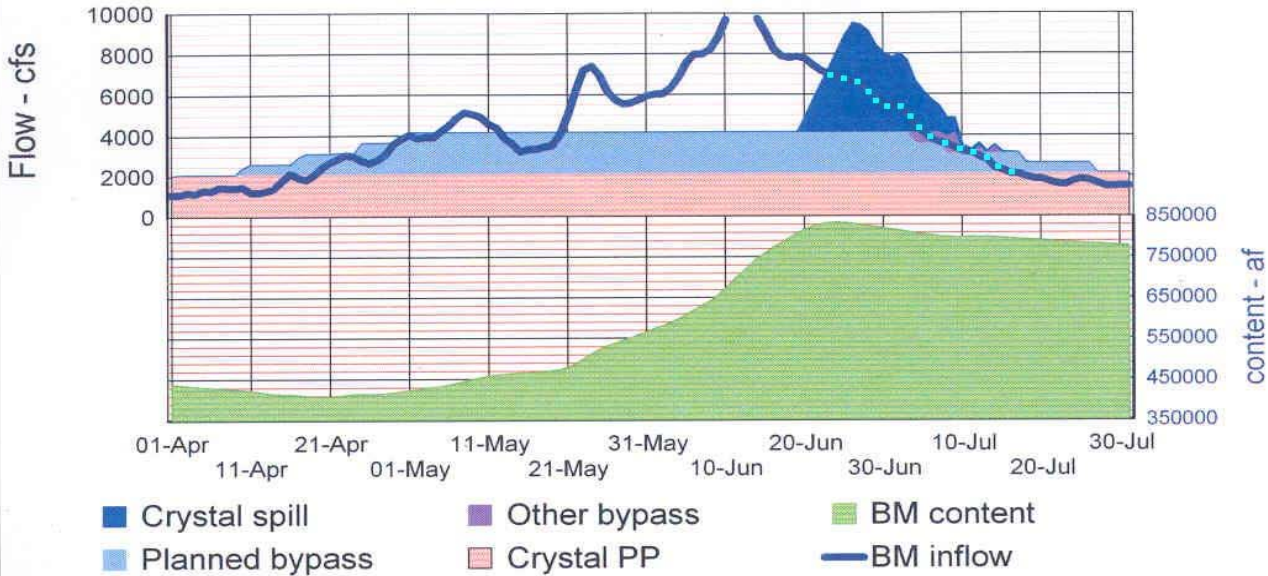


1,059,700	BM Unreg inflow
819,600	Max. BM content
7518.31	Max. BM elev.
792,400	July EOM content
7515.78	July EOM elev.
333,400	Planned bypass af
15,500	Other bypass af
97,400	Crystal spill af

Gunnison Basin 1979 runoff pattern

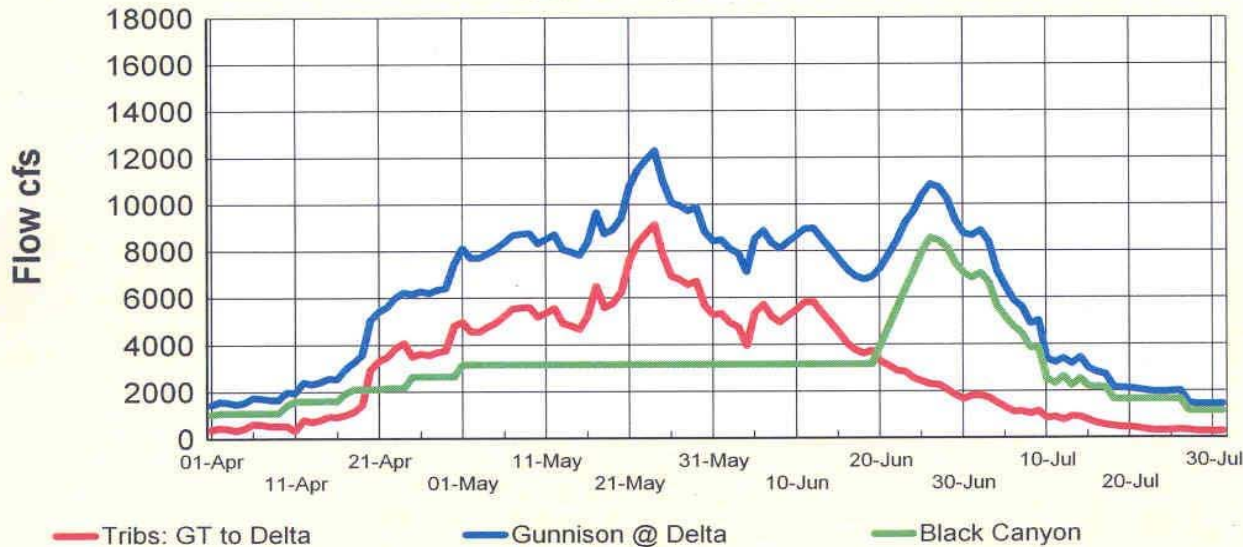


Proposed Operation w/ peak 1980 runoff pattern

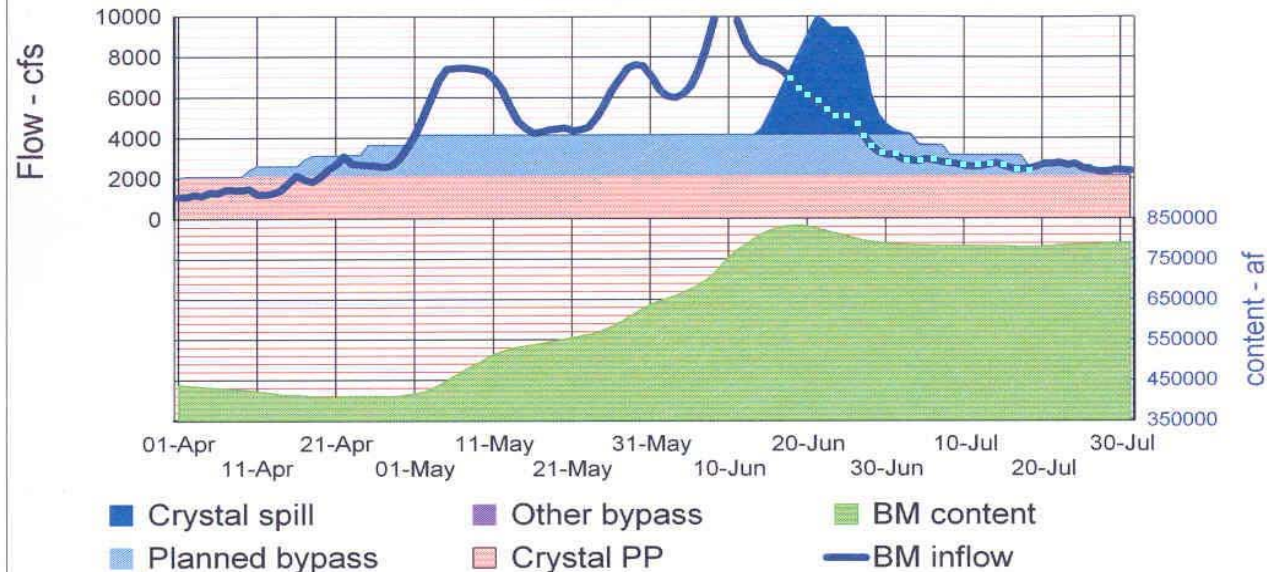


- 1,059,600** BM Unreg inflow
- 835,000** Max. BM content
- 7519.99** Max. BM elev.
- 772,900** July EOM content
- 7513.60** July EOM elev.
- 333,400** Planned bypass af
- 8,700** Other bypass af
- 122,500** Crystal spill af

Gunnison Basin 1980 runoff pattern

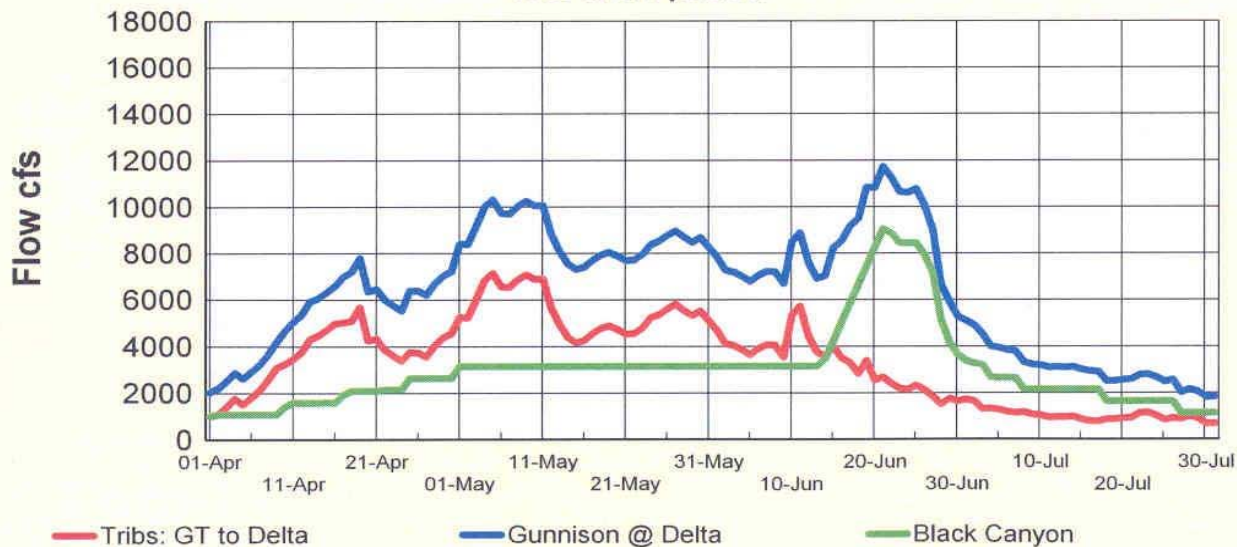


Proposed Operation w/ peak 1985 runoff pattern

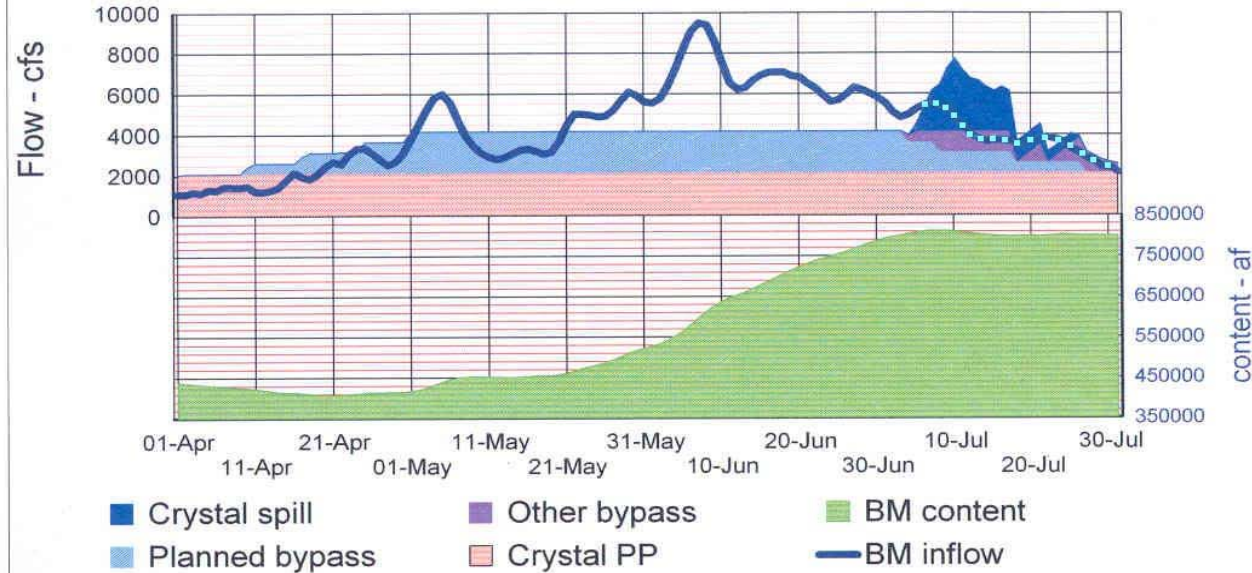


1,060,700	BM Unreg inflow
833,700	Max. BM content
7519.86	Max. BM elev.
787,900	July EOM content
7515.27	July EOM elev.
333,400	Planned bypass af
0	Other bypass af
117,400	Crystal spill af

Gunnison Basin 1985 runoff pattern

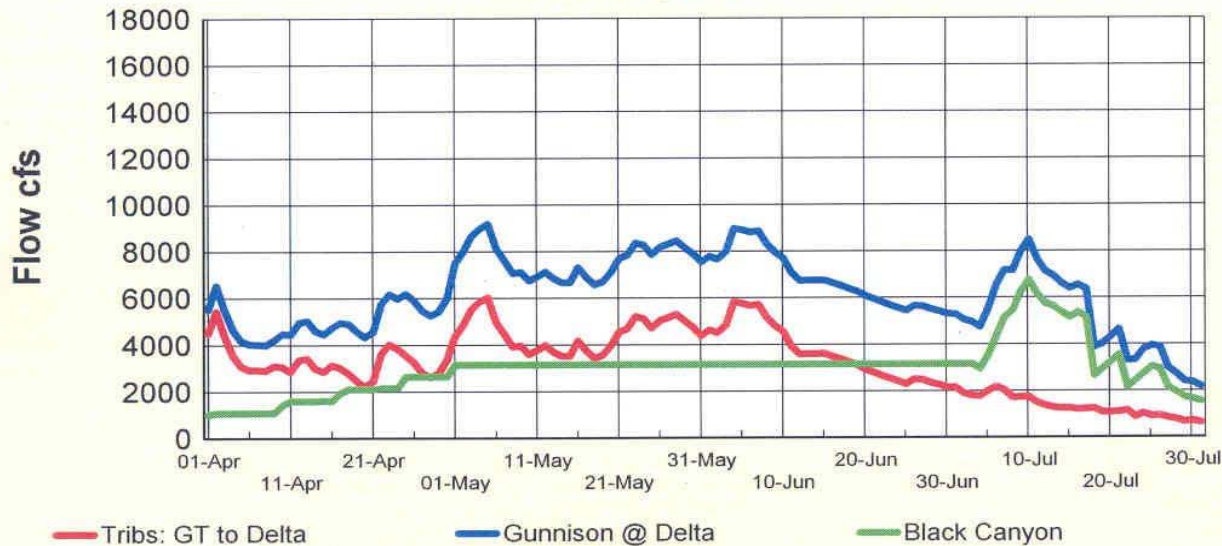


Proposed Operation w/ peak 1986 runoff pattern

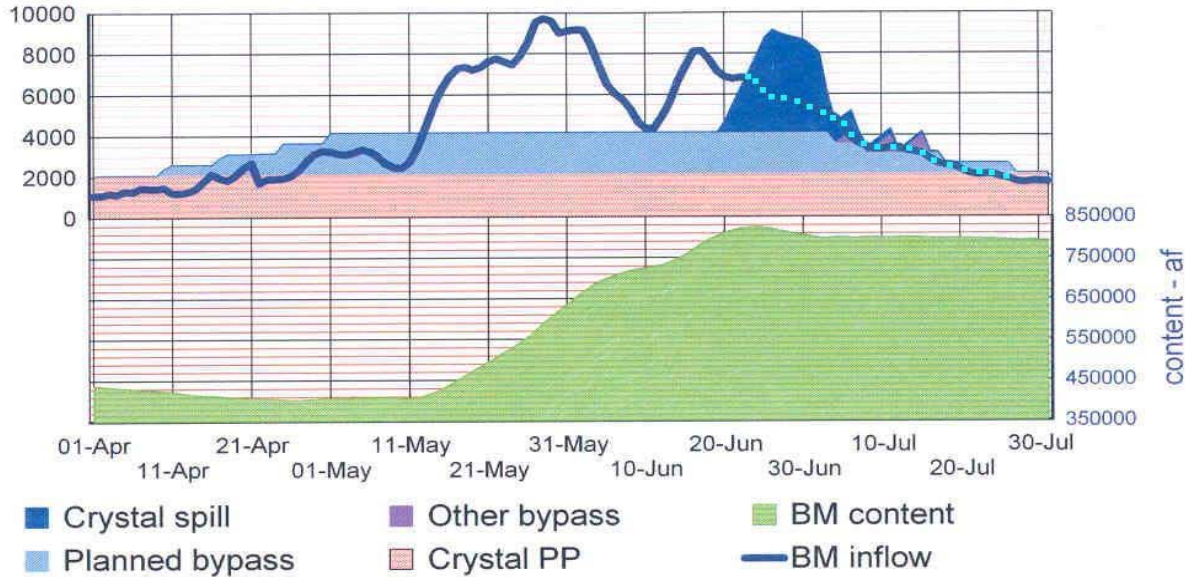


- 1,060,100** BM Unreg inflow
- 812,000** Max. BM content
- 7517.47** Max. BM elev.
- 795,800** July EOM content
- 7516.16** July EOM elev.
- 333,400** Planned bypass af
- 39,500** Other bypass af
- 69,800** Crystal spill af

Gunnison Basin 1986 runoff pattern

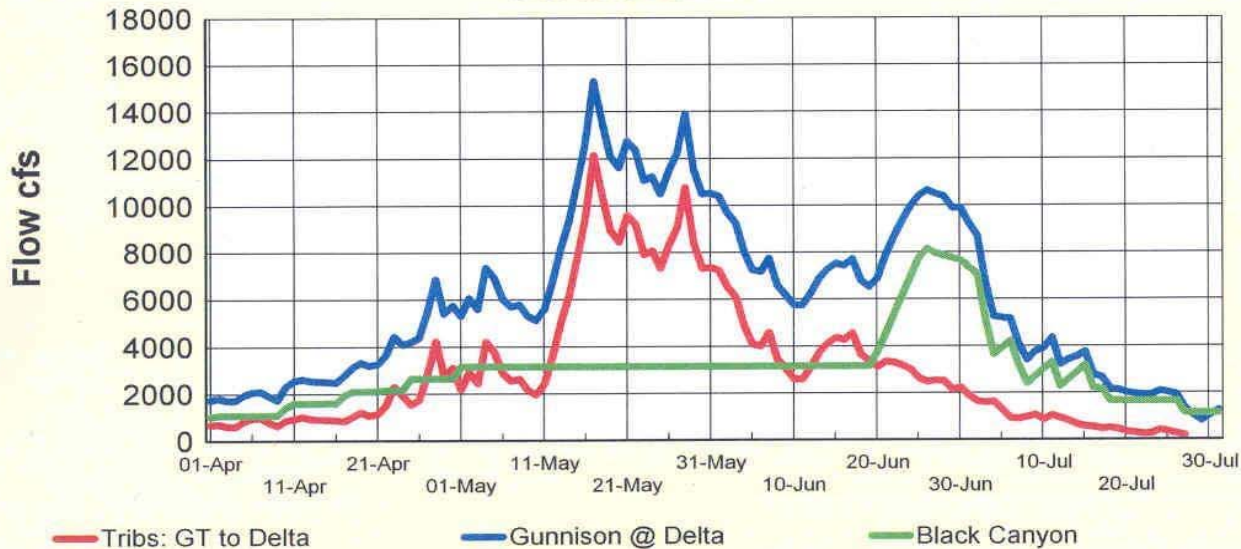


Proposed Operation w/ peak 1993 runoff pattern

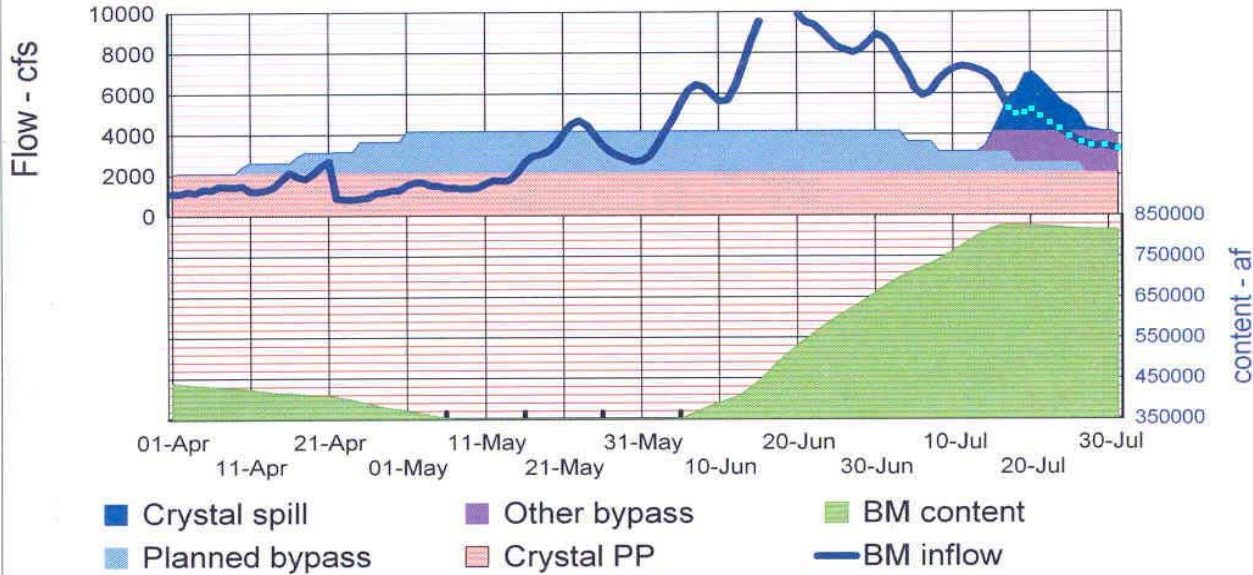


- 1,059,700** BM Unreg inflow
- 825,800** Max. BM content
- 7519.00** Max. BM elev.
- 787,200** July EOM content
- 7515.20** July EOM elev.
- 333,400** Planned bypass af
- 8,700** Other bypass af
- 108,200** Crystal spill af

Gunnison Basin 1993 runoff pattern



Proposed Operation w/ peak 1995 runoff pattern

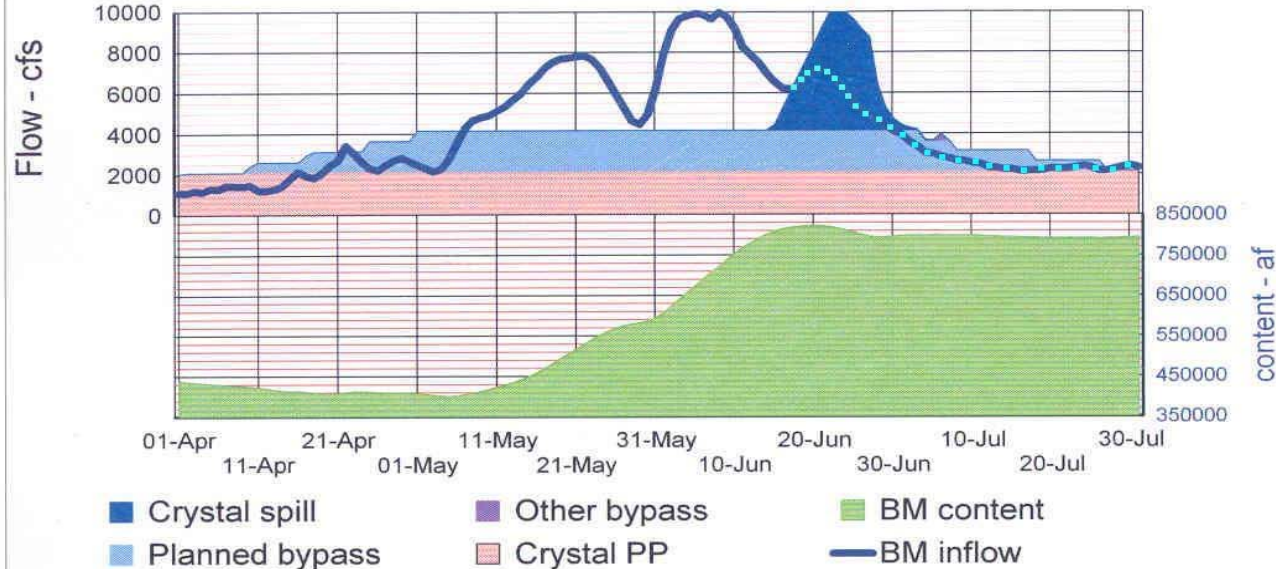


- 1,060,000** BM Unreg inflow
- 826,600** Max. BM content
- 7519.08** Max. BM elev.
- 811,000** July EOM content
- 7517.84** July EOM elev.
- 333,400** Planned bypass af
- 52,800** Other bypass af
- 41,300** Crystal spill af

Gunnison Basin 1995 runoff pattern

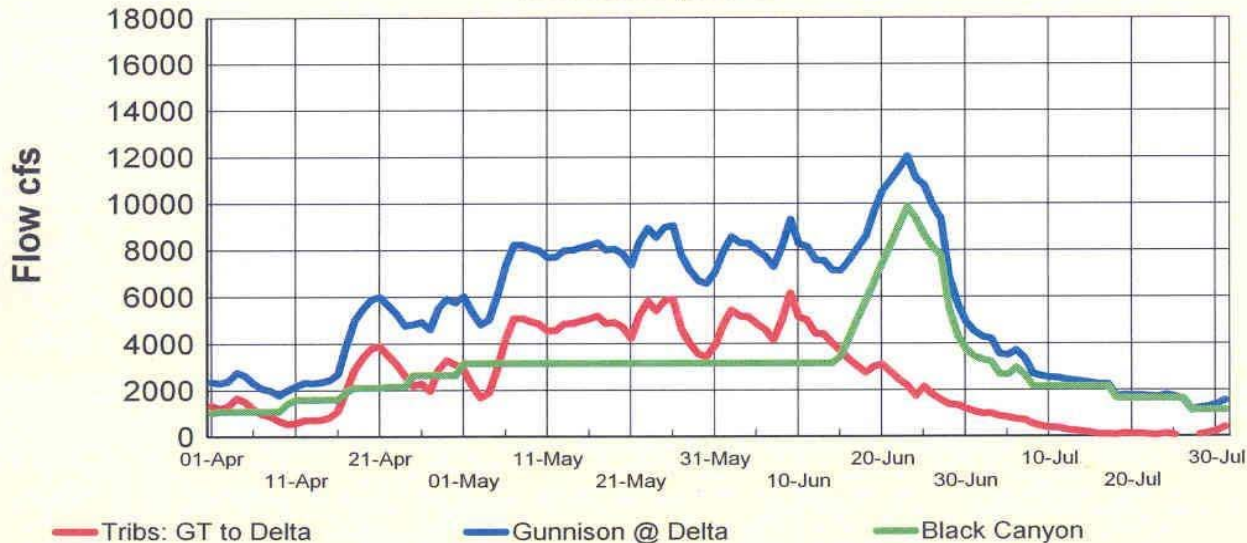


Proposed Operation w/ peak 1997 runoff pattern



- 1,059,900** BM Unreg inflow
- 823,200** Max. BM content
- 7518.70** Max. BM elev.
- 790,500** July EOM content
- 7515.57** July EOM elev.
- 333,400** Planned bypass af
- 600** Other bypass af
- 113,900** Crystal spill af

Gunnison Basin 1997 runoff pattern



Gunnison River Basin Time Series Snowpack Summary

Based on Provisional SNOTEL data as of Apr 22, 2008

