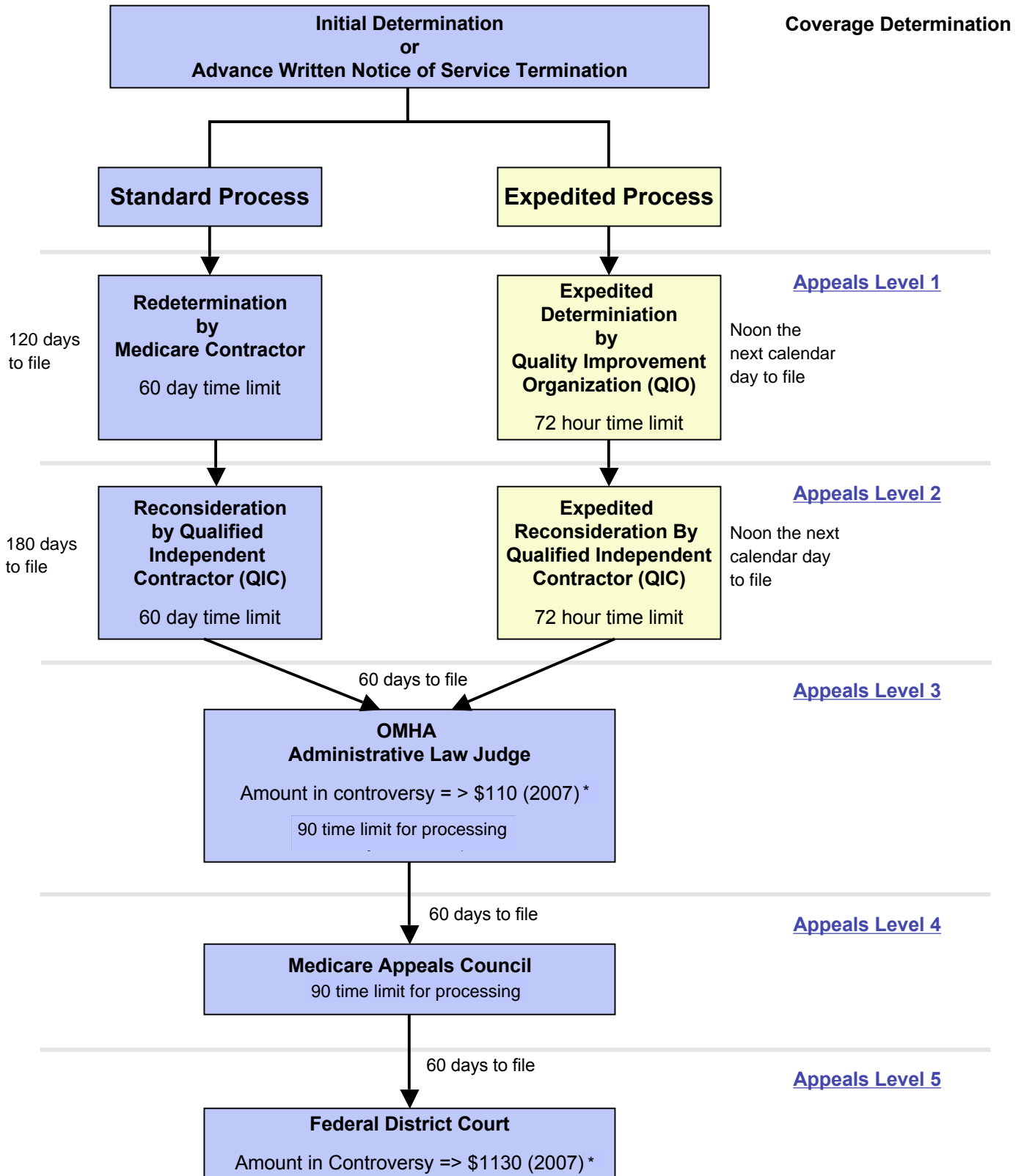


Original Medicare (Parts A & B) Appeals Process

The following chart provides an overview of the appeals process for Original Medicare (Parts A&B). For more information on each level, click on the level name on the left hand side of this document or visit <http://www.hhs.gov/omha/>



*The AIC requirement for an ALJ hearing and Federal District Court is adjusted annually in accordance with the medical care component of the Consumer Price Index.