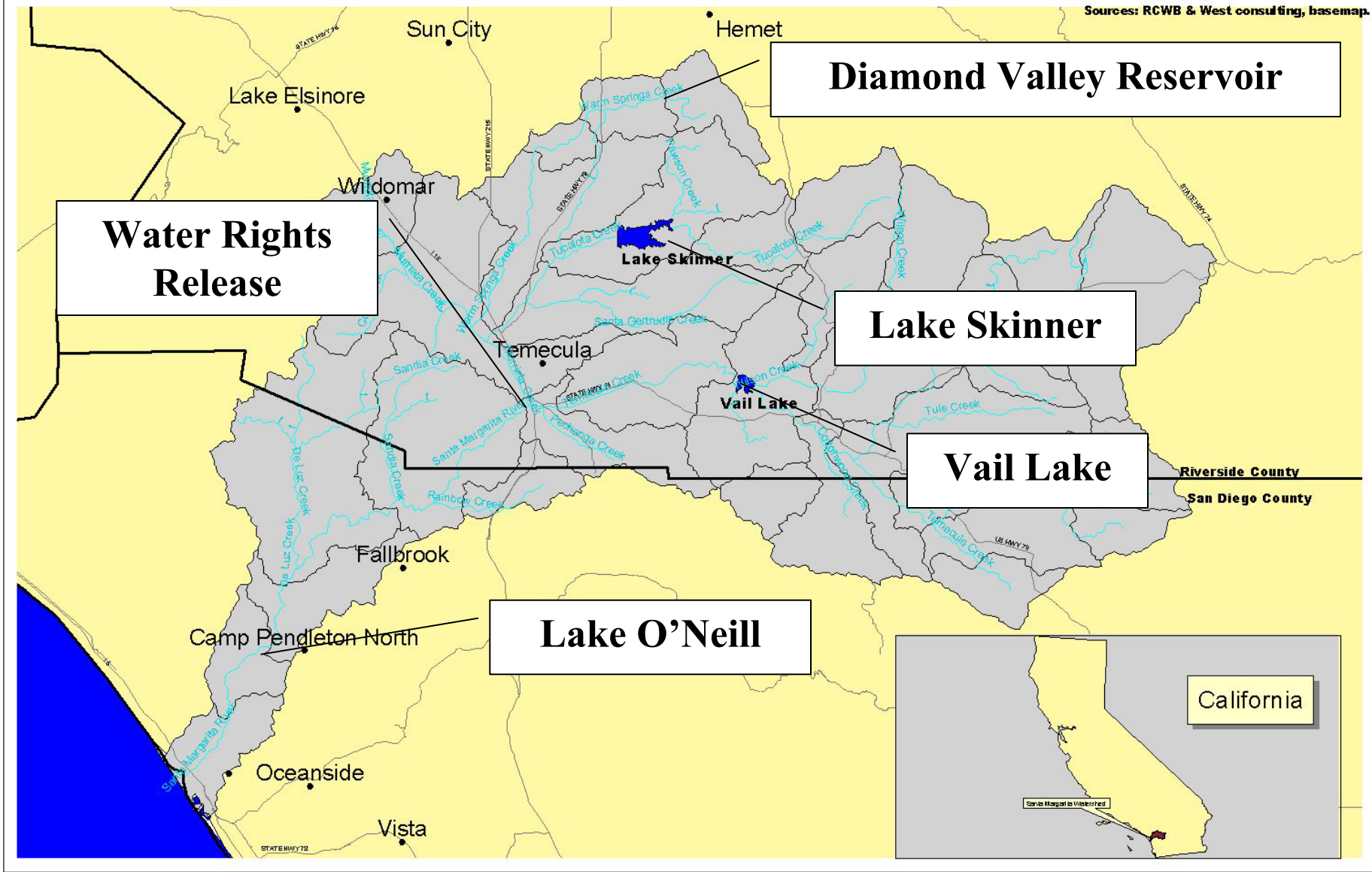


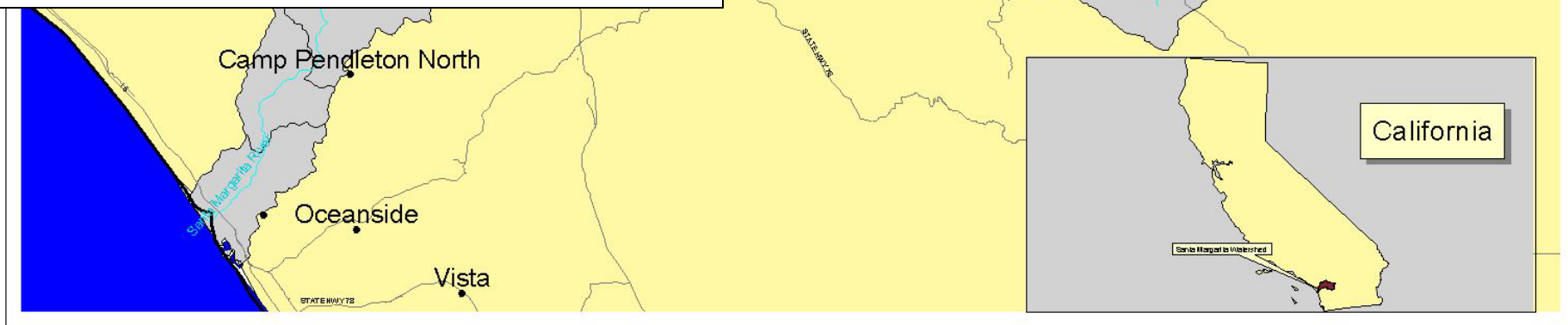
Appendix B

Reservoir Control Information



Vail Lake

- Operated to min el. 1435
- Storage 40,000 AF Nov 1 – Apr 30
- Releases any time
 - Spreading grounds 1.5 mi. DS
 - Normally limited to spreading capacity 20cfs
 - Little flood release: only 2 spills since late 40s
- Quality impacted by evaporation of 3,500 AFY



4 0 4 8 Miles

Scale

Legend

- City
- Highway
- Stream
- Water Body
- Santa Margarita Sub Watershed Boundary

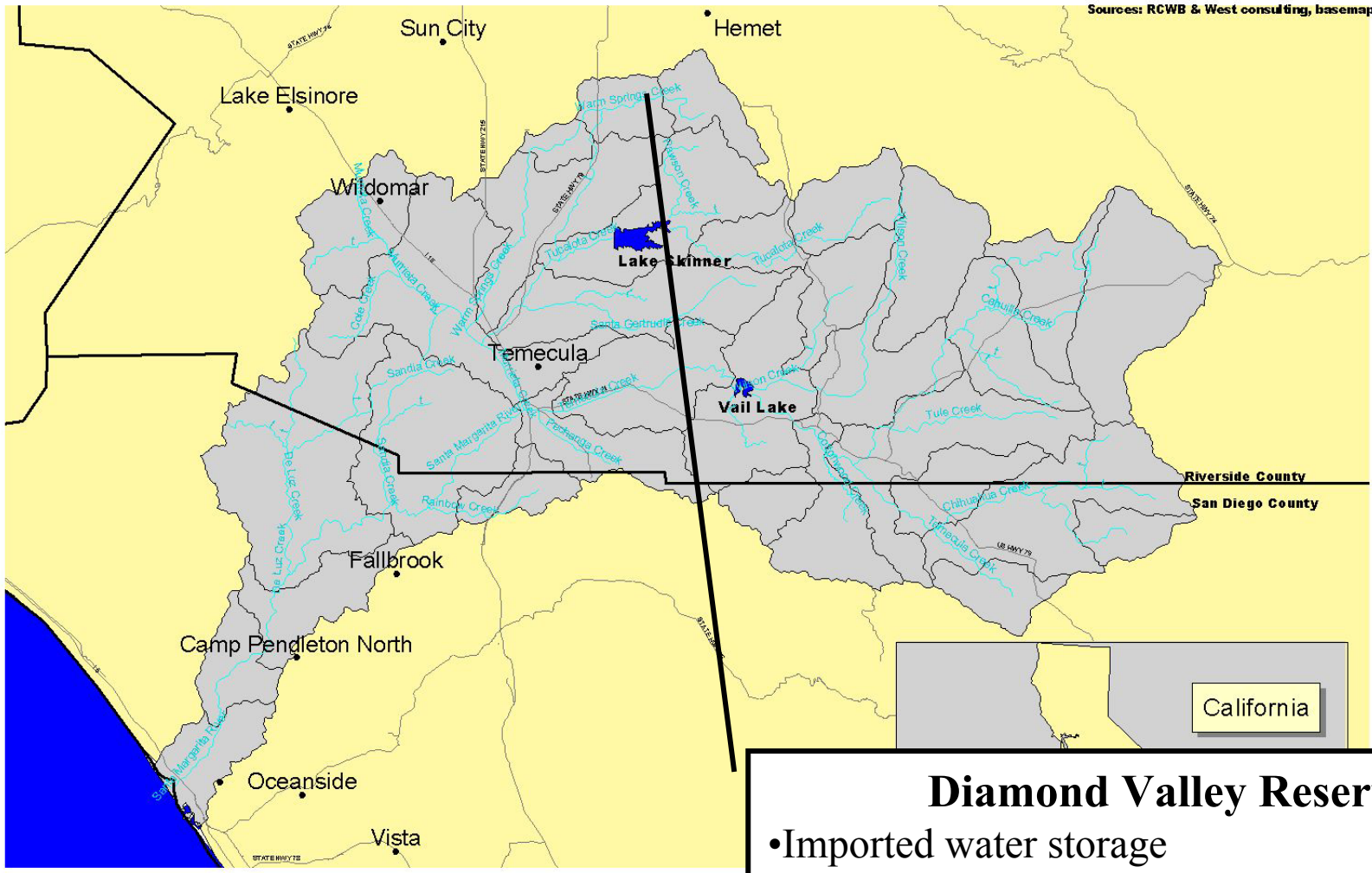


Figure 1 -1
Location Map
Santa Margarita Watershed

CDM

Camp Dresser & McKee Inc.



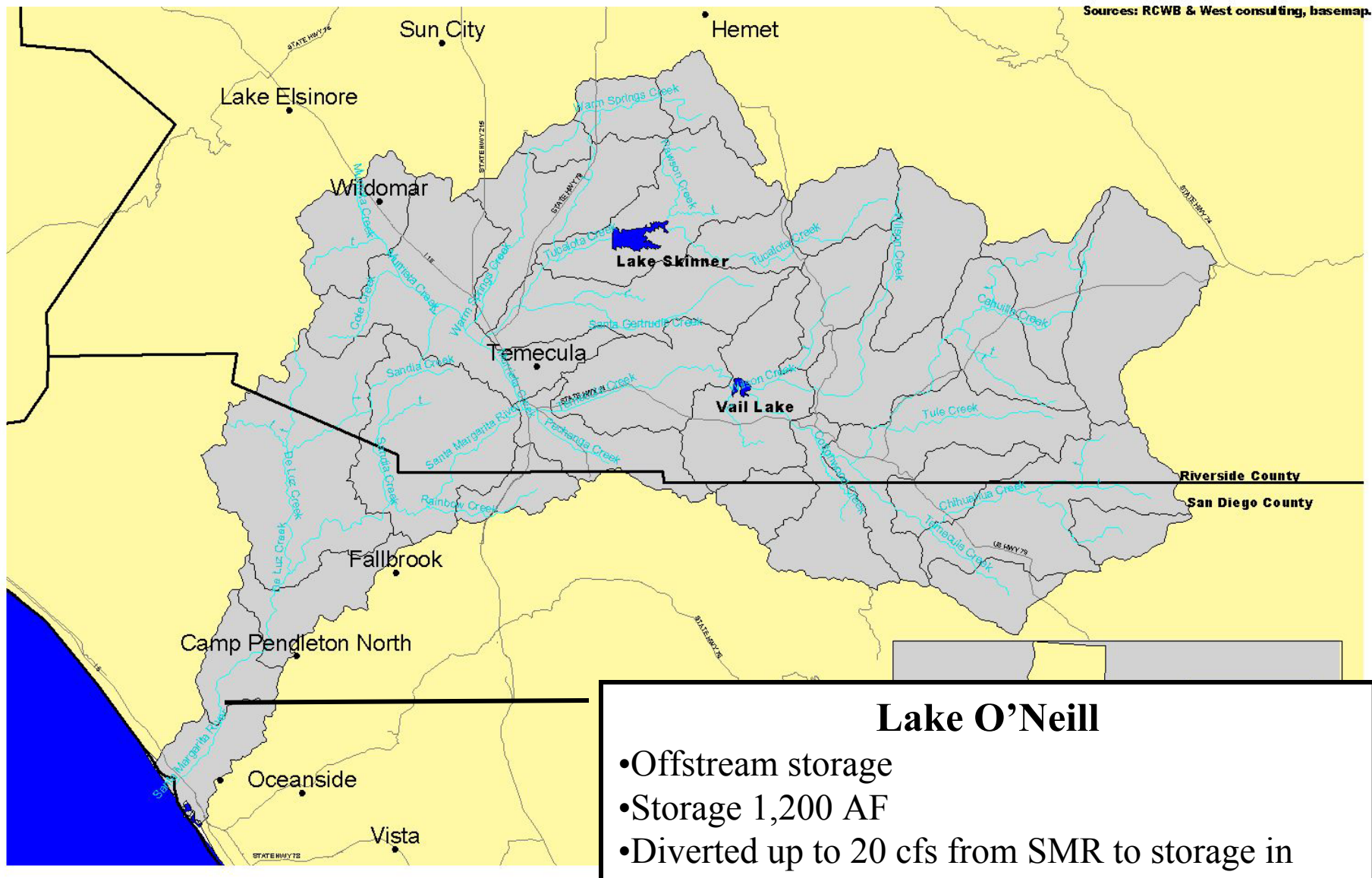


Diamond Valley Reservoir

- Imported water storage
- Storage 800,000 AF
- Releases of local inflow of 17 mi² drainage area up to 50 cfs
- Quality of MWDSC water



- Legend
- City
 - Highway
 - ~ Stream
 - Water Body
 - Santa Margarita Sub Watershed



Lake O'Neill

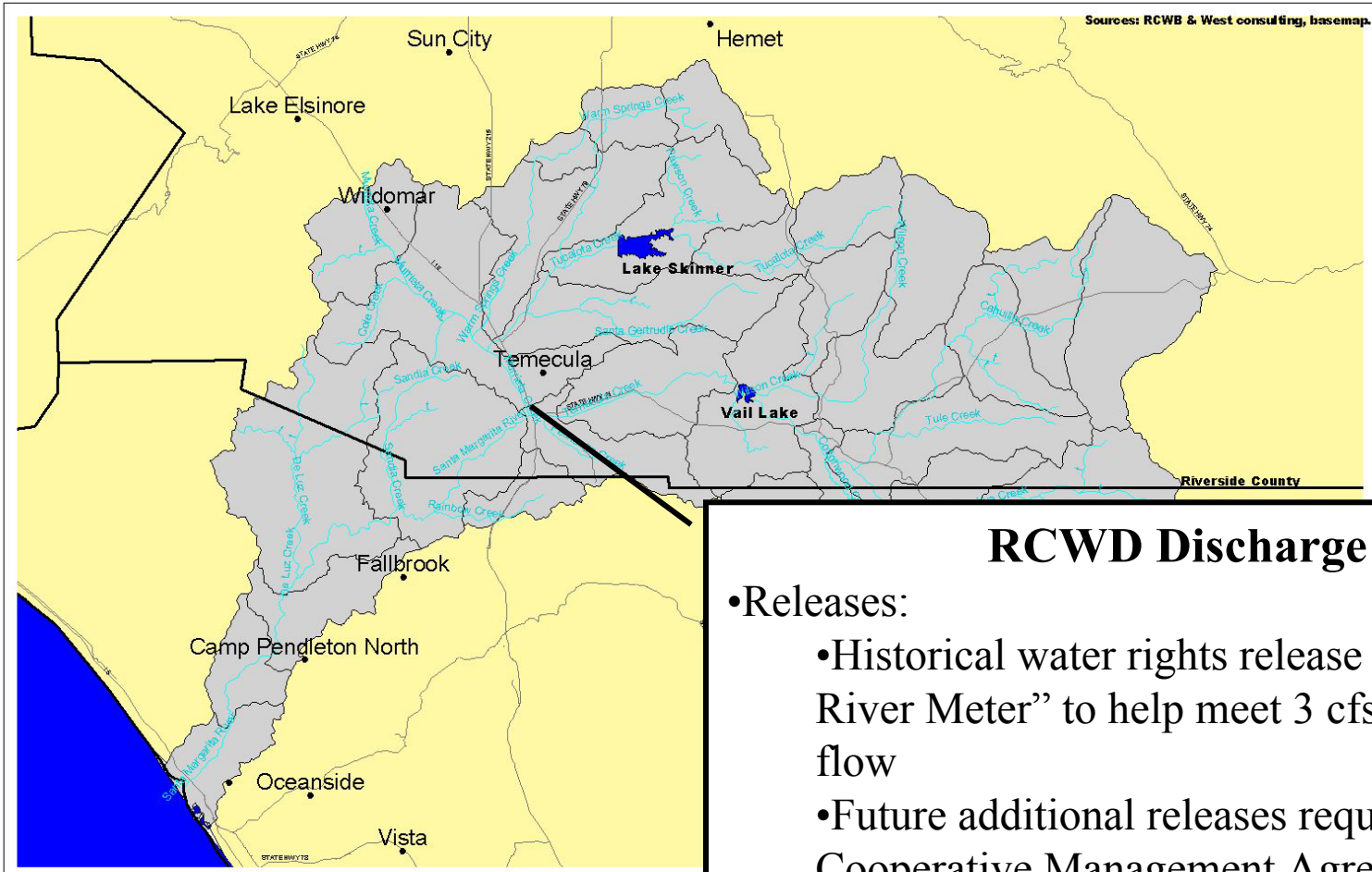
- Offstream storage
- Storage 1,200 AF
- Diverted up to 20 cfs from SMR to storage in spring
- Released in late fall 8 –10 cfs for recharge
- Somewhat lower quality due to evaporation



Scale

Legend

- City
- Highway
- ~ Stream
- Water Body
- Santa Margarita Sub Watershed Boundary



Sources: RCWB & West consulting, basemap.

RCWD Discharge

- Releases:
 - Historical water rights release from “System River Meter” to help meet 3 cfs minimum flow
 - Future additional releases required under Cooperative Management Agreement from MWDSC facilities discharge
- Quality:
 - Currently mixture of local GW & MWDSC water
 - Future MWDSC water



CDM
Camp Dresser & McKee Inc.



Legend
 • City
 Highway
 Stream
 Water Body
 Santa Margarita Sub Watershed

