

Flight Progress Strips (FPS 2000)



Version 1.0
May 9, 2007

A component of:

SIGNAL

Simulation and Integration of Ground, Network, and Air Links

Status:

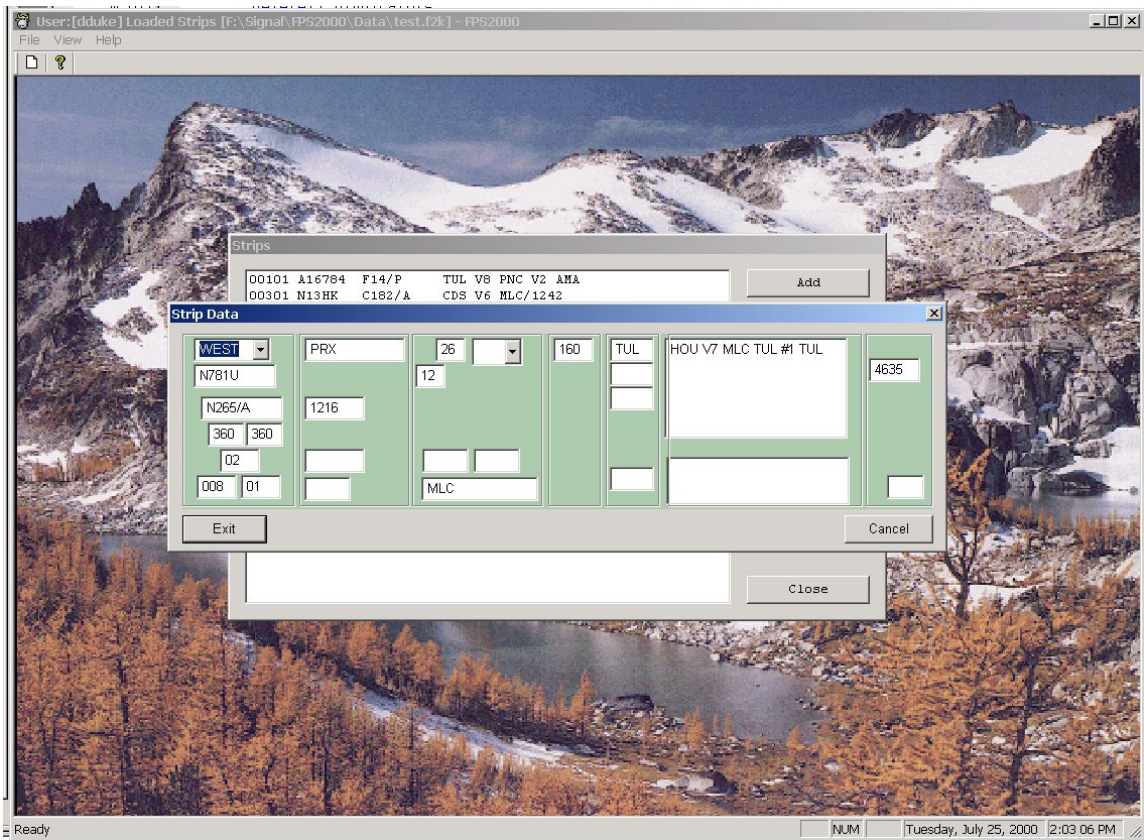
Operational

Connections:

None

Overview:

This software is used as a offline strip generation program by the EnRoute non-radar instructors. This software is not connected to the simulation but is capable of loading both OpenCREATE and Create2000 generated strips.



FPS Screenshot