

**Computer refined EnRoute and
Terminal Enhancement Program
(Create2000)**



Version 1.0
October 29, 2007

A component of:

SIGNAL

Simulation and Integration of Ground, Network, and Air Links

Status:

Operational (August 2000)

Connections:

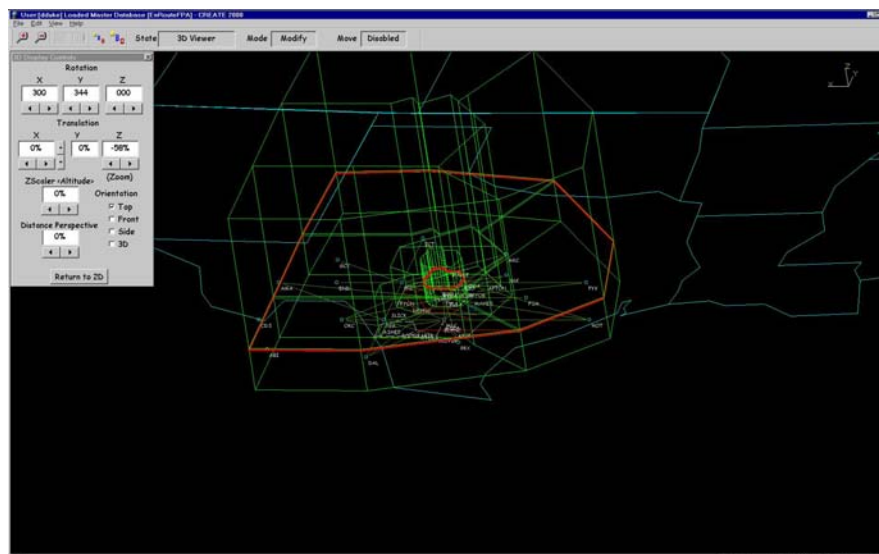
None

Overview:

Create2000 is the current scenario generation tools for SIGNAL. Create2000 allows the user to define the world that the simulation is to work in and then add flights and events to accomplish to training objectives. Additional information can be found in the Library. Reference the [Create2000 Data Dictionary](#), [Create2000 Reference Manual](#) and the [Create2000 Users Manual](#).

History:

- Create2000 is the 4th version of the CREATE software. Create2000 will provide a means to continue enhancing the SIGNAL product line for many years.
- OpenCREATE, the 3rd version, came online in 1995. It is written in C using X and MOTIF. Several years back it was moved to a PC platform and Microsoft Windows NT and has been a good product. Thousands of scenarios have been created, modified and maintained using this software.
- CREATE II was also written in FORTRAN and was used for 1989-1995.
- CREATE Version 1.0 was written in FORTRAN on a DIGITAL GPX machine running VMS, 1987-1989.



Create2000 Screenshot