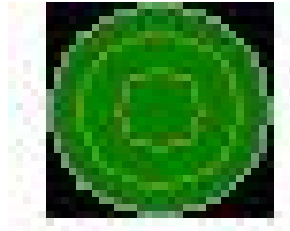


## CONTROL



Version 1.0  
May 9, 2007

A component of:

**SIGNAL**

Simulation and Integration of Ground, Network, and Air Links

**Status:**

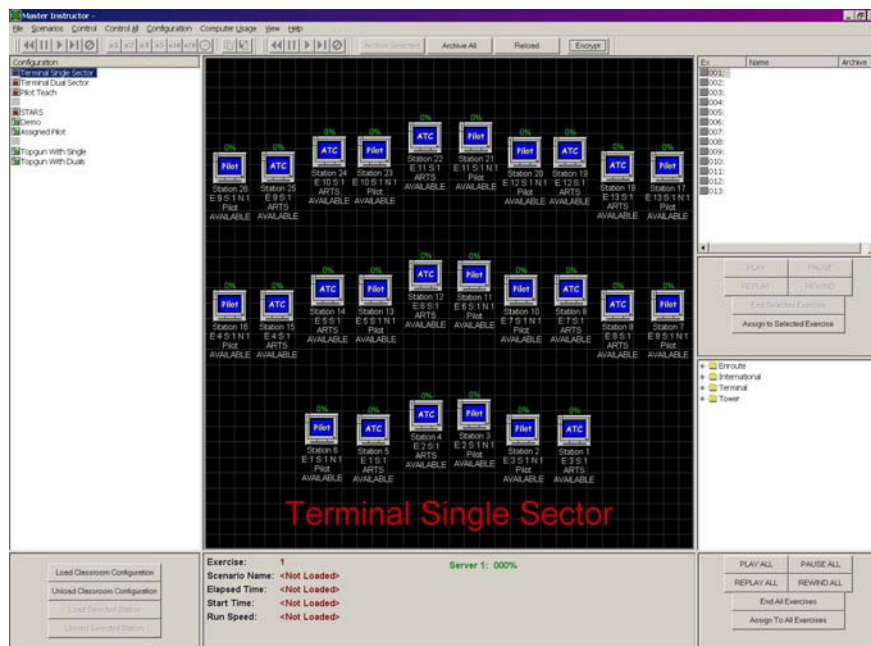
Operational

**Connections:**

Connects to student PC using RPC services.

**Overview:**

Control drives RPCServ to Reboot, Auto login, Start/Stop SIGNAL components. It also monitors the Student PC to determine condition/state. This piece resides on the Master Instructor's Station.



Control Screenshot