

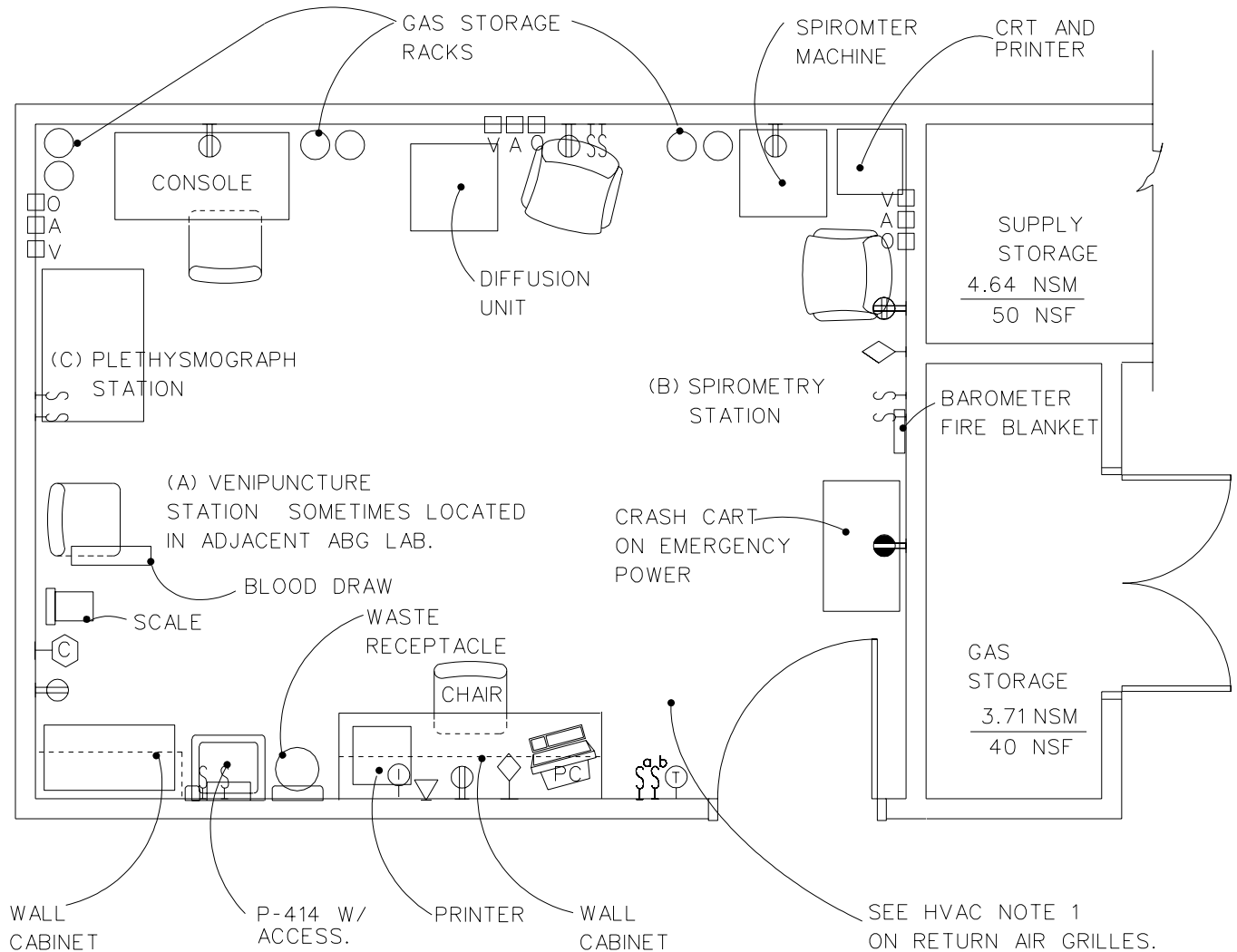
## Section 5

# Design Guide Plates and Data Sheets: Patient Care Areas

Guide Plate Series	Plate Number
Ventilatory Test Room / Spirometry	
Equipment & Utility Plan.....	5 - 1
Reflected Ceiling Plan.....	5 - 1
Design Standards.....	5 - 1
Equipment Guide List.....	5 - 1
Blood Gas Analysis Room	
Equipment & Utility Plan.....	5 - 2
Reflected Ceiling Plan.....	5 - 2
Design Standards.....	5 - 2
Equipment Guide List.....	5 - 2
Exercise Room w/Patient Toilet & Shower	
Equipment & Utility Plan.....	5 - 3
Reflected Ceiling Plan.....	5 - 3
Design Standards.....	5 - 3
Equipment Guide List.....	5 - 3
Special Procedures/Bronchoscopy Room	
Equipment & Utility Plan.....	5 - 4
Reflected Ceiling Plan.....	5 - 4
Design Standards.....	5 - 4
Equipment Guide List.....	5 - 4
Sleep Study Suite w/ Patient Toilet & Shower	
Equipment & Utility Plan.....	5 - 5
Reflected Ceiling Plan.....	5 - 5
Design Standards.....	5 - 5
Equipment Guide List.....	5 - 5
Sleep Study Suite / Diagnostic Room	
Equipment & Utility Plan.....	5 - 6
Reflected Ceiling Plan.....	5 - 6
Design Standards.....	5 - 6
Equipment Guide List.....	5 - 6

# Ventilatory Test Room/Spirometry Equipment & Utility Plan

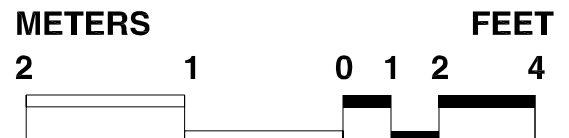
FINAL DRAFT 9-26-95  
REVISED FEBRUARY 1997



NOTES:

1. CHECK PROGRAM FOR NEED OF PLETHYSMOGRAPH.
2. HELIUM DILUTION LUNG VOLUME MEASUREMENT MAYBE USED INSTEAD OF PLETHYSMOGRAPH. HELIUM/OXYGEN TANK STORAGE IS REQUIRED.
3. VENIPUNCTURE FREQUENTLY LOCATED IN ADJACENT AGB LAB.

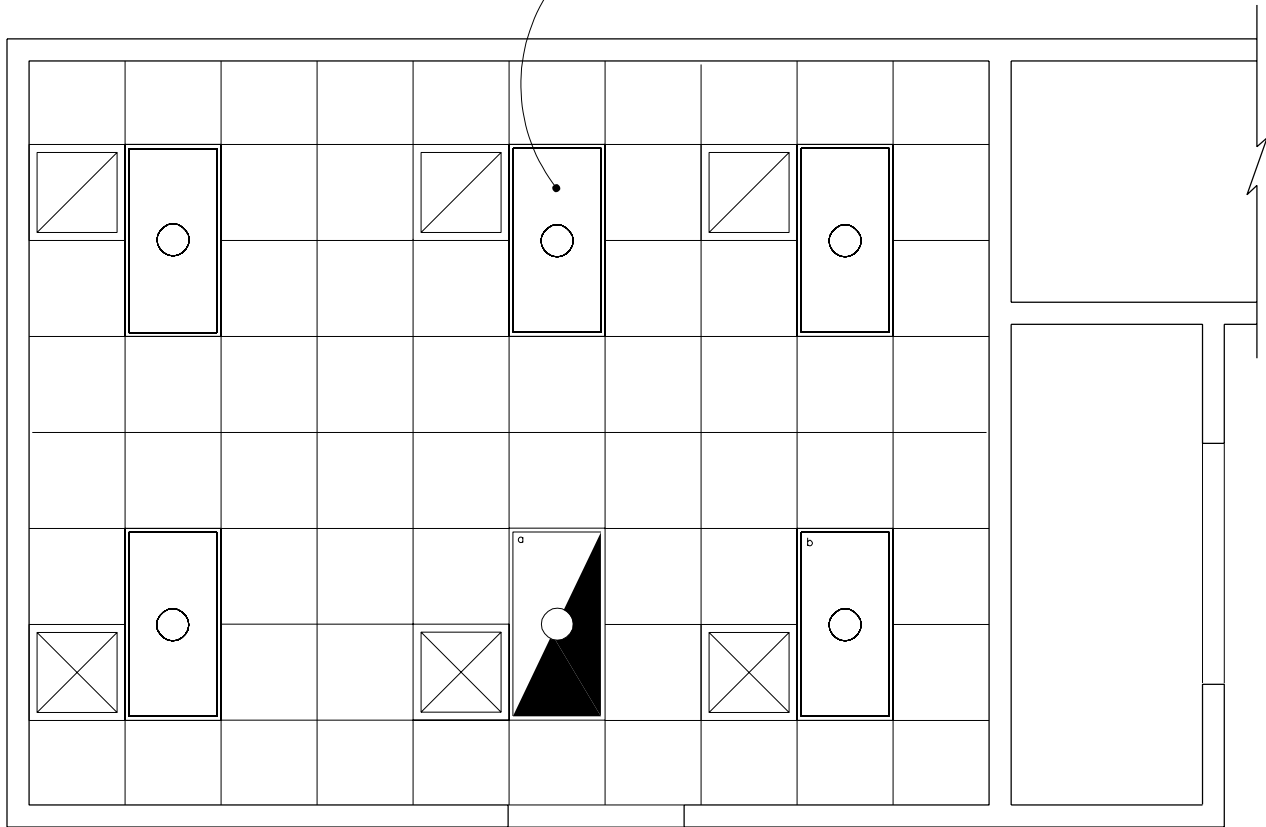
**29.0 NSM**  
**312 NSF**



# Ventilatory Test Room/Spirometry Reflected Ceiling Plan

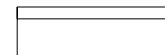
FINAL DRAFT 9-26-95  
REVISED FEBRUARY 1997

SEE: DESIGN STDS.  
LIGHTING-NOTE 2 (TYP.)



METERS

2 1



FEET

0 1 2 4



# Ventilatory Test Room/Spirometry

## Design Standards

### ARCHITECTURAL

Ceiling:	Acoustical Ceiling Tile
Ceiling Ht:	2700 mm (9'-0")
Wall Finish:	Vinyl wall covering
Wainscot:	---
Base:	Resilient Base
Floor Finish:	Vinyl composition tile
Slab Depr:	---
Notes:	1. 1120 mm (3'-8") wide door with tempered glass view window.

### SPECIAL EQUIPMENT

None

### ELECTRICAL

General:	30 FC - 75 FC levels in stations.
Notes:	1. Dual-level switching provides 50/100 FC levels in stations. 2. 600 mm x 1200 mm (2'x4') recessed fluorescent light fixtures, acrylic prismatic lens, W/4-F32T8 lamps, 3500°k, CRI=75 (minimum)

### POWER

General:	1400 W (receptacles)
Emergency:	500 W (crash cart receptacle)
Notes:	---

### COMMUNICATIONS

ADP:	ADP needs direct interface of all PET equipment with DHCP, a printer and workstation(s) separate for Spirometry, DLCO, and Diffusing Capacity analysis stations
Radio:	---
Telephone:	Yes
Intercom:	Yes
Public Addr:	---
Notes:	---

### HEATING, VENTILATING, AND AIR CONDITIONING

Dry Bulb Temp Cooling:	24 °C (76 °F)
Dry Bulb Temp Heating:	25 °C (78 °F)
Minimum % Outside Air:	15%
100% Exhaust Air:	Should be considered for medical centers with high tuberculosis cases
Noise Criteria:	NC 35
Steam:	---
Relative Humidity/Cooling:	50%
Relative Humidity/Heating:	30%
Minimum Air Changes/Hr.:	6
Room Pressure:	0
AC Load-Equipment:	75 W/sm (7 w/sf)
AC Load-Lighting:	26 W/sm (2.4 W/sf)
Number of People:	8
Note:	Provide 12 air changes per hour for Medical Centers with high TB cases.

# Ventilatory Test Room/Spirometry

## Design Standards

### HEATING, VENTILATING, AND AIR CONDITIONING (cont'd)

- Notes: 1. At least two (2) low level grilles should be considered especially for Medical Centers with high cases of tuberculosis.

### PLUMBING AND MEDICAL GAS

Cold Water:	Yes
Hot Water:	Yes
Laboratory Air:	---
Laboratory Vacuum:	---
Sanitary Drain:	Yes
Reagent Grade Water:	Yes
Medical Air:	Yes
Medical Vacuum:	Yes
Oxygen:	Yes

- Notes: 1. Central supply for medical gas should be considered.

# Ventilatory Test Rooms Spirometry

## Equipment Guide List

SYMBOL	QTY	AI	DESCRIPTION
--------	-----	----	-------------

### (A) VENIPUNCTURE STATION

AR	VV		CART, UTILITY, CORROSION RESISTING STEEL, 914 MM X 457 MM X 762 MM (36" X 18" X 30")
1	VV		CHAIR, BLOOD-DRAW
1	VV		CLOCK, BATTERY OPERATED
1	VV		RECEPTACLE, WASTE, 330 MM (13") DIAMETER
1	VV		SCALE, PATIENT

### (B) SPIROMETRY STATION

*NOTE: OUTLET, WALL, MEDICAL AIR, (PG-18-1, MCS 15311; H-18-3, CS 317-1)*

*NOTE: OUTLET, WALL, OXYGEN (PG-18-1, MCS 15491; H-18-3, CS 310-1)*

*NOTE: OUTLET, WALL, VACUUM (PG-18-1, MCS 15491; H-18-3, CS 310-1)*

*NOTE: THE ABOVE OUTLETS TO BE GROUPED TOGETHER.*

2	VV		CHAIR, STRAIGHT, WITH ARMS
1	VV		COMPUTER AND PRINTER
1	VV		MACHINE, SPIROMETRY WITH RECORDER AND MEDICAL GAS CYLINDERS

### (C) PLETHYSMOGRAPHY STATION

*NOTE: OUTLET, WALL, MEDICAL AIR, (PG-18-1, MCS 15311; H-18-3, CS 317-1)*

*NOTE: OUTLET, WALL, OXYGEN (PG-18-1, MCS 15491; H-18-3, CS 310-1)*

*NOTE: OUTLET, WALL, VACUUM (PG-18-1, MCS 15491; H-18-3, CS 310-1)*

*NOTE: THE ABOVE OUTLETS TO BE GROUPED TOGETHER.*

1	VV		CHAIR, STRAIGHT WITH ARMS
1	VV		PLETHYSMOGRAPH WITH SEPARATE MEDICAL GAS CYLINDERS

# Ventilatory Test Rooms Spirometry Equipment Guide List

SYMBOL	QTY	AI	DESCRIPTION
--------	-----	----	-------------

**(D) DIFFUSION STATION**

- NOTE: OUTLET, WALL, MEDICAL AIR, (PG-18-1, MCS 15311; H-18-3, CS 317-1)*
- NOTE: OUTLET, WALL, OXYGEN (PG-18-1, MCS 15491; H-18-3, CS 310-1)*
- NOTE: OUTLET, WALL, VACUUM (PG-18-1, MCS 15491; H-18-3, CS 310-1)*
- NOTE: THE ABOVE OUTLETS TO BE GROUPED TOGETHER.*

1	VV	CHAIR, STRAIGHT WITH ARMS
AR	VV	UNIT, DIFFUSION

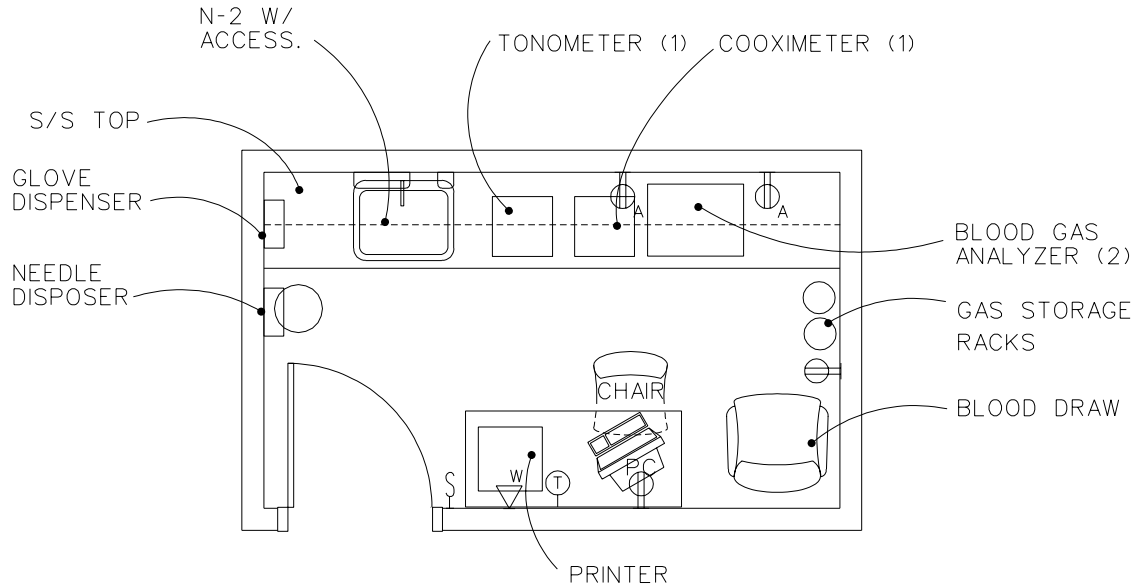
**(E) SUPPORT SPACE**

- NOTE: INTERCOM, STATION (PG-18-1, MCS 16760)*
- NOTE: CC OUTLET, INTERCOM (EMPTY CONDUIT SYSTEM) (PG-18-1, MCS 16111)*
- NOTE: ELECTRICAL RECEPTACLE FOR CRASH CART TO BE ON EMERGENCY POWER.*

	1	VV	BAROMETER, WALL, 1219 MM (48") HIGH
	1	VV	BLANKET, FIRE, ON THE WALL
	1	VV	CART, EMERGENCY, "CRASH CART" APPROX., 914 MM X 533 MM (36" X 21")
	1	VV	CHAIR, STRAIGHT, WITH ARMS
	AR	CC	COUNTER, WITH KNEE SPACE & SHELVING ABOVE
	1	VV	DISPENSER, BI-FOLD PAPER TOWEL, SURFACE MOUNTED
	1	VV	DISPENSER, SOAP, LIQUID, WALL MOUNTED
P-418	1	CC	LAVATORY, STRAIGHT BACK (PG -18-1, MCS 15450)
	1	VV	RECEPTACLE, WASTE, 330 MM (13") DIAMETER

# Blood Gas Analysis Room Equipment & Utility Plan

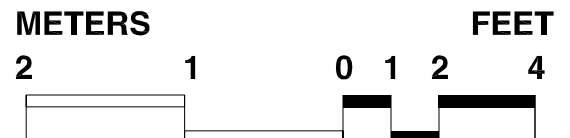
FINAL DRAFT 9-26-95  
REVISED FEBRUARY 1997



NOTES:

1. MORE THAN ONE OF THESE ROOMS MAY BE REQUIRED. CHECK PROGRAM SCOPE.
2. 50 NSF GAS CYLINDER STORAGE ROOM ADJACENT.

**7.90 NSM**  
**85 NSF**

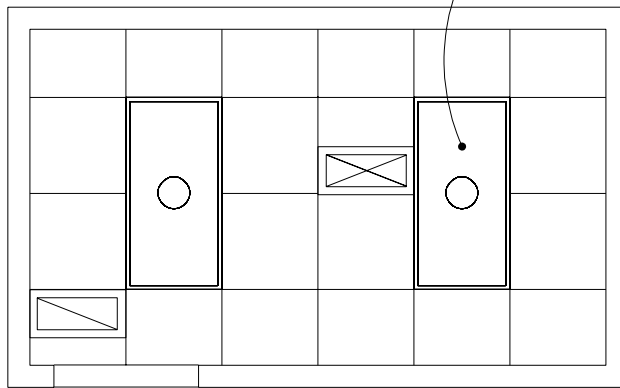




# Blood Gas Analysis Room Reflected Ceiling Plan

FINAL DRAFT 9-26-95  
REVISED FEBRUARY 1997

SEE: DESIGN STDS.  
LIGHTING-NOTE 1 (TYP.)



METERS

2 1

FEET

0 1 2 4



# Blood Gas Analysis Room

## Design Standards

### ARCHITECTURAL

Ceiling:	Acoustical ceiling tile
Ceiling Ht:	2700 mm (9'-0")
Wall Finish:	Paint
Wainscot:	---
Base:	Resilient Base
Floor Finish:	Vinyl composition tile
Slab Depr:	---
Notes:	1. 900 mm (3'-0") wide door with tempered glass view window.

### SPECIAL EQUIPMENT

None

### ELECTRICAL

General:	100 FC
Special:	---
Notes:	1. 600 mm x 1200 mm (2' x 4') recessed fluorescent light fixture, acrylic prismatic lens, W/3-F32T8 lamps, 3500°k, CRI=75 (min.)

### POWER

General:	1000 W (Receptacles)
Emergency:	---
Notes:	---

### COMMUNICATIONS

ADP: ADP needs direct interface of all ABG equipment with DHCP, a printer, and a personal computer.

Radio:	---
Telephone:	Yes
Intercom:	---
Public Addr:	---
Notes:	---

### HEATING, VENTILATING AND AIR CONDITIONING

Dry Bulb Temp Cooling:	22 °C(72 °F)
Dry Bulb Temp Heating:	22 °C (72 °F)
Minimum % Outside Air:	15%
100% Exhaust Air:	Yes
Noise Criteria:	NC-40
Steam:	---
Relative Humidity/Cooling:	50%
Relative Humidity/Heating:	30%
Minimum Air Changes/Hr.:	6
Room Pressure:	Negative
AC Load-Equipment:	129 W/sm (12 W/sf)
AC Load-Lighting:	27 W/sm (2.5 W/sf)
Number of People:	4
Special Exhaust:	---
Notes:	---

### PLUMBING AND MEDICAL GAS

Cold Water:	Yes
Hot Water:	Yes
Laboratory Air:	---
Laboratory Vacuum:	---
Sanitary Drain:	Yes
Reagent Grade Water:	---
Medical Air:	---
Medical Vacuum:	---
Oxygen:	---
Notes:	1. Waste and vent piping material needs to be chemical resistant type.

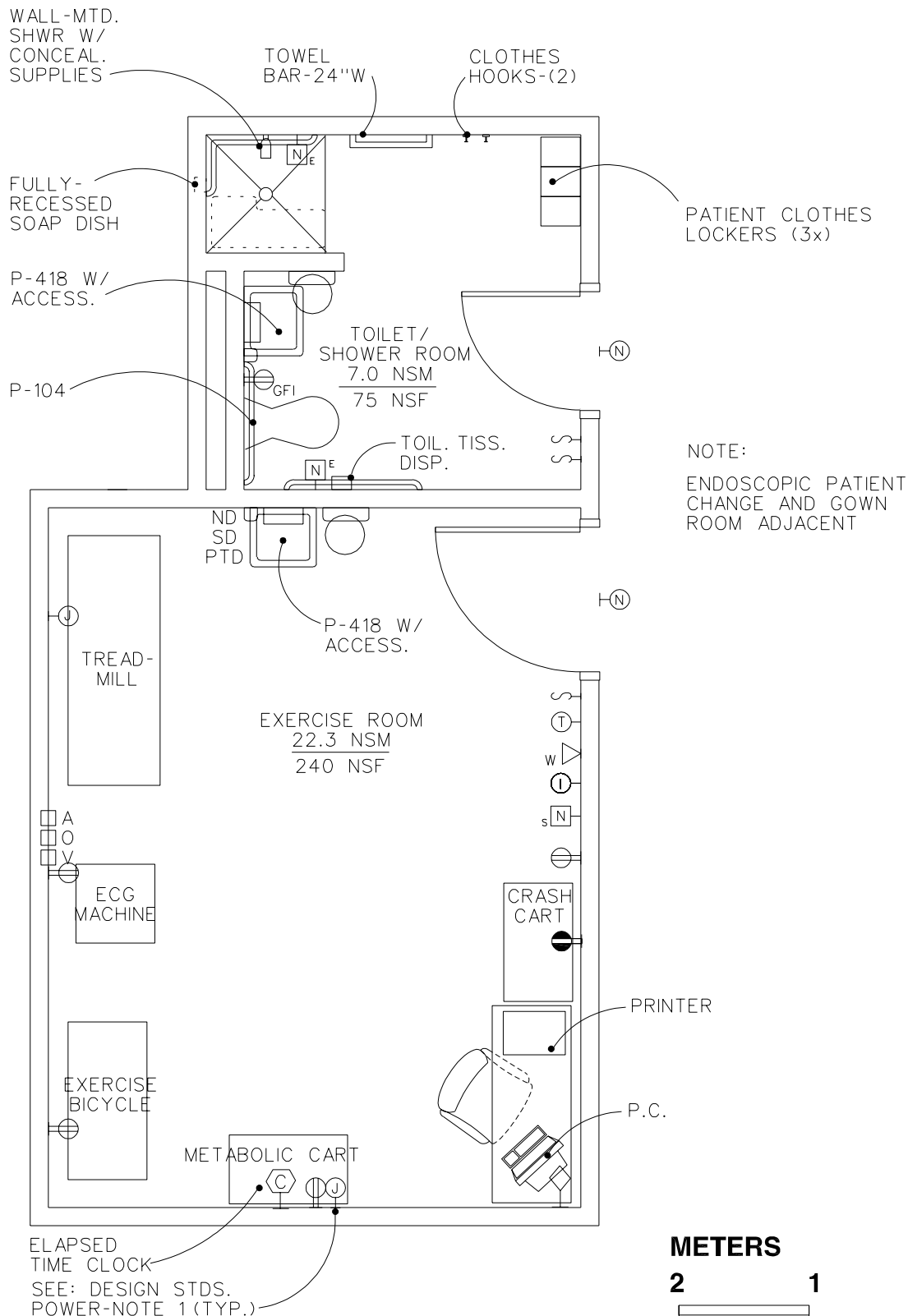
# Blood Gas Analysis Room

## Equipment Guide List

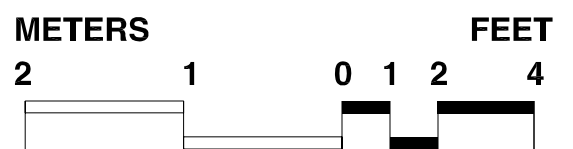
SYMBOL	QTY	AI	DESCRIPTION
	2	VV	ANALYZER, BLOOD GAS
	1	VV	CHAIR, STRAIGHT, WITH ARMS
	1	VV	CHAIR, STRAIGHT
	1	VV	CLOCK, BATTERY OPERATED
	1	VV	COOXIMETER
	1	VV	DISPENSER, PAPER TOWEL, SURFACE MOUNTED
	1	VV	DISPENSER, GLOVE, SURFACE MOUNTED
	1	VV	DISPENSER, SOAP, LIQUID, WALL MOUNTED
	1	VV	DISPOSAL, NEEDLE
	AR	CF	MODULAR CASEWORK
	1	VV	PERSONAL COMPUTER AND PRINTER
	AR	VV	RECEPTACLE, WASTE, 330 MM (13") DIAMETER
N-2	1	CF	SINK, CORROSION RESISTING STEEL, WITH END OR CORNER DRAIN OUTLET, 559 MM X 406 MM X 279 MM (22" X 16" X 11") (PG-18-1 & PG-18-6, MCS 11602)
	1	VV	TONOMETER

# Exercise Room With Patient and Toilet Shower Equipment & Utility Plan

FINAL DRAFT 9-26-95  
REVISED FEBRUARY 1997



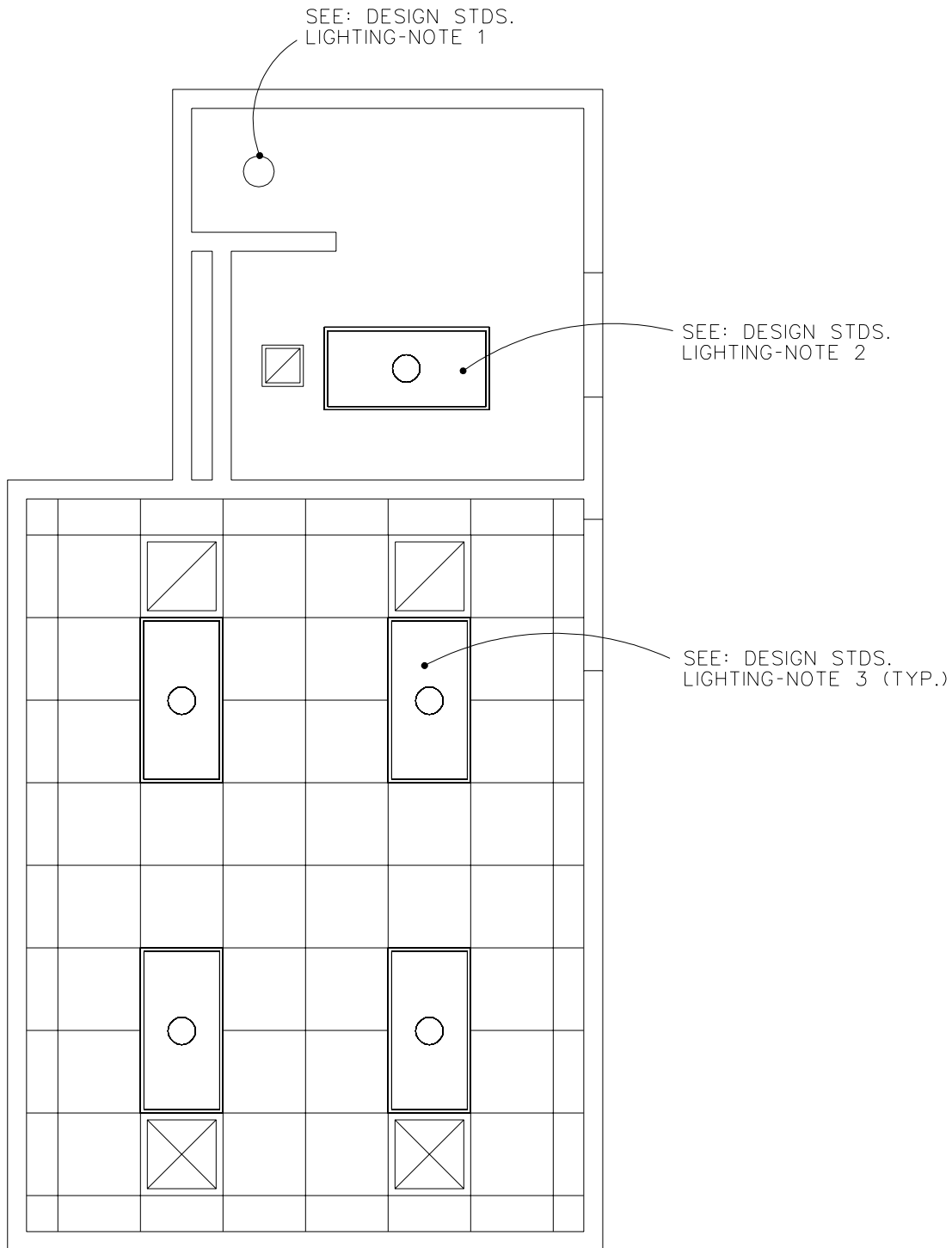
**29.3 NSM**  
**315 NSF**



# Exercise Room With Patient Toilet and Shower

## Reflected Ceiling Plan

FINAL DRAFT 9-26-95  
REVISED FEBRUARY 1997



METERS

2 1



FEET

0 1 2 4



# Exercise Room w/Patient Toilet & Shower

## Design Standards

### ARCHITECTURAL

Ceiling:	Acoustical ceiling tile
Ceiling Ht:	2700 mm (9'-0")
Wall Finish:	Paint
Wainscot:	---
Base:	---
Floor Finish:	Vinyl composition tile
Slab Depr:	75 mm (3") @ shower
Notes:	1. 1120 mm (3'-8" )wide door with tempered glass view window in exercise room.

### SPECIAL EQUIPMENT

None

### ELECTRICAL

General:	30 FC
Notes:	<ol style="list-style-type: none"> <li>1. Recessed lensed incandescent shower light with 150W A-21 lamp, U.L. listed for wet locations.</li> <li>2. 600 mm x 1200 mm (2' x 4') recessed fluorescent light fixture, acrylic prismatic lens, W/2-F32T8 lamps, 3500°k, CRI=75 (min)U.L. listed for wet locations.</li> <li>3. 600 mm x 1200 mm (2'x 4') recessed fluorescent light fixture, acrylic prismatic lens, W/2-F32T8 lamps, 3500 deg. K, CRI=75 (min.)</li> </ol>

### POWER

General:	1200W (Receptacles)
Emergency:	500W (crash craft receptacle)
Notes:	<ol style="list-style-type: none"> <li>1. Junction boxes for elapsed time clock and controls as required.</li> <li>2. 220 VACv usually required for treadmills.</li> </ol>

### COMMUNICATIONS

ADP:	needs direct interface of all AGB equipment with DHCP, a printer, and a workstation
Radio:	---
Telephone:	Yes
Intercom:	Yes
Public Addr:	---
Notes:	---

### HEATING, VENTILATING AND AIR CONDITIONING

Dry Bulb Temp Cooling:	24 °C (76° F)
Dry Bulb Temp Heating:	25 °C (78° F)
Minimum % Outside Air:	15%
100% Exhaust Air:	Yes
Noise Criteria:	NC 40
Steam:	---
Relative Humidity/Cooling:	50%
Relative Humidity/Heating:	30%
Minimum Air Changes/Hr	10 (See Notes)
Room Pressure:	Negative
AC Load-Equipment:	32 W/sm (3 W/sf) (Exercise Room)

# Exercise Room w/Patient Toilet & Shower

## Design Standards

### HEATING, VENTILATING, AND AIR CONDITIONING (cont'd)

AC Load-Lighting: toilet:27 W/sm (2.5W/sf)  
 exercise: 13W/sm (1.2W/sf)

Number of People: 6 for exercise;1 for toilet

Special Exhaust: ---

- Notes:
- 1.Heat gain from occupant shall be higher than normal in exercise room.
  - 2.Minimum 10 Air Changes per hour of supply air in exercise room and minimum of 10 air changes per hour of exhaust air in shower/ toilet room.

### PLUMBING AND MEDICAL GAS

Cold Water:	Yes
Hot Water:	Yes
Laboratory Air:	---
Laboratory Vacuum:	---
Sanitary Drain:	Yes
Reagent Grade Water:	---
Medical Air:	Yes
Medical Vacuum:	Yes
Oxygen:	Yes
Notes:	---

### Toilet and Shower

#### ARCHITECTURAL

Ceiling:	Plaster
Ceiling Ht:	(2700 mm) 9'-0"
Wall Finish:	Ceramic Tile
Wainscot:	---
Base:	Ceramic Tile
Floor Finish:	Ceramic Tile
Slab Depr:	75 mm (3") @ shower
Notes:	

# Exercise Room with Patient Toilet and Shower Equipment Guide List

SYMBOL	QTY	AI	DESCRIPTION
--------	-----	----	-------------

## (A) Exercise Room

*NOTE: INTERCOM, STATION (PG-18-1, MCS 16760)*

*NOTE: OUTLET, INTERCOM (EMPTY CONDUIT SYSTEM) (PG-18-1, MCS 16111)*

*NOTE: OUTLET, WALL, MEDICAL AIR (PG-18-1, MCS 15491; H-18-3, CS 310-1)*

*NOTE: OUTLET, WALL, OXYGEN (PG-18-1, MCS 15491; H-18-3, CS 310-1)*

*NOTE: OUTLET, WALL, VACUUM (PG-18-1, MCS 15491; H-18-3, CS 310-1)*

*NOTE: ELECTRICAL RECEPTACLE FOR CRASH CART TO BE ON EMERGENCY POWER.*

	1	VV	CART, EMERGENCY, "CRASH CART" APPROX., 914 MM X 533 MM (36" X 21")
	1	VV	CHAIR, STRAIGHT
	1	CC	CLOCK, ELECTRIC TIME ELAPSED, RECESSED (PG-18-1, MCS 10360)
	1	VV	CRT AND PRINTER
	1	VV	DESK 1520 MM X 610 MM (60" X 24") DESK
	1	VV	DISPENSER, BI-FOLD PAPER TOWEL, SURFACE MOUNTED
	1	VV	DISPENSER, SOAP, LIQUID, WALL MOUNTED
	1	VV	EXERCISER, BICYCLE
P-414	1	CC	LAVATORY, STRAIGHT BACK (PG -18-1, MCS 15450)
	1	VV	MACHINE, TREADMILL, WITH CONTROLS, 120 VOLT, 20 AMP, APPROX., 1829 MM X 762 MM (72" X 30")
	1	VV	MACHINE, TWELVE (12) LEADS "ECG"
	1	VV	METABOLIC CART
	1	VV	RECEPTACLE, WASTE, 330 MM (13") DIAMETER



# Exercise Room with Patient Toilet and Shower Equipment Guide List

SYMBOL	QTY	AI	DESCRIPTDN
--------	-----	----	------------

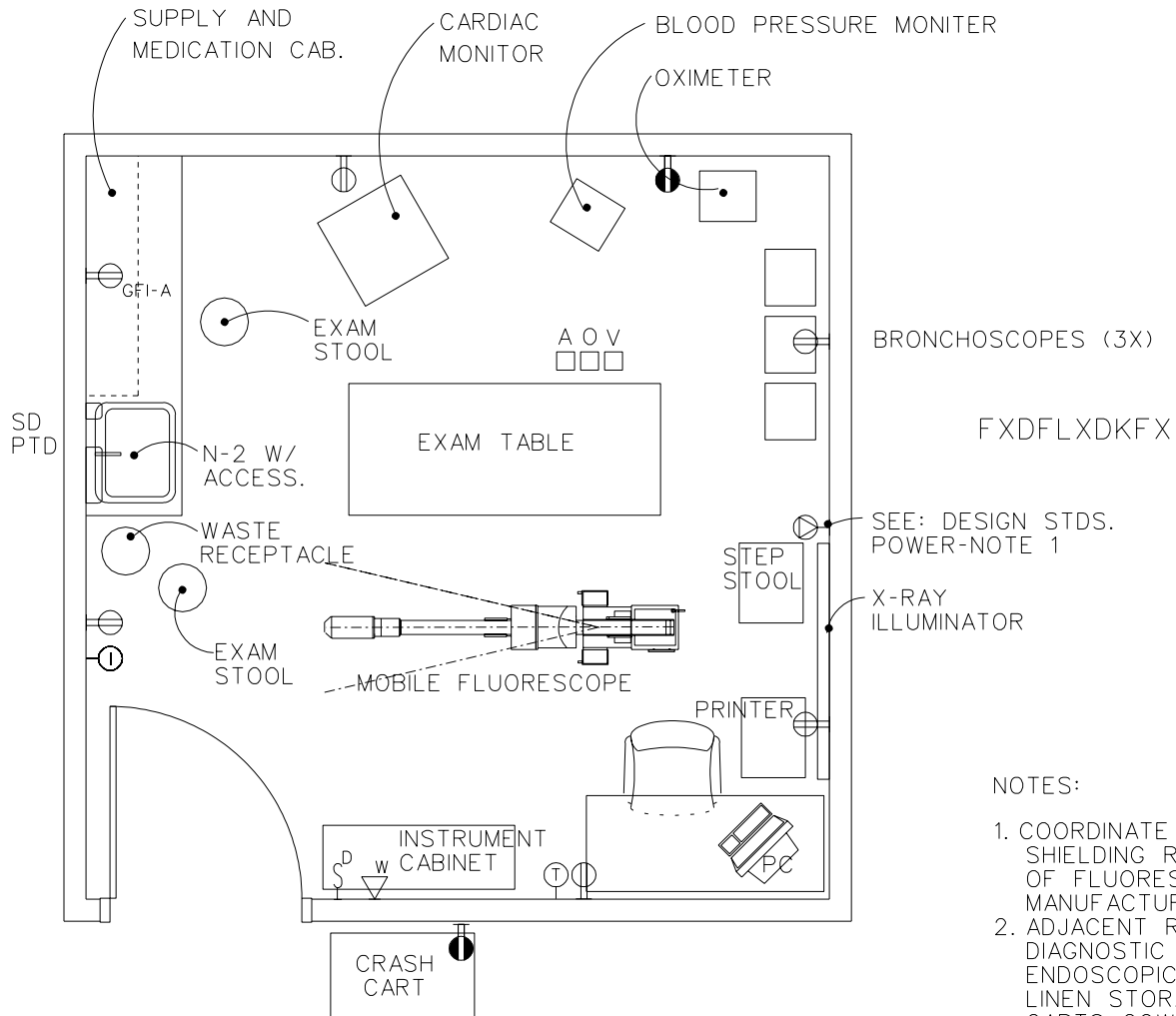
## (B) Patient Toilet and Shower

*NOTE: NURSE CALL, EMERGENCY STATION WITH CORRIDOR SIGNAL LIGHT CONNECTED TO NEAREST NURSE CONTROL STATION (PG-18-1, MCS 16761)*

*NOTE: THE ABOVE NURSE CALL-EMERGENCY STATION IS IN ADDITION TO THE BATH EMERGENCY SYSTEM.*

	AR	CC	BAR, GRAB FOR SHOWER (PG -18-1, MCS 10800; PG-18-4, SD 13.1)
	AR	CC	BAR, GRAB FOR WATER CLOSET PG -18-1, MCS 10800; PG-18-4, SD 12,14G)
	1	CC	BAR, TOWEL (PG-18-1, MCS 10800)
	1	VV	CURTAIN, SHOWER
	1	CC	DISH, SOAP, RECESSED (PG-18-1, MCS 10800)
	1	CC	DISPENSER, TOILET TISSUE, DOUBLE ROLL (PG-18-1, MCS 10800; PG-18-4, SD 12)
	1	VV	DISPENSER, BI-FOLD PAPER TOWEL, SURFACE MOUNTED
	1	VV	DISPENSER, SOAP, LIQUID, WALL MOUNTED
	AR	CC	HOOK, CLOTHES (PG-18-1, MCS 10800)
P-418	1	CC	LAVATORY, STRAIGHT BACK (PG -18-1, MCS 15450)
	1	CC	LIGHT, OVER LAVATORY (H-08-1, MCS 16510; H-08-4, SD 919)
	2	CC	LOCKER, PATIENT, FULL HEIGHT
	1	CC	MIRROR, WHEELCHAIR, 610 MM X 914 MM (24" X 36") (PG-18-1, MCS 10800; PG-18-4, SD 15)
	1	CC	ROD, FOR SHOWER CURTAIN (PG-18-1, MCS 10800; PG-18-4, SD 14)
	1	CC	SHELF, STAINLESS STEEL, WALL HUNG, 152 MM X 457 MM (6" X 18") (PG -18-1, MCS 10360; PG-18-4, SD 15)
P-701	1	CC	SHOWER, BATH FIXTURE, DETACHABLE, WALL MOUNTED, CONCEALED SUPPLIES (PG -18-1, MCS 15450; PG-18-4, SD 13 & 382)
	1	CC	STALL, SHOWER, 1219 MM X 1187 MM (48" X 46 -3/4") (PG-18-1, MCS 10170; PG-18-4, SD 13)
P-104	1	CC	WATER CLOSET, WALL HUNG, WITH BED PAN WASHER (PG-18-1, MCS 15450; PG-18-4, SD 389)

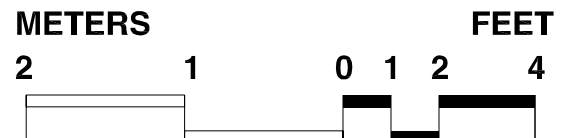
# Special Procedures/Bronchoscopy Rm Equipment & Utility Plan



NOTES:

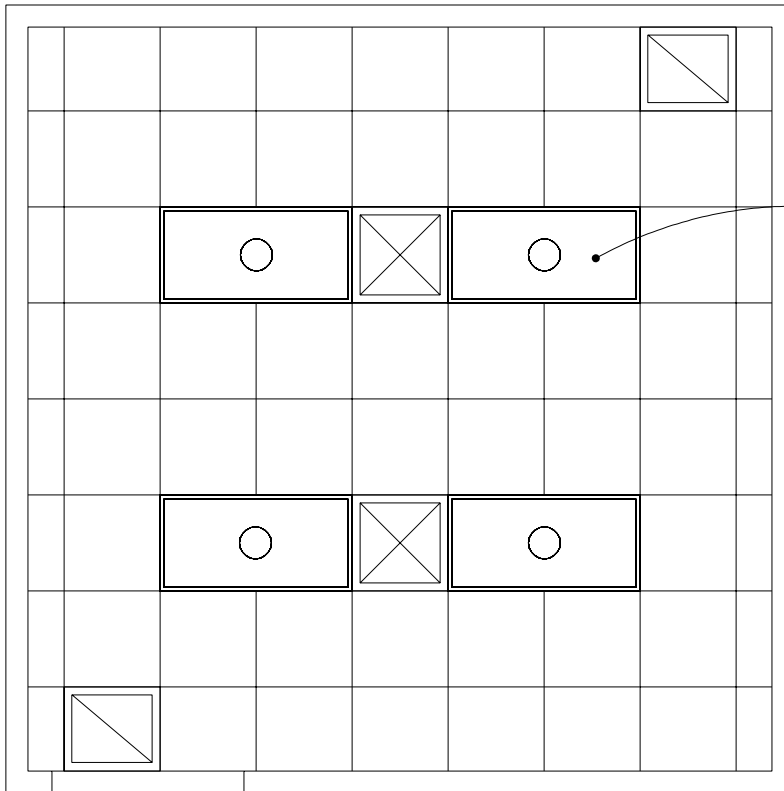
1. COORDINATE SHIELDING SHIELDING REQUIREMENTS OF FLUORESCOPE WITH MANUFACTURER
2. ADJACENT ROOMS INCLUDE: DIAGNOSTIC ROOM, ENDOSCOPIC CLEANING, LINEN STORAGE, CARTS, GOWNING AND RECOVERY ROOMS

**22.3 NSM**  
**240 NSF**



# Special Procedures/Bronchoscopy Rm Reflected Ceiling Plan

FINAL DRAFT 9-26-95  
REVISED FEBRUARY 1997



SEE: DESIGN STDS.  
LIGHTING-NOTE 1 (TYP.)

METERS

2 1



FEET

0 1 2 4



# Special Procedures/Bronchoscopy Room

## Design Standards

### ARCHITECTURAL

Ceiling:	Acoustical ceiling tile
Ceiling Ht:	2890 mm (9'-6")
Wall Finish:	Vinyl wall covering
Wainscot:	---
Base:	Resilient Base
Floor Finish:	Vinyl composition tile
Slab Depr:	---
Notes:	1. 1200 mm (4'-0") wide door with 200 mm x 250 mm (8" x 10") tempered glass view window.

### SPECIAL EQUIPMENT

None

### ELECTRICAL

General:	70 FC
Notes:	1. 600 mm x 1200 mm (2' x 4') recessed fluorescent light fixtures, acrylic prismatic lens, W/3-F32T8 lamps, 3500°k, CRI=75 (minimum)
	2. Illumination level controlled by dimmer.

### POWER

General:	1200 W (Receptacles)
Emergency:	500 W (Receptacles)
Notes:	1. Special receptacle for mobile fluoroscopy unit. (Coordinate with system supplier).
	2. Receptacle for crash cart to be on emergency power.

### COMMUNICATIONS

ADP:	Yes
Radio:	---
Telephone:	Yes
Intercom:	Yes
Public Addr:	---
Notes:	1. Junction box for CCTV camera with conduit to adjacent diagnostic room. 2. Junction box for poly somnograph cabling with conduit diagnostic room. 3. Nurse call system.

### HEATING, VENTILATING AND AIR CONDITIONING

Dry Bulb Temp Cooling:	24 ° C (76 ° F)
Dry Bulb Temp Heating:	25 ° C (78 ° F)
Minimum % Outside Air:	---
100% Exhaust Air:	Yes
Noise Criteria:	NC-40
Steam:	---
Relative Humidity/Cooling:	50%
Relative Humidity/Heating:	30%
Minimum Air Changes/Hr.:	8
Room Pressure:	Negative
AC Load-Equipment:	86 W/sm (8 W/sf)
AC Load-Lighting:	22 W/sm (2 W/sf)
Number of People:	3
Special Exhaust:	---

# Special Procedures/Bronchoscopy Room

## Design Standards

### HEATING, VENTILATING, AND AIR CONDITIONING (cont'd)

- Notes:
1. Room exhaust shall be accomplished via low level outlets.
  2. Provide a special hood and exhaust for instrument cleaning fumes if instrument cleaning is done here rather than in separate room.
  3. If Bronchoscopy room is used for tuberculosis patient exams min. air changes per hr. increases to 12 and provide filtration as per TB Criteria in HVAC Design Manual for Hospital Projects.

### PLUMBING AND MEDICAL GAS

Cold Water:	Yes
Hot Water:	Yes
Laboratory Air:	---
Laboratory Vacuum:	---
Sanitary Drain:	Yes
Reagent Grade Water:	---
Medical Air:	Yes
Medical Vacuum:	Yes
Oxygen:	Yes
Notes:	---

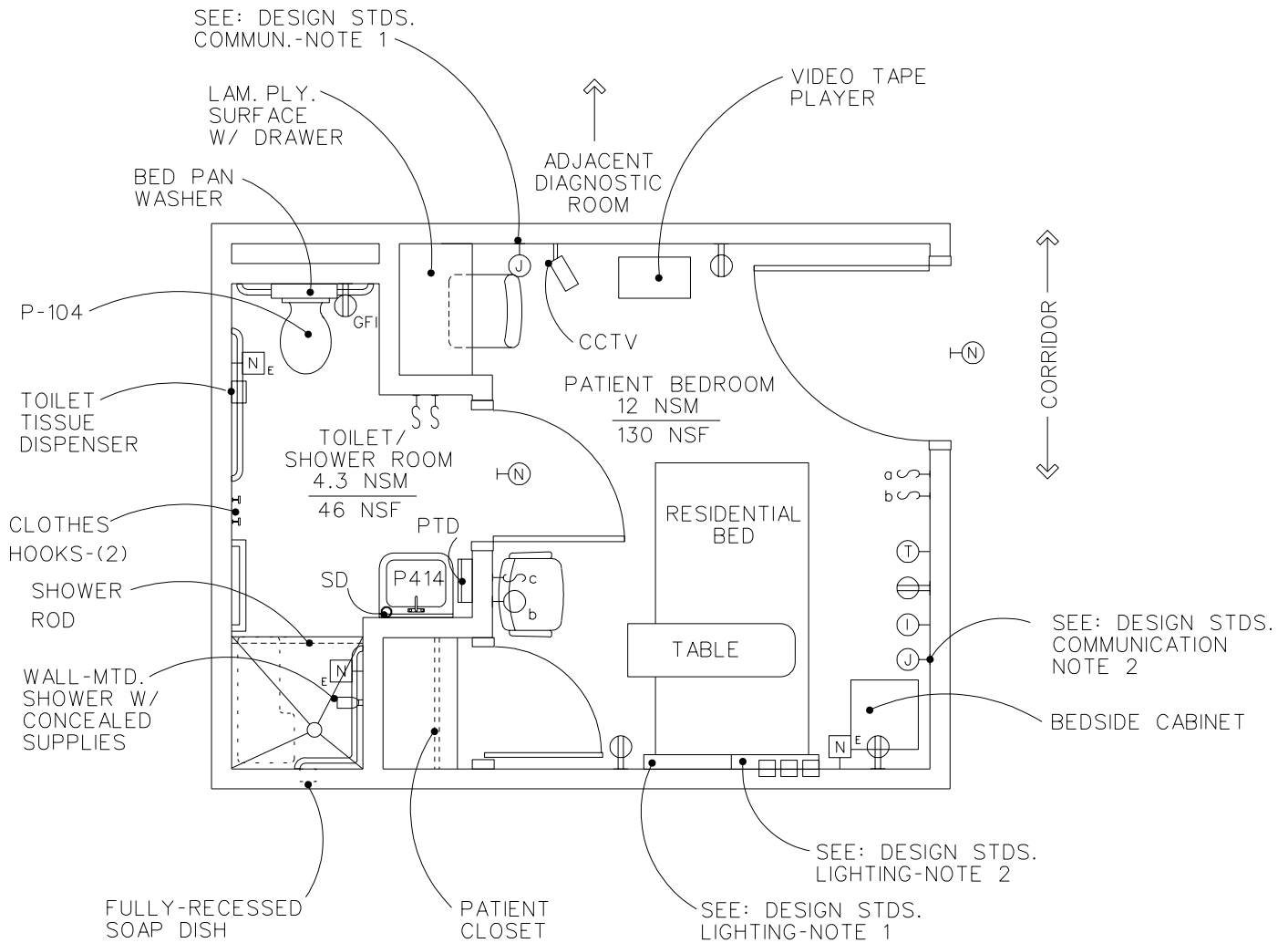
# Special Procedures /Bronchoscopy Room

## Equipment Guide List

SYMBOL	QTY	AI	DESCRIPTION
			<i>NOTE: BRACKET, VACUUM BOTTLE SLIDE (PG-18-1, MCS 15491; PG-18-4, SD 336)</i>
			<i>NOTE: INTERCOM, STATION (PG-18-1, MCS 16760)</i>
			<i>NOTE: OUTLET, INTERCOM (EMPTY CONDUIT SYSTEM) (PG-18-1, MCS 16111)</i>
			<i>NOTE: OUTLET, WALL, MEDICAL AIR (PG-18-1, MCS 15491; H-18-3, CS 310-1)</i>
			<i>NOTE: OUTLET, WALL, OXYGEN (PG-18-1, MCS 15491; H-18-3, CS 310-1)</i>
			<i>NOTE: OUTLET, WALL, VACUUM (PG-18-1, MCS 15491; H-18-3, CS 310-1)</i>
			<i>NOTE: ELECTRICAL RECEPTACLE FOR CRASH CART TO BE ON EMERGENCY POWER.</i>
	1	VV	BLOOD PRESSURE MONITOR
	3	VV	BRONCHOSCOPES
	1	VV	CABINET, INSTRUMENTS, 1 219 MM X 406 MM X 1829 MM, (48" X 16" X 72") WITH GLAZED DOORS, SLOPING TOP
	1	VV	CART, EMERGENCY, "CRASH CART" APPROX., 914 MM X 533 MM (36" X 21")
	1	VV	CART, VIDEO, ENDOSCOPIC
	1	VV	DISPENSER, PAPER TOWEL, SURFACE MOUNTED
	1	VV	DISPENSER, SOAP, LIQUID, WALL MOUNTED
	AR	VV	ILLUMINATORS, FILM, X-RAY, 120 VOLT, 20 AMP, WALL MOUNTED (1 BANK OF 4)
	1	VV	LIGHT SOURCE, FIBER-OPTIC, ENDOSCOPIC W/ CART
	AR	CF	MODULAR CASEWORK
	1	VV	MONITOR, CARDIAC - ON CART (FLOOR UNIT)
	1	VV	MONITOR, EAR OXIMETER
	1	VV	RECEPTACLE, WASTE, 330 MM (13")
N-2	1	CF	SINK, CORROSION RESISTING STEEL, WITH END OR CORNER DRAIN OUTLET, 559 MM X 406 MM X 279 MM (22" X 16" X 11") (PG-18-1 & PG-18-6, MCS 11602)
	2	VV	STOOL, STEP, APPROX., 508 MM X 406 MM (20" X 16")
	1	VV	TABLE, EXAMINATION-PATIENT, X-RAY, TRANSLUCENT TOP
	1	VV	X-RAY/FLUOROSCOPE (MOBILE UNIT & MONITOR)

# Sleep Study Suite With Patient Toilet and Shower Equipment & Utility Plan

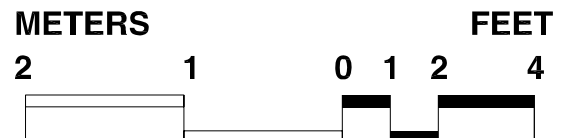
FINAL DRAFT 9-26-95  
REVISED FEBRUARY 1997



NOTES:

1. Acoustically seal all thru-wall conduits.
2. Sleep study suites are usually grouped in 2 or 4 bedroom clusters. If a shared bathroom is used for 2 bedrooms, the bathroom can be increased to 6 NSM (65 NSF).

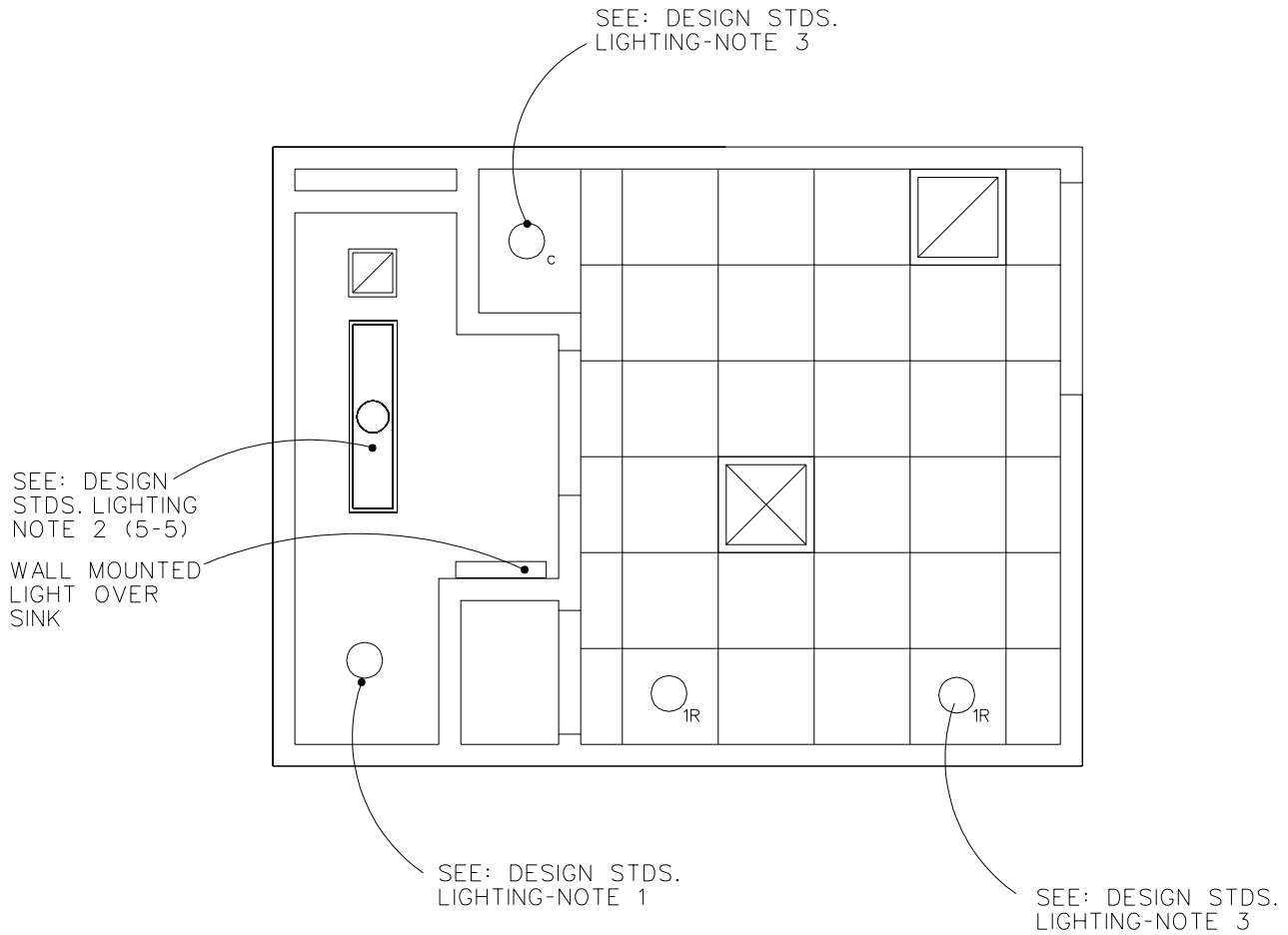
**185 NSF**  
**17.2 NSM**



# Sleep Study Suite With Patient Toilet and Shower

## Reflected Ceiling Plan

FINAL DRAFT 9-26-95  
REVISED FEBRUARY 1997



METERS

2 1



FEET

0 1 2 4





# Sleep Study Suite

## Design Standards

### Bedroom

#### ARCHITECTURAL

Ceiling:	Acoustical ceiling tile
Ceiling Ht:	2700 mm ( 9'-0")
Wall Finish:	Paint/ceramic tile
Wainscot:	---
Base:	Resilient base
Floor Finish:	Vinyl composition tile
Slab Depr:	Slope bathroom floor
Notes:	---

#### SPECIAL EQUIPMENT

None

#### ELECTRICAL

General:	30 FC
Notes:	<ol style="list-style-type: none"> <li>1. Wall mounted fluorescent bed light. VA STD. detail E-F-18.</li> <li>2. Wall mounted night light fixture mounted 450 mm (18") AFF.</li> <li>3. Provide electric for infra-red lights.</li> <li>4. Provide Faraday type shielding for bedrooms and diagnostic rooms.</li> </ol>

#### POWER

General:	1000 W (Receptacles)
Emergency:	---
Notes:	<ol style="list-style-type: none"> <li>1. All power to bedrooms will be controlled from Diagnostic Rooms.</li> </ol>

#### COMMUNICATIONS

ADP:	---
Radio:	---
Telephone:	Yes
Intercom:	Microphone and outlets
Public Addr:	---
Notes:	1. Provide closed circuit TV cameras and receivers.

#### HEATING, VENTILATING AND AIR CONDITIONING

Dry Bulb Temp Cooling:	24 ° C (76 ° F)
Dry Bulb Temp Heating:	25 ° C (78 ° F)
Minimum % Outside Air:	15%
100% Exhaust Air:	---
Noise Criteria:	NC-35
Steam:	---
Relative Humidity/Cooling:	50%
Relative Humidity/Heating:	30%
Minimum Air Changes/Hr:	4
Room Pressure:	0
AC Load Equipment:	29 W/sm (2.7 W/sf)
AC Loading Lighting:	11 W/sm (1.0 W/sf)
Number of People:	3
Special Exhaust:	---
Notes:	<ol style="list-style-type: none"> <li>1. See HVAC Design Manual for Hospital Projects for air balance requirements between bedroom and the toilet /shower</li> </ol>

# Sleep Study Suite

## Design Standards

### PLUMBING AND MEDICAL GAS

Cold Water:	---
Hot Water:	---
Laboratory Air:	---
Laboratory Vacuum:	---
Sanitary Drain:	---
Reagent Grade Water:	---
Medical Air:	---
Medical Vacuum:	Yes
Oxygen:	Yes
Notes:	Yes

### Toilet and Shower

#### ARCHITECTURAL

Ceiling:	Plaster
Ceiling Ht:	(2700 mm) 9'-0"
Wall Finish:	Ceramic tile
Wainscot:	---
Base:	Ceramic tile
Floor Finish:	Ceramic tile
Slab Depr:	75 mm (3") @ shower
Notes:	---

#### SPECIAL EQUIPMENT

None

### ELECTRICAL

General:	30 FC
shower:	11 W/m <sup>2</sup> (1.0 W/sf)
toilet:	20 W/m <sup>2</sup> (1.8 W/sf)
Notes:	<ol style="list-style-type: none"> <li>1. Recessed lens incandescent shower light with 150 W A-21 lamp, U.L. listed for wet locations.</li> <li>2. 300 mm x 1200 mm (1' x 4') recessed fluorescent light fixtures, acrylic prismatic lens, W/2-F32T8 lamps, 4100 deg. k, CRI=85 (min.), U.L. listed for wet locations.</li> </ol>

### POWER

General:	1000 W (Receptacles)
Emergency:	---
Notes:	1. All power to bedrooms will be controlled from Diagnostic Rooms.

### COMMUNICATIONS

ADP:	---
Radio:	---
Telephone:	---
Intercom:	Yes
Public Addr:	---
Notes:	---

### PLUMBING AND MEDICAL GAS

Cold Water:	Yes
Hot Water:	Yes
Laboratory Air:	---
Laboratory Vacuum:	---
Sanitary Drain:	Yes
Reagent Grade Water	---
Medical Air:	---
Medical Vacuum:	---
Oxygen:	---
Notes:	---

# Sleep Study Suite Equipment Guide List

SYMBOL	QTY	AI	DESCRIPTION
--------	-----	----	-------------

## (A) Patient Bedroom

*NOTE: OUTLET, WALL, MEDICAL AIR (PG-18-1, MCS 15491; H-18-3, CS 310-1)*

*NOTE: OUTLET, WALL, OXYGEN (PG-18-1, MCS 15491; H-18-3, CS 310-1)*

*NOTE: OUTLET, WALL, VACUUM (PG-18-1, MCS 15491; H-18-3, CS 310-1)*

	1	VV	BED, RESIDENTIAL DOUBLE BED
	1	VV	CABINET, BEDSIDE, 470 MM X 464 MM X 876 MM (18-1/2" X 19" X 34-1/2")
	1	VV	CAMERA, CCTV SYSTEM, WALL MTD.
	1	VV	CHAIR, STRAIGHT, WITH ARMS
	1	VV	CHAIR, STRAIGHT
P-413	1	CC	LAMINATED PLASTIC SHELF WITH DRAWER 610 MM X 914 MM (24" X 36")
	1	VV	TABLE, OVER-BED, ADJUSTABLE HEIGHT, 838 MM X 356 MM (33" X 14") ON CASTERS
	1	VV	VIDEO TAPE PLAYER

## (B) Patient Toilet/Shower

*NOTE: NURSE CALL, EMERGENCY STATION WITH CORRIDOR SIGNAL LIGHT  
 CONNECTED TO NEAREST NURSE CONTROL STATION (PG-18-1, MCS 16761)*

*NOTE: PROVIDE INTERCOM BETWEEN SUITE AND DIAGNOSTIC ROOM*

*NOTE: THE ABOVE NURSE CALL-EMERGENCY STATION IS IN ADDITION TO THE  
 BATH EMERGENCY SYSTEM.*

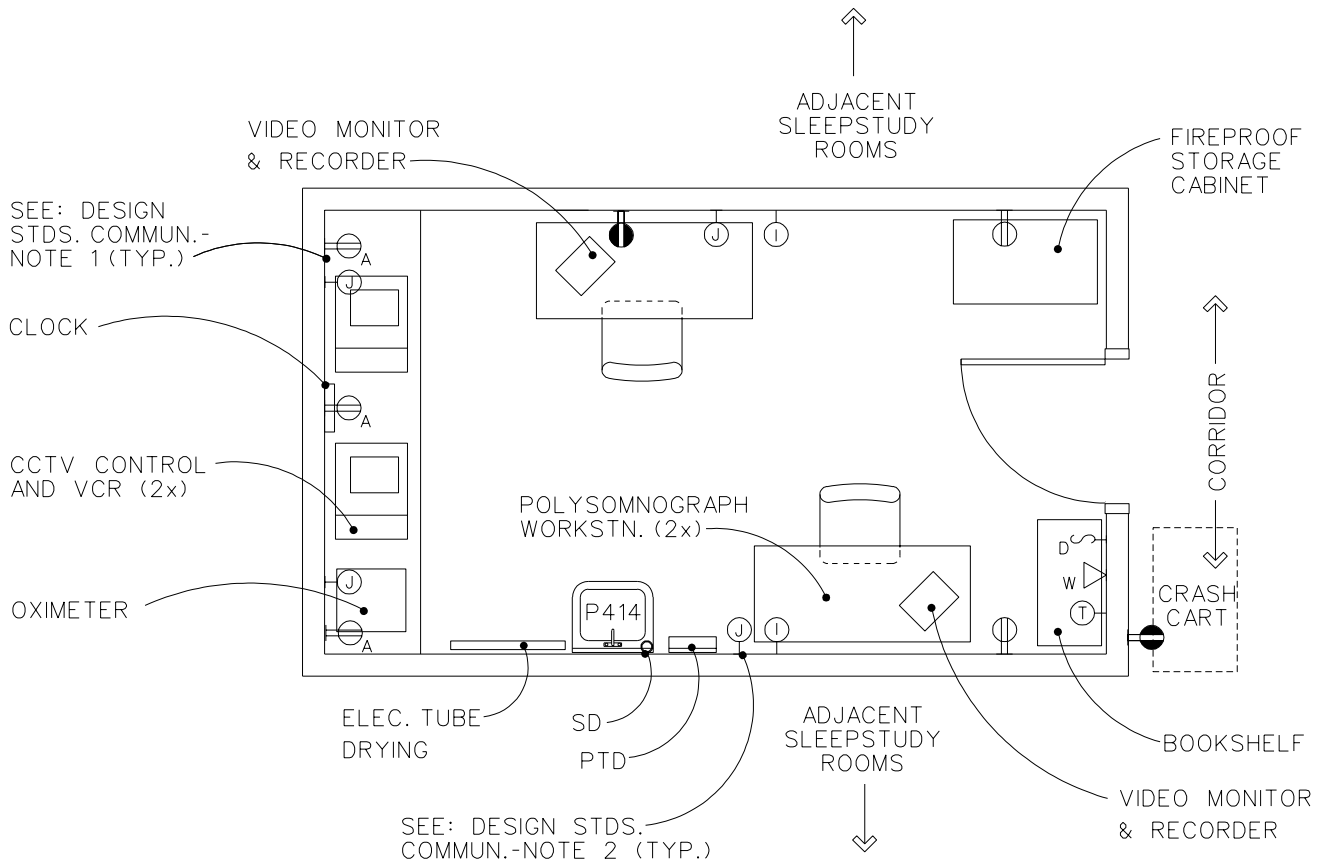
	AR	CC	BAR, GRAB SHOWER (PG-18-1, MCS 10800; PG-18-4, SD 13,13.1)
	AR	CC	BAR, GRAB FOR WATER CLOSET (PG-18-1, MCS 10800; PG-18-4, SD 12, 146)
	1	CC	BAR, TOWEL (PG-18-1, MCS 10800)
	1	VV	CURTAIN, SHOWER
	1	CC	DISH, SOAP, RECESSED (PG-18-1, MCS 10800)
	1	VV	DISPENSER, BI-FOLD PAPER TOWEL, SURFACE MOUNTED
	1	VV	DISPENSER, SOAP, LIQUID, WALL MOUNTED

# Sleep Study Suite Equipment Guide List

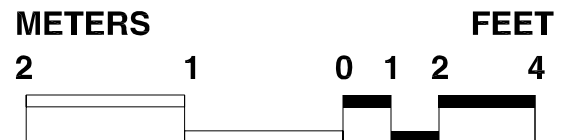
SYMBOL	QTY	AI	DESCRIPTION
<b>(B) Patient Toilet/Shower(cont'd)</b>			
P-414	1	CC	DISPENSER, TOILET TISSUE, DOUBLE ROLL (PG -18-1, MCS 10800; PG-18-4, SD 12)
	2	CC	HOOK, CLOTHES (PG-18-1, MCS 10800)
	1	CC	LAVATORY, STRAIGHT BACK (PG-18-1, MCS 15450)
	1	CC	LIGHT, OVER LAVATORY (PG-18-1, MCS 16510; PG-18-4, SD 919)
	1	CC	MIRROR, WHEELCHAIR, 610 MM X 914 MM (24" X 36") (PG-18-1, MCS 10800; PG-18-4, SD 15)
	1	CC	ROD, FOR SHOWER CURTAIN (PG -18-1, MCS 10800; PG-18-4, SD 14)
	1	CC	SHELF, STAINLESS STEEL, WALL HUNG, 152 MM X 457 MM (6" X 18") (H-08-1, MCS 10360; PG-18-4, SD 15)
P-701	1	CC	SHOWER, BATH FIXTURE, DETACHABLE, WALL MOUNTED, CONCEALED SUPPLIES (PG -18-1, MCS 15450; PG-18-4, SD 13 & 382)
P-104	1	CC	STALL, SHOWER, 910 MM X 910 MM (36" X 36") (PG-18-1, MCS 10170; PG-18-4, SD 13)
	1	CC	WATER CLOSET, WALL HUNG, WITH BED PAN WASHER (PG-18-1, MCS 15450; PG-18-4, SD 389)

# Sleep Study Suite/Diagnostic Room Equipment & Utility Plan

FINAL DRAFT 9-26-95  
REVISED FEBRUARY 1997



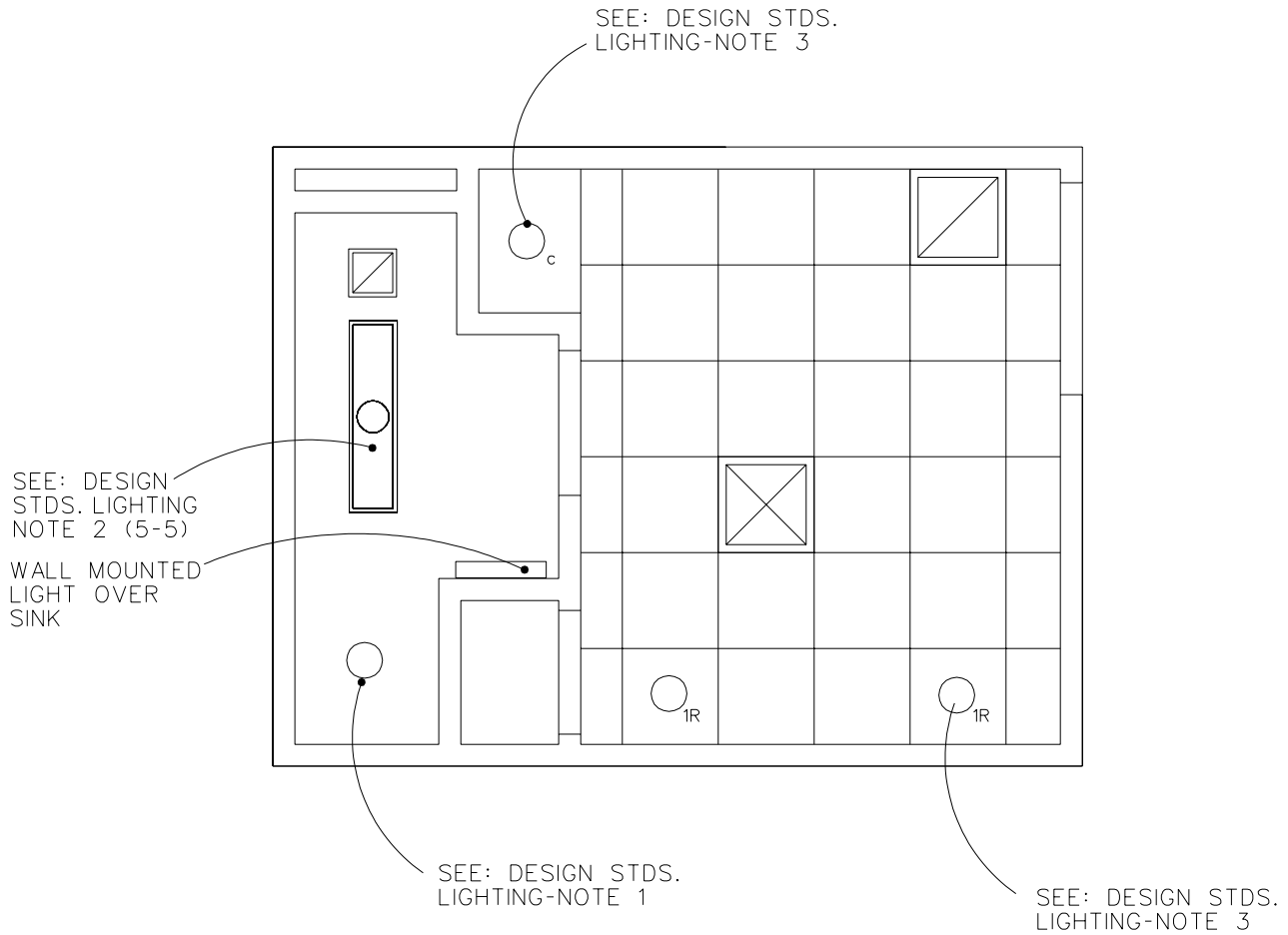
**13.9 NSM**  
**150 NSF**



# Sleep Study Suite With Patient Toilet and Shower

## Reflected Ceiling Plan

FINAL DRAFT 9-26-95  
REVISED FEBRUARY 1997



METERS

2 1



FEET

0 1 2 4



# Sleep Study Suite/Diagnostic Room

## Design Standards

### ARCHITECTURAL

Ceiling:	Acoustical ceiling tile
Ceiling Ht:	2700 mm (9'-0")
Wall Finish:	Paint
Wainscot:	---
Base:	Resilient Base
Floor Finish:	Vinyl composition tile
Slab Depr:	---
Notes:	---

### SPECIAL EQUIPMENT

None

### ELECTRICAL

General:	30 FC
Notes:	1. 600 mm x 1200 mm (2' x 4') recessed fluorescent light fixtures, acrylic prismatic lens, W/2-F32T8 lamps, 3500°k, CRI=75 (minimum).

### POWER

General:	1000 W (Receptacles)
Emergency:	500 W (crash cart receptacle)
Notes:	---

### COMMUNICATIONS

ADP:	Yes
Radio:	---
Telephone:	Yes
Intercom:	Yes
Public Addr:	---
Notes:	1. Junction box for CCTV system with conduit from adjacent patient bedroom 2. Junction box for polysomnograph cabling with conduit from adjacent patient bedroom.

### HEATING, VENTILATING AND AIR CONDITIONING

Dry Bulb Temp Cooling:	24 deg C (76 deg F)
Dry Bulb Temp Heating:	25 deg C (78 deg F)
Minimum % Outside Air:	15%
100% Exhaust Air:	---
Noise Criteria:	NC-35
Steam:	---
Relative Humidity/Cooling:	50%
Relative Humidity/Heating:	30%
Minimum Air Changes/Hr.:	4
Room Pressure:	0
AC Load-Equipment:	75 W/sm (7 W/sf)
AC Load-Lighting:	22 W/sm (2 W/sf)
Number of People:	3
Special Exhaust:	---
Notes:	---

# Sleep Study Suite/Diagnostic Room

## Design Standards

### PLUMBING AND MEDICAL GAS

Cold Water:	Yes
Hot Water:	Yes
Laboratory Air:	---
Laboratory Vacuum:	---
Sanitary Drain:	---
Reagent Grade Water:	---
Medical Air:	---
Medical Vacuum:	---
Oxygen:	---
Notes:	---



# Sleep Study Diagnostic Room

## Equipment Guide List

SYMBOL	QTY	AI	DESCRIPTION
			<i>NOTE: ELECTROMAGNETIC INTERFERENCE (EMI) EMI., SHIELDING PROVIDED IF THE LOCAL CONDITIONS DO NOT MEET CRITERIA ENUMERATED IN VA STANDARD 58-1 OF H-18-3, DATED JUNE 23, 1989.</i>
			<i>NOTE: ELECTRICAL RECEPTACLE FOR CRASH CART TO BE ON EMERGENCY POWER.</i>
			<i>NOTE: PROVIDE INTERCOM BETWEEN SUITE AND DIAGNOSTIC ROOM.</i>
			<i>NOTE: ONE POLYSOMNOGRAPH MACHINE PER EACH PATIENT'S BED ROOM.</i>
			<i>NOTE: INTEGRAL BLINDS (ADJUSTABLE - ON/OFF) (PG-18-1, MCS 12513)</i>
	1	VV	BOOKSHELF 610 MM X 305 MM X 910 MM (24" X 12" X 36")
	1	VV	CART, EMERGENCY, "CRASH CART" APPROX., 914 MM X 533 MM (36" X 21") -IN ADJACENT CORRIDOR
	AR	CC	COUNTER, WITH KNEE SPACE, 787 MM (31") HIGH (PG-18-1, MCS 12301 OR 12302)
	2	VV	CHAIR, POSTURE-TYPE, SWIVEL
	1	VV	CLOCK, BATTERY OPERATED
	2	VV	CONTROL CONSOLE, CCTV SYSTEM
	1	VV	DISPENSER, BI-FOLD PAPER TOWEL, SURFACE MOUNTED
	1	VV	DISPENSER, SOAP, LIQUID, WALL MOUNTED
	1	VV	ELECTRICAL TUBE DRYING RACK
P-414	1	VV	LAVATORY, STRAIGHT BACK (PG-18-1; MCS 15450)
	2	VV	MACHINE, POLYSOMNOGRAPH, WITH TWELVE (12) CHANNELS CAPABILITY
	2	VV	MONITORS, 230 MM (9"), CCTV
	2	VV	RECEPTACLE, WASTE, 330 MM (13") DIAMETER
	2	VV	RECORDER, VIDEO, CCTV SYSTEM
	1	VV	SUPPLY CABINET, FIRE PROOF CAB. 910 MM X 435 MM X 1830 MM (36" X 18" X 72")