

Section 3

Relationship Diagrams

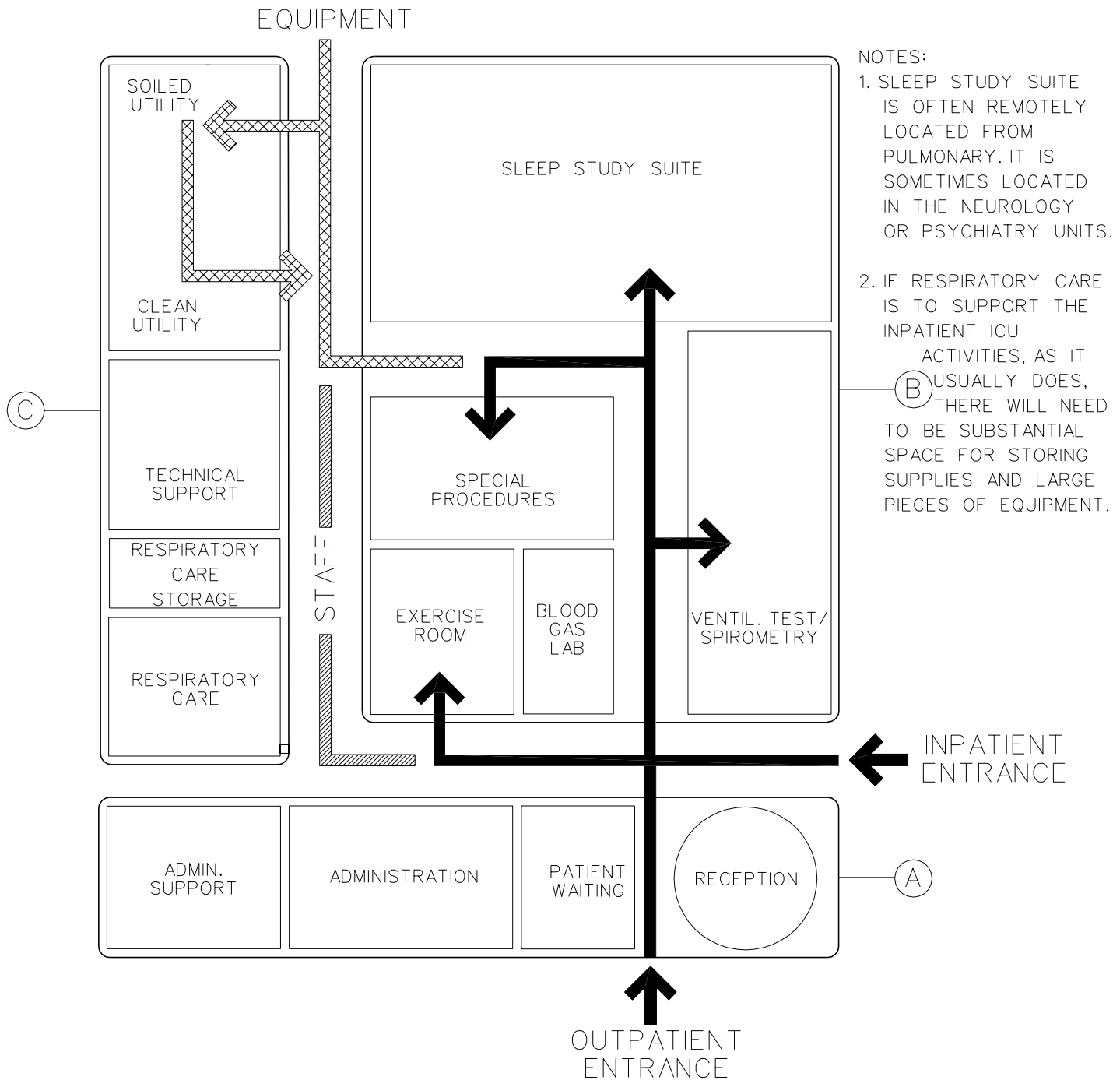
Page

Pulmonary Medicine Functional Diagram **3 - 1**

Sleep Study Suite Functional Diagram... **3 - 2**

Pulmonary Medicine Functional Diagram

FINAL DRAFT 9-26-95
REVISED FEBRUARY 1997



NOTES:
1. SLEEP STUDY SUITE IS OFTEN REMOTELY LOCATED FROM PULMONARY. IT IS SOMETIMES LOCATED IN THE NEUROLOGY OR PSYCHIATRY UNITS.
2. IF RESPIRATORY CARE IS TO SUPPORT THE INPATIENT ICU ACTIVITIES, AS IT USUALLY DOES, THERE WILL NEED TO BE SUBSTANTIAL SPACE FOR STORING SUPPLIES AND LARGE PIECES OF EQUIPMENT.

(A) - ADMINISTRATION
OFFICES, ADMINISTRATIVE
ADMINISTRATIVE SUPPORT
STAFF LOCKERS/LOUNGE
TOILET, STAFF
RECEPTION
OFFICE, SEC./RECEPT.
ACTIVE FILE STORAGE
PATIENT WAITING

(B) - PATIENT CARE
VENTILATORY TEST ROOM -
SPIROMETRY
BLOOD GAS ANALYSIS ROOM
EXERCISE ROOM
SPECIAL PROCEDURES ROOM
SLEEP STUDY SUITE
PATIENT BEDROOM
BATHROOM, WHEELCHAIR
DIAGNOSTIC ROOM
OFFICE, PHYSICIAN
STORAGE
RECEPTIONIST

(C) - STAFF SUPPORT
RESPIRATORY CARE
OFFICES
REPORT ROOM
STORAGE
CLEAN SUPPLY/SOILED UTILITY
TECHNICAL SUPPORT
CLEANUP/REPAIR/TESTING
STORAGE, SUPPLIES, SPARE PARTS
EQUIPMENT STORAGE
GAS CYLINDER STORAGE
VIEWING/STUDIES/LIBRARY

Pulmonary Medicine - Sleep Study Suite Functional Diagram

FINAL DRAFT 9-26-95
REVISED FEBRUARY 1997

