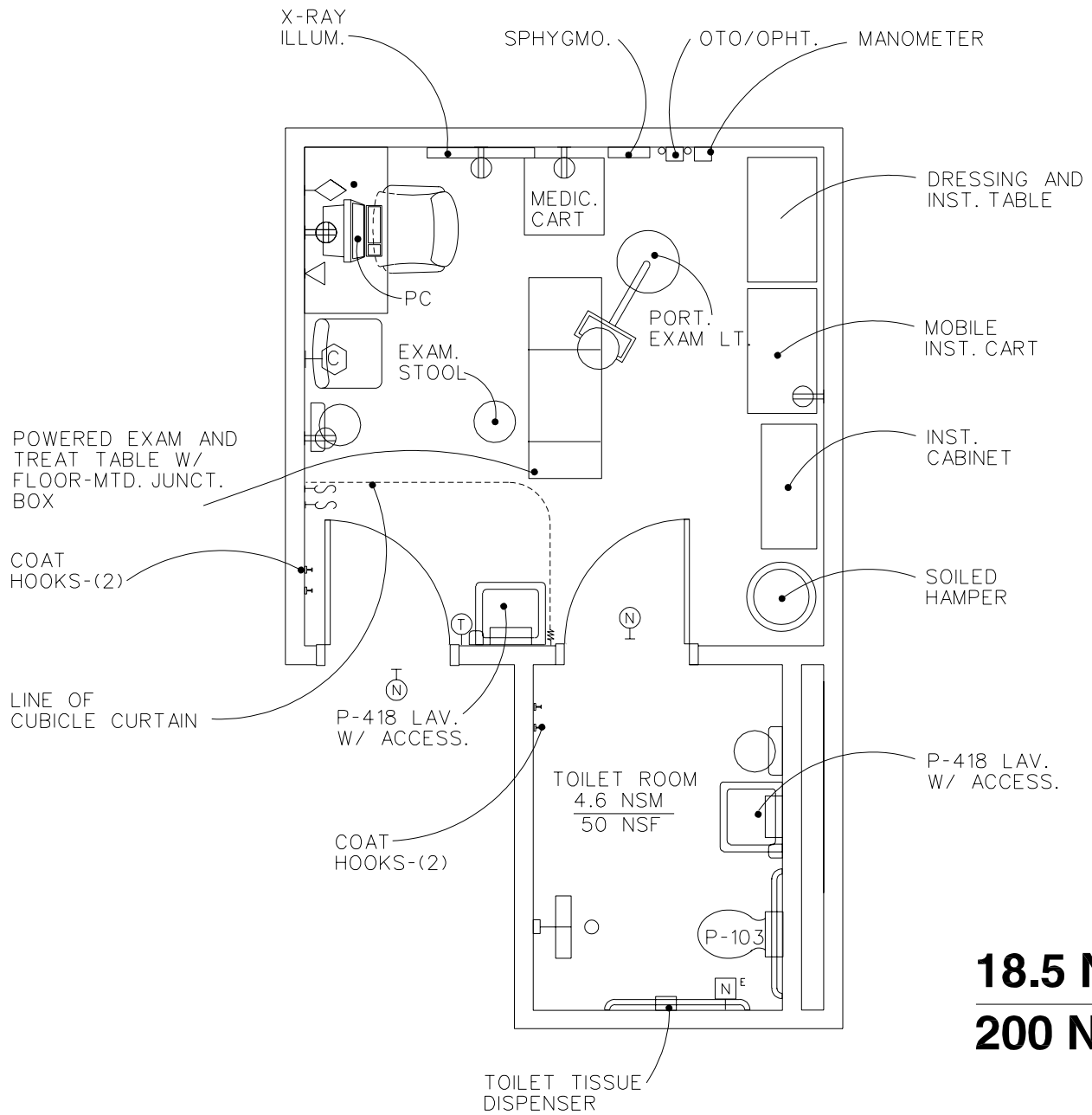
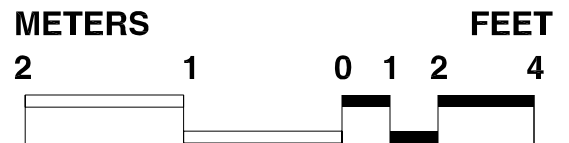


Gastric (Esophageal) Motility Procedure Room Equipment & Utility Plan

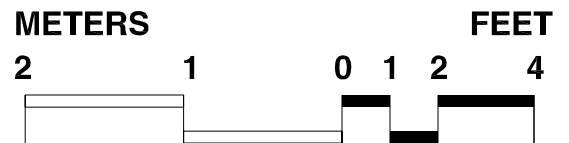
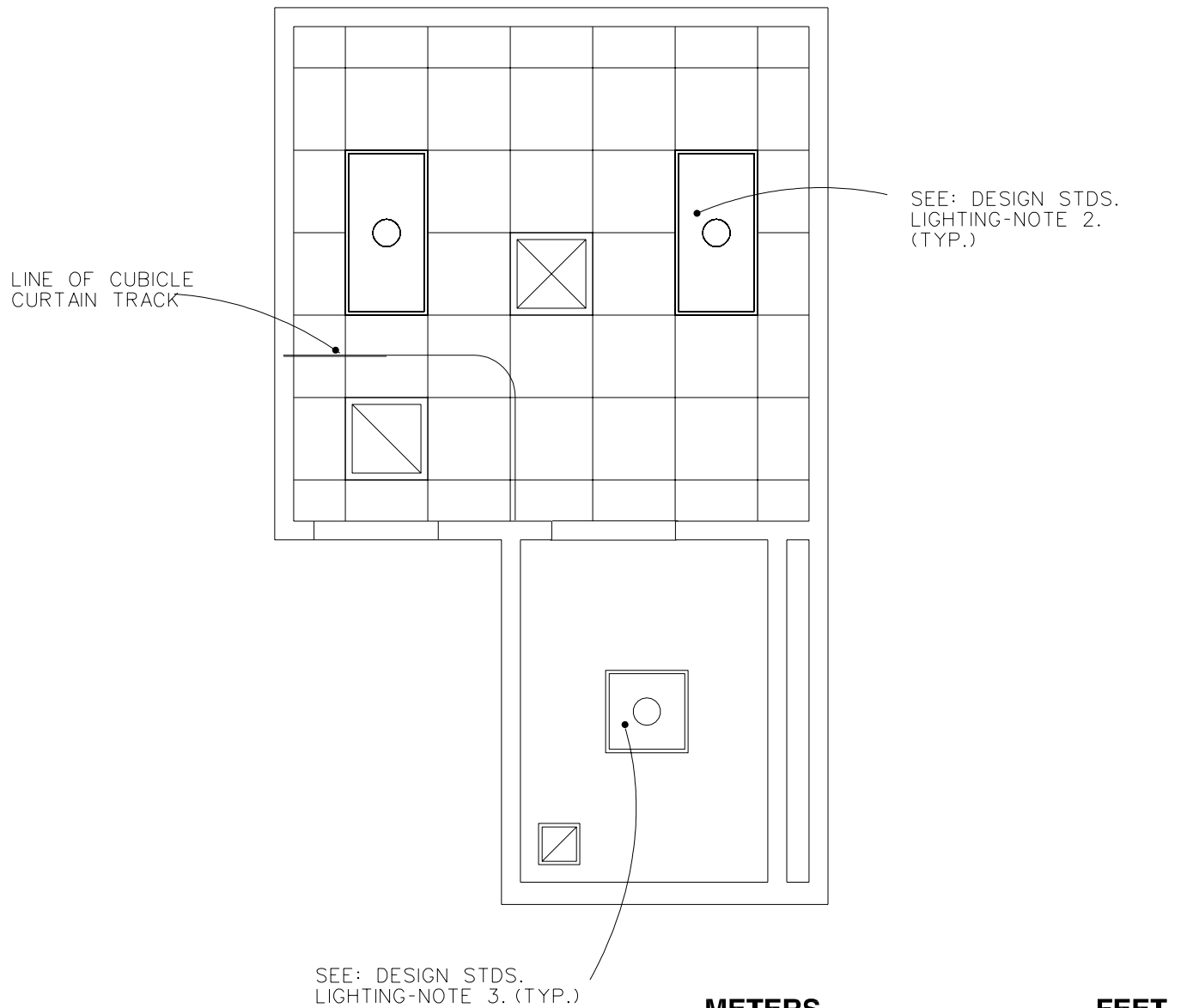


18.5 NSM
200 NSF



Gastric (Esophageal) Motility Procedure Room Reflected Ceiling Plan

FINAL DRAFT 10-31-95
Revised 1/97



Design Standards

Gastric (Esophageal) Motility Procedure Room

ARCHITECTURAL

Ceiling:	Acoustic lay-in ceiling tile
Ceiling Ht:	2700 mm (9'-0")
Wall Finish:	Paint
	Ceramic Tile in Toilet Rm.
Wainscot:	--
Base:	Resilient sheet flooring integral base/Ceramic Tile in Toilet Rm.
Floor Finish:	Resilient sheet flooring
	Ceramic Tile in Toilet Rm.
Slab Depr:	--
Notes:	1. 900 mm (3'-0") wide door.

SPECIAL EQUIPMENT

None

LIGHTING

General:	50 FC ambient/100 FC task
Special:	--
Notes:	<ol style="list-style-type: none"> Dual-switching provides 50/100 FC levels. 600 mm x 1200 mm (2'x4') recessed fluorescent light fixture, acrylic prismatic lens, W/3-F32T8 lamps, 3500°K, CRI=75 (minimum). 600 mm x 600 mm (2'x2') recessed fluorescent light fixture, acrylic prismatic lens, W/2-FB31 lamps, 3500° K CRI=75 (minimum)

POWER

General:	1400W (receptacles); 1000W (dedicated recept./circuit for exam table).
Emergency:	--
Notes:	

COMMUNICATION

ADP:	Yes
Radio:	--
Telephone:	Yes
Intercom:	--
Pub. Addr:	--
Notes:	

HEATING VENTILATING & AIR CONDITIONING

Dry Bulb Temp Cooling:	25°C (78°F)
Dry Bulb Temp Heating:	22°C (72°F)
Minimum % Outside Air:	--
100% Exhaust Air:	Yes
Noise Criteria:	NC-40
Steam:	--
Relative Humidity/Cooling:	50%
Relative Humidity/Heating:	30%
Minimum Air Changes/Hr.:	8
Room Pressure:	Negative
AC Load Lighting:	19 W/m ² (1.8 W/sf)
AC Load-Equipment:	65 W/m ² (6 W/sf)
Number of People:	3
Special Exhaust:	Yes
Notes:	

PLUMBING AND MEDICAL GASES

Cold Water:	Yes
Hot Water:	Yes
Laboratory Air:	--
Laboratory Vacuum:	--
Sanitary Drain:	Yes
Reagent Grade Water:	--
Medical Air:	--
Medical Vacuum:	--
Oxygen:	--
Notes:	

Equipment Guide List

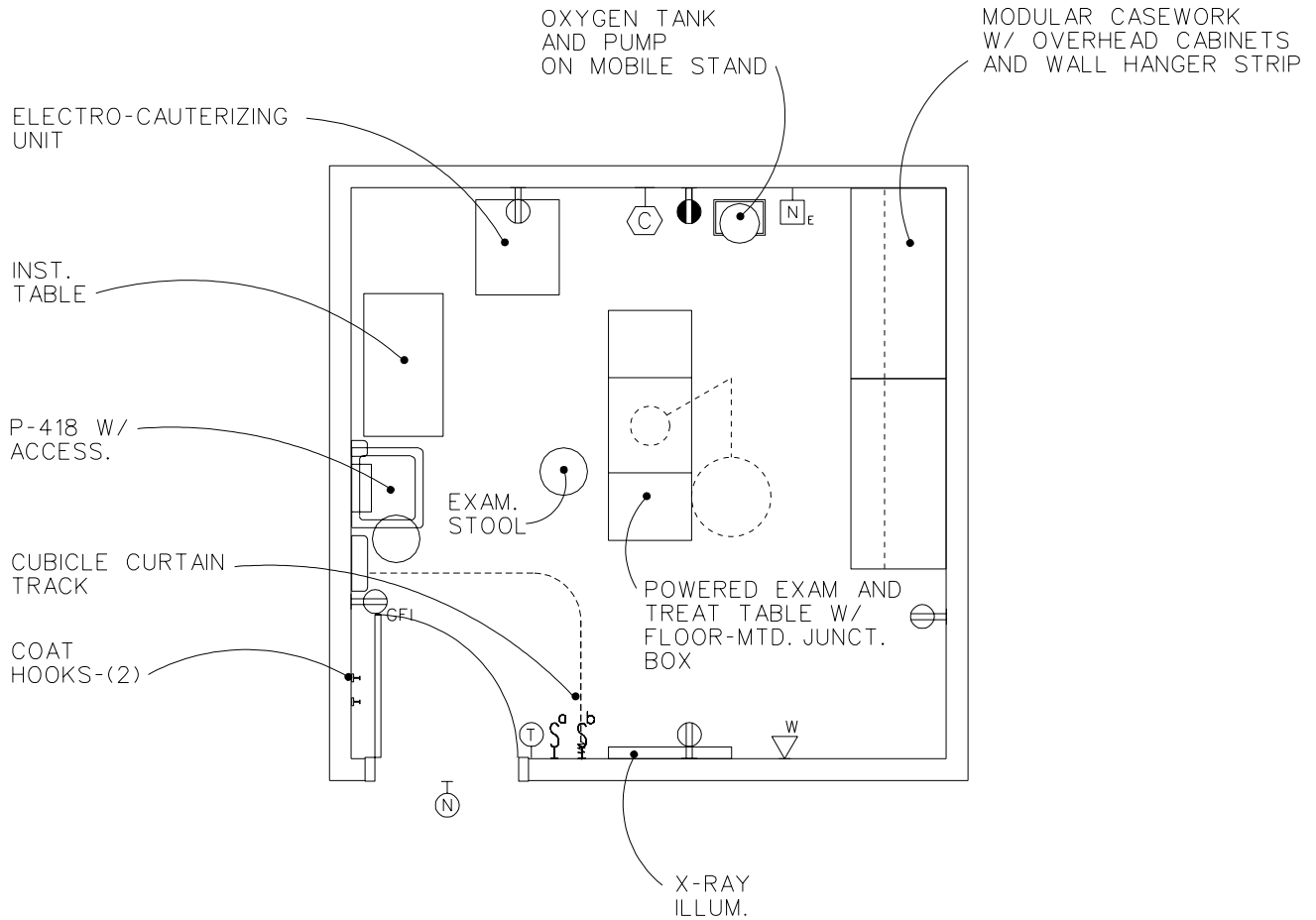
Gastric (Esophageal) Motility Procedure Room

SYMBOL	QTY	AI	DESCRIPTION
P-418	1	CC	LAVATORY, SENSOR CONTROL (PG-18-1, MCS 15450; VOL. 3 SD 380)
	1	VV	CABINET, INSTRUMENT AND TREATMENT, 910 mm W x 405 mm D x 1980 mm H (36"W x 16"D x 78"H)
	1	VV	CART, MEDICATION, W/IV POLE
	AR	VV	CART, MOBIL, INSTRUMENT, 910 MM X 500 MM (36" X 20")
	1	VV	CHAIR, ROTARY, WITH ARMS
	AR	VV	CHAIR, STRAIGHT, WITHOUT ARMS
	1	VV	CLOCK, BATTERY OPERATED
	1	VV	PC, COMPUTER SYSTEM, WITH KEYBOARD
	1	VV	DESK, SINGLE PEDESTAL, 1200 mm W x 760 mm D x 760 mm H (48"W x 30"D x 30" H)
	1	VV	DISPENSER, BIFOLD PAPER TOWEL, SURFACE MOUNTED.
	1	VV	DISPENSER, SOAP, LIQUID, WALL MOUNTED
	AR	VV	HAMPER, SOILED LINEN, WITH HINGED SELF CLOSING TOP 500 mm (20") DIAMETER
	AR	VV	HOOK, CLOTHES, WALL MOUNTED
	1	VV	ILLUMINATOR, X-RAY FILM, 120 VOLTS, 150 WATTS, WALL MOUNTED, INDIVIDUAL SWITCH FOR TWO, 355 mm x 430 mm (14" x 17") RADIOGRAPHS, 790 mm W x 500 mm H (31"W x 20"H)
	AR	VV	LIGHT, EXAMINING, PORTABLE, 120 VOLTS, 20 AMPS APPROX. 455 mm (18") DIAMETER x 1905 mm H (75"H)
	1	VV	MANOMETER, ESOPHAGEAL, W/ RECORDER
	1	VV	OPHTHALMOSCOPE, WALL HUNG
	1	VV	OTOSCOPE, WALL HUNG
	1	VV	RECEPTACLE, WASTE, STEP-ON TYPE, APPROX. 305 mm (12") DIAMETER
	1	VV	SPHYGMOMANOMETER, WALL HUNG
	1	VV	STOOL, EXAMINING, ADJUSTABLE
	1	VV	TABLE, INSTRUMENT, DRESSING, SORROSION RESISTING STEEL, 500 mm W x 910 mm L x 890 mm H (20"W x 36"L x 35"H)
	1	VV	TABLE, EXAMINING AND TREATMENT, MOTORIZED.

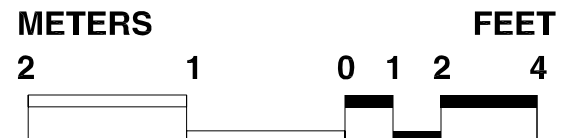
Equipment Guide List Gastric (Esophageal) Motility Procedure Room

SYMBOL	QTY	AI	DESCRIPTION
P-103	1	CC	WATER CLOSET, WALL HUNG (PG-18-1, MCS 15450; H-08-4)
	1	CC	DISPENSER, TOILET TISSUE, DOUBLE ROLL (PG-18-1, MCS 10800; PG-18-4)
P-418	1	CC	LAVATORY, SENSOR CONTROL (HPG-18-1, MCS 15450; VOL. 3 SD 380)
T45	1	CC	SHELF, CORROSION RESISTING STEEL, 305mm x 127mm (12" x 5") (H-08-1, MCS 10360; PG-18-4, SD 60H)
	1	VV	DISPENSER, SOAP, LIQUID, WALL MOUNTED
	1	VV	DISPENSER, BIFOLD PAPER TOWEL, SURFACE MOUNTED
	1	VV	RECEPTACLE, WASTE, STEP-ON TYPE, APPROX. 305 mm (12") DIAMETER
	AR	CC	BAR, GRAB FOR WATER CLOSET (PG-18-1, MCS 10800; PG-18-4, SD 12)
	2	CC	HOOK, CLOTHES (PG-18-1, MCS 10800)
	1	CC	MIRROR, WHEELCHAIR, 610 mm W x 910 mm H (24"W x 36"H) (PG-18-1, MCS 10800; PG-18-4, SD 15)

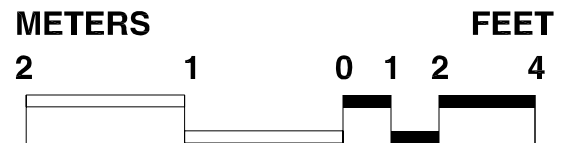
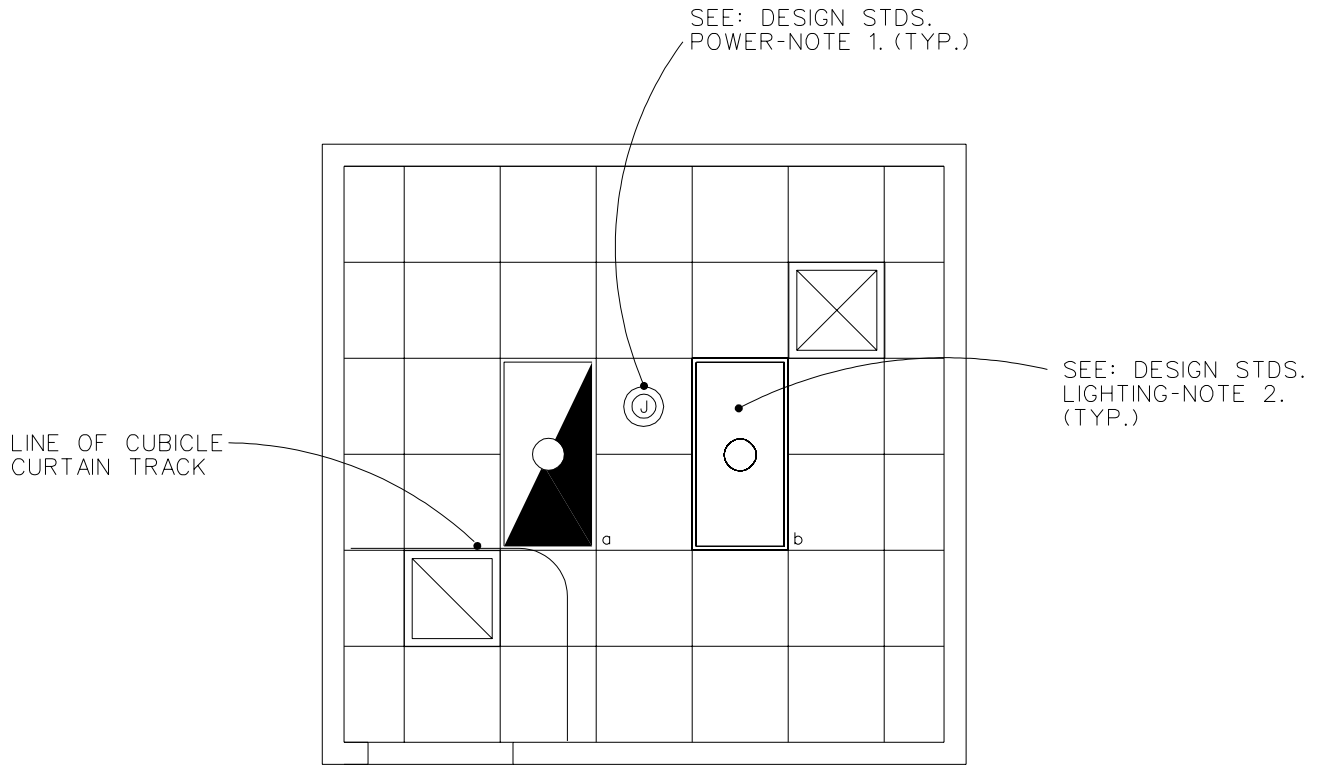
Dermatology Procedure/Treatment Rm FINAL DRAFT 10-31-95 Equipment & Utility Plan Revised 1/97



13.9 NSM
150 NSF



Dermatology Procedure/Treatment Rm FINAL DRAFT 10-31-95 Reflected Ceiling Plan Revised 1/97



Design Standards

Dermatology Procedure Treatment Room

ARCHITECTURAL

Ceiling:	Acoustic lay-in ceiling tile
Ceiling Ht:	2700 mm (9'-0")
Wall Finish:	Paint
Wainscot:	--
Base:	Resilient base
Floor Finish:	Vinyl composition tile
Slab Depr:	--
Notes:	<ol style="list-style-type: none"> 1. Provide STC 40 partitions and door. 2. 900 mm (3'-0") wide door.

SPECIAL EQUIPMENT

None

LIGHTING

General:	100 FC
Special:	--
Notes:	<ol style="list-style-type: none"> 1. 50% of lighting on critical power. 2. 600 mm x 1200 mm (2'x4') recessed fluorescent light fixture, acrylic prismatic lens W/4-F32T8 lamps, 3500°K, CRI=75 (minimum).

POWER

General:	600W (receptacles); 1000W (dedicated receptacle/circuit for electrocautery unit).
Emergency:	200W (receptacle)
Notes:	<ol style="list-style-type: none"> 1. Junction box for 120V power connection to surgical light.

COMMUNICATIONS

ADP:	--
Radio:	--
Telephone:	Yes
Intercom:	--
Pub. Addr:	--
Notes:	<ol style="list-style-type: none"> 1. Nurse call

HEATING, VENTILATING AND AIR CONDITIONING

Dry Bulb Temp Cooling:	25°C (78°F)
Dry Bulb Temp Heating:	22°C (72°F)
Minimum % Outside Air:	15
100% Exhaust Air:	--
Noise Criteria:	NC-40
Steam:	--
Relative Humidity/Cooling:	50%
Relative Humidity/Heating:	30%
Minimum Air Changes/Hr.:	8
Room Pressure:	0
AC Load Lighting:	19 W/m ² (1.8 W/sf)
AC Load-Equipment:	65 W/m ² (6 W/sf)
Number of People:	3
Special Exhaust:	--
Notes:	

PLUMBING AND MEDICAL GASES

Cold Water:	Yes
Hot Water:	Yes
Laboratory Air:	--
Laboratory Vacuum:	--
Sanitary Drain:	Yes
Reagent Grade Water:	--
Medical Air:	--
Medical Vacuum:	--
Oxygen:	--
Notes:	

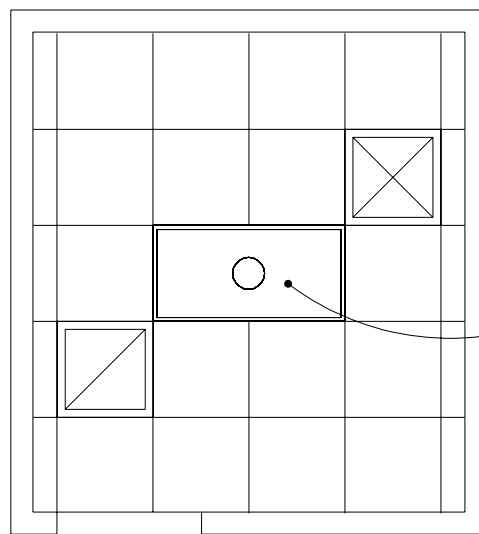
Equipment Guide List

Dermatology Procedure Room

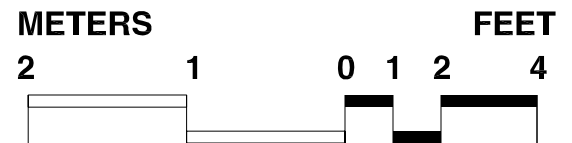
SYMBOL	QTY	AI	DESCRIPTION
P-418	1	CC	LAVATORY, SENSOR CONTROL (PG-18-1, MCS 15450; VOL. 3 SD 380)
	1	CF	LIGHT, SMALL, SURGICAL WITH VARIABLE INTENSITY CONTROL, SINGLE POINT SUSPENSION, CEILING MOUNTED, TYPE 840B (LOCATION INSTRUCTION AVAILABLE FROM ELECTRICAL SERVICE) (PG-18-1, MCS 16515)
	AR	CF	MODULAR CASEWORK, W/ OVERHEAD CABINETS AND WALL HANGER STRIP
	1	VV	CLOCK, BATTERY OPERATED
	1	VV	DISPENSER, BIFOLD PAPER TOWEL, SURFACE MOUNTED.
	1	VV	DISPENSER, SOAP, LIQUID, WALL MOUNTED
	1	VV	ELECTRO-CAUTERIZING UNIT, MOBILE, APPROX. 535 mm W x 610 mm D (21"W X 24"D)
	2	VV	HOOK, COAT, WALL MOUNTED
	1	VV	ILLUMINATOR, X-RAY FILM, 120 VOLTS, 150 WATTS, WALL MOUNTED, INDIVIDUAL SWITCH FOR TWO, 355 mm x 450 mm (14" X 17") RADIOGRAPHS, 750 mm W x 500 mm H (31"W X 20"H)
	1	VV	RECEPTACLE, WASTE, STEP ON TYPE, APPROX., 305 mm (12") DIAMETER
	1	VV	TABLE, EXAMINING AND TREATMENT, MOTORIZED
	1	VV	TABLE, INSTRUMENT, DRESSING, CORROSION RESISTING STEEL, 500 mm W x 910 mm L x 840 mm H (20"W X 36"L X 35"H)

Dermatology Medication Preparation Storage Room Reflected Ceiling Plan

FINAL DRAFT 10-31-95
Revised 1/97



SEE: DESIGN STDS.
LIGHTING-NOTE 1. (TYP.)



Design Standards

Dermatology Medication Preparation Storage Room

ARCHITECTURAL

Ceiling: Acoustic lay-in ceiling tile
 Ceiling Ht: 2700 mm (9'-0")
 Wall Finish: Paint
 Wainscot: --
 Base: Resilient base
 Floor Finish: Vinyl composition tile
 Slab Depr: --
 Notes: 1. 900 mm (3'-0") wide doors

SPECIAL EQUIPMENT

None

LIGHTING

General: 30 FC
 Special: --
 Notes: 1. 600 mm x 1200 mm (2'x4') recessed fluorescent light fixture, acrylic prismatic lens, W/2-F32T8 lamps, 3500°K, CRI=75 (Minimum)

POWER

General: 600W (receptacles)
 Emergency: --
 Notes:

COMMUNICATION

ADP: --
 Radio: --
 Telephone: Yes
 Intercom: --
 Pub. Addr: --
 Notes:

HEATING, VENTILATING AND AIR CONDITIONING

Dry Bulb Temp Cooling: 25°C (78°F)
 Dry Bulb Temp Heating: 22°C (72°F)
 Minimum % Outside Air: 15
 100% Exhaust Air: --
 Noise Criteria: NC-40
 Steam: --
 Relative Humidity/Cooling: 50%
 Relative Humidity/Heating: 30%
 Minimum Air Changes/Hr.: 4
 Room Pressure: 0
 AC Load Lighting: 78 W/m² (7 W/sf)
 AC Load-Equipment: 32 W/ m² (3 W/sf)
 Number of People: 1
 Special Exhaust: --
 Notes:

PLUMBING AND MEDICAL GASES

Cold Water: Yes
 Hot Water: Yes
 Laboratory Air: --
 Laboratory Vacuum: --
 Sanitary Drain: Yes
 Reagent Grade Water: --
 Medical Air: --
 Medical Vacuum: --
 Oxygen: --
 Notes:

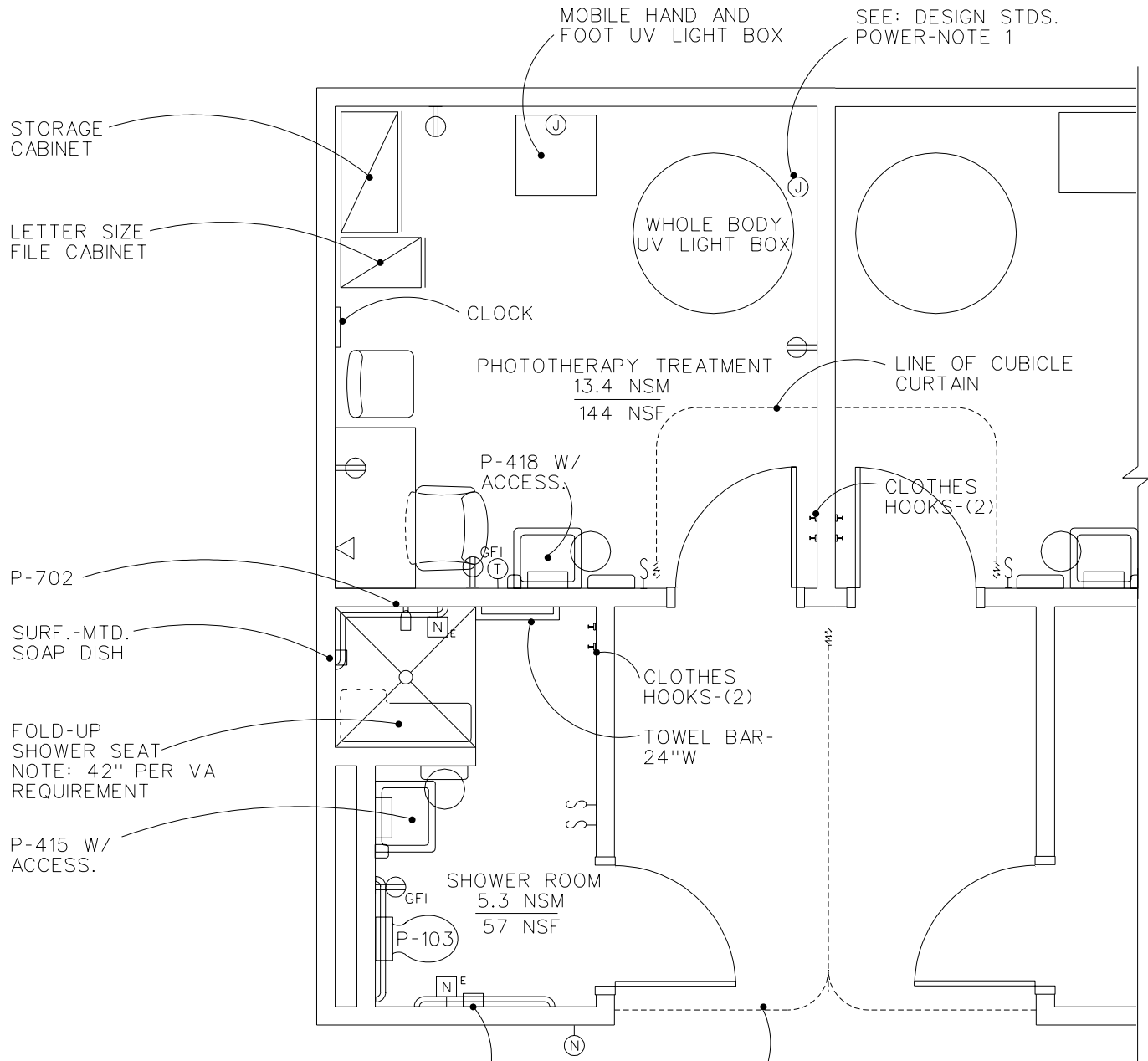
Equipment Guide List

Dermatology Medication Preparation Storage Room

SYMBOL	QTY	AI	DESCRIPTION
T-22C	1	CC	KITCHEN CABINET, CORROSION RESISTING STEEL, 910 mm x 610 mm x 2130 mm (3'-0" x 2'-0" x 7'-0") (H-08-1, MCS 10360; PG-18-4, SD 71A)
T14A	2	CC	CABINET, CORROSION RESISTING STEEL, 6 ADJUSTIBLE SHELVES, SLIDING DOORS, METAL SLOPED TOP 1220 mm x 555 mm x 2130 mm (4'-0" x 1'-10" x 7'-0") (PG-18-1 MCS 10360, PG-18-6 CAB TYPE 14A 12301-10)
P-418	1	CC	LAVATORY, SENSOR CONTROL (PG-18-1, MCS 15450; VOL. 3 SD 380)
	1	VV	DISPENSER, BIFOLD PAPER TOWEL, SURFACE MOUNTED
	1	VV	DISPENSER, SOAP, LIQUID, WALL MOUNTED
	1	VV	RECEPTACLE, WASTE, STEP ON TYPE, APPROX., 305 mm (12") DIAMETER

Phototherapy Treatment Room Phototherapy Shower Room Equipment & Utility Plan

FINAL DRAFT 10-31-95
Revised 1/97



SEE: DESIGN STDS.
POWER-NOTE 1

STORAGE CABINET

LETTER SIZE FILE CABINET

CLOCK

PHOTOTHERAPY TREATMENT
13.4 NSM
144 NSF

P-418 W/
ACCESS.

P-702

SURF.-MTD.
SOAP DISH

FOLD-UP
SHOWER SEAT
NOTE: 42" PER VA
REQUIREMENT

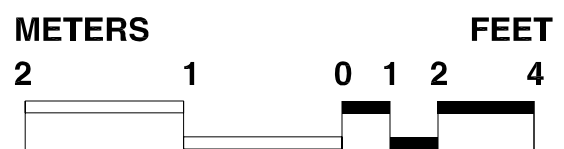
P-415 W/
ACCESS.

SHOWER ROOM
5.3 NSM
57 NSF

TOILET TISSUE
DISPENSER

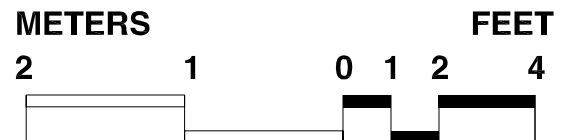
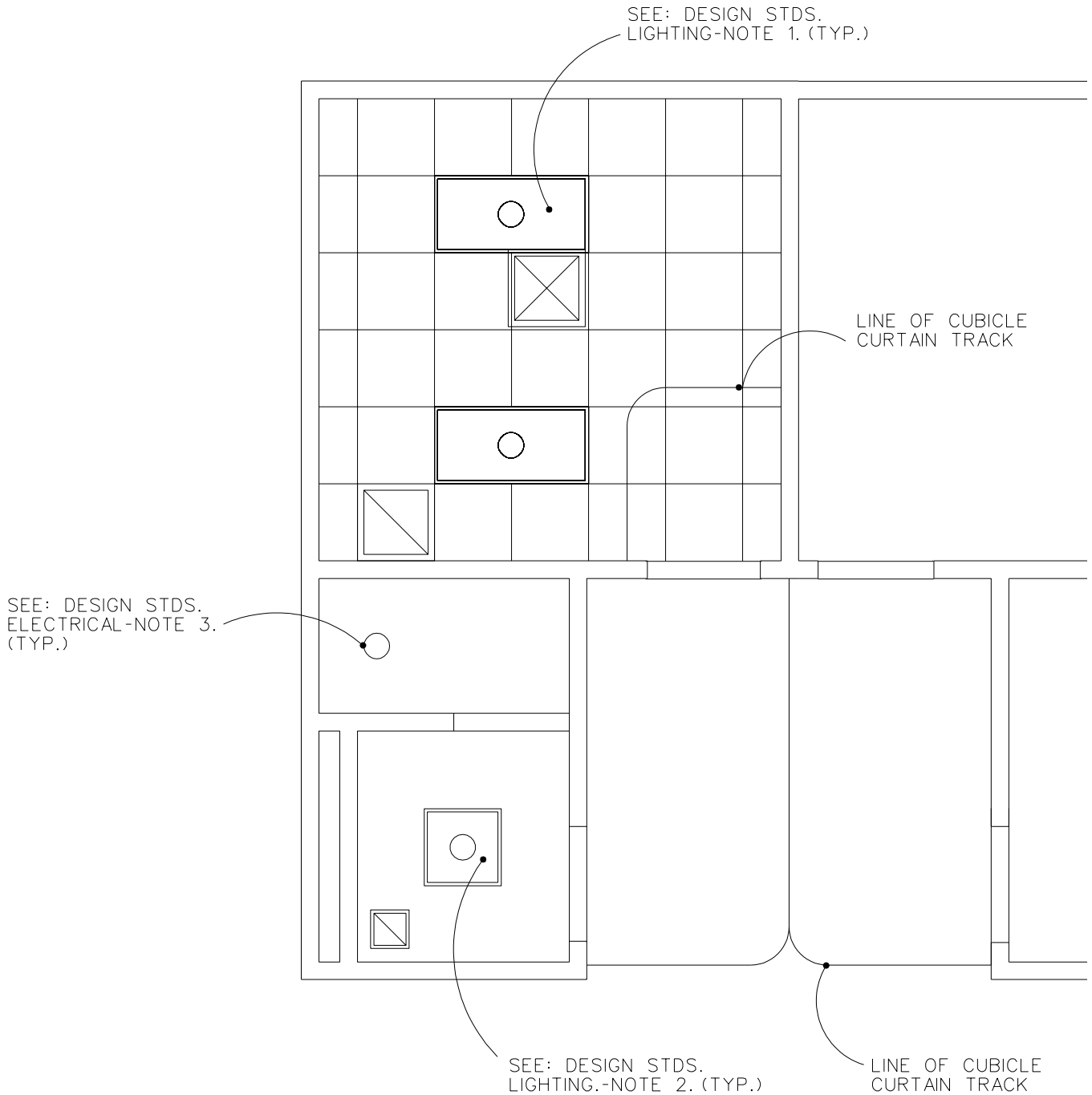
LINE OF CUBICLE
CURTAIN

18.7 NSM
201 NSF



Phototherapy Treatment Room Phototherapy Shower Room Reflected Ceiling Plan

FINAL DRAFT 10-31-95
Revised 1/97



Design Standards

Phototherapy TreatmentRm/Phototherapy ShowerRm

ARCHITECTURAL- Treatment Room

Ceiling:	Acoustic lay-in ceiling tile
Ceiling Ht:	2700 mm (9'-0")
Wall Finish:	Paint
Wainscot:	--
Base:	Resilient sheet flooring integral base
Floor Finish:	Resilient
Slab Depr:	--
Notes:	1. 900 mm (3'-0") wide door.

ARCHITECTURAL- Shower/Toilet

Ceiling:	Portland cement plaster
Ceiling Ht:	2700 mm (9'-0")
Wall Finish:	Ceramic tile, full height
Wainscot:	--
Base:	Ceramic tile
Floor Finish:	Ceramic tile
Slab Depr:	75 mm (3") shower depression
Notes:	1. 900 mm (3'-0") wide door.

SPECIAL EQUIPMENT

None

LIGHTING

General:	Treat. Room 50 FC Toilet/shower 30 FC
Special:	--
Notes:	1. 600 mm x 1200 mm (2'x4') recessed fluorescent light fixture, acrylic prismatic lens, W/3-F32T8 lamps, 3500°K, CRI=75 (minimum). 2. 600 x 600 mm (2'x2') recessed fluorescent light fixture, acrylic prismatic lens, W/2-FB31 lamps, 3500°K, CRI=75 (minimum). 3. Recessed incandescent shower light, drop opal lens, 150W-A21 lamp, UL listed for wet locations.

POWER

General:	1000W (receptacles)
Emergency:	--
Notes:	1. Junction box for 208V power connection to UV light boxes.

COMMUNICATION

ADP:	--
Radio:	--
Telephone:	Yes
Intercom:	--
Pub. Addr:	--
Notes:	1. Nurse call in patient shower to be mounted 1200 mm (48") AFF.

HEATING, VENTILATING AND AIR**CONDITIONING**

Dry Bulb Temp Cooling:	24°C (76°F)
Dry Bulb Temp Heating:	25°C (78°F)
Minimum % Outside Air:	100
100% Exhaust Air:	Yes
Noise Criteria:	NC-40
Steam:	--
Relative Humidity/Cooling:	50%
Relative Humidity/Heating:	30%
Minimum Air Changes/Hr.:	8
Room Pressure:	Negative
AC Load Lighting:	46 W/m ² (4.2 W/sf)
AC Load-Equipment:	(5 W/sf to 10 W/sf) 54 W/sm - 109 W/sm
Number of People:	3
Special Exhaust:	Yes
Notes:	1. Coordinate equipment heat gain requirements with supplier.

PLUMBING AND MEDICAL GASES

Cold Water	Yes
Hot Water:	Yes
Laboratory Air:	--
Laboratory Vacuum:	--
Sanitary Drain:	Yes
Reagent Grade Water:	--
Medical Air:	--
Medical Vacuum:	--
Oxygen:	--
Notes:	

Equipment Guide List

Phototherapy Treatment Room

SYMBOL	QTY	AI	DESCRIPTION
	2	CC	HOOK, CLOTHES (PG-18-1, MCS 10800)
P-418	1	CC	LAVATORY, SENSOR CONTROL (PG-18-1, MCS 15450; VOL. 3 SD 380)
	2	CC	TRACK, CURTAIN, CUBICLE, CEILING TYPE, SURFACE MOUNTED (PG-18-1, MCS 10152)
	1	VV	CABINET, FILING (LETTER SIZE) 5 DRAWER, APPROX. 380 mm W x 6350 mm D x 1520 mm H (15"W x 25"D x 60"H)
	1	VV	CABINET, STORAGE, STEEL, FREESTANDING WITH, 2 DOORS, 5 ADJUSTABLE SHELVES AND LOCK, 36"W X 910 mm W x 455 mm D x 2130 mm H (18"D x 84"H)
	1	VV	CHAIR, ROTARY, WITH ARMS
AR		VV	CHAIR, STRAIGHT, WITH ARMS
	1	VV	CLOCK, BATTERY OPERATED
	1	VV	DESK, DOUBLE PEDESTAL, 1520 mm W x 760 mm D x 800 mm D (60"W x 30"D x 29 -1/2"H)
	1	VV	DISPENSER, BIFOLD PAPER TOWEL, SURFACE MOUNTED.
	1	VV	DISPENSER, SOAP, LIQUID, WALL MOUNTED
	1	VV	HAND AND FOOT UV LIGHT BOX, ON MOBILE STAND, 220 VOLT, APPROX., 610 mm W x 610 mm D x 760 mm H (24"W X 24"D X 30"H)
	1	VV	RECEPTACLE, WASTE, STEP ON TYPE, APPROX., 305 mm (12") DIAMETER
	1	VV	WHOLE BODY UV LIGHT BOX, 220 VOLT, APPROX., 100 mm (4') DIAMETER IN CLOSED POSITION

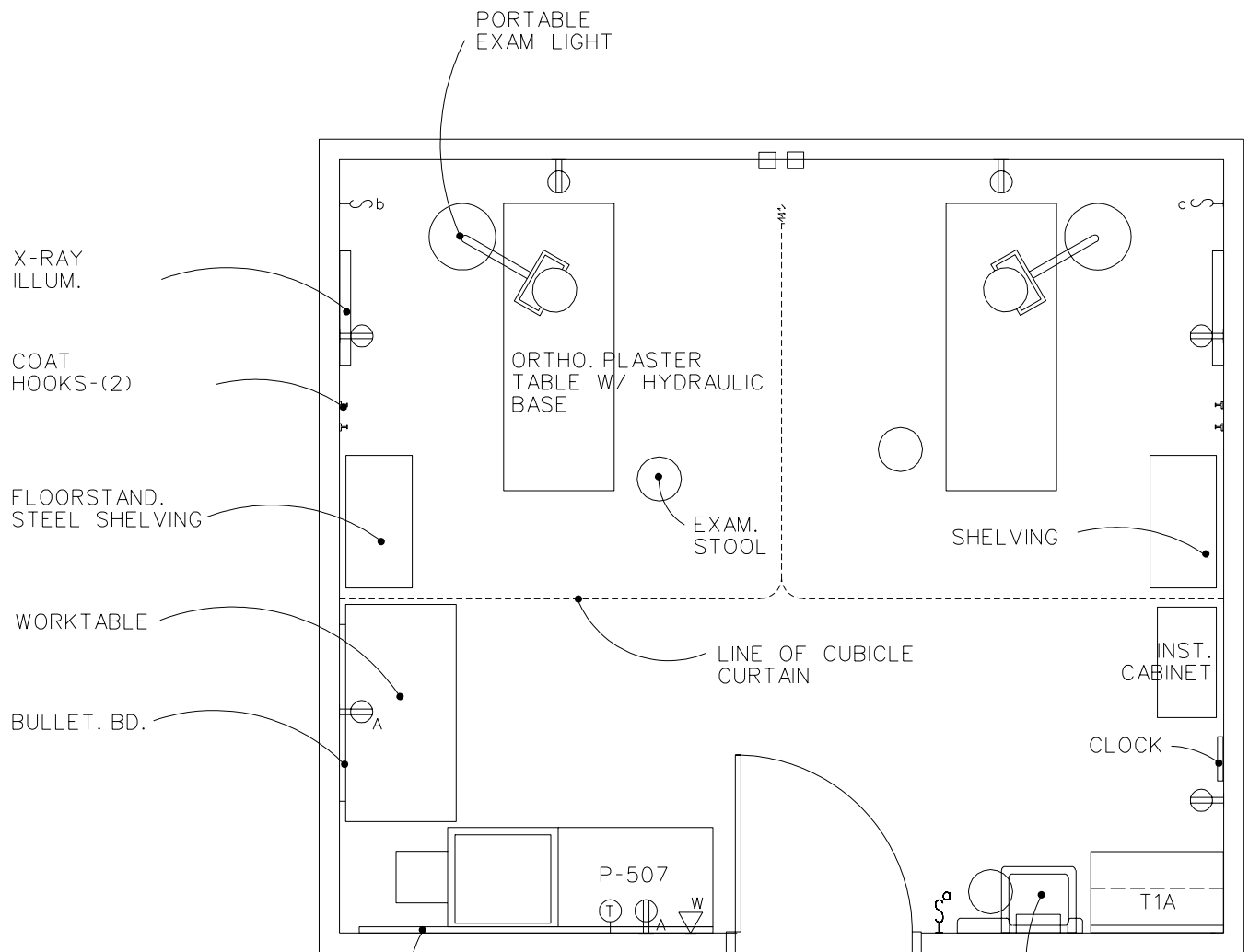
Equipment Guide List

Phototherapy Shower Room

SYMBOL	QTY	AI	DESCRIPTION
	1	CC	BAR, TOWEL (PG-18-1, MCS 10800)
	AR	CC	BAR, GRAB FOR TUB OR SHOWER (PG-18-1, MCS 10800; PG-18-4, SD 13)
	1	CC	DISH, SOAP, SURFACE MOUNTED (PG-18-1, MCS 10800)
	2	CC	HOOK, CLOTHES (PG-18-1, MCS 10800)
P-415	1	CC	LAVATORY, STRAIGHT BACK (PG-18-1, MCS 15450)
P-702	1	CC	SHOWER, BATH FIXTURE, WALL MOUNTED, CONCEALED SUPPLIES (PG-18-1, MCS 15450; PG-18-4, SD 13A)
	AR	CC	BAR, GRAB FOR WATER CLOSET (PG-18-1 MCS 10800; PG-18-4, SD 12)
	1	CC	DISPENSER, TOILET TISSUE, DOUBLE ROLL (PG-18-1, MCS 10800; PG-18-4, SD 12)
	2	CC	NURSE CALL, EMERGENCY STATION WITH CORRIDOR SIGNAL LIGHT CONNECTED TO NEAREST NURSE CONTROL STATION (PG-18-1, MCS 16761)
P-103	1	CC	WATER CLOSET, WALL HUNG (PG-18-1, MCS 15450; PG-18-1, MCS 15450; PG-18-4)
	1	VV	DISPENSER, SOAP, LIQUID, WALL HUNG
	1	VV	DISPENSER, PAPER TOWEL, SURFACE MOUNTED
	1	VV	RECEPTACLE, WASTE, STEP ON TYPE, APPROXIMATELY 305 mm (12") DIAMETER

Orthopedic Clinic/Cast Room Equipment & Utility Plan

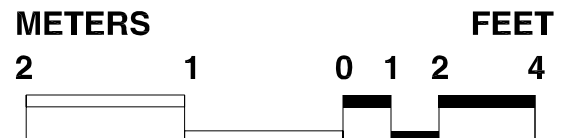
FINAL DRAFT 10-31-95
Revised 1/97



- NOTE:
1. ALL ELEMENTS TYPICAL AS NOTED
 2. QUANTITY OF PATIENT CUBICLES WILL VARY BY PROJECT
 3. ALLOW 100 NSF/9.3 NSM MINIMUM PER CUBICLE
 4. DRESSING CUBICLES ADJACENT (2)

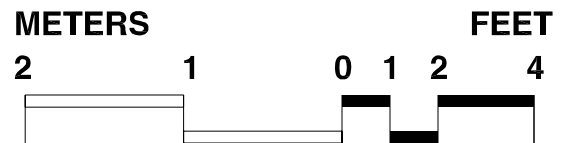
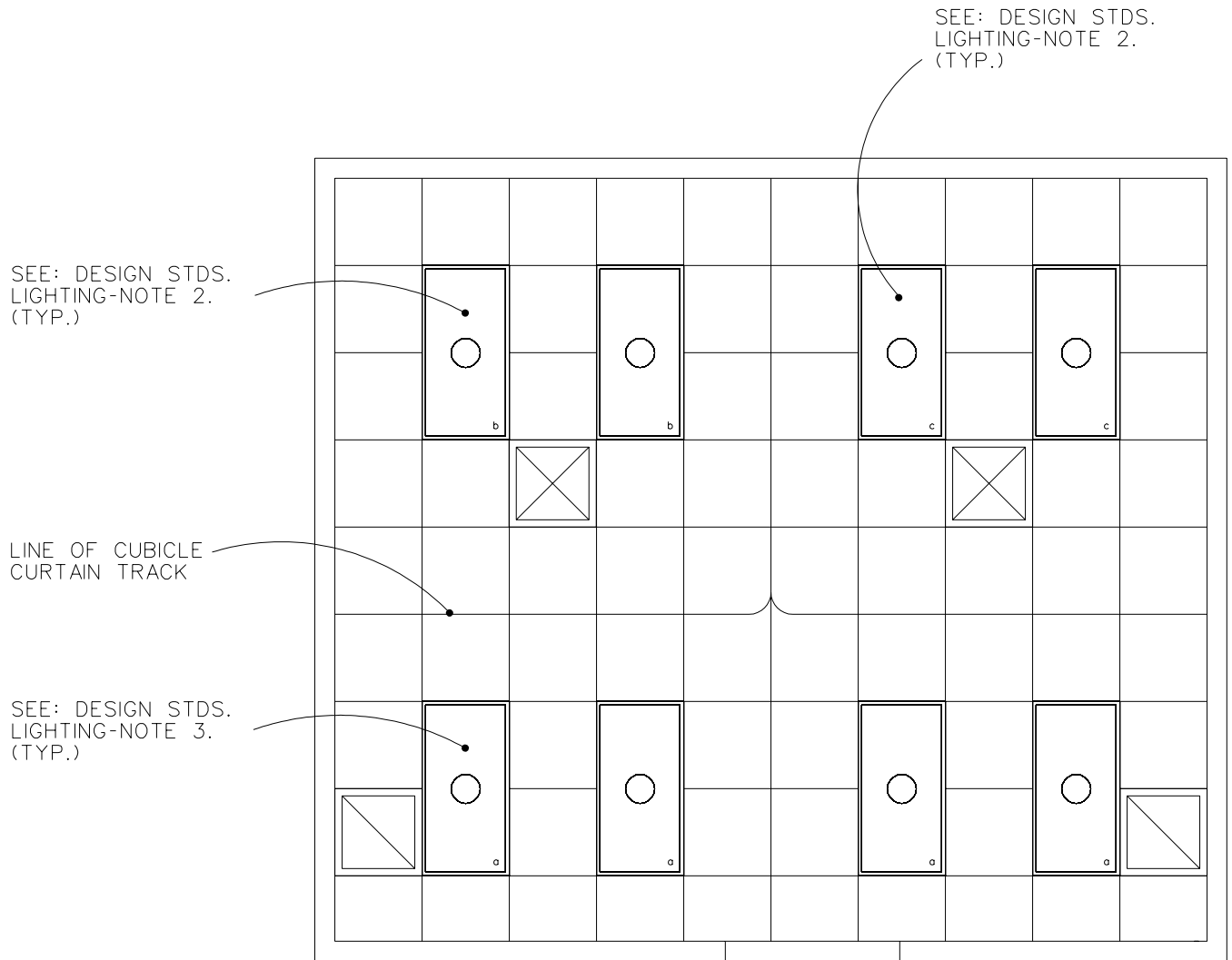
ASSUMPTION:
3,001 TO 6,000 CLINIC STOPS
=350 NSF

32.5 NSM
350 NSF



Orthopedic Clinic/Cast Room Reflected Ceiling Plan

FINAL DRAFT 10-31-95
Revised 1/97



Design Standards

Orthopedic Clinic/Cast Room

ARCHITECTURAL

Ceiling:	Acoustic lay-in ceiling tile
Ceiling Ht:	2700 mm (9'-0")
Wall Finish:	Veneer plaster, paint
Wainscot:	--
Base:	Resilient sheet flooring integral base
Floor Finish:	Resilient sheet flooring
Slab Depr:	--
Notes:	1. 1200 mm (4'-0") wide door.

SPECIAL EQUIPMENT

None

LIGHTING

General:	Cubicle: 100 FC Work Area: 50 FC
Special:	--
Notes:	<ol style="list-style-type: none"> Local switching by area/cubicle. 600 mm x 1200 mm (2'x4') recessed fluorescent light fixture, acrylic prismatic lens, W/4-F32T8 lamps, 3500°K, CRI=75 (minimum). 600 mm x 1200 mm (2'x4') recessed fluorescent light fixture, acrylic prismatic lens, W/2-F32T8 lamps, 3500°K, CRI=75 (minimum).

POWER

General:	1400W (receptacles)
Emergency:	--
Notes:	

COMMUNICATION

ADP:	--
Radio:	--
Telephone:	Yes
Intercom:	--
Pub. Addr:	--
Notes:	

HEATING, VENTILATING AND AIR CONDITIONING

Dry Bulb Temp Cooling:	25°C (78°F)
Dry Bulb Temp Heating:	22°C (72°F)
Minimum % Outside Air:	--
100% Exhaust Air:	Yes
Noise Criteria:	NC-40
Steam:	--
Relative Humidity/Cooling:	50%
Relative Humidity/Heating:	30%
Minimum Air Changes/Hr.:	10
Room Pressure	Negative
AC Load Lighting:	26 W/m ² (2.4 W/sf)
AC Load-Equipment:	54 W/m ² (5 W/sf)
Number of People:	4
Special Exhaust:	Yes
Notes:	

PLUMBING AND MEDICAL GASES

Cold Water:	Yes
Hot Water:	Yes
Laboratory Air:	--
Laboratory Vacuum:	--
Sanitary Drain:	Yes
Reagent Grade Water:	--
Medical Air:	Yes
Medical Vacuum:	Yes
Oxygen:	--
Notes:	

Equipment Guide List

Orthopedic Clinic/Cast Room

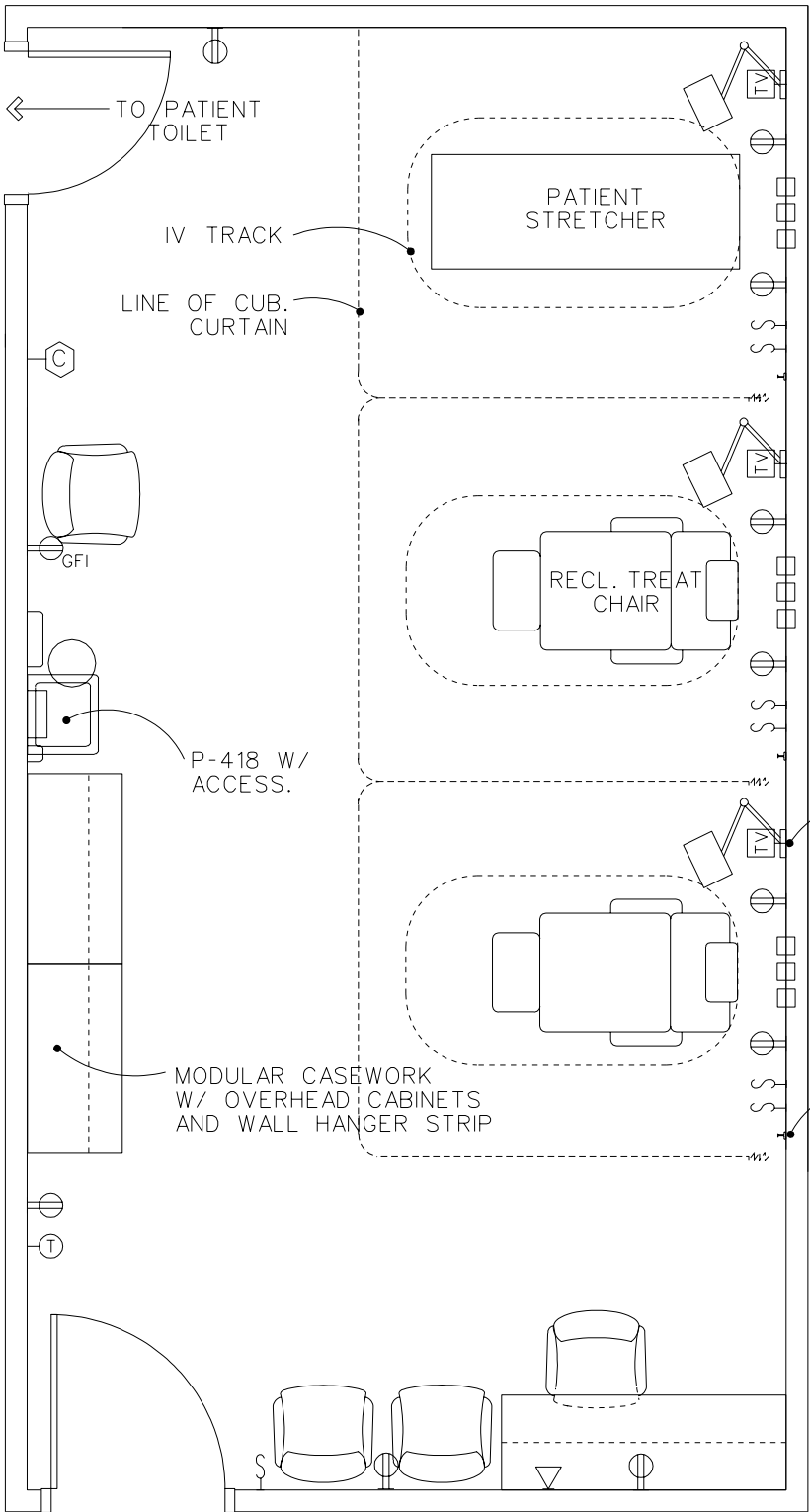
SYMBOL	QTY	AI	DESCRIPTION
T1A	1	CC	CABINET, BASE WITH 2 DRAWERS, 2 HINGED DOORS AND 1 ADJUSTABLE SHELF, 910 mm W x 555 mm D x 910 mm H (36"W X 22"D X 36"H), CORROSION RESISTING STEEL TOP AND SPLASHBACKS, WITH WALL CABINET ABOVE WITH SLOPING TOP, 2 GLAZED SLIDING DOORS AND 2 ADJUSTABLE GLASS SHELVES (PG-18-1, MCS 12301; PG-18-6, 12301-5, 5A)
P-418	1	CC	LAVATORY, SENSOR CONTROL (PG-18-1, MCS 15450; VOL. 3 SD 380)
	1	CC	PEGBOARD, PERFORATED, HEAVY DUTY, WITH HANGERS, 1220 mm x 2440 mm (48" X 96") (PG-18-1, 06200)
MCS T45	1	CC	SHELF, CORROSION RESISTING STEEL, 305 mm W x 125 mm D (12"W X 5"D) (PG-18-1, MCS 10360)
P-507	1	CC	SINK, PLASTER, SINGLE COMPARTMENT, CRS DRAINBOARD WITHOUT CORRUGATIONS (PG-18-1, 15450; PG-18-4, SD 4.1)
MCS	1	VV	BULLETIN BOARD, 1220 mm W x 91 mm H (48"W X 36"H)
	1	VV	CABINET, INSTRUMENT AND DRESSING, 760 mm W x 405 mm D x 1520 mm H (30"W x 16"D x 60"H)
	1	VV	CLOCK, BATTERY OPERATED
	1	VV	DISPENSER, BIFOLD PAPER TOWEL, SURFACE MOUNTED.
	1	VV	DISPENSER, SOAP, LIQUID, WALL MOUNTED
	2	VV	HOOK, COAT, WALL MOUNTED
AR	VV	VV	ILLUMINATOR, X-RAY FILM, 120 VOLTS, 150 WATTS, WALL MOUNTED, INDIVIDUAL SWITCH FOR TWO, 255 mm x 455 mm (14" X 17") RADIOGRAPHS, 790 mm W x 500 mm H (31"W X 20"H)
AR	VV	VV	LIGHT, EXAMINING, PORTABLE, 120 VOLTS, 20 AMPS, APPROX., 455 mm DIAMETER x 1900 mm H (18" DIAMETER X 75"H)
	1	VV	RECEPTACLE, WASTE, STEP ON TYPE, APPROX., 305 mm (12") DIAMETER

Equipment Guide List Orthopedic Clinic/Cast Room

SYMBOL	QTY	AI	DESCRIPTION
AR	VV		SHELVING, FLOORSTANDING, STEEL, 4 OR 5 ADJUSTABLE SHELVES, 910 mm W x 455 mm D x 2130 mm H (36"W X 18"D X 84"H)
1	VV		STOOL, EXAMINING, ADJUSTABLE
1	VV		TABLE, ORTHOPEDIC, PORTABLE PLASTER TABLE, HYDRAULIC BASE
1	VV		TABLE, WORK, CORROSION RESISTING STEEL TOP, METAL FRAME, 1 DRAWER AND 1 SHELF, 1520 mm W x 760 mm D x 860 mm H (60"W X 30"D X 34"H)

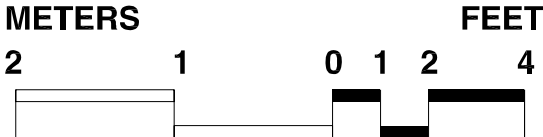
Chemotherapy Treatment Room Equipment & Utility Plan

FINAL DRAFT 10-31-95
Revised 1/97



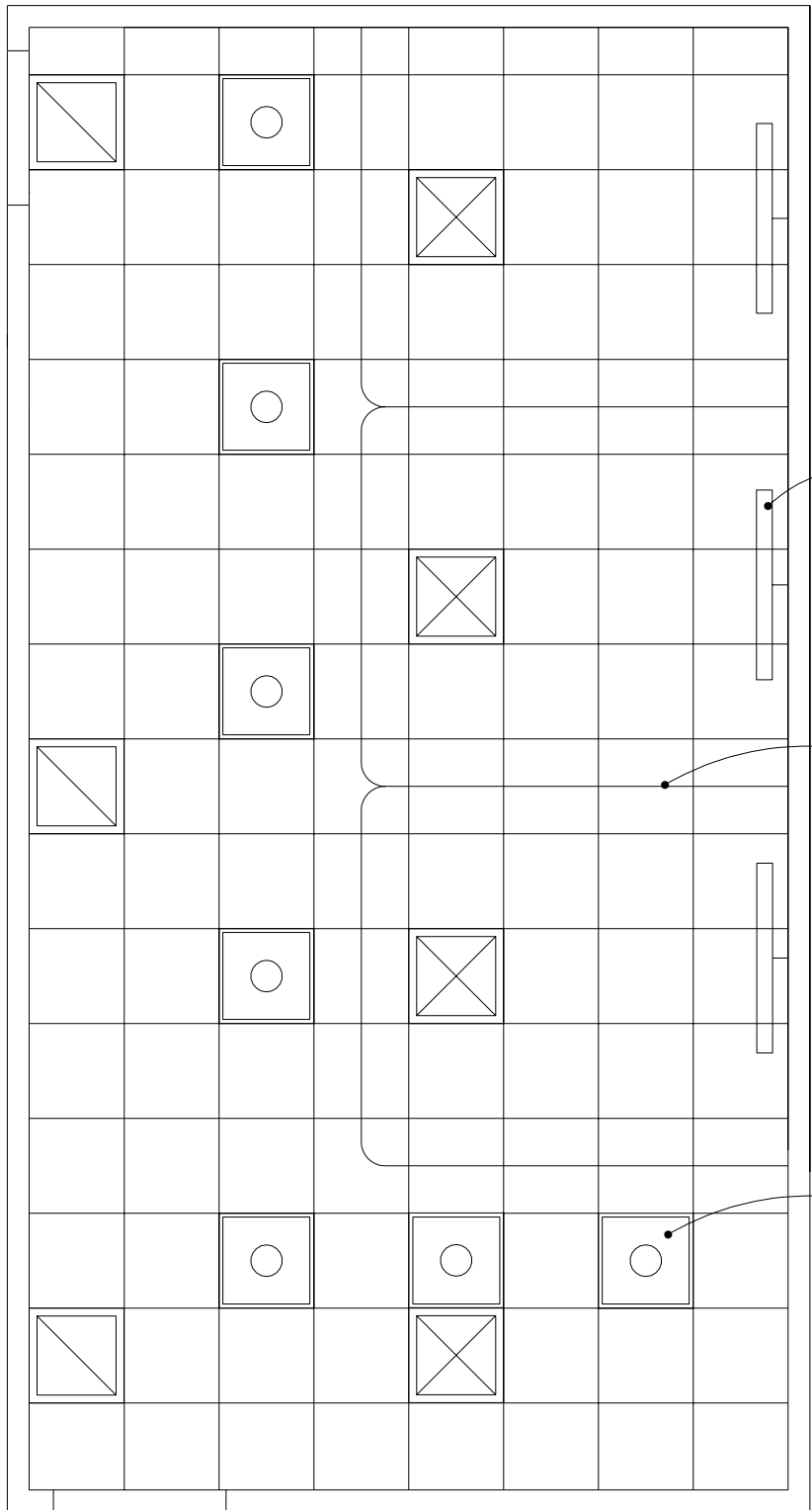
- NOTE:
1. ALL ELEMENTS TYPICAL AS NOTED
 2. QUANTITY OF PATIENT CUBICLES WILL VARY BY PROJECT
 3. ALLOW 70 NSF/6.5 NSM PER CUBICLE

45.8 NSM
493 NSF



Chemotherapy Treatment Room Reflected Ceiling Plan

FINAL DRAFT 10-31-95
Revised 1/97



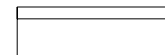
SEE: DESIGN STDS.
LIGHTING-NOTE 3. (TYP.)

LINE OF CUBICLE
CURTAIN TRACK

SEE: DESIGN STDS.
LIGHTING-NOTE 2. (TYP.)

METERS

2 1



FEET

0 1 2 4



Design Standards

Chemotherapy Treatment Room

ARCHITECTURAL

Ceiling:	Acoustic lay-in ceiling tile with washable finish
Ceiling Ht:	2700 mm (9'-0")
Wall Finish:	Veneer plaster, paint
Wainscot:	--
Base:	Resilient sheet flooring integral base
Floor Finish:	Resilient sheet flooring
Slab Depr:	--
Notes:	1. 1220 mm (3'-8") wide door.

SPECIAL EQUIPMENT

None

LIGHTING

General:	30 FC
Special:	---
Notes:	<ol style="list-style-type: none"> 1. Cubicles have individual switches for separate control of up/down lights. 2. 600 mm x 600 mm (2'x2') recessed fluorescent light fixture, acrylic prismatic lens, W/2-FB31 lamps, 3500°K, CRI=75 (minimum). 3. Wall-mounted fluorescent direct/indirect fixture, acrylic prismatic lens, W/4-F32T8 lamps, 2-up and 2-down, separately ballasted.

POWER

General:	1000W (receptacles)
Emergency:	--
Notes:	

COMMUNICATION

ADP:	--
Radio:	--
Telephone:	--
Intercom:	--
Pub. Addr:	--
Notes:	

HEATING, VENTILATING AND AIR CONDITIONING

Dry Bulb Temp Cooling:	24°C (76°F)
Dry Bulb Temp Heating:	25°C (78°F)
Minimum % Outside Air:	--
100% Exhaust Air:	Yes
Noise Criteria:	NC-35
Steam:	--
Relative Humidity/Cooling:	50%
Relative Humidity/Heating:	30%
Minimum Air Changes/Hr.:	8
Room Pressure:	Negative
AC Load Lighting:	16 W/m ² (1.5 W/sf)
AC Load-Equipment:	65 W/m ² (6 W/sf)
Number of People:	10
Special Exhaust:	Yes
Notes:	Provide capability to maintain 29°C (85° F) year round.

PLUMBING AND MEDICAL GASES

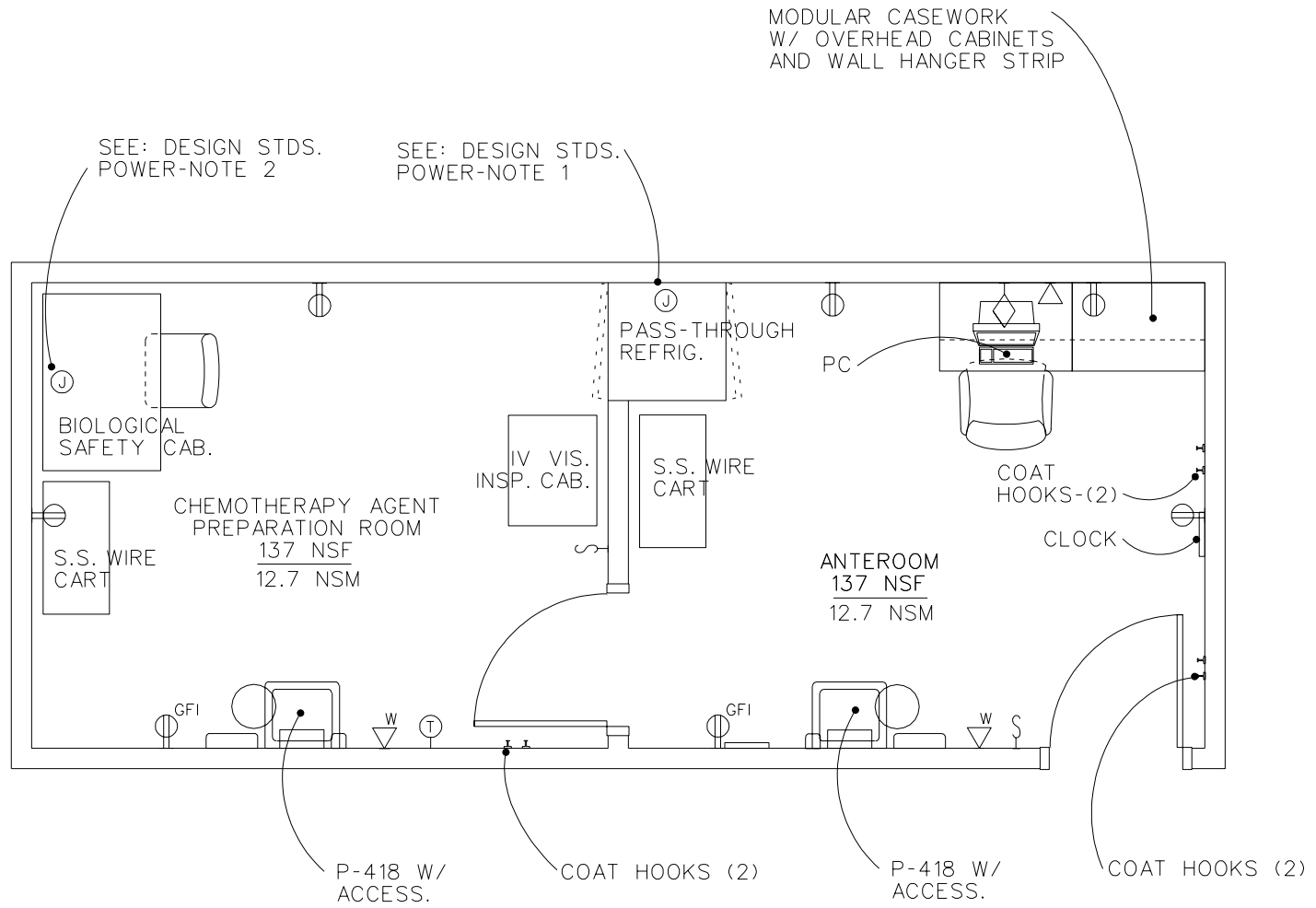
Cold Water:	Yes
Hot Water:	Yes
Laboratory Air:	--
Laboratory Vacuum:	--
Sanitary Drain:	Yes
Reagent Grade Water:	--
Medical Air:	Yes
Medical Vacuum:	Yes
Oxygen:	Yes
Notes:	

Equipment Guide List

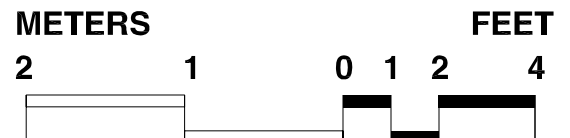
Chemotherapy Treatment Room

SYMBOL	QTY	AI	DESCRIPTION
	AR	CC	BRACKET, MOUNTING, TELEVISION RECEIVER (PG-18-1, MCS 16781)
P-418	1	CC	LAVATORY, SENSOR CONTROL (PG-18-1, MCS 15450; VOL. 3 SD 380)
T45	1	CC	SHELF, CORROSION RESISTING STEEL, 305 mm W x 125 D (12"W X 5"D) (H-08-1, MCS 103 60; H-08-4,SD 60H)
	AR	CC	TRACK, CURTAIN, CUBICLE, CEILING TYPE, SURFACE MOUNTED (PG-18-1, MCS 10152)
	AR	CC	TRACK, INTRAVENOUS, CEILING MOUNTED, CONTINUOUS LOOP TRACK AND VERTICAL ADJUSTMENT (ONE FOR EACH RECLINING CHAIR OR STRETCHER)
	AR	CF	MODULAR CASEWORK, W/ OVERHEAD CABINETS AND WALL HANGER STRIPS
	AR	VV	CHAIR, RECLINING, UPHOLSTERED, 910 mm x 960 mm - 1830 mm (36" X 38"-72") (EXTENDED)
	1	VV	CLOCK, BATTERY OPERATED
	1	VV	DISPENSER, PAPER TOWEL, SURFACE MOUNTED.
	1	VV	DISPENSER, SOAP, LIQUID, WALL MOUNTED
	AR	VV	HOOK, COAT, WALL MOUNTED
	1	VV	RECEPTACLE, WASTE, STEP ON TYPE, APPROX., 305 mm (12") DIAMETER
	AR	VV	STRETCHER, TREATMENT
	AR	VV	TELEVISION, COLOR, 230 mm (9")
	AR	VV	CHAIR, STRAIGHT, WITH ARMS

Chemotherapy Agent Preparation Rm FINAL DRAFT 10-31-95 Equipment & Utility Plan Revised 1/97

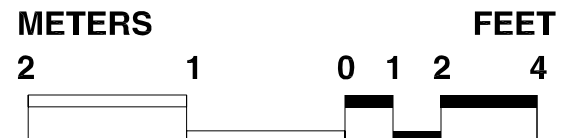
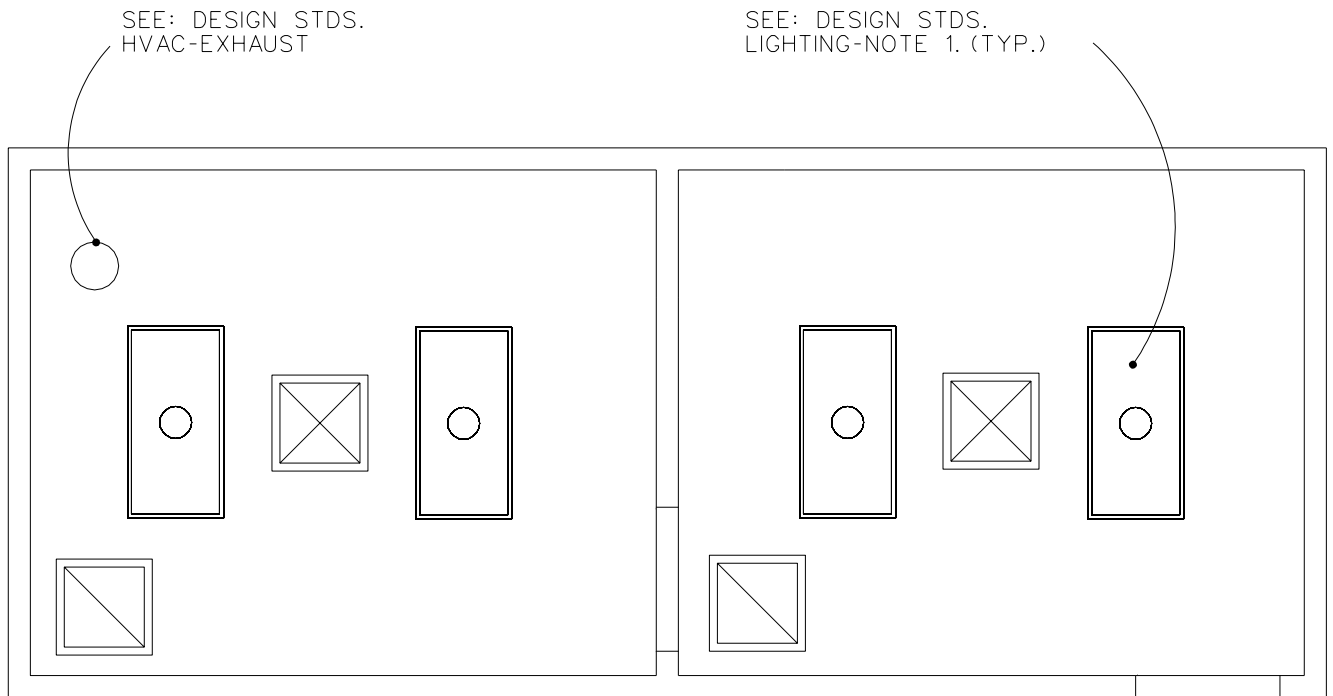


25.4 NSM
274 NSF



Chemotherapy Agent Preparation Rm Reflected Ceiling Plan

FINAL DRAFT 10-31-95
Revised 1/97



Design Standards

Chemotherapy Agent Preparation Room

ARCHITECTURAL

Ceiling:	Veneer plaster, paint
Ceiling Ht:	2700 mm (9'-0")
Wall Finish:	Veneer plaster, paint
Wainscot:	--
Base:	Resilient sheet flooring integral base
Floor Finish:	Resilient sheet flooring
Slab Depr:	--
Notes:	1. 900 mm (3'-0") wide door.

SPECIAL EQUIPMENT

None

LIGHTING

General:	50 FC
Special:	--
Notes:	1. 600 mm x 1200 mm (2'x4') recessed fluorescent light fixture, acrylic prismatic lens, W/3-F32T8 lamps, 4100°K, CRI=85 (minimum).

POWER

General:	800W (receptacles)
Emergency:	--
Notes:	1. Junction box for 120V critical power connection to refrigerator. 2. Junction box for 120V power connection to biological safety cabinet.

COMMUNICATION

ADP:	--
Radio:	--
Telephone:	Yes
Intercom:	--
Pub. Addr:	--
Notes:	

HEATING, VENTILATING AND AIR CONDITIONING

Dry Bulb Temp Cooling:	25°C (78°F)
Dry Bulb Temp Heating:	22°C (72°F)
Minimum % Outside Air:	--
100% Exhaust Air:	Yes
Noise Criteria:	NC-40
Steam:	--
Relative Humidity/Cooling:	60%
Relative Humidity/Heating:	30%
Minimum Air Changes/Hr.:	12

Room Pressure: Prep area is Positive
Ante is Negative with respect to adjacent areas.

AC Load Lighting:	16 W/m ² (1.5 W/sf)
AC Load-Equipment:	54 W/m ² (5 W/sf)
Number of People:	6
Special Exhaust:	Biological safety cabinet exhaust. See HVAC Design Manual for Hospital Projects.

Notes:

PLUMBING AND MEDICAL GASES

Cold Water:	Yes
Hot Water:	Yes
Laboratory Air:	Yes
Laboratory Vacuum:	Yes
Sanitary Drain:	Chemical-resist. type.
Reagent Grade Water:	--
Medical Air:	--
Medical Vacuum:	--
Oxygen:	--

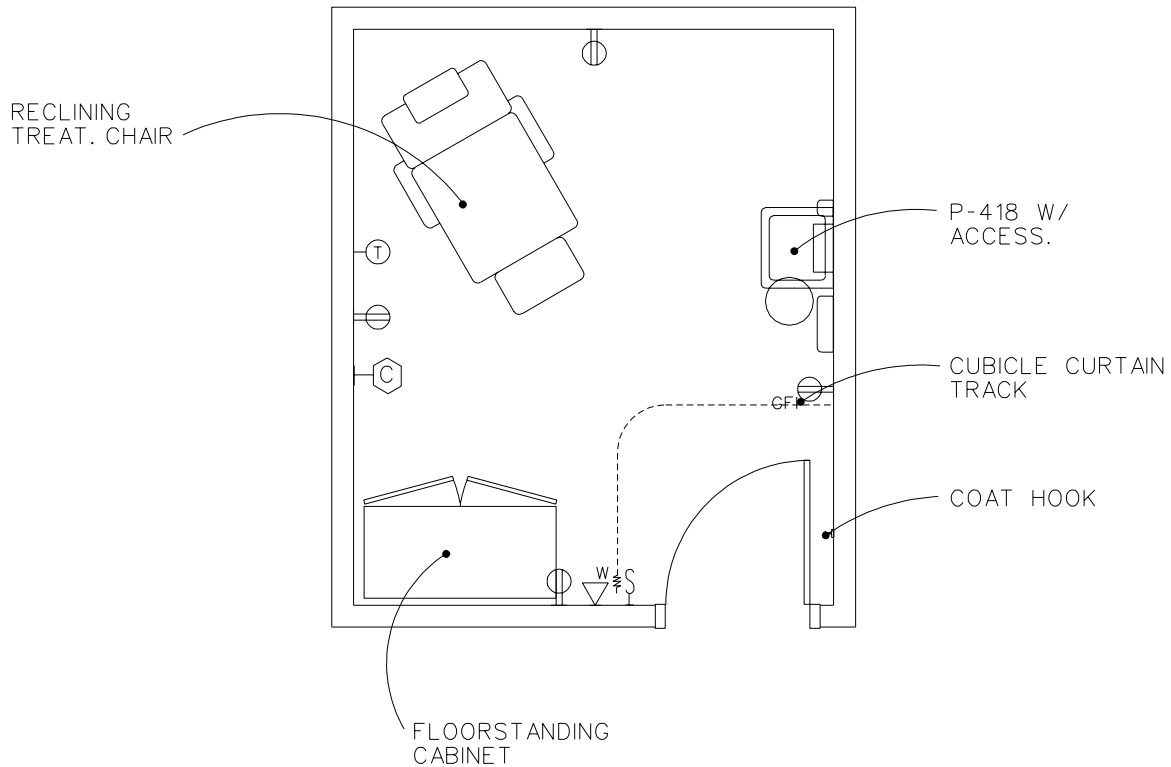
Notes: 1. Provide one natural gas outlet.
2. All outlets need to be on the left side of the biological safety cabinet.

Equipment Guide List

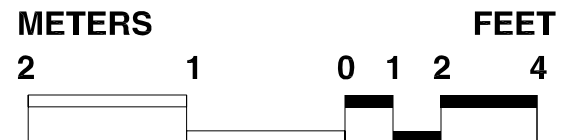
Chemotherapy Agent Preparation Room

SYMBOL	QTY	AI	DESCRIPTION
P-418	2	CC	LAVATORY, SENSOR CONTROL PG-18-1, MCS 15450; VOL. 3 SD 380)
	1	CC	BIOLOGICAL SAFETY CABINET H12B2-72 (LAMINAR FLOW), CLASS II; TYPE B-2, 100% DIRECT EXHAUSTED AIR THROUGH THE WORK-SPACE. 1200 mm x 815 mm x 1980 mm (48"W X 38"D X 72"H)
AR		CF	MODULAR CASEWORK, W/ OVERHEAD CABINETS AND WALL HANGER STRIP
	1	CF	REFRIGERATOR, BIOLOGICAL, PASS-THRU, W/ HINGED GLASS DOORS, 760 mm W x 840 mm D x 2060 mm H (30"W X 33"D X 81"H)
	1	VV	CABINET, INTRAVENOUS (IV), VISUAL CLARITY INSPECTION, 760 mm W x 610 mm D (30"W X 24"D), 120 VOLTS 20 AMPS
AR		VV	CART, EXCHANGE, CRS WIRE
	2	VV	CHAIR, ROTARY, WITH ARMS
	1	VV	CLOCK, BATTERY OPERATED
AR		VV	CRT, COMPUTER SYSTEM, W/ KEYBOARD
	2	VV	DISPENSER, BIFOLD PAPER TOWEL, SURFACE MOUNTED
	2	VV	DISPENSER, SOAP, LIQUID, WALL MOUNTED
AR		VV	RECEPTACLE, WASTE, STEP-ON TYPE, APPROX., 300 mm (12") DIAMETER
AR		VV	HOOK, COAT, WALL MOUNTED

Aerosolized Pentamidine Procedure Rm Equipment & Utility Plan



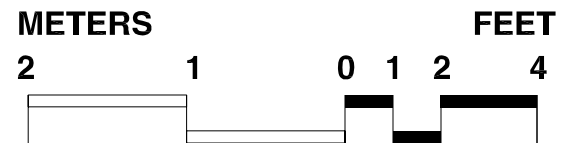
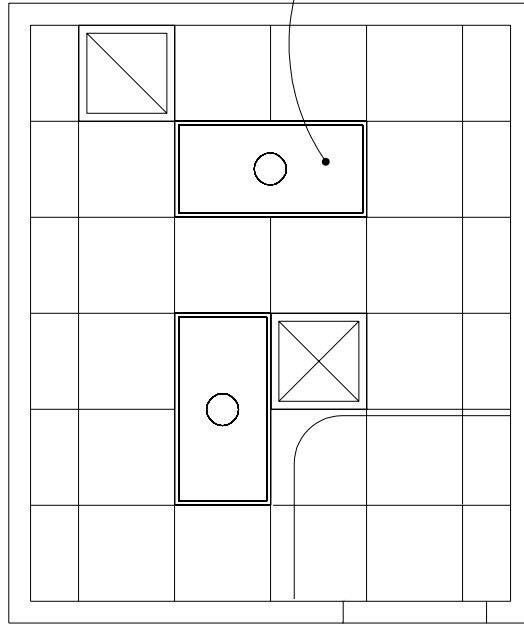
11.15 NSM
120 NSF



Aerosolized Pentamidine Procedure Rm Reflected Ceiling Plan

FINAL DRAFT 10-31-95
Revised 1/97

SEE: DESIGN STDS.
LIGHTING-NOTE 1. (TYP.)



Design Standards

Aerosolized Pentamidine Procedure Room

ARCHITECTURAL

Ceiling: Gypsum wallboard lay-in panels
 Ceiling Ht: 2700 mm (9'-0")
 Wall Finish: Paint.
 Wainscot: --
 Base: Resilient base
 Floor Finish: Vinyl composition tile
 Slab Depr: --
 Notes: 1. Provide STC 40 partitions and door.
 2. 900 mm (3'-0") wide door.

SPECIAL EQUIPMENT

None

LIGHTING

General: 50 FC
 Special: --
 Notes: 1. 600 mm x 1200 mm (2'x4') recessed fluorescent light fixture, acrylic prismatic lens, W/2-F32T8 lamps, 3500°K, CRI=75 (minimum).

POWER

General: 1000W (receptacles)
 Emergency: --
 Notes:

COMMUNICATION

ADP: --
 Radio: --
 Telephone: Yes
 Intercom: --
 Pub. Addr: --
 Notes:

HEATING, VENTILATING AND AIR CONDITIONING

Dry Bulb Temp Cooling: 24°C (76°F)
 Dry Bulb Temp Heating: 25°C (78°F)
 Minimum % Outside Air: --
 100% Exhaust Air: Yes
 Noise Criteria: NC-35
 Steam: --
 Relative Humidity/Cooling: 50%
 Relative Humidity/Heating: 30%
 Minimum Air Changes/Hr.: 10
 Room Pressure: Negative
 AC Load Lighting: 13 W/m² (1.2 W/sf)
 AC Load-Equipment: 32 W/m² (3 W/sf)
 Number of People: Provide 3
 Special Exhaust: Dedicated exhaust.
 Notes:

PLUMBING AND MEDICAL GASES

Cold Water: Yes
 Hot Water: Yes
 Laboratory Air: --
 Laboratory Vacuum: --
 Sanitary Drain: Yes
 Reagent Grade Water: --
 Medical Air: Yes
 Medical Vacuum: --
 Oxygen: --
 Notes:

Equipment Guide List Aerosolized Petamidine Treatment Room

SYMBOL	QTY	AI	DESCRIPTION
P-418	1	CC	LAVATORY, SENSOR CONTROL (PG-18-1, MCS 15450; VOL. 3 SD 380)
T45	1	CC	SHELF, CORROSION RESISTING STEEL, 305 mm W x 125 mm D (12"W X 5"D) (PG-18-1, MCS 10360; PG-18-4, SD 60H)
	1	VV	CABINET, FLOORSTANDING, STEEL, 2 DOOR, WITH 5 ADJUSTABLE SHELVES, 1220 mm W x 600 mm D x 910 mm H (48"W X 24"D X 36"H)
	1	VV	CHAIR, RECLINING, UPHOLSTERED, 36" X 38" X 72" (EXTENDED)
	1	VV	CLOCK, BATTERY OPERATED
	1	VV	DISPENSER, PAPER TOWEL, SURFACE MOUNTED.
	1	VV	DISPENSER, SOAP, LIQUID, WALL MOUNTED
	1	VV	HOOK, COAT, WALL MOUNTED