

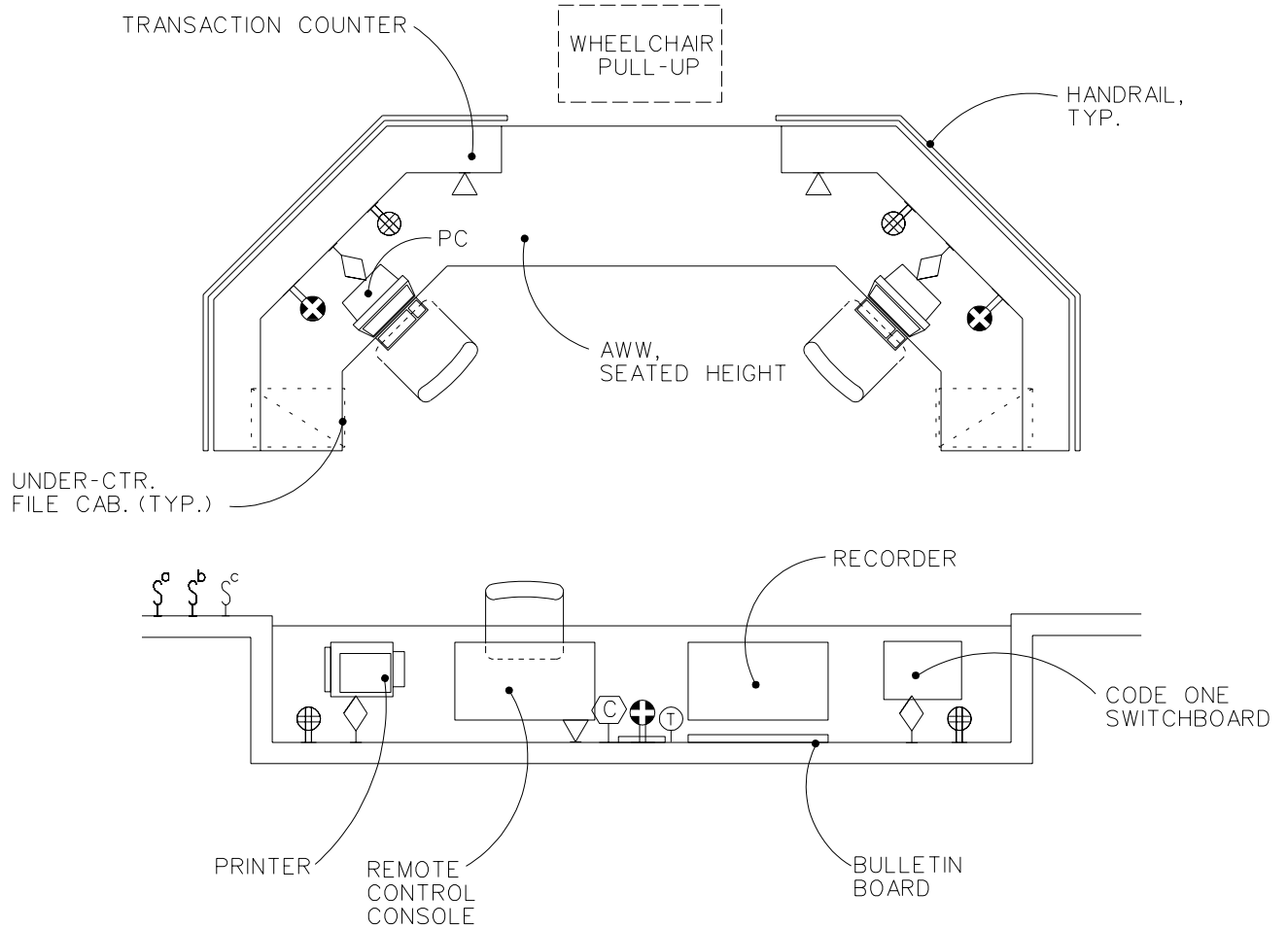
Section 5

Design Guide Plates and Data Sheets: Emergency Care (ER)

Guide Plate Series	Plate Number
Nurse/Communication Station	
Equipment & Utility Plan	5-1
Reflected Ceiling Plan	5-1
Design Standards	5-1
Equipment Guide List	5-1
Life Support Unit	
Equipment & Utility Plan	5-2
Reflected Ceiling Plan	5-2
Design Standards	5-2
Equipment Guide List	5-2
Observation and Treatment Room	
Equipment & Utility Plan	5-3
Reflected Ceiling Plan	5-3
Design Standards	5-3
Equipment Guide List	5-3
Toilet/Bath Wheelchair	
Equipment & Utility Plan	5-4
Reflected Ceiling Plan	5-4
Design Standards	5-4
Equipment Guide List	5-4

Nurse/Communication Station Equipment & Utility Plan

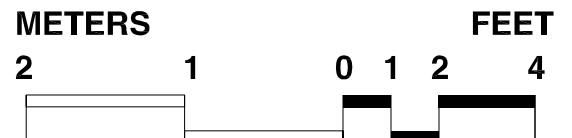
FINAL DRAFT 10-31-95
Revised 1/97



NOTE:
EMERGENCY COMMUNICATION
COMPONENTS WILL VARY ON A
PROJECT BASIS

TRANSACTION AREA MUST COMPLY
WITH PREVAILING BARRIER-FREE
REQUIREMENTS

18.6 NSM
200 NSF

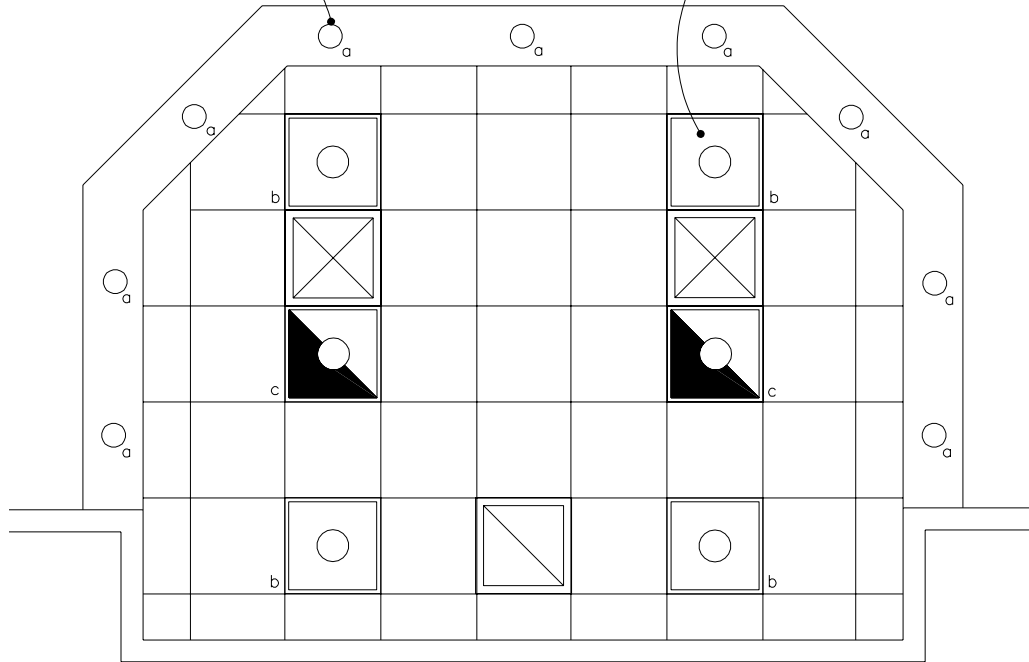


Nurse/Communication Station Reflected Ceiling Plan

FINAL DRAFT 10-31-95
Revised 1/97

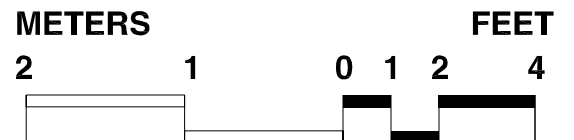
SEE: DESIGN STDS.
LIGHTING-NOTE 2. (TYP.)

SEE: DESIGN STDS.
LIGHTING-NOTE 1. (TYP.)



NOTE:
EMERGENCY COMMUNICATION
COMPONENTS WILL VARY ON A
PROJECT BASIS

TRANSACTION AREA MUST COMPLY
WITH PREVAILING BARRIER-FREE
REQUIREMENTS



Design Standards

Nurse/Communication Station

ARCHITECTURAL

Ceiling:	Acoustic lay-in ceiling tile
Ceiling Ht:	2700 mm (9'-0")
Wall Finish:	Paint & wallcovering on gypsum wallboard. Tackboard Wall Surface)
Wainscot:	--
Base:	Resilient base
Floor Finish:	Carpet
Slab Depr:	--
Notes:	

SPECIAL EQUIPMENT

None

LIGHTING

General:	50 FC Special:
Notes:	<ol style="list-style-type: none"> 600 mm x 600 mm (2'x2') recessed fluorescent light fixture, 9-cell parabolic reflector, with 3-FB31 lamps, 3500°K, CRI=75 (Minimum) Recessed fluorescent downlight with 2-13 watt compact fluorescent lamps. Switching is by separate zones for downlights, normal and critical 600 mm x 600 mm (2'x2') lights.

POWER

General:	1200W (receptacles)
Emergency:	1600W (receptacles)
Notes:	

COMMUNICATION

ADP:	Yes
Radio:	Yes
Telephone:	Yes
Intercom:	--
Pub. Addr:	--
Notes:	1.Nurse Call/Code One/EMS recorder.

HEATING, VENTILATING AND AIR CONDITIONING

Dry Bulb Temp Cooling:	25°C (78°F)
Dry Bulb Temp Heating:	22°C (72°F)
Minimum % Outside Air:	15
100% Exhaust Air:	--
Noise Criteria:	NC-40
Steam:	--
Relative Humidity/Cooling:	50%
Relative Humidity/Heating:	30%
Minimum Air Changes/Hr.:	6
Room Pressure:	0
AC Load Lighting:	31 W/m ² (2.85 W/sf)
AC Load-Equipment:	86 W/m ² (8W/sf)
Number of People:	5
Special Exhaust:	--
Notes:	

PLUMBING AND MEDICAL GASES

Cold Water:	--
Hot Water:	--
Laboratory Air:	--
Laboratory Vacuum:	--
Sanitary Drain:	--
Reagent Grade Water:	--
Medical Air:	--
Medical Vacuum:	--
Oxygen:	--
Notes:	<ol style="list-style-type: none"> Recommended location for medical gases zone valve box and local alarm panel.

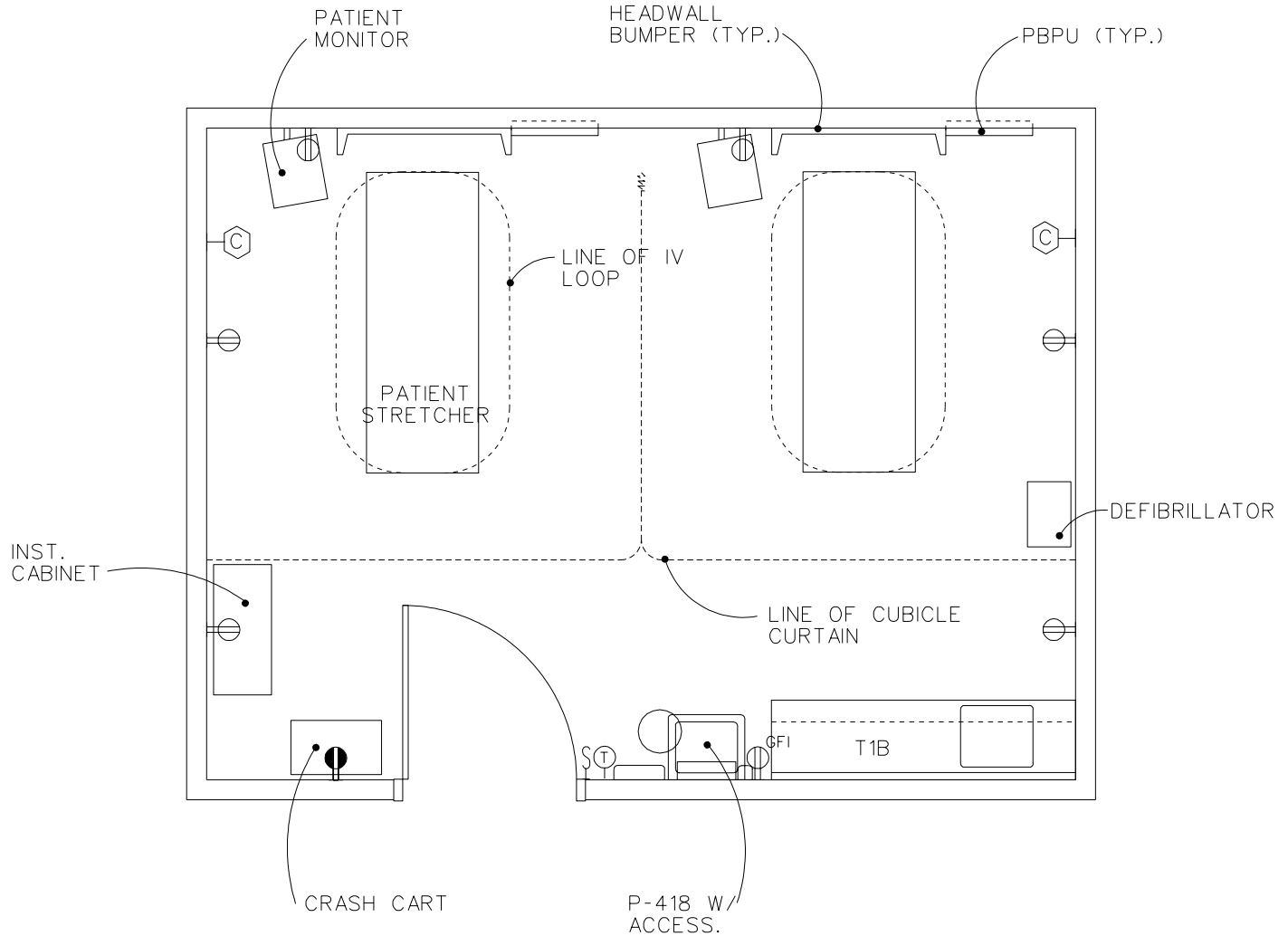
Equipment Guide List

Nurse/Communication Station

SYMBOL	QTY	AI	DESCRIPTION
	1	CC	COUNTER, BETWEEN RECEPTIONIST'S OFFICE AND WAITING AREA, DRAWERS AND CABINETS UNDERNEATH ON OFFICE SIDE (PG-18-1, MCS 12302)
AR	VV		DESK, DOUBLE PEDESTAL, APPROX. 1524 mm x 762 mm x 749 mm (60" x 30" x 29-1/2")
AR	VV		DESK, RIGHT OR LRFT, SINGLE PEDESTAL, 1524 mm x 762 mm x 749 mm (60" x 30" x 29-1/2"), L UNIT ATTACHMENT AT TYPEWRITER HEIGHT, 1016 mm x 457 mm x 660 mm (40" x 18" x 26")
AR	VV		CHAIR, ROTARY, WITH ARMS
AR	VV		CHAIR, ROTARY, WITHOUT ARMS
	1	VV	HOOK, COAT, WALL MOUNTED
AR	VV		CABINET, STORAGE, METAL, 2 DOORS WITH LOCK, 1219 mm x 457 mm x 1981 mm (48" x 18" x 78")
	1	VV	PC, COMPUTER SYSTEM, WITH KEYBOARD
	1	VV	PRINTER, COMPUTER SYSTEM
	1	CC	RECEPTACLE, ELECTRICAL, QUADRAPLEX, FOR COMPUTER EQUIPMENT ITEMS (PG-18-1, MCS 16140; H-18-3, CS 866-1)
	1	VV	CLOCK, BATTERY OPERATED
	1	CC	RECEPTACLE, ELECTRICAL, DUPLEX, 120 VOLT, 20 AMP (PG-18-1, MCS 16140; H-08-3, CS 801-3)
	1	VV	MACHINE, EMBOSSER, 120 VOLT, 20 AMP, TYPE AND SIZE AS REQUIRED

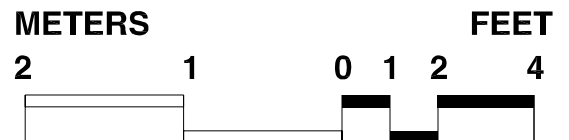
Life Support Unit Equipment & Utility Plan

FINAL DRAFT 10-31-95
Revised 1/97



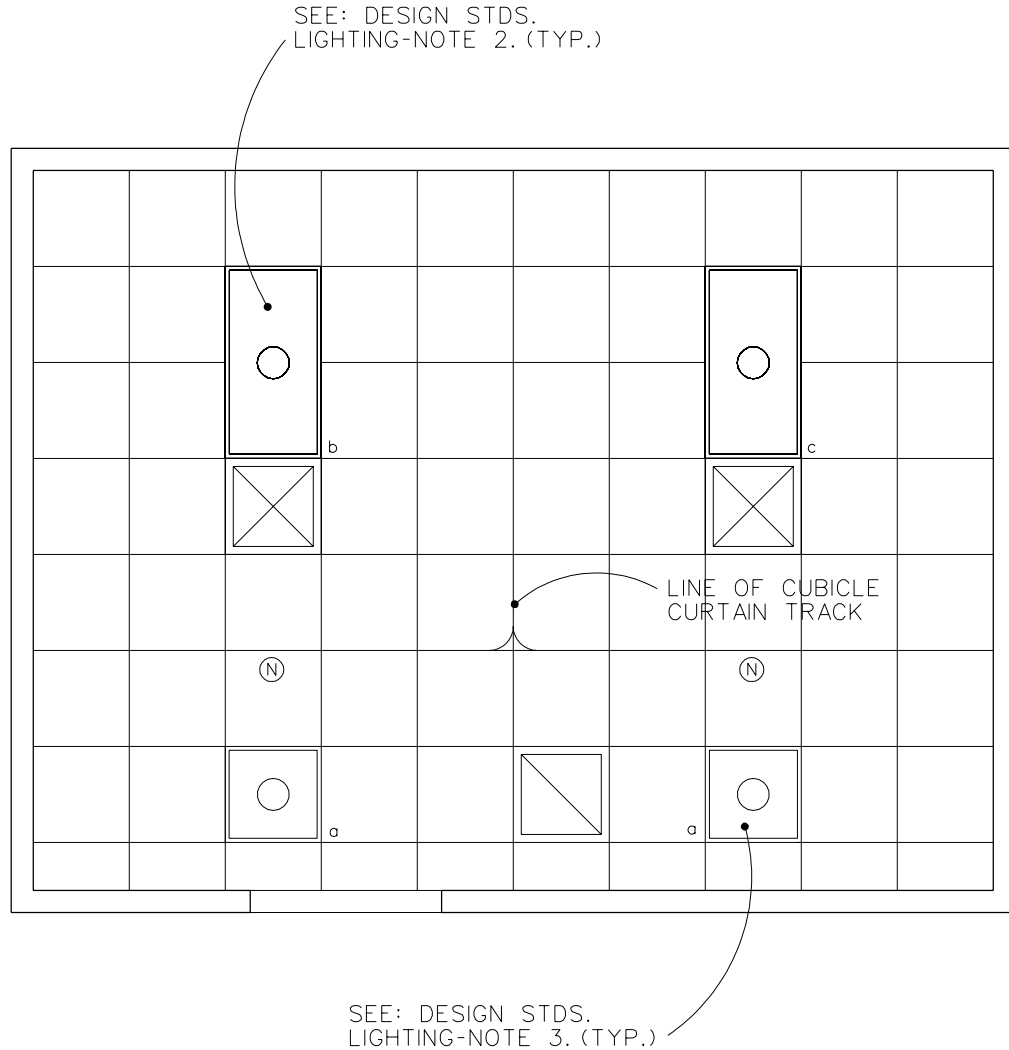
- NOTE:
1. ALL ELEMENTS TYPICAL AS NOTED
 2. QUANTITY OF PATIENT CUBICLES WILL VARY BY PROJECT
 3. ALLOW 100 NSF/9.3 NSM PER CUBICLE

27.8 NSM
300 NSF

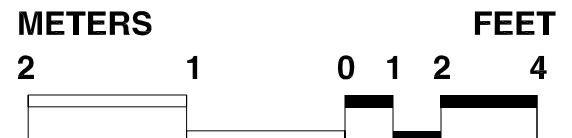


Life Support Unit Reflected Ceiling Plan

FINAL DRAFT 10-31-95
Revised 1/97



- NOTE:
1. ALL ELEMENTS TYPICAL AS NOTED
 2. QUANTITY OF PATIENT CUBICLES WILL VARY BY PROJECT
 3. ALLOW 100 NSF/9.3 NSM PER CUBICLE



Design Standards

Life Support Unit

ARCHITECTURAL

Ceiling:	Acoustic lay-in ceiling tile with washable finish
Ceiling Ht:	2700 mm (9'-0")
Wall Finish:	Veneer plaster with high-build glazed coating
Wainscot:	--
Base:	Resilient base
Floor Finish:	Vinyl composition tile
Slab Depr:	--
Notes:	1. Provide 1200 mm (4'-0") automatic door and operator with remote push-plate operation

SPECIAL EQUIPMENT

None

LIGHTING

General:	Cubicle: 50FC ambient/100 FC task
Special:	---
Notes:	<ol style="list-style-type: none"> Dual switching for cubicle lighting to provide 50/100 FC levels. Switches located on PBPU. 600 mm x 1200 mm (2'x4') recessed fluorescent light fixture, acrylic prismatic lens, W/3-F32T8 lamps, 3500°K, CRI=75 (Minimum) 600 mm x 600 mm (2'x2') recessed fluorescent light fixture, acrylic prismatic lens, W/2-FB31 lamps, 3500°K, CRI=75 (minimum)

POWER

General:	1000W (Non-PBPU receptacles)
Emergency:	500W (Crash cart receptacle)
Notes:	

COMMUNICATION

ADP:	--
Radio:	--
Telephone:	Yes
Intercom:	--
Pub. Addr:	--
Notes:	1.Nurse Call

HEATING, VENTILATING AND AIR CONDITIONING

Dry Bulb Temp Cooling:	24°C (76°F)
Dry Bulb Temp Heating:	25°C (78°F)
Minimum % Outside Air:	25
100% Exhaust Air:	--
Noise Criteria:	NC-35
Steam:	--
Relative Humidity/Cooling:	50%
Relative Humidity/Heating:	30%
Minimum Air Changes/Hr.:	4
Room Pressure:	0
AC Load Lighting:	15 W/m ² (1.4 W/sf)
AC Load-Equipment:	65 W/m ² (6W/sf)
Number of People:	6
Special Exhaust:	--
Notes:	

PLUMBING AND MEDICAL GASES

Cold Water:	Yes
Hot Water:	Yes
Laboratory Air:	--
Laboratory Vacuum:	--
Sanitary Drain:	Yes
Reagent Grade Water:	--
Medical Air:	Yes
Medical Vacuum:	Yes
Oxygen:	Yes
Notes:	

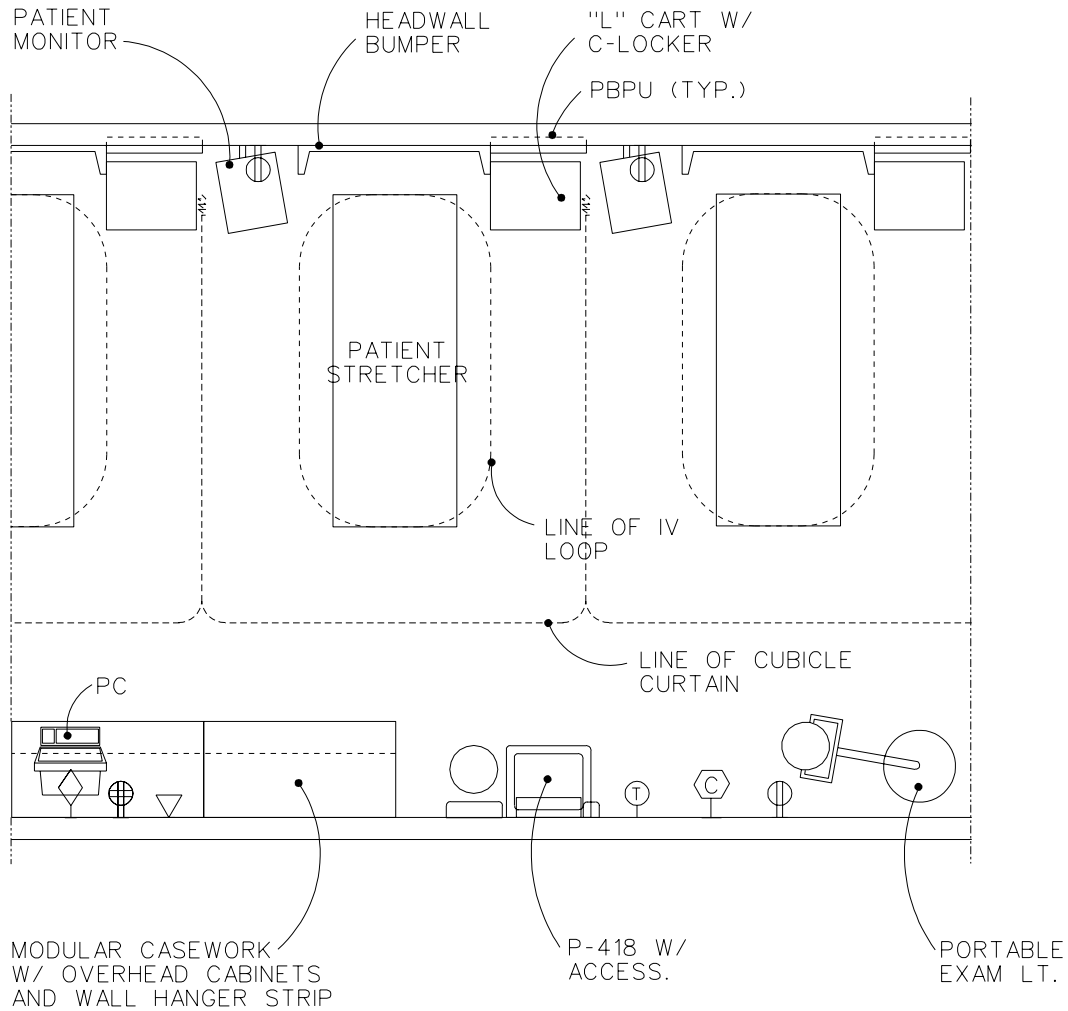
Equipment Guide List

Life Support Unit

SYMBOL	QTY	AI	DESCRIPTION
T1B	1	CC	CABINET, ASSEMBLY, WITH 2 UNDERCOUNTER UNITS TO 1 DRAWER, 1 HINGED DOOR AND 1 ADJUSTABLE SHELF, SINK CABINET TO HAVE 2 HINGED DOORS, TOTAL SIZE, 2130 mm W x 555 mm D x 910 mm H (84"W x 22"D x 36"H), WALL CABINETS TO BE SLOPING TOP, 2 GLAZED SLIDING DOORS AND 2 ADJUSTABLE SHELVES, COUNTER TOP OF CORROSION RESISTING STEEL WITH INTERGAL SPLASHBACKS AND SINK, 450 mm x 510 mm x 190 mm (18" x 20" x 7-1/2" DEEP) WITH PLASTER TRAP, REMOVEABLE STRAINER AND SWING SPOUT FAUCET(PG-18-1,MCS 12301;PG-18-4 P-418 1CC LAVATORY, SENSOR CONTROL (PG-18-1, MCS 15450 VOL. 3 SD 380)
	AR	CC	MIRROR, 400 mm W x 500 mm H (16"W x 20"H), WITH INTREGAL SHELF, OVER LAVATORY (PG-18-1, MCS 10800; PG-18-4, SD15)
	2	CC	PREFABRICATED BEDSIDE PATIENT UNIT; TYPE 3B (PG-18-1, MCS 16685; PG-18-4, SD E-P-7, 8 & 9) (1) - RECEPTACLE, ELECTRICAL, FOR READING-EXAM LIGHT, LOCATION OPTIONAL (1) - BRACKET, FOR STEM BASE READING-EXAM LIGHT (1) - BUMPER, WRAPAROUND, PROTUDING (1) - LIGHT, READING-EXAM, STEM BASE (PG-18-4; SD E-N-2)
	AR	CC	TRACK, CURTAIN, CUBICLE, CEILING TYPE, SURFACE MOUNTED (PG-18-1, MCS 10800)
	2	CF	BRACKET, MONITOR, WALL MOUNTED
	1	VV	CABINET, INSTRUMENT, SURGICAL. 760 mm W x 405 mm D x 1830 mm H (30"W x 16"D x 72"H)
	1	VV	CART, CARDIAC ARREST SUPPORT
	1	VV	CLOCK, BATTERY OPERATED
	AR	VV	CURTAIN, CUBICLE, 2750 mm x 2280 mm (108" x 90") (EACH STATION)
	1	VV	DISPENSER, BIFOLD PAPER TOWEL, SURFACE MOUNTED
	1	VV	DISPENSER, SOAP, LIQUID, WALL MOUNTED
	2	VV	MONITOR, PHYSIOLOGICAL, ECG, HRT, BP, OX
	1	VV	MONITOR, DEFIBRILLATOR, MOBILE
	2	VV	STRETCHER, RECOVERY

Observation and Treatment Room Equipment & Utility Plan

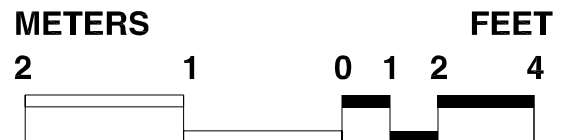
FINAL DRAFT 10-31-95
Revised 1/97



NOTES:

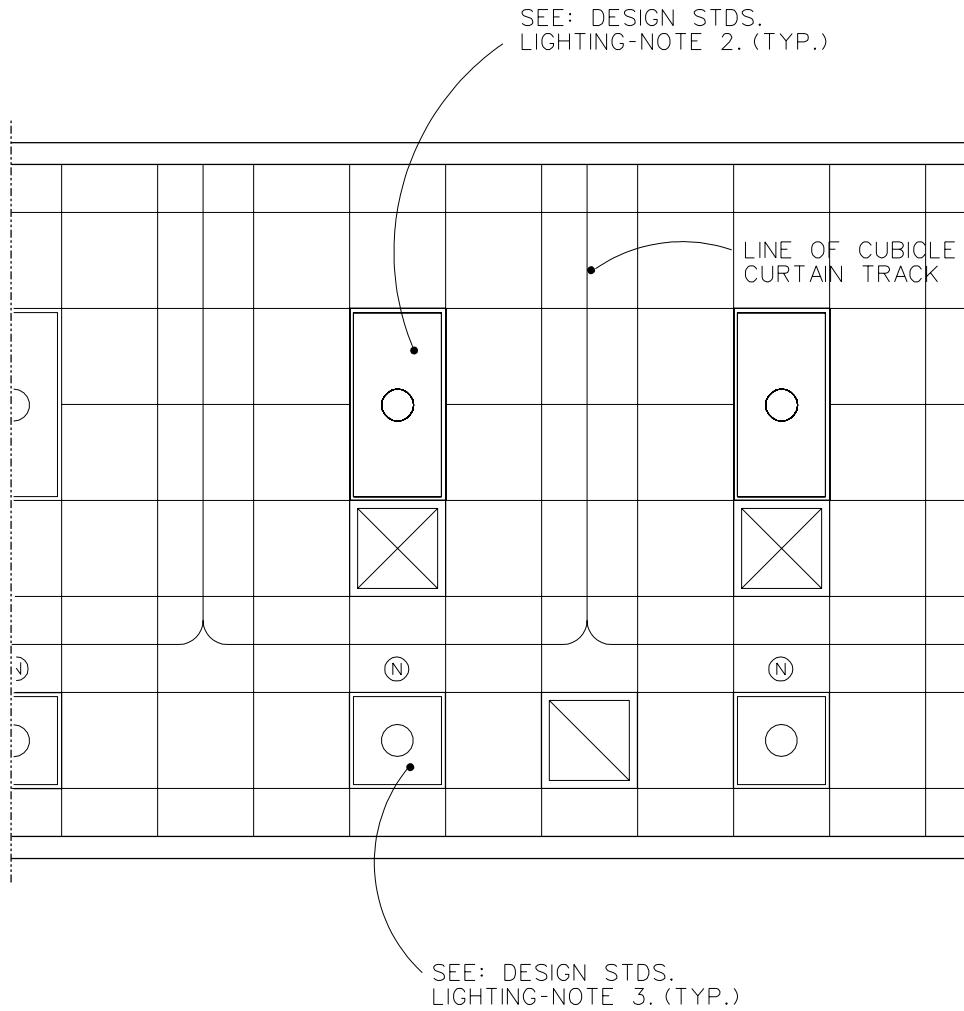
1. PATIENTS SHOULD BE OBSERVABLE FROM NURSES STATION.
2. ALL ELEMENTS TYPICAL AS NOTED
3. QUANTITY OF PATIENT CUBICLES WILL VARY BY PROJECT
4. ALLOW 80 NSF/7.4 NSM PER CUBICLE

26.0 NSM
280 NSF

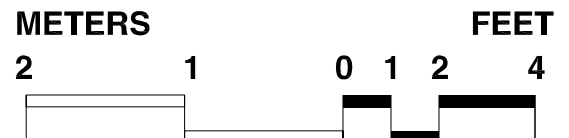


Observation and Treatment Room Reflected Ceiling Plan

FINAL DRAFT 10-31-95
Revised 1/97



- NOTE:
1. ALL ELEMENTS TYPICAL AS NOTED
 2. QUANTITY OF PATIENT CUBICLES WILL VARY BY PROJECT
 3. ALLOW 80 NSF/7.4 NSM PER CUBICLE



Design Standards

Observation and Treatment Room

ARCHITECTURAL

Ceiling: Acoustic lay-in ceiling tile with washable finish
 Ceiling Ht: 2700 mm (9'-0")
 Wall Finish: Veneer plaster with high-build glazed coating
 Wainscot: --
 Base: Resilient base
 Floor Finish: Vinyl composition tile
 Slab Depr: --
 Notes: 1: Entrance doors to observation and treatment area should be double doors with remote push-plate door operator.

SPECIAL EQUIPMENT

None

LIGHTING

General: Cubicle: 50/100 FC
 Special: --
 Notes: 1. Dual-level switching per cubicle to provide 50/100 FC level; switches located in PBPU; switching of general space by area.
 2. 600 mm x 1200 mm (2'x4') recessed fluorescent light fixture, acrylic prismatic lens, W/4-F32T8 lamps, 3500°K, CRI=75 (Minimum)
 3. 600 mm x 600 mm (2'x2') recessed fluorescent light fixture, acrylic prismatic lens, W/2-FB31T8 lamps, 3500°K, CRI=75 (Minimum)

POWER

General: 300W (non-PBPU receptacles)
 Emergency: --
 Notes:

COMMUNICATION

ADP: Yes
 Radio: --
 Telephone: Yes
 Intercom: --
 Pub. Addr: --
 Notes: 1. Nurse Call

HEATING, VENTILATING AND AIR CONDITIONING

Dry Bulb Temp Cooling: 24°C (76°F)
 Dry Bulb Temp Heating: 25°C (78°F)
 Minimum % Outside Air: 25
 100% Exhaust Air: --
 Noise Criteria: NC-35
 Steam: --
 Relative Humidity/Cooling: 50%
 Relative Humidity/Heating: 30%
 Minimum Air Changes/Hr.: 4
 Room Pressure: 0
 AC Load Lighting: 19 W/m² (1.8 W/sf)
 AC Load-Equipment: 65 W/m² (6W/sf)
 Number of People: 2 per Patient Bed
 Special Exhaust: --
 Notes:

PLUMBING AND MEDICAL GASES

Cold Water: Yes
 Hot Water: Yes
 Laboratory Air: --
 Laboratory Vacuum: --
 Sanitary Drain: Yes
 Reagent Grade Water: --
 Medical Air: Yes
 Medical Vacuum: Yes
 Oxygen: Yes
 Notes:

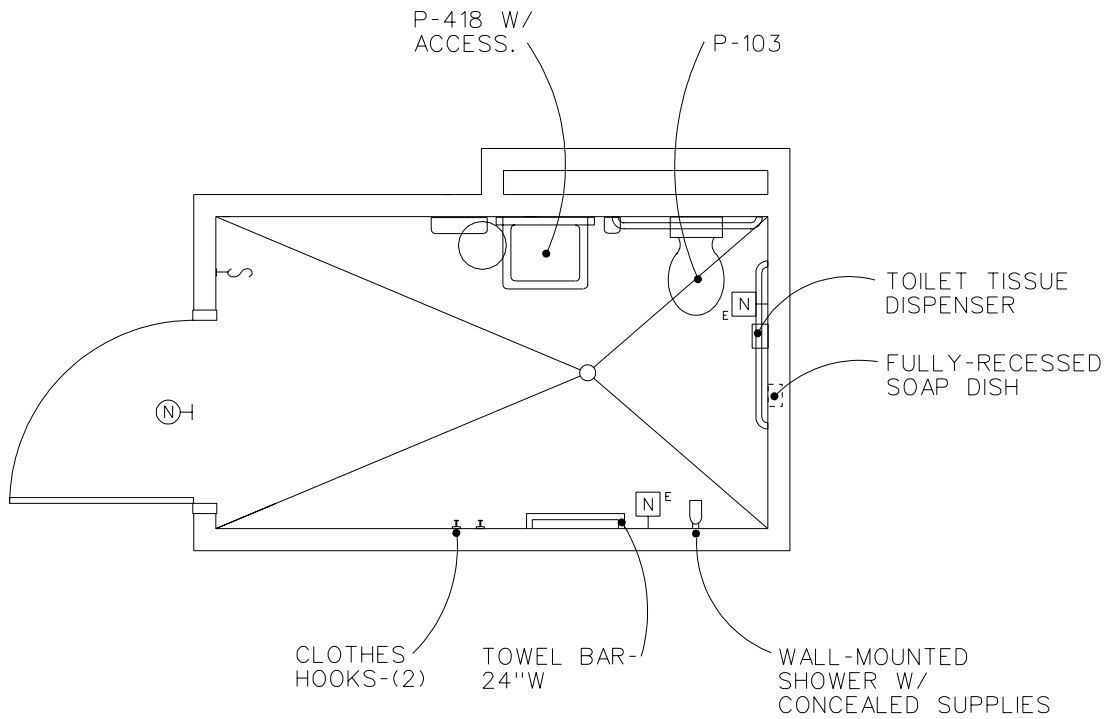
Equipment Guide List

Observation and Treatment Room

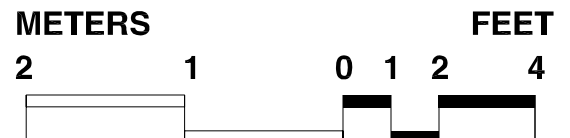
SYMBOL	QTY	AI	DESCRIPTION
P-418	1	CC	LAVATORY, SENSOR CONTROL (PG-18-1, MCS 15450; VOL. 3 SD 380)
	AR	CC	MIRROR, 400 mm W x 500 mm H (16"W x 20"H), WITH INTREGAL SHELF, OVER LAVATORY (PG-18-1, MCS 10800; PG-18-4, SD15)
	AR	CC	PREFABRICATED BEDSIDE PATIENT UNIT; TYPE 1 (PG-18-1, MCS 16685; PG-18-4, SD E-P-1, 3 & 6)
	AR	CC	TRACK, CURTAIN, CUBICLE, CEILING TYPE, SURFACE MOUNTED (PG-18-1, MCS 10800)
	AR	CF	BRACKET, MONITOR, WALL MOUNTED
	AR	CF	MODULAR CASEWORK, W/ OVERHEAD CABINETS AND WALL HANGER STRIP
	AR	VV	CART - "L", W/ C -LOCKER
	1	VV	CLOCK, BATTERY OPERATED
	1	VV	PC, COMPUTER SYSTEM, W/ KEYBOARD
	1	VV	DISPENSER, BIFOLD PAPER TOWEL, SURFACE MOUNTED
	1	VV	DISPENSER, SOAP, LIQUID, WALL MOUNTED
	AR	VV	LIGHT, EXAMINING, PORTABLE, 12 VOLTS, 20 AMPS
	AR	VV	MONITOR, PHYSIOLOGICAL, ECG, HRT, BP, OX
	1	VV	RECEPTACLE, WASTE, STEP-ON TYPE, APPROX. 305 mm (12") DIAMETER
	1	VV	STRETCHER, RECOVERY

Toilet/Bath, Wheelchair Equipment & Utility Room

FINAL DRAFT 10-31-95
Revised 1/97

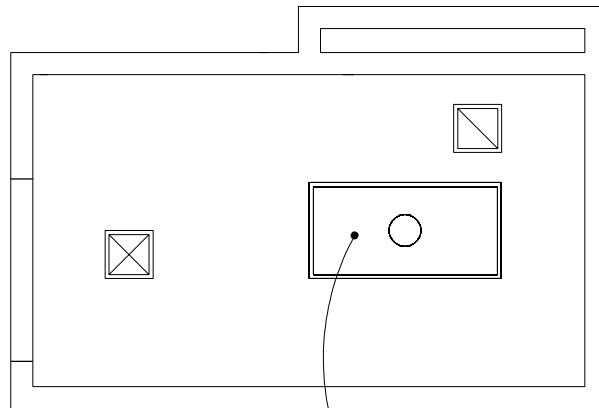


7.0 NSM
75 NSF

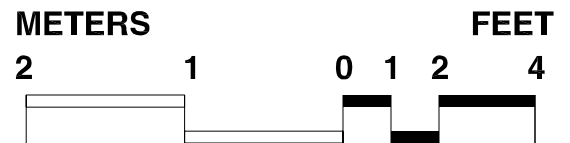


Toilet/Bath, Wheelchair Reflected Ceiling Plan

FINAL DRAFT 10-31-95
Revised 1/97



SEE: DESIGN STDS.
LIGHTING-NOTE 1. (TYP.)



Design Standards

Toilet/Bath Wheelchair

ARCHITECTURAL

Ceiling:	Gypsum Wallboard, paint
Ceiling Ht:	2700 mm (9'-0")
Wall Finish:	Paint
Wainscot:	Ceramic Tile
Base:	Ceramic tile
Floor Finish:	Ceramic tile
Slab Depr:	75 mm (3") depression to allow entire floor area to slope to drain
Notes:	1. 1120 mm (3'-8") wide door

SPECIAL EQUIPMENT

None

LIGHTING

General:	30 FC
Special:	--
Notes:	1. 600 mm x 1200 mm (2'x4') recessed fluorescent light fixture, acrylic prismatic lens, W/2-F32T8 lamps, 3500°K, CRI=75 (Minimum), UL listed for wet locations.

POWER

General:	--
Emergency:	--
Notes:	

COMMUNICATION

ADP:	--
Radio:	--
Telephone:	--
Intercom:	--
Pub. Addr:	--
Notes:	1. Nurse Call

HEATING, VENTILATING AND AIR CONDITIONING

Dry Bulb Temp Cooling:	25°C (78°F)
Dry Bulb Temp Heating:	25°C (78°F)
Minimum % Outside Air:	--
100% Exhaust Air:	Yes
Noise Criteria:	NC-40
Steam:	--
Relative Humidity/Cooling:	--
Relative Humidity/Heating:	--
Minimum Air Changes/Hr.:	10 ac/hr exhaust
Room Pressure:	Negative
AC Load Lighting:	15 W/m ² (1.4 Wsf)
AC Load-Equipment:	---
Number of People:	1
Special Exhaust:	--
Notes:	

PLUMBING AND MEDICAL GASES

Cold Water:	Yes
Hot Water:	Yes
Laboratory Air:	--
Laboratory Vacuum:	--
Sanitary Drain:	Yes
Reagent Grade Water:	--
Medical Air:	--
Medical Vacuum:	--
Oxygen:	--
Notes:	

Equipment Guide List Toilet/Bath Wheelchair

SYMBOL	QTY	AI	DESCRIPTION
	AR	CC	BAR, GRAB FOR WATER CLOSET (PG-18-1, MCS 10800; PG-18-4, SD 12)
	1	CC	DISPENSER, PAPER TOWEL AND DISPOSAL COMBINATION UNITS (PG-18-1, MCS 10800)
	1	CC	DISPENSER, TOILET TISSUE, DOUBLE ROLL PG-18-1, MCS 10800; PG-18-4, SD 12)
	2	CC	HOOK, CLOTHES (PG-18-1, MCS 10800)
P-418	1	CC	LAVATORY, SENSOR CONTROL (PG-18-1, MCS 15450; VOL. 3 SD 380)
	1	CC	MIRROR, WHEELCHAIR, 610 mm W x 910 mm H (24"W X 36"H) (PG-18-1, MCS 10800; PG-18-4, SD 15)
	1	CC	NURSE CALL, EMERGENCY STATION WITH CORRIDOR SIGNAL LIGHT CONNECTED TO NEAREST NURSE CONTROL STATION (PG-18-1, MCS 16761)
P-103	1	CC	WATER CLOSET, WALL HUNG (PG-18-1, MCS 15450 PG-18-4)
	1	VV	DISPENSER, SOAP, LIQUID, WALL HUNG
P-703	1	CC	SHOWER
	1	VV	RECEPTACLE, WASTE, STEP-ON TYPE, APPROX. 305 mm (12") DIAMETER