

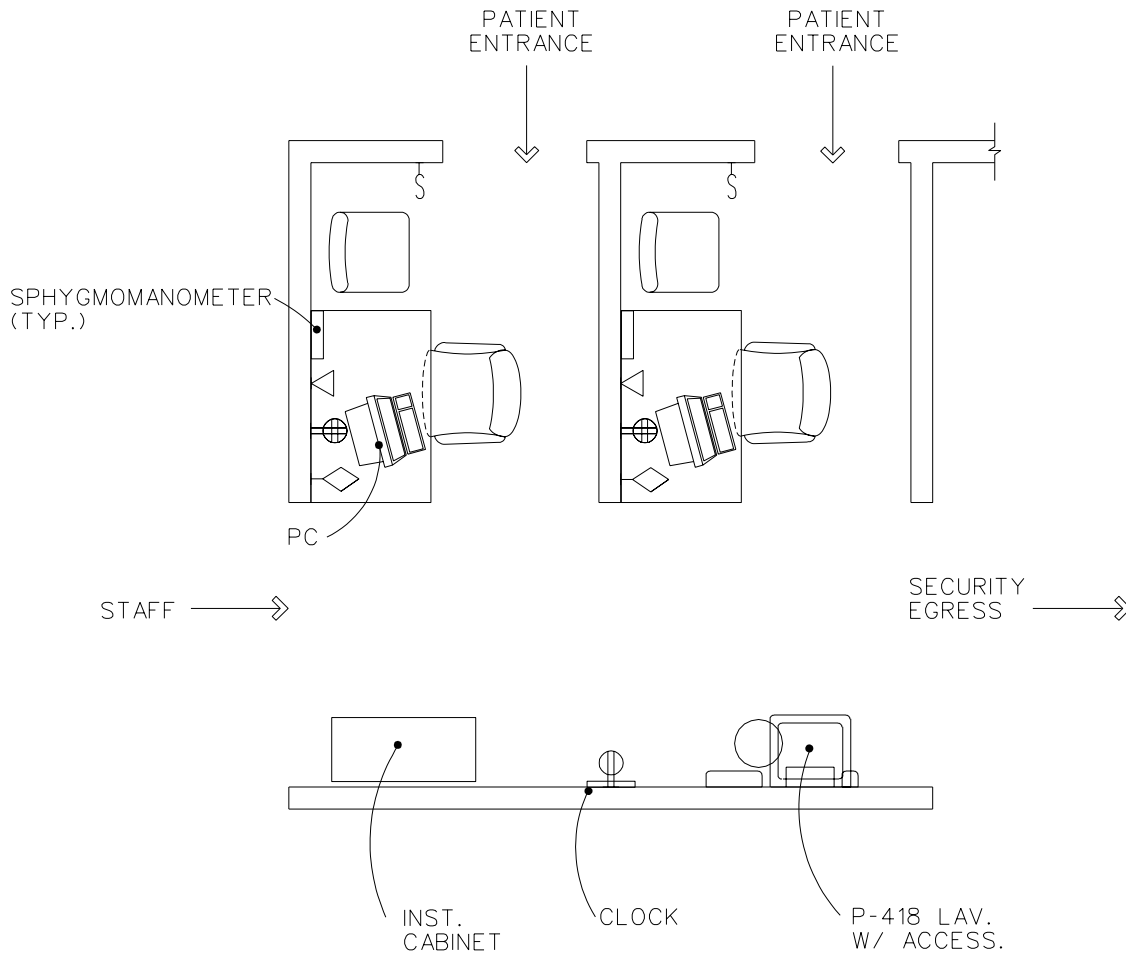
Section 4

**Design Guide Plates
and Data Sheets:
Reception Area**

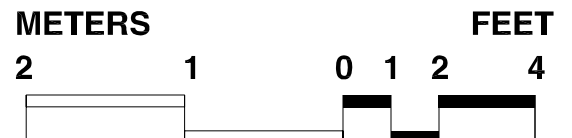
Guide Plate Series	Plate Number
Vital Sign Station	
Equipment & Utility Plan	4-1
Reflected Ceiling Plan	4-1
Design Standards	4-1
Equipment Guide List	4-1

Vital Sign Station Equipment & Utility Plan

FINAL DRAFT 10-31-95
Revised 1/97



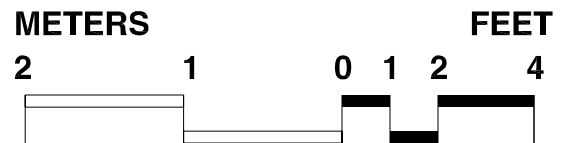
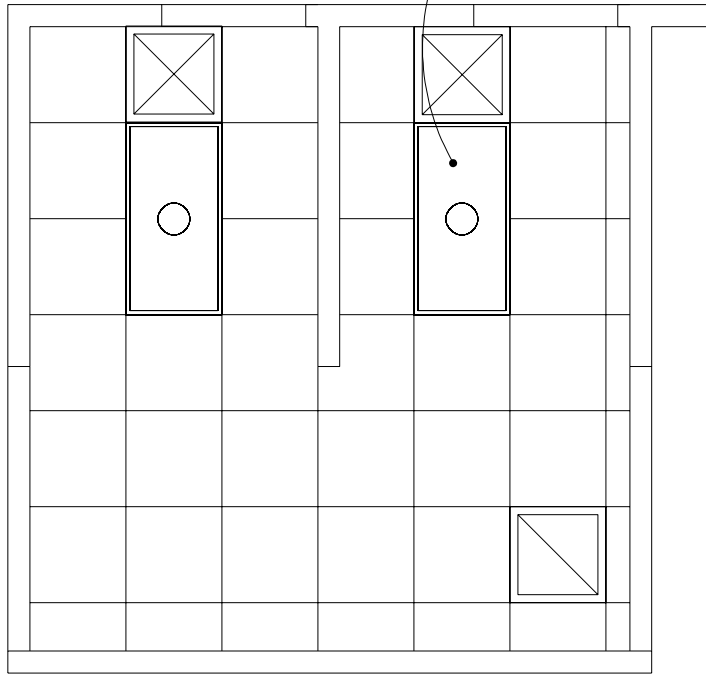
14.8 NSM
160 NSF



Vital Sign Station Reflected Ceiling Plan

FINAL DRAFT 10-31-95
Revised 1/97

SEE: DESIGN STDS.
LIGHTING-NOTE 2. (TYP.)



Design Standards

Vital Sign Station

ARCHITECTURAL

Ceiling:	Acoustic lay-in ceiling tile
Ceiling Ht:	2700 mm (9'-0")
Wall Finish:	Paint
Wainscot:	--
Base:	Resilient base
Floor Finish:	Vinyl composition tile
Slab Depr:	--
Notes:	

SPECIAL EQUIPMENT

None

LIGHTING

General:	50 FC
Special:	--
Notes:	<ol style="list-style-type: none"> Switching per station 600 mm x 1200 mm (2'x4') recessed fluorescent light fixture, acrylic prismatic lens, with 2-F32T8 lamps 3500°K, CRI=75 (Minimum)

POWER

General:	500W (Receptacles)
Emergency:	--
Notes:	

COMMUNICATIONS

ADP:	Yes
Radio:	--
Telephone:	Yes
Intercom:	--
Pub. Addr:	--
Notes:	

HEATING, VENTILATING AND AIR CONDITIONING

Dry Bulb Temp Cooling:	25°C (78°F)
Dry Bulb Temp Heating:	22°C (72°F)
Minimum % Outside Air:	15
100% Exhaust Air:	--
Noise Criteria:	NC-35
Steam:	--
Relative Humidity/Cooling:	50%
Relative Humidity/Heating:	30%
Minimum Air Changes/Hr.:	4
Room Pressure:	0
AC Load Lighting	17 W/m ² (1.6 W/sf)
AC Load Equipment:	35 W/m ² (3.2W/sf)
Number of People:	4
Special Exhaust:	--
Notes:	

PLUMBING AND MEDICAL GASES

Cold Water:	Yes
Hot Water:	Yes
Laboratory Air:	--
Laboratory Vacuum:	--
Sanitary Drain:	Yes
Reagent Grade Water:	--
Medical Air:	--
Medical Vacuum:	--
Oxygen:	--
Notes:	

Equipment Guide List Vital Signs Station

SYMBOL	QTY	AI	DESCRIPTION
P-418	1	CC	LAVATORY, SENSOR CONTROL (PG-18-1, MCS 15450; VOL. 3 SD 380)
	1	VV	CABINET, INSTRUMENT
	AR	VV	CHAIR, ROTARY, WITH ARMS
	AR	VV	CHAIR, STRAIGHT, WITHOUT ARMS
	1	VV	CLOCK, BATTERY OPERATED
	AR	VV	CRT, COMPUTER SYSTEM, WITH KEYBOARD
	1	VV	DISPENSER, BIFOLD PAPER TOWEL, SURFACE MOUNTED
	1	VV	DISPENSER, SOAP, LIQUID, WALL MOUNTED
	1	VV	RECEPTACLE, WASTE, STEP ON TYPE, APPROX., 305 mm (12") DIAMETER
	AR	VV	SPHYGMOMANOMETER, WALL HUNG
	1	VV	TABLE, APPROX. 815 mm W x 815 mm L x 760 mm H (32"W X 32"L X 30"H)