

Section 5

**Design Guide Plates
and Data Sheets:
Procedures Rooms**

Guide Plate Series	Plate Number
Cystoscopy Room	
Functional Plan	5-1
Equipment Plan	5-1
Utility Plan	5-1
Reflected Ceiling Plan.....	5-1
Design Standards	5-1
Equipment Guide List	5-1
Special Procedures/Broncoscopy Room	
Equipment & Utility Plan	5-2
Reflected Ceiling Plan.....	5-2
Design Standards	5-2
Equipment Guide List	5-2
EGD/Colonoscopy Procedures Room	
Equipment & Utility Plan	5-3
Reflected Ceiling Plan.....	5-3
Design Standards	5-3
Equipment Guide List	5-3
Proctoscopy/Sigmoidoscopy Room	
Equipment & Utility Plan	5-4
Reflected Ceiling Plan.....	5-4
Design Standards	5-4
Equipment Guide List	5-4
Gastric Motility Studies	
Equipment & Utility Plan	5-5
Reflected Ceiling Plan.....	5-5
Design Standards	5-5
Equipment Guide List	5-5

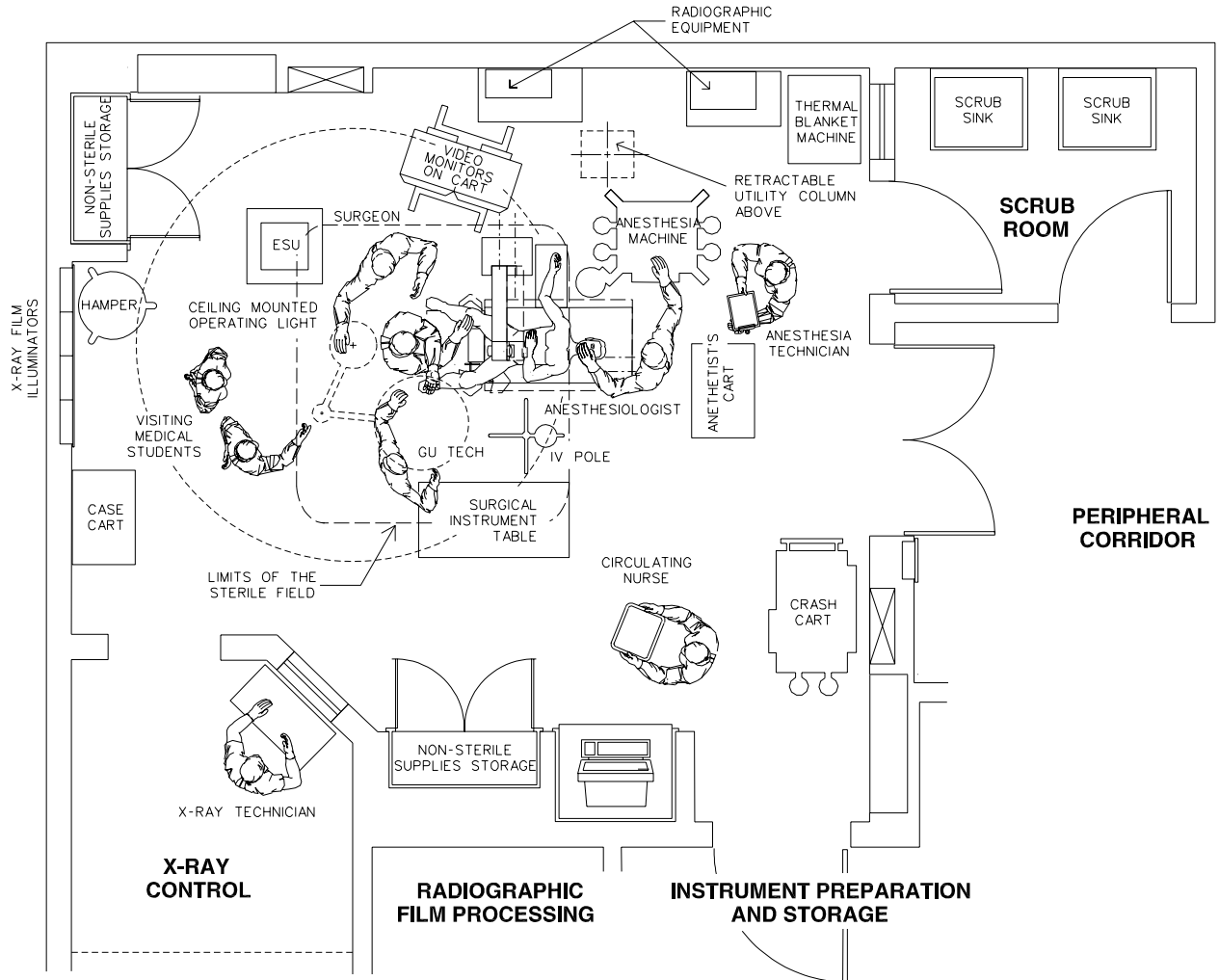
Section 5

**Design Guide Plates
and Data Sheets:
Procedures Rooms**

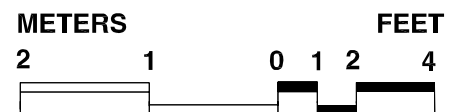
Guide Plate Series	Plate Number
Radiographic Film Processing Room	
Equipment & Utility Plan	5-6
Reflected Ceiling Plan.....	5-6
Design Standards	5-6
Equipment Guide List	5-6
Scope Cleaning/Film Storage	
Equipment & Utility Plan	5-7
Reflected Ceiling Plan.....	5-7
Design Standards	5-7
Equipment Guide List	5-7

Functional Plan Cystoscopy Room

First Draft 3-15-97

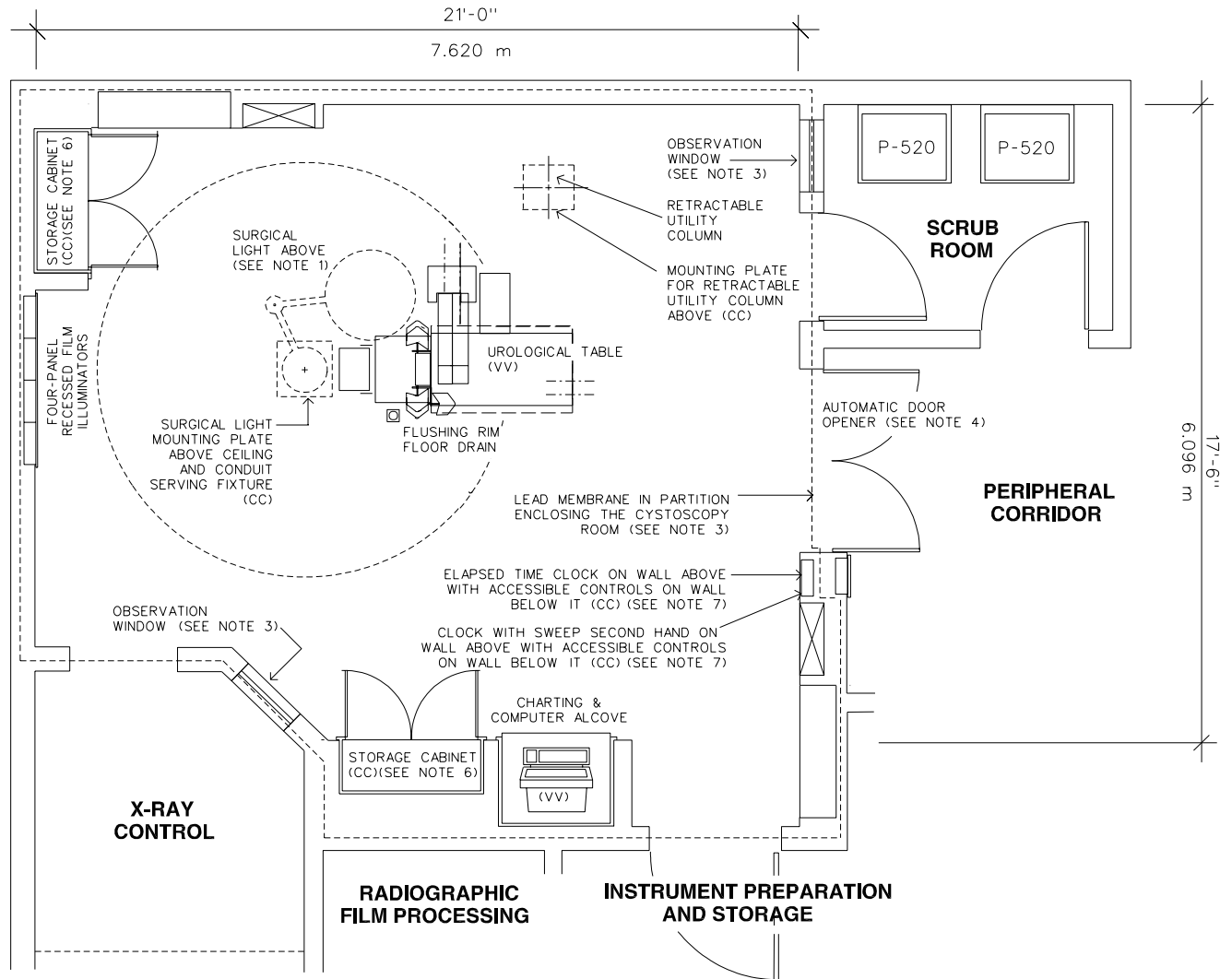


33.5 NSM
360 NSF

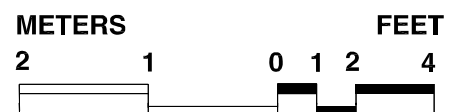


Equipment Plan Cystoscopy Room

First Draft 3-15-97



33.5 NSM
360 NSF



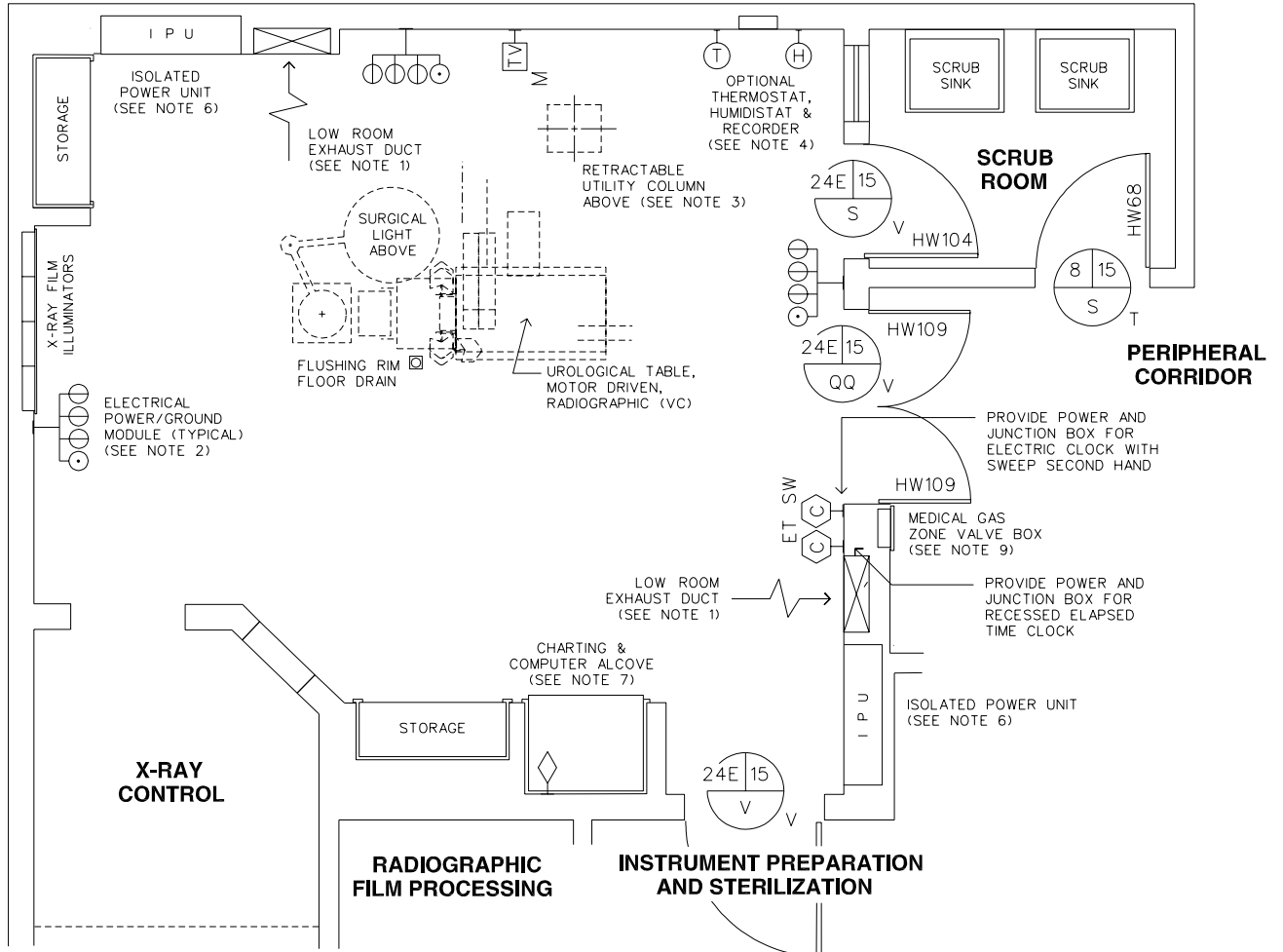
Equipment Plan Notes

Cystoscopy Room

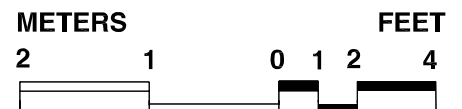
- Note 1 The surgical light fixtures are to be (CC) unless the VAMC chooses to select a specific surgical light fixture during the development of construction documents. If the VAMC chooses the fixtures, they may be either (CC), (CF), or (VC). All coordination involving structural support, utility connections, and other details regarding these lights are the responsibility of the A/E.
- Note 2 Nominal thickness of walls during design development should be shown as 8 inches thick by the A/E. This requirement is based upon the need to accommodate a variety of panel boards, return air ducts, and miscellaneous elements of construction that require a thicker partition than in other areas of a hospital building. Partitions other than the cystoscopy room enclosure should be shown nominally as 6 inches during design development by the A/E unless some special requirement dictates otherwise.
- Note 3 Provide x-ray shielding (see SD 24) consisting of a lead membrane in the partitions', lead lined doors; and leaded glass observation windows. The exact location of that membrane and details related to it are the A/E's responsibility.
- Note 4 An automatic door opener is to be provided in the corridor at the doors between the cystoscopy room and the peripheral corridor. A tread type of opener is permitted', however, a wall-mounted type of automatic door opener with a push-plate is preferred.
- Note 5 The ceiling mounted utility column may be one of two types: articulating, or retractable (telescoping) (as indicated on this guide plate series). (See guideplates series General Operating Room for a graphic representation of an articulating utility column used in a 450 square foot operating room.) The VAMC must decide which type of utility column to use during the design development phase of the project. If a choice is made at this point, the utility columns may be (W), (CF) or (CC). If the VAMC declines to make a timely decision, then the utility columns will be (CC). Coordination involving structural support, utility connections, and other details is the responsibility of the designer.
- Note 6 Modular Equipment - The VAMC has the option of choosing modular equipment in lieu of built-in casework. However, this decision must be made during the design development phase of the procurement. If wall-mounted modular casework is selected by the VAMC, the A/E must design the partitions to support the casework. It should be noted that the standard studs found in the master specifications are insufficient to carry this added weight-, therefore, the equipment manufacturer's recommendations for supporting partitions should be followed where appropriate.
- Note 7 Clocks - For more information regarding clocks in operating room, see MCS, Division 16.
- Note 8 See Chapter 286 of the Equipment Guide List for additional equipment not shown.

Utility Plan Cystoscopy Room

First Draft 3-15-97



33.5 NSM
360 NSF



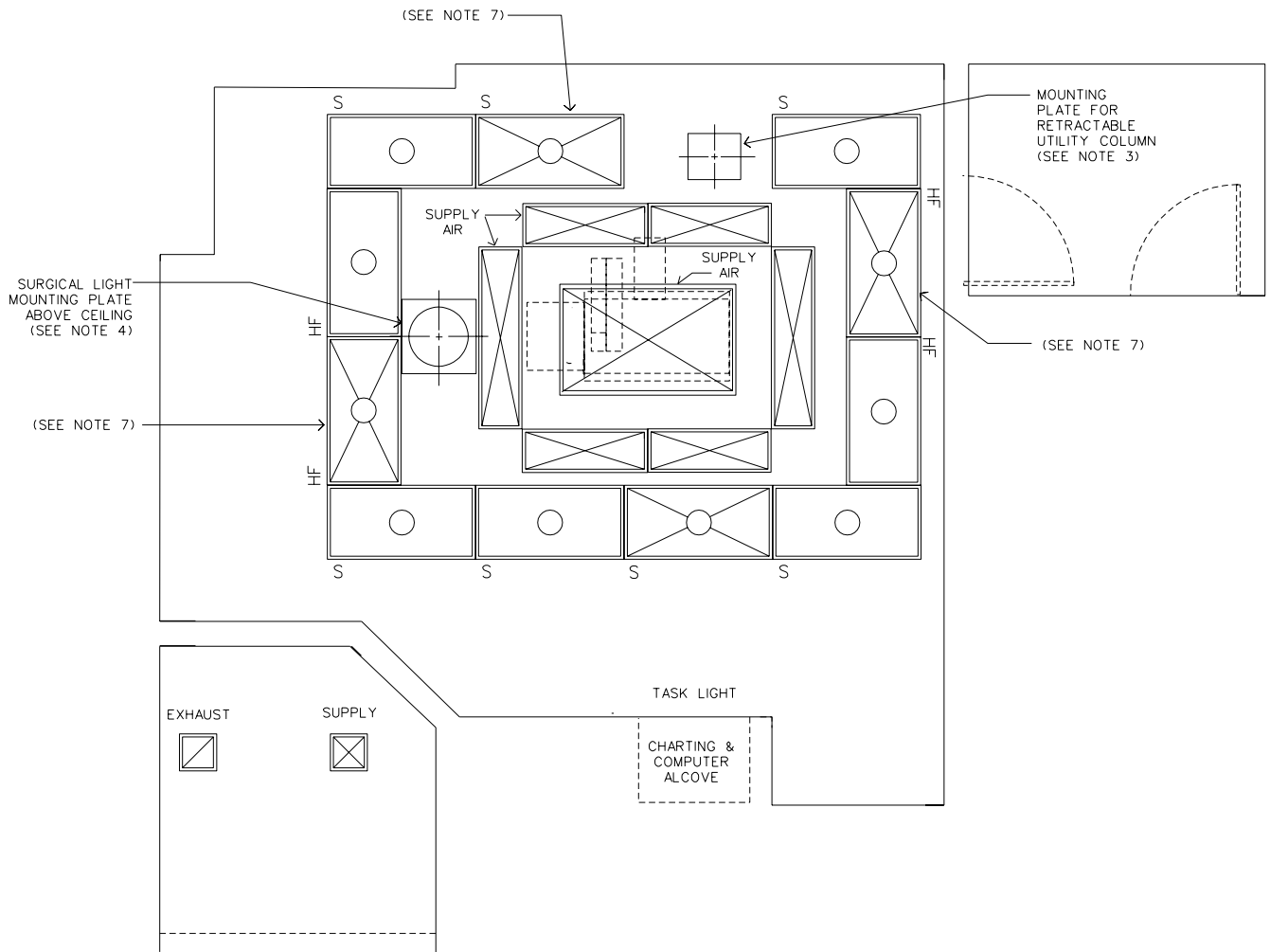
Utility Plan Notes

Cystoscopy Room

- Note 1 Exhaust Air Grilles - Provide a minimum of two exhaust air grilles in this operating room. If only two grilles are provided, locate them opposite each other. Where there are more than two exhaust grilles, they are to be centered on each of the walls of the operating room. The bottom of each exhaust air grille is to be seven inches above the finished floor. See the HVAC Design Manual for additional information
- Note 2 Electrical Power/Ground Module - A separate power/ground module is to be placed near the center of each wall of the operating room. Each power/ground module is to have 3 duplex power receptacles and 1 grounding receptacle, These power/ground receptacles are to be located 435mm (18 inches) above the finished floor. See the Electrical Design Manual.
- Note 3 Retractable Utility Column Provide connections on utility column as delineated in Chapter 286, Equipment Guide List.
- Note 4 HVAC Controllers - Provide one of the two following systems for controlling room temperature and humidity, in the design of the mechanical system. The first system is indicated on the utility plan below. It involves locating a thermostat, a humidistat, and a recorder in the operating room. The second system involves temperature and humidity sensors located in the operating room with a recorder located remotely. See the HVAC Design Manual for Hospitals and MCS, Division 15 for additional information.
- Note 5 Nitrogen Control Panel - For information regarding this panel see NFPA 99, Chapter 4 and Master Specifications, Section 15491.
- Note 6 Isolated Power Unit - Each of the isolated power units is to serve two adjacent walls. For this reason the units are to be located near the corners of the room and diagonally opposite from each other. See Electrical Design Manual, Chapter 11, for more Information regarding isolated power.
- Note 7 Computer terminal - Utility requirements for the in-room computer terminal are to be determined by the VAMC based upon the computer system to be used. This information is to be given to the A/E for incorporation into the construction documents, The printer for the in-room computer terminals is to be located remotely.
- Note 8 Laser Panel - It is understood that air-cooled lasers are soon to replace water cooled lasers. For this reason, the future impact of air cooled lasers on the design of the HVAC system must be considered by the designer. In spite of this anticipated change, it is the policy of the VHA program official that water service is to be provided in any operating rooms where existing water cooled lasers are to be continued in use.
- Note 9 Zone Valve Box - A separate zone valve box is to be provided for each operating room (anesthetizing location) in accordance with NFPA 99 - Chapter 4. This cabinet is to be located in the peripheral corridor near the door to the operating room it serves. See MCS. Division 15 for a description.

Reflected Ceiling Plan Cystoscopy Room

First Draft 3-15-97



33.5 NSM
360 NSF



Reflected Ceiling Plan Notes

Cystoscopy Room

- Note 1 Supply Air Outlet - Perforated panel centered over operating table with no obstructions. A/E Is to design it. (Do not scale.) This outlet is to provide 30 percent of supply air for the operating room. Air distribution is to be in a downward vertical direction. See the HVAC Design Manual for Hospital Projects.
- Note 2 Supply Air Outlets - Stainless steel multiple slot panel diffusers to be located above the perimeter of the "clean air zone". (See Functional Plan.) A/E is to design them. (Do not scale.) These outlets are to provide 70 percent of supply air for the operating room. This air is to be discharged in a vertical air stream inclined at an outward angle of fifteen degrees from the center of the room. See the HVAC Design Manual.
- Note 3 Mounting Plate for Utility Column - (Do not scale.) Size of mounting plate varies with manufacturer. Exact type, size, type, and location are to be determined by the A/E in coordination with the VAMC and Central Office program officials.
- Note 4 Surgical Light Fixture - Note that the location of the mounting plate is not to be placed directly over the operating table. That zone must be kept unobstructed for the supply air outlet and the plenum serving it above the ceiling. See the Electrical Design Manual, Chapter 6.
- Note 5 Surgical Microscope - If VAMC chooses a ceiling-mounted microscope in lieu of a floor-mounted microscope, it must be supported by a fixed mounting plate. A ceiling track-mounted system is not to be used for the microscope due to concerns regarding asepsis. The exact size of the mounting plate depends upon the microscope selection. (Do not scale the guideplate.) Coordinate details and utilities requirements with the VAMC.
- Note 6 Fluorescent Light Fixtures - General illumination. Only 2 x 4 recessed fixtures are to be used in the operating room due to the fact that this size of fixture (with 6 lamps - Type D) is required in order to deliver enough ambient illumination while also producing color corrected light in the operating room. The design is not to include 1 x 4 fluorescent fixtures. For more information see Electrical SD F-27.
- Note 7 General Illumination on Emergency Power - 50 percent of the fluorescent light fixtures above the operating table are to be provided emergency power with battery backup. The fluorescent fixtures above the head of the patient (where the nurse anesthetist administers anesthesia and monitors the patient's vital signs) are to be provided emergency power. (See CS 800-3.)
- Note 8 Video Monitors (A proposal to be considered by the VAMC and the A/E) - Is to provide a fiber-optic connection (enclosed in conduit) from the video monitors in the operating room to the microscope in the frozen section area of the clinical laboratory. This would permit the surgical team in the operating room to see what the pathologist is talking about over the intercom while examining the biopsy specimen. This installation would reduce the need for anatomical pathologist to leave a contaminated area. Also, the surgical team would not have to wait for the pathologist to clean up, gown, and come to the operating suite to examine the tissue specimen.
- Note 9 Sprinkler System - Coordinate the location of the sprinklers with other ceiling systems in accordance with MCS, Division 15 and Plumbing Design Manual, Medical Centers.
- Note 10 Provide no ceiling tracks for intravenous solutions in the design. This restriction is based upon concerns for asepsis in the operating room.

Design Standards

Cystoscopy Room

ARCHITECTURAL

Ceiling:	Plaster
Ceiling Ht:	2900mm (9'-6")(see note 1)
Wall Finish:	Plaster
Wainscot:	--
Base:	Welded Seamless Flooring
Floor Finish:	Welded Seamless Flooring
Slab Depr:	--
Notes:	1. Additional 8" accessible space above ceiling for microscope or 10'-2"

SPECIAL EQUIPMENT

None

LIGHTING

General:	2152lx(200 fc)(see note 1)
Special:	Surgical Light(see note 2)
Emergency:	50% Gen. Fluorescent(see note 3)
Notes:	1. Color improved lamps matching color temperature of surgical light. 2. (1) TYPE 840A, 1500 W 3. Battery backup in (4) fixtures.

POWER

General:	(1) Module each wall
Special:	(2) 7-1/2 KVA 12-Circuit IPU
Emergency:	Each IPU & X-Ray unit (1) Film Processor per Suite

COMMUNICATION

Patient Monitor:	Yes
Nurse Call:	--
Code One:	--
CCTV:	Empty Conduit
Telephone:	Wall Mounted Hand Free
Intercom:	Part of Telephone
Pub. Addr:	Empty Conduit
ADP:	Empty Conduit
Radio:	Empty Conduit

HEATING, VENTILATING AND AIR CONDITIONING

Dry Bulb Temp Cooling:	190 C(68°F)
Dry Bulb Temp Heating:	230C(75°F)
Minimum % Outside Air:	100
100% Exhaust Air:	Yes
Noise Criteria:	NC-40
Steam:	--
Relative Humidity/Cooling:	55%
Relative Humidity/Heating:	50%
Minimum Air Changes/Hr.:	15 Occupied 8 Unoccupied
Room Pressure:	Positive
AC Load Lights:	91W/m 2 (8.5W/SF)
AC Load Equipment:1	19W/m 2 (11.1W/SF)
Number of People:	12
Special Exhaust:	--
Notes:	

PLUMBING AND MEDICAL GASES

Cold Water:	Yes
Hot Water:	--
Laboratory Air:	--
Laboratory Vacuum:	--
Sanitary Drain:	Yes
Medical Air:	Yes
Medical Vacuum:	Yes
Oxygen:	Yes
Nitrogen Oxide:	Yes
Nitrogen:	Yes
Anesthesia Evac:	Yes
Notes:	--

Equipment Guide List

Cystoscopy Room

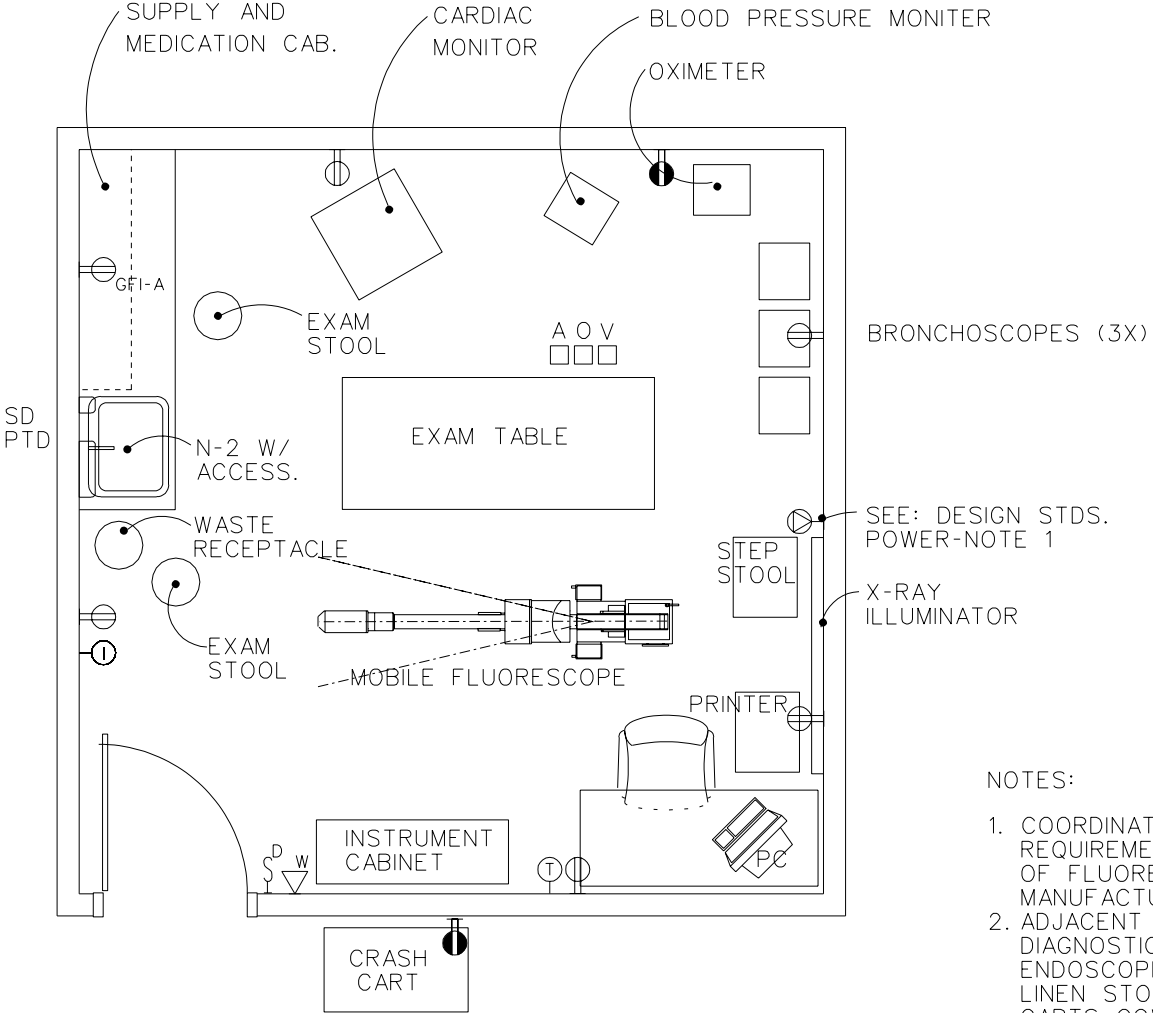
SYMBOL	QTY	AI	DESCRIPTION
	1	VC	TABLE, UROLOGICAL, RADIOGRAPHIC. MOTOR DRIVEN, WITH X-RAY TUBE SUPPORT
	1	CC	FLOOR DRAIN, AUTOMATIC FLUSHING TYPE (PG-18-1. MCS 15400. H-18-4. SD 305)
	16	cc	RECEPTACLE. ELECTRICAL, SIMPLEX, 120 VOLT. 20 AMP. HOSPITAL GRADE TYPE, STRAIGHT BLADE, 1 MODULE OF 3 SIMPLEX RECEPTACLES ON EACH WALL WITH ONE GROUNDING JACK B@DE. ONE MODULE OF THREE SIMPLEX RECEPTACLES ON EACH WALL WITH ONE GROUNDING JACK PER MODULE AND FOUR SIMPLEX STRAIGHT BLADE, HOSPITAL GRADE AND TWO GROUNDING RECEPTACLES IN THE SURGICAL COLUMN (PG-18-1. MCS 16140: H-18-3. CS 801-3)
	1	VV	RADIOGRAPHIC TUBE AND HIGH VOLTAGE CABLES, 500 MA. SINGLE PHASE
AR		CC	SERVICES, ELECTRICAL. SPECIAL AS REQUIRED FOR THE ABOVE EQUIPMENT
	4	CC	ILLUMINATOR. FILM. X-RAY. RECESSED, 120 VOLT. 20 AMP. 356mm x 432mm (14" x 17-) (INSTALLATION NOT TO BE COMBINED WITH IPU'S OR OTHER ELECTRICAL DEVICES) (PG-18-1, MCS 16510)
	1	CF	LIGHT, MAJOR, SURGICAL WITH VARIABLE INTENSITY CONTROL, SINGLE POINT SUSPENSION, CEILING MOUNTED (LOCATION INSTRUCTIONS AVAIL-ABLE FROM ELECTRICAL SERVICE) (PG-18-1. MCS 16515)
AR		CC	ILLUMINATION, GENERAL. RECESSED, WITH THREE LEVEL CONTROL (PG-18-1. MCS 16510)
	1	CC	NURSE CALL. EMERGENCY STATION, ACTIVATED BY PUSH BUTTON ON WALL, WITH CORRIDOR SIGNAL LIGHT (PG-18-1, MCS 16761)
	1	CC	COLUMN, TELESCOPING UTILITY, CEILING MOUNTED (PG-18-1, MCS 15491) LOCATE AT HEAD OF TABLE 48" TO 72" FROM THE CENTERLINE AND 24' TO 48' TO THE LEFT OF THE CENTERLINE OF THE TABLE COLUMN CONTAINS THE FOLLOWING: 2 INLETS, MEDICAL VACUUM (PG-18-1. MCS 15491) 1 OUTLET, NITROUS OXIDE (PG-18-1. MCS 15491) 2 OUTLETS, OXYGEN (IT 08-1. MCS 15491) 1 OUTLET, MEDICAL AIR (PG-18-1, MCS 15491) 1 OUTLET. NITROGEN (PG-18-1, MCS 15491) 1 INLET,DEDICATED ANESTHESIA GAS EVACUATION (PG-18-1, MCS 15491) 1 INLET,MASS ATOMIC SPECTROMETER (BLANK OUTLET)

Equipment Guide List

Cystoscopy Room (cont.)

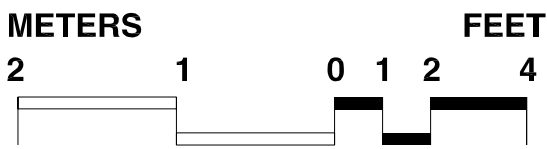
SYMBOL	QTY	AI	DESCRIPTION
	2	CC	ISOLATED POWER UNIT PROVIDES ISOLATED ELECTRICAL POWER, INCLUDES LINE ISOLATION MONITOR, ISOLATION TRANSFORMER AND CIRCUIT BREAKERS (DETAILS AVAILABLE FROM ELECTRICAL SERVICE)
	1	CC	CLOCK. ELECTRIC TIME ELAPSED, RECESSED (PG-18-1, MCS 10360)
	1	CC	CLOCK, ELECTRIC WITH SWEEP SECOND HAND, RECESSED (PG-18-1, MCS 10360)
	AR	CC	OUTLET, ELECTRICAL, 120 VOLT. 20 AMP, RECESSED FOR CLOCK
	AR	VV	MONITOR. VIDEO
T-14	AR	CC	CABINET, STORAGE, WITH SLOPING TOP, 2 HINGED PANEL DOORS, LOCK AND 5 ADJUSTABLE SHELVES. 48"W x 22"D x 84"H (PG-18-1.MCS 12301; H-18-4, SD 70K)
	1	VV	CRT, COMPUTER SYSTEM, WITH KEYBOARD
	1	CC	RECEPTACLE, ELECTRICAL, QUADRAPLEX. FOR COMPUTER EQUIPMENT ITEMS (PG-18-1, MCS 16140, H-18-3. CS 866- 1)
	AR	VV	KICKBUCKETS
	AR	VV	STOOL. SURGICAL
	1	VV	TABLE. SURGICAL INSTRUMENT
	AR	VV	CART,CASE
	1	CC	INTERCOM, STATION (PG-18-1, MCS 16760)
	1	CC	OUTLET, INTERCOM (EMPTY CONDUIT SYSTEM) (PG-18-1, MCS 16111)
	1	VV	UNIT, ELECTROCAUTERY
	1	VV	UNIT. HYPERIHYPOThERMIA
	1	VV	HAMPER, SOILED LINEN, WITH HINGED SELF CLOSING TOP, 20" DIA.
	1	VV	CART, EMERGENCY,"CRASH CART" APPROX, 36"W X 2 I'D
	1	VV	MACHINE. ANESTHESIA, PORTABLE
	1	VV	CART, ANESTHESIA EQUIPMENT
	1	VV	STAND, IV, MOBILE
	1	VV	MACHINE, SUCTION

Special Procedures/Bronchoscopy Rm Equipment & Utility Plan

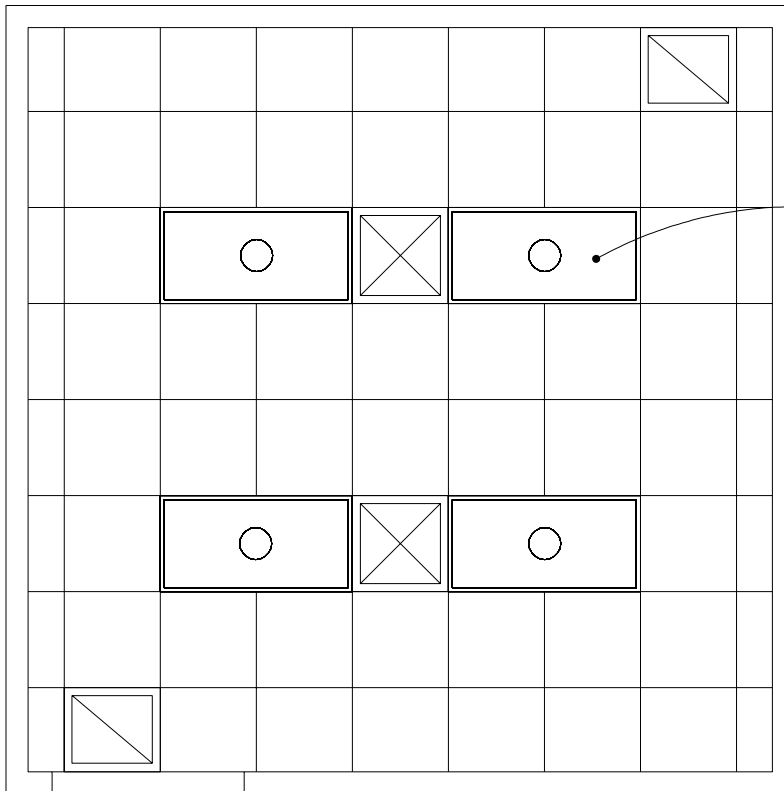


- NOTES:
1. COORDINATE SHEILDING REQUIREMENTS OF FLUORESCOPE WITH MANUFACTURER
 2. ADJACENT ROOMS INCLUDE: DIAGNOSTIC ROOM, ENDOSCOPIC CLEANING, LINEN STORAGE, CARTS, GOWNING AND RECOVERY ROOMS

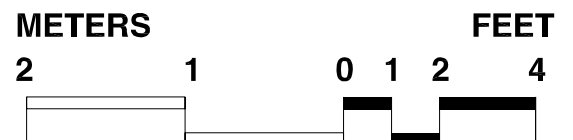
22.3 NSM
240 NSF



Special Procedures/Bronchoscopy Rm Reflected Ceiling Plan



SEE: DESIGN STDS.
LIGHTING-NOTE 1 (TYP.)



Design Standards

Special Procedures / Bronchoscopy Room

ARCHITECTURAL

Ceiling:	Acoustic lay-in ceiling Tile
Ceiling Ht:	2900mm (9'-6")
Wall Finish:	Vinyl Wall Covering
Wainscot:	--
Base:	Resilient base
Floor Finish:	Vinyl Composition Tile
Slab Depr:	--
Notes:	1. 900mm (3'-0") wide entry door with 200 mm x 250mm (8" x 10") tempered glass view window.

SPECIAL EQUIPMENT

None

LIGHTING

General:	70 FC
Special:	--
Notes:	1. 20mm x 1200mm (2' x 4') recessed fluorescent light fixtures, acrylic prismatic lens, W/3-F32T8 lamps, 3500°k, CRI+75 (minimum) 2. Illumination level controlled by dimmer.

POWER

General:	1200 W (receptacles)
Emergency:	500 W (receptacles)
Notes:	1. Special receptacle for mobile fluoroscopy unit. (Coordinate with system supplier). 2. Receptacle for crash cart to be on emergency power.

COMMUNICATION

ADP:	Yes
Radio:	--
Telephone:	Yes
Intercom:	Yes
Pub. Addr:	--
Notes:	1. Junction box for CCTV camera with conduit to adjacent diagnostic room. 2. Junction box for poly somnograph cabling with conduit diagnostic room. 3. Nurse call system.

HEATING, VENTILATING AND AIR CONDITIONING

Dry Bulb Temp Cooling:	24°C (76°F)
Dry Bulb Temp Heating:	25°C (78°F)
Minimum % Outside Air:	--
100% Exhaust Air:	Yes
Noise Criteria:	NC-40
Steam:	--
Relative Humidity/Cooling:	50%
Relative Humidity/Heating:	30%
Minimum Air Changes/Hr.:	8
Room Pressure:	Negative
AC Load Lighting:	86 w/sm (8w/sf)
AC Load-Equipment:	22 w/sm (2w/sf)
Number of People:	3
Special Exhaust:	--

- Notes:
1. Room exhaust shall be accomplished via low level outlets.
 2. Provide a special hood and exhaust for instrument cleaning fumes if instrument cleaning is done here rather than a separate room.
 3. If Bronchoscopy room is used for tuberculosis patient exams min. air changes per hr. increases to 12 and provide filtration as per TB Criteria in HVAC Design Manual for Hospitals Projects.

PLUMBING AND MEDICAL GASES

Cold Water:	Yes
Hot Water:	Yes
Laboratory Air:	--
Laboratory Vacuum:	--
Sanitary Drain:	Yes
Reagent Grade Water:	--
Medical Air:	Yes
Medical Vacuum:	Yes
Oxygen:	Yes
Notes:	

Equipment Guide List

Special Procedures / Bronchoscopy Room

SYMBOL	QTY	AI	DESCRIPTION
--------	-----	----	-------------

NOTE: BRACKET, VACUUM BOTTLE SLIDE (PG-18-1, MCS 15491; PG-18-4, SO 336)

NOTE: INTERCOM, STATION (PG-18-1, MCS 16760)

NOTE: OUTLET, INTERCOM (EMPTY CONDUITSYSTEM (PG-18-1, MCS 16111)

NOTE: OUTLET, WALL, MEDICAL AIR (PG-18-1, MCS 15491; H-18-3, CS 310-1)

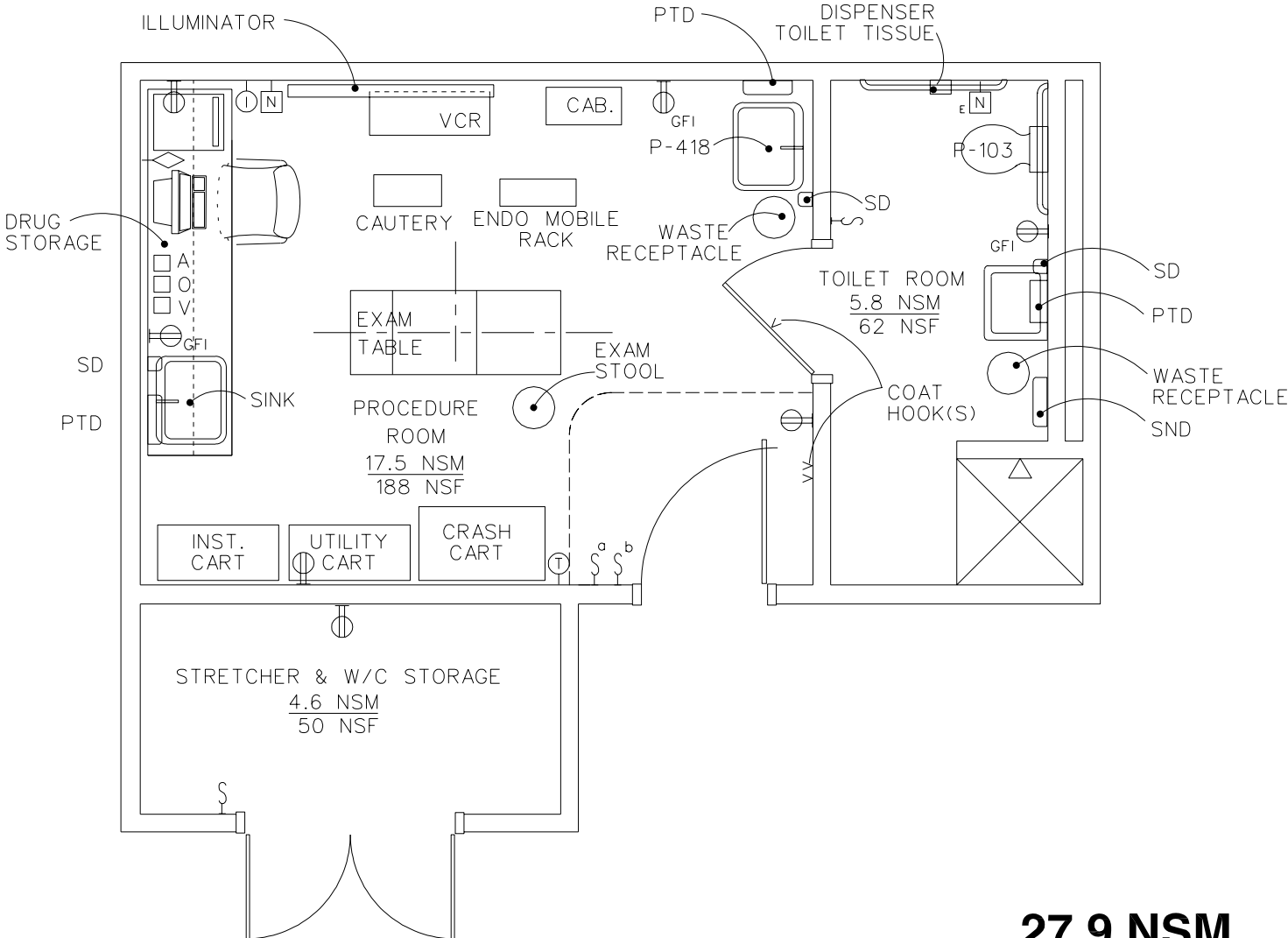
NOTE: OUTLET, WALL, OXYGEN (PG-18-1, MCS 15491; H-18-3, CS 310-1)

NOTE: OUTLET, WALL, VACUUM (PG-18-1, MCS 15491; H-18-3, CS 310-1)

NOTE: ELECTRICAL RECEPTACLE FOR CRASH CART TO BE ON EMERGENCY POWER.

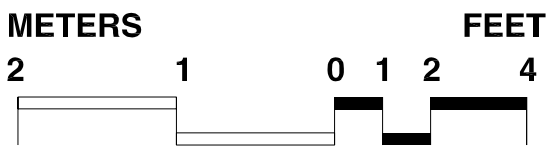
	1	VV	BLOOD PRESSURE MONITOR
	3	VV	BRONCHOSCOPES
	1	VV	CABINET, INSTRUMENTS, 1219 MM X 406 MM X 1829 MM, (48" X 16" X 72") WITH GLAZED DOORS, SLOPING TOP
	1	VV	CART, EMERGENCY, "CRASH CART" APPROX., 914 MM X 533 MM (36" X 21 ")
	1	VV	CART, VIDEO, ENDOSCOPIC
	1	VV	DISPENSER, PAPER TOWEL, SURFACE MOUNTED
	1	VV	DISPENSER, SOAP, LIQUID, WALL MOUNTED
	AR	VV	ILLUMINATORS, FILM, X-RAY, 120 VOLT, 20 AMP, WALL MOUNTED (1 BANK OF 4)
	1	VV	LIGHT SOURCE, FIBER-OPTIC, ENDOSCOPIC WI CART
	AR	CF	MODULAR CASEWORK
	1	VV	MONITOR, CARDIAC - ON CART (FLOOR UNIT)
	1	VV	MONITOR, EAR OXIMETER
	1	VV	RECEPTACLE, WASTE, 330 MM (13")
N-2	1	CF	SINK, CORROSION RESISTING STEEL, WITH END OR CORNER DRAIN OUTLET, 559 MM X 406 MM X 279 MM (22" X 16" X 11") (PG-1 8-1 & PG-1 8-6, MCS 11 602)
	2	VV	STOOL, STEP, APPROX., 508 MM X 406 MM (20" X 16")
	1	VV	TABLE, EXAMINATION-PATIENT, X-RAY, TRANSLUCENT TOP
	1	VV	X-RAY/FLUOROSCOPE (MOBILE UNIT & MONITOR)

EGD / Colonoscopy Procedures Room Equipment & Utility Plan

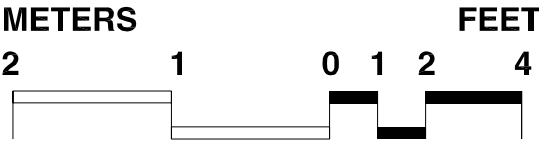
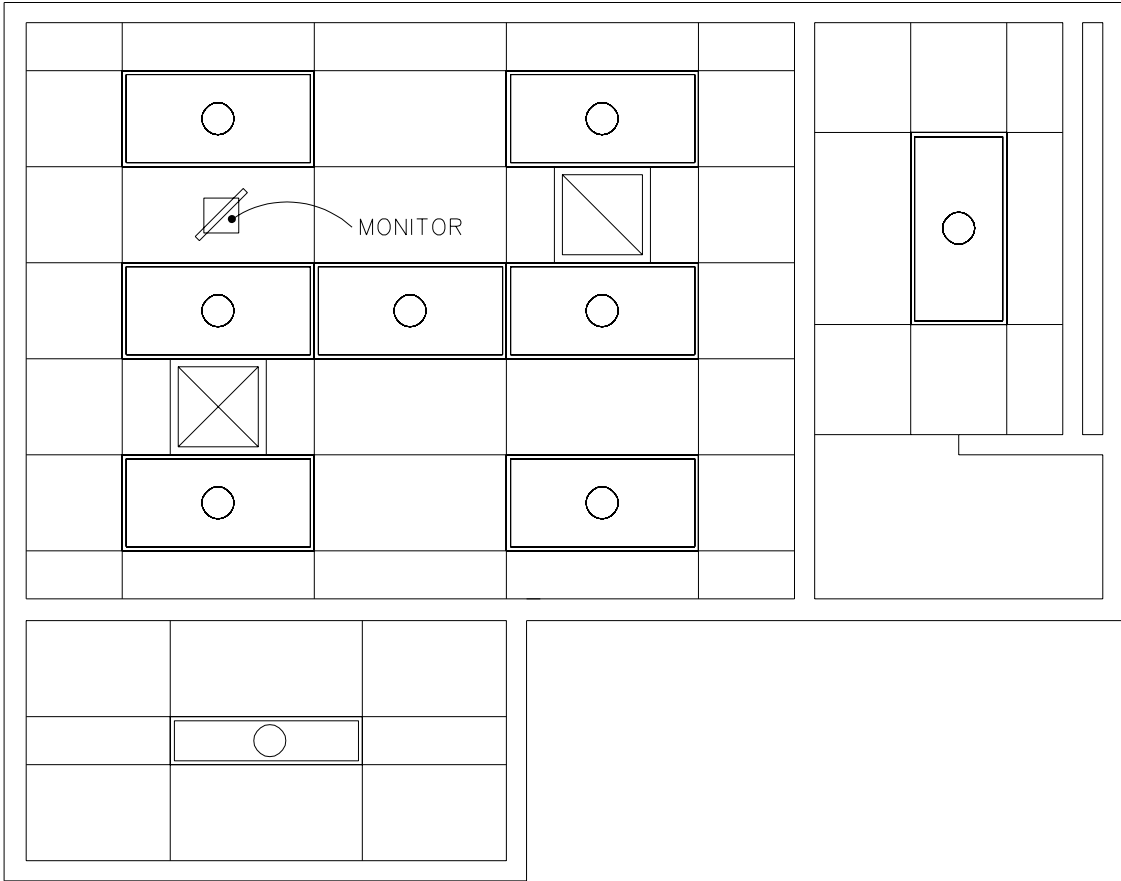


27.9 NSM
300 NSF

NOTE: When Procedures Rooms are provided, there should be two or more.



EGD / Colonoscopy Procedures Room Reflected Ceiling Plan



Design Standards

EGD / Colonoscopy Procedures Room

ARCHITECTURAL

Ceiling: Acoustic lay-in Ceiling Tile
 Ceiling Ht: 2740 mm (9'-0")
 Wall Finish: Paint
 Ceramic Tile in Toilet Room
 Wainscot: --
 Base: Resilient sheet flooring w/ integral base
 Floor Finish: Resilient sheet flooring
 Ceramic Tile in Toilet Room
 Slab Depr: --
 Notes: 1. 900mm (3'-0") wide entry door.

SPECIAL EQUIPMENT

None

LIGHTING

General: EGD & Colonoscopy Rm.: 100 FC
 Toilet Rm.: 30 FC
 Special: --
 Notes: 1. 50% of lighting on critical power.
 2. 600 x 1200 mm (2'x4') recessed
 fluorescent light fixture, acrylic
 prismatic lens, W/3-F32T8 lamps,
 4100°K, CRI=85 (Minimum)
 3. 300 x 1200 mm (1'x4') surface
 mtd. fluorescent light fixture,
 acrylic prismatic lens, W/2-F32T8
 lamps, 4100°K, CRI=85
 (Minimum)

POWER

General: 1000W (receptacles)
 Emergency: 200W (receptacles)
 Notes: --

COMMUNICATION

ADP: Yes
 Radio: --
 Telephone: Yes
 Intercom: --
 Pub. Addr: --
 Notes: 1. Nurse Call

HEATING, VENTILATING AND AIR CONDITIONING

Dry Bulb Temp Cooling: 25°C (78°F)
 Dry Bulb Temp Heating: 22°C (72°F)
 Minimum % Outside Air: --
 100% Exhaust Air: Yes
 Noise Criteria: NC-40
 Steam: --
 Relative Humidity/Cooling: 50%
 Relative Humidity/Heating: 30%
 Minimum Air Changes/Hr.: 6
 Room Pressure: Negative
 AC Load Lighting: 30 w/sm (2.8 w/sf)
 AC Load-Equipment: 54 w/hr (5 w/hr)
 Number of People: 4
 Special Exhaust: --
 Notes:

PLUMBING AND MEDICAL GASES

Cold Water: Yes
 Hot Water: Yes
 Laboratory Air: --
 Laboratory Vacuum: --
 Sanitary Drain: Yes
 Reagent Grade Water: --
 Medical Air: Yes
 Medical Vacuum: Yes
 Oxygen: --
 Notes:

Equipment Guide List

EGD / Colonoscopy Procedures Room

SYMBOL	QTY	AI	DESCRIPTION
	1	CC	OUTLET, WALL, OXYGEN (PG-18-1, MCS 15491; H-18-3, CS 310-1)
	1	CC	OUTLET, WALL, MEDICAL AIR (PG-18-1, MCS 15491; H-18-3, CS 310-1)
	1	CC	OUTLET, WALL, VACUUM (PG-18-1 MCS 15491; H-18-3. CS 310-1)
	1	CC	VACUUM BOTTLE SLIDE (PG-18-1. MCS 3.5491; H-18-4. SD 336)
			-OR-
	1	CC	COLUMN, TELESCOPING UTILITY, CEILING MOUNTED (PG-18-1, MCS 15491) LOCATED AT HEAD OF TABLE 1219mm TO 1829mm (4' TO 6') FROM THE CENTERLINE AND 610mm TO 1219mm (2' TO 4') TO THE LEFT OF THE OF CENTERLINE OF THE TABLE
			<u>COLUMN CONTAINS THE FOLLOWING:</u>
	2		INLETS, VACUUM (PG-18-1, MCS 15491)
	1		OUTLET, NITROUS OXIDE (PG-18-1, MCS 15491)
	2		OUTLET, OXYGEN (PG-18-1, MCS 15491)
	1		OUTLET, MEDICAL AIR (PG-18-1, MCS 15491)
	1		OUTLET, NITROGEN (PG-18-1, MCS 15491)
	1		INLET, VACUUM, DEDICATED ANESTHESIA GAS EVACUATION (PG-18-1, MCS 15491)
	1		INLET, MASS ATOMIC SPECTROMETER (BLANK OUTLET
<u>NOTE: PROVIDE SPACE POR MEDICAL GAS CYLINDERS STRAPPED TO THE WALL-IF NEEDED.</u>			
	1	VV	HAMPER, SOILED LINEN, WITH HINGED SELF CLOSING TOP, 508mm (20") DIA.
AR		VV	STOOL, SURGICAL
6		VV	CABINET, GLAZED DOORS, SLOPING TOP, 610mm x 1829mm (24" x 72")
1		CF	CABINET,,DRUG STORAGE, DOUBLE LOCKING DOORS, WALL HUNG WITHOUT BASE, 610mm x 330mm x 762mm (24" x 13" x 30")
3		CC	CABINET, WALL ABOVE COUNTER (PG-18-1, MCS 12302)
1		CC	COUNTER, APPROX. 2750mm (9'-0") PLASTIC LAMINATE WITH SINK, 508mm x 457mm x 203mm (20" x 18" x 8") AND CABINETS UNDERNEATH (PG-18-1, MCS 12302)
	1	VV	PC, COMPUTER SYSTEM, WITH KEYBOARD
	1	VV	PRINTER, COMPUTER SYSTEM
	1	CC	RECEPRACLE, ELECTRICAL, QUADRAPLEX, FOR COMPUTER EQUIPMENT ITEMS (PG-18-1, MCS 16140, H-18-3, CS 866-1)
	1	VV	CHAIR, OPERATOR'S, SWIVEL AND ADJUSTABLE HEIGHTS
N-2	1	CF	SINK, CORROSION RESISTING STEEL, WITH END OR CORNER DRAIN OUTLET, 559mm x 406mm x 279mm (22" x 16" x 11") (PG-18-1 & PG-18-6,, MCS 11602);
	1	VV	DISPENSER. SOAP, LIQUID, WALL MOUNTED
	1	VV	DISPENSER, PAPER TOWEL, SURFACE MOUNTED
	1	VV	RECEPTACLE, WASTE, 330mm (13') DIAMETER
	2	VV	WASTE RECEPTACLE, MOBIL, DRY, 508mm (20") DIA.
	1	VV	CART, FOR VCR, APPROX., 914mm x 457mm (36" x 18")

Equipment Guide List

EGD / Colonoscopy Procedures Room (cont.)

SYMBOL	QTY	AI	DESCRIPTION
	1	CC	INTERCOM, STATION (PG-18-11 MCS 16760)
	1	VV	TABLE, EXAMINATION, STAINLESS STEEL, 610mm x 1524mm (24" x 60")
	1	CC	TRACK, CURTAIN CUBICLS, CEILING TYPE, SURFACE MOUNTED (PG-18-1, MCS 10152)
	1	VV	CURTAIN, CUBICL
	1	VC	POWER PEDESTAL
	1	VC	RACK. MOBILE, FOR LIGHTSOURCE AND, ENDOSCOPE INSTRUMENT
	1	VV	CART, MOBILE, INSTRUMENT, 813mm x 406mm (32" x 16")
	2	VV	CART, UTILITY, 457mm x 914mm (18" x 36")
	1	VV	CART, EMERGENCY, "CRASH CART" APPROX., 914mm x 533 mm (36" x 21")
	1	VV	CAUTERY DEVICE, ELECTRIC
	1	VC	MONITOR, VISUAL, 610mm (24") SCREEN MINIMUM, SUSPENDED FROM THE CEILING
	1	CC	OUTLET, WALL, EVACUATION (PG-18-1, MCS 15491, H-06-3, CS 310-1)
	1	CC	OUTLET, INTERCOM (EMPTY CONTUIT SYSTEM) (PG-18-1, MCS 16111)
	1	CC	NURSE CALL, PANEL WITH CORRIDOR SIGNAL LIGHT (PG-18-1, MCS 16761)
	1	VV	ILLUMINATOR, X-RAY, 120 VOLT, 20 AMP, APPROX., 508mm x 1499mm (20" x 59"). 4 IN 1
	1	VV	CLOCK. BATTERY OPERATED
AR	CC	RECEPTACLE. ELECTRICAL, DUPLEX, 120 VOLT, 20 AMP (PG-18-1, MCS 16140; H-18-3, CS 801-3)	

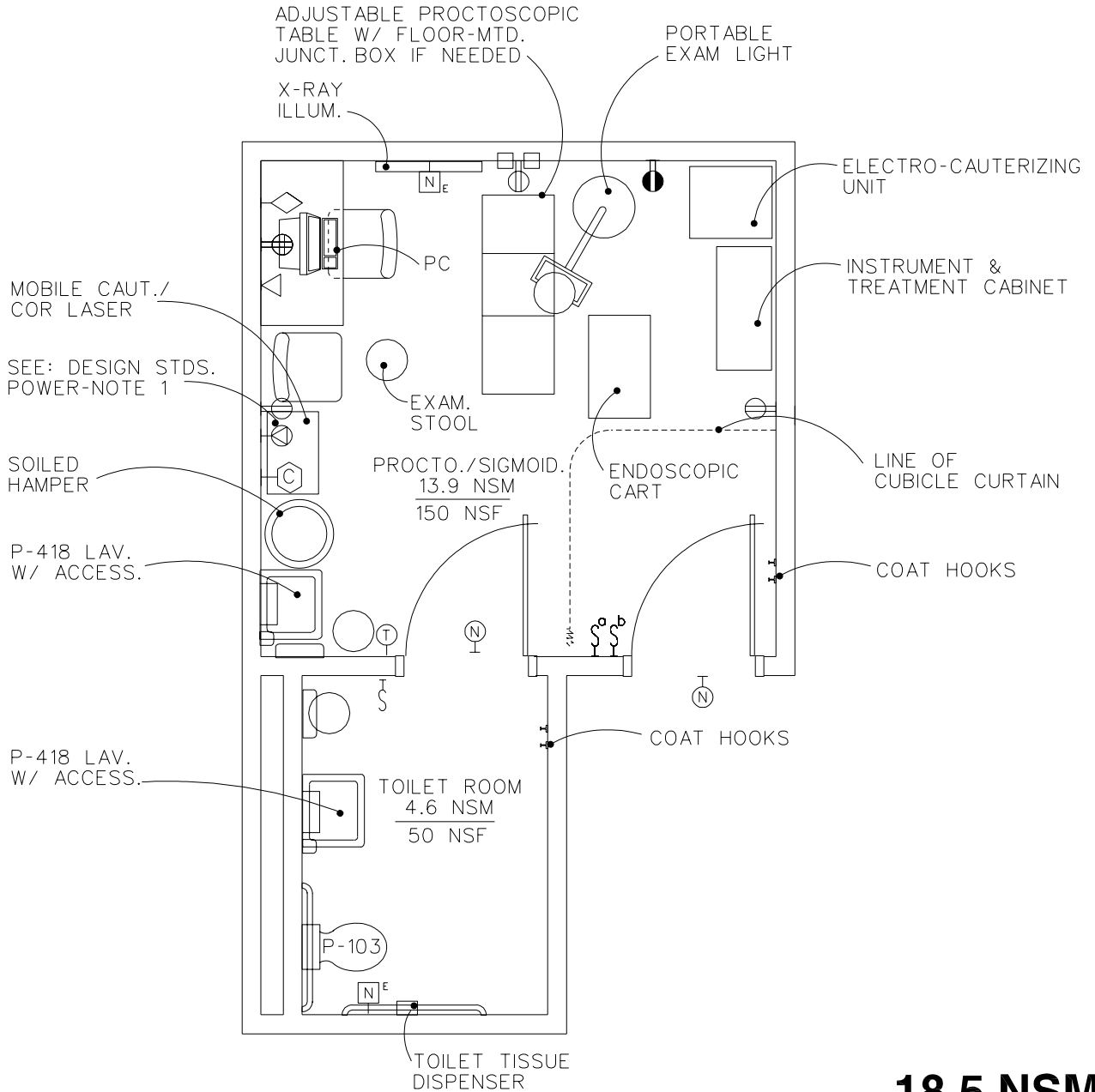
NOTE: THE FOLLOWING EQUIPMENT WILL BE PROVIDED IN THE PATIENT TOILET AREA.

P-103	2	CC	WATER CLOSET, (PG-18-1, MCS 1.5450; EI-03-4, SD 4)
	1	CC	BAR, GRAB FOR WATER CLOSET (PG-18-1, MCS 10800, H-18-4, SD 12, 14B & 14F)
	1	CC	DISPENSER, TOILET TISSUE, DOUBLE ROLL (PG-18-1, MCS 10800; H-18-4, SD 12)
P-418	1	CC	LAVATORY, SENSOR CONTROL (PG-18-1, MCS 15450)
	1	VV	DISPENSER, SOAP, LIQUID, WALL MOUNTED
	1	VV	DISPENSER, PAPER TOWEL, SURFACE MOUNTED
	1	W	RECEPTACLE, WASTE, 330mm (13") DIAMETER
P-701	1	CC	SHOWER, BATH FIXTUR, DETACHABLE, WALL MOUNTED, CONCEALED SUPPLIES (PG-18-1, MCS 15450; H-18-4, SD 13 & 382)
	1	CC	DRAIN, FLOOR (PG-18-1, MCS 15400)
	1	CC	NURSE CALL, PANEL WITH CORRIDOR SIGNAL LIGHT (PG-18-1, MCS 16761)

NOTE: THE FOLLOWING EQUIPMENT WILL BE PROVIDED IN THE GURNEY STORAGE AREA

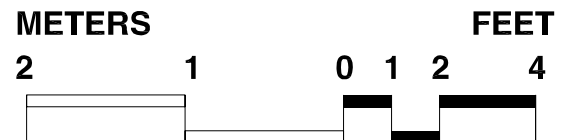
AR	VV	WHEELCHAIR, STANDARD
AR	VV	STRETCHER, APPROX., 762mm x 1981mm (30" X 78")

Screening Proctoscopy/Sigmoidoscopy Room Equipment & Utility Plan

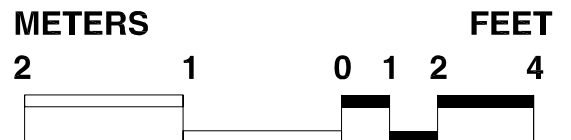
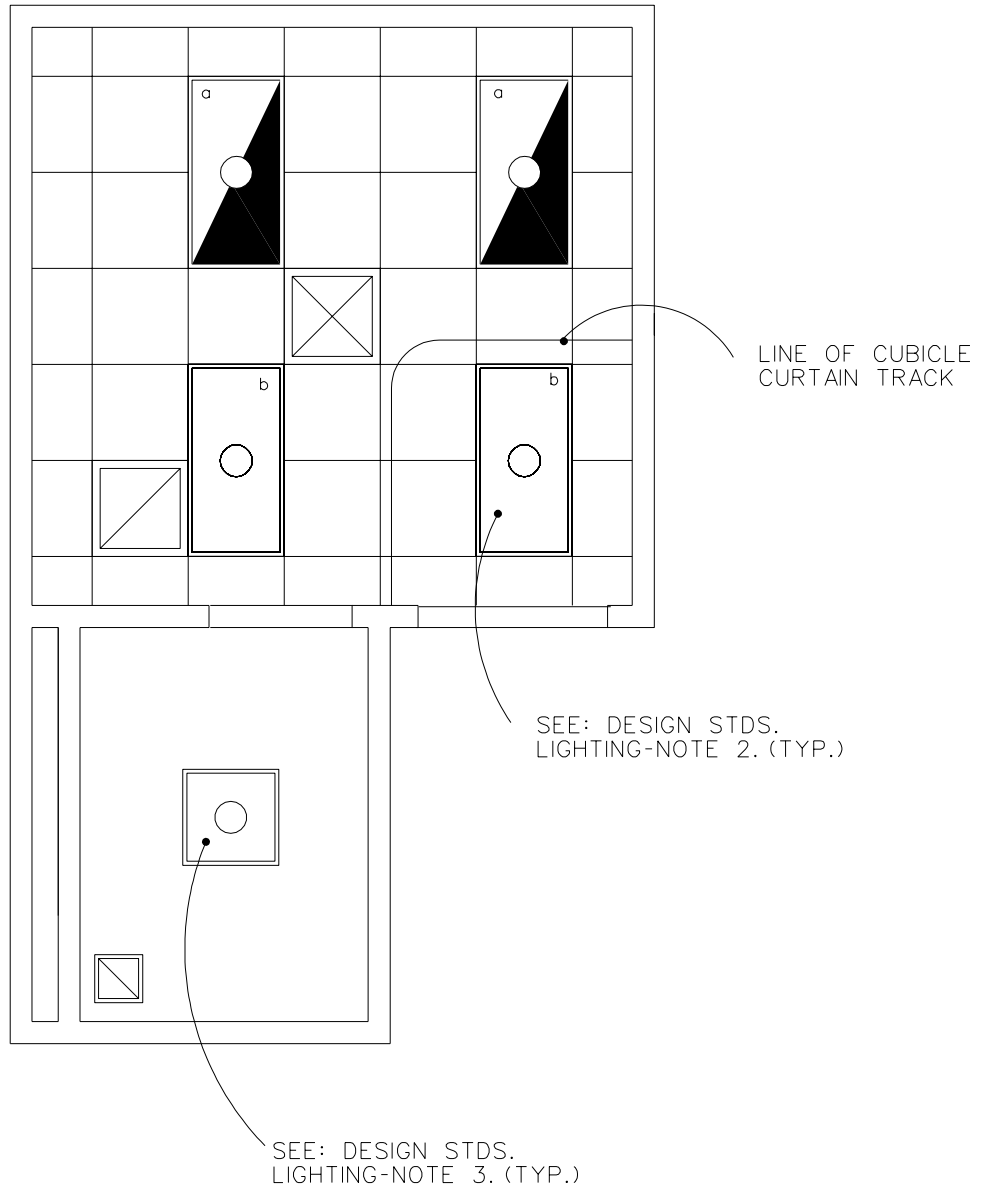


NOTE:
SCOPE WASHING AND
INSTRUMENT STORAGE
WILL BE EXECUTED OUTSIDE
OF THIS SPACE

18.5 NSM
200 NSF



Screening Proctoscopy/Sigmoidoscopy Room Reflected Ceiling Plan



Design Standards

Proctoscopy / Sigmoidoscopy Room

ARCHITECTURAL

Ceiling:	Acoustic Lay-In Ceiling Tile Gyp. Wall Bd. In Toilet Rm.
Ceiling Ht:	2700 mm (9'-0")
Wall Finish:	Paint Ceramic Tile in Toilet Room
Wainscot:	--
Base:	Resilient sheet flooring w/ integral base
Floor Finish:	Resilient sheet flooring Ceramic Tile in Toilet Room
Slab Depr:	--
Notes:	1. 900mm (3'-0") wide entry door.

SPECIAL EQUIPMENT

None

LIGHTING

General:	Procto Rm :100 FC Toilet: 30 FC
Special:	--
Notes:	<ol style="list-style-type: none"> 1. Lighting control by area; switch(es) at room entrance. 2. 600mm x 1200mm (2' x 4') recessed fluorescent light fixture, acrylic prismatic lens, W/3-F32T8 lamps, 3500°K, CRI=75 (minimum) 3. 600mm x 600mm (2' x 2') recessed fluorescent light fixture, acrylic prismatic lens, W/3-FB31 lamps, 3500°K, CRI=75 (minimum)

POWER

General:	1000W (receptacles)
Emergency:	200W (receptacles)
Notes:	1. Special receptacle for laser equipment. (Coordinate with supplier).

COMMUNICATION

ADP:	--
Radio:	--
Telephone:	Yes
Intercom:	--
Pub. Addr:	--
Notes:	1.Nurse Call

HEATING, VENTILATING AND AIR CONDITIONING

Dry Bulb Temp Cooling:	25°C (78°F)
Dry Bulb Temp Heating:	22°C (72°F)
Minimum % Outside Air:	--
100% Exhaust Air:	Yes
Noise Criteria:	NC-40
Steam:	--
Relative Humidity/Cooling:	50%
Relative Humidity/Heating:	30%
Minimum Air Changes/Hr.:	6
Room Pressure:	Negative
AC Load Lighting:	30 w/sm (2.8 w/sf)
AC Load-Equipment:	54 w/sm (5 w/sf)
Number of People:	4
Special Exhaust:	--
Notes:	

PLUMBING AND MEDICAL GASES

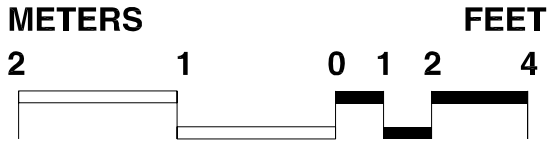
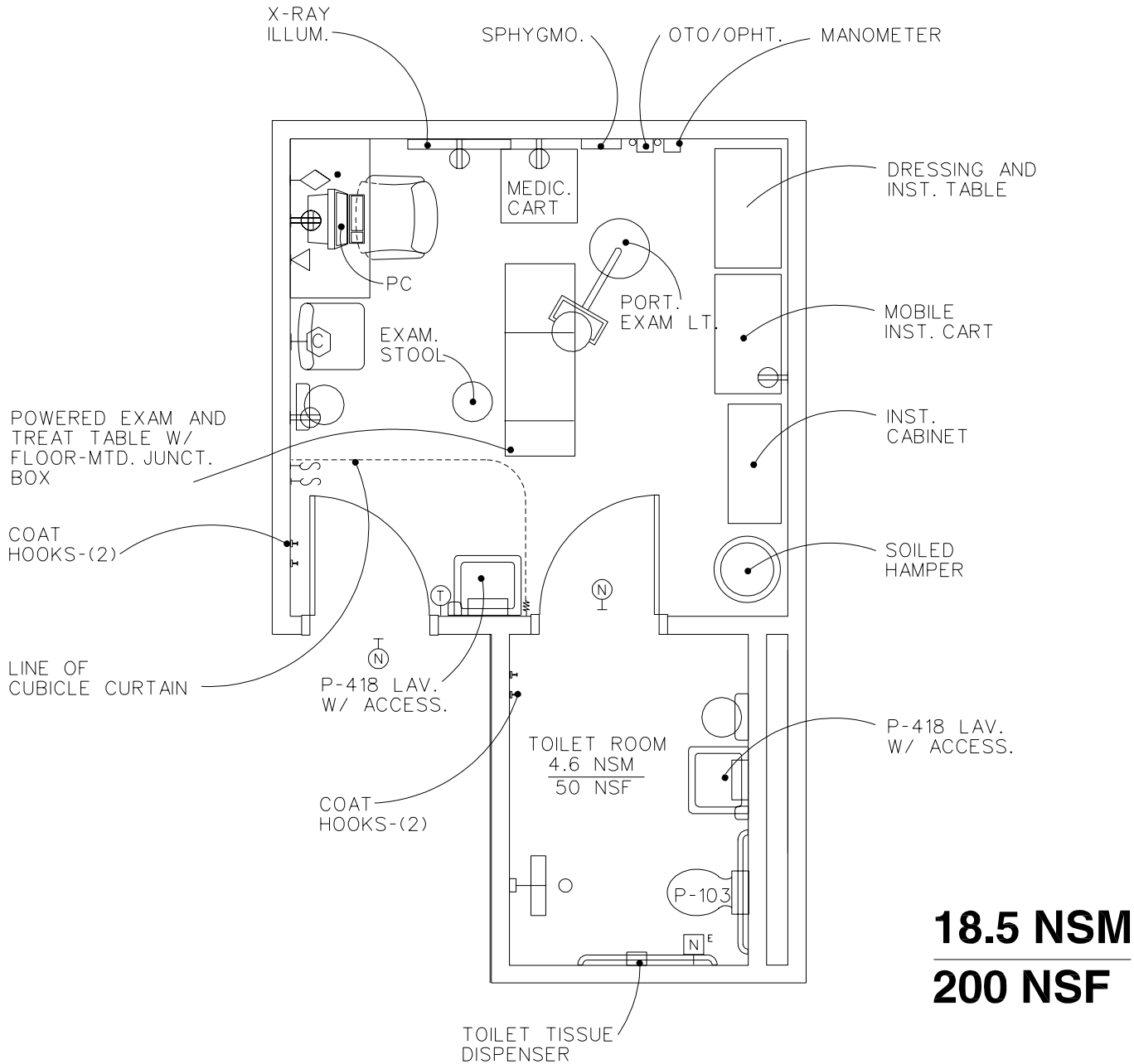
Cold Water:	Yes
Hot Water:	Yes
Laboratory Air:	--
Laboratory Vacuum:	--
Sanitary Drain:	Yes
Reagent Grade Water:	--
Medical Air:	Yes
Medical Vacuum:	Yes
Oxygen:	--
Notes:	1. Potential cold water is required for laser equipment. (Coordinate with equipment supplier.)

Equipment Guide List

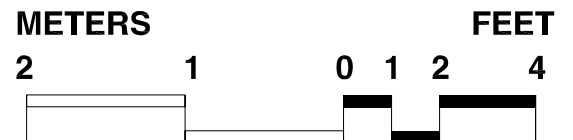
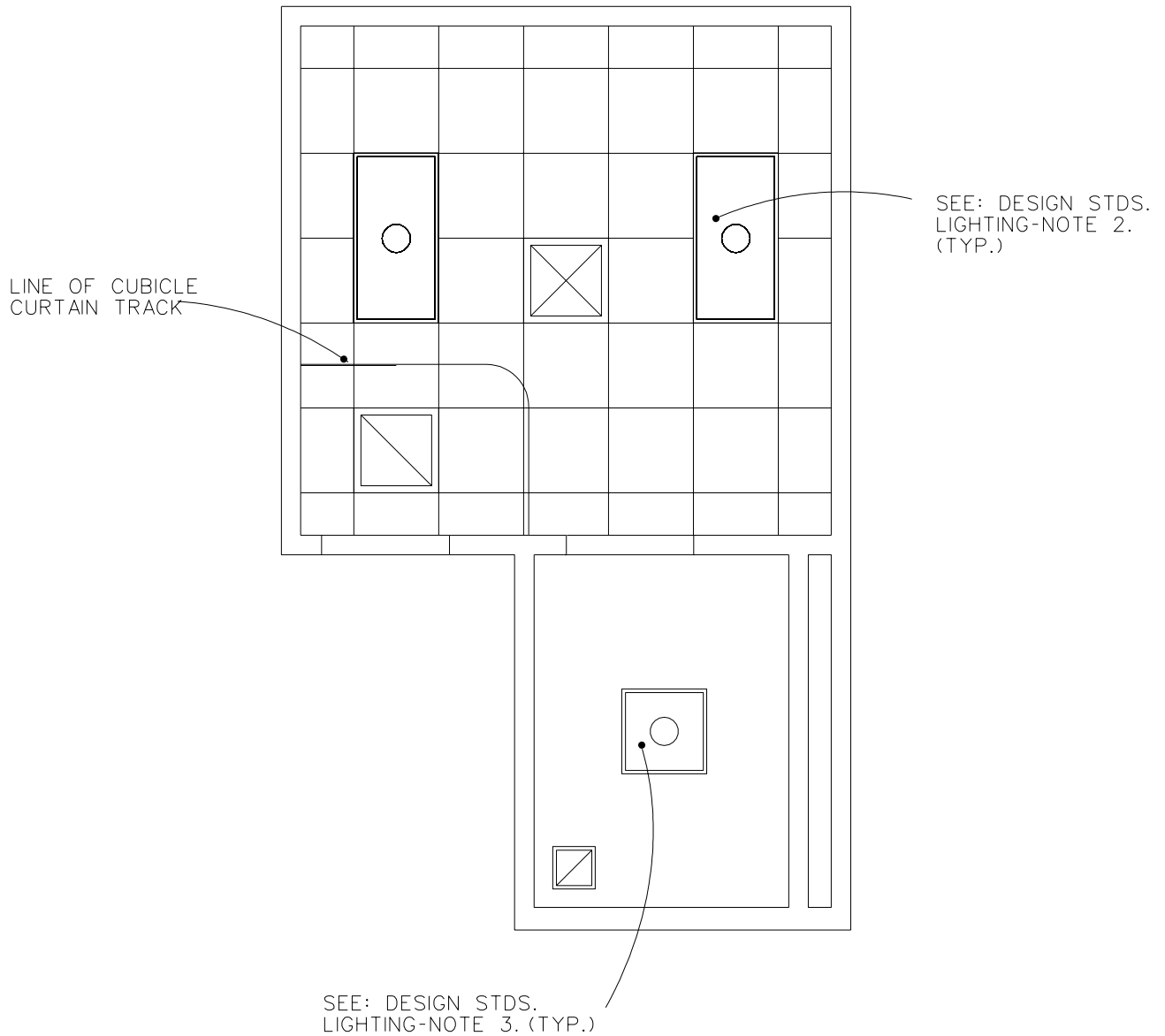
Proctoscopy/Sigmoidoscopy Room

SYMBOL	QTY	AI	DESCRIPTION
P-418	1	CC	LAVATORY, SENSOR CONTROL (PG- 18-1) MCS 15450; VOL. 3 SD 380)
	1	VV	CABINET, INSTRUMENT AND TREATMENT, 36"W x 16"D x 78"H
	AR	VV	CART, ENDOSCOPIC
	1	VV	CURTAIN, CUBICLE
	AR	VV	CHAIR, STRAIGHT, WITHOUT ARMS
	1	VV	CLOCK, BATTERY OPERATED
	1	VV	PC, COMPUTER SYSTEM, WITH KEYBOARD
	1	VV	DESK, SINGLE PEDESTAL, 1200 mm W x 760 mm D x 760 mm H (48"VV x 30"D x 30"H)
	1	VV	DISPENSER, BIFOLD PAPER TOWEL, SURFACE MOUNTED.
	1	VV	DISPENSER, SOAP, LIQUID, WALL MOUNTED
	1	VV	ELECTRO-CAUTERIZING UNIT, MOBILE, APPROX. 535mmW x 600mmD(21"W x 24"D)
	1	VV	HAMPER, SOILED LINEN, WITH HINGED SELF CLOSING TOP, 500 mm (20") DIA.
	AR	VV	HOOK, COAT, WALL MOUNTED
	1	VV	ILLUMINATOR X RAY FILM, 120 VOLTS, 150 WATTS, WALL MOUNTED, INDIVIDUAL SWITCH FOR TWO, 355 mm x 430 mm (14" x 17") RADIOGRAPHS, 790 mm W x 500 mm H (31"VV X 20"H)
	1	VV	LASER, CO2, MOBILE
	AR	VV	LIGHT, EXAMINING, PORTABLE, 120 VOLTS, 20 AMPS, APPROX., 455 mm (18") DIAMETER X 75"H
	1	VV	RECEPTACLE, WASTE, STEP ON TYPE, APPROX. 305 mm (12") DIAMETER
	1	VV	STOOL, EXAMINING, ADJUSTABLE
	1	VV	TABLE, PROCTOSCOPIC, ADJUSTABLE, HYDRAULICALLY OPERATED.

Gastric (Esophageal) Motility Procedure Room Equipment & Utility Plan



Gastric (Esophageal) Motility Procedure Room Reflected Ceiling Plan



Design Standards

Gastric Motility Studies

ARCHITECTURAL

Ceiling:	Acoustic Lay-In Ceiling Tile
Ceiling Ht:	2700 MM (9'-0")
Wall Finish:	Paint
	Ceramic Tile in Toilet Room
Wainscot:	--
Base:	Resilient sheet flooring w/ integral base
	Ceramic Tile in Toilet Room
Floor Finish:	Resilient sheet flooring
	Ceramic Tile in Toilet Room
Slab Depr:	--
Notes:	1. 900mm (3'-0") wide entry door.

SPECIAL EQUIPMENT

None

LIGHTING

General:	50 FC (ambient)/100 FC Task
Special:	--
Notes:	<ol style="list-style-type: none"> Dual-level switching provided 50/10 FC levels. 600 X 1200 MM (2'x4') recessed fluorescent light fixture, acrylic prismatic lens, W/2-F32T8 lamps, 3500°K, CRI=75 (Min.). 600mm x 600mm (2' x 2') recessed fluorescent light fixture, acrylic prismatic lens, W/3-FB31 lamps, 3500°K, CRI=75 (minimum)

POWER

General:	1400W (receptacles); 1000W (dedicated recept./circuit for exam table)
Emergency:	--
Notes:	--

COMMUNICATION

ADP:	Yes
Radio:	--
Telephone:	Yes
Intercom:	--
Pub. Addr:	--
Notes:	--

HEATING, VENTILATING AND AIR CONDITIONING

Dry Bulb Temp Cooling:	25°C (78°F)
Dry Bulb Temp Heating :	22°C (72°F)
Minimum % Outside Air:	--
100% Exhaust Air:	Yes
Noise Criteria:	NC-40
Steam:	--
Relative Humidity/Cooling:	50%
Relative Humidity/Heating:	30%
Minimum Air Changes/Hr.:	8
Room Pressure:	Negative
AC Load Lighting:	19 w/sm (1.8 w/sf)
AC Load-Equipment:	65 w/sm (6 w/sf)
Number of People:	3
Special Exhaust:	Yes
Notes:	--

PLUMBING AND MEDICAL GASES

Cold Water:	Yes
Hot Water:	Yes
Laboratory Air:	--
Laboratory Vacuum:	--
Sanitary Drain:	Yes
Reagent Grade Water:	--
Medical Air:	--
Medical Vacuum:	--
Oxygen:	--
Notes:	--

Equipment Guide List

Gastric Motility Studies

SYMBOL	QTY	AI	DESCRIPTION
P-418	1	CC	LAVATORY, SENSOR CONTROL (PG-18-1, MCS 15450; VOL. 3 SD 380)
	1	VV	CABINET, INSTRUMENT AND TREATMENT, 910mm W x 405mm D x 1980mm H (36"W x 16"0 x 78"H)
	1	VV	CART, MEDICATION, W/IV POLE
	AR	VV	CART, MOBIL, INSTRUMENT, 910mm x 500mm (36" x 20")
	1	VV	CHAIR, ROTARY, WITH ARMS
	AR	VV	CHAIR, STRAIGHT, WITHOUT ARMS
	1	VV	CLOCK, BATTERY OPERATED
	1	VV	PC, COMPUTER SYSTEM, WITH KEYBOARD
	1	VV	DESK, SINGLE PEDESTAL, 1200mm W x 760mm D x 760mm H (48"W x 30"D x 30" H)
	1	VV	DISPENSER, BIFOLD PAPER TOWEL, SURFACE MOUNTED.
	1	VV	DISPENSER, SOAP, LIQUID, WALL MOUNTED
	AR	VV	HAMPER, SOILED LINEN, VANTH HINGED SELF CLOSING TOP 500mm (20") DIAMETER
	AR	VV	HOOK, CLOTHES, WALL MOUNTED
	1	VV	ILLUMINATOR, X-RAY FILM, 120 VOLTS, 150 WATTS, WALL MOUNTED, INDIVIDUAL SWITCH FOR TWO, 355mm x 430mm (14"x 17') RADIOGRAPHS, 790 mm W x 500 mm H (31"W x 20"H)
	AR	VV	LIGHT, EXAMINING, PORTABLE, 120 VOLTS, 20 AMPS APPROX. 455 mm (1 8") DIAMETER x 1905 mm H (75"H)
	1	VV	MANOMETER, ESOPHAGEAL, W/ RECORDER
	1	VV	OPHTHALMOSCOPE, WALL HUNG
	1	VV	OTOSCOPE, WALL HUNG
	1	VV	RECEPTACLE, WASTE, STEP-ON TYPE, APPROX. 305 mm (12") DIAMETER
	1	VV	SPHYGMOMANOMETER, WALL HUNG
	1	VV	STOOL, EXAMINING, ADJUSTABLE
	1	VV	TABLE, INSTRUMENT, DRESSING, CORROSION RESISTING STEEL, 500 mm W x 910 mm L x 890 mm H (20"W x 36"L x 35"H)
	1	VV	TABLE, EXAMINING AND TREATMENT, MOTORIZED

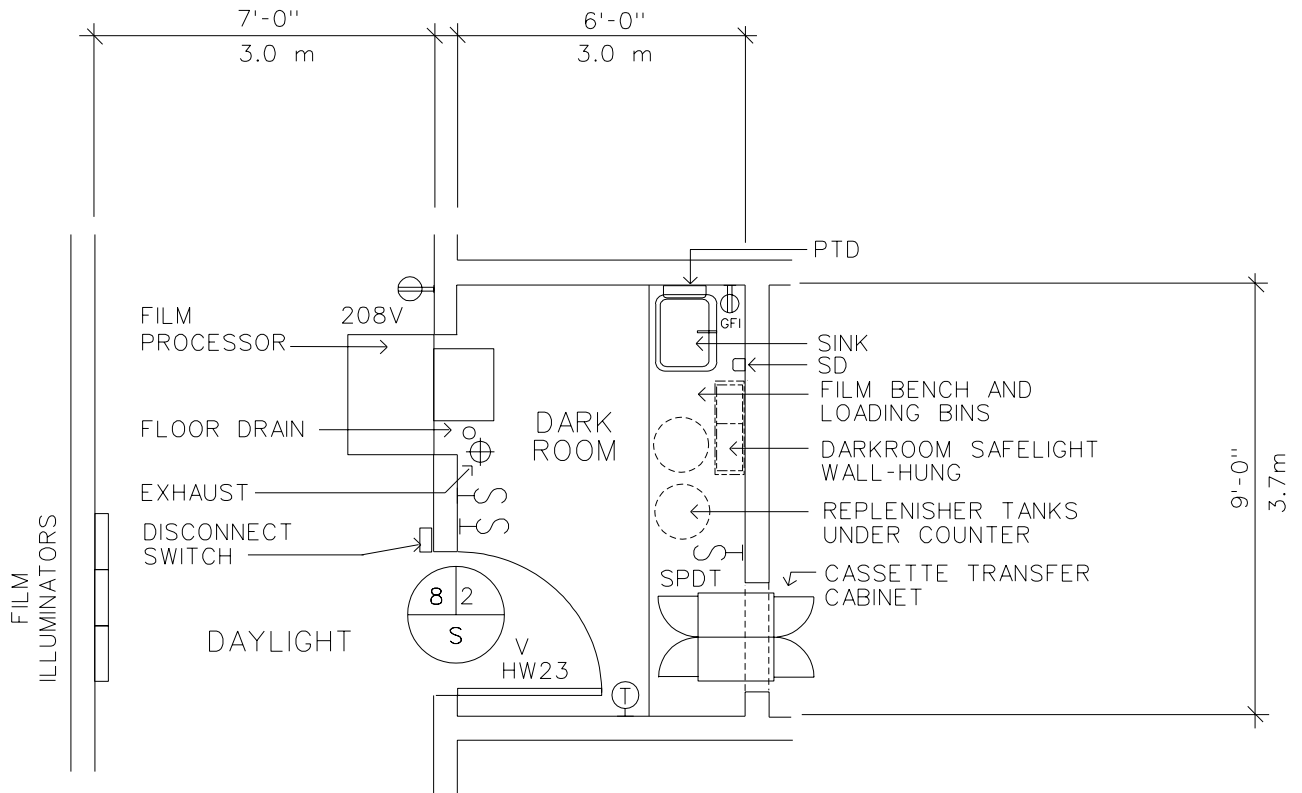
Equipment Guide List

Gastric Motility Studies - Toilet

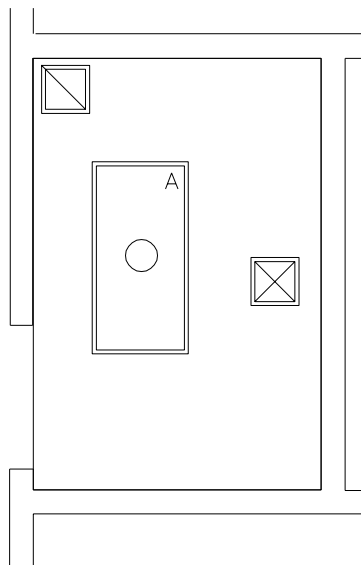
SYMBOL	QTY	AI	DESCRIPTION
P-103	1	CC	WATER CLOSET, WALL HUNG (PG-18-1, MCS 15450; H-18-4)
	1	CC	DISPENSER, TOILET TISSUE, DOUBLE ROLL (PG-18-1, MCS 10800; H-18-4, SD 12)
P-418	1	CC	LAVATORY, SENSOR CONTROL (PG-18-1, MCS 15450; VOL. 3 SD 380)
T45	1	CC	SHELF, CORROSION RESISTING STEEL, 305mm x 127mm (1 2" x 5") (PG-18-1, MCS 10360; H-18-4, SD60H)
	1	VV	DISPENSER, SOAP, LIQUID, WALL MOUNTED
	1	VV	DISPENSER, BIFOLD PAPER TOWEL, SURFACE MOUNTED
	1	VV	RECEPTACLE, WASTE, STEP-ON TYPE, APPROX. 305 mm (12") DIAMETER
	AR	CC	BAR, GRAB FOR WATER CLOSET (PG-18-1, MCS 10800; H-18-4, SD 12)
	2	CC	HOOK, CLOTHES (PG-18-1, MCS 10800)
	1	CC	MIRROR, WHEELCHAIR, 610 mm W x 910 mm H (24"W x 36"H) (PG-18-1, MCS 10800; H-18-4, SD 15)

Equipment & Utility Plan Radiographic Film Processing Room

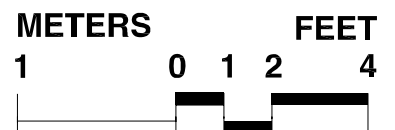
First Draft 3-15-97



Reflected Ceiling Plan



11.1 NSM
120 NSF



Design Standards

Radiographic Film Processing Room

ARCHITECTURAL

Ceiling:	GWB
Ceiling Ht:	2700 MM (9'-0")
Wall Finish:	Paint (SC)
Wainscot:	--
Base:	Welded Seamless Flooring
Floor Finish:	Welded Seamless Flooring
Slab Depr:	--
Notes:	--

SPECIAL EQUIPMENT

None

LIGHTING

General:	0 -10 FC (incandescent)
Special:	Safety Light
Notes:	--

POWER

General:	180W
Emergency:	--
Notes:	--

COMMUNICATION

ADP:	--
Radio:	--
Telephone:	--
Intercom:	--
Pub. Addr:	--
Notes:	--

HEATING, VENTILATING AND AIR CONDITIONING

Dry Bulb Temp Cooling:	25°C (78°F)
Dry Bulb Temp Heating :	22°C (72°F)
Minimum % Outside Air:	100
100% Exhaust Air:	Yes
Noise Criteria:	NC-40
Steam:	--
Relative Humidity/Cooling:	50%
Relative Humidity/Heating:	30%
Minimum Air Changes/Hr.:	8 (SA)
Room Pressure:	Negative
AC Load Lighting:	None
AC Load-Equipment:	81 w/sm (7.5 w/sf)
Number of People:	3
Special Exhaust:	Yes (see note 1)
Notes:	1. 4" round duct for film processor. Ducts require lead shielding.

PLUMBING AND MEDICAL GASES

Cold Water:	Yes
Hot Water:	Yes
Acid Waste:	Yes
Silver Recovery:	Yes
Laboratory Air:	--
Laboratory Vacuum:	--
Sanitary Drain:	Yes
Reagent Grade Water:	--
Medical Air:	--
Medical Vacuum:	--
Oxygen:	--
Notes:	--

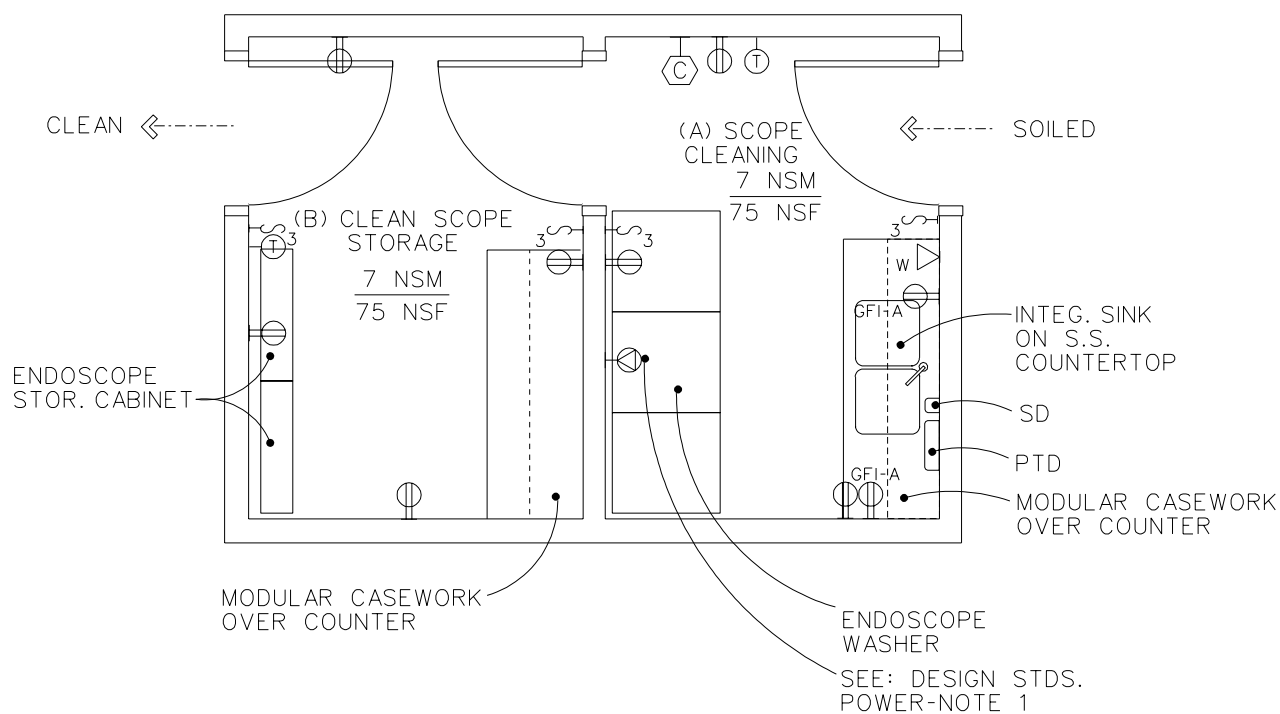
Equipment Guide List

Radiographic Film Processing Room

SYMBOL	QTY	AI	DESCRIPTION
	1	VC	PROCESSOR, FILM. AUTOMATIC, 90 SECOND PROCESSING CYCLE, THRU WALL
	AR	VC	TANK, REPLENISHER, 25 GAL. CAPACITY AND CURBING, 2 FOR EACH PROCESSOR
TOP 616A	1	CF	COUNTER TOP. HIGH PRESSURE PLASTIC LAMINATE, ACID RESISTANT COMPOSITION OVER PLYWOOD OR PARTICLE BOARD CORE. 1-1/4" THICK (PG-18-1 & H-08-6. MCS 11602)
	AR	VV	BENCH, FILM LOADING AND STORAGE BINS
	1	VV	ILLUMINATOR, X-RAY FILM, 120 VOLT. 150 WATTS, WALL MOUNTED, INDIVIDUAL SWITCH FOR TWO, 14" X 17" RADIOGRAPHS. 31"W x 20"H
	1	CC	SAFELIGHT, CEILING TYPE, SWITCH ON WALL (H-18-4. SD E-D-3)
	AR	CC	DOOR, LIGHTPROOF OR LIGHT LOCK DOOR IF SPECIFIED (PG-18-1, MCS 11471)
	1	CC	CASSETTE TRANSFER CABINET. THRU WALL (PG-18-1, MCS 13091; PG-18 4)
P-516	1	CC	SINK, SINGLE BOWL, SELF RIMMING
	1	VV	DISPENSER. SOAP. LIQUID, WALL MOUNTED
	1	VV	DISPENSER. BIFOLD PAPER TOWEL, SURFACE MOUNTED
	AR	CC	RECEPTACLE. ELECTRICAL, DUPLEX, 120 VOLT, 20 AMP (PG-18-1, MCS 16140. H-18-3, CS 801-3)

Scope Cleaning/Clean Storage Equipment & Utility Plan

FIRST DRAFT 3-15-97



NOTE:
THESE ROOMS SHOULD BE ADJACENT TO RECOVERY AND BRONCHOSCOPY ROOMS.

14 NSM

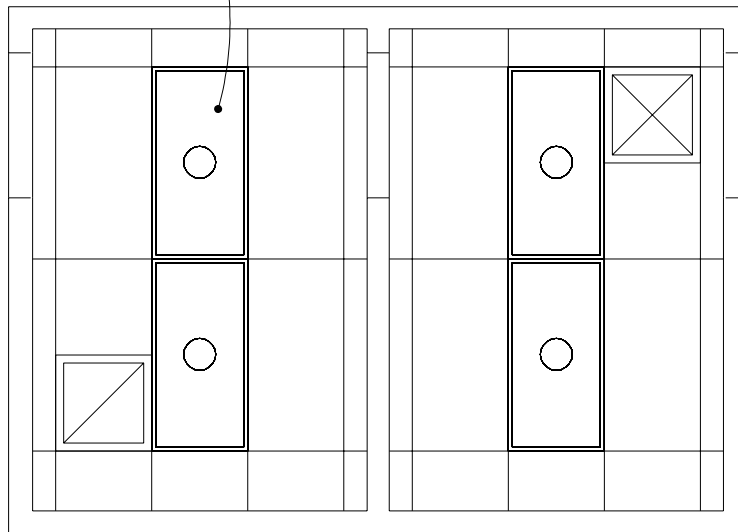
150 NSF



Scope Cleaning/Clean Storage Reflected Ceiling Plan

FIRST DRAFT 3-15-97

SEE: DESIGN STDS.
LIGHTING-NOTE 1 (TYP.)



METERS

2 1

FEET

0 1 2 4



Design Standards

Scope Cleaning / Clean Storage

ARCHITECTURAL

Ceiling:	Acoustical ceiling tile
Ceiling Ht:	2700 MM (9'-0")
Wall Finish:	High build glazed coating
Wainscot:	--
Base:	Welded Seamless Flooring
Floor Finish:	Welded Seamless Flooring
Slab Depr:	--
Notes:	1. 900mm (3'-0") wide entry doors with tempered glass view window.

SPECIAL EQUIPMENT

None

LIGHTING

General:	30 FC
Special:	--
Notes:	1. 600mm x 1200mm (2'x4') recessed fluorescent light fixture, acrylic prismatic lens, W/2-F32T8 lamps, 3500°K, CRI=75 (Min.).

POWER

General:	1800W (Receptacles)
Emergency:	--
Notes:	1. Special receptacle for endoscopy washer, (coordinate with supplier)

COMMUNICATION

ADP:	--
Radio:	--
Telephone:	Yes
Intercom:	--
Pub. Addr:	--
Notes:	--

HEATING, VENTILATING AND AIR CONDITIONING

Dry Bulb Temp Cooling:	25°C (78°F)
Dry Bulb Temp Heating :	22°C (72°F)
Minimum % Outside Air:	--
100% Exhaust Air:	Yes
Noise Criteria:	NC-40
Steam:	--
Relative Humidity/Cooling:	50%
Relative Humidity/Heating:	30%
Minimum Air Changes/Hr.:	Scope Cleaning: 10 Clean Storage: 4
Room Pressure:	Scope Cleaning: Negative Clean Storage: Positive
AC Load Lighting:	Scope Cleaning: 54 w/sm (5 w/sf) Clean Storage: 22 w/sm (2 w/sf)
AC Load-Equipment:	Scope Cleaning: 13 w/sm (1.2 w/sf) Clean Storage: 19 w/sm (1.8 w/sf)
Number of People:	2
Special Exhaust:	--
Notes:	1. Provide counter top exhaust for scope cleaning room.

PLUMBING AND MEDICAL GASES

Cold Water:	Yes
Hot Water:	Yes
Laboratory Air:	--
Laboratory Vacuum:	--
Sanitary Drain:	Yes
Reagent Grade Water:	--
Medical Air:	Yes
Medical Vacuum:	Yes
Oxygen:	Yes
Notes:	1. Sink, drain pipe, waste and vent from the sink located in the scope cleaning room needs to be chemical resistant type.

Equipment Guide List

Scope Cleaning/Clean Storage

SYMBOL	QTY	AI	DESCRIPTION
--------	-----	----	-------------

NOTE: OUTLET, WALL, MEDICAL AIR (PG-18-1, MCS 15491; H-18-3, CS 310-1)

NOTE: OUTLET, WALL, OXYGEN (PG-18-1, MCS 15491; H-18.3, CS 310-1)

NOTE:- OUTLET, WALL VACUUM (PG-18-1, MCS 154 91; H-18-3, CS 310-1)

(A) Scope Cleaning

1	VV	CLOCK, BATTERY OPERATED
1	VV	DISPENSER, BI-FOLD PAPER TOWEL, SURFACE MOUNTED
1	VV	DISPENSER, SOAP, LIQUID, WALL MOUNTED
AR	CF	MODULAR CASEWORK
1	CF	SINK, DOUBLE BOWL, SELF RIMMING, CRS
3	VV	WASHER, ENDOSCOPE

(B) Clean Scope Storage

AR	CF	MODULAR CASEWORK
AR	VV	CABINET, ENDOSCOPE STORAGE