

Section 6

Design Guide Plates and Data Sheets Operating Suite & Radiographic Suite

GUIDE PLATE SERIES

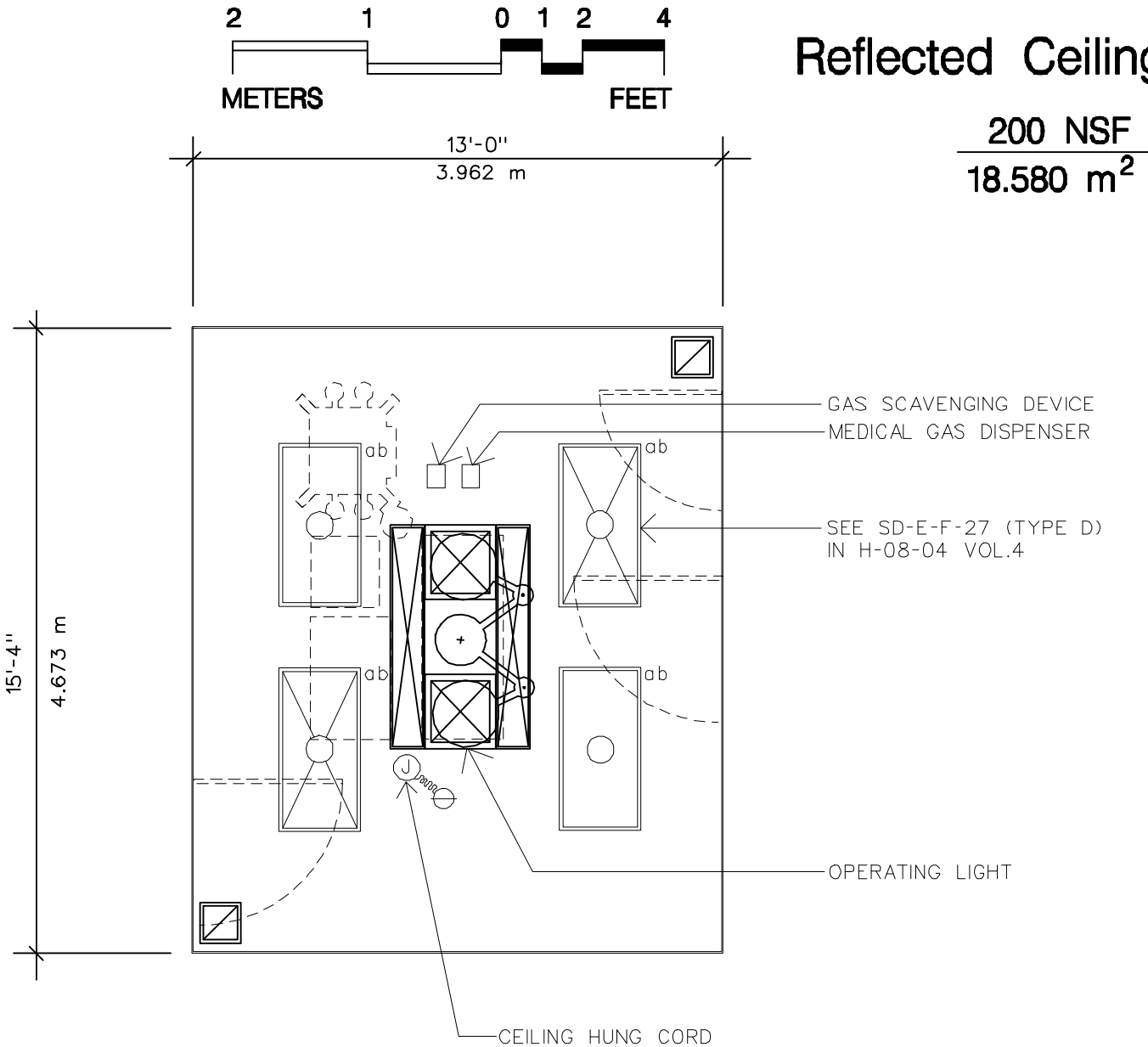
- 6-1 Operating Room
 - Reflected Ceiling Plan
 - Equipment and Utility Plan
 - Design Standards
 - Equipment Guide List
- 6-2 Animal Surgical Preparation Room
 - Equipment and Utility Plan
 - Design Standards
 - Equipment Guide List
- 6-3 Scrub and Gown Room
 - Equipment and Utility Plan
 - Design Standards
 - Equipment Guide List
- 6-4 Surgical Work Room and Supply
 - Equipment and Utility Plan
 - Design Standards
 - Equipment Guide List

GUIDE PLATE SERIES

- 6-5 Post Operative Intensive Care Room
 - Equipment and Utility Plan
 - Design Standards
 - Equipment Guide List
- 6-6 Radiographic Suite
 - Equipment and Utility Plan
 - Design Standards
 - Equipment Guide List
- 6-7 Control Booth
 - Design Standards
 - Equipment Guide List
- 6-8 Dark Room
 - Design Standards
 - Equipment Guide List

Operating Room

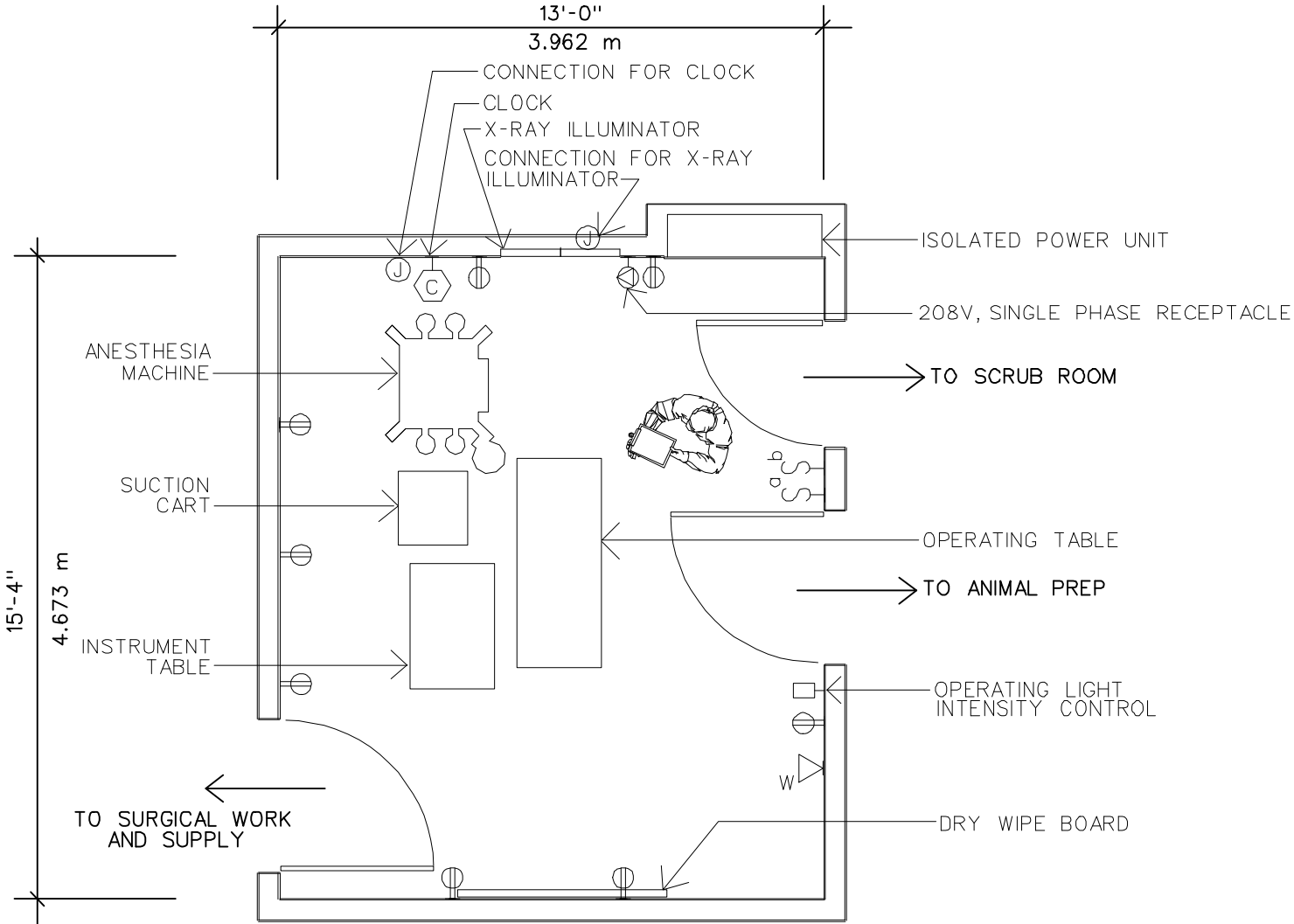
Reflected Ceiling Plan



200 NSF
 18.580 m²

NOTE: SURVIVAL AND NONSURVIVAL OPERATING ROOMS DESIGNED THE SAME TO BE USED INTERCHANGABLY

26 February 1993

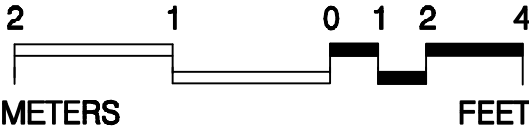


NOTE: SEE SURGICAL SUITE LAYOUT IN SECTION 3

NOTE: SURVIVAL AND NONSURVIVAL OPERATING ROOMS DESIGNED THE SAME TO BE USED INTERCHANGABLY

200 NSF
18.580 m²

Operating Room



Equipment & Utility Plan

Operating Room

Design Standards

ARCHITECTURAL

Floor Area	200 NSF	Wall Finish	CMU (SC)
Ceiling	PL	Wainscot	-
Ceiling Height	9'-6"	Base	ERF
Slab Depression	-	Floor Finish	ERF
Notes:		Lead Lining	-

SPECIAL EQUIPMENT

NONE

ELECTRICAL

Lighting

General	100 FC, 5.0 W/SF*
Special	**
Emergency	50% GEN FLUOR

Notes:

*COLOR CORRECTED FLUOR LAMPS

** (1) SURGICAL LIGHT, 2 HEADS

*** (1) CLG CORD

Power

General	1440 W
Special	720 W***
Emergency	50%

COMMUNICATIONS

Telephone	WALL MTD	ADP	EMPTY CONDUIT
Intercom	PART OF TELEPHONE	Radio	-
Public Address	-	Other	-

Notes:

HEATING, VENTILATING AND AIR CONDITIONING

AC Load Lights	6.0 W/SF
AC Load Equipment	16.0 W/SF*
Number of People	6
Noise Criteria	NC-40
Room Pressure	POSITIVE**
Dry Bulb Temp Cooling (F)	73
Dry Bulb Temp Heating (F)	73
Minimum Air Changes per Hour	15 (SA)
Minimum % Outside Air	100
100% Exhaust Air	YES
Special Exhaust	-
Steam	-
Relative Humidity - Cooling	50 %
Relative Humidity - Heating	50 %

Notes:

* OPERATING LIGHT INCLUDED IN EQUIPMENT LOAD

** PROVIDE OPERATING ROOM WITH HIGHER ROOM POSITIVE PRESSURE THAN ADJACENT ANIMAL SURGICAL PREP ROOM, SCRUB AND GOWN ROOM, AND SURGICAL WORK ROOM

PLUMBING AND MEDICAL GASES

Sanitary Drain	-	Cold Water	-
Acid Waste	-	Hot Water	-
Silver Recovery	-	Reagent Water	-
Medical Air	YES	Laboratory Air	-
Medical Vacuum	YES	Laboratory Vacuum	-
Oxygen	YES	Fuel Gas	-
Nitrous Oxide	YES	Anesthesia Evac	YES

Notes:

Operating Room -- Survival Surgery

Equipment Guide List

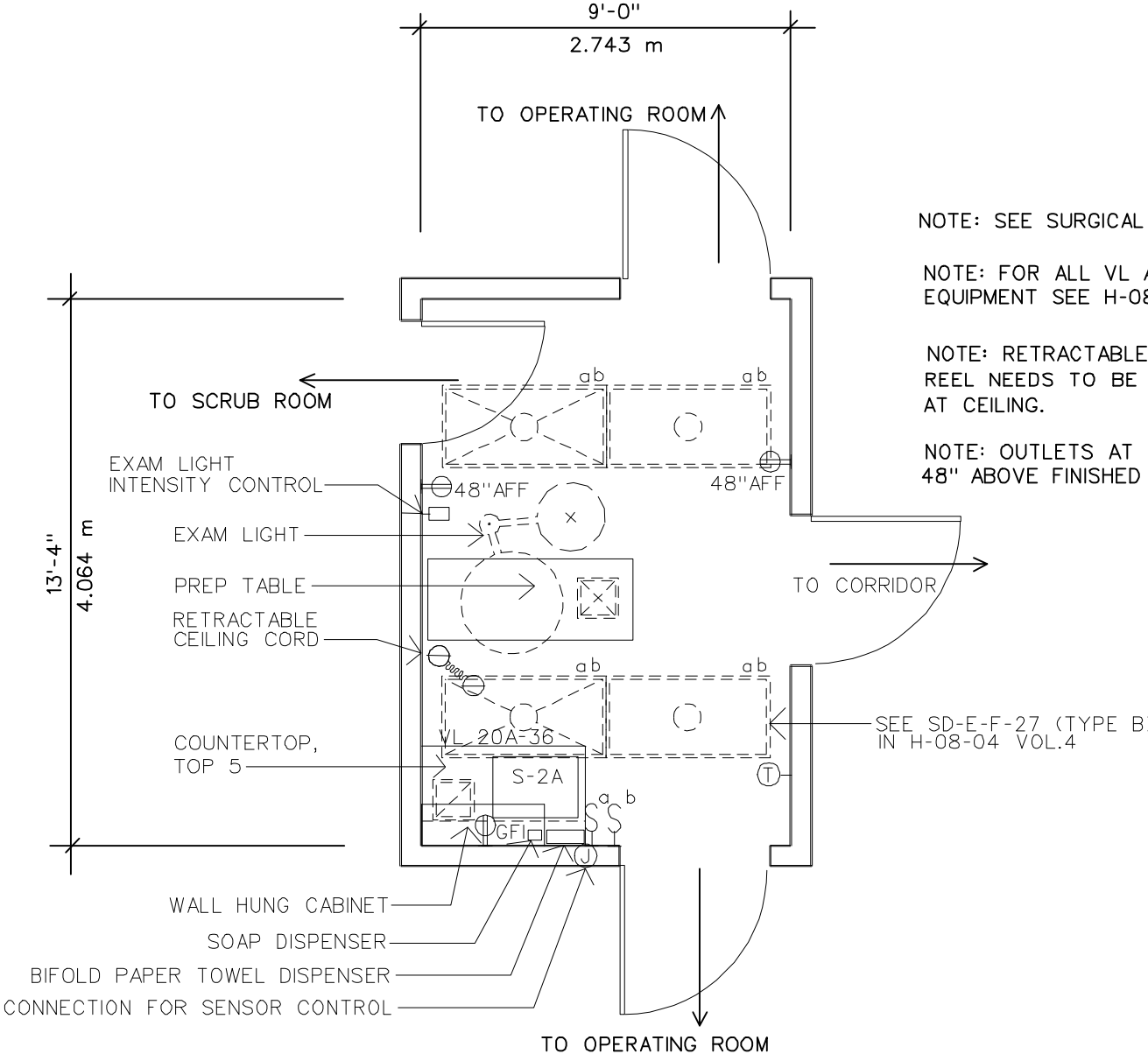
SYMBOL	QTY	AI	DESCRIPTION
			NOTE: CONSTRUCTION TO COMPLY WITH NFPA 99, CHAPTER 3.
			THE FOLLOWING EQUIPMENT IS BASED ON ONE OPERATING TABLE PER ROOM:
	1	CC	ISOLATED POWER UNIT PROVIDES ISOLATED ELECTRICAL POWER, INCLUDES LINE ISOLATION MONITOR, ISOLATION TRANSFORMER AND CIRCUIT BREAKERS (DETAILS AVAILABLE FROM ELECTRICAL SERVICE)
	1	VV	TABLE, OPERATING, STAINLESS STEEL, VARIABLE POSITION, HYDRAULIC LIFT
	1	VV	STAND, IV, MOBILE
	1	CF	LIGHT, MAJOR SURGICAL, DUAL LIGHT WITH SINGLE POINT SUSPENSION AND VARIABLE INTENSITY CONTROLS (H-08-1, MCS 16515; H-08-4, SD E-D-9)
	1	CC	MEDICAL GAS DISPENSER, CEILING MOUNTED, WITH AIR, OXYGEN AND NITROUS OXIDE RETRACTABLE HOSE (H-08-1, MCS 15491; H-08-4, SD 335)
	1	CC	GAS SCAVENGING DEVICE, CEILING MOUNTED (H-08-1, MCS 15491)
	1	VV	MACHINE, ANESTHESIA, PORTABLE
	1	VV	CART, SUCTION, PORTABLE
	4	CC	CORD, ELECTRIC, CEILING HUNG, 120 VOLT, 20 AMP (H-08-1, MCS 16140)
AR		CC	OUTLET, ELECTRICAL, DUPLEX, 120 VOLT, 20 AMP, CEILING MOUNTED, FOR CEILING HUNG CORD (H-08-1, MCS 16140)
AR		VV	TABLE, INSTRUMENT, ADJUSTABLE HEIGHT, PORTABLE
AR		VV	ILLUMINATOR, X-RAY, 14" X 17", WALL MOUNTED, 120 VOLT, 20 AMP
	1	VV	BOARD, DRY WIPE, WHITE PORCELAIN, WALL HUNG WITH, 2" MARKER RAIL, APPROX. 72"W X 48"H, 60"W X 36"H OR 48"W X 48"H
	1	CC	CLOCK, ELECTRIC WITH SWEEP SECOND HAND, RECESSED (H-08-1, MCS 10360)
	1	CC	OUTLET, ELECTRICAL, RECESSED, 120 VOLT, 20 AMP, FOR CLOCK
	1	CC	OUTLET, ELECTRICAL, 208 VOLT, 30 AMP, SINGLE PHASE, FOR LASERS
AR		CC	RECEPTACLE, ELECTRICAL, DUPLEX, 120 VOLT, 20 AMP (H-08-1, MCS 16140; H-08-3, CS 801-3)

Operating Room -- Terminal Surgery

Equipment Guide List

SYMBOL	QTY	AI	DESCRIPTION
	1	CC	ISOLATED POWER UNIT PROVIDES ISOLATED ELECTRICAL POWER, INCLUDES LINE ISOLATION MONITOR, ISOLATION TRANSFORMER AND CIRCUIT BREAKERS (DETAILS AVAILABLE FROM ELECTRICAL SERVICE)
	1	VV	TABLE, OPERATING, STAINLESS STEEL, VARIABLE POSITION, HYDRAULIC LIFT
	1	VV	STAND, IV, MOBILE
	1	CF	LIGHT, MAJOR SURGICAL, DUAL LIGHT WITH SINGLE POINT SUSPENSION AND VARIABLE INTENSITY CONTROLS (H-08-1, MCS 16515; H-08-4, SD E-D-9)
	1	CC	MEDICAL GAS DISPENSER, CEILING MOUNTED, WITH AIR, OXYGEN AND NITROUS OXIDE RETRACTABLE HOSE (H-08-1, MCS 15491; H-08-4, SD 335)
	1	CC	GAS SCAVENGING DEVICE, CEILING MOUNTED (H-08-1, MCS 15491)
	1	VV	MACHINE, ANESTHESIA, PORTABLE
	1	VV	CART, SUCTION, PORTABLE
AR		CC	CORD, ELECTRIC, CEILING HUNG, 120 VOLT, 20 AMP (H-08-1, MCS 16140)
AR		CC	OUTLET, ELECTRICAL, DUPLEX, 120 VOLT, 20 AMP, CEILING MOUNTED, FOR CEILING HUNG CORD (H-08-1, MCS 16140)
AR		VV	TABLE, INSTRUMENT, ADJUSTABLE HEIGHT, PORTABLE
AR		VV	ILLUMINATOR, X-RAY, 14" X 17", WALL MOUNTED, 120 VOLT, 20 AMP
AR		VV	SPECIAL MONITORING INSTRUMENTATION
	1	VV	BOARD, DRY WIPE, WHITE PORCELAIN, WALL HUNG WITH, 2" MARKER RAIL, APPROX. 72"W X 48"H, 60"W X 36"H OR 48"W X 48"H
	1	CC	CLOCK, ELECTRIC WITH SWEEP SECOND HAND, RECESSED (H-08-1, MCS 10360)
	1	CC	OUTLET, ELECTRICAL, RECESSED, 120 VOLT, 20 AMP, FOR CLOCK
AR		CC	RECEPTACLE, ELECTRICAL, DUPLEX, 120 VOLT, 20 AMP (H-08-1, MCS 16140; H-08-3, CS 801-3)

26 February 1993



NOTE: SEE SURGICAL SUITE LAYOUT IN SECTION 3

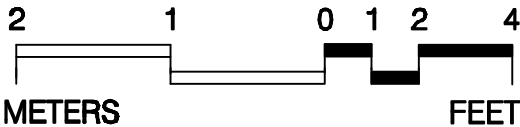
NOTE: FOR ALL VL AND S EQUIPMENT SEE H-08-06

NOTE: RETRACTABLE CEILING CORD TAKE UP REEL NEEDS TO BE STRUCTURALLY SUPPORTED AT CEILING.

NOTE: OUTLETS AT COUNTER LOCATION ARE 48" ABOVE FINISHED FLOOR

120 NSF
11.148 m²

Animal Surgical Preparation Room



Equipment & Utility Plan

Animal Surgical Preparation Room

Design Standards

ARCHITECTURAL

Floor Area	120 NSF	Wall Finish	CMU (SC)
Ceiling	PCP	Wainscot	-
Ceiling Height	9'-0"	Base	ERF
Slab Depression	-	Floor Finish	ERF
Notes:		Lead Lining	-

SPECIAL EQUIPMENT

NONE

ELECTRICAL

Lighting

General	100 FC, 5.0 W/SF*
Special	**
Emergency	50% GEN FLUOR

Notes:

*COLOR CORRECTED FLUOR LAMPS

** (1) SURGICAL LAMP, SINGLE HEAD

Power

General	700 W
Special	-
Emergency	-

COMMUNICATIONS

Telephone	WALL MTD	ADP	-
Intercom	PART OF TELEPHONE	Radio	-
Public Address	-	Other	-

Notes:

HEATING, VENTILATING AND AIR CONDITIONING

AC Load Lights	6.7 W/SF
AC Load Equipment	9.2 W/SF*
Number of People	3
Noise Criteria	NC-40
Room Pressure	POSITIVE
Dry Bulb Temp Cooling (F)	78
Dry Bulb Temp Heating (F)	72
Minimum Air Changes per Hour	4 (SA)
Minimum % Outside Air	100
100% Exhaust Air	YES
Special Exhaust	-
Steam	-
Relative Humidity - Cooling	50 %
Relative Humidity - Heating	30 %

Notes:

*EXAM LIGHT INCLUDED AS EQUIPMENT LOAD

PLUMBING AND MEDICAL GASES

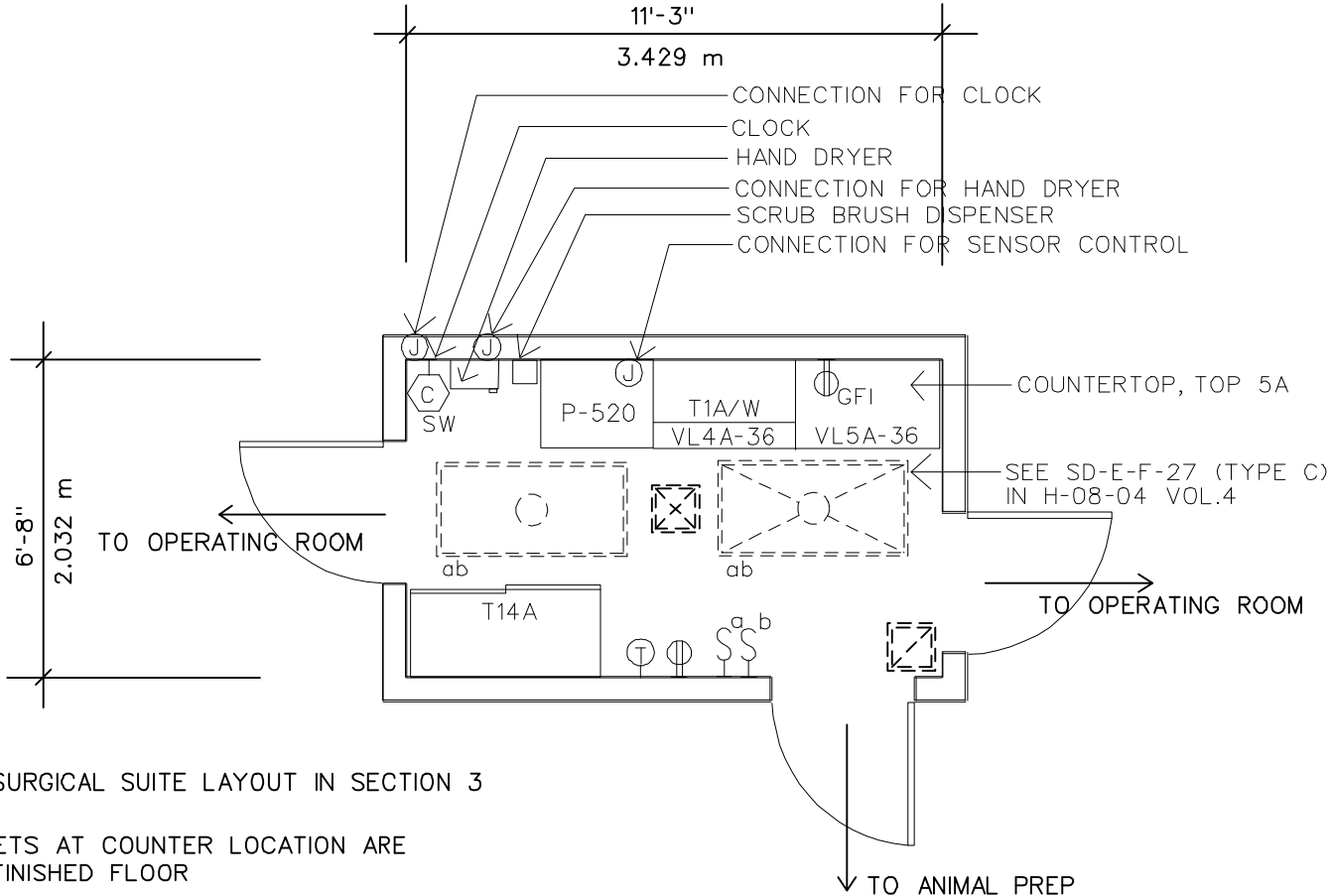
Sanitary Drain	YES	Cold Water	YES
Acid Waste	-	Hot Water	YES
Silver Recovery	-	Reagent Water	-
Medical Air	-	Laboratory Air	-
Medical Vacuum	-	Laboratory Vacuum	-
Oxygen	-	Fuel Gas	-
Nitrous Oxide	-	Anesthesia Evac	-

Notes:

Animal Surgical Preparation Room

Equipment Guide List

SYMBOL	QTY	AI	DESCRIPTION
	1	VV	TABLE, PREP, SIZE AS REQUIRED
	1	CF	LIGHT, EXAM, SINGLE LIGHTHEAD, CEILING MOUNTED, SWIVEL ARM, ADJUSTABLE INTENSITY, 120 VOLT, 20 AMP (H-08-1, MCS 16515)
	1	CC	RETRACTABLE CEILING CORD, (NEAR EXAM LIGHT) 120 VOLT, 20 AMP (H-08-1, MCS 16140; H-08-3, CS 801-3)
	1	CC	OUTLET, ELECTRICAL, DUPLEX, 120 VOLT, 20 AMP, CEILING MOUNTED, FOR RETRACTABLE CEILING CORD (H-08-1, MCS 16140)
TOP 5	AR	CF	COUNTERTOP, CORROSION RESISTING (STAINLESS) STEEL, RAISED RIM, WITH INTEGRAL SINK AND SPLASHBACKS (H-08-1 & H-08-6, MCS 11602)
S-2A	1	CF	SINK, CORROSION RESISTING (STAINLESS) STEEL, WITH END OR CORNER DRAIN OUTLET, WITH OR WITHOUT DRAINBOARD AND SENSOR CONTROL, 25" X 18" X 16" DEEP (H-08-1 & H-08-6, MCS 11602)
VL20/20A	1	CF	CABINET, UNDERCOUNTER, SINK UNIT, 2 HINGED PANEL DOORS, AVAILABLE WIDTHS 30", 36", 42", 48"; DEPTH 22"; HEIGHTS 31", 25", FOR FLOOR MOUNTED ADD 5" TOE BASE (H-08-1 & H-08-6, MCS 12345)
	1	VV	CABINET, WALL HUNG (WITH LOCK) 36"W X 12"D X 30"H
	1	VV	DISPENSER, SOAP, LIQUID, WALL MOUNTED
	1	VV	DISPENSER, BIFOLD PAPER TOWEL, SURFACE MOUNTED
	AR	CC	RECEPTACLE, ELECTRICAL, DUPLEX, 120 VOLT, 20 AMP (H-08-1, MCS 16140; H-08-3, CS 801-3)
	1	CC	RECEPTACLE, ELECTRICAL, DUPLEX, 120 VOLT, 20 AMP, WITH GROUND FAULT INTERRUPTER (H-08-1, MCS, 16140; H-08-3, CS 801-3)



NOTE: SEE SURGICAL SUITE LAYOUT IN SECTION 3

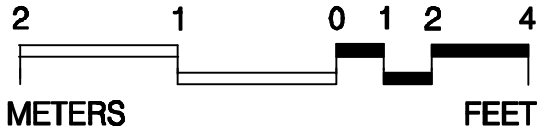
NOTE: OUTLETS AT COUNTER LOCATION ARE 48" ABOVE FINISHED FLOOR

NOTE: FOR ALL VL EQUIPMENT SEE H-08-06

NOTE: FOR ALL T AND P EQUIPMENT SEE H-08-04 VOL.1

75 NSF
6.967 m²

Scrub and Gown Room



Equipment & Utility Plan

Scrub and Gown Room

Design Standards

ARCHITECTURAL

Floor Area	75 NSF	Wall Finish	CMU (SC)
Ceiling	PCP	Wainscot	-
Ceiling Height	9'-0"	Base	ERF
Slab Depression	-	Floor Finish	ERF
Notes:		Lead Lining	-

SPECIAL EQUIPMENT

NONE

ELECTRICAL

Lighting

General	70 FC, 3.5 W/SF
Special	-
Emergency	50% GEN FLUOR

Notes:

Power

General	360 W
Special	*
Emergency	-

*HAND DRYER: 20 A, 120 V; SENSOR CONTROL: 1 A, 120 V

COMMUNICATIONS

Telephone	-	ADP	-
Intercom	-	Radio	-
Public Address	-	Other	-

Notes:

HEATING, VENTILATING AND AIR CONDITIONING

AC Load Lights	4.0 W/SF
AC Load Equipment	6.4 W/SF
Number of People	2
Noise Criteria	NC-40
Room Pressure	POSITIVE
Dry Bulb Temp Cooling (F)	78
Dry Bulb Temp Heating (F)	72
Minimum Air Changes per Hour	4 (SA)
Minimum % Outside Air	100
100% Exhaust Air	YES
Special Exhaust	-
Steam	-
Relative Humidity - Cooling	50 %
Relative Humidity - Heating	30 %

Notes:

PLUMBING AND MEDICAL GASES

Sanitary Drain	YES	Cold Water	YES
Acid Waste	-	Hot Water	YES
Silver Recovery	-	Reagent Water	-
Medical Air	-	Laboratory Air	-
Medical Vacuum	-	Laboratory Vacuum	-
Oxygen	-	Fuel Gas	-
Nitrous Oxide	-	Anesthesia Evac	-

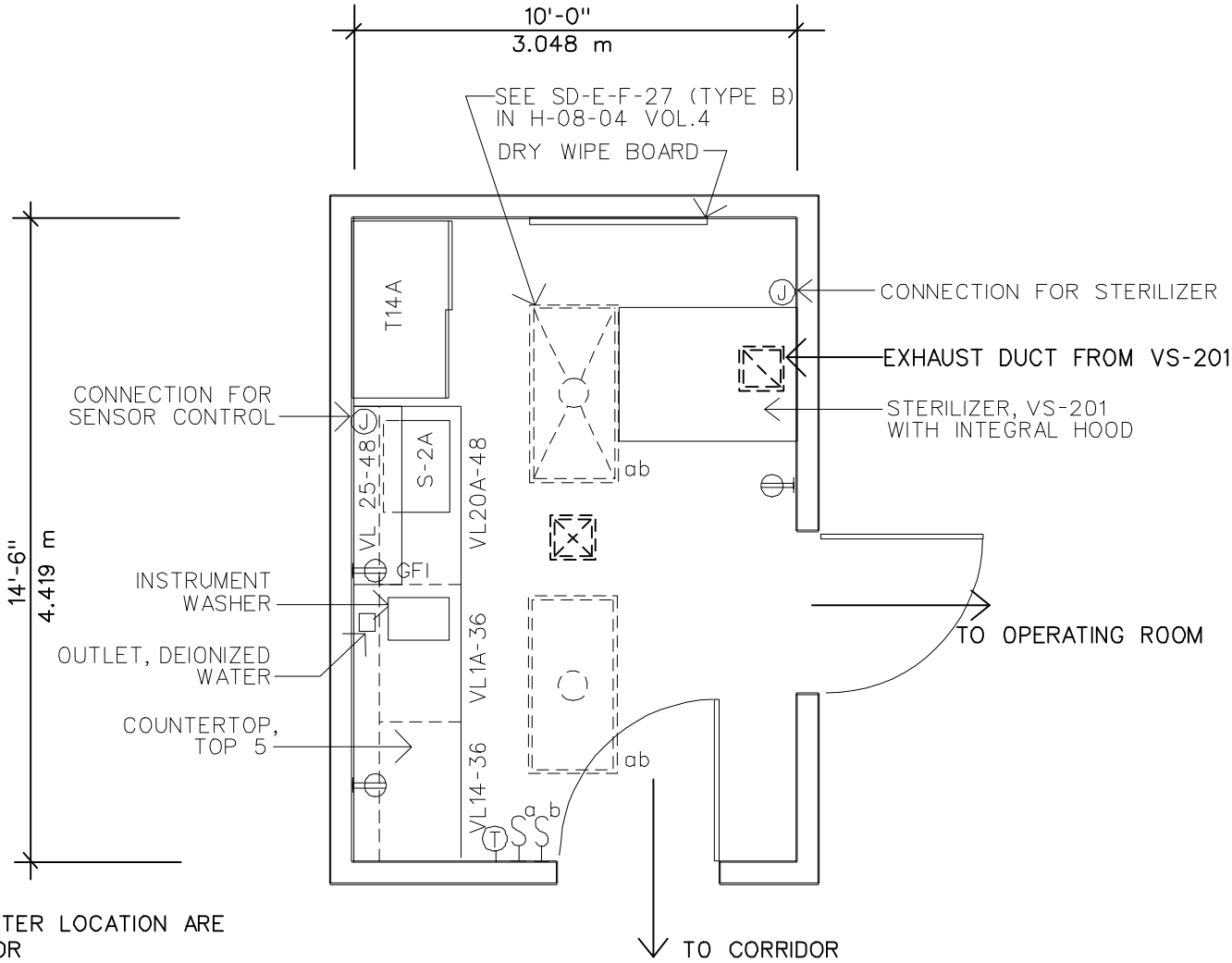
Notes:

Scrub and Gown Room

Equipment Guide List

SYMBOL	QTY	AI	DESCRIPTION
P-520	AR	CC	SINK, SURGEONS, SCRUB-UP, SENSOR CONTROL (H-08-1, MCS 15450; H-08-4, SD 4)
	2	VV	DISPENSER, BRUSH, SCRUB, DISPOSABLE
	2	CC	DRYER, HAND, FORCED AIR, TOUCHLESS TYPE, 120 VOLT, 20 AMP (H-08-1, MCS 10800)
TOP 5A	AR	CF	COUNTERTOP, CORROSION RESISTING (STAINLESS) STEEL, 1-1/4" THICK (H-08-1 & H-08-6, MCS 11602)
VL4/4A	1	CF	CABINET, UNDERCOUNTER, WITH 2 DRAWERS, 2 HINGED DOORS AND 1 ADJUSTABLE SHELF, AVAILABLE WIDTHS 30", 36", 48"; DEPTH 22"; HEIGHTS 31", 25", FOR FLOOR MOUNTED ADD 5" TOE BASE (H-08-1 & H-08-6, MCS 12345)
VL5/5A	1	CF	CABINET, UNDERCOUNTER, WITH 4/3 DRAWERS, 1 HINGED DOOR AND 2/1 ADJUSTABLE SHELVES, AVAILABLE WIDTHS 36", 48"; DEPTH 22"; HEIGHTS 31", 25", FOR FLOOR MOUNTED ADD 5" TOE BASE (H-08-1 & H-08-6, MCS 12345)
T1A/W	1	CC	CABINET, WALL, WITH SLOPING TOP, 2 GLAZED SLIDING DOORS WITH LOCK AND 2 ADJUSTABLE SHELVES, 36"W X 16"D X 30"H (H-08-1, MCS 12301; H-08-4, SD 70B)
T14A	2	CC	CABINET, STORAGE, FLOORSTANDING, WITH SLOPING TOP, 2 GLAZED SLIDING DOORS, LOCK AND 5 ADJUSTABLE SHELVES, 48"W X 22"D X 84"H (H-08-1, MCS 12301; H-08-4, SD 70L)
	1	CC	CLOCK, ELECTRIC WITH SWEEP SECOND HAND, RECESSED (H-08-1, MCS 10360)
	1	CC	OUTLET, ELECTRICAL, RECESSED, 120 VOLT, 20 AMP, FOR CLOCK
	AR	CC	RECEPTACLE, ELECTRICAL, DUPLEX, 120 VOLT, 20 AMP (H-08-1, MCS 16140; H-08-3, CS 801-3) NOTE: PROVIDE ONE GROUND FAULT INTERRUPTER (GFI) RECEPTACLE, TO SUBFEED OTHER RECEPTACLES.
	1	CC	RECEPTACLE, ELECTRICAL, DUPLEX, 120 VOLT, 20 AMP, WITH GROUND FAULT INTERRUPTER (H-08-1, MCS, 16140; H-08-3, CS 801-3)

26 February 1993



NOTE: OUTLETS AT COUNTER LOCATION ARE 48" ABOVE FINISHED FLOOR

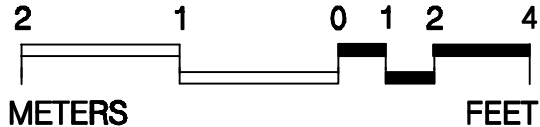
NOTE: SEE SURGICAL SUITE LAYOUT IN SECTION 3

NOTE: FOR ALL VL AND S EQUIPMENT SEE H-08-06

145 NSF
13.470 m²

Surgical Work Room and Supply

VA Design Guide -- Veterinary Medical Unit



Equipment & Utility Plan

Guide Plate 6-4

Surgical Work Room and Supply

Design Standards

ARCHITECTURAL

Floor Area	145 NSF	Wall Finish	CMU (SC)
Ceiling	PCP	Wainscot	-
Ceiling Height	9'-0"	Base	ERF
Slab Depression	-	Floor Finish	ERF
Notes:		Lead Lining	-

SPECIAL EQUIPMENT

VS-201 STERILIZER

ELECTRICAL

Lighting

General	70 FC, 3.5 W/SF
Special	-
Emergency	50% GEN FLUOR

Notes:

Power

General	540 W
Special	*
Emergency	-

*VS-201: PUMP-12 A, 480 V; CONTROLS-25 A, 120 V;
SENSOR CONTROL-1 A, 120 V

COMMUNICATIONS

Telephone	-	ADP	-
Intercom	-	Radio	-
Public Address	-	Other	-

Notes:

HEATING, VENTILATING AND AIR CONDITIONING

AC Load Lights	2.8 W/SF
AC Load Equipment	1.9 W/SF*
Number of People	2
Noise Criteria	NC-40
Room Pressure	POSITIVE
Dry Bulb Temp Cooling (F)	78
Dry Bulb Temp Heating (F)	72
Minimum Air Changes per Hour	4 (SA)
Minimum % Outside Air	100
100% Exhaust Air	YES
Special Exhaust	YES*
Steam	YES*
Relative Humidity - Cooling	50 %
Relative Humidity - Heating	30 %

Notes:

*VS-201: SEE H-08-6 FOR STEAM, HEAT GAIN AND INTEGRAL
CANOPY HOOD

PLUMBING AND MEDICAL GASES

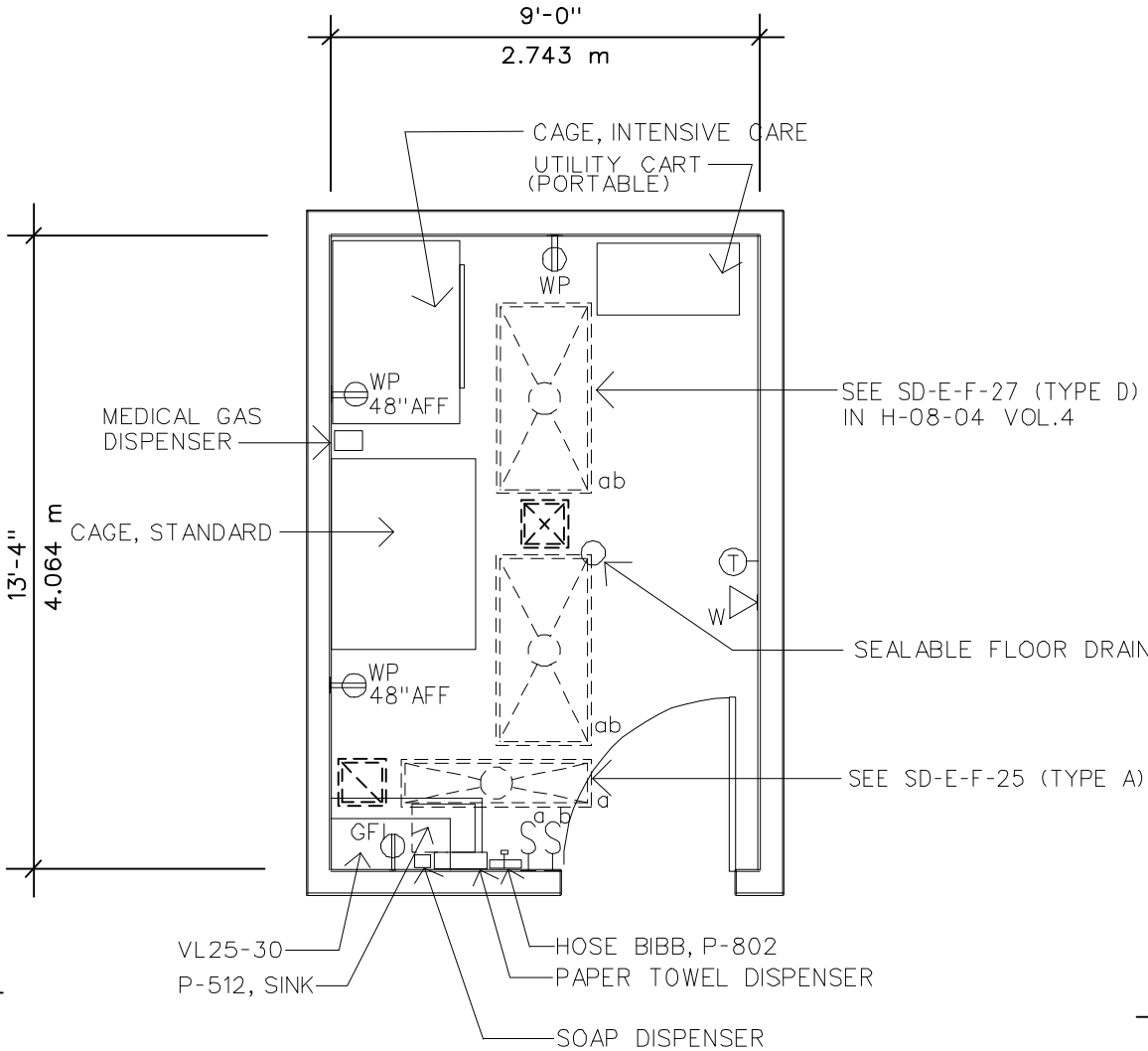
Sanitary Drain	YES	Cold Water	YES
Acid Waste	-	Hot Water	YES
Silver Recovery	-	Reagent Water	YES
Medical Air	-	Laboratory Air	-
Medical Vacuum	-	Laboratory Vacuum	-
Oxygen	-	Fuel Gas	-
Nitrous Oxide	-	Anesthesia Evac	-

Notes:

Surgical Work Room and Supply

Equipment Guide List

SYMBOL	QTY	AI	DESCRIPTION
TOP 5	AR	CF	COUNTERTOP, CORROSION RESISTING (STAINLESS) STEEL, RAISED RIM, WITH INTEGRAL SINK AND SPLASHBACKS (H-08-1 & H-08-6, MCS 11602)
S-2A	AR	CF	SINK, CORROSION RESISTING (STAINLESS) STEEL, WITH END OR CORNER DRAIN OUTLET, WITH OR WITHOUT DRAINBOARD AND SENSOR CONTROL, 25" X 18" X 16" DEEP (H-08-1 & H-08-6, MCS 11602)
	1	CC	OUTLET, DEIONIZED WATER (H-08-1, MCS 11602)
	1	VV	DISPENSER, BIFOLD PAPER TOWEL, SURFACE MOUNTED
VL20/20A	1	CF	CABINET, UNDERCOUNTER, SINK UNIT, 2 HINGED PANEL DOORS, AVAILABLE WIDTHS 30", 36", 42", 48"; DEPTH 22"; HEIGHTS 31", 25", FOR FLOOR MOUNTED ADD 5" TOE BASE (H-08-1 & H-08-6, MCS 12345)
T14A	2	CC	CABINET, STORAGE, FLOORSTANDING, WITH SLOPING TOP, 2 GLAZED SLIDING DOORS, LOCK AND 5 ADJUSTABLE SHELVES, 48"W X 22"D X 84"H (H-08-1, MCS 12301; H-08-4, SD 70L)
VL14	AR	CF	TABLE FRAME, WITH DRAWER(S), KNEE SPACE UNIT, AVAILABLE WIDTHS 18", 24", 30", 36", 42", 48"; DEPTH 22"; HEIGHT 31" (H-08-1 & H-08-6, MCS 12345)
VL25	AR	CF	CABINET, WALL, WITH SLOPING TOP, 2 GLAZED SLIDING DOORS AND 2 ADJUSTABLE SHELVES, AVAILABLE WIDTHS 30", 36", 42", 48"; DEPTH 13"; HEIGHT 30" (H-08-1 & H-08-6, MCS 12345)
VL1/1A	1	CF	CABINET, UNDERCOUNTER, WITH 4/3 DRAWERS, AVAILABLE WIDTHS 18", 24", 36", 48"; DEPTH 22"; HEIGHTS 31", 25", FOR FLOOR MOUNTED ADD 5" TOE BASE (H-08-1 & H-08-6, MCS 12345)
	AR	VV	CABINET, WITH LOCK, INSTRUMENT AND DRESSING, FLOORSTANDING, APPROX. 48"W X 18"D X 84"H
	AR	VV	WASHER, INSTRUMENT, COUNTERTOP
VS-201	1	CC	STERILIZER, MECHANICAL AIR REMOVAL, CABINET ENCLOSED, 24" X 36" X 36"/18" CU. FT. (H-08-1 & H-08-6, MCS 11710)
	1	VV	BOARD, DRY WIPE, WHITE PORCELAIN, WALL HUNG WITH, 2" MARKER RAIL, APPROX. 72"W X 48"H, 60"W X 36"H OR 48"W X 48"H
	AR	CC	RECEPTACLE, ELECTRICAL, DUPLEX, 120 VOLT, 20 AMP (H-08-1, MCS 16140; H-08-3, CS 801-3)
	1	CC	RECEPTACLE, ELECTRICAL, DUPLEX, 120 VOLT, 20 AMP, WITH GROUND FAULT INTERRUPTER (H-08-1, MCS, 16140; H-08-3, CS 801-3)



NOTE: FOR ALL VL EQUIPMENT
SEE H-08-06

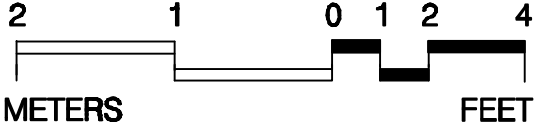
NOTE: FOR ALL P EQUIPMENT
SEE H-08-04 VOL.1

NOTE: PROVIDE ONE GROUND FAULT
INTERRUPTER (GFI) RECEPTACLE, TO
SUBFEED OTHER RECEPTACLES

NOTE: SEE SURGICAL SUITE LAYOUT IN SECTION 3

120 NSF
11.148 m²

Post Operative Intensive Care Room



Equipment & Utility Plan

Post Operative Intensive Care Room

Design Standards

ARCHITECTURAL

Floor Area	120 NSF	Wall Finish	CMU (SC)
Ceiling	PCP	Wainscot	-
Ceiling Height	9'-0"	Base	ERF
Slab Depression	-	Floor Finish	ERF
Notes:		Lead Lining	-

SPECIAL EQUIPMENT

NONE

ELECTRICAL

Lighting

General	70 FC, 3.5 W/SF*
Special	-
Emergency	ALL

Notes:
*COLOR CORRECTED FLUOR LAMPS

Power

General	720 W
Special	-
Emergency	ALL

COMMUNICATIONS

Telephone	WALL MTD	ADP	-
Intercom	PART OF TELEPHONE	Radio	-
Public Address	-	Other	-

Notes:

HEATING, VENTILATING AND AIR CONDITIONING

AC Load Lights	4.2 W/SF
AC Load Equipment	3.0 W/SF
Number of People	2
Noise Criteria	NC-40
Room Pressure	POSITIVE*
Dry Bulb Temp Cooling (F)	75
Dry Bulb Temp Heating (F)	75
Minimum Air Changes per Hour	8 (SA)
Minimum % Outside Air	100
100% Exhaust Air	YES
Special Exhaust	-
Steam	-
Relative Humidity - Cooling	50 %
Relative Humidity - Heating	30 %

Notes:
*PROVIDE WITH HIGHER ROOM POSITIVE PRESSURE THAN ANIMAL SURGICAL PREP ROOM IF ADJACENT

PLUMBING AND MEDICAL GASES

Sanitary Drain	YES	Cold Water	YES
Acid Waste	-	Hot Water	YES
Silver Recovery	-	Reagent Water	-
Medical Air	YES	Laboratory Air	-
Medical Vacuum	YES	Laboratory Vacuum	-
Oxygen	YES	Fuel Gas	-
Nitrous Oxide	-	Anesthesia Evac	-

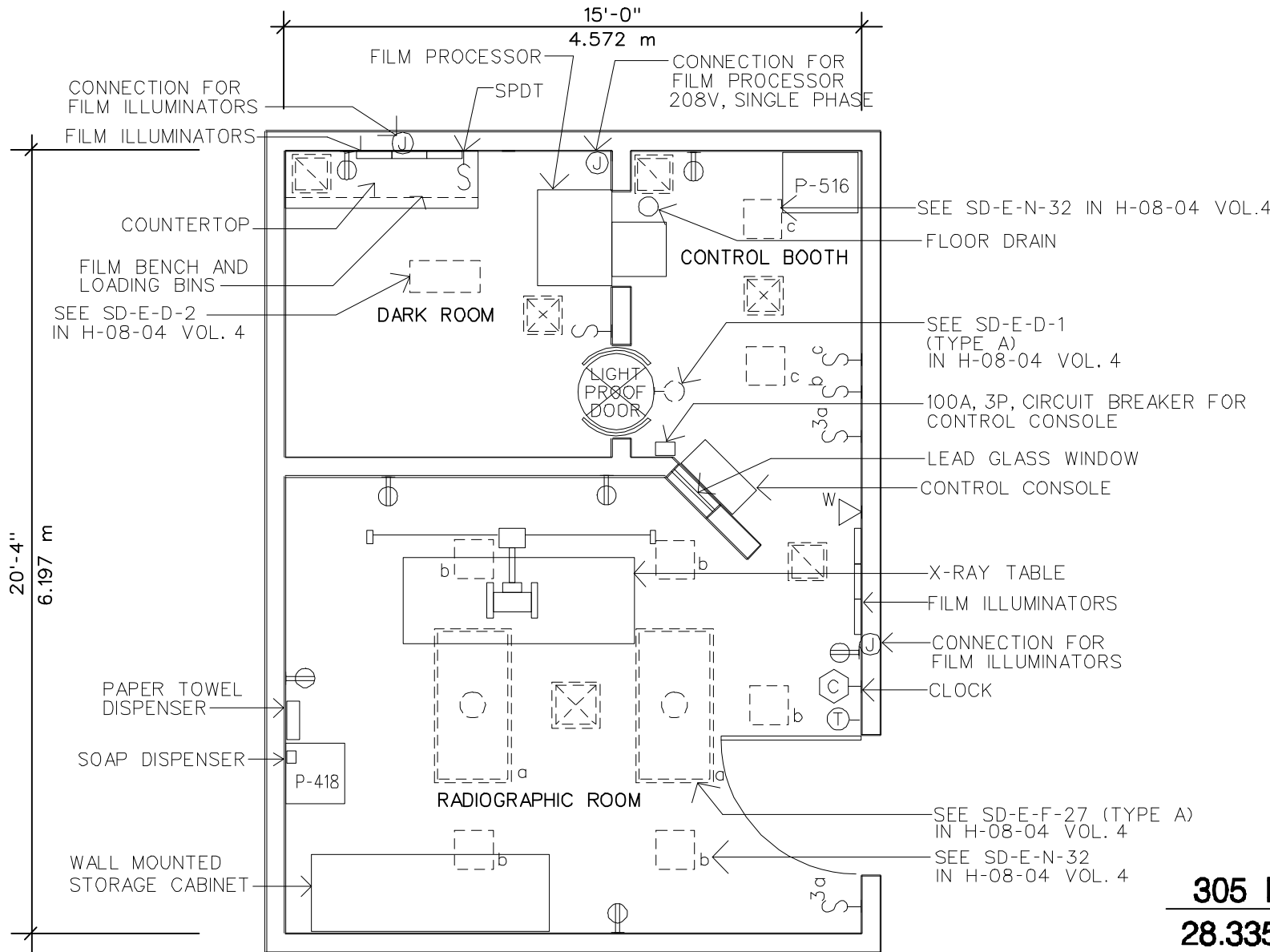
Notes:

Post Operative Intensive Care Room

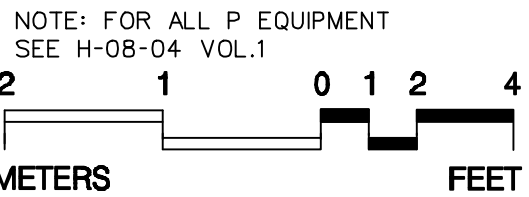
Equipment Guide List

SYMBOL	QTY	AI	DESCRIPTION
P-512	1	CC	SINK, CORROSION RESISTING STEEL, SINGLE COMPARTMENT WITH DRAINBOARD, WALL HUNG (H-08-1, MCS 15450)
	1	VV	DISPENSER, SOAP, LIQUID, WALL MOUNTED
	1	VV	DISPENSER, BIFOLD PAPER TOWEL, SURFACE MOUNTED
VL25	1	CF	CABINET, WALL, WITH SLOPING TOP, 2 GLAZED SLIDING DOORS AND 2 ADJUSTABLE SHELVES, AVAILABLE WIDTHS 30", 36", 42", 48"; DEPTH 13"; HEIGHT 30" (H-08-1 & H-08-6, MCS 12345)
	AR	CC	DRAIN, FLOOR, SEALABLE (H-08-1, MCS 15400)
	1	VV	CART, UTILITY, CORROSION RESISTING STEEL, 36"W X 18"D X 30"H
	AR	VV	CAGE, ANIMAL, STANDARD
P-802	AR	VV	CAGE, ANIMAL, INTENSIVE CARE
	1	CC	HOSE BIBB, COMBINATION FAUCET, WALL MOUNTED, CONCEALED SUPPLY PIPES (H-08-1, MCS 15450; H-08-4, SD 4.2)
	1	CC	MEDICAL GAS DISPENSER, CEILING MOUNTED, WITH AIR AND OXYGEN RETRACTABLE HOSE (H-08-1, MCS 15491; H-08-4, SD 335)
	1	VV	STAND, IV, MOBILE
	AR	CC	RECEPTACLE, ELECTRICAL, DUPLEX, 120 VOLT, 20 AMP, WITH WEATHERPROOF COVER PLATE (H-08-1, MCS 16140; H-08-3, CS 801-3)
			NOTE: PROVIDE ONE GROUND FAULT INTERRUPTER (GFI) RECEPTACLE, TO SUBFEED OTHER RECEPTACLES.
	1	CC	RECEPTACLE, ELECTRICAL, DUPLEX, 120 VOLT, 20 AMP, WITH GROUND FAULT INTERRUPTER (H-08-1, MCS, 16140; H-08-3, CS 801-3)

26 February 1993



NOTE: RADIOGRAPHIC ROOM FOR DIAGNOSTIC X-RAY AND FLUOROSCOPIC EQUIPMENT
NOTE: THIS PLAN APPLICABLE ONLY WHEN ROOM IS APPROVED BY VHA



NOTE: WALL SURFACES TO BE LEAD LINED

Radiographic Suite

Equipment & Utility Plan

Radiographic Room

Design Standards

ARCHITECTURAL

Floor Area	220 NSF	Wall Finish	CMU (SC)
Ceiling	PL	Wainscot	-
Ceiling Height	9'-6"	Base	ERF
Slab Depression	-	Floor Finish	ERF
Notes:		Lead Lining	YES

SPECIAL EQUIPMENT

NONE

ELECTRICAL

Lighting

General	0.5-1.5 W/SF*
Special	-
Emergency	-

Notes:

*10 FC INCANDESCENT ON DIMMER, 30 FC FLUORESCENT

Power

General	-
Special	-
Emergency	-

COMMUNICATIONS

Telephone	WALL MTD	ADP	EMPTY CONDUIT
Intercom	PART OF TELEPHONE	Radio	EMPTY CONDUIT
Public Address	EMPTY CONDUIT	Other	-

Notes:

HEATING, VENTILATING AND AIR CONDITIONING

AC Load Lights	4.9 W/SF
AC Load Equipment	4.9 W/SF
Number of People	3
Noise Criteria	NC-40
Room Pressure	POSITIVE
Dry Bulb Temp Cooling (F)	76
Dry Bulb Temp Heating (F)	78
Minimum Air Changes per Hour	8 (SA)
Minimum % Outside Air	100
100% Exhaust Air	YES
Special Exhaust	-
Steam	-
Relative Humidity - Cooling	50 %
Relative Humidity - Heating	30 %

Notes:

PLUMBING AND MEDICAL GASES

Sanitary Drain	YES	Cold Water	YES
Acid Waste	-	Hot Water	YES
Silver Recovery	-	Reagent Water	-
Medical Air	-	Laboratory Air	-
Medical Vacuum	-	Laboratory Vacuum	-
Oxygen	-	Fuel Gas	-
Nitrous Oxide	-	Anesthesia Evac	-

Notes:

Radiographic Room

Equipment Guide List

SYMBOL	QTY	AI	DESCRIPTION
			NOTE: APPLICABLE ONLY WHEN APPROVED BY VHA.
	1	VC	X-RAY UNIT, RADIOGRAPHIC AND FLUOROSCOPIC CONSISTS OF THE FOLLOWING COMPONENTS:
	1	VC	STARTER, TUBE, HIGH SPEED
	1	VC	MODULE, POWER
	1	VC	TRANSFORMER, HIGH TENSION, X-RAY
	1	VC	TABLE, 90 DEGREE - 15 DEGREE TRENDELENBURG R&F, WITH SPOT FILM DEVICE (TWO-WAY OR FOUR WAY TABLE TOP AND SIZE OF SPOT FILM DEVICE TO BE DETERMINED ON PROJECT BASIS)
			-OR-
	1	VC	TABLE, TILT, 90 DEGREE - 90 DEGREE R&F, WITH SPOT FILM DEVICE (TWO-WAY OR FOUR WAY TABLE TOP AND SIZE OF SPOT FILM DEVICE TO BE DETERMINED ON PROJECT BASIS)
	1	VC	TUBE CARRIAGE, CEILING MOUNTED
	1	VC	RAILS, CEILING FOR TUBE CARRIAGE
			NOTE: OPTIONAL COMPONENTS TO BE DETERMINED BY VETERANS HEALTH ADMINISTRATION.
	1	VC	IMAGE INTENSIFIER (6", 9" OR DUAL TYPE TO BE DETERMINED ON PROJECT BASIS)
	1	VC	CAMERA UNIT, CINE, FOR USE WITH IMAGE INTENSIFIER (OPTIONAL)
	1	VC	CONTROL, CINE CAMERA (OPTIONAL)
	1	VC	CAMERA, TV (FOR USE WITH IMAGE INTENSIFIER)
AR		VC	MONITOR, FOR USE WITH IMAGE INTENSIFIER
	1	VC	BUCKY, TILT, WALL MOUNTED (USE IN TYPE R-F #2 AND TYPE R-F #3) (OPTIONAL)
	1	VC	CHANGER, CASSETTE (OPTIONAL)
	1	VC	RECORDER, TV TAPE (OPTIONAL)
	1	VC	CAMERA, SPOT, 100 OR 105MM (USE IN TYPE R-F #3) (OPTIONAL)
			NOTE: SERVICES, ELECTRICAL, AS REQUIRED FOR EQUIPMENT.
AR		CC	SHIELDING, RADIATION, FOR ROOMS WITH FIXED X-RAY EQUIPMENT, IN ACCORDANCE WITH (H-08-1, MCS 13091; H-08-3, CS 64-1; H-08-4, SD 24 THRU 24K AND NCRP REPORT NO. 33, 35 AND 49)
	1	VV	ILLUMINATOR, X-RAY, WALL MOUNTED, APPROX., 20" X 31", 2 IN 1, 120 VOLT, 20 AMP
	1	CC	CASSETTE PASS BOX TO DARK ROOM AS APPROVED FOR A SPECIFIC PROJECT
	1	VV	HOOK, COAT, WALL MOUNTED
	1	VV	RACK, APRON, WALL MOUNTED
	1	VV	DISPOSAL, NEEDLES, WALL MOUNTED

Radiographic Room

Equipment Guide List

P-418	1	CC	LAVATORY, SENSOR CONTROL (H-08-1, MCS 15450; H-08-4, VOL. 3 SD 380)
	1	CC	DISPENSER, SOAP, WALL MOUNTED WITH FOOT CONTROL (H-08-1, MCS 10800)
	1	VV	DISPENSER, PAPER TOWEL, SURFACE MOUNTED
	1	VV	RECEPTACLE, WASTE, STEP ON TYPE, APPROX. 12" DIAMETER
	1	CF	CABINET, STORAGE, WALL MOUNTED, 10" ABOVE FINISHED FLOOR, 5 SHELVES AND FOLDING DOOR, APPROX., 24" X 62" X 16"
	AR	CC	LOW LEVEL DIMMED INCANDESCENT LIGHTING SYSTEM IN ADDITION TO GENERAL FLUORESCENT ILLUMINATION SYSTEM (H-08-1, MCS 16510) (ONLY IF FLUOROSCOPIC INCLUDED)
	1	VV	CLOCK, BATTERY OPERATED
	AR	CC	RECEPTACLE, ELECTRICAL, DUPLEX, 120 VOLT, 20 AMP (H-08-1, MCS 16140; H-08-3, CS 801-3)

Control Booth

Design Standards

ARCHITECTURAL

Floor Area	25 NSF	Wall Finish	CMU (SC)
Ceiling	PL	Wainscot	-
Ceiling Height	9'-6"	Base	ERF
Slab Depression	-	Floor Finish	ERF
Notes:		Lead Lining	-

SPECIAL EQUIPMENT

NONE

ELECTRICAL

Lighting

General	10 FC, 0.5 W/SF*
Special	-
Emergency	-

Notes:

*LIGHTING ON DIMMER

Power

General	-
Special	**
Emergency	-

**X-RAY MACHINE: 100 A, 208 V, 3 PHASE CIRCUIT BREAKER

COMMUNICATIONS

Telephone	WALL MTD	ADP	-
Intercom	PART OF TELEPHONE	Radio	-
Public Address	-	Other	-

Notes:

HEATING, VENTILATING AND AIR CONDITIONING

AC Load Lights	8.5 W/SF
AC Load Equipment	65.0 W/SF
Number of People	1
Noise Criteria	NC-40
Room Pressure	(0)
Dry Bulb Temp Cooling (F)	78
Dry Bulb Temp Heating (F)	72
Minimum Air Changes per Hour	8 (SA)
Minimum % Outside Air	100
100% Exhaust Air	YES
Special Exhaust	-
Steam	-
Relative Humidity - Cooling	50 %
Relative Humidity - Heating	30 %

Notes:

PLUMBING AND MEDICAL GASES

Sanitary Drain	-	Cold Water	-
Acid Waste	-	Hot Water	-
Silver Recovery	-	Reagent Water	-
Medical Air	-	Laboratory Air	-
Medical Vacuum	-	Laboratory Vacuum	-
Oxygen	-	Fuel Gas	-
Nitrous Oxide	-	Anesthesia Evac	-

Notes:

Control Booth

Equipment Guide List

SYMBOL	QTY	AI	DESCRIPTION
			NOTE: APPLICABLE ONLY WHEN APPROVED BY VHA.
AR		CC	WINDOW, LEAD GLASS (MINIMUM 18" X 24") (H-08-1, MCS 13091; H-08-4, SD 24G)
1		VC	CONSOLE, CONTROL, X-RAY, FOR X-RAY UNIT (CAPACITY OF GENERATOR TO BE DETERMINED ON PROJECT BASIS)
1		CC	INTERCOM, STATION (H-08-1, MCS 16760) (OPTIONAL)
1		CC	OUTLET, INTERCOM (EMPTY CONDUIT SYSTEM) (H-08-1, MCS 16111) (OPTIONAL)
			NOTE: PROVIDE INTERCOM STATION IN CONTROL BOOTH CONNECTED TO REMOTE STATION IN X-RAY ROOM, WHEN CONTROL BOOTH IS SEPARATED FROM X-RAY ROOM.
AR		CC	LIGHT, WARNING (DO NOT ENTER) OVER DOOR (H-08-4, SD E-D-2)

Dark Room

Design Standards

ARCHITECTURAL

Floor Area	60 NSF	Wall Finish	CMU (SC)
Ceiling	PL	Wainscot	-
Ceiling Height	9'-0"	Base	ERF
Slab Depression	-	Floor Finish	ERF
Notes:		Lead Lining	-

SPECIAL EQUIPMENT

FILM PROCESSOR

ELECTRICAL

Lighting

General	10 FC, 0.5 W/SF
Special	SAFELIGHT
Emergency	-
Notes:	

Power

General	180 W
Special	*
Emergency	-

*FILM PROCESSOR: 208 V, 1 PHASE

COMMUNICATIONS

Telephone	-	ADP	-
Intercom	-	Radio	-
Public Address	-	Other	-
Notes:			

HEATING, VENTILATING AND AIR CONDITIONING

AC Load Lights	2.8 W/SF
AC Load Equipment	10.0 W/SF
Number of People	1
Noise Criteria	NC-40
Room Pressure	NEGATIVE
Dry Bulb Temp Cooling (F)	78
Dry Bulb Temp Heating (F)	72
Minimum Air Changes per Hour	8 (SA)
Minimum % Outside Air	100
100% Exhaust Air	YES
Special Exhaust	YES*
Steam	-
Relative Humidity - Cooling	50 %
Relative Humidity - Heating	30 %

Notes:

*FILM PROCESSOR NORMALLY REQUIRES A 4" ROUND EXHAUST DUCT

PLUMBING AND MEDICAL GASES

Sanitary Drain	YES	Cold Water	YES
Acid Waste	YES	Hot Water	YES
Silver Recovery	YES (LOCAL)	Reagent Water	-
Medical Air	-	Laboratory Air	-
Medical Vacuum	-	Laboratory Vacuum	-
Oxygen	-	Fuel Gas	-
Nitrous Oxide	-	Anesthesia Evac	-

Notes:

Dark Room

Equipment Guide List

SYMBOL	QTY	AI	DESCRIPTION
			NOTE: APPLICABLE ONLY WHEN APPROVED BY VHA.
	1	VC	PROCESSOR, FILM, AUTOMATIC, 90 SECOND PROCESSING CYCLE, THRU WALL
	1	CC	FLOOR DRAIN, NEAR FILM PROCESSING UNITS (PLUMBING DESIGN CRITERIA AND INSTRUCTIONS)
	1	VC	CHEMICAL AUTOMATED DISPENSING (CAD) REPLENISHMENT SYSTEM FOR PROCESSOR
P-516	1	CC	SINK, CORROSION RESISTING STEEL, SINGLE COMPARTMENT, WALL HUNG (H-08-1, MCS 15450)
	AR	VV	ILLUMINATOR, X-RAY, WALL MOUNTED, 120 VOLT, 20 AMP, LOCATED ON ADJACENT WALL OUTSIDE DARKROOM
	AR	CC	COUNTERTOP, PLASTIC LAMINATE, FIXED, WALL MOUNTED, 30" ABOVE FINISHED FLOOR, APPROX., 60" X 18", PROVIDE UNDER ILLUMINATOR (H-08-1, MCS 12302)
	1	VV	BENCH, FILM LOADING AND STORAGE BINS
	1	CC	SAFELIGHT, WALL HUNG OVER FILM BENCH (H-08-4, SD E-D-4)
	AR	CC	RECEPTACLE, ELECTRICAL, DUPLEX, 120 VOLT, 20 AMP, WITH WEATHERPROOF COVER PLATE (H-08-1, MCS 16140; H-08-3, CS 801-3)
	AR	CC	CONNECTIONS, PLUMBING, ELECTRICAL OR MECHANICAL AS REQUIRED
			NOTE: PROVIDE PIPING CONNECTION FROM PROCESSORS TO SILVER RECOVERY SYSTEM.