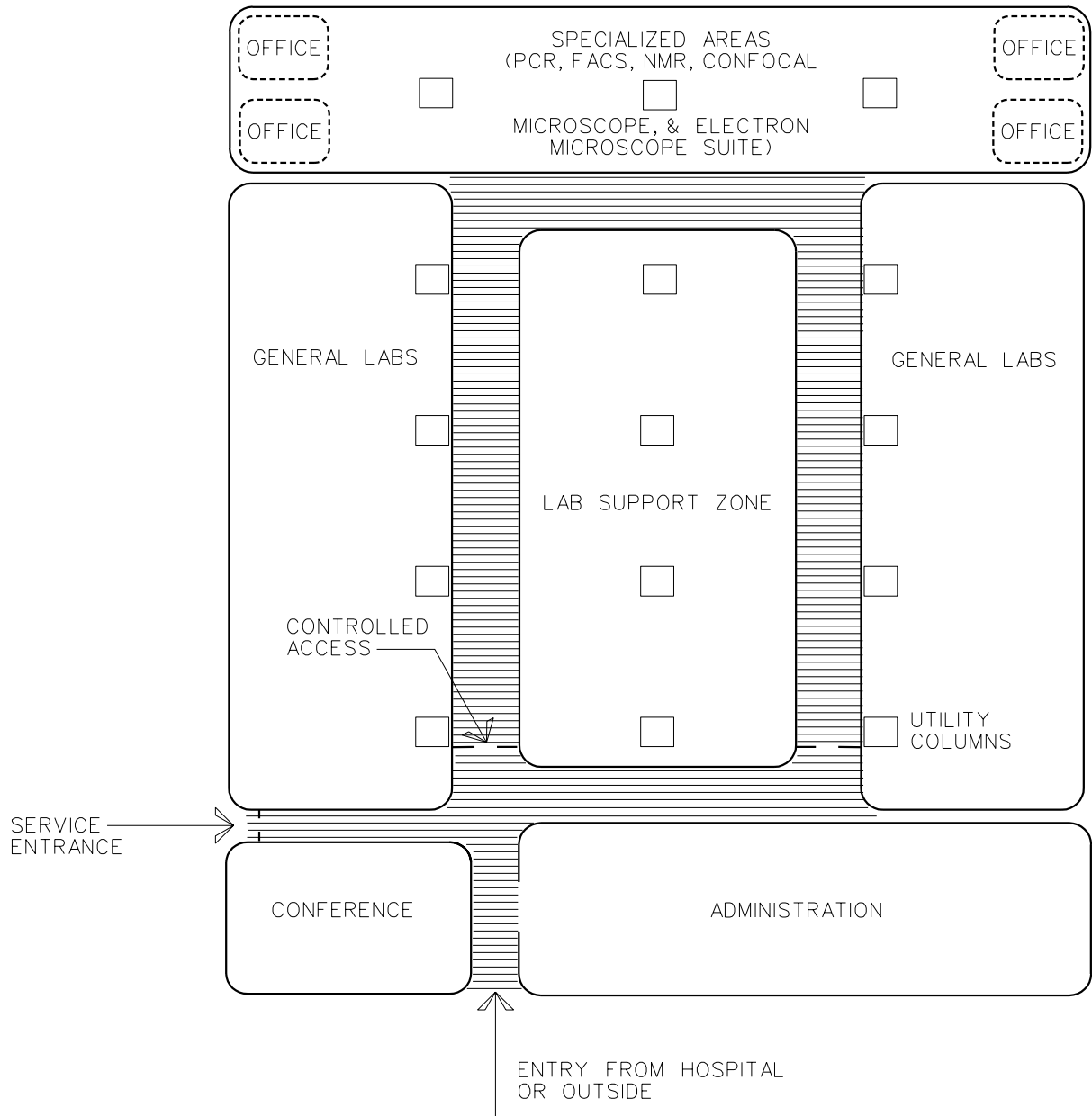


# Section 3 Relationship Diagrams and Generic Layout Diagram

	Diagram
One Lab Neighborhood (Racetrack Corridor) .....	3 - 1
One Lab Neighborhood (Internal Lab Support) .....	3 - 2
Large Research Facility — Six Lab Neighborhoods.....	3 - 3
Laboratory Module .....	3 - 4
Quadruple Module Laboratory .....	3 - 5
Electron Microscope Suite.....	3 - 6

# Relationship Diagram One Lab Neighborhood (Racetrack Corridor)

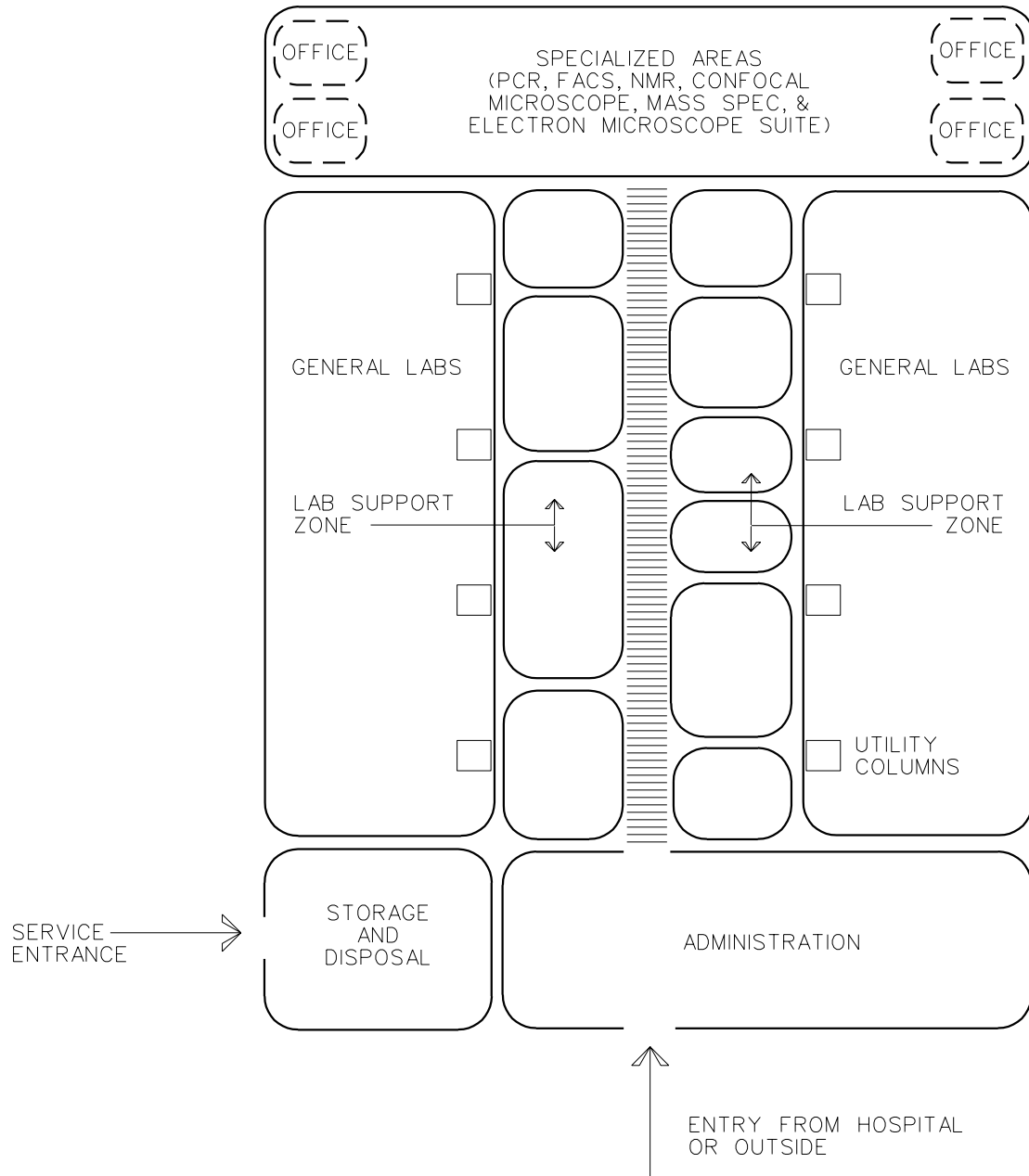


NOTE:  
SEE NARRATIVE "SPACE RELATIONSHIPS"  
FOR A DISCUSSION OF THE LAB  
NEIGHBORHOOD.

NOTE:  
IDEAL SIZE FOR A LAB NEIGHBORHOOD  
IS 1100 m<sup>2</sup> (12,000 ft<sup>2</sup>) INCLUSIVE

LAB SHARED SUPPORT AREAS:  
OFFICE AREA  
GLASSWARE WASHING ROOM  
ULTRALOW FREEZER ROOM  
COMMON INSTRUMENT ROOM  
COLD PROCEDURE ROOM  
DARK ROOMS  
TISSUE CULTURE LAB  
MEDIA PREP ROOM  
STORAGE AREAS

# Relationship Diagram One Lab Neighborhood (Internal Lab Support)



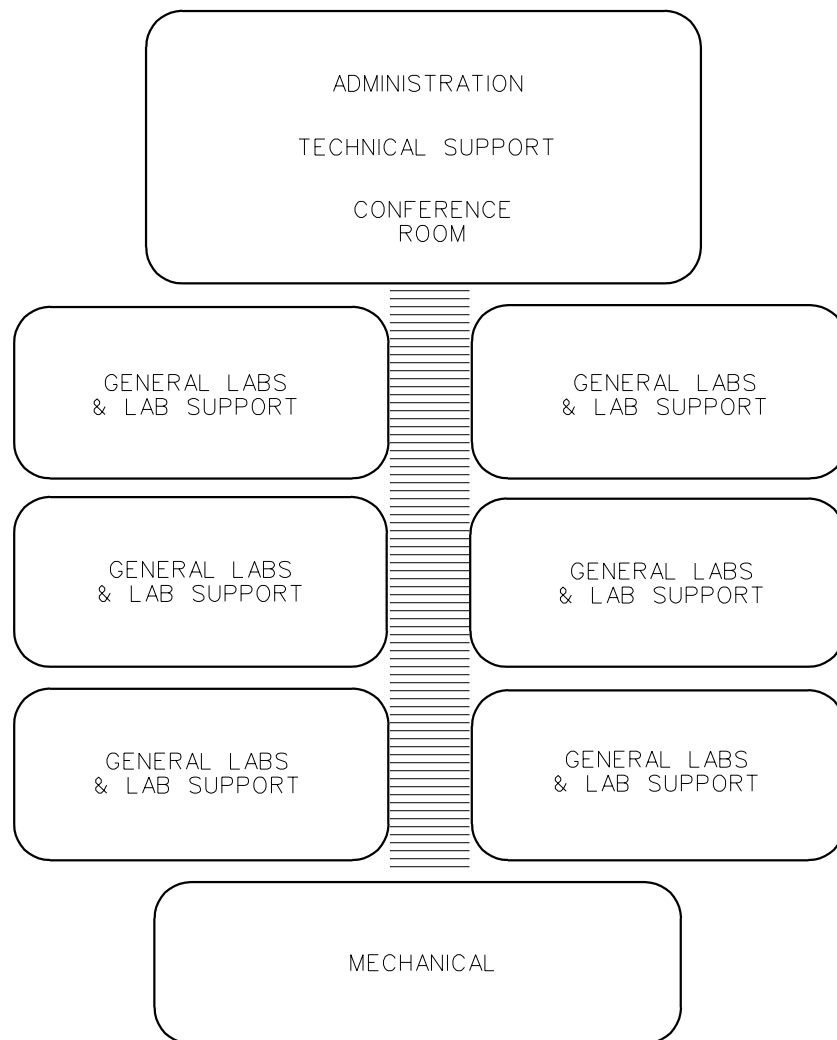
NOTE:  
SEE NARRATIVE "SPACE RELATIONSHIPS" FOR  
A DISCUSSION OF THE LAB NEIGHBORHOOD.

NOTE:  
FLOW TO CORRIDOR IS THROUGH  
SUPPORT ZONE.

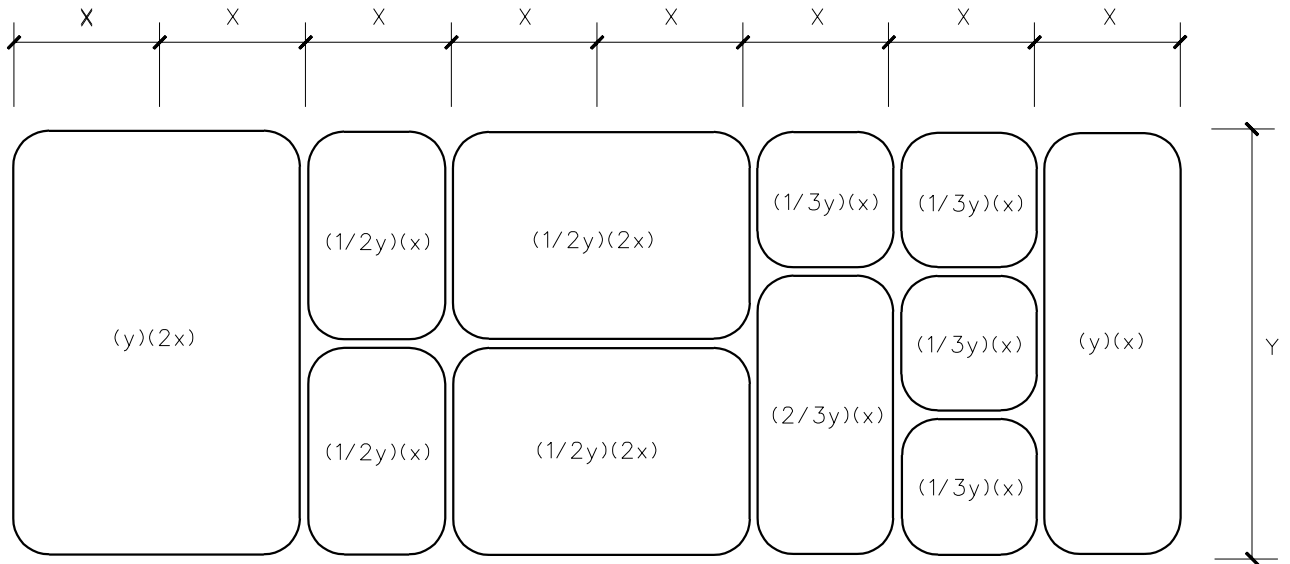
NOTE:  
IDEAL SIZE FOR A LAB NEIGHBORHOOD  
IS 1100 m<sup>2</sup> (12,000 ft<sup>2</sup>) INCLUSIVE.

LAB SHARED SUPPORT AREAS:  
OFFICE AREA  
GLASSWARE WASHING ROOM  
ULTRALOW FREEZER ROOM  
COMMON INSTRUMENT ROOM  
COLD PROCEDURE ROOM  
DARK ROOMS  
TISSUE CULTURE LAB  
MEDIA PREP ROOM  
STORAGE AREAS

# Relationship Diagram Large Research Facility - Six Lab Neighborhoods



# Relationship Diagram Laboratory Module



X = 1 LABORATORY MODULE WIDTH

Y = 1 LABORATORY MODULE DEPTH

#### GENERAL NOTES:

LAB MODULE WIDTH AND DEPTH MUST BE DETERMINED EARLY IN THE PLANNING STAGE.

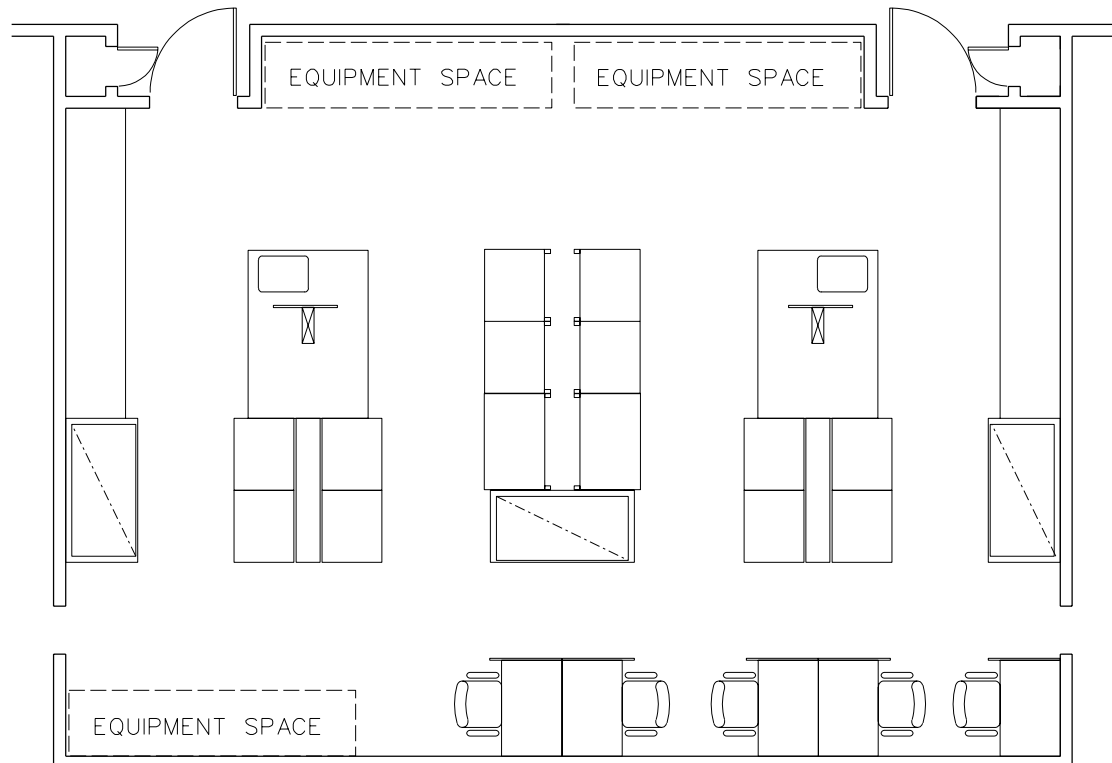
ESTABLISHED MODULE CONTINUES THROUGHOUT FACILITY, INCLUDING LAB SUPPORT AREAS.

SPACE FOR THE CORRIDOR IS GENERATED FROM THE LAB MODULE.

THIS DESIGN GUIDE ASSUMES:

X = 3200 mm (10'-6") Y = 9300 mm (30'-6")

# Generic Layout Diagram Quadruple Module Laboratory

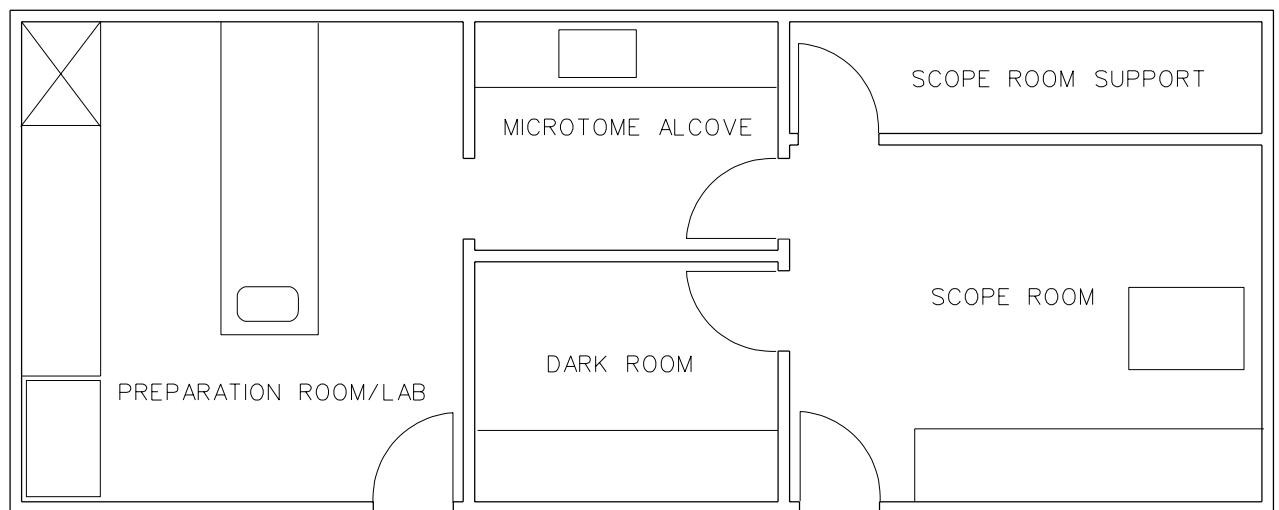


NOT TO SCALE

NOTE:

THIS DIAGRAM EXPANDS UPON THE LAB MODULE CONCEPT. REFER TO SECTION 4 FOR SINGLE AND DOUBLE MODULE LABORATORY PLANS.

# Relationship Diagram Electron Microscope Suite



NOT TO SCALE

NOTE:  
THIS DRAWING IS SOLELY A  
RELATIONSHIP DIAGRAM.  
PLANNED SPACES MUST COMPLY  
WITH THE ESTABLISHED MODULE.