

Section 3

**Design Guide Plates
and Data Sheet:
Outpatient Pharmacy**

Guide Plate Series	Plate Number
--------------------	--------------

Prescription Receiving
Equipment & Utility Plan 3-1
Reflected Ceiling Plan..... 3-1
Design Standards 3-1
Equipment Guide List 3-1

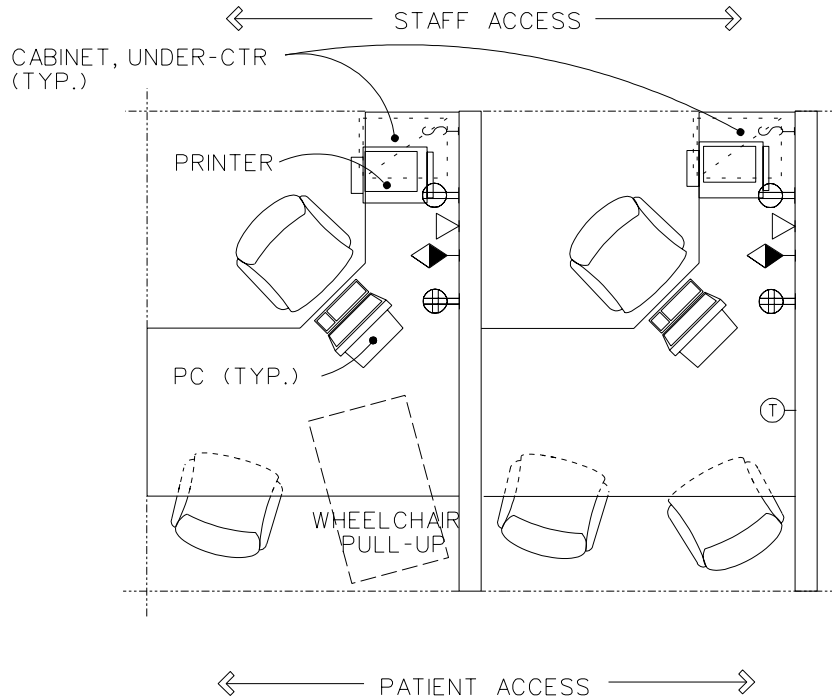
Filing and Assembly
Equipment & Utility Plan 3-2
Reflected Ceiling Plan..... 3-2
Design Standards 3-2
Equipment Guide List 3-2

Dispensing
Equipment & Utility Plan 3-3
Reflected Ceiling Plan..... 3-3
Design Standards 3-3
Equipment Guide List 3-3

Prepacking & Extemporaneous Compounding
Equipment & Utility Plan 3-4
Reflected Ceiling Plan..... 3-4
Design Standards 3-4
Equipment Guide List 3-4

Equipment & Utility Plan Prescription Receiving

First Draft 8-14-96
Revised June 97

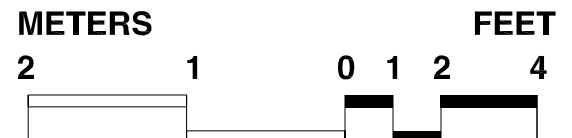


NOTES:
AT LEAST ONE STATION MUST
COMPLY WITH PREVAILING BARRIER-
FREE REQUIREMENTS

EACH STATION-70 NSF/6.5 NSM

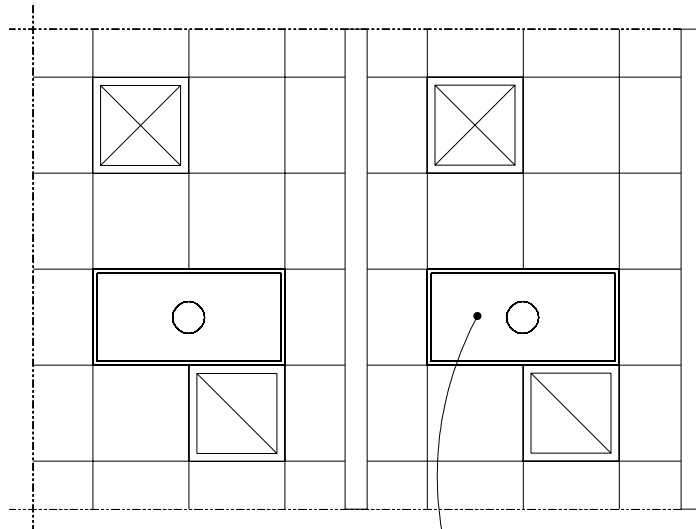
OPEN PHARMACY CONCEPT SHOWN.
VAMC MAY PREFER SECURE RECEIVING
AREA.

13.0 NSM
140 NSF

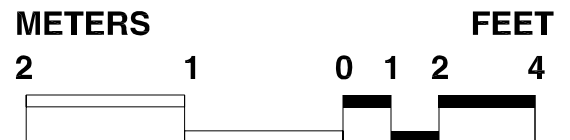


Reflected Ceiling Plan Prescription Receiving

First Draft 8-14-96
Revised June 97



SEE: DESIGN STDS.
LIGHTING-NOTE 2. (TYP.)



Design Standards

Prescription Receiving

ARCHITECTURAL

Ceiling:	Acoustic lay-in ceiling tile
Ceiling Ht:	2740 mm (9'-0")
Wall Finish:	Fabric (Tackboard Wall Surface)
Wainscot:	--
Base:	Resilient base
Floor Finish:	Carpet
Slab Depr:	--
Notes:	

SPECIAL EQUIPMENT

None

LIGHTING

General:	1.7 w/sf 538 lx (50 FC)
Special:	--
Notes:	<ol style="list-style-type: none"> 1. Single switch per station controls station lighting. As an alternate, lighting may be controlled by area with switch(es) located at room entrance. 2. 600mm x 1200mm (2' x 4') recessed fluorescent light fixture, parabolic louver, W/3-F32T8 lamps, 3500°K, CRI=75 (minimum)

POWER

General:	1200W (receptacles)
Emergency:	--
Notes:	

COMMUNICATION

ADP:	Yes
Radio:	--
Telephone:	Yes
Intercom:	--
Pub. Addr:	--
Notes:	1. Nurse Call/Code One/EMS recorder.

HEATING, VENTILATING AND AIR CONDITIONING

Dry Bulb Temp Cooling:	22°C (72°F)
Dry Bulb Temp Heating:	22°C (72°F)
Minimum % Outside Air:	15
100% Exhaust Air:	--
Noise Criteria:	NC-35
Steam:	--
Relative Humidity/Cooling:	50%
Relative Humidity/Heating:	30%
Minimum Air Changes/Hr.:	4
Room Pressure:	0
AC Load Lighting:	18 w/sm (1.7 w/sf)
AC Load-Equipment:	46 w/sm (4.3w/sf)
Number of People:	3
Special Exhaust:	--
Notes:	

PLUMBING AND MEDICAL GASES

Cold Water:	--
Hot Water:	--
Laboratory Air:	--
Laboratory Vacuum:	--
Sanitary Drain:	--
Reagent Grade Water:	--
Medical Air:	--
Medical Vacuum:	--
Oxygen:	--
Notes:	--

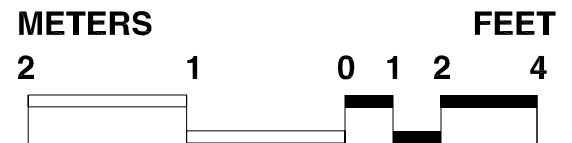
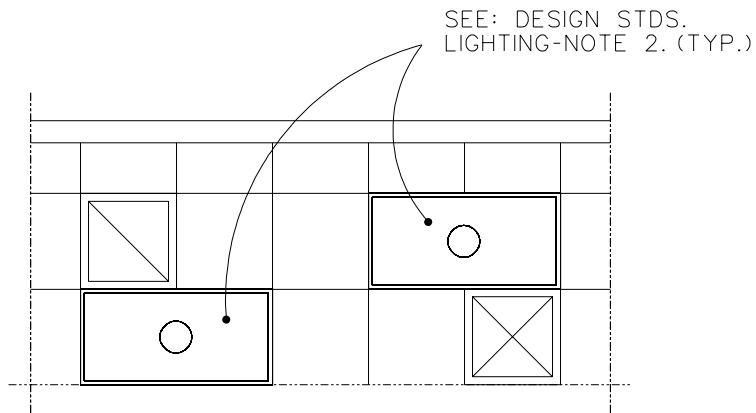
Equipment Guide List

Prescription Receiving

SYMBOL	QTY	AI	DESCRIPTION
AR		CF	CABINET, UNDER COUNTER, 3 DRAWER, 395mm W x 55mm D x 760mm H (15"W X 22"D X 30"H)
AR		CF	COUNTER TOP, HIGH PRESSURE PLASTIC LAMINATE DECORATIVE
AR		VV	CHAIR, ROTARY, WITH ARMS
AR		VV	CHAIR, STRAIGHT, WITH ARMS
AR		VV	COMPUTER, PRINTER
AR		VV	PC, COMPUTER SYSTEM, WITH KEYBOARD
1		CC	RECEPTACLE, ELECTRICAL, QUADAPLEX FOR COMPUTER EQUIPMENT ITEMS (PG-18-1, MCS 16140, H18-3, CS 866-1)
AR		CC	RECEPTACLE, ELECTRICAL, DUPLEX, 120 VOLTS, 20 AMPS (PG-18-1, MCS 16140: H-18-3, CS 801-3)

Reflected Ceiling Plan Filing and Assembly

First Draft 8-14-96
Revised June 97



Design Standards

Filing and Assembly

ARCHITECTURAL

Ceiling:	Acoustic lay-in ceiling Tile
Ceiling Ht:	2740 mm (9'-0")
Wall Finish:	Painted Gypsum Wallboard
Wainscot:	--
Base:	Resilient base
Floor Finish:	Carpet
Slab Depr:	--
Notes:	--

SPECIAL EQUIPMENT

None

LIGHTING

General:	4 w/sf 1076 lx (100 FC)
Special:	--
Notes:	<ol style="list-style-type: none"> 1. Lighting controlled by area with switch(es) at room entrance. 2. 600mm x 1200mm (2' x 4') recessed fluorescent light fixture, parabolic louver lens, w/3-F32T8 lamps, 3500°k, CRI=75 (minimum) 3. Coordinate height of rotary file with lighting layout.

POWER

General:	200 W (receptacles)
Emergency:	--
Notes:	1. Junction box for 120V power connection to electric rotary file

COMMUNICATION

ADP:	--
Radio:	--
Telephone:	Yes
Intercom:	--
Pub. Addr:	--
Notes:	--

HEATING, VENTILATING AND AIR CONDITIONING

Dry Bulb Temp Cooling:	22°C (72°F)
Dry Bulb Temp Heating:	22°C (72°F)
Minimum % Outside Air:	15
100% Exhaust Air:	--
Noise Criteria:	NC-35
Steam:	--
Relative Humidity/Cooling:	50%
Relative Humidity/Heating:	30%
Minimum Air Changes/Hr.:	4
Room Pressure:	0
AC Load Lighting:	43 w/sm (4 w/sf)
AC Load-Equipment:	32 w/sm (3 w/sf)
Number of People:	2
Special Exhaust:	--
Notes:	

PLUMBING AND MEDICAL GASES

Cold Water:	--
Hot Water:	--
Laboratory Air:	--
Laboratory Vacuum:	--
Sanitary Drain:	--
Reagent Grade Water:	--
Medical Air:	--
Medical Vacuum:	--
Oxygen:	--
Notes:	

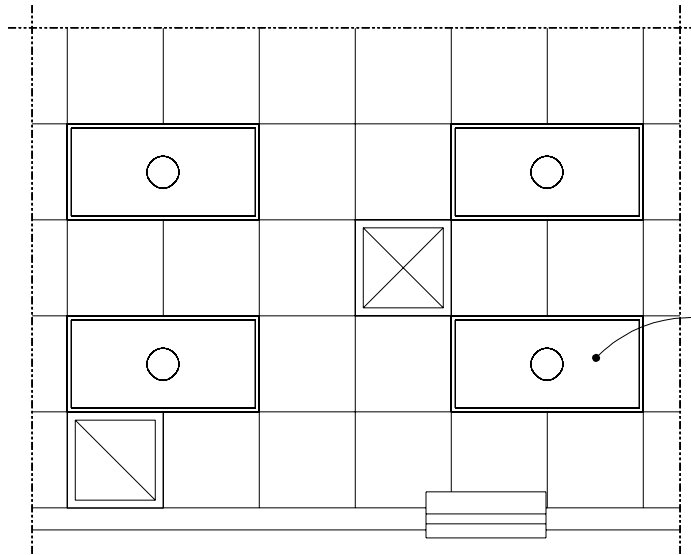
Equipment Guide List

Filing and Assembly

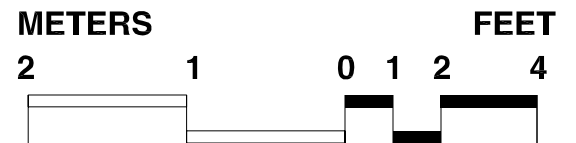
SYMBOL	QTY	AI	DESCRIPTION
AR	CF		CABINET, UNDER COUNTER, 3 DRAWER, 395mm W x 555mm D x 760mm H) 15"W X 22"D X 30"H
AR	CF		COUNTER TOP, HIGH PRESSURE PLASTIC LAMINATE DECORATIVE
AR	VV		CHAIR, ROTARY, WITH ARMS
AR	VV		CLOCK, BATTERY OPERATED
AR	VV		FILE, ROTARY, MECHANICAL POWER, ELECTRIC, 120 VOLTS, 20 AMPS (See 5-2 Lighting Note # 3)
AR	CC		RECEPTACLE, ELECTRICAL, DUPLEX, 120 VOLTS, 20 AMPS (PG-18-1, MCS 16140: H-18-3, CS 801-3)

Reflected Ceiling Plan Dispensing

First Draft 8-14-96
Revised June 97



SEE: DESIGN STDS.
LIGHTING-NOTE 2. (TYP.)



Design Standards

Dispensing

ARCHITECTURAL

Ceiling:	Acoustic lay-in Ceiling Tile
Ceiling Ht:	2740 mm (9'-0")
Wall Finish:	Painted Gypsum Wallboard on reinforced masonry sub-wall.
Wainscot:	--
Base:	Resilient base
Floor Finish:	Carpet
Slab Depr:	--
Notes:	1. Refer to VA Construction Standard CD-49 for security criteria

SPECIAL EQUIPMENT

None

LIGHTING

General:	3.5 w/sf 1076 lx (100 FC)
Special:	--
Notes:	1. Lighting controlled by area with switch(es) located at room entrance. 2. 600 x 1200 mm (2'x4') recessed fluorescent light fixture, parabolic louver lens, W/30K-F32T8 lamps, 3500°K, CRI=75 (Minimum)

POWER

General:	600W (receptacles)
Emergency:	--
Notes:	1. Junction box for 120V power connection to electronic tablet counting machine. 2. Junction box(es) for 120V power and signal connections to patient notification monitor.

COMMUNICATION

ADP:	Yes
Radio:	--
Telephone:	Yes
Intercom:	--
Pub. Addr	--
Notes:	1. Conduit and junction boxes required for patient notification monitor system.

HEATING, VENTILATING AND AIR CONDITIONING

Dry Bulb Temp Cooling:	22°C (72°F)
Dry Bulb Temp Heating:	22°C (72°F)
Minimum % Outside Air:	15
100% Exhaust Air:	--
Noise Criteria:	NC-35
Steam:	--
Relative Humidity/Cooling:	50%
Relative Humidity/Heating:	30%
Minimum Air Changes/Hr.:	4
Room Pressure:	0
AC Load Lighting:	38 w/sm (3.5 w/sf)
AC Load-Equipment:	54 w/sm (5 w/sf)
Number of People:	3
Special Exhaust:	--
Notes:	

PLUMBING AND MEDICAL GASES

Cold Water:	--
Hot Water:	--
Laboratory Air:	--
Laboratory Vacuum:	--
Sanitary Drain:	--
Reagent Grade Water:	--
Medical Air:	--
Medical Vacuum:	--
Oxygen:	--
Notes:	--

Equipment Guide List

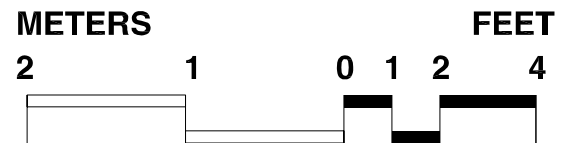
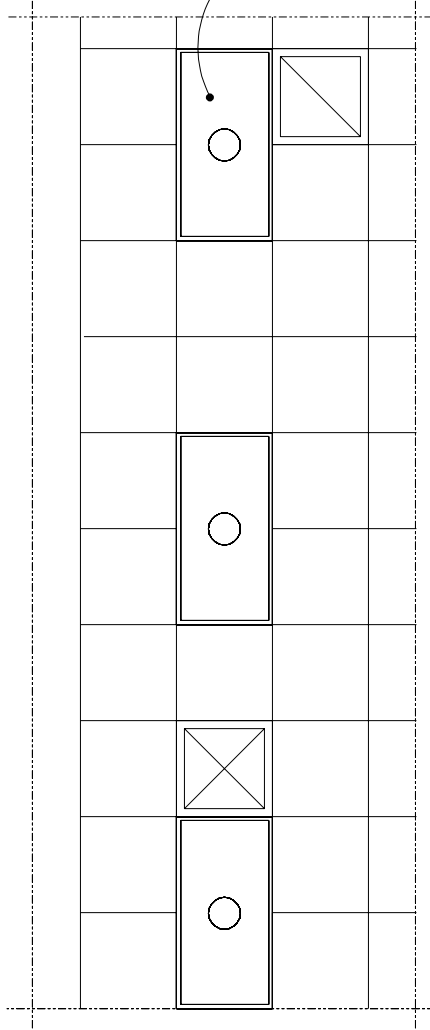
Dispensing

SYMBOL	QTY	AI	DESCRIPTION
AR		CC	SERVICE WINDOW, BULLET RESISTIVE, ONE WINDOW AT WHEELCHAIR HEIGHT AND ONE CONVENTIONAL HEIGHT WITH PACKAGE TRANSFER BOX (PG-18-1, MCS 11022; PG-18-4, SD 67B)
AR		CF	BELT, CONVEYOR, 1 TO 5 BELTS AS REQUIRED (WHEN APPROVED BY VHA)
AR		CF	MODULAR CASEWORK, W/ OVERHEAD CABINETS AND WALL HANGER STRIP
		CF	NOTE: DISPENSING SYSTEMS SHALL BE AS DIRECTED BY VHA
AR		VV	CHAIR, ROTARY, WITH ARMS
AR		VV	CLOCK, BATTERY OPERATED
AR		VV	COMPUTER, PRINTER
AR		VV	CRT, COMPUTER SYSTEM, WITH KEYBOARD
AR		VV	MACHINE, COUNTING TABLET, ELECTRONIC, 120 VOLTS, 20 AMPS, 600mm W x 600mm D (24"W X 24"D)
AR		VV	MONITORS, HIGH RESOLUTION, PATIENT NOTIFICATION SYSTEM, BLACK AND WHITE, 685mm (27")
1		CC	RECEPTACLE, ELECTRICAL, QUADAPLEX FOR COMPUTER EQUIPMENT ITEMS (PG-18-1, MCS 16140, H18-3, CS 866-1)
AR		CC	RECEPTACLE, ELECTRICAL, DUPLEX, 120 VOLTS, 20 AMPS (PG-18-1, MCS 16140: H-18-3, CS 801-3)

Reflected Ceiling Plan Prepackaging & Extemporaneous Compounding

First Draft 8-14-96
Revised June 97

SEE: DESIGN STDS.
LIGHTING-NOTE 2. (TYP.)



Design Standards

Prepacking & Extemporaneous Compounding

ARCHITECTURAL

Ceiling:	Acoustic Lay-In Ceiling Tile
Ceiling Ht:	2740 mm (9'-0")
Wall Finish:	Painted Gypsum Wallboard
Wainscot:	--
Base:	Resilient Base
Floor Finish:	Vinyl Composition Tile or Carpet
Slab Depr:	--
Notes:	

SPECIAL EQUIPMENT

None

LIGHTING

General:	2.9 w/sf 1076 lx(100 FC)
Special:	--
Notes:	<ol style="list-style-type: none"> 1. Lighting control by area with switch(es) at room entrance. 2. 600mm x 1200mm (2' x 4') recessed fluorescent light fixture, parabolic louver lens, W/4-F32T8 lamps, 3500°K, CRI=75 (minimum)

POWER

General:	1000W (receptacles on electrical strip mold on modular casework).
Emergency:	--
Notes:	<ol style="list-style-type: none"> 1. Junction box for 120V power connection to electrical strip mold on modular casework. 2. Junction box for 120V power connection to tablet and capsule counting machine.

COMMUNICATION

ADP:	Yes
Radio:	--
Telephone:	Yes
Intercom:	--
Pub. Addr:	--
Notes:	<ol style="list-style-type: none"> 1. Junction box for communications cabling routed via modular case-work utility access lab module to outlets on casework.

HEATING, VENTILATING AND AIR CONDITIONING

Dry Bulb Temp Cooling:	22°C (72°F)
Dry Bulb Temp Heating:	22°C (72°F)
Minimum % Outside Air:	15
100% Exhaust Air:	--
Noise Criteria:	NC-35
Steam:	--
Relative Humidity/Cooling:	50%
Relative Humidity/Heating:	30%
Minimum Air Changes/Hr.:	4
Room Pressure:	0
AC Load Lighting:	31 w/sm (2.9 w/sf)
AC Load-Equipment:	43 w/sm (4 w/sf)
Number of People:	3
Special Exhaust:	--
Notes:	

PLUMBING AND MEDICAL GASES

Cold Water:	Yes
Hot Water:	Yes
Laboratory Air:	--
Laboratory Vacuum:	--
Sanitary Drain:	Yes
Reagent Grade Water:	--
Medical Air:	--
Medical Vacuum:	--
Oxygen:	--
Notes:	<ol style="list-style-type: none"> 1. Sanitary drain and vent need to be chemical resistant type.

Equipment Guide List

Prepacking & Extemporaneous Compounding

SYMBOL	QTY	AI	DESCRIPTION
AR		CF	MODULAR CASEWORK , W/ OVERHEAD BINS, UTILITY ACCESS MODULE AND WALL HANGER STRIP
AR		CF	SINK, CORROSION RESISTING STEEL, 555mm x 405mm x 205mm (22" X 16" X 8")
AR		CF	PEGBOARD, 405mm W x 600mm H (16"W X 24"H)
AR		VV	CABINET, FILING, UNDER COUNTER, 380mm W x 635mm D (15"W X 25"D)
AR		VV	CHAIR, ROTARY, WITH ARMS
AR		VV	CLOCK, BATTERY OPERATED
AR		VV	MACHINE, COUNTING, TABLET AND CAPSULE, 910mm W x 610mm D (36"W X 24"D)
AR		VV	COMPUTER, PRINTER
AR		VV	PC, COMPUTER SYSTEM, WITH KEYBOARD
1		CC	RECEPTACLE, ELECTRICAL, QUADAPLEX FOR COMPUTER EQUIPMENT ITEMS (PG-18-1, MCS 16140, H18-3, CS 866-1)
AR		CC	RECEPTACLE, ELECTRICAL, DUPLEX, 120 VOLTS, 20 AMPS (PG-18-1, MCS 16140: H-18-3, CS 801-3)