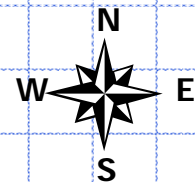


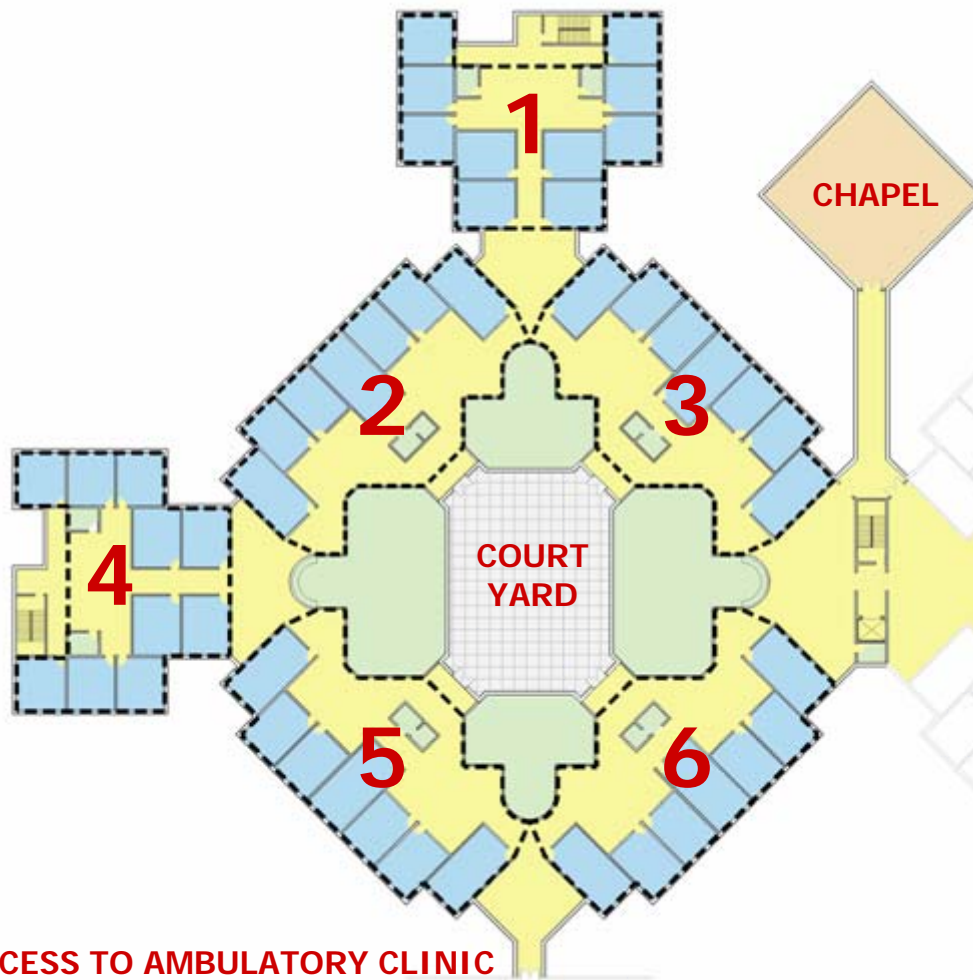
Department of Veterans Affairs
St. Albans Medical Center Capital Modernization
Local Advisory Panel Briefing, January 22, 2007



Department of Veterans Affairs
St. Albans Medical Center Capital Modernization
Summary of Services

1. **Nursing Care Center (180 beds) 137,000 GSF**




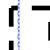
Department of Veterans Affairs St. Albans Medical Center Capital Modernization Conceptual Design of Typical Nursing Care Unit



DESIGN ADVANTAGES

- THERE ARE THREE NURSING UNITS
- EACH UNIT HAS SIX NEIGHBORHOODS
- EACH NEIGHBORHOOD HAS 10 RESIDENTS

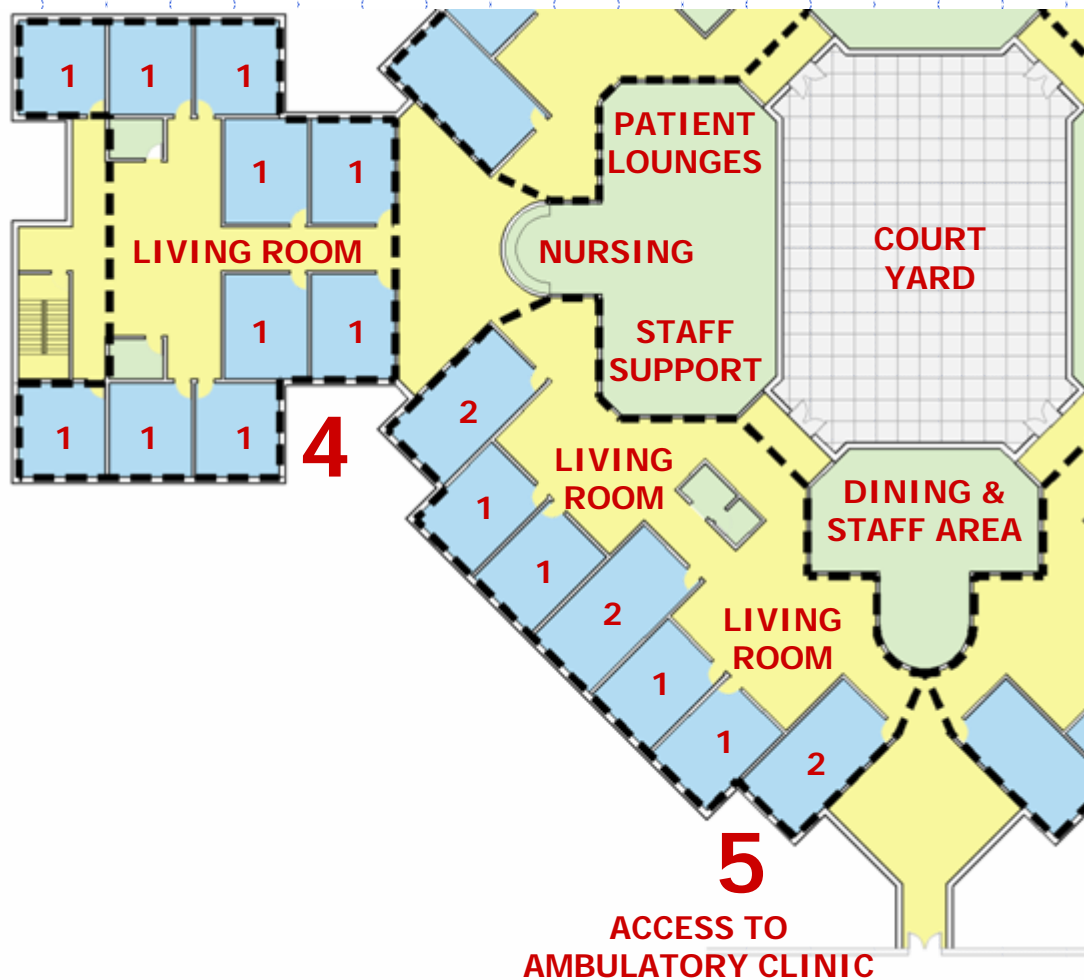
LEGEND

-  PATIENT ROOMS
-  LIVING AREAS
-  PATIENT RECREATION AND STAFF SUPPORT
-  NEIGHBORHOOD

ACCESS TO AMBULATORY CLINIC

TYPICAL NURSING UNIT LEVEL

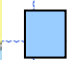



Department of Veterans Affairs St. Albans Medical Center Capital Modernization Conceptual Design of Typical Nursing Care Unit



DESIGN ADVANTAGES

- COMMON AREAS FOR EACH NEIGHBORHOOD
- NURSES STATIONS HAVE EXCELLENT VISIBILITY
- SHARED AREAS FOR ALL RESIDENTS

LEGEND

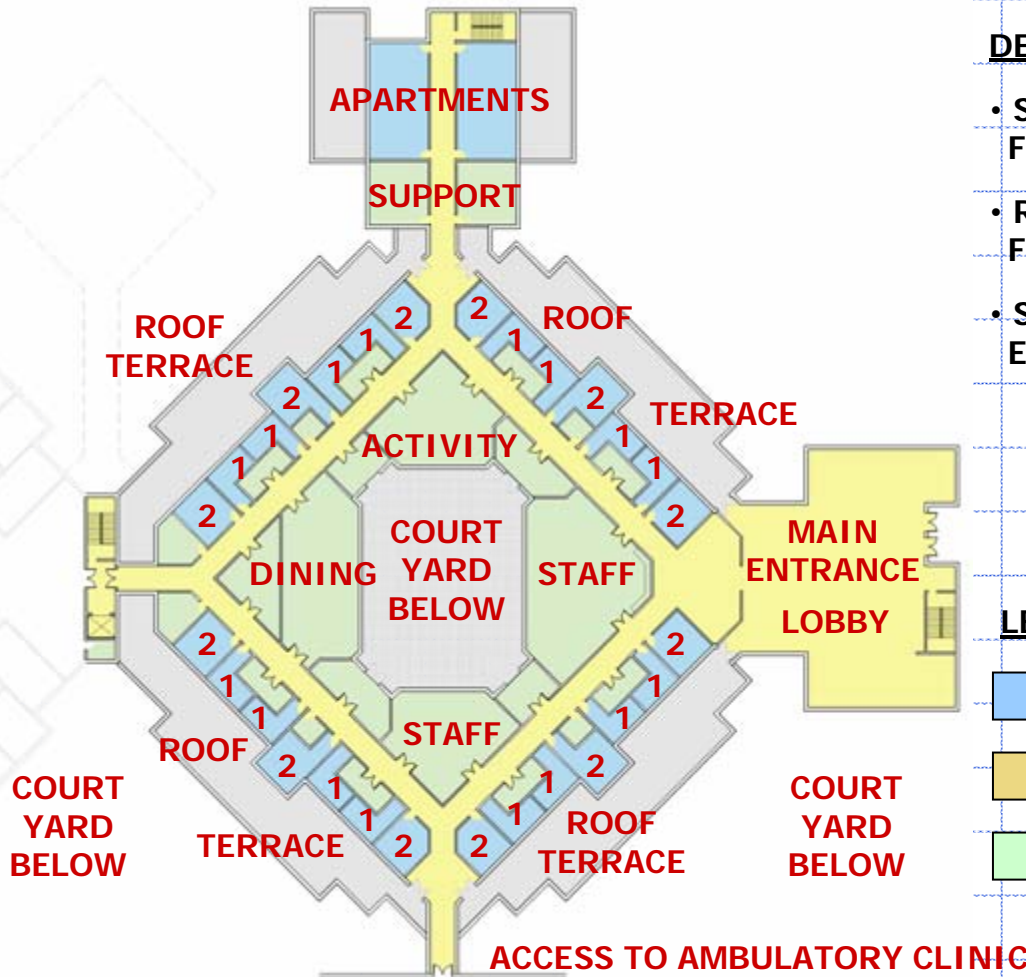
-  PATIENT ROOMS
-  LIVING AREAS
-  PATIENT RECREATION AND STAFF SUPPORT
-  NEIGHBORHOOD

TYPICAL NURSING UNIT NEIGHBORHOOD

Department of Veterans Affairs St. Albans Medical Center Capital Modernization Summary of Services

- | | | |
|----|--------------------------------|-------------------|
| 1. | Nursing Care Center (180 beds) | 137,000 GSF |
| 2. | Domiciliary (40 beds) | 26,500 GSF |

Department of Veterans Affairs St. Albans Medical Center Capital Modernization Conceptual Design of Domiciliary Unit



DESIGN ADVANTAGES

- SHARED AREAS FOR ALL RESIDENTS
- ROOF TERRACES FOR RESIDENTS
- SEPARATE EXTERIOR ENTRANCE

LEGEND

- PATIENT ROOMS
- LIVING AREAS
- PATIENT RECREATION AND STAFF SUPPORT

DOMICILIARY UNIT LEVEL

Department of Veterans Affairs St. Albans Medical Center Capital Modernization Summary of Services

- | | | |
|----|--------------------------------|--------------------|
| 1. | Nursing Care Center (180 beds) | 137,000 GSF |
| 2. | Domiciliary (40 beds) | 26,500 GSF |
| 3. | Ambulatory Care Clinic | 152,000 GSF |

Primary Care Services

Specialty Care Services

- Audiology & Speech Pathology
- Cardiology
- Dental Clinic
- Eye Clinic
- Mental Health Clinic
- Prosthetics
- Pulmonary Medicine
- Rehabilitation Medicine

Diagnostic Services

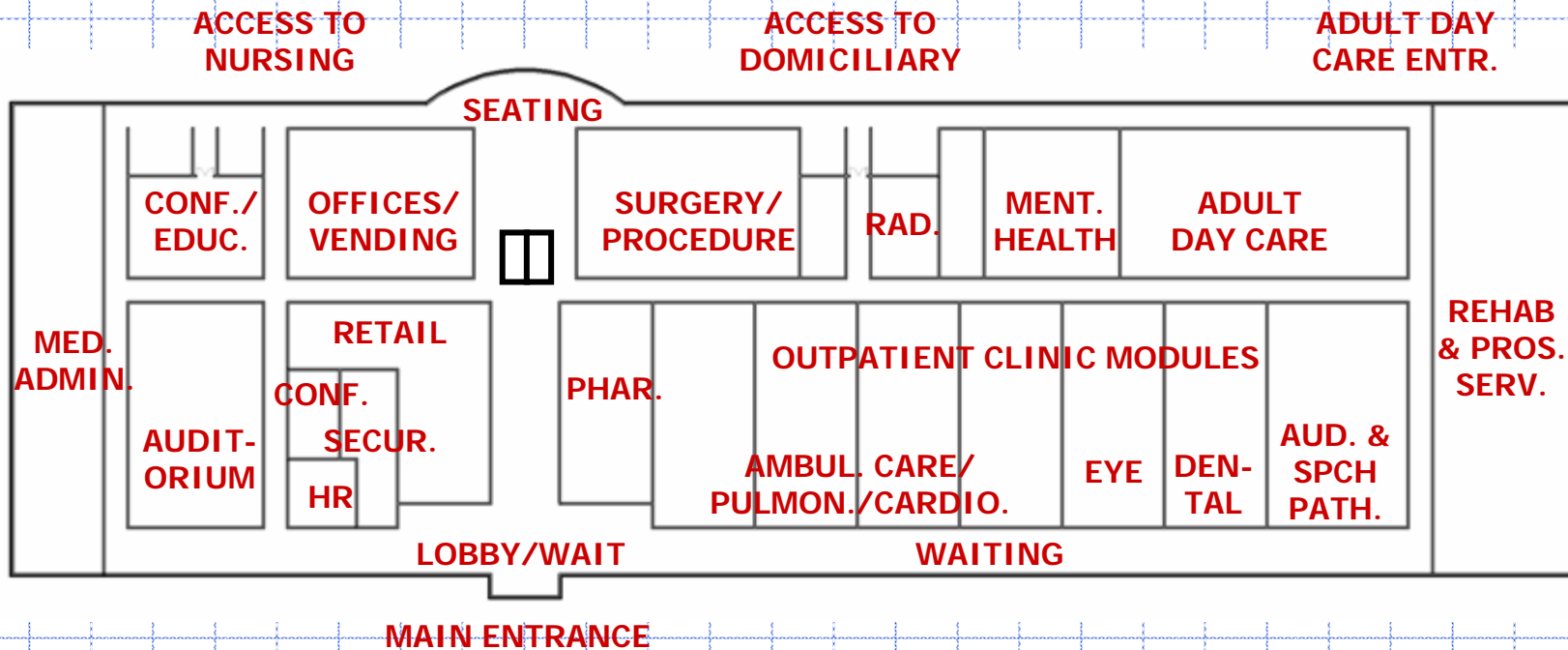
- Radiology

Ambulatory Surgery (minor procedures only)

Pharmacy

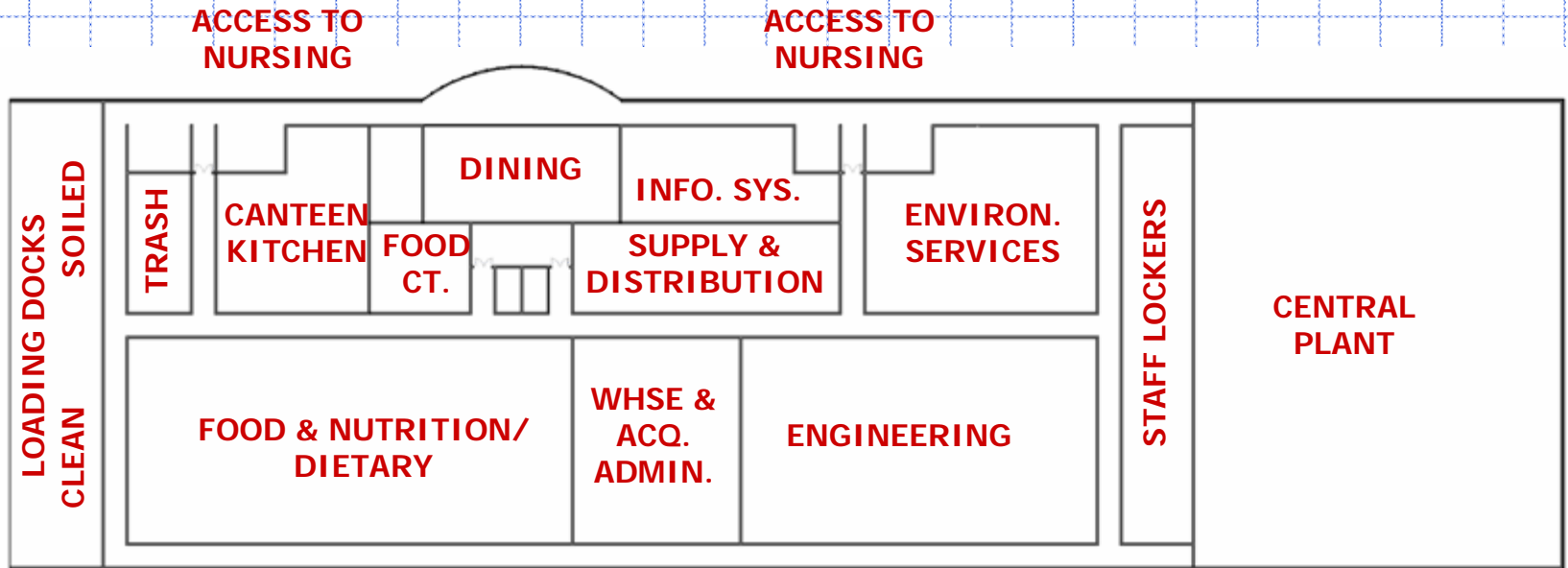
Adult Day Care Program

Department of Veterans Affairs St. Albans Medical Center Capital Modernization Conceptual Design of Ambulatory Care Clinic



AMBULATORY CARE CLINIC - PATIENT LEVEL

Department of Veterans Affairs St. Albans Medical Center Capital Modernization Conceptual Design of Ambulatory Care Clinic



AMBULATORY CARE CLINIC - SERVICE LEVEL

Department of Veterans Affairs St. Albans Medical Center Capital Modernization Summary of Services

- | | | |
|----|---------------------------------------|--------------------|
| 1. | Nursing Care Center (180 beds) | 137,000 GSF |
| 2. | Domiciliary (40 beds) | 26,500 GSF |
| 3. | Ambulatory Care Clinic | 152,000 GSF |

Primary Care Services

Specialty Care Services

- Audiology & Speech Pathology
- Cardiology
- Dental Clinic
- Eye Clinic
- Mental Health Clinic
- Prosthetics
- Pulmonary Medicine
- Rehabilitation Medicine

Diagnostic Services

- Radiology

Ambulatory Surgery (minor procedures only)

Pharmacy

Adult Day Care Program

4. Additional NY Harbor Healthcare Network Services

Shuttle Service

6,000 GSF

Laundry

39,000 GSF

Food Service Building

26,500 GSF

Department of Veterans Affairs St. Albans Medical Center Capital Modernization Summary of Services

- | | | |
|----|---------------------------------------|--------------------|
| 1. | Nursing Care Center (180 beds) | 137,000 GSF |
| 2. | Domiciliary (40 beds) | 26,500 GSF |
| 3. | Ambulatory Care Clinic | 152,000 GSF |

Primary Care Services

Specialty Care Services

- Audiology & Speech Pathology
- Cardiology
- Dental Clinic
- Eye Clinic
- Mental Health Clinic
- Prosthetics
- Pulmonary Medicine
- Rehabilitation Medicine

Diagnostic Services

- Radiology

Ambulatory Surgery (minor procedures only)

Pharmacy

Adult Day Care Program

- | | | |
|----|---|--|
| 4. | Additional NY Harbor Healthcare Network Services | |
|----|---|--|

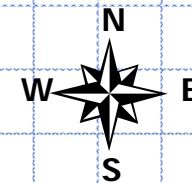
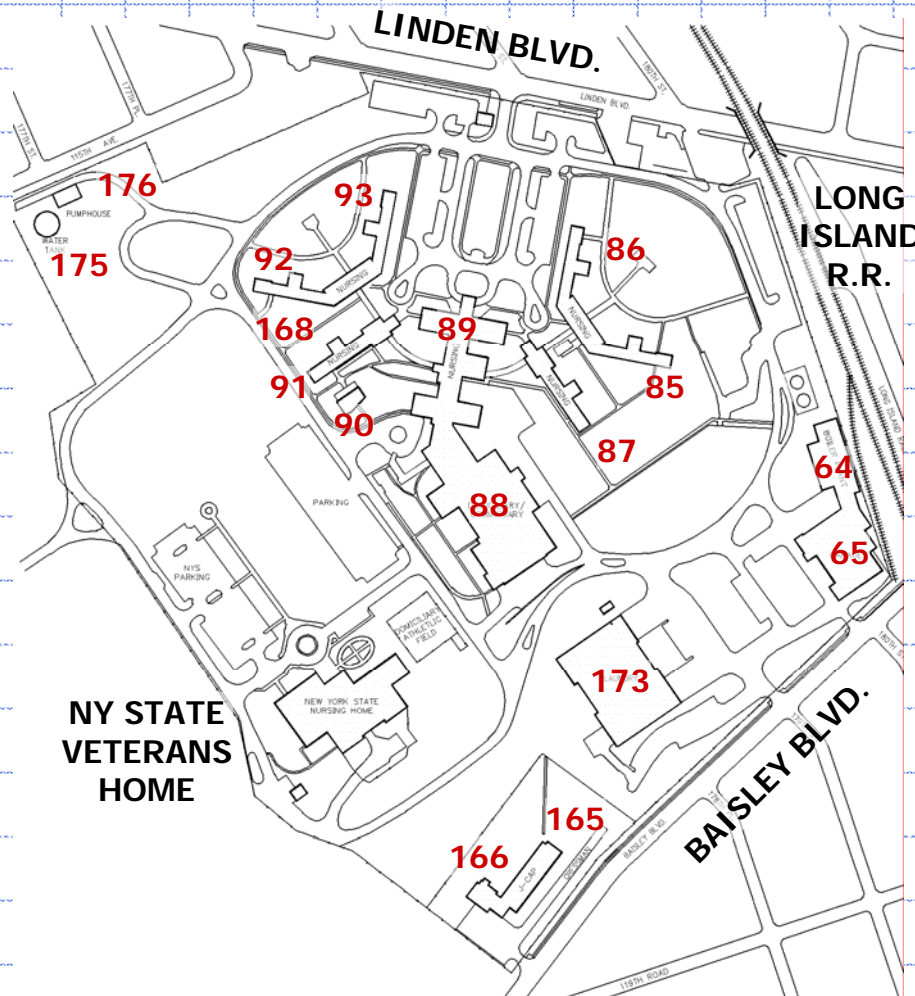
	Shuttle Service	6,000 GSF
--	------------------------	------------------

	Laundry	39,000 GSF
--	----------------	-------------------

	Food Service Building	26,500 GSF
--	------------------------------	-------------------

387,000 GSF

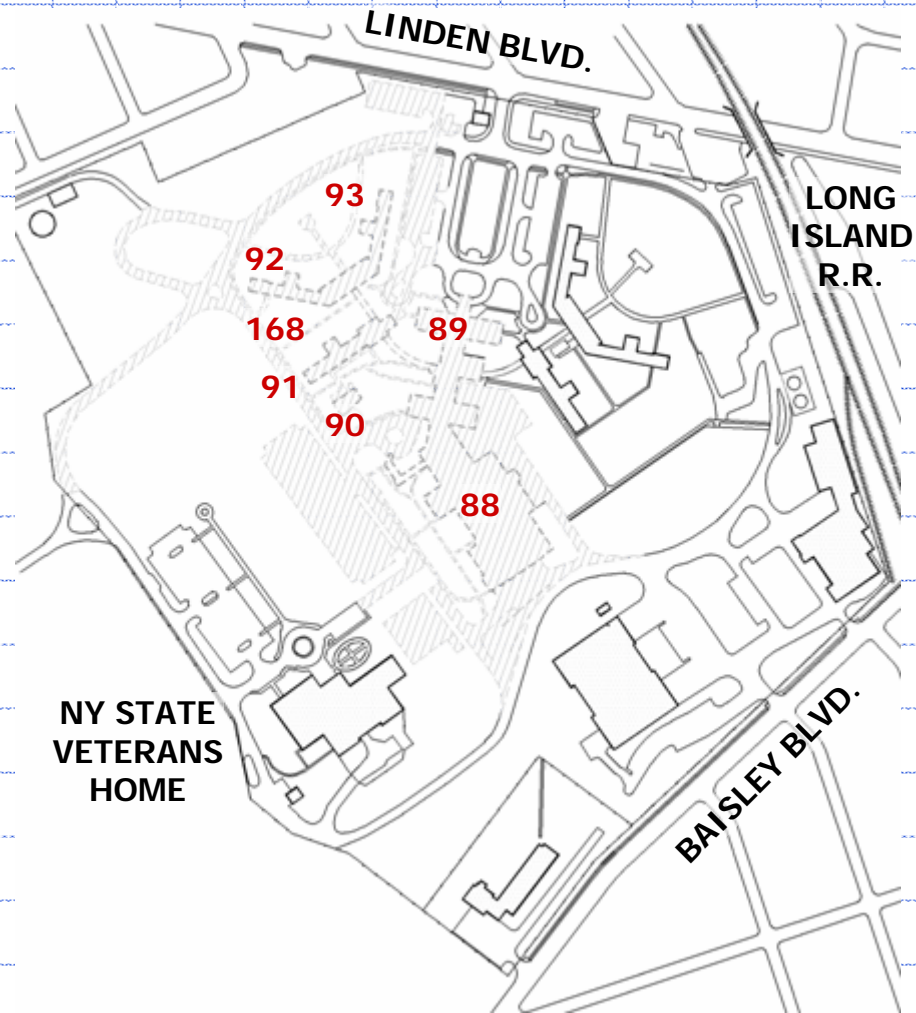
Department of Veterans Affairs St. Albans Medical Center Capital Modernization Existing Site Plan



Department of Veterans Affairs St. Albans Medical Center Capital Modernization Conceptual Demolition Plan

SUMMARY

- DEMOLITION OF BUILDINGS 88, 89, 90, 91, 92, 93, & 168
- ROADWAY & UTILITY DEMOLITION



Department of Veterans Affairs St. Albans Medical Center Capital Modernization Conceptual New Site Plan

SUMMARY

- NURSING CARE CTR.
152,000 GSF
2 LEVEL
- DOMICILIARY UNIT
26,500 GSF
1 LEVEL
- AMBULATORY CARE
120,000 GSF
2 LEVELS/3 MAX.
- SHUTTLE SVC. BLDG.
6,000 GSF
1 LEVEL
- LAUNDRY BLDG.
39,000 GSF
1 LEVEL
- FOOD SERVICE BLDG.
26,500 GSF
1 LEVEL
- ROADS & UTILITIES



DESIGN ADVANTAGES

- MAIN ENTRANCE FOR PATIENTS/VISITORS REMAINS AT LINDEN
- LOW BUILDINGS IMPROVE VIEW FROM NEIGHBORHOOD
- NURSING, CHAPEL, & DOMICILIARY UNITS ENJOY VIEW OF PARK
- SERVICE ACCESS FROM BAISLEY IS POSSIBLE IF DESIRED

Department of Veterans Affairs St. Albans Medical Center Capital Modernization Enhanced Use Lease Opportunities



DESIGN ADVANTAGES

- MAIN ENTRANCE FOR PATIENTS/VISITORS REMAINS AT LINDEN
- LOW BUILDINGS IMPROVE VIEW FROM NEIGHBORHOOD
- MAXIMIZE AVAILABLE AREA FOR REUSE
- CHAPEL HAS UNIQUE IDENTITY
- AUDITORIUM HAS BEEN INCLUDED IN EDUCATION SPACE WITHIN AMBULATORY CARE CLINIC

Department of Veterans Affairs
St. Albans Medical Center Capital Modernization
Local Advisory Panel Briefing, January 22, 2007

