

Department of Veterans Affairs CARES Capital and Reuse Study

VA New York Harbor Healthcare System
St. Albans Campus

May 5, 2005



VA New York Harbor Healthcare System Sites

- One of five VISN 3 facilities – three of which (Hudson Valley, New Jersey and NY Harbor) are integrated health care systems
- VA NY Harbor Healthcare System consists of 3 campuses located in Bay Ridge, Brooklyn, East-side Manhattan and St. Albans, Queens
- Ambulatory care centers are located at each of the three campuses
- VA NYHHS also operates Community Based Outpatient Clinics in Harlem, Chelsea, SoHo, downtown Brooklyn and Staten Island

New York, Brooklyn, and St. Albans Campuses

- New York and Brooklyn
 - Medical, surgical and psychiatric facilities
 - » NY 171 operating beds
 - » BK 147 operating beds
- St. Albans
 - » Primary & Extended Care Facility
 - » 181 Nursing Home operating beds
 - » 50 Domiciliary operating beds

Comprehensive Health Care

Comprehensive health care is provided through primary, specialty and long-term care services:

New York

- Acute Medicine
- Surgery
- Acute Psychiatry
- Neurology
- Rehabilitation Medicine
- Emergency/ Critical Care
- Home Care

Brooklyn

- Acute Medicine
- Surgery
- Psychiatry
- Residential Substance Abuse
- Emergency/ Critical Care
- Home Care

St. Albans

- Geriatrics and extended care
- Extended care rehab
- Home care

Specialty Center-Based Care

New York: Referral Center for Cardiac Surgery, Neurosurgery, Urology and HIV/AIDS care

Brooklyn: Cancer Care and Non-invasive Cardiology

St. Albans: Dementia-geriatric care and Domiciliary

Forecasting VA Health Care Demand

Key Concepts

VA National Level Demand Forecasts

CARES Implementation Category	Inpatient Medicine Bed Days of Care	Outpatient Primary Care Clinic Stops
FY03 Actual	2.0 million	15.6 million
FY13 Projected	2.3 million	17.7 million
% Change FY13 – FY03	11%	13%
FY23 Projected	2.0 million	16.3 million
% Change FY23 – FY03	0%	4%

Projected Enrolled Veteran Population

- As of FY 2003:
 - 25 million veterans
 - 7 million of these are enrolled in VA
- Enrollment forecasted 20 years into the future by:
 - Age
 - Gender
 - Priority
 - Geographic Area

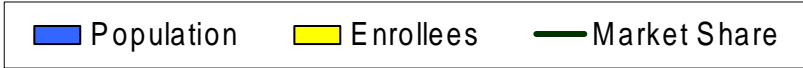
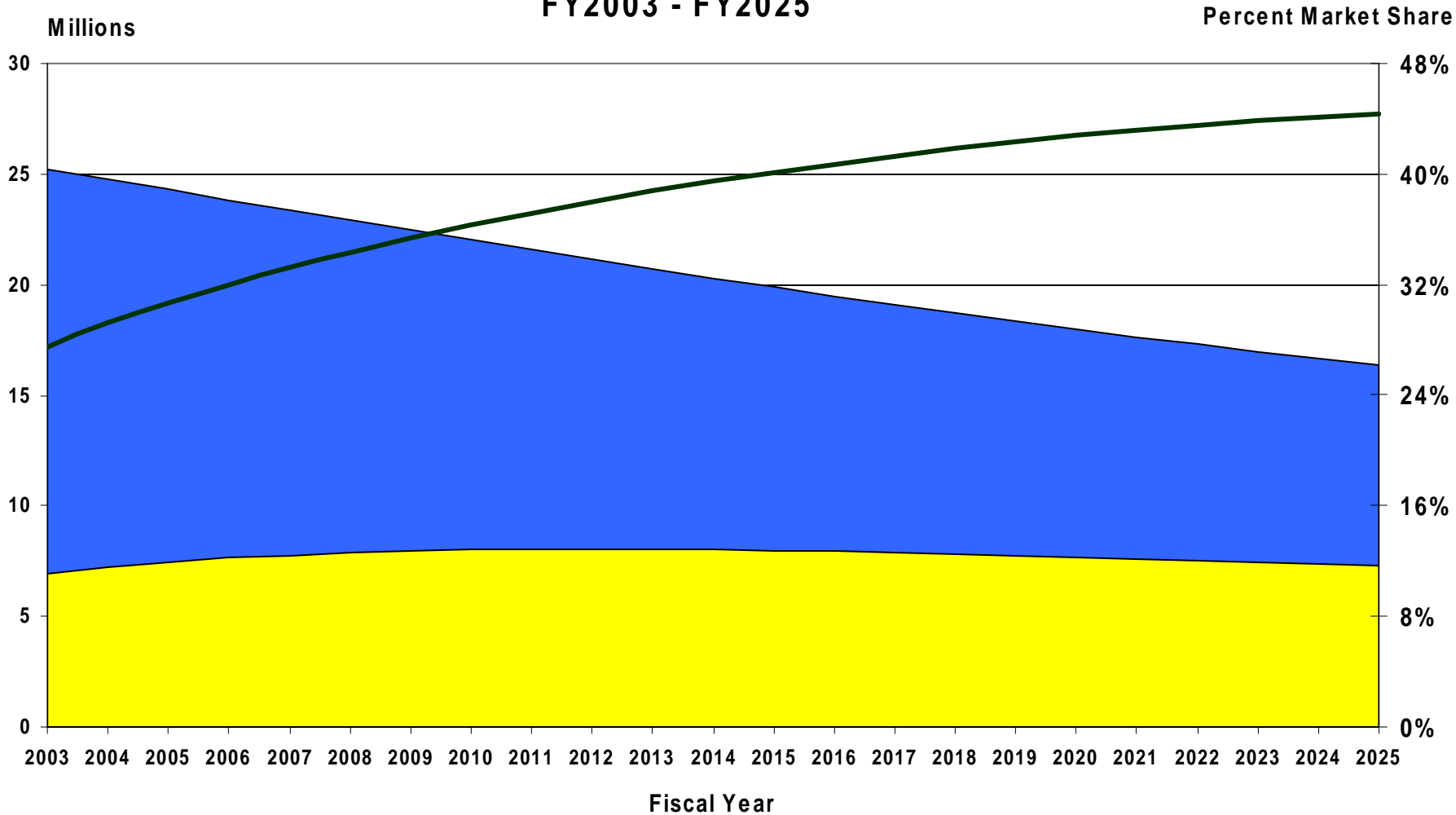
Inpatient and Outpatient Demand Forecasts

- CARES Business Plan Studies aggregated by:
 - 25 Categories of Care
 - Geographic Area (where enrollee lives)
 - VA Treating Facility

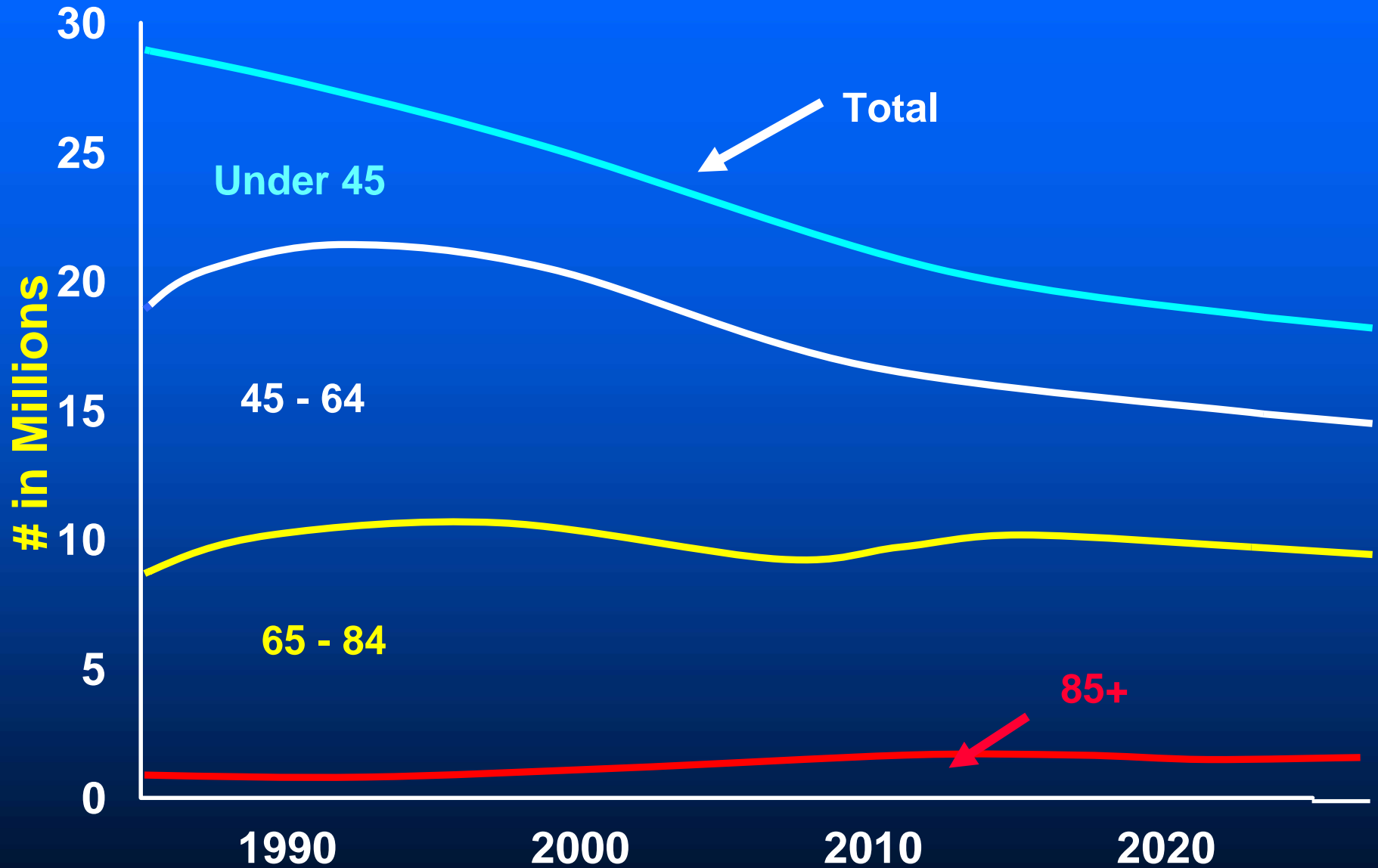
Reliance Factor Issues

- Reliance on VA Services varies by:
 - Enrollee preference for VA services vs. other health care options
 - VA supply in a given geographic area
 - » **Wait lists**
 - » **Types of services provided at each facility**
 - » **Geographic location of facility**

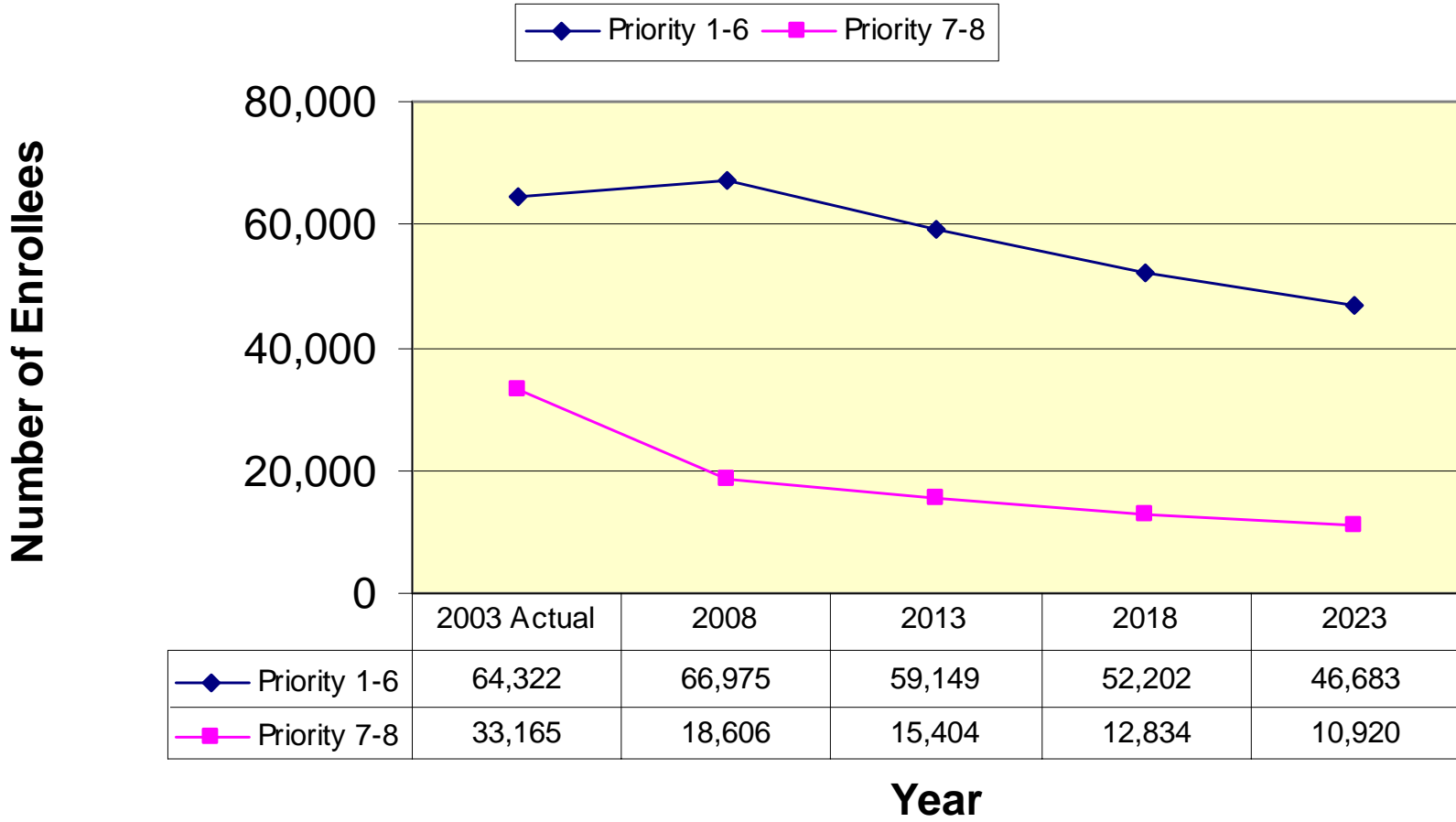
Total Veterans, National Population & Enrollee Projections FY2003 - FY2025



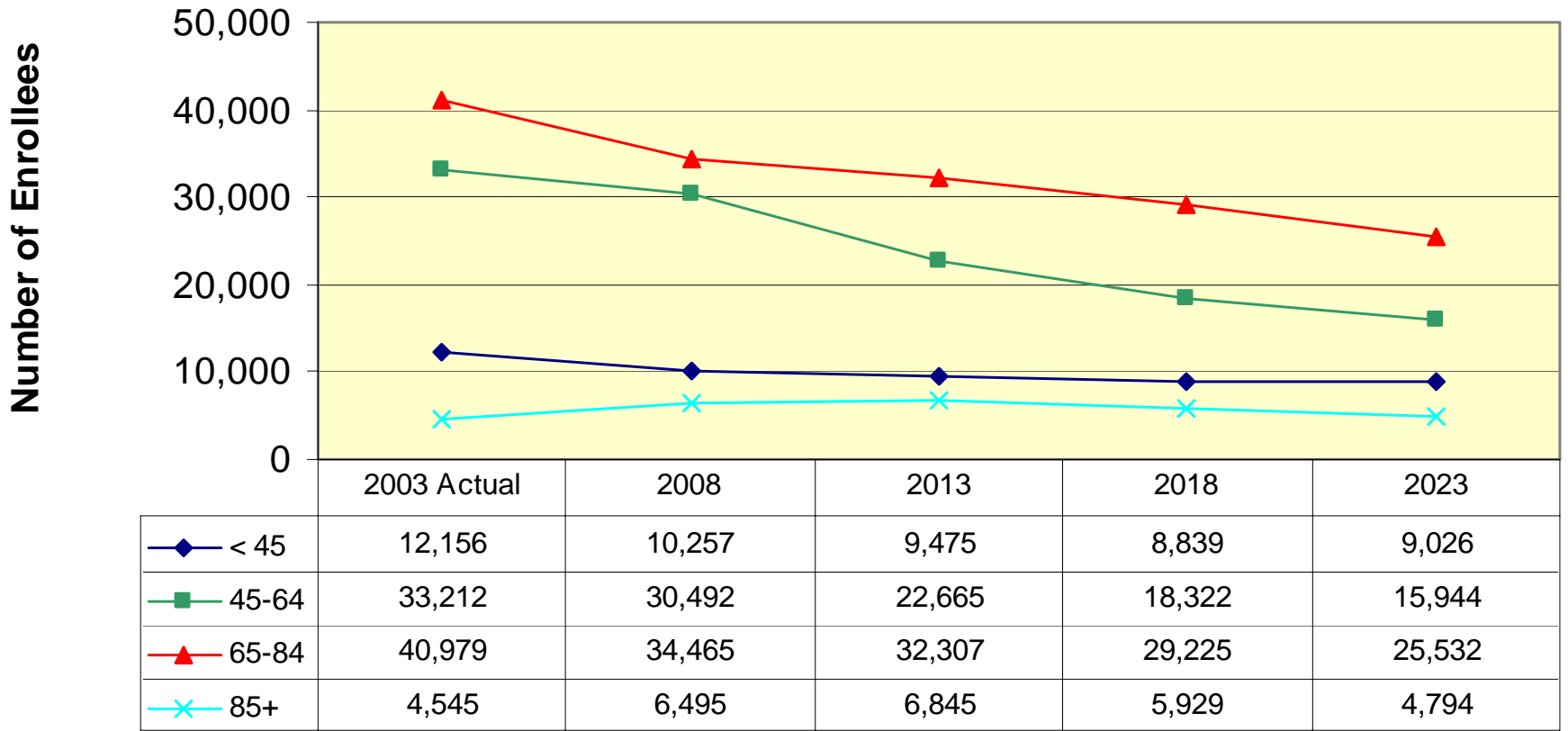
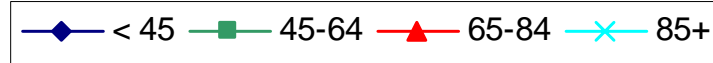
Only the 85+ Age Group is Projected to Increase



Enrollment by Priority Group (VA NY Harbor HCS Catchment Area)



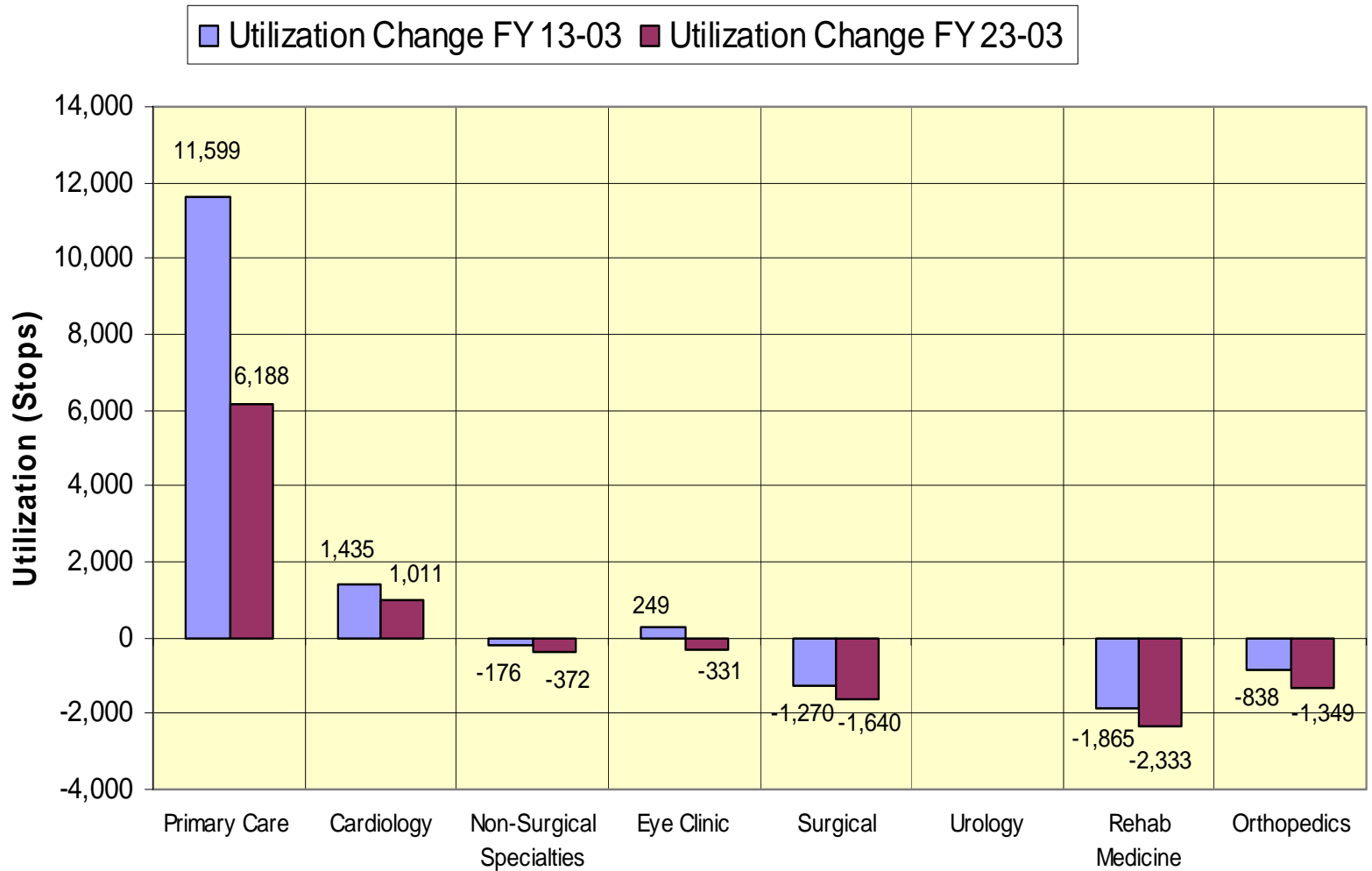
Enrollment by Age Group (VA NY Harbor HCS Catchment Area)



Year

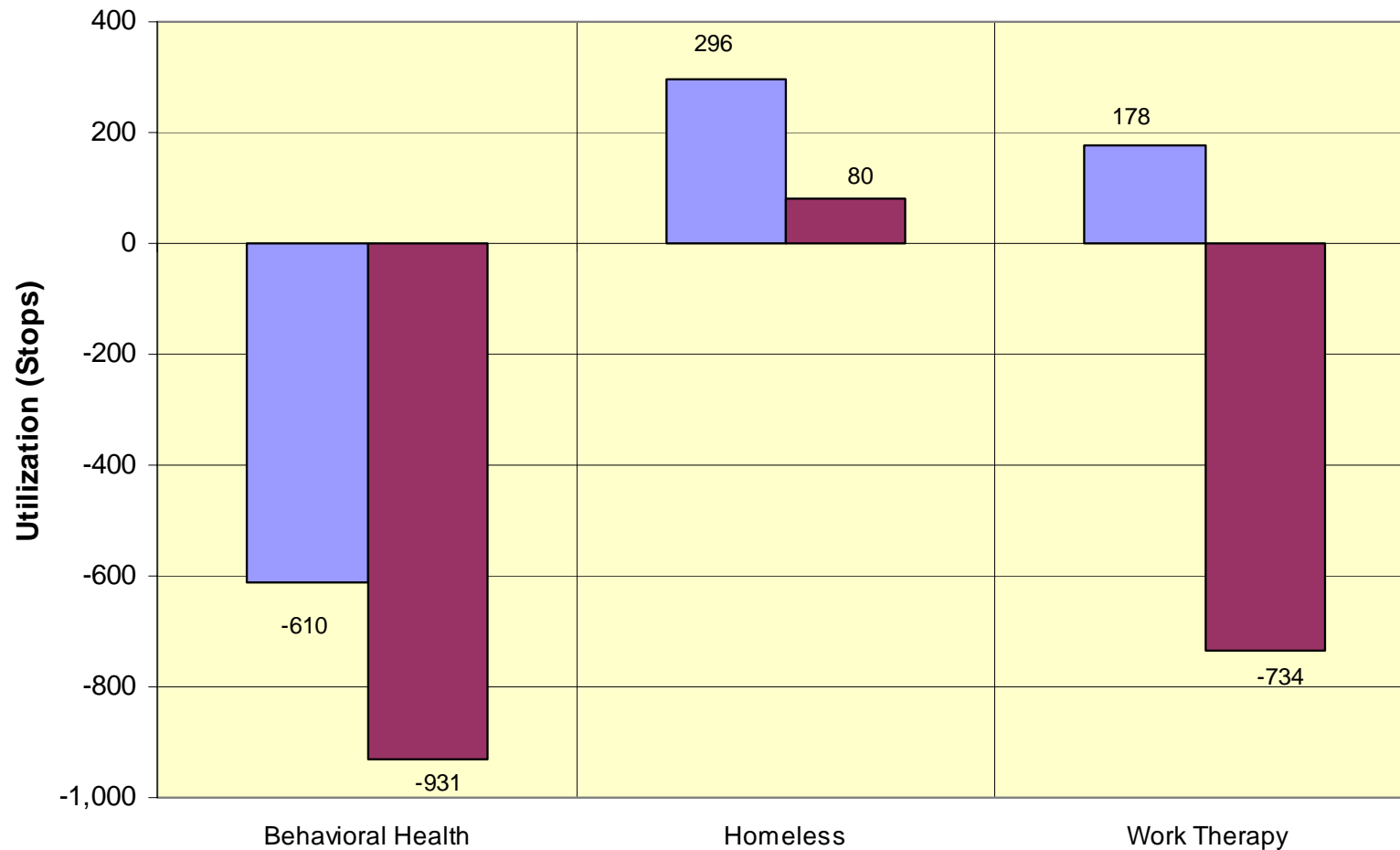
Utilization

St. Albans Campus Change in Utilization (Ambulatory)

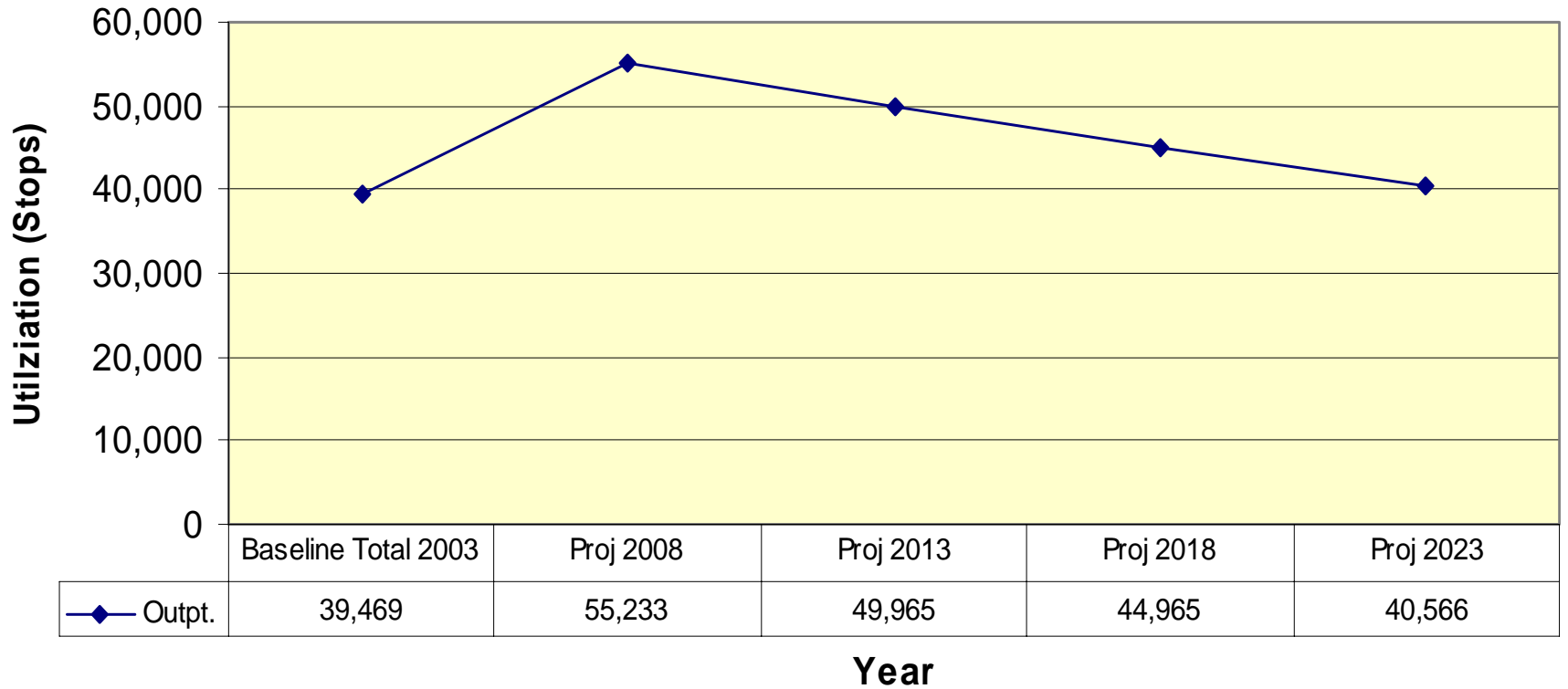


St. Albans Campus Change in Utilization (Outpatient Mental Health Program)

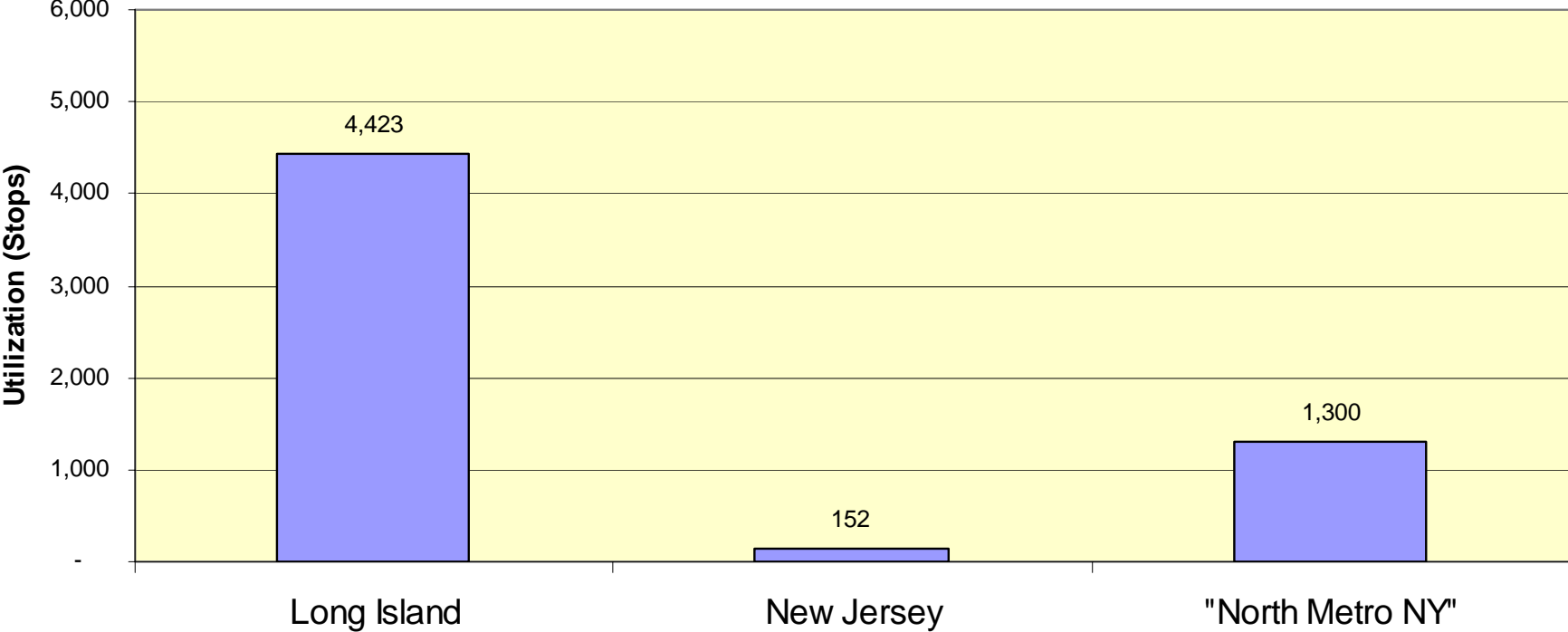
Utilization Change FY 13-03 Utilization Change FY 23-03



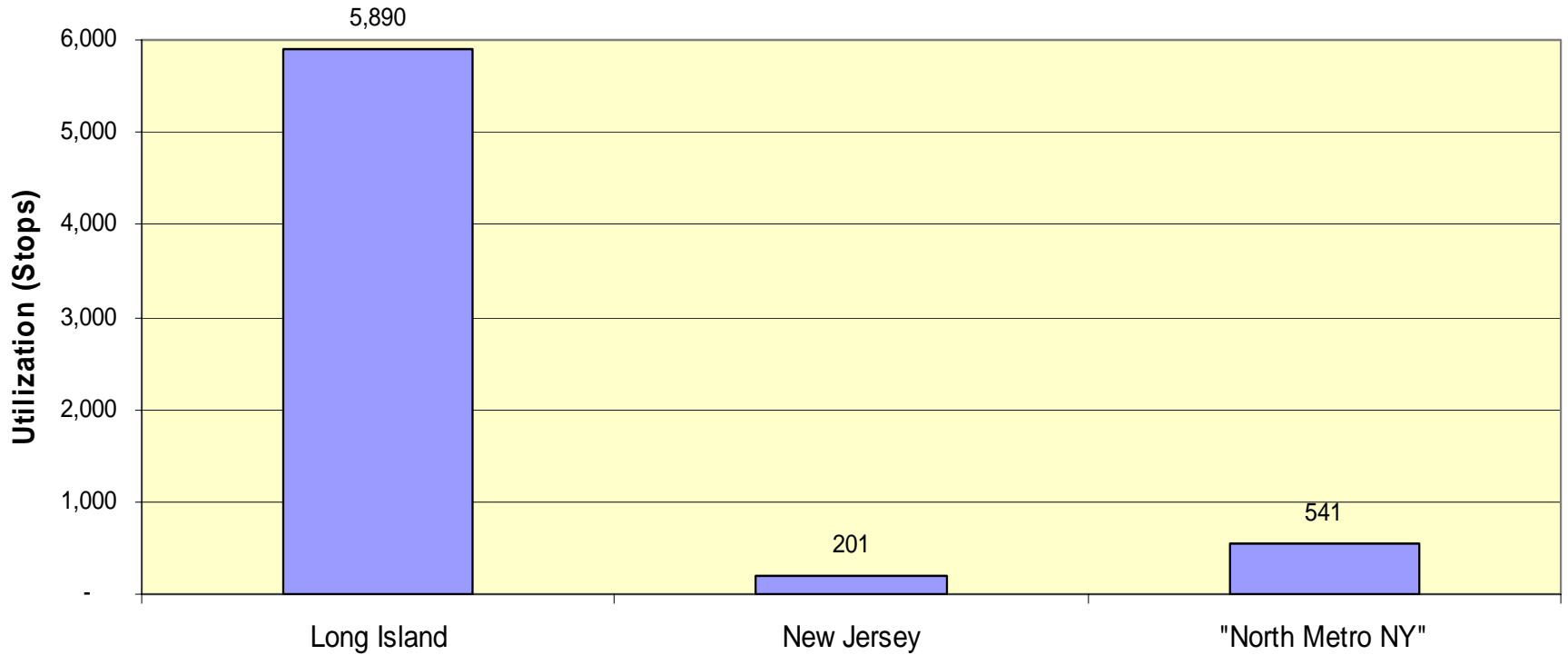
St. Albans Projected Total Outpatient Workload from VISN 03



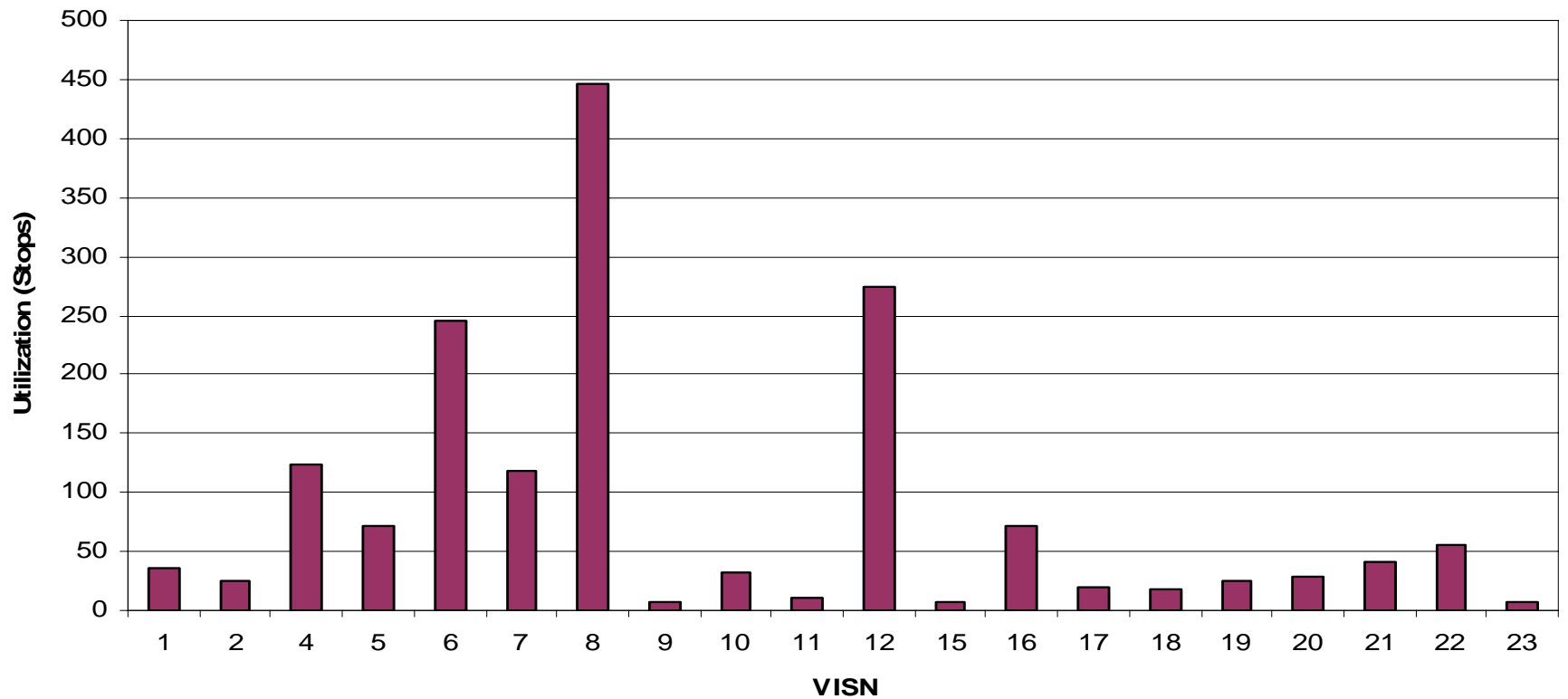
**St. Albans 2003 Actual Ambulatory Workload from VISN 3
Long, Island, New Jersey, and "North Metro NY" Markets**



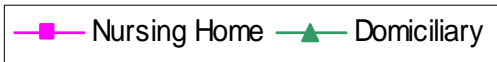
St. Albans 2023 Projected Ambulatory Workload from VISN 3 Long Island, New Jersey and "North Metro NY" Markets



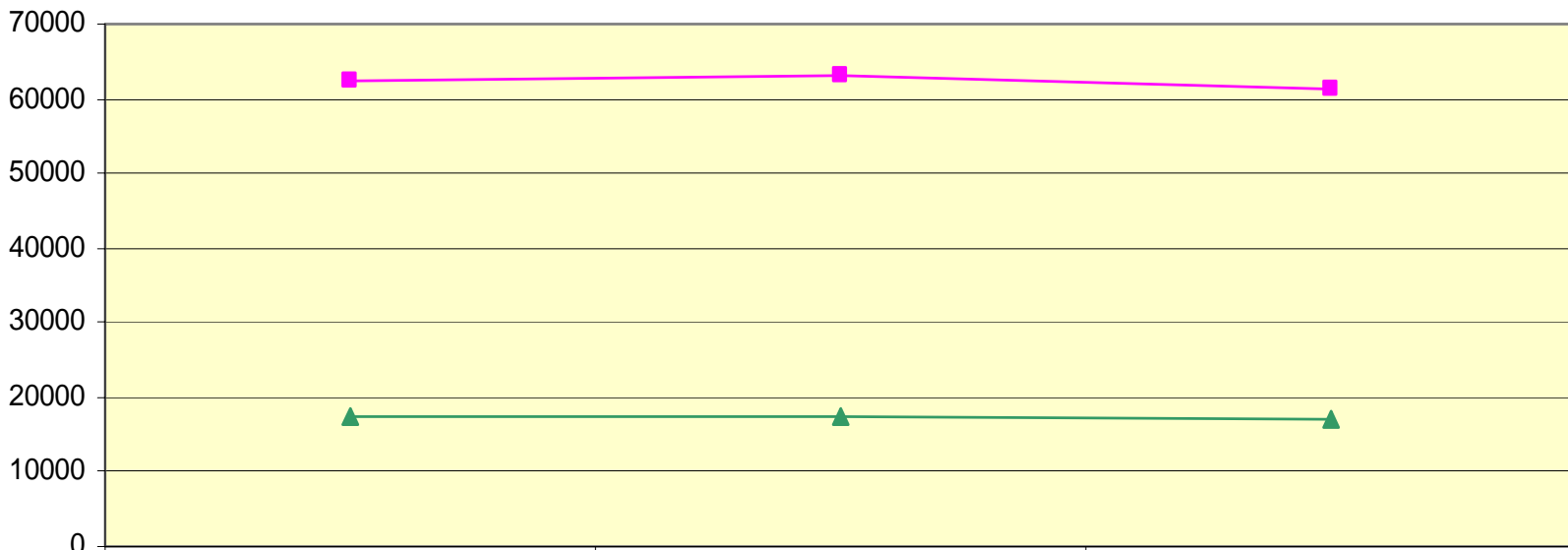
Ambulatory Workload from Other VISNs for St. Albans Campus



Historical Long Term Care Workload



Nursing Home and Dom BDOC



	2002	2003	2004
Nursing Home	62436	63003	61312
Domiciliary	17321	17245	17072

Fiscal Year

Summary

- LTC demand forecasts have not been released at this time
- These data do not show the effects of access, quality, cost, medical affiliation, education and research that need to be considered in this study