

05515500 KANKAKEE RIVER AT DAVIS, IN

LOCATION.--Lat 41°24'00", long 86°42'04", in SE¹/₄NE¹/₄ sec.13, T.34 N., R.3 W., Starke County, Hydrologic Unit 07120001, (KINGSFORD HEIGHTS, IN quadrangle), on left bank at downstream side of bridge on U.S. Highway 30 at Davis, 0.5 mi downstream from Mill Creek, 4 mi east of Hanna, and at mile 110.9.

DRAINAGE AREA.--537 mi², of which 137 mi² does not contribute directly to surface runoff.

PERIOD OF RECORD.--July 1905 to July 1906 and October 1924 to current year. Monthly discharge only for some periods, published in WSP 1308.

REVISED RECORDS.--WSP 1338: 1953. WSP 2115: Drainage area.

GAGE.--Water-stage recorder and Acoustic Doppler Velocity meter. Datum of gage is 664.68 ft above National Geodetic Vertical Datum of 1929. July 13, 1905, to July 21, 1906, nonrecording gage at site 50 ft downstream at different datum. July 28, 1925, to May 18, 1929, nonrecording gage on bridge 0.5 mi downstream at different datum. Apr. 19, 1931, to Nov. 3, 1953, nonrecording gage at present site and datum.

REMARKS.--Records fair except for estimated daily discharges, which are poor.

DISCHARGE, CUBIC FEET PER SECOND
WATER YEAR OCTOBER 2004 TO SEPTEMBER 2005
DAILY MEAN VALUES

DAY	OCT	NOV	DEC	JAN	FEB	MAR	APR	MAY	JUN	JUL	AUG	SEP
1	276	310	766	685	696	937	680	468	339	272	246	214
2	286	382	899	677	665	903	670	459	335	247	228	212
3	287	443	854	753	644	873	654	452	344	234	210	216
4	285	466	768	983	625	851	637	448	348	231	214	216
5	281	515	690	1,030	618	880	619	444	354	254	226	209
6	277	502	653	1,000	615	971	611	436	384	256	221	208
7	273	463	676	909	680	1,020	596	432	386	249	214	205
8	274	425	840	834	860	1,020	584	428	372	237	205	202
9	286	398	831	777	964	967	574	424	359	226	196	200
10	285	384	765	732	941	914	560	425	352	217	194	199
11	283	376	719	738	889	879	547	424	348	212	201	198
12	283	365	695	978	841	846	539	431	346	211	218	197
13	283	355	655	1,590	835	805	533	430	367	215	276	197
14	284	345	627	1,840	1,130	776	524	426	422	216	362	201
15	290	342	597	1,750	1,380	758	510	417	401	e225	346	222
16	296	344	575	1,620	1,450	746	509	412	378	248	313	261
17	297	345	561	1,510	1,420	741	522	407	360	250	292	279
18	295	347	549	1,360	1,300	743	512	407	343	253	276	261
19	293	371	549	1,280	1,190	749	505	416	334	266	268	249
20	295	410	536	1,170	1,110	756	499	441	323	246	293	258
21	289	408	525	1,090	1,120	738	491	429	310	252	335	253
22	290	397	503	1,040	1,120	716	494	409	293	314	312	246
23	301	386	484	969	1,070	700	529	400	278	308	284	243
24	335	380	e455	918	1,030	686	527	389	274	277	267	238
25	329	400	e450	874	1,000	687	534	375	267	263	254	240
26	318	418	e440	839	964	714	522	367	263	281	248	260
27	310	491	e435	786	939	738	504	362	264	310	242	262
28	301	730	e430	740	936	728	495	362	261	312	234	259
29	302	772	e432	719	---	706	484	359	267	284	228	291
30	311	716	e436	700	---	689	480	356	272	269	221	305
31	310	---	548	704	---	688	---	348	---	257	220	---
TOTAL	9,105	12,986	18,943	31,595	27,032	24,925	16,445	12,783	9,944	7,892	7,844	7,001
MEAN	294	433	611	1,019	965	804	548	412	331	255	253	233
MAX	335	772	899	1,840	1,450	1,020	680	468	422	314	362	305
MIN	273	310	430	677	615	686	480	348	261	211	194	197
CFSM	0.55	0.81	1.14	1.90	1.80	1.50	1.02	0.77	0.62	0.47	0.47	0.43
IN.	0.63	0.90	1.31	2.19	1.87	1.73	1.14	0.89	0.69	0.55	0.54	0.48

STATISTICS OF MONTHLY MEAN DATA FOR WATER YEARS 1926 - 2005, BY WATER YEAR (WY)

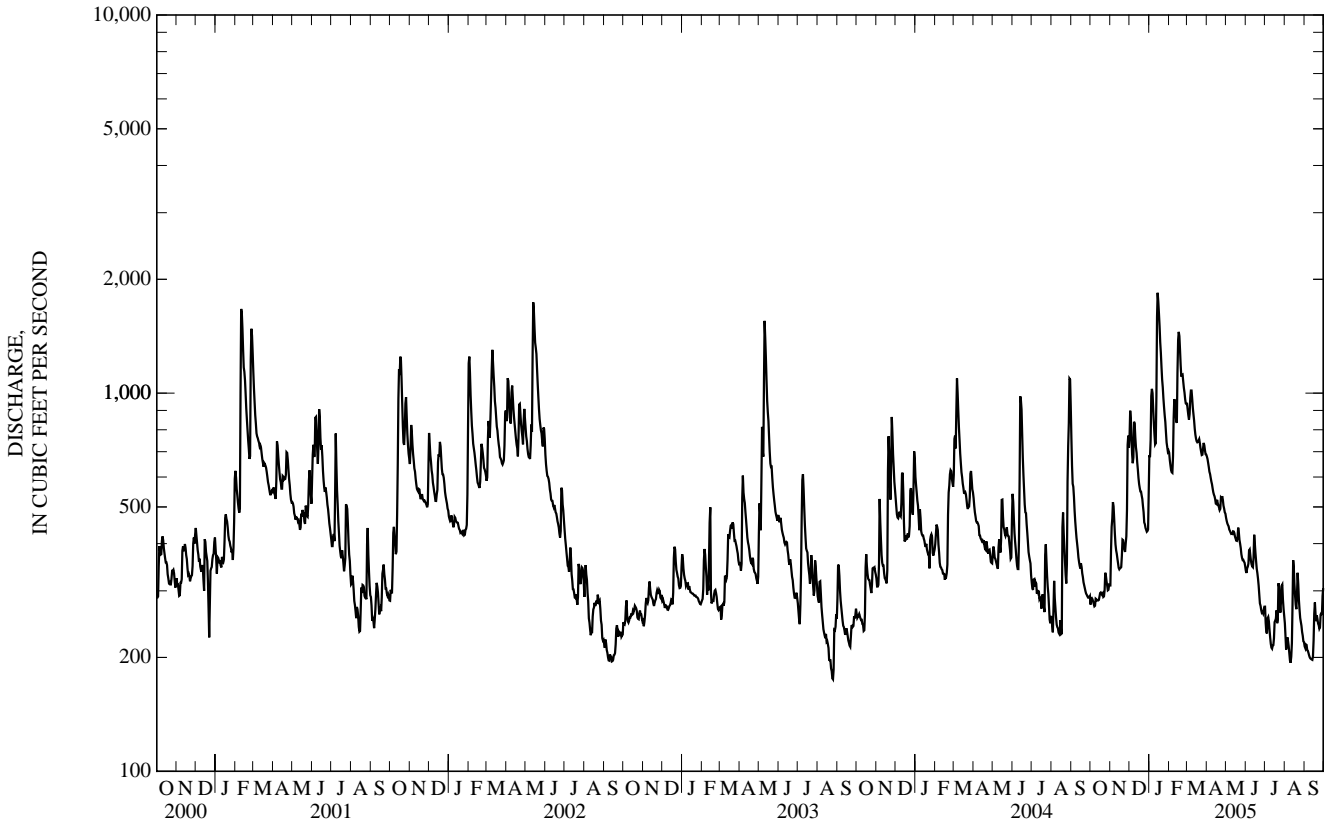
MEAN	407	474	517	548	588	715	729	626	529	422	358	343
MAX	1,162	988	1,191	1,275	990	1,376	1,218	1,067	1,076	983	804	718
(WY)	(1955)	(1991)	(1928)	(1993)	(1991)	(1985)	(1982)	(1983)	(1996)	(1996)	(1996)	(1972)
MIN	198	230	236	235	236	325	397	296	248	205	174	179
(WY)	(1964)	(1965)	(1964)	(1963)	(1964)	(1934)	(2003)	(1934)	(1934)	(1934)	(1941)	(1941)

ILLINOIS RIVER BASIN

05515500 KANKAKEE RIVER AT DAVIS, IN—Continued

SUMMARY STATISTICS	FOR 2004 CALENDAR YEAR		FOR 2005 WATER YEAR		WATER YEARS 1926 - 2005	
ANNUAL TOTAL	160,911		186,495		521	
ANNUAL MEAN	440		511		293	
HIGHEST ANNUAL MEAN					823	
LOWEST ANNUAL MEAN					293	
HIGHEST DAILY MEAN	1,090	Mar 6	1,840	Jan 14	1,920	Mar 20, 1982
LOWEST DAILY MEAN	231	Aug 13	194	Aug 10	154	Aug 30, 1941
ANNUAL SEVEN-DAY MINIMUM	236	Aug 11	199	Sep 8	156	Aug 28, 1941
MAXIMUM PEAK FLOW			1,930		1,930	
MAXIMUM PEAK STAGE			13.05		13.79	
ANNUAL RUNOFF (CFSM)	0.819		0.951		0.970	
ANNUAL RUNOFF (INCHES)	11.15		12.92		13.18	
10 PERCENT EXCEEDS	654		936		886	
50 PERCENT EXCEEDS	398		410		448	
90 PERCENT EXCEEDS	286		230		275	

e Estimated



05516500 YELLOW RIVER AT PLYMOUTH, IN

LOCATION.--Lat 41°20'25", long 86°18'16", in SE $\frac{1}{4}$ NW $\frac{1}{4}$ sec.13, T.33 N., R.2 E., Marshall County, Hydrologic Unit 07120001. (PLYMOUTH, IN quadrangle), on left bank 50 ft upstream from LaPorte Street footbridge in Plymouth, 1.1 mi downstream from Elmer Seltentright (formerly Baker) Ditch, 8.1 mi upstream from Wolf Creek, and at mile 40.3.

DRAINAGE AREA.--294 mi², of which 22 mi² does not contribute directly to surface runoff.

PERIOD OF RECORD.--July 1948 to current year.

REVISED RECORDS.--WSP 1338: 1950-51. WSP 2115: Drainage area. WDR IN-73-1: 1972(M).

GAGE.--Water-stage recorder. Datum of gage is 764.78 ft above National Geodetic Vertical Datum of 1929 (levels by State of Indiana, Department of Natural Resources). Prior to Aug. 27, 1959, nonrecording gage at same site and datum.

REMARKS.--Records fair except for estimated daily discharges, which are poor.

DISCHARGE, CUBIC FEET PER SECOND
WATER YEAR OCTOBER 2004 TO SEPTEMBER 2005
DAILY MEAN VALUES

DAY	OCT	NOV	DEC	JAN	FEB	MAR	APR	MAY	JUN	JUL	AUG	SEP
1	68	77	705	475	e180	431	256	115	78	66	65	36
2	69	104	983	389	e170	399	243	113	79	59	58	36
3	67	138	735	603	e169	362	226	110	82	56	53	37
4	65	161	431	1,000	e164	348	209	107	79	56	51	36
5	63	263	336	1,250	e158	453	200	104	79	66	51	36
6	61	193	306	1,110	e164	711	194	103	80	62	48	36
7	60	146	513	658	e260	757	189	103	77	56	45	36
8	61	120	1,010	455	735	632	182	102	73	54	44	35
9	66	103	1,040	379	926	437	172	100	69	50	45	36
10	66	96	650	349	709	361	167	100	67	48	44	34
11	62	90	551	410	494	334	161	98	66	48	47	32
12	61	83	517	941	426	312	156	99	71	47	49	31
13	62	78	431	1,930	543	278	155	97	231	45	74	31
14	62	72	351	2,950	1,140	267	144	101	483	46	171	43
15	60	69	306	3,300	1,890	258	136	98	267	50	157	43
16	60	71	285	2,900	2,240	269	134	92	175	59	89	85
17	58	75	265	2,140	2,130	297	135	88	136	64	67	62
18	59	78	253	1,430	1,680	301	137	85	118	68	61	51
19	63	115	241	865	1,100	311	134	98	107	57	55	50
20	65	168	e180	550	669	387	134	105	98	58	73	47
21	65	157	e166	453	703	330	131	94	90	74	97	43
22	66	133	e136	392	813	291	141	89	85	127	83	40
23	74	121	e132	e335	699	285	153	89	80	110	62	41
24	88	124	e127	e312	571	271	143	87	77	69	53	38
25	76	242	e126	e291	509	266	136	84	83	69	48	52
26	71	290	e123	e270	456	360	133	82	74	129	47	85
27	69	493	e123	e230	410	391	131	81	68	294	44	77
28	67	881	e119	e210	392	348	123	82	64	248	41	70
29	68	865	e116	e205	---	302	120	81	63	130	40	99
30	73	495	e113	e200	---	270	118	80	68	91	40	103
31	72	---	253	e190	---	271	---	78	---	74	39	---
TOTAL	2,047	6,101	11,623	27,172	20,500	11,290	4,793	2,945	3,267	2,530	1,941	1,481
MEAN	66.0	203	375	877	732	364	160	95.0	109	81.6	62.6	49.4
MAX	88	881	1,040	3,300	2,240	757	256	115	483	294	171	103
MIN	58	69	113	190	158	258	118	78	63	45	39	31
CFSM	0.22	0.69	1.28	2.98	2.49	1.24	0.54	0.32	0.37	0.28	0.21	0.17
IN.	0.26	0.77	1.47	3.44	2.59	1.43	0.61	0.37	0.41	0.32	0.25	0.19

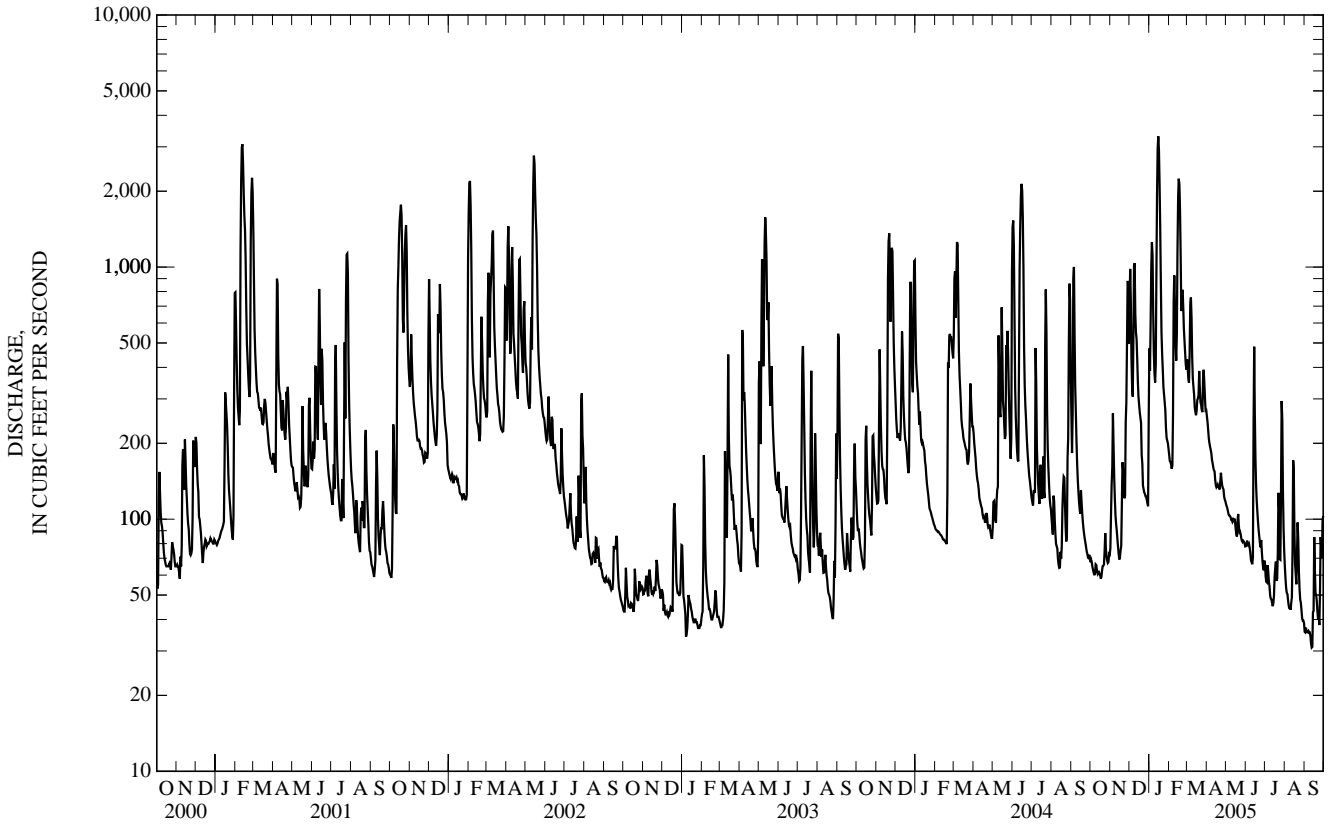
STATISTICS OF MONTHLY MEAN DATA FOR WATER YEARS 1949 - 2005, BY WATER YEAR (WY)

MEAN	151	193	269	311	384	512	482	302	262	173	108	93.5
MAX	1,583	689	733	1,244	1,132	1,586	1,190	1,098	850	711	494	536
(WY)	(1955)	(1993)	(1983)	(1993)	(2001)	(1982)	(1950)	(1996)	(1996)	(1996)	(1958)	(1972)
MIN	23.7	20.9	30.4	26.5	35.7	79.5	99.8	65.4	51.2	39.4	31.2	22.4
(WY)	(1965)	(1965)	(1954)	(1963)	(1963)	(1957)	(1971)	(1958)	(1988)	(1988)	(1949)	(1949)

05516500 YELLOW RIVER AT PLYMOUTH, IN—Continued

SUMMARY STATISTICS	FOR 2004 CALENDAR YEAR		FOR 2005 WATER YEAR		WATER YEARS 1949 - 2005	
ANNUAL TOTAL	95,620		95,690			
ANNUAL MEAN	261		262		269	
HIGHEST ANNUAL MEAN					453 1993	
LOWEST ANNUAL MEAN					119 1957	
HIGHEST DAILY MEAN	2,140	Jun 15	3,300	Jan 15	5,310	Oct 13, 1954
LOWEST DAILY MEAN	58	Oct 17	31	Sep 12	13	Dec 3, 1964
ANNUAL SEVEN-DAY MINIMUM	60	Oct 12	34	Sep 7	15	Dec 2, 1964
MAXIMUM PEAK FLOW			3,350	Jan 15	5,390	Oct 12, 1954
MAXIMUM PEAK STAGE			14.57	Jan 15	17.13	Oct 12, 1954
ANNUAL RUNOFF (CFSM)	0.889		0.892		0.916	
ANNUAL RUNOFF (INCHES)	12.10		12.11		12.44	
10 PERCENT EXCEEDS	552		615		670	
50 PERCENT EXCEEDS	138		113		131	
90 PERCENT EXCEEDS	72		48		40	

e Estimated



05517000 YELLOW RIVER AT KNOX, IN

LOCATION.--Lat 41°18'10", long 86°37'14", in SW¹/₄SW¹/₄ sec.14, T.33 N., R.2 W., Starke County, Hydrologic Unit 07120001, (KNOX EAST, IN quadrangle), on right bank 40 ft upstream from bridge on U.S. Highway 35 in Knox, 0.3 mi north of Knox, 1.4 mi downstream from Eagle Creek, and at mile 11.6.

DRAINAGE AREA.--435 mi², of which 51 mi² does not contribute directly to surface runoff.

PERIOD OF RECORD.--August 1905 to July 1906, August 1943 to current year.

REVISED RECORDS.--WSP 1278: 1952. WSP 2115: Drainage area.

GAGE.--Water-stage recorder. Datum of gage is 679.93 ft above National Geodetic Vertical Datum of 1929 (levels by State of Indiana, Department of Natural Resources). August 1905 to July 1906, nonrecording gage at same site at different datum. August 1943 to July 17, 1952, nonrecording gage at same site and datum.

REMARKS.--Records good except for estimated daily discharges, which are poor.

DISCHARGE, CUBIC FEET PER SECOND
WATER YEAR OCTOBER 2004 TO SEPTEMBER 2005
DAILY MEAN VALUES

DAY	OCT	NOV	DEC	JAN	FEB	MAR	APR	MAY	JUN	JUL	AUG	SEP
1	166	146	866	525	e395	681	518	288	174	154	173	116
2	163	169	991	653	e385	687	499	279	170	145	150	113
3	163	198	1,120	664	e378	646	486	275	189	138	135	110
4	158	247	1,010	951	e371	616	459	271	188	133	137	105
5	151	290	728	1,180	e376	656	433	264	183	139	153	98
6	149	363	621	1,410	e378	802	421	259	188	143	142	94
7	149	327	629	1,340	e436	975	409	260	184	132	130	94
8	147	275	898	978	702	1,010	399	254	174	116	123	94
9	151	244	1,140	729	1,040	888	385	247	169	106	115	94
10	152	243	1,230	645	1,150	705	372	242	158	97	112	96
11	149	241	974	633	977	637	364	237	153	103	119	96
12	146	217	834	840	754	611	354	237	155	106	137	91
13	145	198	768	1,510	710	578	357	240	178	102	181	88
14	147	183	666	2,460	1,010	541	346	237	396	104	284	102
15	145	174	584	3,350	1,540	526	333	235	560	114	341	121
16	137	172	538	3,760	2,190	519	324	230	390	150	294	150
17	136	173	513	e3,050	2,640	534	323	225	e313	184	223	178
18	135	180	495	e2,100	2,580	554	323	216	e266	202	191	149
19	137	206	485	e1,690	2,150	557	321	226	e241	175	178	138
20	139	259	455	e1,220	1,560	589	318	253	e218	158	174	143
21	137	312	418	e855	1,110	624	321	241	202	182	185	128
22	136	292	404	e742	1,060	569	322	224	191	251	202	121
23	140	264	374	e642	1,110	542	348	214	178	292	185	123
24	145	259	e313	e583	1,000	535	347	210	167	234	155	119
25	152	302	e291	e558	868	530	333	202	163	187	143	125
26	154	444	e280	e538	788	552	324	197	170	190	137	183
27	146	526	e278	e495	723	639	322	190	154	290	130	210
28	140	791	e274	e462	684	639	310	191	149	423	124	193
29	136	1,000	e271	e439	---	592	299	189	154	351	119	204
30	138	1,050	e268	e410	---	542	292	185	155	240	118	222
31	138	---	e293	e400	---	526	---	180	---	196	119	---
TOTAL	4,527	9,745	19,009	35,812	29,065	19,602	10,962	7,198	6,330	5,537	5,109	3,898
MEAN	146	325	613	1,155	1,038	632	365	232	211	179	165	130
MAX	166	1,050	1,230	3,760	2,640	1,010	518	288	560	423	341	222
MIN	135	146	268	400	371	519	292	180	149	97	112	88
CFSM	0.34	0.75	1.41	2.66	2.39	1.45	0.84	0.53	0.49	0.41	0.38	0.30
IN.	0.39	0.83	1.63	3.06	2.49	1.68	0.94	0.62	0.54	0.47	0.44	0.33

STATISTICS OF MONTHLY MEAN DATA FOR WATER YEARS 1944 - 2005, BY WATER YEAR (WY)

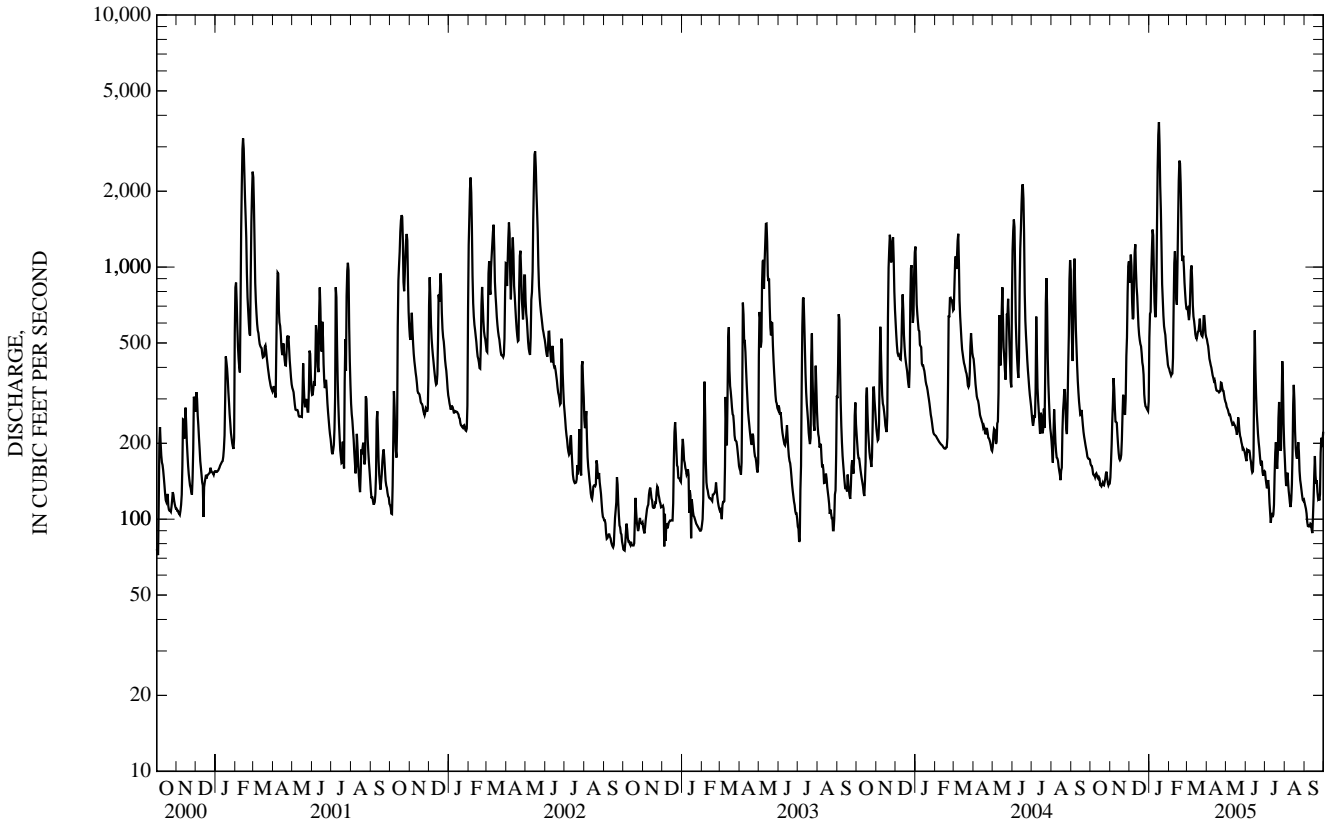
MEAN	254	302	392	452	532	707	701	506	422	287	206	180
MAX	1,939	883	1,070	1,580	1,289	2,127	1,714	1,154	1,113	955	652	692
(WY)	(1955)	(1973)	(1967)	(1993)	(2001)	(1982)	(1950)	(1996)	(1975)	(1996)	(1958)	(1972)
MIN	77.5	83.3	91.6	71.3	107	194	243	169	146	115	93.6	75.9
(WY)	(1965)	(1965)	(1964)	(1963)	(1963)	(1957)	(1958)	(1958)	(1988)	(1971)	(1964)	(1964)

ILLINOIS RIVER BASIN

05517000 YELLOW RIVER AT KNOX, IN—Continued

SUMMARY STATISTICS	FOR 2004 CALENDAR YEAR		FOR 2005 WATER YEAR		WATER YEARS 1944 - 2005	
ANNUAL TOTAL	154,849		156,794			
ANNUAL MEAN	423		430		411	
HIGHEST ANNUAL MEAN					661 1950	
LOWEST ANNUAL MEAN					180 1964	
HIGHEST DAILY MEAN	2,130	Jun 17	3,760	Jan 16	5,600	Oct 15, 1954
LOWEST DAILY MEAN	135	Oct 18	88	Sep 13	47	Jan 2, 1999
ANNUAL SEVEN-DAY MINIMUM	137	Oct 16	93	Sep 7	50	Jan 21, 1963
MAXIMUM PEAK FLOW			3,810	Jan 16	5,660	Oct 15, 1954
MAXIMUM PEAK STAGE			11.44	Jan 16	13.75	Oct 15, 1954
ANNUAL RUNOFF (CFSM)	0.973		0.988		0.945	
ANNUAL RUNOFF (INCHES)	13.24		13.41		12.83	
10 PERCENT EXCEEDS	874		960		882	
50 PERCENT EXCEEDS	294		259		267	
90 PERCENT EXCEEDS	163		129		113	

e Estimated



05517500 KANKAKEE RIVER AT DUNNS BRIDGE, IN

LOCATION.--Lat 41°13'10", long 86°58'07", in NE¼SE¼ sec.15, T.32 N., R.5 W., Porter County, Hydrologic Unit 07120001, (SAN PIERRE, IN quadrangle), on right bank at downstream side of county road 500E bridge at Dunns Bridge, 1.8 mi north of Tefft, 3.6 mi upstream from Davis Ditch, and at mile 90.8.

DRAINAGE AREA.--1,352 mi², of which 192 mi² does not contribute directly to surface runoff.

PERIOD OF RECORD.--July 1948 to current year.

REVISED RECORDS.--WSP 1728: 1954(m). WSP 2115: Drainage area.

GAGE.--Water-stage recorder. Datum of gage is 649.65 ft above National Geodetic Vertical Datum of 1929 (levels by State of Indiana, Department of Natural Resources). Prior to July 17, 1956, nonrecording gage, and July 17, 1956 to Oct. 31 1998, water-stage recorder at site 250 ft downstream at same datum.

REMARKS.--Records good except for estimated daily discharges, which are poor.

DISCHARGE, CUBIC FEET PER SECOND
WATER YEAR OCTOBER 2004 TO SEPTEMBER 2005
DAILY MEAN VALUES

DAY	OCT	NOV	DEC	JAN	FEB	MAR	APR	MAY	JUN	JUL	AUG	SEP
1	661	579	2,290	1,550	2,100	2,700	1,820	1,150	738	566	500	441
2	660	686	2,350	1,730	2,030	2,600	1,810	1,130	723	508	488	422
3	660	801	2,450	1,860	1,960	2,530	1,780	1,090	743	469	437	418
4	656	883	2,490	2,170	1,880	2,470	1,740	1,080	766	456	423	416
5	635	982	2,370	2,480	1,840	2,450	1,690	1,060	788	484	514	408
6	635	1,070	2,130	2,700	1,830	2,480	1,640	1,040	847	490	508	399
7	623	1,070	2,050	2,780	1,910	2,550	1,600	1,030	862	512	475	391
8	611	990	2,200	2,780	2,170	2,610	1,550	1,020	842	506	445	347
9	628	914	2,420	2,580	2,440	2,630	1,520	994	813	456	421	365
10	626	864	2,540	2,310	2,600	2,560	1,480	979	785	423	406	359
11	619	858	2,570	2,180	2,640	2,420	1,440	964	762	401	427	353
12	620	830	2,460	2,340	2,590	2,350	1,400	993	754	404	479	347
13	626	804	2,300	3,090	2,550	2,280	1,380	990	777	397	616	362
14	635	778	2,130	3,680	2,740	2,200	1,340	986	853	394	1,040	376
15	624	763	1,960	3,980	3,010	2,130	1,320	962	1,100	407	1,090	406
16	616	746	1,840	4,300	3,190	2,080	1,290	937	1,070	451	1,010	450
17	605	753	1,720	4,480	3,370	2,040	1,280	924	930	501	857	499
18	629	761	1,650	4,460	3,550	2,010	1,270	903	839	517	770	477
19	620	805	1,600	4,410	3,690	2,000	1,250	912	788	528	725	445
20	606	899	1,540	4,280	3,750	1,980	1,240	978	751	499	700	448
21	594	975	1,480	4,060	3,730	1,980	1,230	978	709	512	722	448
22	566	977	1,440	3,830	3,610	1,960	1,210	925	669	652	725	438
23	581	958	1,390	3,550	3,460	1,910	1,250	897	628	737	695	459
24	635	945	1,290	3,260	3,340	1,860	1,280	865	604	694	638	447
25	651	985	e1,250	3,050	3,220	1,850	1,260	833	600	606	593	443
26	644	1,040	e1,230	2,870	3,090	1,860	1,260	813	587	579	583	513
27	613	1,210	e1,210	2,680	2,940	1,910	1,220	788	571	655	549	566
28	580	1,590	e1,180	2,510	2,800	1,950	1,190	777	561	767	509	567
29	564	1,960	e1,200	2,370	---	1,930	1,180	779	557	793	482	613
30	579	2,170	e1,240	2,280	---	1,880	1,170	779	574	675	464	666
31	579	---	1,380	2,180	---	1,860	---	756	---	559	455	---
TOTAL	19,181	29,646	57,350	92,780	78,030	68,020	42,090	29,312	22,591	16,598	18,746	13,289
MEAN	619	988	1,850	2,993	2,787	2,194	1,403	946	753	535	605	443
MAX	661	2,170	2,570	4,480	3,750	2,700	1,820	1,150	1,100	793	1,090	666
MIN	564	579	1,180	1,550	1,830	1,850	1,170	756	557	394	406	347
CFSM	0.46	0.73	1.37	2.21	2.06	1.62	1.04	0.70	0.56	0.40	0.45	0.33
IN.	0.53	0.82	1.58	2.55	2.15	1.87	1.16	0.81	0.62	0.46	0.52	0.37

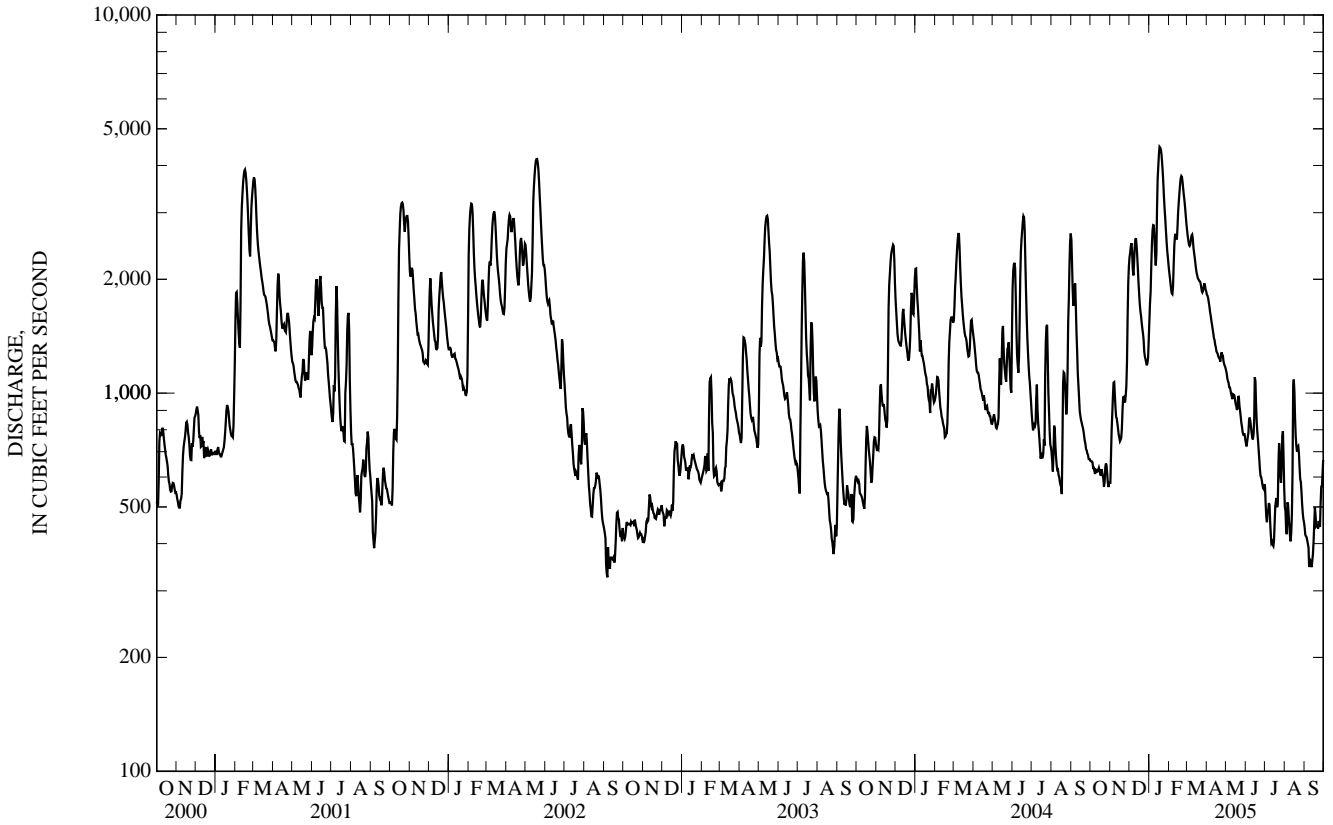
STATISTICS OF MONTHLY MEAN DATA FOR WATER YEARS 1949 - 2005, BY WATER YEAR (WY)

MEAN	924	1,128	1,357	1,479	1,602	2,048	2,146	1,744	1,452	1,089	834	727
MAX	3,378	2,562	2,816	3,845	2,874	4,229	4,376	3,231	3,360	2,622	2,316	1,924
(WY)	(1955)	(1973)	(1983)	(1991)	(1968)	(1985)	(1950)	(1983)	(1996)	(1996)	(1990)	(1993)
MIN	350	398	447	449	391	719	962	767	657	419	371	360
(WY)	(1964)	(1965)	(1964)	(1963)	(1963)	(1957)	(2003)	(1958)	(1988)	(1988)	(1964)	(1964)

05517500 KANKAKEE RIVER AT DUNNS BRIDGE, IN—Continued

SUMMARY STATISTICS	FOR 2004 CALENDAR YEAR		FOR 2005 WATER YEAR		WATER YEARS 1949 - 2005	
ANNUAL TOTAL	442,103		487,633			
ANNUAL MEAN	1,208		1,336		1,376	
HIGHEST ANNUAL MEAN					2,161	1991
LOWEST ANNUAL MEAN					618	1964
HIGHEST DAILY MEAN	2,940	Jun 18	4,480	Jan 17	5,850	Mar 23, 1982
LOWEST DAILY MEAN	541	Aug 17	347	Sep 8	280	Jan 25, 1963
ANNUAL SEVEN-DAY MINIMUM	584	Aug 11	358	Sep 8	283	Jan 24, 1963
MAXIMUM PEAK FLOW			4,520	Jan 17	5,870	Mar 23, 1982
MAXIMUM PEAK STAGE			12.12	Jan 17	13.38	Mar 23, 1982
ANNUAL RUNOFF (CFSM)	0.893		0.988		1.02	
ANNUAL RUNOFF (INCHES)	12.16		13.42		13.83	
10 PERCENT EXCEEDS	2,130		2,620		2,630	
50 PERCENT EXCEEDS	1,050		975		1,140	
90 PERCENT EXCEEDS	644		456		532	

e Estimated



05517530 KANKAKEE RIVER NEAR KOUTS, IN

LOCATION.--Lat 41°15'14", long 87°02'02", in SW $\frac{1}{4}$ NE $\frac{1}{4}$ sec.6, T.32 N., R.5 W., Jasper County, Hydrologic Unit 07120001, (KOUTS, IN quadrangle), on left bank, 20 ft downstream from bridge on State Highway 49, 0.7 mi upstream from Cook Ditch, 4.5 mi south of Kouts, and at mile 86.7.

DRAINAGE AREA.--1,376 mi², of which 194 mi² does not contribute directly to surface runoff.

PERIOD OF RECORD.--October 1974 to current year.

REVISED RECORDS.--WDR IN-77-1: 1975(M).

GAGE.--Water-stage recorder. Datum of gage is 645.00 ft above National Geodetic Vertical Datum of 1929.

REMARKS.--Records poor.

DISCHARGE, CUBIC FEET PER SECOND
WATER YEAR OCTOBER 2004 TO SEPTEMBER 2005
DAILY MEAN VALUES

DAY	OCT	NOV	DEC	JAN	FEB	MAR	APR	MAY	JUN	JUL	AUG	SEP
1	598	539	2,230	e1,420	2,170	2,780	1,840	1,140	710	556	494	454
2	598	629	2,340	e1,580	2,110	2,660	1,840	1,120	697	527	493	440
3	600	750	2,390	1,860	2,040	2,590	1,820	1,070	714	477	431	430
4	595	841	2,410	2,270	1,940	2,490	1,750	1,050	735	460	412	391
5	576	931	2,290	2,560	1,880	2,510	1,730	1,040	772	487	515	386
6	580	987	2,070	2,750	1,870	2,500	1,660	1,010	865	479	530	375
7	579	985	2,020	2,820	1,980	2,580	1,620	1,020	881	481	499	387
8	561	923	2,200	2,800	2,270	2,620	1,570	1,020	866	474	466	359
9	569	847	2,400	2,610	2,520	2,650	1,520	998	850	e456	423	389
10	592	797	2,500	2,360	2,650	2,600	1,470	996	810	e422	396	356
11	592	789	2,510	2,240	2,690	2,450	1,430	975	786	e407	432	335
12	596	762	2,430	2,530	2,640	2,360	1,400	998	781	e411	489	340
13	593	728	2,260	3,520	2,650	2,310	1,380	997	794	e404	625	354
14	622	707	2,070	4,060	2,910	2,220	1,330	975	858	e405	1,080	398
15	602	705	1,910	4,120	3,220	2,150	1,310	950	1,070	e431	1,150	420
16	584	675	1,780	4,230	3,370	2,110	1,270	920	1,100	e460	1,080	447
17	550	692	1,660	4,340	3,500	2,060	1,260	909	952	e500	936	510
18	577	715	1,580	4,340	3,610	2,030	1,260	890	847	e522	823	518
19	567	757	1,520	4,300	3,740	2,010	1,230	913	788	e529	779	483
20	546	823	1,450	4,250	3,790	1,980	1,220	983	745	e499	758	477
21	527	880	1,410	4,140	3,790	1,980	1,210	968	690	e513	737	456
22	506	896	1,380	3,960	3,700	1,970	1,200	915	655	e654	749	464
23	529	881	1,320	3,720	3,570	1,930	1,230	901	635	e736	745	464
24	571	866	1,220	3,440	3,460	1,870	1,270	877	582	e695	667	468
25	593	904	1,170	3,210	3,340	1,850	1,260	865	572	e604	620	424
26	570	947	e1,160	3,050	3,190	1,880	1,260	818	582	526	605	479
27	562	1,090	e1,140	2,820	3,080	1,940	1,230	810	544	611	548	582
28	521	1,470	e1,130	2,630	2,880	1,960	1,200	772	517	743	507	587
29	521	1,870	e1,130	2,460	---	1,930	1,190	765	518	772	475	600
30	541	2,070	e1,150	2,360	---	1,910	1,170	749	551	679	450	670
31	539	---	e1,260	2,250	---	1,900	---	727	---	571	453	---
TOTAL	17,657	27,456	55,490	95,000	80,560	68,780	42,130	29,141	22,467	16,491	19,367	13,443
MEAN	570	915	1,790	3,065	2,877	2,219	1,404	940	749	532	625	448
MAX	622	2,070	2,510	4,340	3,790	2,780	1,840	1,140	1,100	772	1,150	670
MIN	506	539	1,130	1,420	1,870	1,850	1,170	727	517	404	396	335
CFSM	0.41	0.67	1.30	2.23	2.09	1.61	1.02	0.68	0.54	0.39	0.45	0.33
IN.	0.48	0.74	1.50	2.57	2.18	1.86	1.14	0.79	0.61	0.45	0.52	0.36

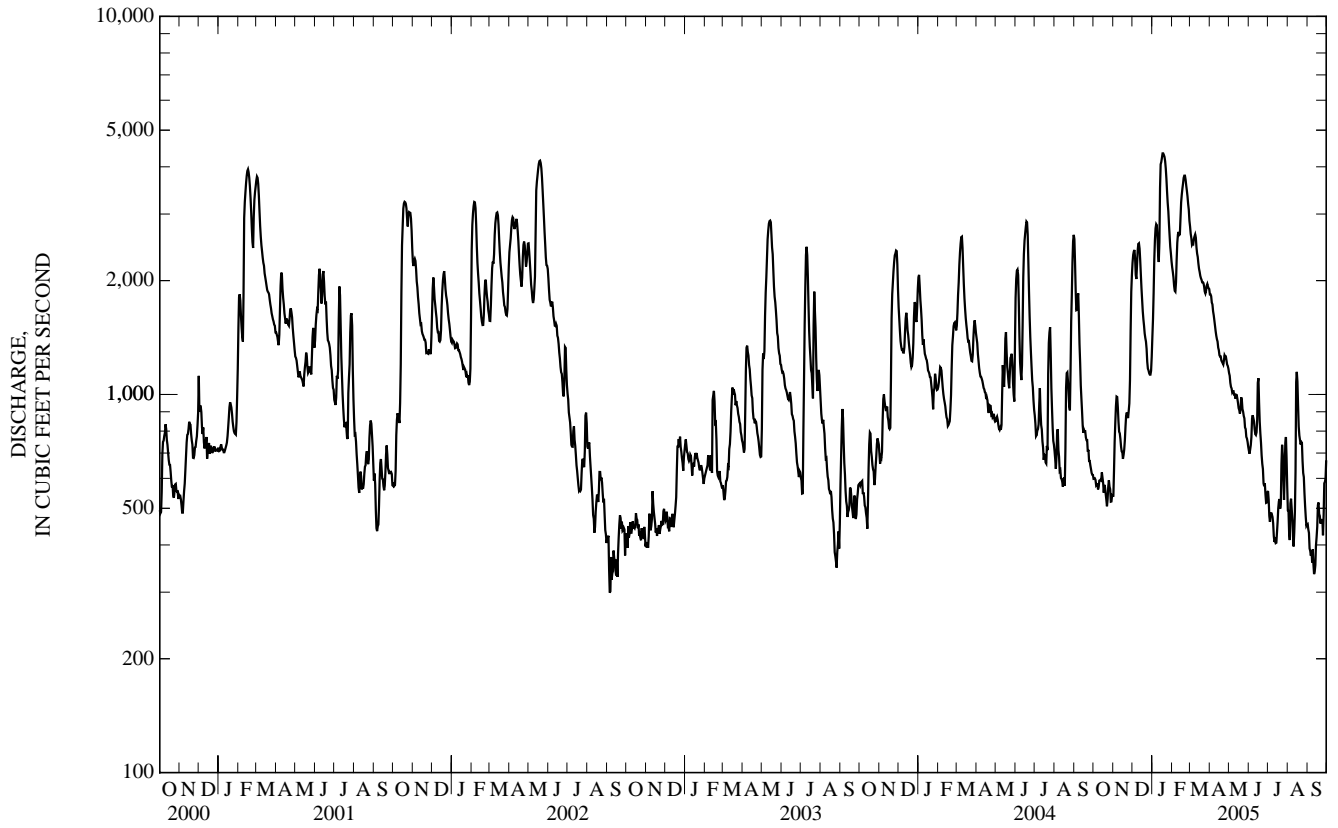
STATISTICS OF MONTHLY MEAN DATA FOR WATER YEARS 1975 - 2005, BY WATER YEAR (WY)

	1975	1976	1977	1978	1979	1980	1981	1982	1983	1984	1985	1986	1987	1988	1989	1990	1991	1992	1993	1994	1995	1996	1997	1998	1999	2000	2001	2002	2003	2004	2005		
MEAN	964	1,220	1,518	1,539	1,667	2,245	2,277	1,833	1,658	1,176	914	794																					
MAX	2,770	2,392	2,889	3,787	2,877	4,613	4,229	3,255	3,403	2,642	2,432	2,014																					
(WY)	(1991)	(1991)	(1991)	(1991)	(2005)	(1985)	(1985)	(1983)	(1996)	(1996)	(1990)	(1993)																					
MIN	435	437	568	634	697	792	926	940	619	411	398	350																					
(WY)	(2003)	(2000)	(2003)	(1977)	(2003)	(2003)	(2003)	(2005)	(1988)	(1988)	(1988)	(1999)																					

SUMMARY STATISTICS

	FOR 2004 CALENDAR YEAR		FOR 2005 WATER YEAR		WATER YEARS 1975 - 2005	
ANNUAL TOTAL	435,081		487,982			
ANNUAL MEAN	1,189		1,337		1,482	
HIGHEST ANNUAL MEAN					2,160	
LOWEST ANNUAL MEAN					818	
HIGHEST DAILY MEAN	2,870	Jun 18	4,340	Jan 17	6,410	Mar 24, 1982
LOWEST DAILY MEAN	506	Oct 22	335	Sep 11	281	Sep 12, 1999
ANNUAL SEVEN-DAY MINIMUM	542	Oct 26	360	Sep 7	306	Sep 11, 1999
MAXIMUM PEAK FLOW			4,400		6,420	
MAXIMUM PEAK STAGE			13.32		14.52	
ANNUAL RUNOFF (CFSM)	0.864		0.972		1.08	
ANNUAL RUNOFF (INCHES)	11.76		13.19		14.64	
10 PERCENT EXCEEDS	2,070		2,650		2,800	
50 PERCENT EXCEEDS	1,050		931		1,240	
90 PERCENT EXCEEDS	602		465		580	

e Estimated



05518000 KANKAKEE RIVER AT SHELBY, IN

LOCATION.--Lat 41°10'58", long 87°20'25", in SW¹/₄NE¹/₄ sec.33, T.32 N., R.8 W., Lake County, Hydrologic Unit 07120001, (SHELBY, IN quadrangle), on right bank at upstream side of Highway 55 bridge, 1.0 mi south of Shelby, 7.8 mi upstream from Beaver Lake Ditch, and at mile 68.0.

DRAINAGE AREA.--1,779 mi², of which 201 mi² does not contribute directly to surface runoff.

PERIOD OF RECORD.--October 1922 to current year. Monthly discharge only for some periods, published in WSP 1308.

REVISED RECORDS.--WSP 1005: 1928(M). WSP 2115: Drainage area.

GAGE.--Water-stage recorder. Datum of gage is 628.13 ft above National Geodetic Vertical Datum of 1929. Prior to Dec. 19, 1934, nonrecording gage, Dec. 19, 1934, to Oct. 4, 1965, water-stage recorder on left bank 50 ft downstream, Oct. 5, 1965, to Sept. 21, 1966, nonrecording gage on right bank 200 ft downstream, and Sept. 21, 1966 to July 21, 1998, water-stage recorder on right bank 25 ft upstream from Monon railroad bridge and approximately 400 ft downstream, all at same datum.

REMARKS.--Records fair except for estimated daily discharges, which are poor.

DISCHARGE, CUBIC FEET PER SECOND
WATER YEAR OCTOBER 2004 TO SEPTEMBER 2005
DAILY MEAN VALUES

DAY	OCT	NOV	DEC	JAN	FEB	MAR	APR	MAY	JUN	JUL	AUG	SEP
1	865	832	3,000	e2,050	3,200	4,000	2,500	1,530	857	e602	e700	e560
2	874	1,040	3,230	e2,200	3,070	3,860	2,450	1,510	836	e571	e683	e544
3	853	1,200	3,250	e2,400	2,960	3,720	2,430	1,480	841	e543	e649	e536
4	855	1,330	3,250	3,160	2,870	3,600	2,370	1,410	858	e535	e637	e532
5	834	1,510	3,220	3,480	2,800	3,540	2,300	1,380	1,070	e552	e672	e520
6	831	1,550	3,120	3,670	2,770	3,490	2,260	1,350	1,330	e550	e737	e506
7	834	1,560	3,080	3,740	2,840	3,470	2,200	1,330	1,250	e578	e674	493
8	836	1,490	3,350	3,750	3,140	3,510	2,130	1,330	1,230	e570	e646	485
9	827	1,380	3,430	3,680	3,370	3,500	2,070	1,320	1,200	e548	e626	479
10	826	1,310	3,490	3,540	3,480	3,470	2,000	1,280	1,130	e532	e623	491
11	841	1,260	3,490	3,410	3,520	3,390	1,950	1,260	1,050	e518	e672	456
12	841	1,220	3,460	3,630	3,530	3,290	1,910	1,270	1,040	e521	e825	456
13	848	1,170	3,370	4,620	3,530	3,230	1,890	1,300	1,020	e512	e1,130	465
14	862	1,120	3,200	5,480	3,850	3,110	1,820	1,290	1,050	e516	e1,470	484
15	882	1,110	3,010	5,450	4,280	3,020	1,760	1,250	1,160	e542	e1,780	522
16	858	1,070	2,840	5,310	4,410	2,950	1,730	1,200	1,310	e595	e1,690	548
17	824	1,070	2,690	5,260	4,460	2,890	1,680	1,170	1,220	e632	e1,490	594
18	824	1,080	2,550	5,270	4,470	2,830	1,680	1,160	1,040	e680	e1,280	649
19	834	1,150	2,430	5,260	4,480	2,770	1,640	1,180	957	e690	1,160	626
20	802	1,210	2,310	5,210	4,540	2,730	1,620	1,250	914	e646	1,100	609
21	784	1,280	2,230	5,150	4,620	2,650	1,640	1,270	816	e640	1,070	584
22	763	1,310	2,150	5,080	4,650	2,620	1,620	1,220	e750	e754	1,030	596
23	782	1,290	2,060	4,950	4,630	2,590	1,650	1,170	e700	e825	981	614
24	872	1,280	2,010	4,770	4,540	2,540	1,680	1,140	e649	e944	935	614
25	882	1,340	e1,920	4,570	4,440	2,520	1,680	1,140	e642	e800	851	595
26	884	1,390	e1,870	4,370	4,350	2,560	1,680	1,060	e626	e748	811	587
27	857	1,610	e1,850	4,150	4,220	2,590	1,670	1,040	e607	e836	773	660
28	815	2,220	e1,820	3,920	4,120	2,610	1,620	1,010	e593	e960	714	717
29	816	2,550	e1,810	3,700	---	2,600	1,590	949	e593	e984	686	740
30	819	2,750	e1,830	3,520	---	2,550	1,560	941	e609	e870	e590	784
31	824	---	e1,940	3,350	---	2,540	---	893	---	e757	e575	---
TOTAL	25,949	41,682	83,260	128,100	107,140	94,740	56,780	38,083	27,948	20,551	28,260	17,046
MEAN	837	1,389	2,686	4,132	3,826	3,056	1,893	1,228	932	663	912	568
MAX	884	2,750	3,490	5,480	4,650	4,000	2,500	1,530	1,330	984	1,780	784
MIN	763	832	1,810	2,050	2,770	2,520	1,560	893	593	512	575	456
CFSM	0.47	0.78	1.51	2.32	2.15	1.72	1.06	0.69	0.52	0.37	0.51	0.32
IN.	0.54	0.87	1.74	2.68	2.24	1.98	1.19	0.80	0.58	0.43	0.59	0.36

STATISTICS OF MONTHLY MEAN DATA FOR WATER YEARS 1924 - 2005, BY WATER YEAR (WY)

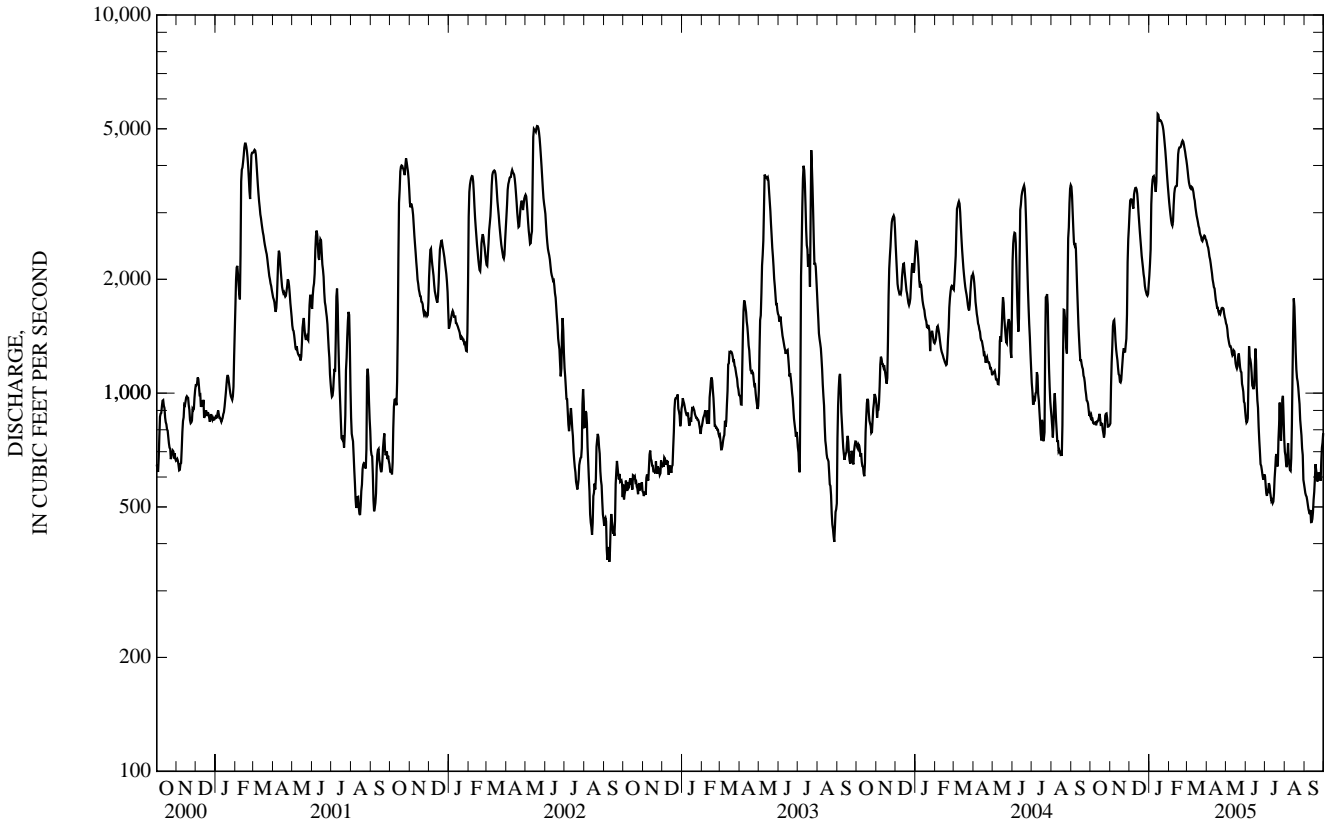
MEAN	1,070	1,337	1,629	1,831	1,992	2,539	2,723	2,290	1,821	1,286	974	872
MAX	3,529	3,413	4,502	4,867	3,826	5,570	5,365	4,409	4,347	3,228	3,058	2,843
(WY)	(1991)	(1973)	(1928)	(1991)	(2005)	(1985)	(1982)	(1943)	(1981)	(1996)	(1990)	(1993)
MIN	455	500	540	460	462	848	1,226	789	569	441	402	356
(WY)	(1954)	(2000)	(1964)	(1940)	(1963)	(1934)	(1925)	(1934)	(1934)	(1988)	(1988)	(1941)

ILLINOIS RIVER BASIN

05518000 KANKAKEE RIVER AT SHELBY, IN—Continued

SUMMARY STATISTICS	FOR 2004 CALENDAR YEAR		FOR 2005 WATER YEAR		WATER YEARS 1924 - 2005	
ANNUAL TOTAL	598,297		669,539		1,695	
ANNUAL MEAN	1,635		1,834		2,767	
HIGHEST ANNUAL MEAN					775	
LOWEST ANNUAL MEAN					1964	
HIGHEST DAILY MEAN	3,550	Aug 31	5,480	Jan 14	7,650	Mar 26, 1982
LOWEST DAILY MEAN	683	Aug 17	456	Sep 11	260	Jan 13, 1954
ANNUAL SEVEN-DAY MINIMUM	703	Aug 11	474	Sep 8	298	Aug 2, 1988
MAXIMUM PEAK FLOW			5,570		7,650	
MAXIMUM PEAK STAGE			12.32		12.98	
ANNUAL RUNOFF (CFSM)	0.919		1.03		0.953	
ANNUAL RUNOFF (INCHES)	12.51		14.00		12.94	
10 PERCENT EXCEEDS	2,930		3,710		3,350	
50 PERCENT EXCEEDS	1,430		1,290		1,350	
90 PERCENT EXCEEDS	835		594		630	

e Estimated



05522500 IROQUOIS RIVER AT RENSSELAER, IN

LOCATION.--Lat 40°56'00", long 87°07'44", in NW $\frac{1}{4}$ SE $\frac{1}{4}$ sec.29, T.29 N., R.6 W., Jasper County, Hydrologic Unit 07120002, (RENSSELAER, IN quadrangle), on right bank 20 ft downstream from bridge on State Highway 114, 0.8 mi east of Rensselaer, 1.5 mi downstream from Ryan Ditch, 5.5 mi upstream from Slough Creek, and at mile 84.9.

DRAINAGE AREA.--203 mi².

PERIOD OF RECORD.--July 1948 to current year.

REVISED RECORDS.--WSP 2115: Drainage area.

GAGE.--Water-stage recorder. Datum of gage is 642.29 ft above National Geodetic Vertical Datum of 1929 (levels by State of Indiana, Department of Natural Resources). Prior to July 8, 1949, nonrecording gage at same site and datum.

REMARKS.--Records good except for estimated daily discharges, which are poor. Streamflow affected by irrigation.

DISCHARGE, CUBIC FEET PER SECOND
WATER YEAR OCTOBER 2004 TO SEPTEMBER 2005
DAILY MEAN VALUES

DAY	OCT	NOV	DEC	JAN	FEB	MAR	APR	MAY	JUN	JUL	AUG	SEP
1	66	105	918	265	e175	311	214	110	47	48	19	19
2	64	362	946	263	e170	290	205	103	47	38	17	18
3	e61	387	813	484	e164	264	185	104	54	29	16	18
4	58	399	647	979	e160	251	165	92	54	33	18	17
5	e55	439	509	1,160	200	249	159	87	62	30	25	17
6	e56	382	435	1,150	300	253	148	94	202	44	24	16
7	55	294	612	982	410	255	139	89	224	26	21	20
8	55	232	915	776	645	241	136	83	160	22	20	21
9	60	200	906	592	699	215	125	79	121	23	19	19
10	e58	185	771	472	600	202	117	80	93	23	21	17
11	e58	170	620	559	485	202	111	75	81	23	42	17
12	e56	151	500	1,120	418	200	116	73	86	23	41	16
13	59	134	409	1,650	429	188	131	72	130	25	57	16
14	61	123	334	e1,950	878	174	120	71	169	24	83	21
15	61	118	283	e2,000	1,110	168	108	69	129	29	93	25
16	60	120	261	e1,890	1,090	163	102	65	96	40	90	26
17	e59	121	243	e1,650	972	163	100	62	80	35	77	24
18	63	118	234	e1,350	777	161	100	62	72	27	56	22
19	82	183	221	1,040	593	156	97	67	64	26	48	21
20	74	266	183	775	471	153	96	75	60	24	41	22
21	68	236	e167	e600	484	145	116	74	56	29	38	22
22	65	206	e158	425	522	139	139	70	51	28	34	19
23	89	189	e150	337	496	143	220	67	47	27	30	22
24	164	200	e143	e295	451	141	221	61	42	26	28	21
25	141	337	e137	e260	405	154	193	56	38	23	25	25
26	116	388	e133	e240	365	245	171	55	35	23	23	73
27	105	575	e130	e220	329	256	152	54	32	31	21	79
28	100	896	e140	e200	313	237	132	53	31	29	21	54
29	96	907	151	e198	---	218	123	50	34	26	20	98
30	104	800	151	e190	---	203	119	50	35	22	19	97
31	99	---	205	e180	---	215	---	48	---	20	19	---
TOTAL	2,368	9,223	12,425	24,252	14,111	6,355	4,260	2,250	2,432	876	1,106	902
MEAN	76.4	307	401	782	504	205	142	72.6	81.1	28.3	35.7	30.1
MAX	164	907	946	2,000	1,110	311	221	110	224	48	93	98
MIN	55	105	130	180	160	139	96	48	31	20	16	16
CFSM	0.38	1.51	1.97	3.85	2.48	1.01	0.70	0.36	0.40	0.14	0.18	0.15
IN.	0.43	1.69	2.28	4.44	2.59	1.16	0.78	0.41	0.45	0.16	0.20	0.17

STATISTICS OF MONTHLY MEAN DATA FOR WATER YEARS 1949 - 2005, BY WATER YEAR (WY)

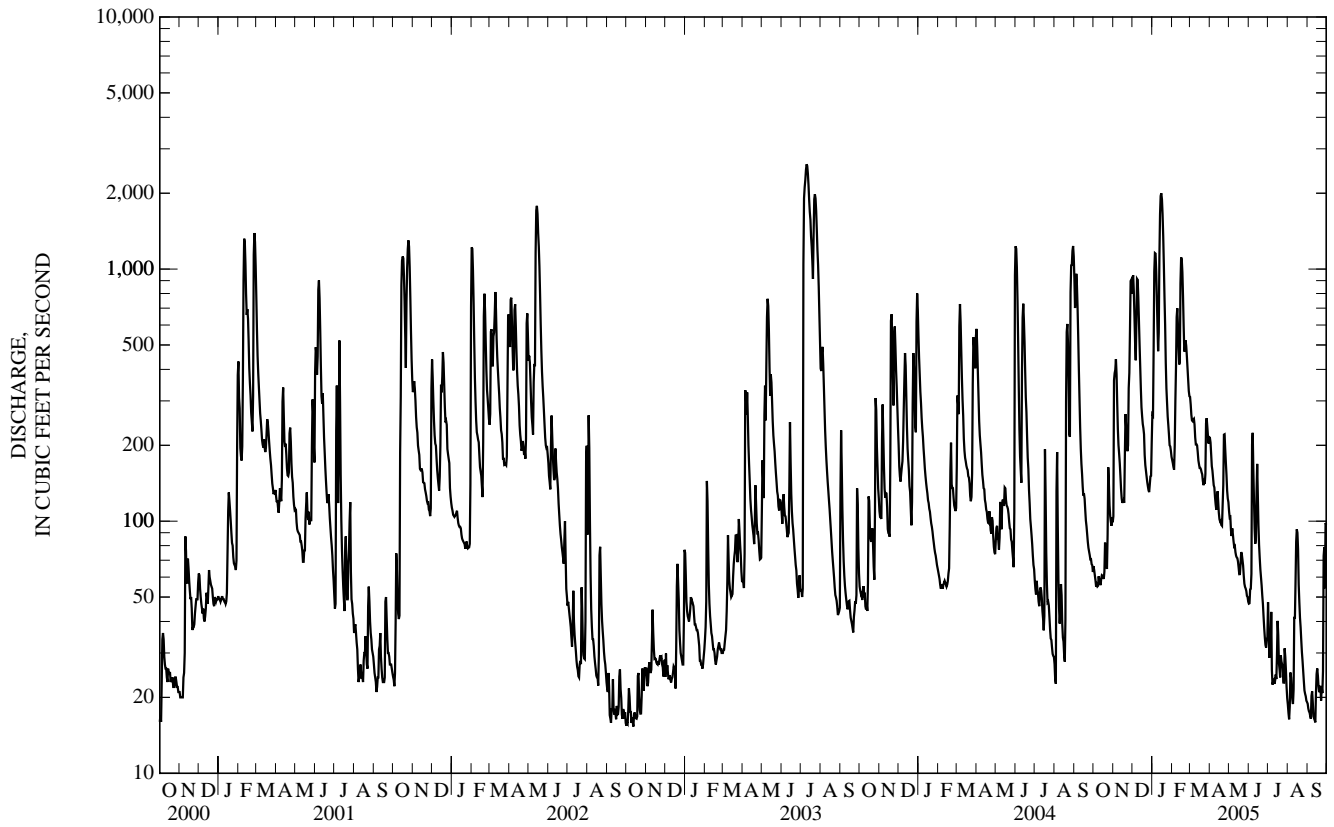
MEAN	92.2	125	181	210	254	326	331	245	211	126	59.7	67.5
MAX	921	561	559	782	660	935	886	766	863	1,418	328	641
(WY)	(1994)	(1993)	(1991)	(2005)	(1997)	(1982)	(1950)	(1974)	(1958)	(2003)	(2004)	(1993)
MIN	5.77	7.75	7.04	14.5	13.9	40.8	87.8	47.6	22.9	12.5	4.61	5.26
(WY)	(1965)	(1965)	(1964)	(1963)	(1964)	(1957)	(1986)	(1958)	(1988)	(1964)	(1964)	(1964)

ILLINOIS RIVER BASIN

05522500 IROQUOIS RIVER AT RENNELAER, IN—Continued

SUMMARY STATISTICS	FOR 2004 CALENDAR YEAR		FOR 2005 WATER YEAR		WATER YEARS 1949 - 2005	
ANNUAL TOTAL	81,402		80,560			
ANNUAL MEAN	222		221		185	
HIGHEST ANNUAL MEAN					415	1993
LOWEST ANNUAL MEAN					29.7	1964
HIGHEST DAILY MEAN	1,230	Jun 1	2,000	Jan 15	2,610	Jul 10, 2003
LOWEST DAILY MEAN	23	Aug 2	16	Aug 3	2.2	Sep 9, 1964
ANNUAL SEVEN-DAY MINIMUM	28	Jul 28	18	Aug 31	2.8	Sep 9, 1964
MAXIMUM PEAK FLOW			2,020	Jan 15	2,620	Jul 10, 2003
MAXIMUM PEAK STAGE			14.65	Jan 15	16.59	Jul 10, 2003
ANNUAL RUNOFF (CFSM)	1.10		1.09		0.912	
ANNUAL RUNOFF (INCHES)	14.92		14.76		12.39	
10 PERCENT EXCEEDS	584		592		463	
50 PERCENT EXCEEDS	122		116		92	
90 PERCENT EXCEEDS	54		22		17	

e Estimated



05524500 IROQUOIS RIVER NEAR FORESMAN, IN

LOCATION.--Lat 40°52'14", long 87°18'24", in NE $\frac{1}{4}$ SE $\frac{1}{4}$ sec.15, T.28 N., R.8 W., Newton County, Hydrologic Unit 07120002, (GOODLAND, IN quadrangle), on right bank at downstream side of bridge on State Highway 55, 0.2 mi north of intersection of State Highways 16 and 55, 0.5 mi downstream from Mosquito Creek, 0.6 mi west of Foresman, 3 mi east of Brook, and at mile 72.7.

DRAINAGE AREA.--449 mi².

PERIOD OF RECORD.--December 1948 to current year.

REVISED RECORDS.--WSP 1338: 1953. WSP 1438: 1955. WSP 1508: 1956. WSP 2115: Drainage area.

GAGE.--Water-stage recorder and Acoustic Doppler Velocity meter. Datum of gage is 624.00 ft above National Geodetic Vertical Datum of 1929. Prior to Sept. 7, 1955 nonrecording gage 2.5 mi upstream at datum 3.54 ft higher.

REMARKS.--Records fair except for estimated daily discharges, which are poor.

DISCHARGE, CUBIC FEET PER SECOND
WATER YEAR OCTOBER 2004 TO SEPTEMBER 2005
DAILY MEAN VALUES

DAY	OCT	NOV	DEC	JAN	FEB	MAR	APR	MAY	JUN	JUL	AUG	SEP
1	128	250	1,980	e500	e298	646	396	259	108	72	40	e24
2	130	598	2,200	e500	e298	584	367	238	106	73	e40	e23
3	124	831	2,110	e800	e297	522	345	226	120	59	e36	e23
4	119	890	1,830	e1,300	e297	487	314	212	121	52	e31	e22
5	115	1,000	1,520	1,890	337	484	304	200	133	65	38	e22
6	113	979	1,270	2,330	516	486	288	204	471	65	41	e21
7	113	877	1,290	2,320	701	494	272	201	476	61	e39	e24
8	108	721	1,830	2,030	1,060	466	261	194	351	44	e36	e26
9	116	529	2,030	1,660	1,220	406	249	190	272	40	e35	e24
10	116	429	1,920	1,350	1,220	380	238	191	212	40	e35	e22
11	110	371	1,690	1,280	1,120	379	229	178	178	41	50	e21
12	107	325	1,420	2,090	1,000	370	229	166	166	41	65	e21
13	108	284	1,200	3,950	950	345	270	161	183	41	74	e21
14	116	259	982	5,140	1,420	324	261	162	287	57	114	e24
15	115	247	770	5,290	2,150	313	240	159	252	64	e139	30
16	112	244	622	4,820	2,380	302	229	147	197	96	e115	35
17	106	247	527	e4,020	2,310	302	220	139	162	94	e100	37
18	106	242	470	e3,600	2,020	306	223	134	143	69	e90	31
19	149	309	427	e2,900	1,650	298	216	141	130	56	72	26
20	169	491	362	e2,200	1,330	286	210	161	120	49	61	27
21	154	478	e350	e1,700	1,210	268	237	159	114	49	54	26
22	143	413	e320	e1,300	1,180	257	295	152	106	54	48	26
23	154	377	e290	e1,000	1,120	266	550	150	97	62	41	31
24	305	371	e279	e500	1,050	268	617	138	89	56	e37	37
25	328	693	e278	e440	947	279	512	131	80	46	e34	44
26	272	840	e278	e380	878	431	436	125	71	40	e31	126
27	228	1,030	e277	e350	754	486	381	125	67	67	e28	266
28	217	1,520	e277	e340	680	469	314	120	61	116	e27	189
29	220	1,870	298	e310	---	437	279	115	65	84	e26	181
30	253	1,880	305	e300	---	402	274	112	64	60	e25	240
31	279	---	335	e299	---	417	---	111	---	47	e25	---
TOTAL	4,933	19,595	29,737	56,889	30,393	12,160	9,256	5,101	5,002	1,860	1,627	1,670
MEAN	159	653	959	1,835	1,085	392	309	165	167	60.0	52.5	55.7
MAX	328	1,880	2,200	5,290	2,380	646	617	259	476	116	139	266
MIN	106	242	277	299	297	257	210	111	61	40	25	21
CFSM	0.35	1.45	2.14	4.09	2.42	0.87	0.69	0.37	0.37	0.13	0.12	0.12
IN.	0.41	1.62	2.46	4.71	2.52	1.01	0.77	0.42	0.41	0.15	0.13	0.14

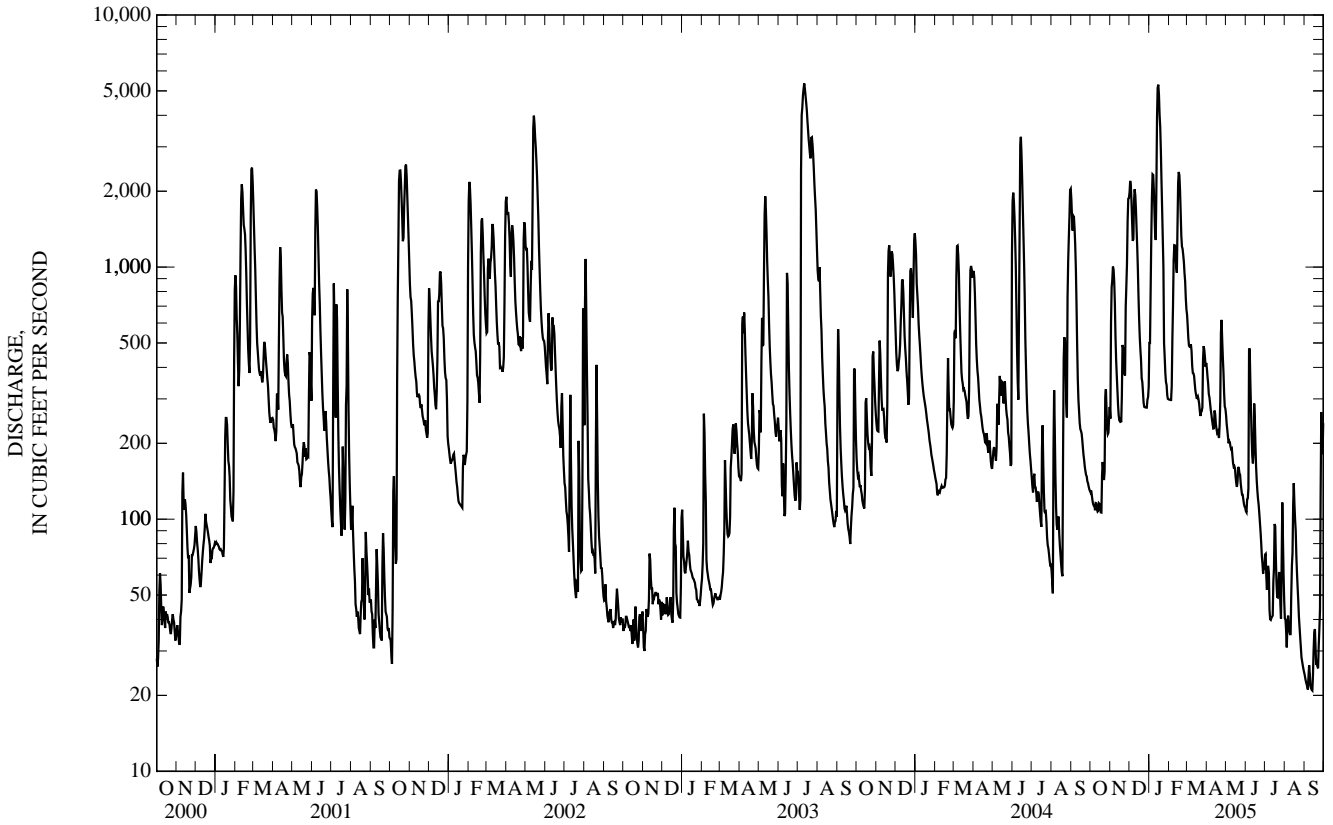
STATISTICS OF MONTHLY MEAN DATA FOR WATER YEARS 1950 - 2005, BY WATER YEAR (WY)

MEAN	188	262	401	449	564	721	737	558	489	301	113	142
MAX	1,792	1,218	1,274	1,835	1,490	2,266	1,672	1,440	2,314	2,814	435	1,387
(WY)	(1994)	(1993)	(1968)	(2005)	(1968)	(1982)	(1950)	(2002)	(1958)	(2003)	(1990)	(1993)
MIN	9.70	16.1	15.3	27.0	31.4	81.7	199	108	39.8	17.7	12.2	11.1
(WY)	(1957)	(1965)	(1964)	(1963)	(1964)	(1957)	(1986)	(1958)	(1988)	(1988)	(1988)	(1964)

05524500 IROQUOIS RIVER NEAR FORESMAN, IN—Continued

SUMMARY STATISTICS	FOR 2004 CALENDAR YEAR		FOR 2005 WATER YEAR		WATER YEARS 1950 - 2005	
ANNUAL TOTAL	174,877		178,223			
ANNUAL MEAN	478		488		409	
HIGHEST ANNUAL MEAN					891 1993	
LOWEST ANNUAL MEAN					77.6 1964	
HIGHEST DAILY MEAN	3,290	Jun 14	5,290	Jan 15	5,930	Jun 14, 1958
LOWEST DAILY MEAN	51	Aug 3	21	Sep 6	6.3	Sep 10, 1964
ANNUAL SEVEN-DAY MINIMUM	63	Jul 28	23	Sep 1	8.0	Sep 5, 1964
MAXIMUM PEAK FLOW			5,610	Jan 15	5,930	Jun 14, 1958
MAXIMUM PEAK STAGE			21.85	Jan 14	24.87	Jul 11, 2003
ANNUAL RUNOFF (CF5M)	1.06		1.09		0.912	
ANNUAL RUNOFF (INCHES)	14.49		14.77		12.39	
10 PERCENT EXCEEDS	1,280		1,310		1,080	
50 PERCENT EXCEEDS	268		244		196	
90 PERCENT EXCEEDS	113		37		30	

e Estimated



05536179 HART DITCH AT DYER, IN

LOCATION.--Lat 41°30'28", long 87°30'36", in NE $\frac{1}{4}$ NE $\frac{1}{4}$ sec. 12, T.35 N., R.10 W., Lake County, Hydrologic Unit 07120003, (CALUMET CITY, IL-IN quadrangle), on right bank, 50 ft upstream from 213th Street in Dyer, 0.8 mi upstream from Dyer Ditch, 0.8 mi east of Illinois state line, 3.5 mi east of intersection of U.S. Highway 30 and Interstate 394.

DRAINAGE AREA.--37.6 mi².

PERIOD OF RECORD.--October 1989 to current year.

GAGE.--Water-stage recorder. Datum of gage is 607.38 ft above National Geodetic Vertical Datum of 1929.

REMARKS.--Records fair. Low-flow affected by sewage effluent.

DISCHARGE, CUBIC FEET PER SECOND
WATER YEAR OCTOBER 2004 TO SEPTEMBER 2005
DAILY MEAN VALUES

DAY	OCT	NOV	DEC	JAN	FEB	MAR	APR	MAY	JUN	JUL	AUG	SEP
1	2.8	13	197	18	16	38	23	12	8.5	5.9	4.0	4.6
2	3.4	115	140	47	16	32	22	11	8.6	e5.3	3.9	4.2
3	3.1	51	88	149	15	28	21	11	8.8	e4.7	3.7	3.9
4	3.2	48	66	276	16	28	18	11	52	e5.0	3.9	3.6
5	3.2	66	54	145	21	27	16	11	612	e5.4	3.8	3.5
6	3.2	32	52	105	47	28	15	11	151	e5.1	3.6	3.3
7	3.1	21	321	73	89	30	15	11	79	e4.6	3.5	3.1
8	3.6	16	497	58	153	29	14	10	108	e4.5	3.8	3.0
9	3.7	13	181	48	95	25	13	10	58	e4.3	3.6	2.9
10	3.8	11	120	44	61	23	12	10	37	e4.1	3.7	3.0
11	3.9	9.7	90	74	49	23	12	12	29	e4.3	9.8	2.9
12	4.0	8.6	68	307	44	24	15	12	23	e5.5	18	2.8
13	4.4	7.6	55	946	50	21	29	15	21	e5.8	16	2.9
14	5.9	7.0	43	613	424	20	25	13	22	e4.9	59	3.0
15	10	6.7	33	203	335	19	18	11	18	e4.4	22	3.9
16	8.6	6.2	33	125	214	18	16	11	14	e4.5	14	5.1
17	5.5	6.0	28	75	128	18	15	10	11	e4.5	12	5.1
18	4.4	6.1	26	65	73	18	14	9.7	9.5	e10	11	3.5
19	3.8	7.7	21	51	57	19	13	26	8.3	e6.6	9.1	3.4
20	3.6	16	22	41	50	20	13	55	7.7	e4.8	87	3.1
21	3.6	13	19	32	65	18	15	30	7.0	e5.1	51	2.9
22	3.6	11	18	27	58	18	17	22	6.8	e5.0	21	2.9
23	8.9	9.2	16	25	49	19	20	18	6.2	e4.5	14	2.8
24	16	12	14	24	42	20	19	15	6.5	e4.3	11	2.8
25	9.8	41	13	23	39	28	16	13	6.1	e7.1	9.7	3.3
26	7.1	59	13	23	36	76	15	12	6.0	12	8.2	3.2
27	6.1	156	12	21	33	54	15	11	6.0	18	7.5	3.0
28	5.2	249	12	19	33	40	13	10	6.2	9.1	6.6	4.2
29	5.2	120	13	18	---	32	13	11	5.9	5.8	5.7	3.4
30	5.1	89	13	18	---	28	12	9.8	6.3	4.6	5.3	3.8
31	4.3	---	18	17	---	27	---	8.7	---	4.1	5.0	---
TOTAL	162.1	1,226.8	2,296	3,710	2,308	848	494	443.2	1,349.4	183.8	440.4	103.1
MEAN	5.23	40.9	74.1	120	82.4	27.4	16.5	14.3	45.0	5.93	14.2	3.44
MAX	16	249	497	946	424	76	29	55	612	18	87	5.1
MIN	2.8	6.0	12	17	15	18	12	8.7	5.9	4.1	3.5	2.8
CFSM	0.14	1.09	1.97	3.18	2.19	0.73	0.44	0.38	1.20	0.16	0.38	0.09
IN.	0.16	1.21	2.27	3.67	2.28	0.84	0.49	0.44	1.34	0.18	0.44	0.10

STATISTICS OF MONTHLY MEAN DATA FOR WATER YEARS 1990 - 2005, BY WATER YEAR (WY)

MEAN	19.9	42.0	36.0	48.1	56.2	61.0	51.2	53.9	50.8	22.8	19.6	12.8
MAX	113	195	106	136	183	169	138	140	182	93.2	74.1	106
(WY)	(1994)	(1991)	(1991)	(1993)	(1997)	(1991)	(1999)	(1996)	(1993)	(2003)	(1998)	(1993)
MIN	2.77	3.55	4.86	3.71	3.94	7.00	16.5	7.48	4.21	4.46	3.87	2.41
(WY)	(1996)	(2000)	(2003)	(2003)	(2003)	(2000)	(2005)	(1992)	(1992)	(1991)	(2002)	(1994)

SUMMARY STATISTICS

FOR 2004 CALENDAR YEAR

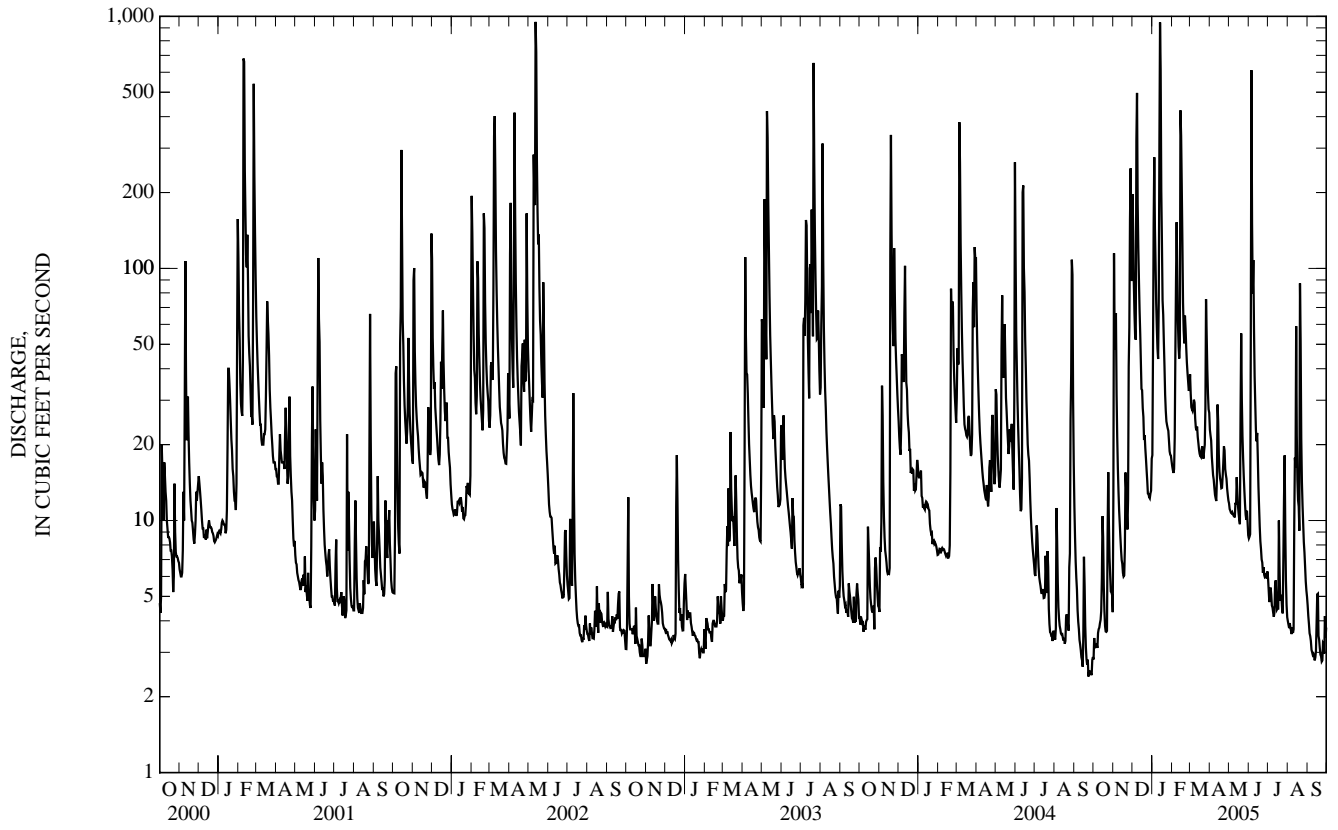
FOR 2005 WATER YEAR

WATER YEARS 1990 - 2005

ANNUAL TOTAL	10,308.1	13,564.8	
ANNUAL MEAN	28.2	37.2	39.4
HIGHEST ANNUAL MEAN			76.6
LOWEST ANNUAL MEAN			19.1
HIGHEST DAILY MEAN	497	Dec 8	946
LOWEST DAILY MEAN	2.4	Sep 23	2.8
ANNUAL SEVEN-DAY MINIMUM	2.5	Sep 22	2.9
MAXIMUM PEAK FLOW			1,170
MAXIMUM PEAK STAGE			9.60
ANNUAL RUNOFF (CFSM)	0.749		0.988
ANNUAL RUNOFF (INCHES)	10.20		13.42
10 PERCENT EXCEEDS	67		74
50 PERCENT EXCEEDS	12		13
90 PERCENT EXCEEDS	3.5		3.7
			2,580
			0.61
			0.95
			3,010
			15.33
			1.05
			14.24
			89
			12
			3.8

e Estimated

DES PLAINES RIVER BASIN
05536179 HART DITCH AT DYER, IN—Continued



05536190 HART DITCH AT MUNSTER, IN

LOCATION.--Lat 41°33'40", long 87°28'50", in SE $\frac{1}{4}$ NW $\frac{1}{4}$ sec.20, T.36 N., R.9 W., Lake County, Hydrologic Unit 07120003, (HIGHLAND, IN quadrangle), on left bank, 0.2 mi downstream from Ridge Road, 0.4 mi upstream from mouth, and 0.9 mi south of intersection of Interstate 80/90 and U.S. Highway 41.

DRAINAGE AREA.--70.7 mi².

PERIOD OF RECORD.--September 1942 to current year.

REVISED RECORDS.--WDR IN-72-1: Drainage area.

GAGE.--Water-stage recorder. Datum of gage is 591.27 ft above National Geodetic Vertical Datum of 1929 (levels by State of Indiana, Department of Natural Resources).

REMARKS.--Records poor.

DISCHARGE, CUBIC FEET PER SECOND
WATER YEAR OCTOBER 2004 TO SEPTEMBER 2005
DAILY MEAN VALUES

DAY	OCT	NOV	DEC	JAN	FEB	MAR	APR	MAY	JUN	JUL	AUG	SEP
1	13	324	812	e44	41	97	54	30	19	18	16	14
2	26	497	596	e117	40	83	55	29	22	16	15	14
3	13	262	406	e693	40	73	51	28	23	15	14	14
4	14	340	299	1,080	45	75	46	25	360	15	18	14
5	12	279	219	e634	67	84	43	26	1,650	17	14	13
6	12	144	194	438	146	77	41	25	526	16	13	13
7	12	90	1,340	e233	463	81	42	24	162	14	13	13
8	18	67	1,710	e156	685	75	38	24	190	14	13	13
9	16	55	997	123	395	63	36	24	115	13	13	12
10	13	48	693	115	202	60	35	24	76	13	13	12
11	13	42	501	299	130	63	34	41	63	13	56	12
12	13	38	325	1,250	110	68	70	38	52	17	45	13
13	13	36	201	2,550	200	61	71	36	89	18	88	12
14	84	34	117	2,160	1,520	57	57	29	77	15	130	14
15	232	33	76	1,270	1,360	62	45	25	51	14	60	45
16	55	31	72	912	981	77	39	24	38	14	40	81
17	35	32	61	e615	581	75	37	23	33	14	32	23
18	29	36	58	e400	315	73	37	21	29	30	34	16
19	24	69	49	e248	199	85	34	117	27	20	32	27
20	22	60	47	138	186	65	32	117	25	15	378	16
21	21	52	43	83	225	56	33	58	22	16	175	14
22	19	44	40	69	175	51	76	42	21	15	68	14
23	155	39	37	e67	131	64	55	35	19	14	45	13
24	75	123	34	62	108	56	57	30	20	13	34	12
25	50	234	32	60	97	101	46	28	18	38	29	22
26	37	246	30	59	89	186	41	26	17	144	26	18
27	32	545	30	53	83	131	37	24	17	96	24	14
28	30	853	30	48	94	91	36	23	20	35	21	37
29	52	480	31	46	---	72	32	23	19	23	20	31
30	41	395	32	45	---	66	31	22	23	19	17	19
31	29	---	46	43	---	67	---	21	---	17	15	---
TOTAL	1,210	5,528	9,158	14,110	8,708	2,395	1,341	1,062	3,823	751	1,511	585
MEAN	39.0	184	295	455	311	77.3	44.7	34.3	127	24.2	48.7	19.5
MAX	232	853	1,710	2,550	1,520	186	76	117	1,650	144	378	81
MIN	12	31	30	43	40	51	31	21	17	13	13	12
CFSM	0.55	2.61	4.18	6.44	4.40	1.09	0.63	0.48	1.80	0.34	0.69	0.28
IN.	0.64	2.91	4.82	7.42	4.58	1.26	0.71	0.56	2.01	0.40	0.80	0.31

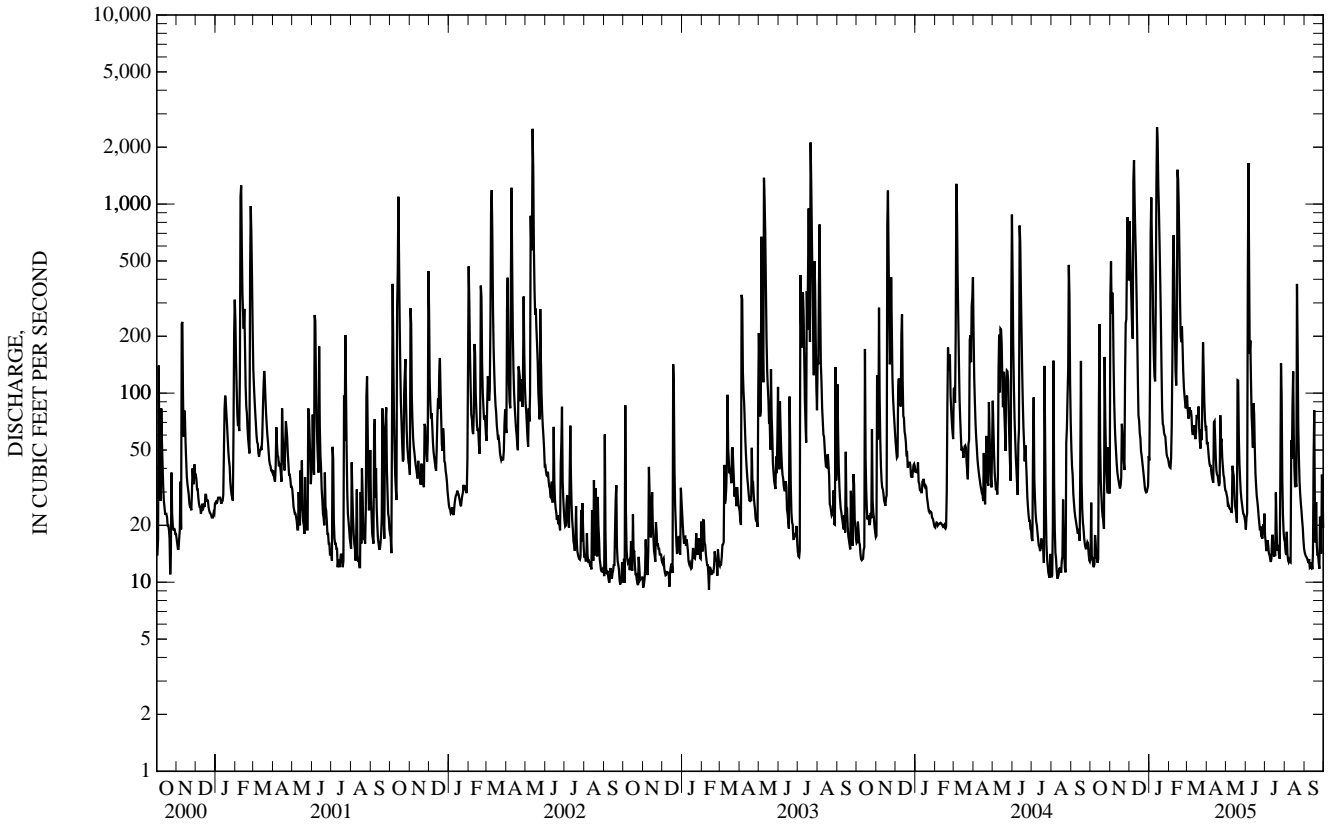
STATISTICS OF MONTHLY MEAN DATA FOR WATER YEARS 1943 - 2005, BY WATER YEAR (WY)

MEAN	33.1	54.9	67.6	73.1	91.6	135	129	105	75.9	41.5	32.0	27.9
MAX	282	287	295	455	479	429	430	373	423	346	156	219
(WY)	(1955)	(1986)	(2005)	(2005)	(1997)	(1979)	(1999)	(1996)	(1993)	(2003)	(1998)	(1993)
MIN	3.95	3.54	3.07	3.77	6.32	19.1	19.2	11.9	8.78	6.11	4.73	3.91
(WY)	(1965)	(1972)	(1964)	(1977)	(1963)	(1957)	(1946)	(1958)	(1965)	(1965)	(1964)	(1956)

05536190 HART DITCH AT MUNSTER, IN—Continued

SUMMARY STATISTICS	FOR 2004 CALENDAR YEAR		FOR 2005 WATER YEAR		WATER YEARS 1943 - 2005	
ANNUAL TOTAL	36,782		50,182		72.1	
ANNUAL MEAN	100		137		160	
HIGHEST ANNUAL MEAN					19.2	1993
LOWEST ANNUAL MEAN					19.2	1964
HIGHEST DAILY MEAN	1,710	Dec 8	2,550	Jan 13	2,600	Nov 28, 1990
LOWEST DAILY MEAN	10	Aug 10	12	Oct 5	1.6	Dec 24, 1963
ANNUAL SEVEN-DAY MINIMUM	11	Aug 10	12	Sep 7	1.7	Sep 3, 1964
MAXIMUM PEAK FLOW			2,670	Jan 13	3,010	Nov 28, 1990
MAXIMUM PEAK STAGE			7.94	Jan 13	8.72	Nov 28, 1990
ANNUAL RUNOFF (CFSM)	1.42		1.94		1.02	
ANNUAL RUNOFF (INCHES)	19.35		26.40		13.85	
10 PERCENT EXCEEDS	233		331		153	
50 PERCENT EXCEEDS	36		41		25	
90 PERCENT EXCEEDS	14		14		6.2	

e Estimated



05536195 LITTLE CALUMET RIVER AT MUNSTER, IN

LOCATION.--Lat 41°34'38", long 87°31'17", in SE¹/₄NW¹/₄ sec.13, T.36 N., R.10 W., Lake County, Hydrologic Unit 07120003, (CALUMET CITY, IL-IN quadrangle), on left bank 200 ft upstream from Hohman Avenue bridge at north city limits of Munster, 0.4 mi upstream from Indiana-Illinois State line, and 4.6 mi upstream from Thorn Creek.

DRAINAGE AREA.--90.0 mi². During times of floods on Deep River, flow may enter basin from eastern portion of Little Calumet River Basin; or, during times of floods on Hart Ditch, flow may leave the basin and enter eastern portion of the Little Calumet River Basin.

PERIOD OF RECORD.--June 1958 to current year.

GAGE.--Water-stage recorder. Datum of gage is 580.72 ft above National Geodetic Vertical Datum of 1929.

REMARKS.--Records poor. Flow from eastern portion of Little Calumet River Basin is diverted to Lake Michigan by Burns Ditch. Periods of high flow frequently are in backwater from downstream storage.

DISCHARGE, CUBIC FEET PER SECOND
WATER YEAR OCTOBER 2004 TO SEPTEMBER 2005
DAILY MEAN VALUES

DAY	OCT	NOV	DEC	JAN	FEB	MAR	APR	MAY	JUN	JUL	AUG	SEP
1	12	135	239	28	e22	51	34	21	20	e14	9.4	11
2	21	191	212	101	e22	45	34	20	21	e13	9.1	11
3	12	127	173	167	e21	41	32	19	26	e11	8.8	11
4	12	152	148	267	e23	41	29	18	75	e12	15	11
5	11	127	129	190	e32	45	27	18	339	e13	10	11
6	11	94	119	e147	e75	40	26	18	223	e12	9.3	11
7	11	74	355	e103	134	41	26	18	111	e11	9.5	10
8	14	62	459	e81	190	40	25	18	93	e11	9.3	11
9	16	53	331	65	144	35	23	18	79	e10	9.6	10
10	12	47	244	61	99	34	23	18	62	e10	10	10
11	11	42	206	91	74	35	22	27	51	e11	39	10
12	11	38	162	273	66	36	35	27	40	e14	36	10
13	10	35	123	669	75	34	42	27	51	e14	60	9.5
14	17	34	96	e547	326	33	35	23	58	e12	80	11
15	138	35	75	e279	382	32	29	20	42	e11	45	20
16	55	38	64	e176	291	35	25	19	35	e11	28	71
17	36	40	53	e104	191	35	24	18	31	e11	22	19
18	29	43	45	e83	e104	34	24	17	e24	e23	21	13
19	25	59	40	e66	e80	40	23	50	e21	e16	23	19
20	21	54	e37	e56	89	34	22	59	e19	e11	118	14
21	19	56	e33	e45	90	30	22	40	e17	e12	103	11
22	19	57	e28	e38	81	28	43	31	e16	e12	48	11
23	93	57	e26	e35	69	32	34	27	e15	e11	31	9.6
24	74	86	e23	e33	60	29	34	24	e15	e11	23	9.0
25	50	130	e21	e32	55	42	29	22	e14	43	19	15
26	40	117	e20	e32	50	65	26	22	e14	76	17	16
27	35	165	e20	e29	46	60	24	21	e13	96	15	10
28	35	238	e20	e26	51	50	23	20	e16	26	14	19
29	55	189	e20	e25	---	43	22	21	e15	14	14	29
30	51	163	20	e25	---	42	21	21	e18	10	13	14
31	49	---	25	e24	---	46	---	20	---	9.6	12	---
TOTAL	1,005	2,738	3,566	3,898	2,942	1,228	838	742	1,574	571.6	881.0	447.1
MEAN	32.4	91.3	115	126	105	39.6	27.9	23.9	52.5	18.4	28.4	14.9
MAX	138	238	459	669	382	65	43	59	339	96	118	71
MIN	10	34	20	24	21	28	21	17	13	9.6	8.8	9.0
CFSM	0.36	1.01	1.28	1.40	1.17	0.44	0.31	0.27	0.58	0.20	0.32	0.17
IN.	0.42	1.13	1.47	1.61	1.22	0.51	0.35	0.31	0.65	0.24	0.36	0.18

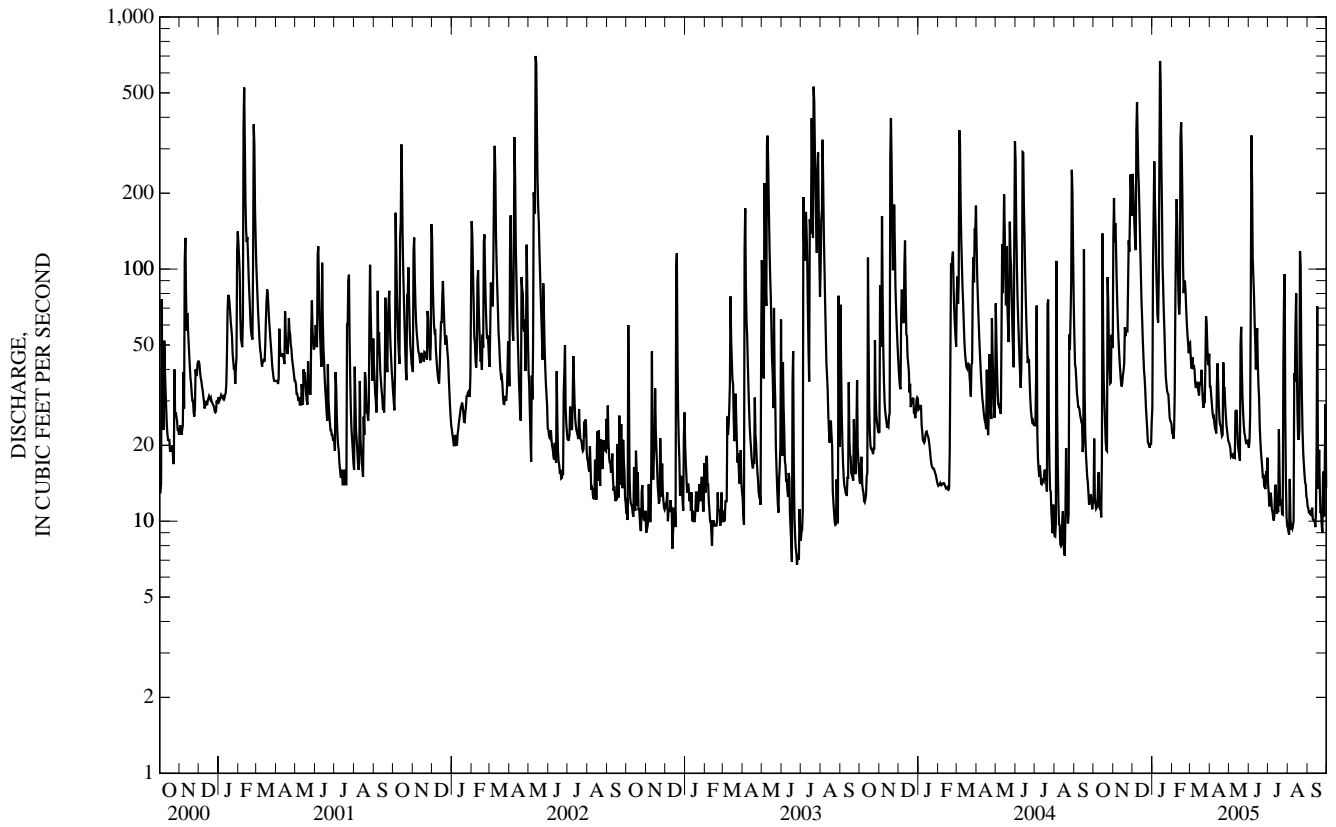
STATISTICS OF MONTHLY MEAN DATA FOR WATER YEARS 1959 - 2005, BY WATER YEAR (WY)

MEAN	34.7	59.0	72.4	63.0	82.1	121	121	92.5	70.5	41.6	37.3	38.3
MAX	151	212	301	199	252	386	268	266	222	185	141	217
(WY)	(1994)	(1973)	(1983)	(1993)	(1959)	(1979)	(1973)	(1959)	(1993)	(1996)	(1990)	(1965)
MIN	6.47	5.29	7.12	7.32	8.49	18.2	21.3	18.1	11.2	9.56	7.28	5.54
(WY)	(1969)	(1972)	(1961)	(1961)	(1963)	(2000)	(1963)	(1992)	(1965)	(1991)	(1964)	(1966)

05536195 LITTLE CALUMET RIVER AT MUNSTER, IN—Continued

SUMMARY STATISTICS	FOR 2004 CALENDAR YEAR		FOR 2005 WATER YEAR		WATER YEARS 1959 - 2005	
ANNUAL TOTAL	21,057.3		20,430.7		69.4	
ANNUAL MEAN	57.5		56.0		23.5	
HIGHEST ANNUAL MEAN					121	1973
LOWEST ANNUAL MEAN					23.5	1964
HIGHEST DAILY MEAN	459	Dec 8	669	Jan 13	1,160	Apr 28, 1959
LOWEST DAILY MEAN	7.3	Aug 17	8.8	Aug 3	1.9	Aug 16, 1964
ANNUAL SEVEN-DAY MINIMUM	8.6	Aug 11	10	Sep 7	2.2	Sep 2, 1964
MAXIMUM PEAK FLOW			708	Jan 13	1,510	Apr 28, 1959
MAXIMUM PEAK STAGE			13.60	Jan 13	17.03	Nov 28, 1990
ANNUAL RUNOFF (CFSM)	0.639		0.622		0.771	
ANNUAL RUNOFF (INCHES)	8.70		8.44		10.47	
10 PERCENT EXCEEDS	134		132		172	
50 PERCENT EXCEEDS	33		29		31	
90 PERCENT EXCEEDS	12		11		9.0	

e Estimated



05536357 GRAND CALUMET RIVER AT HOHMAN AVE AT HAMMOND, IN

LOCATION.--Lat 41°37'28", long 87°31'04", in NE $\frac{1}{4}$ NW $\frac{1}{4}$ sec. 36, T37 N., R10 W., Lake County, Hydrologic Unit 07120003, (CALUMET CITY, IL-IN quadrangle), on left bank, 20 feet upstream of Hohman Avenue, 1,000 feet east of Indiana-Illinois State line, 0.57 mi downstream of U.S. Highway 41, and 0.7 mi north of St. Margaret's Hospital (Hohman Avenue).

DRAINAGE AREA.--Indeterminate.

PERIOD OF RECORD.--October 1991 to current year.

GAGE.--Water-stage recorder. Datum of gage is 575.00 ft above National Geodetic Vertical Datum of 1929.

REMARKS.--Records poor.

DISCHARGE, CUBIC FEET PER SECOND
WATER YEAR OCTOBER 2004 TO SEPTEMBER 2005
DAILY MEAN VALUES

DAY	OCT	NOV	DEC	JAN	FEB	MAR	APR	MAY	JUN	JUL	AUG	SEP
1	0.20	28	21	1.7	1.3	6.4	6.7	4.1	4.2	e1.4	e1.5	3.7
2	7.5	16	8.9	20	1.4	5.3	7.7	5.6	3.5	e1.4	e1.5	1.7
3	0.45	8.9	7.6	17	1.2	4.2	6.6	5.3	7.1	e1.3	e1.9	2.1
4	0.80	21	5.8	15	1.6	3.3	7.4	4.6	11	e1.4	e1.5	3.5
5	0.19	8.0	5.0	13	3.0	5.2	6.9	5.4	30	e1.4	e1.5	2.9
6	0.48	4.0	6.7	7.9	3.7	4.2	7.5	5.0	14	e1.3	e1.4	1.6
7	0.30	4.8	60	5.4	7.3	5.0	7.9	4.6	5.8	e1.2	e1.5	1.6
8	2.3	3.2	28	3.5	9.4	7.8	7.7	4.4	5.2	e1.2	e1.9	2.8
9	0.97	3.2	17	3.6	7.3	4.1	7.2	4.1	5.7	e1.2	e5.0	1.5
10	1.1	1.7	18	3.7	7.2	5.0	8.2	3.9	8.7	e1.3	8.9	1.9
11	0.26	2.8	16	8.2	4.3	4.2	7.3	10	3.3	e1.5	22	1.1
12	0.72	2.3	12	32	4.1	5.4	15	12	2.6	e1.7	11	0.65
13	0.30	2.5	11	139	7.0	6.9	14	7.4	4.8	e1.4	20	0.39
14	3.0	1.5	9.5	63	27	3.7	10	8.4	9.9	e1.3	15	0.55
15	13	1.2	6.0	33	18	3.5	8.5	4.1	2.9	e1.3	6.3	4.7
16	5.1	1.4	4.9	14	16	3.5	9.0	3.4	2.7	e1.3	4.0	27
17	1.8	1.2	4.5	10	11	3.4	8.1	3.8	2.6	e2.5	2.6	1.4
18	0.37	1.4	e4.2	7.7	8.0	3.7	8.2	4.5	e2.4	e1.8	8.2	0.96
19	0.84	8.6	e3.7	6.7	6.6	5.4	7.6	18	e2.2	e1.5	7.8	1.0
20	1.0	3.9	3.0	5.5	8.5	3.7	8.9	10	e2.0	e1.6	20	0.43
21	0.52	2.0	2.0	4.1	9.0	3.7	8.4	7.8	e1.9	e1.5	9.1	e0.20
22	0.31	2.4	e1.8	e3.6	8.5	3.3	17	3.8	e1.7	e1.5	7.0	e0.21
23	16	1.5	e1.9	e3.1	5.9	5.6	20	6.9	e1.8	e1.4	6.0	e0.23
24	1.7	15	e1.7	2.5	5.2	4.4	15	7.2	e1.7	e3.5	6.8	e0.21
25	1.2	14	e1.7	2.2	4.8	6.2	8.5	6.2	e1.6	e1.4	4.3	5.1
26	0.76	5.7	e1.7	e2.1	5.0	6.3	7.3	4.0	e1.6	e8.6	5.1	1.7
27	1.1	8.8	e1.5	e1.9	3.7	5.8	6.5	5.1	e1.9	e3.8	5.5	2.0
28	0.90	9.2	e1.4	e1.5	8.7	5.5	6.5	3.7	e1.7	e2.5	5.6	e6.5
29	4.4	7.3	1.2	1.4	---	4.6	6.5	2.9	e2.1	e1.9	4.1	8.1
30	1.3	7.3	e1.2	e1.4	---	6.6	4.7	2.9	e1.6	e1.6	5.5	e0.50
31	0.53	---	1.3	e1.3	---	14	---	4.1	---	e1.6	7.6	---
TOTAL	69.40	198.8	270.2	435.0	204.7	159.9	270.8	183.2	148.2	70.9	210.1	86.23
MEAN	2.24	6.63	8.72	14.0	7.31	5.16	9.03	5.91	4.94	2.29	6.78	2.87
MAX	16	28	60	139	27	14	20	18	30	14	22	27
MIN	0.19	1.2	1.2	1.3	1.2	3.3	4.7	2.9	1.6	1.2	1.4	0.20

STATISTICS OF MONTHLY MEAN DATA FOR WATER YEARS 1991 - 2005, BY WATER YEAR (WY)

MEAN	26.9	26.5	22.9	22.6	26.0	27.8	32.5	35.9	38.4	39.9	32.9	27.8
MAX	80.4	63.7	65.2	66.8	95.9	81.5	90.8	85.9	98.8	102	93.9	88.9
(WY)	(1998)	(1998)	(1998)	(1998)	(1997)	(1998)	(1998)	(1997)	(1993)	(1993)	(1997)	(1997)
MIN	2.24	2.09	2.03	0.99	1.08	5.16	3.98	5.91	4.92	2.29	4.54	1.22
(WY)	(2005)	(2003)	(2003)	(2004)	(2004)	(2005)	(2004)	(2005)	(2003)	(2005)	(2002)	(2002)

SUMMARY STATISTICS

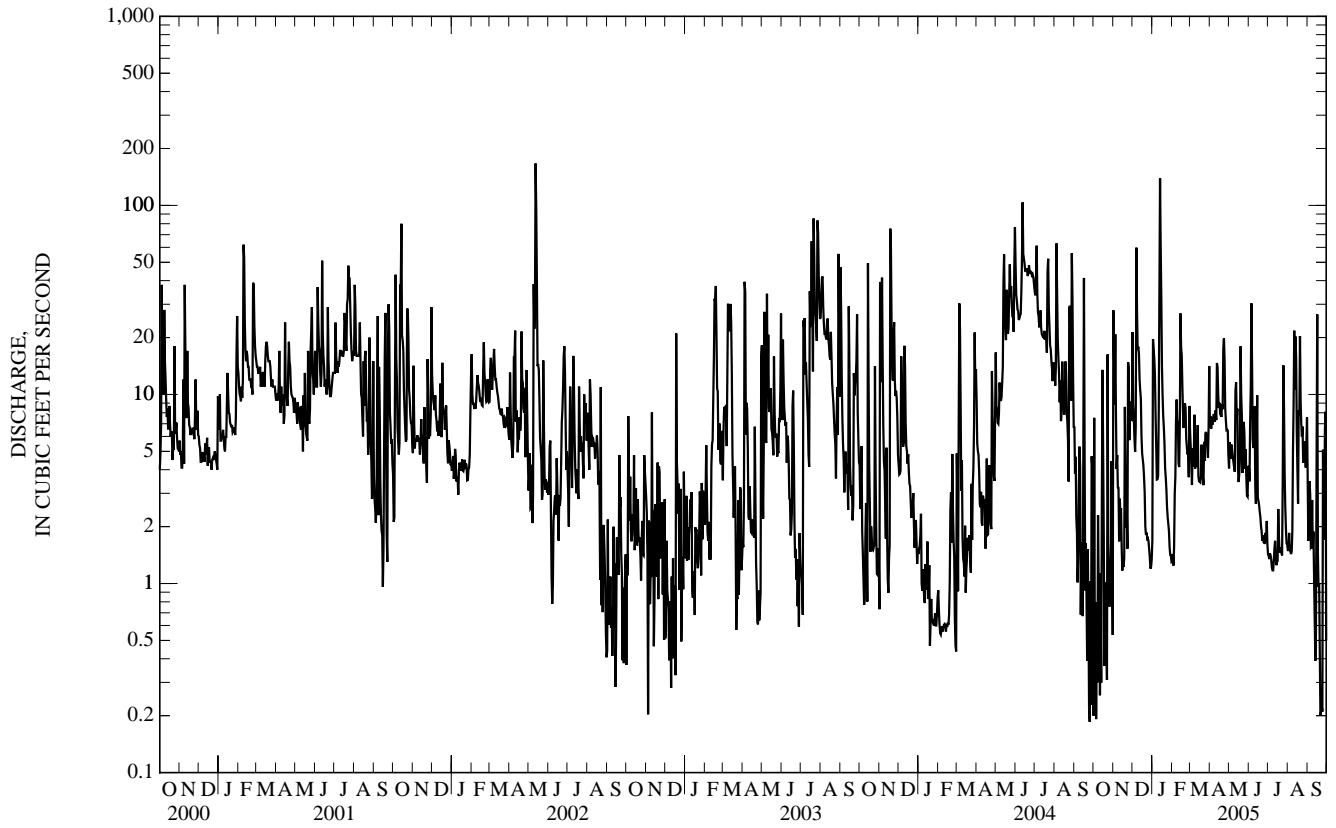
FOR 2004 CALENDAR YEAR

FOR 2005 WATER YEAR

WATER YEARS 1991 - 2005

ANNUAL TOTAL	4,343.16	2,307.43	
ANNUAL MEAN	11.9	6.32	30.0
HIGHEST ANNUAL MEAN			76.2
LOWEST ANNUAL MEAN			6.32
HIGHEST DAILY MEAN	104	Jun 12	464
LOWEST DAILY MEAN	0.19	Sep 25	0.19
ANNUAL SEVEN-DAY MINIMUM	0.57	Feb 3	0.46
MAXIMUM PEAK FLOW			162
MAXIMUM PEAK STAGE			5.63
10 PERCENT EXCEEDS	35		14
50 PERCENT EXCEEDS	4.5		4.1
90 PERCENT EXCEEDS	0.62		1.2

e Estimated



Special study and miscellaneous sites

STREAMS TRIBUTARY TO OHIO RIVER BASIN

Wabash River Basin

Streamflow was measured near the Cinergy PSI's Cayuga power plant coolant water pumping station. Measurements were made to determine discharge at this non-continuous gaging site. They were collected in cooperation with Cinergy PSI, through the Indiana Department of Natural Resources.

Stream	Tributary to	Location	Drainage area mi ²	Measurement date	Discharge (ft ³ /s)
Wabash River	Ohio River	Lat 39°55'34"N, long 87°25'34"W, at the Cinergy PSI's Cayuga power plant southeast of Cayuga, Vermillion County, IN.	10,004	10-19-04	3,370
				06-08-05	3,850
				06-29-05	3,090
				08-17-05	2,980
				09-07-05	1,540

Streamflow was measured at the downstream side of the Lincoln Memorial Bridge on Vigo Street in Vincennes at the request of the U.S. Army Corps of Engineers during flood stage.

Stream	Tributary to	Location	Drainage area mi ²	Measurement date	Discharge (ft ³ /s)
Wabash River	Ohio River	Lat 30°40'53"N, long 87°32'06"W, at the Lincoln Memorial Bridge on Vigo Street in Vincennes, Knox County, IN	13,706	01-19-05	92,200

STREAMS TRIBUTARY TO WABASH RIVER BASIN

White River Basin

Streamflow was measured at points other than continuous gaging stations at one site in the White River Basin. This data was collected at a basic fixed site as a part of the National Water Quality Assessment Programs (NAWQA) habitat assessment.

Stream	Tributary to	Location	Drainage area mi ²	Measurement date	Discharge (ft ³ /s)
White R at Hazelton	Wabash River	Lat 38°29'23"N, long 87°33'33"W NAD27 1500 ft downstream of boat ramp in Hazelton, Gibson County, IN	11,305	07-30-02	3,690
				08-14-03	6,750
				08-25-04	3,400