

03330241 TIPPECANOE RIVER AT NORTH WEBSTER, IN

LOCATION.--Lat 41°18'58", long 85°41'32", in SE<sup>1</sup>/<sub>4</sub>NE<sup>1</sup>/<sub>4</sub> sec.15, T.33 N., R.7 E., Kosciusko County, Hydrologic Unit 05120106, (NORTH WEBSTER, IN quadrangle), on right upstream corner of State Road 13 bridge, at the intersection of State Road 13 and County Road 550 North, 0.4 mi southeast of North Webster, and 0.5 mi north of intersection of State Road 13 and 500 North.

DRAINAGE AREA.--49.3 mi<sup>2</sup>.

PERIOD OF RECORD.--May 1986 to current year.

GAGE.--Water-stage recorder. Datum of gage is 840.00 ft above National Geodetic Vertical Datum of 1929.

REMARKS.--Records fair except those for Oct. 18-27, July 14-Sept. 30, and estimated daily discharges, which are poor. Flow regulated by dams at Webster Lake, 0.25 mi upstream.

DISCHARGE, CUBIC FEET PER SECOND  
WATER YEAR OCTOBER 2004 TO SEPTEMBER 2005  
DAILY MEAN VALUES

DAY	OCT	NOV	DEC	JAN	FEB	MAR	APR	MAY	JUN	JUL	AUG	SEP
1	7.8	7.9	155	e24	e137	120	42	46	75	28	7.7	6.2
2	7.1	11	152	e25	e132	117	44	58	79	21	8.5	6.9
3	6.0	13	139	43	e130	99	43	56	76	12	10	11
4	9.7	35	105	76	e129	63	43	55	76	14	12	11
5	8.6	37	103	91	e129	45	43	57	68	14	10	11
6	6.9	7.8	99	132	e128	46	42	50	61	14	10	10
7	5.2	6.7	126	139	e128	60	41	43	52	13	10	10
8	4.8	5.7	119	155	e129	71	38	50	40	11	11	8.9
9	5.9	5.4	79	162	e131	84	36	53	35	12	11	8.6
10	5.4	5.1	88	156	e134	89	39	51	29	12	11	6.0
11	4.4	4.4	115	152	e139	100	39	51	22	14	12	3.6
12	6.6	3.7	127	154	e144	99	40	51	24	15	12	2.7
13	5.4	3.8	138	149	e151	97	39	66	26	7.1	11	0.86
14	3.6	3.8	124	255	e160	93	37	111	24	8.5	11	0.14
15	3.4	4.2	95	e295	179	77	36	99	20	9.4	11	0.10
16	3.0	6.4	80	e292	212	48	36	57	19	10	11	1.0
17	3.3	11	43	e301	230	41	37	46	20	11	11	0.54
18	2.0	11	16	e296	281	46	39	45	20	12	10	0.90
19	1.2	17	e16	e280	315	39	31	54	18	15	9.5	2.9
20	1.5	26	e15	e264	305	40	15	68	18	13	9.4	1.9
21	1.3	25	e15	e249	306	39	11	48	19	11	8.4	0.94
22	1.1	25	e15	e238	297	38	5.6	42	26	12	7.7	1.0
23	1.1	25	e15	e225	283	38	5.1	43	25	13	8.9	1.2
24	1.9	27	e15	e215	264	38	6.3	42	26	8.7	6.8	0.95
25	2.1	27	e14	e204	229	37	6.6	42	27	8.7	6.0	1.1
26	2.3	27	e14	e195	202	37	8.9	42	28	9.4	4.7	2.2
27	2.9	42	e14	e185	169	36	12	46	30	11	5.7	2.8
28	5.2	53	e15	e174	121	37	18	45	32	8.7	5.9	2.0
29	5.2	54	e17	e164	---	38	23	43	33	8.8	7.4	1.8
30	6.8	86	e20	e154	---	39	30	44	29	7.7	8.3	1.8
31	7.3	---	e23	e144	---	40	---	61	---	6.7	7.9	---
TOTAL	139.0	616.9	2,111	5,588	5,294	1,891	886.5	1,665	1,077	371.7	286.8	120.03
MEAN	4.48	20.6	68.1	180	189	61.0	29.6	53.7	35.9	12.0	9.25	4.00
MAX	9.7	86	155	301	315	120	44	111	79	28	12	11
MIN	1.1	3.7	14	24	121	36	5.1	42	18	6.7	4.7	0.10
CFSM	0.09	0.42	1.38	3.66	3.84	1.24	0.60	1.09	0.73	0.24	0.19	0.08
IN.	0.10	0.47	1.59	4.22	3.99	1.43	0.67	1.26	0.81	0.28	0.22	0.09

STATISTICS OF MONTHLY MEAN DATA FOR WATER YEARS 1987 - 2005, BY WATER YEAR (WY)

MEAN	37.0	39.9	51.4	74.1	65.9	64.0	74.2	52.8	51.4	25.6	24.0	20.5
MAX	147	133	102	209	189	137	139	119	138	77.0	80.1	102
(WY)	(2002)	(1993)	(2002)	(1993)	(2005)	(1997)	(2002)	(2002)	(1996)	(2003)	(1990)	(2003)
MIN	2.68	6.61	12.3	13.6	6.05	15.0	18.8	15.4	3.08	4.36	2.00	1.67
(WY)	(1995)	(1995)	(1996)	(2000)	(2000)	(2000)	(2004)	(1988)	(1988)	(1988)	(1988)	(1999)

SUMMARY STATISTICS

FOR 2004 CALENDAR YEAR

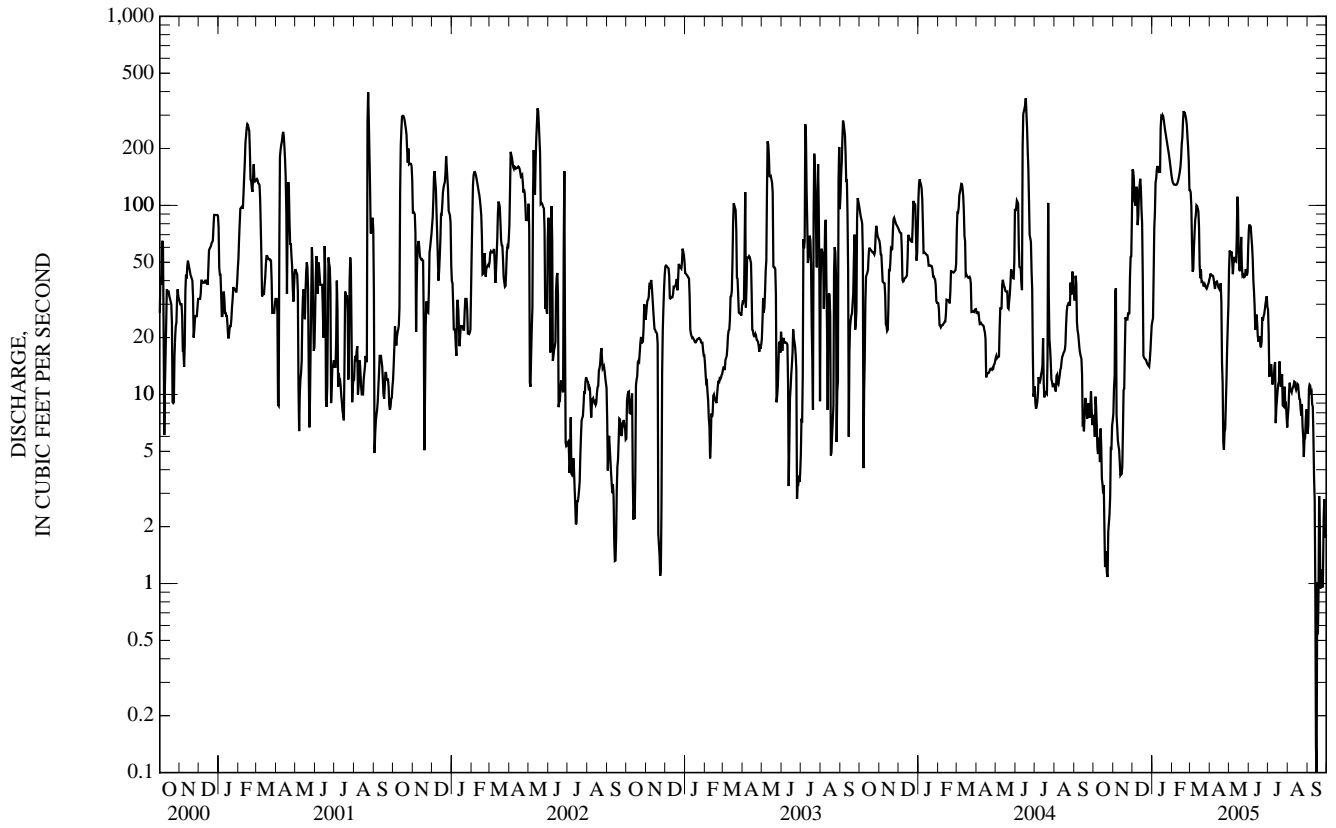
FOR 2005 WATER YEAR

WATER YEARS 1987 - 2005

ANNUAL TOTAL	15,062.6	20,046.93	
ANNUAL MEAN	41.2	54.9	48.3
HIGHEST ANNUAL MEAN			70.5
LOWEST ANNUAL MEAN			23.0
HIGHEST DAILY MEAN	369	Jun 17	420
LOWEST DAILY MEAN	1.1	Oct 22	0.06
ANNUAL SEVEN-DAY MINIMUM	1.4	Oct 18	0.36
MAXIMUM PEAK FLOW			446
MAXIMUM PEAK STAGE			6.49
ANNUAL RUNOFF (CFSM)	0.835		0.980
ANNUAL RUNOFF (INCHES)	11.37		13.31
10 PERCENT EXCEEDS	104		118
50 PERCENT EXCEEDS	25		30
90 PERCENT EXCEEDS	6.9		5.7

e Estimated

03330241 TIPPECANOE RIVER AT NORTH WEBSTER, IN—Continued



## 03330500 TIPPECANOE RIVER AT OSWEGO, IN

LOCATION.--Lat 41°19'14", long 85°47'21", in NE $\frac{1}{4}$ NE $\frac{1}{4}$  sec.14, T.33 N., R.6 E., Kosciusko County, Hydrologic Unit 05120106, (LEESBURG, IN quadrangle), on left bank 50 ft downstream from dam at Tippecanoe Lake Outlet in Oswego, 3 mi east of Leesburg, and at mile 158.9.

DRAINAGE AREA.--113 mi<sup>2</sup>.

PERIOD OF RECORD.--October 1949 to current year.

REVISED RECORDS.--WSP 2109: Drainage area.

GAGE.--Water-stage recorder. Datum of gage is 830.00 ft above National Geodetic Vertical Datum of 1929. Prior to Aug. 12, 1953, nonrecording gage at same site and datum.

REMARKS.--Records fair except for estimated daily discharges, which are poor. Regulation by gates at lake outlet.

DISCHARGE, CUBIC FEET PER SECOND  
WATER YEAR OCTOBER 2004 TO SEPTEMBER 2005  
DAILY MEAN VALUES

DAY	OCT	NOV	DEC	JAN	FEB	MAR	APR	MAY	JUN	JUL	AUG	SEP
1	13	31	149	95	e227	347	131	45	26	19	14	11
2	13	31	173	95	e206	329	129	46	16	18	14	10
3	13	30	194	104	e188	315	125	47	18	16	13	10
4	12	32	205	121	e175	297	124	48	19	15	13	11
5	12	34	213	145	e163	275	122	49	32	15	14	10
6	12	33	217	179	e155	255	122	50	94	15	14	10
7	12	32	228	217	e150	243	121	49	85	15	14	9.8
8	12	31	243	254	e149	237	120	47	25	14	13	9.8
9	13	29	248	280	151	230	116	45	16	14	13	9.5
10	12	28	252	292	155	225	69	43	17	14	13	9.4
11	12	43	259	305	160	224	37	22	35	13	13	9.2
12	12	44	261	328	167	222	38	14	41	13	13	9.1
13	12	39	261	373	179	218	40	18	42	13	14	8.8
14	12	36	265	419	217	212	33	162	41	12	15	8.5
15	12	33	256	467	257	205	25	200	22	13	15	8.3
16	11	31	243	511	309	193	29	186	16	13	15	9.5
17	11	30	227	e526	350	183	33	139	17	15	15	9.3
18	11	29	203	e524	383	175	58	58	18	15	14	9.2
19	11	30	181	e508	409	171	86	31	19	16	14	9.4
20	12	30	160	e484	424	164	88	100	20	16	14	9.7
21	13	31	145	e455	433	159	82	110	35	17	14	9.5
22	14	31	136	e427	437	154	77	106	39	18	14	9.2
23	14	32	131	e404	437	151	71	65	21	17	13	9.8
24	36	35	125	e382	433	145	48	26	14	16	12	9.4
25	43	59	120	e362	423	143	16	20	14	17	12	9.6
26	40	82	116	e343	407	142	13	22	14	17	12	11
27	36	92	111	e325	389	140	15	47	14	35	11	11
28	34	107	106	e311	366	137	40	55	16	41	11	11
29	33	118	102	e301	---	136	49	52	18	31	11	12
30	32	128	98	e284	---	134	47	51	20	20	12	11
31	32	---	96	e252	---	132	---	49	---	14	11	---
TOTAL	567	1,371	5,724	10,073	7,899	6,293	2,104	2,002	824	537	410	295.0
MEAN	18.3	45.7	185	325	282	203	70.1	64.6	27.5	17.3	13.2	9.83
MAX	43	128	265	526	437	347	131	200	94	41	15	12
MIN	11	28	96	95	149	132	13	14	14	12	11	8.3
CFSM	0.16	0.40	1.63	2.88	2.50	1.80	0.62	0.57	0.24	0.15	0.12	0.09
IN.	0.19	0.45	1.88	3.32	2.60	2.07	0.69	0.66	0.27	0.18	0.13	0.10

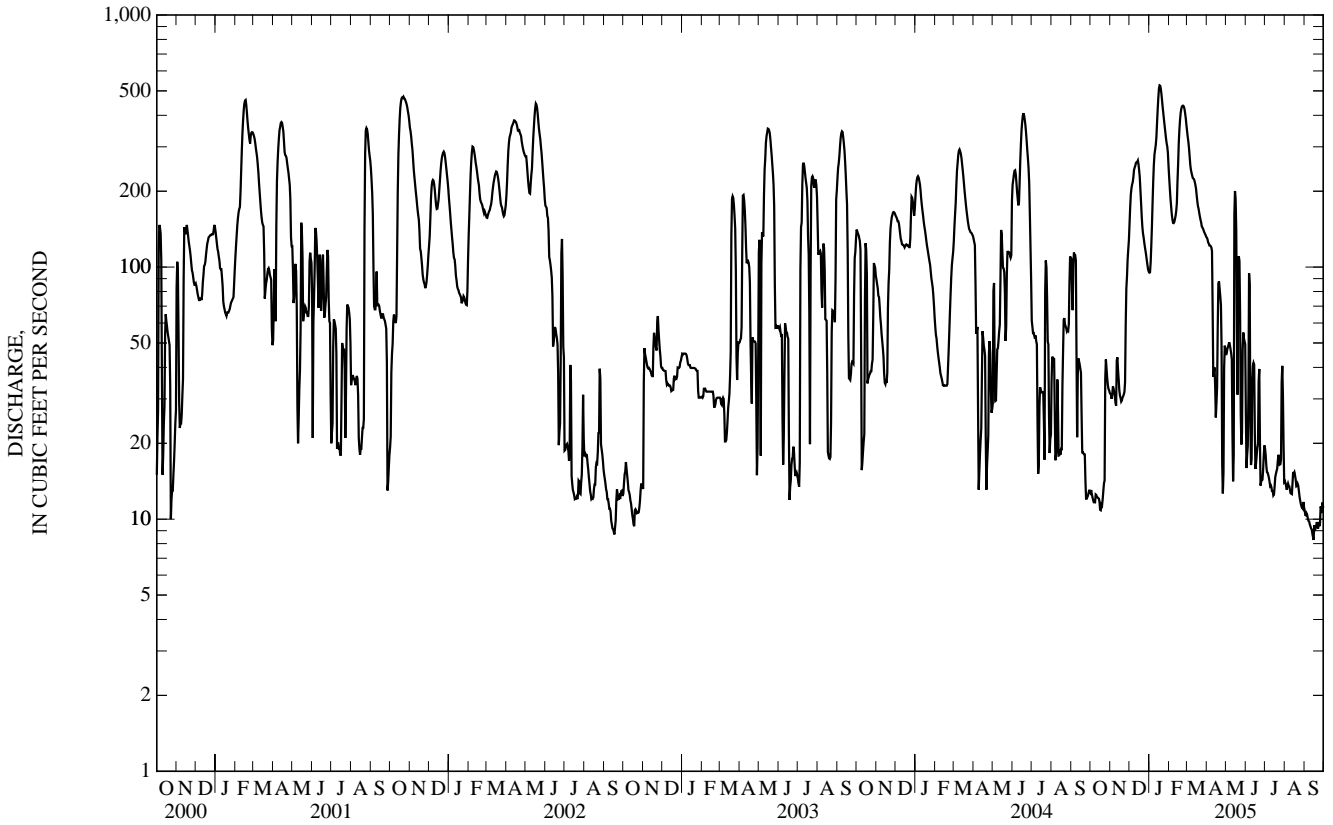
STATISTICS OF MONTHLY MEAN DATA FOR WATER YEARS 1950 - 2005, BY WATER YEAR (WY)

MEAN	60.4	75.9	111	131	143	182	188	132	103	64.5	46.6	45.6
MAX	369	230	298	443	373	498	493	340	363	198	188	237
(WY)	(1955)	(1993)	(1967)	(1950)	(1950)	(1982)	(1950)	(1956)	(1981)	(1968)	(1990)	(1958)
MIN	4.73	7.25	16.0	7.51	11.0	44.0	45.1	30.8	18.6	11.4	1.13	0.40
(WY)	(1954)	(1954)	(1963)	(1963)	(1963)	(1964)	(2004)	(1958)	(1988)	(1988)	(1967)	(1967)

03330500 TIPPECANOE RIVER AT OSWEGO, IN—Continued

SUMMARY STATISTICS	FOR 2004 CALENDAR YEAR		FOR 2005 WATER YEAR		WATER YEARS 1950 - 2005	
ANNUAL TOTAL	35,734		38,099.0		107	
ANNUAL MEAN	97.6		104		196	
HIGHEST ANNUAL MEAN					30.8	
LOWEST ANNUAL MEAN					1964	
HIGHEST DAILY MEAN	408	Jun 18	e 526	Jan 17	944	Mar 21, 1982
LOWEST DAILY MEAN	11	Oct 16	8.3	Sep 15	0.08	Aug 4, 1967
ANNUAL SEVEN-DAY MINIMUM	11	Oct 13	9.0	Sep 11	0.28	Aug 22, 1967
MAXIMUM PEAK FLOW			unknown		950	
MAXIMUM PEAK STAGE			unknown		9.25	
ANNUAL RUNOFF (CFSM)	0.864		0.924		0.945	
ANNUAL RUNOFF (INCHES)	11.76		12.54		12.84	
10 PERCENT EXCEEDS	233		294		243	
50 PERCENT EXCEEDS	58		39		75	
90 PERCENT EXCEEDS	17		11		15	

e Estimated



## WABASH RIVER BASIN

03331500 TIPPECANOE RIVER NEAR ORA, IN

LOCATION.--Lat 41°09'26", long 86°33'49", in SE $\frac{1}{4}$ SE $\frac{1}{4}$  sec.6, T.31 N., R.1 W., Pulaski County, Hydrologic Unit 05120106, (BASS LAKE, IN quadrangle), on right bank at downstream side of bridge on County Road 700 East, 1.0 mi upstream from Bartee Ditch, 1.3 mi southwest of Ora, and at mile 78.5.

DRAINAGE AREA.--856 mi<sup>2</sup>.

PERIOD OF RECORD.--September 1943 to current year. Monthly discharge only for some periods, published in WSP 1305.

REVISED RECORDS.--WSP 1335: 1944(M), WSP 1505: 1949-50(P), WSP 2109: Drainage area.

GAGE.--Water-stage recorder. Datum of gage is 692.91 ft above National Geodetic Vertical Datum of 1929 (levels by U.S. Army Corps of Engineers). Prior to July 30, 1956, nonrecording gage on upstream side of old highway bridge, 120 ft downstream. July 30, 1956, to Dec. 20, 1964, water-stage recorder on right bank at downstream side of old highway bridge, and Dec. 21, 1964, to Aug. 19, 1965, nonrecording gage on right bank 500 ft downstream. All gages at same datum.

REMARKS.--Records good except for estimated daily discharges, which are poor.

DISCHARGE, CUBIC FEET PER SECOND  
WATER YEAR OCTOBER 2004 TO SEPTEMBER 2005  
DAILY MEAN VALUES

DAY	OCT	NOV	DEC	JAN	FEB	MAR	APR	MAY	JUN	JUL	AUG	SEP
1	320	407	2,180	947	1,270	1,810	1,160	583	395	313	261	173
2	323	437	2,410	1,000	1,200	1,720	1,120	584	387	293	243	169
3	318	482	2,530	1,140	1,160	1,630	1,070	571	395	279	223	166
4	311	567	2,360	1,780	1,110	1,530	1,020	554	382	267	214	164
5	307	1,000	2,080	2,420	1,060	1,490	986	546	364	258	215	162
6	302	1,030	1,880	2,770	1,030	1,600	955	542	373	250	209	158
7	299	930	1,850	2,770	1,080	1,820	936	529	369	240	202	156
8	297	827	2,230	2,610	1,510	1,850	918	515	373	233	196	159
9	299	735	2,660	2,430	1,960	1,770	884	500	393	235	189	155
10	297	655	2,650	2,240	2,060	1,670	845	489	385	227	189	155
11	295	589	2,330	2,140	1,950	1,600	806	475	358	218	198	153
12	298	558	2,080	2,370	1,820	1,530	780	468	339	213	212	152
13	298	532	1,970	3,480	1,760	1,460	755	464	372	212	238	154
14	328	499	1,830	6,160	2,100	1,380	706	512	454	227	255	160
15	331	481	1,650	e7,150	3,140	1,300	677	563	488	217	307	161
16	323	476	1,490	e6,250	4,250	1,250	658	612	473	231	298	184
17	312	466	1,370	e5,180	4,280	1,220	634	629	432	248	271	193
18	307	463	1,280	e4,250	3,980	1,190	612	629	386	241	249	188
19	318	509	1,200	3,560	3,410	1,180	601	627	351	260	234	191
20	329	659	1,110	3,180	2,990	1,170	588	637	335	262	221	184
21	330	698	993	2,920	2,740	1,150	598	592	320	261	212	178
22	328	669	940	2,670	2,730	1,120	622	543	308	330	204	178
23	331	625	886	2,440	2,750	1,090	670	533	295	397	202	181
24	342	621	e800	2,200	2,570	1,060	695	527	289	365	196	185
25	342	989	645	2,030	2,380	1,050	699	509	288	322	189	189
26	339	1,410	e768	1,920	2,220	1,190	687	479	283	291	186	241
27	338	1,510	e760	1,810	2,060	1,360	672	439	267	313	183	265
28	350	1,890	e752	1,650	1,910	1,350	635	410	267	367	179	263
29	356	2,230	e756	1,580	---	1,310	608	394	381	322	174	268
30	377	2,230	e774	1,490	---	1,260	589	396	342	297	174	270
31	396	---	e800	1,370	---	1,210	---	403	---	287	174	---
TOTAL	10,041	25,174	48,014	85,907	62,480	43,320	23,186	16,254	10,844	8,476	6,697	5,555
MEAN	324	839	1,549	2,771	2,231	1,397	773	524	361	273	216	185
MAX	396	2,230	2,660	7,150	4,280	1,850	1,160	637	488	397	307	270
MIN	295	407	645	947	1,030	1,050	588	394	267	212	174	152
CFSM	0.38	0.98	1.81	3.24	2.61	1.63	0.90	0.61	0.42	0.32	0.25	0.22
IN.	0.44	1.09	2.09	3.73	2.72	1.88	1.01	0.71	0.47	0.37	0.29	0.24

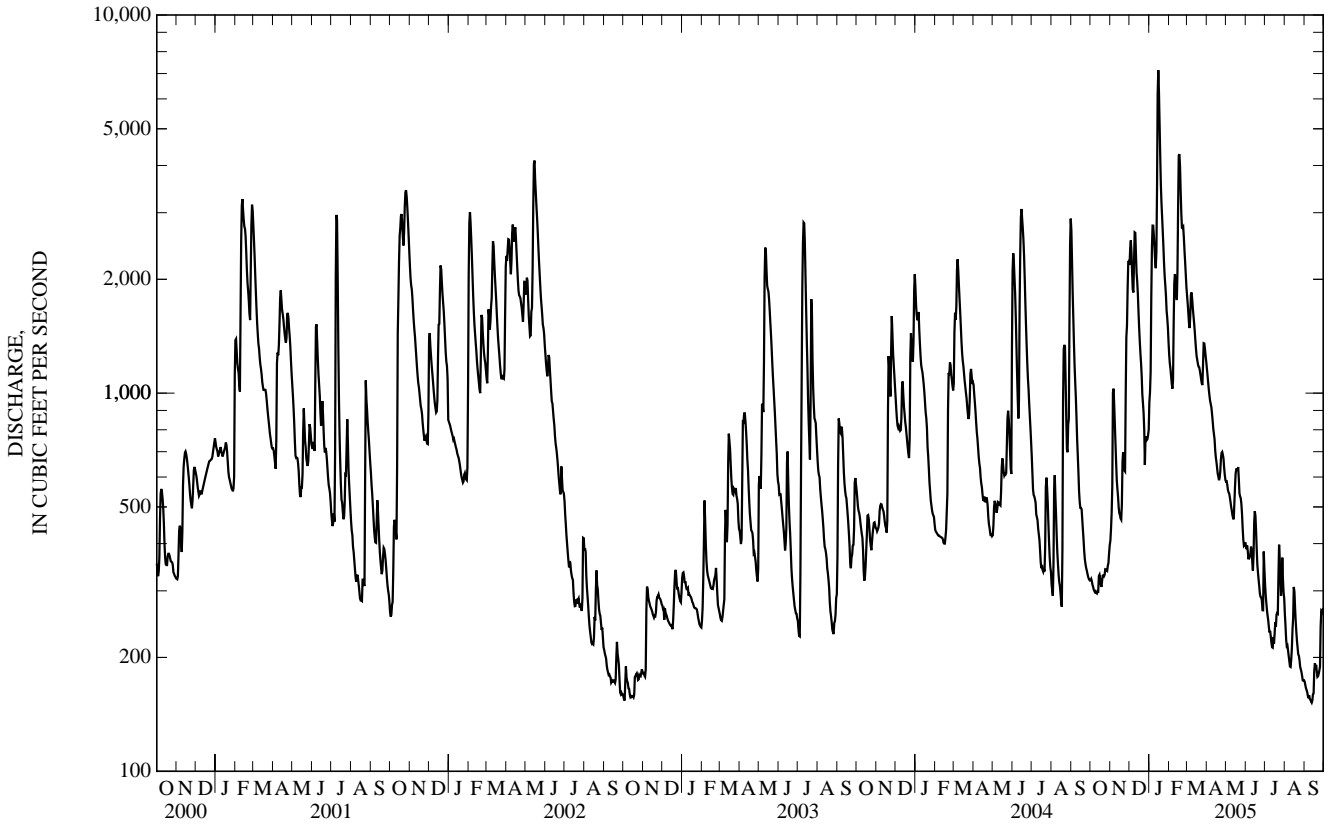
## STATISTICS OF MONTHLY MEAN DATA FOR WATER YEARS 1944 - 2005, BY WATER YEAR (WY)

MEAN	473	607	815	1,016	1,184	1,443	1,522	1,132	919	621	439	371
MAX	2,112	1,933	2,478	3,552	3,020	4,239	4,116	2,869	3,468	1,943	2,699	1,224
(WY)	(1991)	(1973)	(1967)	(1950)	(1959)	(1982)	(1950)	(1981)	(1981)	(1996)	(1990)	(1958)
MIN	134	155	177	183	192	451	525	337	243	180	155	107
(WY)	(1954)	(1954)	(1964)	(1963)	(1963)	(1957)	(1958)	(1958)	(1988)	(1988)	(1988)	(1966)

03331500 TIPPECANOE RIVER NEAR ORA, IN—Continued

SUMMARY STATISTICS	FOR 2004 CALENDAR YEAR		FOR 2005 WATER YEAR		WATER YEARS 1944 - 2005	
ANNUAL TOTAL	323,012		345,948			
ANNUAL MEAN	883		948		876	
HIGHEST ANNUAL MEAN					1,580	1950
LOWEST ANNUAL MEAN					354	1964
HIGHEST DAILY MEAN	3,070	Jun 15	e 7,150	Jan 15	8,450	Jun 15, 1981
LOWEST DAILY MEAN	272	Aug 17	152	Sep 12	87	Sep 13, 1966
ANNUAL SEVEN-DAY MINIMUM	298	Oct 7	155	Sep 7	93	Sep 8, 1966
MAXIMUM PEAK FLOW			unknown		8,660	Jun 15, 1981
MAXIMUM PEAK STAGE			unknown		15.22	Aug 20, 1990
ANNUAL RUNOFF (CFSM)	1.03		1.11		1.02	
ANNUAL RUNOFF (INCHES)	14.04		15.03		13.91	
10 PERCENT EXCEEDS	1,860		2,230		1,860	
50 PERCENT EXCEEDS	634		546		608	
90 PERCENT EXCEEDS	333		197		219	

e Estimated



## 03331753 TIPPECANOE RIVER AT WINAMAC, IN

LOCATION.--Lat 41°02'59", long 86°35'57", in SW $\frac{1}{4}$ NW $\frac{1}{4}$  sec.13, T.30 N., R.R W., Pulaski County, Hydrologic Unit 05120106, (WINAMAC, IN quadrangle), on the northeast corner of the Washington Street bridge in Winamac, 0.3 mi downstream of the city park, 2 mi north of U.S. Highway 35 bridge, and at mile 70.3.

DRAINAGE AREA.--942 mi<sup>2</sup>.

PERIOD OF RECORD.--August 2001 to current year.

GAGE.--Water-stage recorder. Datum of gage is 674.19 ft above National Geodetic Vertical Datum of 1929.

REMARKS.--Records fair except for estimated daily discharges, which are poor.

DISCHARGE, CUBIC FEET PER SECOND  
WATER YEAR OCTOBER 2004 TO SEPTEMBER 2005  
DAILY MEAN VALUES

DAY	OCT	NOV	DEC	JAN	FEB	MAR	APR	MAY	JUN	JUL	AUG	SEP
1	375	492	e2,280	1,230	e1,550	e2,270	1,270	685	481	385	311	195
2	380	527	e2,310	1,330	e1,480	2,200	1,220	686	473	357	283	191
3	369	570	e2,420	1,480	e1,430	2,090	1,180	677	480	334	262	187
4	360	629	e2,470	1,910	e1,380	1,990	1,140	654	477	322	e256	184
5	357	925	e2,260	2,410	1,360	1,930	1,110	639	458	311	e260	183
6	350	1,100	e2,080	2,830	1,330	1,920	1,080	639	462	299	e246	179
7	346	1,030	e2,090	e2,980	1,390	2,020	1,060	621	454	287	235	175
8	346	947	e2,200	e2,960	1,740	2,040	1,050	607	442	273	226	174
9	349	858	e2,460	e2,770	2,140	1,990	1,020	592	461	273	217	175
10	344	e767	e2,740	e2,560	2,310	1,910	980	579	468	268	213	172
11	340	e698	e2,680	e2,460	2,270	1,840	932	557	442	258	223	173
12	343	e653	e2,450	2,770	2,150	1,770	911	546	416	252	255	171
13	350	e624	e2,280	e3,410	2,100	1,700	890	538	446	251	284	171
14	372	e590	e2,120	e4,660	2,490	1,610	847	550	507	274	297	193
15	388	e580	e1,990	e5,910	2,950	1,540	808	640	574	e265	347	189
16	372	e572	e1,820	6,270	4,000	1,480	785	671	579	265	361	214
17	358	e563	e1,690	e5,640	4,510	1,450	754	717	544	297	336	e225
18	358	e559	1,590	e4,980	4,430	1,430	729	722	495	e292	305	e220
19	363	e619	1,510	e4,360	e4,110	1,420	713	734	440	e306	285	e223
20	379	e749	1,430	e3,830	e3,700	1,400	703	745	411	e329	267	e215
21	382	e814	1,340	e3,380	e3,350	1,390	703	724	389	347	253	e208
22	378	e783	1,260	e3,070	e3,170	1,360	734	671	374	403	241	e208
23	392	e740	1,220	e2,830	e3,180	1,330	775	646	355	480	233	e212
24	408	e753	e1,080	e2,620	e3,060	1,300	805	641	338	476	230	e215
25	406	e995	e856	e2,390	e2,890	1,300	813	623	338	426	e223	e222
26	402	e1,440	e900	e2,240	e2,710	1,340	809	598	333	e384	e228	e277
27	401	e1,600	e898	e2,080	e2,560	1,410	795	557	321	e393	e228	e299
28	404	e1,810	e894	e2,000	e2,380	1,410	763	512	307	429	e223	e298
29	426	e2,040	e912	e1,880	---	1,380	727	491	381	408	201	e301
30	444	e2,220	e954	e1,790	---	1,330	706	481	434	365	196	e303
31	467	---	e1,050	e1,670	---	1,300	---	487	---	336	196	---
TOTAL	11,709	27,247	54,234	92,700	72,120	50,850	26,812	19,230	13,080	10,345	7,921	6,352
MEAN	378	908	1,749	2,990	2,576	1,640	894	620	436	334	256	212
MAX	467	2,220	2,740	6,270	4,510	2,270	1,270	745	579	480	361	303
MIN	340	492	856	1,230	1,330	1,300	703	481	307	251	196	171
CFSM	0.40	0.96	1.86	3.17	2.73	1.74	0.95	0.66	0.46	0.35	0.27	0.22
IN.	0.46	1.08	2.14	3.66	2.85	2.01	1.06	0.76	0.52	0.41	0.31	0.25

## STATISTICS OF MONTHLY MEAN DATA FOR WATER YEARS 2001 - 2005, BY WATER YEAR (WY)

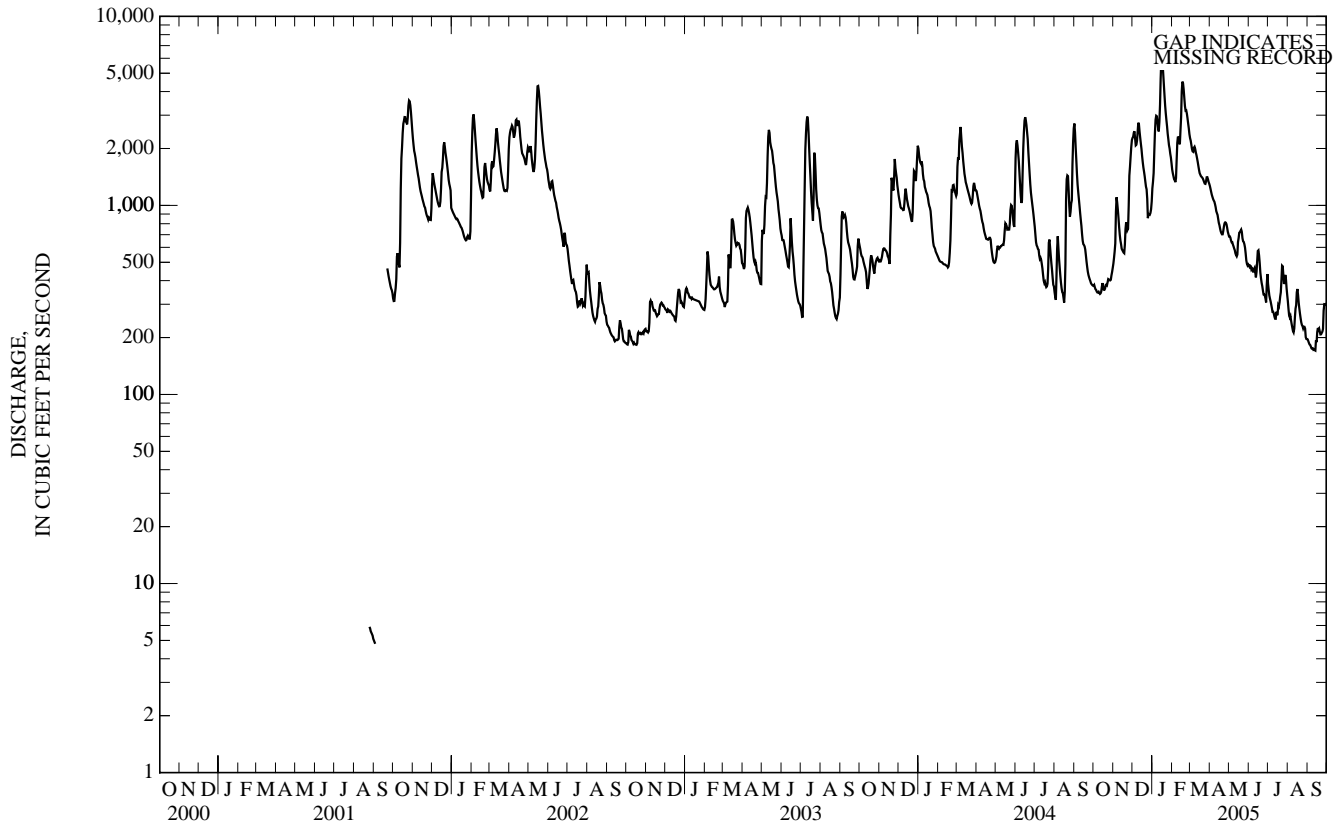
	2001	2002	2003	2004	2005	2001	2002	2003	2004	2005		
MEAN	730	826	1,143	1,301	1,335	1,321	1,132	1,261	908	636	456	482
MAX	1,853	1,250	1,749	2,990	2,576	1,640	2,273	2,334	1,731	1,331	818	879
(WY)	(2002)	(2002)	(2005)	(2005)	(2005)	(2005)	(2002)	(2002)	(2004)	(2003)	(2004)	(2004)
MIN	201	274	288	318	386	537	608	620	436	334	256	208
(WY)	(2003)	(2003)	(2003)	(2003)	(2003)	(2003)	(2003)	(2005)	(2005)	(2005)	(2005)	(2002)

## SUMMARY STATISTICS

	FOR 2004 CALENDAR YEAR	FOR 2005 WATER YEAR	WATER YEARS 2001 - 2005
ANNUAL TOTAL	358,911	392,600	
ANNUAL MEAN	981	1,076	960
HIGHEST ANNUAL MEAN			1,252
LOWEST ANNUAL MEAN			576
HIGHEST DAILY MEAN	2,930	Jun 16	6,270
LOWEST DAILY MEAN	306	Aug 16	4.8
ANNUAL SEVEN-DAY MINIMUM	345	Oct 6	5.1
MAXIMUM PEAK FLOW			6,370
MAXIMUM PEAK STAGE			13.47
ANNUAL RUNOFF (CFSM)	1.04		1.14
ANNUAL RUNOFF (INCHES)	14.17		15.50
10 PERCENT EXCEEDS	2,020		2,090
50 PERCENT EXCEEDS	770		659
90 PERCENT EXCEEDS	381		267

e Estimated

03331753 TIPPECANOE RIVER AT WINAMAC, IN—Continued





## 03333050 TIPPECANOE RIVER NEAR DELPHI, IN

LOCATION.--Lat 40°35'38", long 86°46'12", in SW<sup>1</sup>/<sub>4</sub>SW<sup>1</sup>/<sub>4</sub> sec.21, T.25 N., R.3 W., Carroll County, Hydrologic Unit 05120106, (BROOKSTON, IN quadrangle), on left bank 20 ft upstream from bridge on State Highway 18, 1,400 ft east of Springboro, 5 mi west of Delphi, 8.1 mi downstream from Big Creek, and at mile 8.7.

DRAINAGE AREA.--1,869 mi<sup>2</sup>.

PERIOD OF RECORD.--March to December 1903, March to December 1904, March 1905 to July 1906, November and December 1908, July 1939 to September 1987, October 1987 to current year. Published as "at Springboro" 1903-08. Published as "03333000 Tippecanoe River near Delphi:" July 1939 to September 1987.

REVISED RECORDS.--WSP 973: 1942. WSP 1335: 1905-6. WSP 2109: Drainage area. WDR IN-92-1: 1988-1991 (above 5900 ft<sup>3</sup>/s). WDR-IN-94-1: 1991 (maximum discharge).

GAGE.--Water-stage recorder. Datum of gage is 535.00 ft above National Geodetic Vertical Datum of 1929. Mar. 14, 1903 to July 20, 1906, and Nov. 2 to Dec. 31, 1908, nonrecording gage at present site at different datum. July 1939 to Sept. 30, 1987, at site 6.4 mi upstream at datum 17.01 ft higher.

REMARKS.--Records good except for estimated daily discharges, which are poor. Flow regulated by upstream reservoirs.

DISCHARGE, CUBIC FEET PER SECOND  
WATER YEAR OCTOBER 2004 TO SEPTEMBER 2005  
DAILY MEAN VALUES

DAY	OCT	NOV	DEC	JAN	FEB	MAR	APR	MAY	JUN	JUL	AUG	SEP
1	965	1,090	6,900	2,200	2,740	4,100	2,090	1,320	889	754	455	276
2	805	1,770	6,920	2,650	2,500	3,730	2,240	1,400	787	498	439	269
3	637	2,330	5,470	3,460	2,420	3,510	1,950	1,220	845	557	430	280
4	783	2,130	5,000	6,970	2,320	3,400	2,000	1,220	885	481	441	287
5	872	2,930	4,650	7,450	2,320	3,390	1,960	1,050	919	625	439	273
6	562	2,570	4,140	8,040	2,440	3,240	1,920	1,150	908	459	441	277
7	886	2,540	5,690	6,260	3,340	3,390	1,710	1,230	857	439	432	268
8	600	1,960	7,440	5,660	5,300	3,330	1,830	1,190	821	438	297	271
9	845	2,000	6,110	4,780	5,390	3,200	1,570	1,080	935	435	319	263
10	708	1,540	5,390	4,830	4,700	3,040	1,810	1,210	715	347	439	267
11	622	1,720	5,140	5,820	4,350	3,150	1,590	1,000	729	432	479	264
12	624	1,520	4,840	11,200	4,160	2,950	1,530	1,050	905	360	641	262
13	1,150	1,080	4,400	14,800	4,380	2,840	1,780	999	1,070	295	630	262
14	548	1,460	3,870	15,800	9,100	2,600	1,530	1,140	1,630	434	627	266
15	978	981	3,570	11,900	9,170	2,650	1,420	1,080	1,200	614	883	271
16	606	1,270	3,190	10,600	8,550	2,640	1,310	1,070	1,260	384	626	418
17	625	1,280	3,330	9,000	8,310	2,420	1,420	1,190	962	488	603	301
18	1,000	1,160	2,750	7,340	7,440	2,290	1,450	1,210	869	622	521	293
19	947	1,430	2,850	6,800	6,570	2,400	1,220	1,380	874	610	483	615
20	925	1,530	2,530	5,820	6,080	2,370	1,170	1,410	744	438	605	391
21	826	1,670	2,500	5,280	6,260	2,220	1,530	1,150	808	597	449	333
22	1,030	1,760	2,450	4,790	6,070	2,270	1,640	1,220	723	997	424	429
23	1,030	1,690	1,970	4,160	5,560	2,280	1,630	1,080	554	1,070	306	432
24	988	2,070	1,660	4,160	5,170	2,240	1,750	1,080	729	758	276	455
25	1,010	4,440	e1,550	3,920	5,020	2,290	1,720	1,070	367	748	367	362
26	e989	4,150	e1,650	3,730	4,440	2,500	1,830	1,060	631	643	432	936
27	931	5,030	1,730	3,540	4,360	2,690	1,490	1,040	623	892	424	988
28	972	6,990	1,510	3,140	4,190	2,700	1,530	873	640	636	290	732
29	1,100	5,810	2,130	3,010	---	2,370	1,460	633	623	779	272	1,040
30	1,240	5,390	2,150	3,070	---	2,520	1,460	941	932	858	273	891
31	1,120	---	2,730	2,810	---	2,270	---	743	---	546	277	---
TOTAL	26,924	73,291	116,210	192,990	142,650	86,990	49,540	34,489	25,434	18,234	14,020	12,672
MEAN	869	2,443	3,749	6,225	5,095	2,806	1,651	1,113	848	588	452	422
MAX	1,240	6,990	7,440	15,800	9,170	4,100	2,240	1,410	1,630	1,070	883	1,040
MIN	548	981	1,510	2,200	2,320	2,220	1,170	633	367	295	272	262
CFSM	0.46	1.31	2.01	3.33	2.73	1.50	0.88	0.60	0.45	0.31	0.24	0.23
IN.	0.54	1.46	2.31	3.84	2.84	1.73	0.99	0.69	0.51	0.36	0.28	0.25

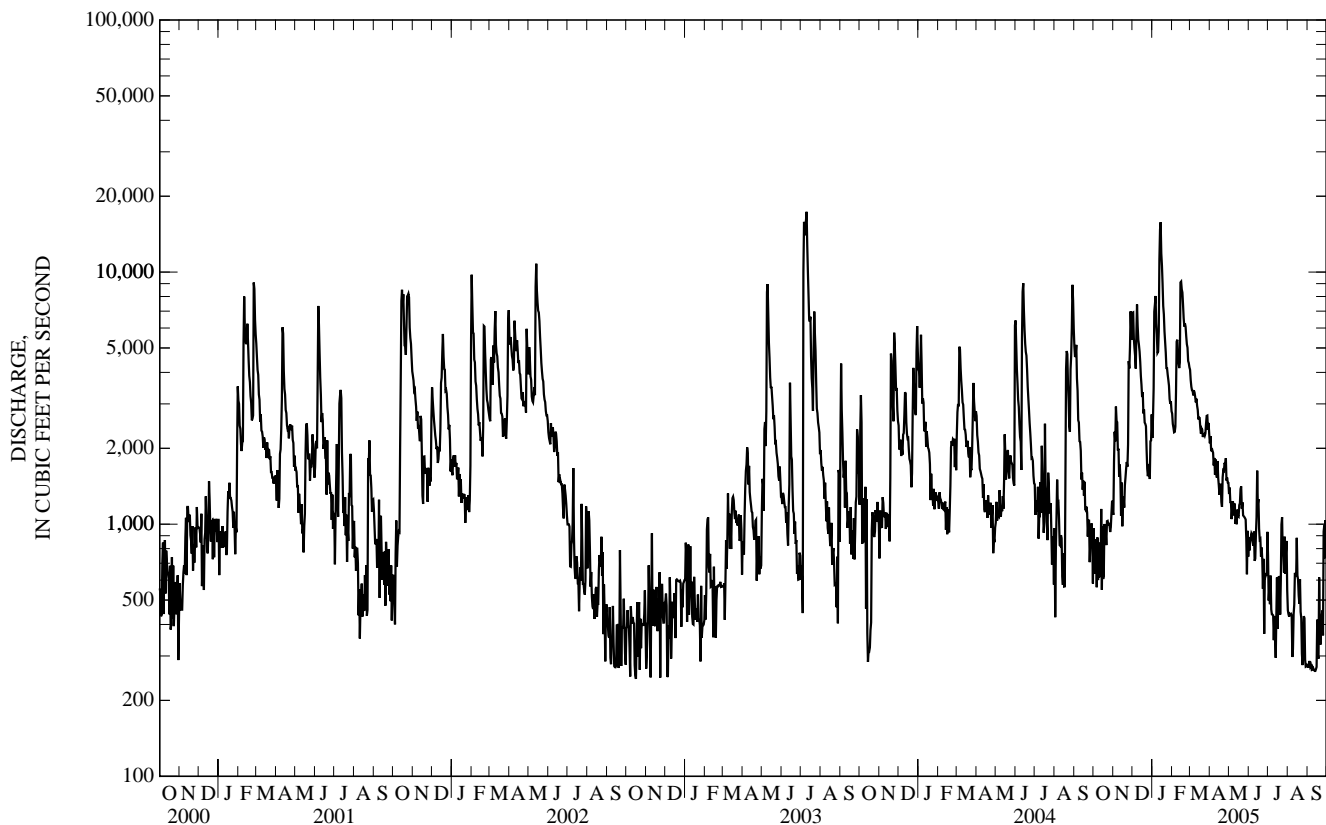
## STATISTICS OF MONTHLY MEAN DATA FOR WATER YEARS 1988 - 2005, BY WATER YEAR (WY)

MEAN	1,247	1,588	1,968	2,628	2,561	2,890	2,856	2,380	2,230	1,849	1,191	1,049
MAX	4,215	4,120	3,819	6,854	5,095	5,184	4,958	4,610	4,324	6,326	4,849	3,092
(WY)	(2002)	(1993)	(1991)	(1993)	(2005)	(1998)	(1994)	(2002)	(1997)	(2003)	(1990)	(1993)
MIN	369	453	490	505	605	811	1,096	983	493	360	308	325
(WY)	(1996)	(2000)	(2003)	(2003)	(2003)	(1996)	(2003)	(1988)	(1988)	(1988)	(1988)	(1999)

03333050 TIPPECANOE RIVER NEAR DELPHI, IN—Continued

SUMMARY STATISTICS	FOR 2004 CALENDAR YEAR		FOR 2005 WATER YEAR		WATER YEARS 1988 - 2005	
ANNUAL TOTAL	793,638		793,444			
ANNUAL MEAN	2,168		2,174		2,034	
HIGHEST ANNUAL MEAN					3,046	
LOWEST ANNUAL MEAN					954	
HIGHEST DAILY MEAN	9,040	Jun 13	15,800	Jan 14	18,400	Dec 30, 1990
LOWEST DAILY MEAN	427	Aug 2	262	Sep 12	131	Aug 5, 1988
ANNUAL SEVEN-DAY MINIMUM	692	Oct 6	265	Sep 8	255	Aug 2, 1988
MAXIMUM PEAK FLOW			17,400		20,600	
MAXIMUM PEAK STAGE			12.33		13.72	
ANNUAL RUNOFF (CFSM)	1.16		1.16		1.09	
ANNUAL RUNOFF (INCHES)	15.80		15.79		14.78	
10 PERCENT EXCEEDS	4,680		5,340		4,340	
50 PERCENT EXCEEDS	1,580		1,230		1,440	
90 PERCENT EXCEEDS	884		424		461	

e Estimated



## WABASH RIVER BASIN

03333450 WILDCAT CREEK NEAR JEROME, IN

LOCATION.--Lat 40°26'29", long 85°55'08", in NE $\frac{1}{4}$ SE $\frac{1}{4}$  sec.14, T.23 N., R.5 E., Howard County, Hydrologic Unit 05120107, (GREENTOWN, IN quadrangle), on right bank at downstream side of bridge on County Road 1100 East, 0.5 mi downstream from Mud Creek, 1.5 mi southeast of Jerome, and at mile 79.9.

DRAINAGE AREA.--146 mi<sup>2</sup>.

PERIOD OF RECORD.--July 1961 to current year.

REVISED RECORDS.--WSP 2109: Drainage area.

GAGE.--Water-stage recorder. Datum of gage is 820.04 ft above National Geodetic Vertical Datum of 1929.

REMARKS.--Records fair except for estimated daily discharges, which are poor.

EXTREMES OUTSIDE PERIOD OF RECORD.--Flood in March 1913 reached a stage of about 18 ft, from information by local residents.

DISCHARGE, CUBIC FEET PER SECOND  
WATER YEAR OCTOBER 2004 TO SEPTEMBER 2005  
DAILY MEAN VALUES

DAY	OCT	NOV	DEC	JAN	FEB	MAR	APR	MAY	JUN	JUL	AUG	SEP
1	2.6	29	646	566	e42	147	72	256	28	25	6.6	5.2
2	2.9	29	619	642	e38	107	74	203	30	21	5.7	4.6
3	3.2	56	389	1,490	e36	93	68	164	34	18	5.3	4.3
4	3.4	56	263	2,960	e33	94	57	131	33	16	5.0	3.9
5	4.4	46	184	2,920	e32	107	53	111	30	14	8.5	3.8
6	3.0	35	150	3,930	e58	102	51	105	33	12	8.2	4.0
7	2.9	29	493	2,260	456	120	56	103	30	11	6.7	3.6
8	2.9	23	1,140	1,280	1,570	107	60	94	28	9.7	5.4	3.9
9	3.4	18	728	898	1,320	75	49	87	25	8.6	4.7	3.6
10	3.6	15	496	750	918	70	47	87	23	7.8	4.5	3.7
11	3.6	16	412	1,370	633	79	44	77	23	7.4	15	3.6
12	4.0	16	374	5,560	493	72	44	72	26	7.2	13	3.3
13	7.0	15	287	4,540	724	57	48	69	432	7.7	22	3.2
14	12	13	182	3,610	1,510	45	37	88	416	7.8	10	3.3
15	16	12	132	1,820	1,430	41	31	92	218	8.2	10	3.6
16	17	12	113	1,060	1,120	39	29	70	126	8.3	11	5.1
17	14	13	92	673	921	41	29	56	83	8.8	9.0	6.0
18	13	15	78	e430	543	43	31	50	62	8.5	7.9	6.0
19	35	16	68	e320	368	42	32	58	48	9.4	7.0	6.3
20	41	19	e46	e230	303	41	38	101	40	7.8	6.3	6.9
21	26	19	e42	e180	393	34	418	90	36	7.0	6.1	6.1
22	17	16	e38	e140	377	32	596	71	32	18	5.5	5.9
23	15	16	e35	e120	295	37	1,590	72	28	18	5.1	7.8
24	15	41	e32	e100	251	37	1,350	61	26	16	5.3	9.7
25	13	611	e30	e88	209	45	797	47	25	13	4.8	11
26	13	500	e28	e78	171	222	591	42	109	9.6	4.9	29
27	13	328	e27	e68	140	205	816	40	63	16	5.0	15
28	18	469	e26	e62	155	166	570	39	42	16	4.6	8.5
29	20	390	e28	e55	---	120	412	36	33	11	4.2	12
30	24	312	e36	e49	---	94	327	33	28	9.0	4.4	15
31	30	---	555	e45	---	95	---	31	---	7.7	5.3	---
TOTAL	398.9	3,185	7,769	38,294	14,539	2,609	8,417	2,636	2,190	365.5	227.0	207.9
MEAN	12.9	106	251	1,235	519	84.2	281	85.0	73.0	11.8	7.32	6.93
MAX	41	611	1,140	5,560	1,570	222	1,590	256	432	25	22	29
MIN	2.6	12	26	45	32	32	29	31	23	7.0	4.2	3.2
CFSM	0.09	0.73	1.72	8.46	3.56	0.58	1.92	0.58	0.50	0.08	0.05	0.05
IN.	0.10	0.81	1.98	9.76	3.70	0.66	2.14	0.67	0.56	0.09	0.06	0.05

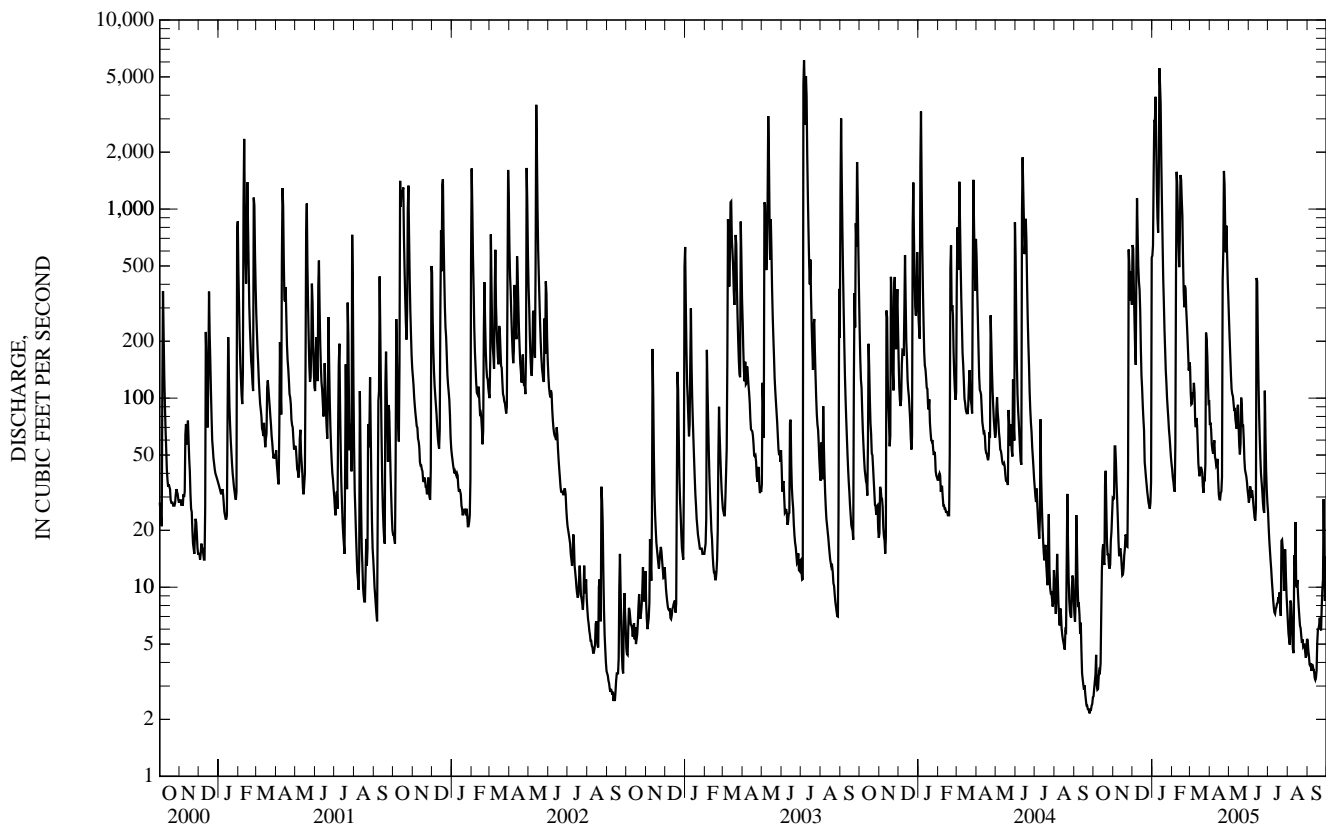
STATISTICS OF MONTHLY MEAN DATA FOR WATER YEARS 1962 - 2005, BY WATER YEAR (WY)

MEAN	49.9	109	160	183	209	275	222	165	140	117	40.3	51.3
MAX	481	834	622	1,235	649	793	689	487	720	1,114	401	589
(WY)	(2002)	(1993)	(1991)	(2005)	(1976)	(1982)	(1964)	(2003)	(1998)	(2003)	(1998)	(1989)
MIN	1.72	1.53	2.32	1.02	11.2	31.5	16.5	17.9	8.20	7.00	2.86	0.88
(WY)	(1967)	(2000)	(2000)	(1977)	(1963)	(2000)	(2000)	(1976)	(1988)	(1994)	(1999)	(1999)

03333450 WILDCAT CREEK NEAR JEROME, IN—Continued

SUMMARY STATISTICS	FOR 2004 CALENDAR YEAR		FOR 2005 WATER YEAR		WATER YEARS 1962 - 2005	
ANNUAL TOTAL	54,428.2		80,838.3		143	
ANNUAL MEAN	149		221		253	
HIGHEST ANNUAL MEAN					37.7	
LOWEST ANNUAL MEAN					1993	
HIGHEST DAILY MEAN	3,280	Jan 5	5,560	Jan 12	6,300	Jun 12, 1998
LOWEST DAILY MEAN	2.2	Sep 24	2.6	Oct 1	0.47	Sep 27, 1999
ANNUAL SEVEN-DAY MINIMUM	2.3	Sep 21	3.2	Oct 1	0.52	Sep 22, 1999
MAXIMUM PEAK FLOW			6,330	Jan 12	7,160	Jul 6, 2003
MAXIMUM PEAK STAGE			13.64	Jan 12	14.35	Jul 6, 2003
ANNUAL RUNOFF (CF5M)	1.02		1.52		0.980	
ANNUAL RUNOFF (INCHES)	13.87		20.60		13.32	
10 PERCENT EXCEEDS	471		578		349	
50 PERCENT EXCEEDS	44		37		45	
90 PERCENT EXCEEDS	5.7		5.1		4.9	

e Estimated



## 03333600 KOKOMO CREEK NEAR KOKOMO, IN

LOCATION.--Lat 40°26'28", long 86°05'20", in NW<sup>1</sup>/<sub>4</sub>SW<sup>1</sup>/<sub>4</sub> sec.16, T.23 N., R.4 E., Howard County, Hydrologic Unit 05120107,(KOKOMO EAST, IN quadrangle), on left bank at upstream side of bridge on County Road 200 East, 0.5 mi south of County Road 200 South, 2.6 mi southeast of intersection of U.S. Highways 31 and 35 in Kokomo, and 4.2 mi upstream from mouth.

DRAINAGE AREA.--24.7 mi<sup>2</sup>.

PERIOD OF RECORD.--July 1959 to current year.

REVISED RECORDS.--WSP 2109: Drainage area. WDR IN-72-1: 1970-71(P).

GAGE.--Water-stage recorder. Datum of gage is 807.68 ft above National Geodetic Vertical Datum of 1929.

REMARKS.--Records good except for estimated daily discharges and those below 1 ft<sup>3</sup>/s, which are poor.

DISCHARGE, CUBIC FEET PER SECOND  
WATER YEAR OCTOBER 2004 TO SEPTEMBER 2005  
DAILY MEAN VALUES

DAY	OCT	NOV	DEC	JAN	FEB	MAR	APR	MAY	JUN	JUL	AUG	SEP
1	e0.47	4.0	147	80	e9.3	21	13	29	4.4	5.0	1.6	e0.50
2	e0.48	4.5	118	83	e9.0	17	13	24	4.9	4.2	1.4	e0.41
3	e0.50	6.8	77	201	e8.8	16	12	21	5.9	3.7	1.4	e0.37
4	e0.60	6.1	53	296	e8.6	17	11	18	5.6	3.3	1.3	e0.32
5	e0.90	4.3	40	e420	e8.8	18	11	16	5.7	3.3	1.7	e0.30
6	e0.70	3.4	37	e470	e13	17	10	15	12	3.0	1.5	e0.29
7	e0.60	3.0	131	e330	97	19	10	15	7.3	2.6	1.8	e0.28
8	e0.60	2.1	174	e200	203	16	10	13	5.9	2.3	1.5	e0.28
9	e0.76	1.7	123	e140	160	14	9.2	13	5.4	2.1	1.3	e0.27
10	e0.70	1.6	88	120	126	14	8.9	12	4.8	1.9	1.2	e0.27
11	e0.80	1.7	77	272	94	14	8.6	11	4.6	1.9	1.8	e0.26
12	e0.90	1.7	67	883	74	13	8.8	9.8	5.7	2.1	3.1	e0.26
13	e1.0	1.5	48	621	117	11	8.8	9.8	42	2.0	5.0	e0.25
14	e1.4	1.2	34	445	219	10	7.7	12	29	1.9	3.6	e0.25
15	e2.1	1.1	28	174	156	9.8	7.1	10	17	4.1	2.9	e0.36
16	e3.9	1.2	25	133	146	9.5	6.9	8.8	12	3.3	2.4	e0.60
17	e3.7	1.3	21	107	118	9.9	7.0	8.3	9.1	3.3	e2.2	e0.40
18	e5.9	1.4	20	70	70	9.7	7.1	7.8	7.7	2.4	e1.9	e0.30
19	e9.3	1.3	17	54	48	9.9	7.1	8.6	6.6	2.2	e1.7	e0.30
20	6.6	1.2	e14	40	42	9.3	8.8	9.4	5.8	1.7	e1.5	e0.50
21	3.7	1.0	e12	31	56	8.5	28	7.3	5.4	2.3	e1.2	e0.40
22	2.4	0.91	e11	28	50	8.5	49	6.9	5.0	8.0	e1.0	e0.40
23	1.9	0.89	e10	e19	39	9.6	137	7.3	4.3	3.9	e0.90	e1.0
24	1.9	9.8	e9.0	e18	35	8.8	119	6.5	3.9	2.6	e0.80	e0.80
25	1.7	89	e8.8	19	29	12	76	5.9	14	2.1	e0.70	e3.2
26	1.4	44	e8.6	18	24	25	59	5.6	37	2.3	e0.60	e13
27	1.7	33	e8.4	e12	22	22	107	5.5	13	11	e0.50	e2.0
28	2.2	84	e8.3	e11	23	20	65	5.4	8.9	5.2	e0.44	e1.0
29	3.0	54	e8.2	e10	---	16	46	5.2	7.1	3.4	e0.36	e9.0
30	6.0	65	e13	e9.7	---	14	37	4.8	5.8	2.5	0.31	5.5
31	5.6	---	100	e9.5	---	15	---	4.5	---	1.9	e0.50	---
TOTAL	73.41	432.70	1,536.3	5,324.2	2,005.5	434.5	909.0	336.4	305.8	101.5	48.11	43.07
MEAN	2.37	14.4	49.6	172	71.6	14.0	30.3	10.9	10.2	3.27	1.55	1.44
MAX	9.3	89	174	883	219	25	137	29	42	11	5.0	13
MIN	0.47	0.89	8.2	9.5	8.6	8.5	6.9	4.5	3.9	1.7	0.31	0.25
CFSM	0.10	0.58	2.01	6.95	2.90	0.57	1.23	0.44	0.41	0.13	0.06	0.06
IN.	0.11	0.65	2.31	8.02	3.02	0.65	1.37	0.51	0.46	0.15	0.07	0.06

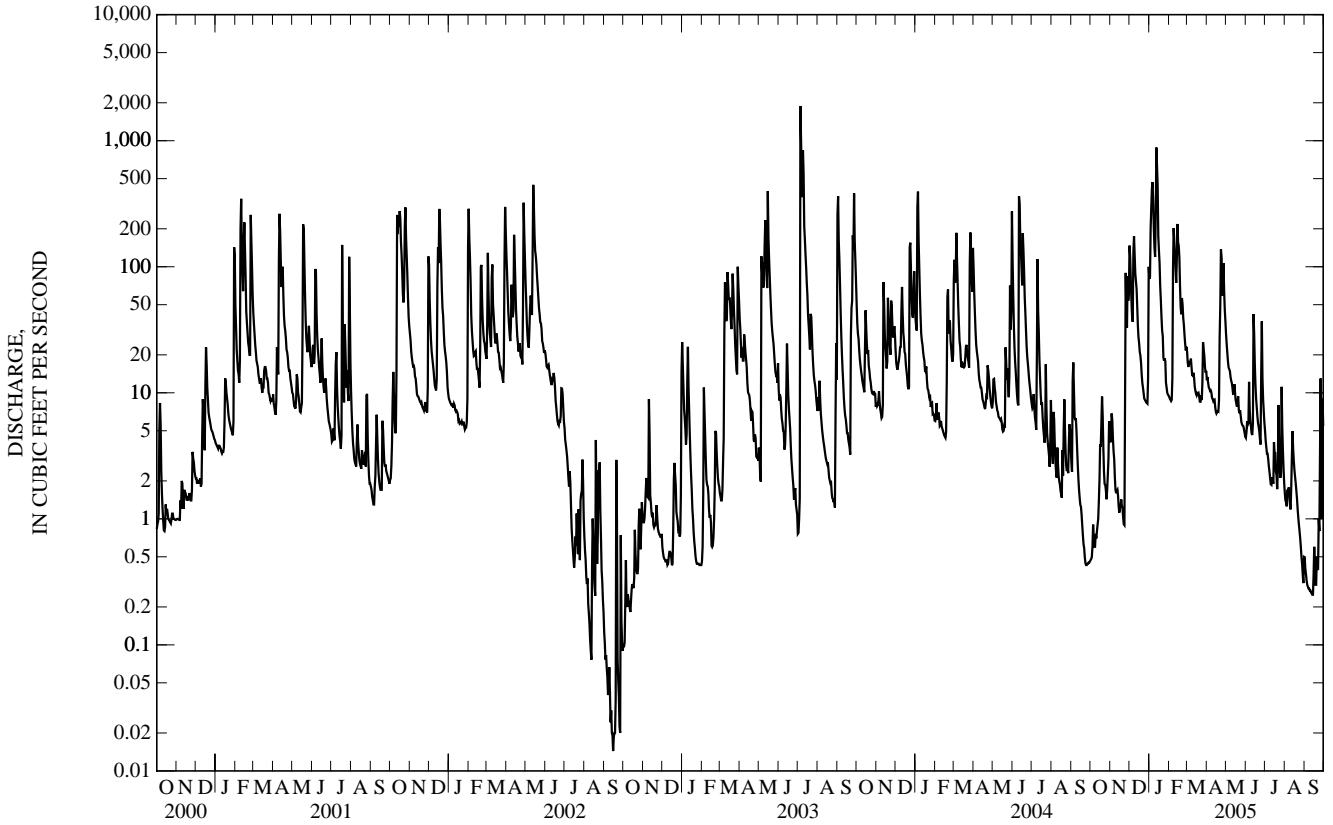
STATISTICS OF MONTHLY MEAN DATA FOR WATER YEARS 1960 - 2005, BY WATER YEAR (WY)

MEAN	10.7	18.6	25.5	28.1	34.7	46.7	39.7	27.5	20.3	18.4	6.95	7.47
MAX	98.6	144	102	172	129	150	117	87.2	99.7	201	58.5	77.3
(WY)	(2002)	(1993)	(1991)	(2005)	(1990)	(1982)	(1964)	(1996)	(1980)	(2003)	(1998)	(2003)
MIN	0.44	0.55	0.44	0.33	1.98	4.21	2.02	2.52	1.20	1.07	0.50	0.16
(WY)	(2003)	(2000)	(1977)	(1977)	(1964)	(2000)	(2000)	(1976)	(1988)	(1988)	(1988)	(1991)

03333600 KOKOMO CREEK NEAR KOKOMO, IN—Continued

SUMMARY STATISTICS	FOR 2004 CALENDAR YEAR		FOR 2005 WATER YEAR		WATER YEARS 1960 - 2005	
ANNUAL TOTAL	9,689.40		11,550.49			
ANNUAL MEAN	26.5		31.6		23.7	
HIGHEST ANNUAL MEAN					45.2	1993
LOWEST ANNUAL MEAN					6.51	2000
HIGHEST DAILY MEAN	395	Jan 5	883	Jan 12	1,890	Jul 5, 2003
LOWEST DAILY MEAN	0.43	Sep 24	0.25	Sep 13	0.01	Sep 15, 2002
ANNUAL SEVEN-DAY MINIMUM	0.44	Sep 23	0.26	Sep 8	0.02	Sep 11, 2002
MAXIMUM PEAK FLOW			1,080	Jan 12	2,950	Jul 5, 2003
MAXIMUM PEAK STAGE			9.26	Jan 12	11.85	Jul 5, 2003
ANNUAL RUNOFF (CF5M)	1.07		1.28		0.958	
ANNUAL RUNOFF (INCHES)	14.59		17.40		13.01	
10 PERCENT EXCEEDS	77		86		55	
50 PERCENT EXCEEDS	8.4		8.3		7.5	
90 PERCENT EXCEEDS	1.3		0.70		0.84	

e Estimated



## 03333700 WILDCAT CREEK AT KOKOMO, IN

LOCATION.--Lat 40°28'24", long 86°09'25", in SW<sup>1</sup>/<sub>4</sub>NE<sup>1</sup>/<sub>4</sub> sec.2, T.23 N., R.3 E., Howard County, Hydrologic Unit 05120107, (KOKOMO WEST, IN quadrangle), on right bank on property of Kokomo Sewage Treatment Plant in Kokomo, 250 ft downstream from Kokomo Creek, 1.0 mi upstream from Dixon Road bridge, and at mile 62.9.

DRAINAGE AREA.--242 mi<sup>2</sup>.

PERIOD OF RECORD.--October 1955 to current year.

REVISED RECORDS.--WSP 2109: Drainage area. WDR-IN-83: 1980, 1981(P), 1982. WDR-IN-88: 1986(P), 1987 (M).

GAGE.--Water-stage recorder. Datum of gage is 775.62 ft above National Geodetic Vertical Datum of 1929 (levels by State of Indiana, Department of Natural Resources). Prior to May 9, 1986, recording gage at site 0.4 mi downstream at present datum.

REMARKS.--Records good. Some regulation by Kokomo Reservoirs Nos. 1 and 2, (combined capacity 4,170 acre-ft, used for municipal water supply) and by Kokomo Sewage Treatment Plant.

DISCHARGE, CUBIC FEET PER SECOND  
WATER YEAR OCTOBER 2004 TO SEPTEMBER 2005  
DAILY MEAN VALUES

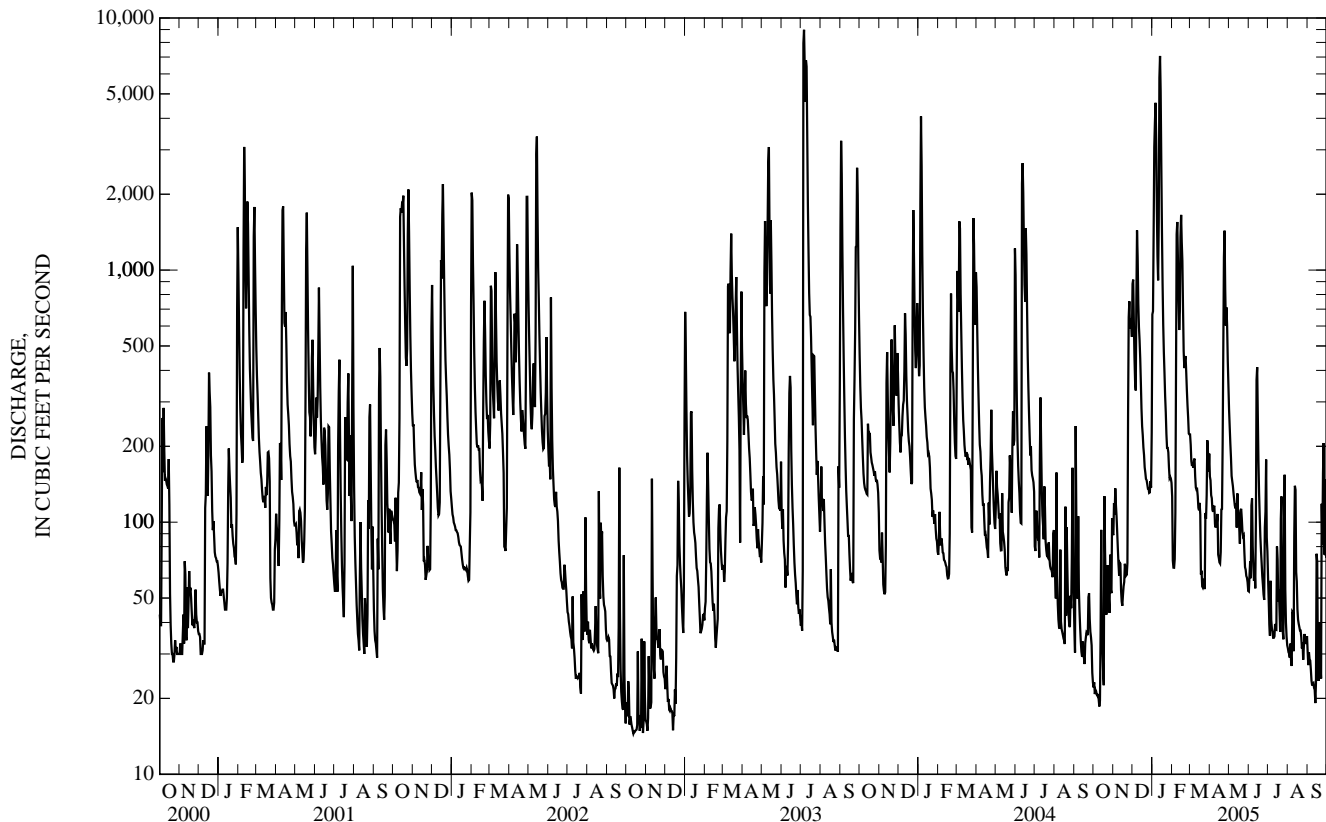
DAY	OCT	NOV	DEC	JAN	FEB	MAR	APR	MAY	JUN	JUL	AUG	SEP
1	22	89	882	667	126	223	152	280	53	61	32	31
2	23	119	916	686	70	203	147	240	62	49	30	27
3	21	107	630	1,410	66	175	128	206	70	40	30	30
4	22	136	453	3,080	66	167	124	180	60	35	29	29
5	21	117	360	3,860	71	172	112	153	117	59	33	28
6	21	105	333	4,610	109	164	110	145	124	41	28	26
7	20	91	780	3,300	384	176	115	139	80	38	27	23
8	21	78	1,440	1,770	1,390	179	116	130	67	37	44	22
9	20	68	1,120	1,130	1,550	151	98	123	59	35	44	23
10	19	61	738	911	1,100	137	95	116	65	35	31	23
11	20	69	595	1,560	761	135	100	113	55	35	88	22
12	36	68	526	5,790	578	135	100	119	102	39	139	22
13	93	54	446	7,070	685	127	108	95	367	37	134	19
14	37	48	356	5,130	1,350	114	74	130	412	37	63	23
15	32	47	283	2,680	1,660	111	72	112	267	80	58	75
16	26	51	240	1,420	1,290	119	69	105	174	71	45	69
17	23	56	222	888	1,090	107	69	94	131	48	41	28
18	127	58	198	608	703	62	76	82	106	54	40	23
19	77	68	185	471	477	64	112	111	88	44	38	33
20	56	64	165	391	409	56	113	113	77	37	37	40
21	43	61	157	317	442	55	205	103	69	103	37	27
22	49	62	148	273	456	56	475	91	61	127	35	24
23	68	69	147	224	393	60	1,130	88	56	47	32	118
24	57	263	142	197	334	54	1,430	89	52	37	33	82
25	49	649	136	197	291	109	837	76	49	34	28	157
26	44	752	136	189	260	103	603	66	95	81	32	206
27	74	584	131	165	225	128	711	65	110	154	36	75
28	54	645	131	149	223	211	600	61	177	54	34	75
29	52	615	145	151	---	190	436	60	87	40	33	148
30	104	543	137	149	---	158	349	58	77	35	34	72
31	90	---	226	143	---	187	---	53	---	33	35	---
TOTAL	1,421	5,797	12,504	49,586	16,559	4,088	8,866	3,596	3,369	1,657	1,380	1,600
MEAN	45.8	193	403	1,600	591	132	296	116	112	53.5	44.5	53.3
MAX	127	752	1,440	7,070	1,660	223	1,430	280	412	154	139	206
MIN	19	47	131	143	66	54	69	53	49	33	27	19
CFSM	0.19	0.80	1.67	6.61	2.44	0.54	1.22	0.48	0.46	0.22	0.18	0.22
IN.	0.22	0.89	1.92	7.62	2.55	0.63	1.36	0.55	0.52	0.25	0.21	0.25

STATISTICS OF MONTHLY MEAN DATA FOR WATER YEARS 1956 - 2005, BY WATER YEAR (WY)

	96.0	188	259	286	344	432	407	281	257	208	91.3	93.6
MEAN	96.0	188	259	286	344	432	407	281	257	208	91.3	93.6
MAX	752	1,387	968	1,600	1,097	1,376	1,117	835	1,432	1,743	602	879
(WY)	(2002)	(1993)	(1991)	(2005)	(1990)	(1982)	(1957)	(1996)	(1958)	(2003)	(1998)	(1989)
MIN	11.2	15.5	13.8	15.6	25.8	62.4	35.3	53.6	28.2	28.6	22.7	12.8
(WY)	(1957)	(1957)	(1964)	(2000)	(1964)	(2000)	(2000)	(1988)	(1988)	(1988)	(2000)	(1956)

03333700 WILDCAT CREEK AT KOKOMO, IN—Continued

SUMMARY STATISTICS	FOR 2004 CALENDAR YEAR		FOR 2005 WATER YEAR		WATER YEARS 1956 - 2005	
ANNUAL TOTAL	91,750		110,423			
ANNUAL MEAN	251		303		244	
HIGHEST ANNUAL MEAN					444 1993	
LOWEST ANNUAL MEAN					84.8 2000	
HIGHEST DAILY MEAN	4,070	Jan 5	7,070	Jan 13	8,980	Jul 6, 2003
LOWEST DAILY MEAN	19	Oct 10	19	Oct 10	7.2	Sep 30, 1956
ANNUAL SEVEN-DAY MINIMUM	20	Oct 5	20	Oct 5	8.3	Dec 28, 1963
MAXIMUM PEAK FLOW			7,420	Jan 13	9,500	Jul 5, 2003
MAXIMUM PEAK STAGE			15.79	Jan 13	17.75	Jul 5, 2003
ANNUAL RUNOFF (CFSM)	1.04		1.25		1.01	
ANNUAL RUNOFF (INCHES)	14.10		16.97		13.73	
10 PERCENT EXCEEDS	646		685		578	
50 PERCENT EXCEEDS	108		102		89	
90 PERCENT EXCEEDS	37		31		24	





## WABASH RIVER BASIN

## 03334000 WILDCAT CREEK AT OWASCO, IN

LOCATION.--Lat 40°27'50", long 86°38'15", in SE $\frac{1}{4}$ SE $\frac{1}{4}$  sec.4, T.23 N., R.2 W., Carroll County, Hydrologic Unit 05120107, (PYRMONT, IN quadrangle), on left bank 200 ft downstream from bridge on State Highway 39, 0.5 mi northwest of Owasco, 8.7 mi south of Delphi, and 15 mi upstream from South Fork Wildcat Creek.

DRAINAGE AREA.--396 mi<sup>2</sup>.

PERIOD OF RECORD.--October 1943 to September 1973. Annual maximum, water years 1975-81. October 1988 to current year. Prior to March 1944 monthly discharge only, published in WSP 1305.

REVISED RECORDS.--WSP 1625: 1958. WSP 2109: Drainage area. WDR 94-1: 1988-1993 (Peak of record).

GAGE.--Water-stage recorder. Datum of gage is 624.63 ft above National Geodetic Vertical Datum of 1929. Prior to Oct. 1, 1950, nonrecording gage at site 500 ft upstream at same datum.

REMARKS.--Records fair except for estimated daily discharges, which are poor. Some regulation at low stages for municipal water supply by Kokomo Water Company since 1955.

EXTREMES OUTSIDE PERIOD OF RECORD.--Flood of May 18, 1943, reached a stage of 14.00 ft, from floodmarks.

DISCHARGE, CUBIC FEET PER SECOND  
WATER YEAR OCTOBER 2004 TO SEPTEMBER 2005  
DAILY MEAN VALUES

DAY	OCT	NOV	DEC	JAN	FEB	MAR	APR	MAY	JUN	JUL	AUG	SEP
1	68	273	1,440	507	268	393	292	421	113	123	79	59
2	64	496	1,510	748	249	371	274	372	111	106	73	56
3	61	447	1,150	1,100	204	344	267	334	121	96	70	51
4	61	405	764	2,800	193	325	244	283	126	89	68	48
5	59	395	576	4,160	198	326	233	242	117	83	67	48
6	58	310	501	5,920	248	323	218	218	154	95	66	47
7	59	257	915	6,090	398	321	211	210	186	83	73	48
8	58	208	2,070	4,770	1,290	316	213	205	136	76	67	48
9	57	177	1,960	2,420	2,090	297	207	198	118	71	62	45
10	57	159	1,340	1,540	1,920	274	189	191	109	68	78	42
11	56	150	968	1,770	1,340	266	184	186	118	65	73	40
12	57	151	800	4,050	967	262	185	181	127	66	97	40
13	88	149	662	8,650	931	247	188	197	307	68	202	40
14	212	128	541	10,600	1,780	231	186	214	505	74	197	39
15	148	118	445	7,290	2,340	219	163	215	436	72	e110	41
16	121	120	384	4,010	2,430	216	153	193	316	79	e95	57
17	105	122	349	e1,890	1,960	222	150	180	233	100	e90	120
18	105	121	323	e1,310	1,370	213	147	170	192	e82	79	71
19	313	131	298	e930	900	178	148	171	165	e74	73	62
20	233	138	265	694	687	174	184	207	146	89	71	69
21	201	132	e240	588	723	160	e290	192	130	e154	67	73
22	183	124	e230	509	742	158	e496	177	120	e183	64	64
23	171	125	e220	e445	661	163	e780	164	110	e125	62	60
24	194	199	e215	e424	574	166	e1,550	157	104	e92	59	133
25	189	911	e210	e390	505	172	1,400	e153	97	e85	56	146
26	159	1,160	e205	374	454	265	e800	143	92	85	57	374
27	152	970	e200	346	413	263	e750	133	109	167	55	372
28	193	1,130	e200	e298	390	273	804	128	139	249	56	184
29	185	986	e210	e310	---	324	612	123	222	129	57	198
30	200	862	240	295	---	297	495	120	147	101	56	302
31	315	---	328	281	---	298	---	120	---	87	56	---
TOTAL	4,182	11,054	19,759	75,509	26,225	8,057	12,013	6,198	5,106	3,116	2,435	2,977
MEAN	135	368	637	2,436	937	260	400	200	170	101	78.5	99.2
MAX	315	1,160	2,070	10,600	2,430	393	1,550	421	505	249	202	374
MIN	56	118	200	281	193	158	147	120	92	65	55	39
CFSM	0.34	0.93	1.61	6.15	2.37	0.66	1.01	0.50	0.43	0.25	0.20	0.25
IN.	0.39	1.04	1.86	7.09	2.46	0.76	1.13	0.58	0.48	0.29	0.23	0.28

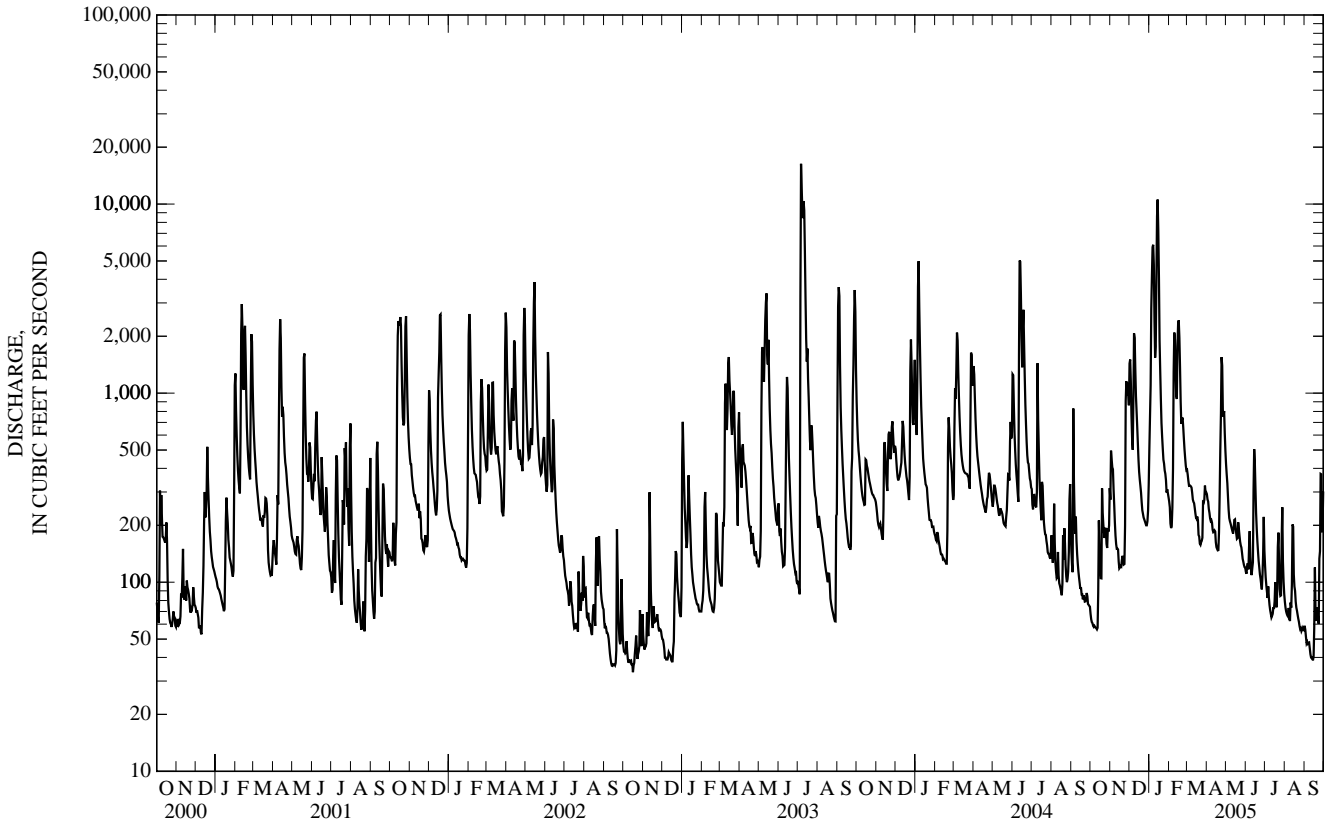
STATISTICS OF MONTHLY MEAN DATA FOR WATER YEARS 1945 - 2005, BY WATER YEAR (WY)

MEAN	165	259	340	567	519	617	664	461	417	353	141	151
MAX	1,011	2,024	1,325	3,083	1,725	1,301	1,857	1,108	2,536	2,948	707	1,339
(WY)	(2002)	(1993)	(1958)	(1950)	(1959)	(1997)	(1957)	(1996)	(1958)	(2003)	(1958)	(1989)
MIN	20.0	30.3	25.9	24.6	50.0	95.4	67.6	120	84.8	41.5	37.1	20.6
(WY)	(1945)	(1945)	(1945)	(1945)	(1963)	(2000)	(2000)	(1954)	(1949)	(1954)	(1954)	(1954)

03334000 WILDCAT CREEK AT OWASCO, IN—Continued

SUMMARY STATISTICS	FOR 2004 CALENDAR YEAR		FOR 2005 WATER YEAR		WATER YEARS 1945 - 2005	
ANNUAL TOTAL	168,844		176,631			
ANNUAL MEAN	461		484		387	
HIGHEST ANNUAL MEAN					733 1950	
LOWEST ANNUAL MEAN					104 1954	
HIGHEST DAILY MEAN	5,030	Jun 12	10,600	Jan 14	16,300	Jul 6, 2003
LOWEST DAILY MEAN	56	Oct 11	39	Sep 14	12	Oct 23, 1944
ANNUAL SEVEN-DAY MINIMUM	57	Oct 6	41	Sep 9	15	Sep 23, 1954
MAXIMUM PEAK FLOW			11,000	Jan 14	19,300	Jul 6, 2003
MAXIMUM PEAK STAGE			12.71	Jan 14	16.22	Jul 6, 2003
ANNUAL RUNOFF (CFSM)	1.16		1.22		0.977	
ANNUAL RUNOFF (INCHES)	15.86		16.59		13.28	
10 PERCENT EXCEEDS	1,110		976		903	
50 PERCENT EXCEEDS	256		193		169	
90 PERCENT EXCEEDS	100		62		42	

e Estimated



## 03334500 SOUTH FORK WILDCAT CREEK NEAR LAFAYETTE, IN

LOCATION.--Lat 40°25'04", long 86°46'05", in SW<sup>1</sup>/<sub>4</sub>SW<sup>1</sup>/<sub>4</sub> sec.21, T.23 N., R.3 W., Tippecanoe County, Hydrologic Unit 05120107, (LAFAYETTE EAST, IN quadrangle), on right bank 40 ft upstream from bridge on State Highway 26, 0.5 mi upstream from Middle Fork, 4.4 mi upstream from mouth, and 5 mi east of Lafayette.

DRAINAGE AREA.--243 mi<sup>2</sup>.

PERIOD OF RECORD.--October 1943 to current year. Prior to March 1944 monthly discharge only, published in WSP 1305.

REVISED RECORDS.--WSP 1335: 1948(M). WSP 1505: 1947. WSP 1725: 1951-53(M), 1955(M). WSP 1909: 1955(P). WSP 2109: Drainage area.

GAGE.--Water-stage recorder. Datum of gage is 566.60 ft above National Geodetic Vertical Datum of 1929 (Indiana Department of Highways bench mark). Prior to July 29, 1954, nonrecording gage at site 40 ft downstream at same datum.

REMARKS.--Records good except for estimated daily discharges, which are poor. At times peaks affected by backwater from Middle Fork.

EXTREMES OUTSIDE PERIOD OF RECORD.--Flood in May 1943 reached a stage of 16.8 ft, from floodmarks, discharge, 17,900 ft<sup>3</sup>/s by contracted-opening measurement.

DISCHARGE, CUBIC FEET PER SECOND  
WATER YEAR OCTOBER 2004 TO SEPTEMBER 2005  
DAILY MEAN VALUES

DAY	OCT	NOV	DEC	JAN	FEB	MAR	APR	MAY	JUN	JUL	AUG	SEP
1	36	80	786	287	217	261	225	165	72	125	62	42
2	36	151	764	257	206	240	229	152	72	97	57	39
3	35	164	477	396	198	222	246	143	76	82	54	37
4	35	164	347	2,110	194	218	217	136	76	74	52	36
5	34	159	280	2,530	198	224	201	128	72	75	52	35
6	35	135	250	4,390	269	220	189	123	79	83	52	34
7	35	114	592	2,610	411	221	181	121	79	69	57	33
8	35	100	1,230	1,390	879	220	173	127	73	62	51	34
9	35	88	744	873	981	203	161	118	66	59	47	34
10	35	81	470	697	753	194	154	115	63	55	45	33
11	34	77	362	837	585	196	148	111	66	52	45	34
12	34	79	352	5,770	487	196	146	107	68	58	54	33
13	40	77	294	7,450	463	185	155	107	226	63	81	32
14	45	73	232	5,590	984	174	144	128	367	78	71	32
15	51	70	191	2,480	1,230	168	131	121	233	79	62	34
16	59	69	175	1,400	896	163	124	108	171	67	64	45
17	54	68	160	986	843	163	120	101	137	147	58	56
18	59	68	145	758	584	162	118	97	120	124	54	44
19	87	71	140	631	446	163	118	101	107	90	50	46
20	103	72	e115	530	378	163	116	117	97	75	50	71
21	92	68	e112	457	376	156	137	105	90	102	48	70
22	75	66	e92	408	394	153	157	97	84	192	45	52
23	68	65	e86	e365	364	162	293	94	78	185	43	48
24	63	82	e84	e330	334	161	292	92	74	128	42	49
25	62	375	e83	e325	310	175	253	88	70	99	40	51
26	60	436	e82	319	286	264	216	84	68	83	39	176
27	60	346	e82	292	263	286	209	83	66	121	40	240
28	58	509	e81	e232	258	259	198	81	77	145	43	143
29	58	451	86	e256	---	232	184	79	268	102	47	158
30	60	349	95	252	---	209	177	76	158	83	42	225
31	66	---	147	230	---	224	---	73	---	70	45	---
TOTAL	1,639	4,707	9,136	45,438	13,787	6,237	5,412	3,378	3,353	2,924	1,592	1,996
MEAN	52.9	157	295	1,466	492	201	180	109	112	94.3	51.4	66.5
MAX	103	509	1,230	7,450	1,230	286	293	165	367	192	81	240
MIN	34	65	81	230	194	153	116	73	63	52	39	32
CFSM	0.22	0.65	1.21	6.03	2.03	0.83	0.74	0.45	0.46	0.39	0.21	0.27
IN.	0.25	0.72	1.40	6.96	2.11	0.95	0.83	0.52	0.51	0.45	0.24	0.31

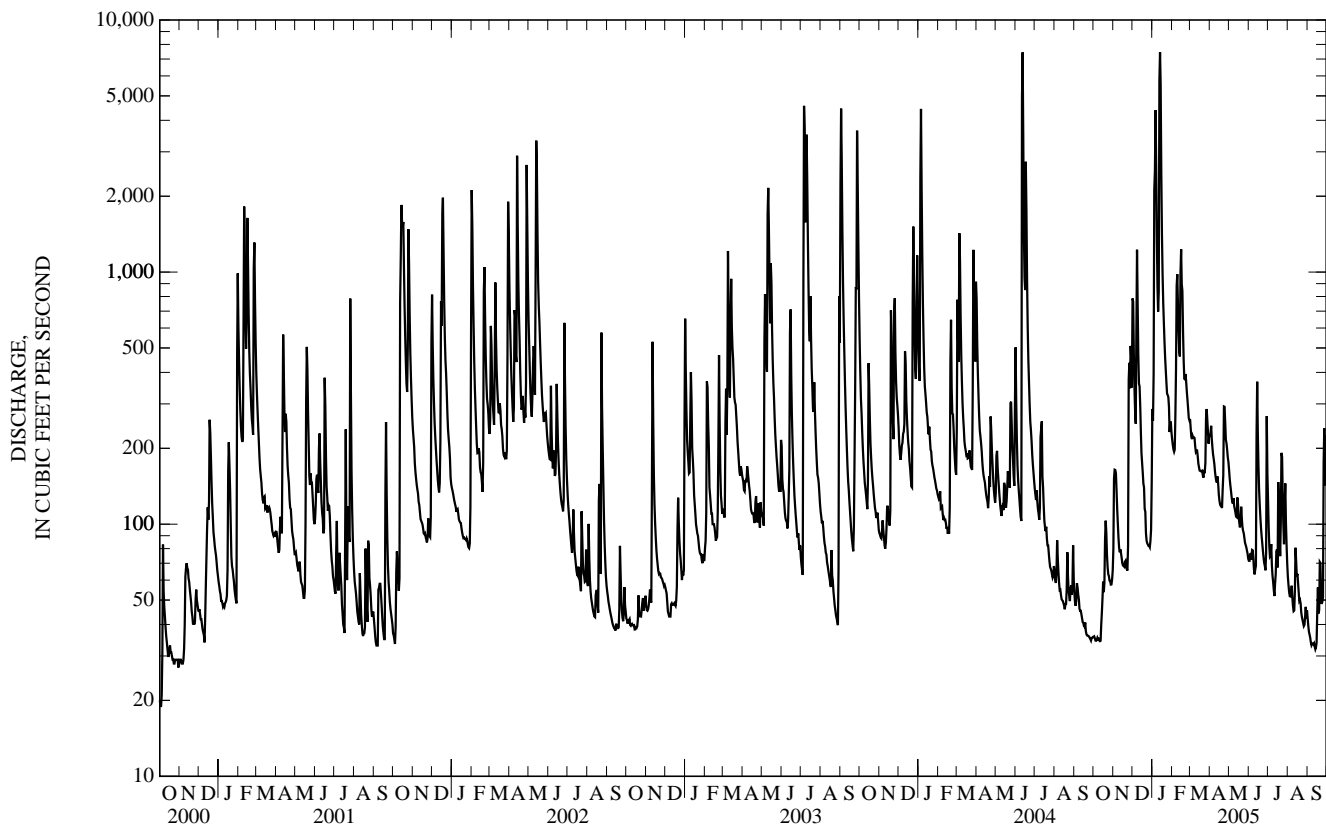
STATISTICS OF MONTHLY MEAN DATA FOR WATER YEARS 1944 - 2005, BY WATER YEAR (WY)

MEAN	102	170	240	313	337	405	392	304	291	177	96.7	106
MAX	568	1,304	954	1,808	929	1,143	1,172	881	1,674	954	510	849
(WY)	(2002)	(1993)	(1991)	(1950)	(1985)	(1982)	(1964)	(1983)	(1958)	(1992)	(1958)	(1989)
MIN	22.9	27.2	23.5	19.5	37.5	62.6	45.9	67.6	40.6	26.2	18.3	18.0
(WY)	(1964)	(2000)	(1964)	(1977)	(1963)	(2000)	(2000)	(1976)	(1977)	(1977)	(1944)	(1944)

03334500 SOUTH FORK WILDCAT CREEK NEAR LAFAYETTE, IN—Continued

SUMMARY STATISTICS	FOR 2004 CALENDAR YEAR		FOR 2005 WATER YEAR		WATER YEARS 1944 - 2005	
ANNUAL TOTAL	99,007		99,599			
ANNUAL MEAN	271		273		244	
HIGHEST ANNUAL MEAN					473 1950	
LOWEST ANNUAL MEAN					79.2 1954	
HIGHEST DAILY MEAN	7,440	Jun 12	7,450	Jan 13	11,000	May 2, 1983
LOWEST DAILY MEAN	34	Oct 5	32	Sep 13	15	Sep 19, 1944
ANNUAL SEVEN-DAY MINIMUM	35	Oct 5	33	Sep 8	16	Sep 17, 1944
MAXIMUM PEAK FLOW			9,110		15,100	
MAXIMUM PEAK STAGE			13.75		15.68	
ANNUAL RUNOFF (CFSM)	1.11		1.12		1.00	
ANNUAL RUNOFF (INCHES)	15.16		15.25		13.62	
10 PERCENT EXCEEDS	480		459		527	
50 PERCENT EXCEEDS	130		117		110	
90 PERCENT EXCEEDS	46		45		34	

e Estimated



## 03335000 WILDCAT CREEK NEAR LAFAYETTE, IN

LOCATION.--Lat 40°26'26", long 86°49'45", in SW<sup>1</sup>/<sub>4</sub>NW<sup>1</sup>/<sub>4</sub> sec.13, T.23 N., R.4 W., Tippecanoe County, Hydrologic Unit 05120107, (LAFAYETTE EAST, IN quadrangle), on right bank about 200 ft downstream of bridge on County Road 2A East, 2.8 mi downstream from South Fork Wildcat Creek, 3.7 mi northeast of courthouse in Lafayette, and 4.8 mi upstream from mouth.

DRAINAGE AREA.--794 mi<sup>2</sup>.

PERIOD OF RECORD.--May 1954 to current year.

REVISED RECORDS.--WSP 1555: 1955, 1957(M), WSP 2109: Drainage area.

GAGE.--Water-stage recorder. Datum of gage is 527.66 ft above National Geodetic Vertical Datum of 1929 (Indiana Flood Control and Water Resources Commission bench mark). Nonrecording gage prior to June 13, 1957, and August 31, 1974, to May 20, 1976, at present site and datum.

REMARKS.--Records good except those for Aug. 20 to Sept. 3 and estimated daily discharges, which are poor.

EXTREMES OUTSIDE PERIOD OF RECORD.--Flood of March 1913 reached a stage of about 25.4 ft, from profile by State of Indiana, Department of Natural Resources.

DISCHARGE, CUBIC FEET PER SECOND  
WATER YEAR OCTOBER 2004 TO SEPTEMBER 2005  
DAILY MEAN VALUES

DAY	OCT	NOV	DEC	JAN	FEB	MAR	APR	MAY	JUN	JUL	AUG	SEP
1	157	446	2,870	1,020	603	866	666	768	252	323	180	107
2	148	807	2,960	1,300	583	793	632	663	246	276	155	103
3	141	985	2,200	1,940	536	729	674	596	260	239	141	93
4	137	922	1,630	5,700	509	696	607	545	264	220	135	86
5	135	840	1,290	8,190	518	704	568	502	256	225	134	80
6	131	680	1,120	11,700	649	697	536	466	247	219	134	80
7	132	580	1,980	9,900	970	690	513	450	362	214	144	77
8	131	495	4,030	7,580	2,390	681	500	449	293	187	151	80
9	128	430	3,310	4,480	3,400	631	484	431	255	175	127	78
10	124	391	2,480	3,040	3,100	589	458	409	236	163	127	76
11	123	375	1,920	3,620	2,310	584	438	388	241	149	142	72
12	125	362	1,730	12,300	1,790	575	435	378	272	171	159	67
13	164	367	1,470	16,100	1,750	547	453	385	584	168	294	65
14	307	338	1,210	17,200	3,820	511	434	487	1,160	175	377	66
15	302	314	1,000	12,400	4,430	483	405	440	896	200	241	69
16	259	311	877	7,290	4,340	466	374	398	653	194	195	101
17	228	310	788	3,830	3,810	474	366	368	501	340	178	177
18	241	310	719	2,520	2,590	469	363	350	420	296	159	147
19	460	330	681	1,990	1,840	440	361	367	365	220	144	132
20	538	334	616	1,560	1,480	421	391	435	328	197	139	176
21	419	328	e560	1,310	1,540	406	451	402	296	227	133	163
22	346	315	e500	1,140	1,570	392	642	369	272	341	124	144
23	309	309	e460	958	1,410	406	1,160	350	252	491	116	127
24	298	419	e450	896	1,250	410	1,750	332	239	320	115	170
25	311	1,660	e440	884	1,120	435	1,940	318	227	247	107	251
26	286	2,000	e440	830	1,000	626	1,360	307	216	215	107	494
27	278	1,800	e430	759	908	722	1,160	291	213	304	108	885
28	281	2,190	e430	661	869	651	1,220	281	292	481	105	488
29	308	1,940	e470	692	---	682	1,060	273	522	317	115	450
30	308	1,670	519	663	---	627	891	264	436	241	109	687
31	378	---	730	627	---	632	---	260	---	202	112	---
TOTAL	7,633	22,558	40,310	143,080	51,085	18,035	21,292	12,722	11,056	7,737	4,707	5,791
MEAN	246	752	1,300	4,615	1,824	582	710	410	369	250	152	193
MAX	538	2,190	4,030	17,200	4,430	866	1,940	768	1,160	491	377	885
MIN	123	309	430	627	509	392	361	260	213	149	105	65
CFSM	0.31	0.95	1.64	5.81	2.30	0.73	0.89	0.52	0.46	0.31	0.19	0.24
IN.	0.36	1.06	1.89	6.70	2.39	0.84	1.00	0.60	0.52	0.36	0.22	0.27

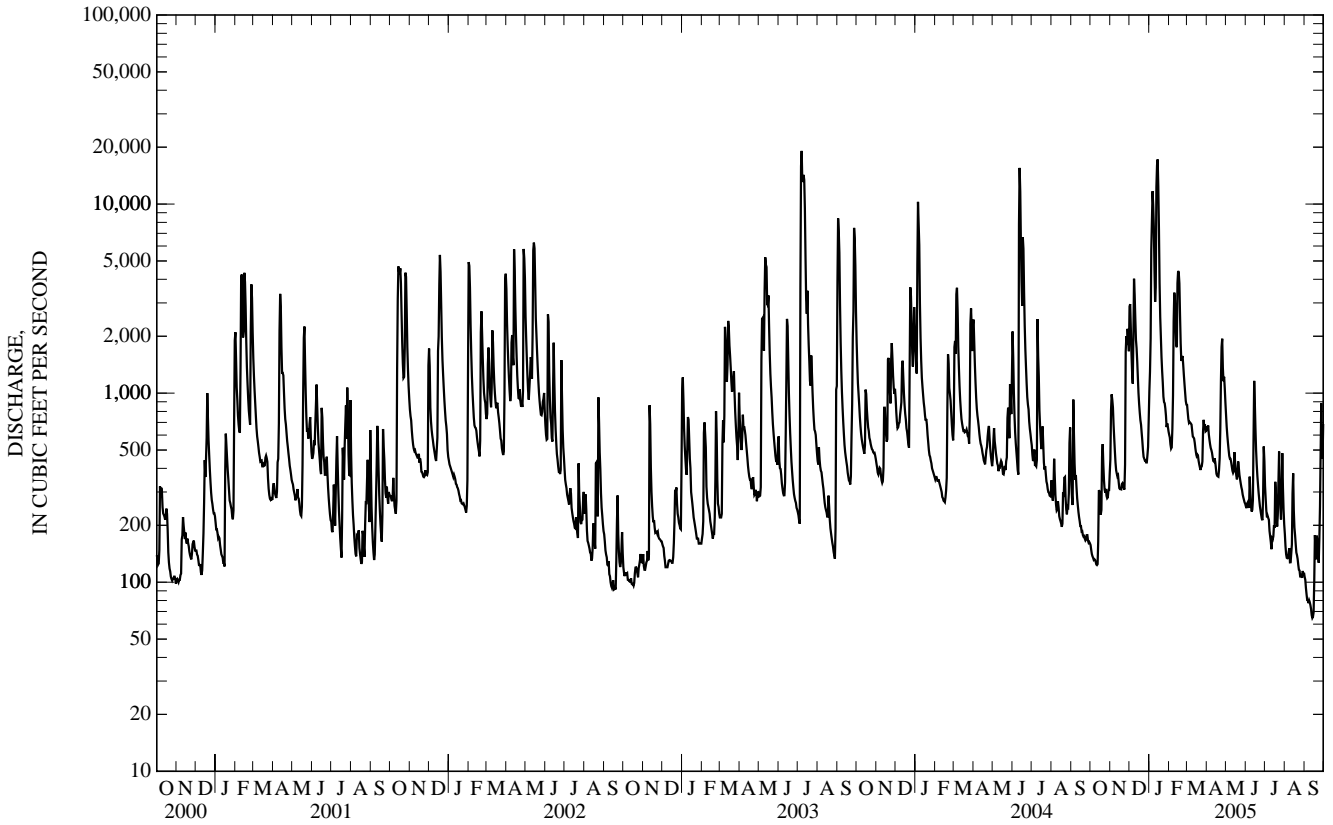
## STATISTICS OF MONTHLY MEAN DATA FOR WATER YEARS 1955 - 2005, BY WATER YEAR (WY)

MEAN	327	569	807	896	1,070	1,345	1,255	945	903	662	334	325
MAX	1,792	3,963	2,474	4,615	3,227	3,991	3,657	2,614	5,210	4,318	1,511	2,546
(WY)	(2002)	(1993)	(1991)	(2005)	(1976)	(1982)	(1964)	(1983)	(1958)	(2003)	(1958)	(1989)
MIN	67.9	85.6	67.0	61.6	104	196	146	231	130	84.4	79.8	68.8
(WY)	(1964)	(1964)	(1964)	(1977)	(1963)	(2000)	(2000)	(1976)	(1988)	(1977)	(1966)	(1999)

03335000 WILDCAT CREEK NEAR LAFAYETTE, IN—Continued

SUMMARY STATISTICS	FOR 2004 CALENDAR YEAR		FOR 2005 WATER YEAR		WATER YEARS 1955 - 2005	
ANNUAL TOTAL	338,455		346,006			
ANNUAL MEAN	925		948		785	
HIGHEST ANNUAL MEAN					1,460	1993
LOWEST ANNUAL MEAN					264	2000
HIGHEST DAILY MEAN	15,500	Jun 12	17,200	Jan 14	22,100	Jun 10, 1958
LOWEST DAILY MEAN	123	Oct 11	65	Sep 13	47	Sep 6, 1964
ANNUAL SEVEN-DAY MINIMUM	128	Oct 6	70	Sep 9	51	Dec 20, 1963
MAXIMUM PEAK FLOW			18,200	Jan 14	25,000	Jun 10, 1958
MAXIMUM PEAK STAGE			20.27	Jan 14	23.64	Jul 7, 2003
ANNUAL RUNOFF (CF5M)	1.16		1.19		0.988	
ANNUAL RUNOFF (INCHES)	15.86		16.21		13.43	
10 PERCENT EXCEEDS	1,930		1,940		1,770	
50 PERCENT EXCEEDS	464		430		365	
90 PERCENT EXCEEDS	222		132		114	

e Estimated



## 03335500 WABASH RIVER AT LAFAYETTE, IN

LOCATION.--Lat 40°25'19", long 86°53'49", in NE<sup>1</sup>/<sub>4</sub>SW<sup>1</sup>/<sub>4</sub> sec.20, T.23 N., R.4 W., Tippecanoe County, Hydrologic Unit 05120108, (LAFAYETTE WEST, IN quadrangle), on right bank 20 ft downstream from Brown St. in Lafayette, 0.2 mi upstream from Main St. bridge, 0.3 mi downstream from Harrison Memorial Bridge, 5.1 mi downstream from Wildcat Creek, and at mile 311.9.

DRAINAGE AREA.--7,267 mi<sup>2</sup>.

PERIOD OF RECORD.--February 1901 to January 1902, March to December 1902, January to May 1903 (gage height only), October 1923 to current year. Monthly discharge only for some periods, published in WSP 1305. Gage-height records collected at present site since October 1913 are contained in reports of National Weather Service.

REVISED RECORDS.--WSP 1335: 1929, 1932-33, 1936. WSP 1505: 1950. WSP 1555: 1928(M). WSP 2109: Drainage area. WDR IN-81-1: 1979.

GAGE.--Water-stage recorder. Datum of gage is 504.14 ft above National Geodetic Vertical Datum of 1929. Prior to May 2, 1903, nonrecording gage 0.5 mi upstream at different datum. Oct. 7, 1923, to Nov. 20, 1933, nonrecording gage at same site and datum.

REMARKS.--Records good. Flow partially regulated by upstream reservoirs and power development.

EXTREMES OUTSIDE PERIOD OF RECORD.--Flood of Mar. 26, 1913, reached a stage of 32.9 ft, from floodmark determined by National Weather Service, discharge, 190,000 ft<sup>3</sup>/s.

DISCHARGE, CUBIC FEET PER SECOND  
WATER YEAR OCTOBER 2004 TO SEPTEMBER 2005  
DAILY MEAN VALUES

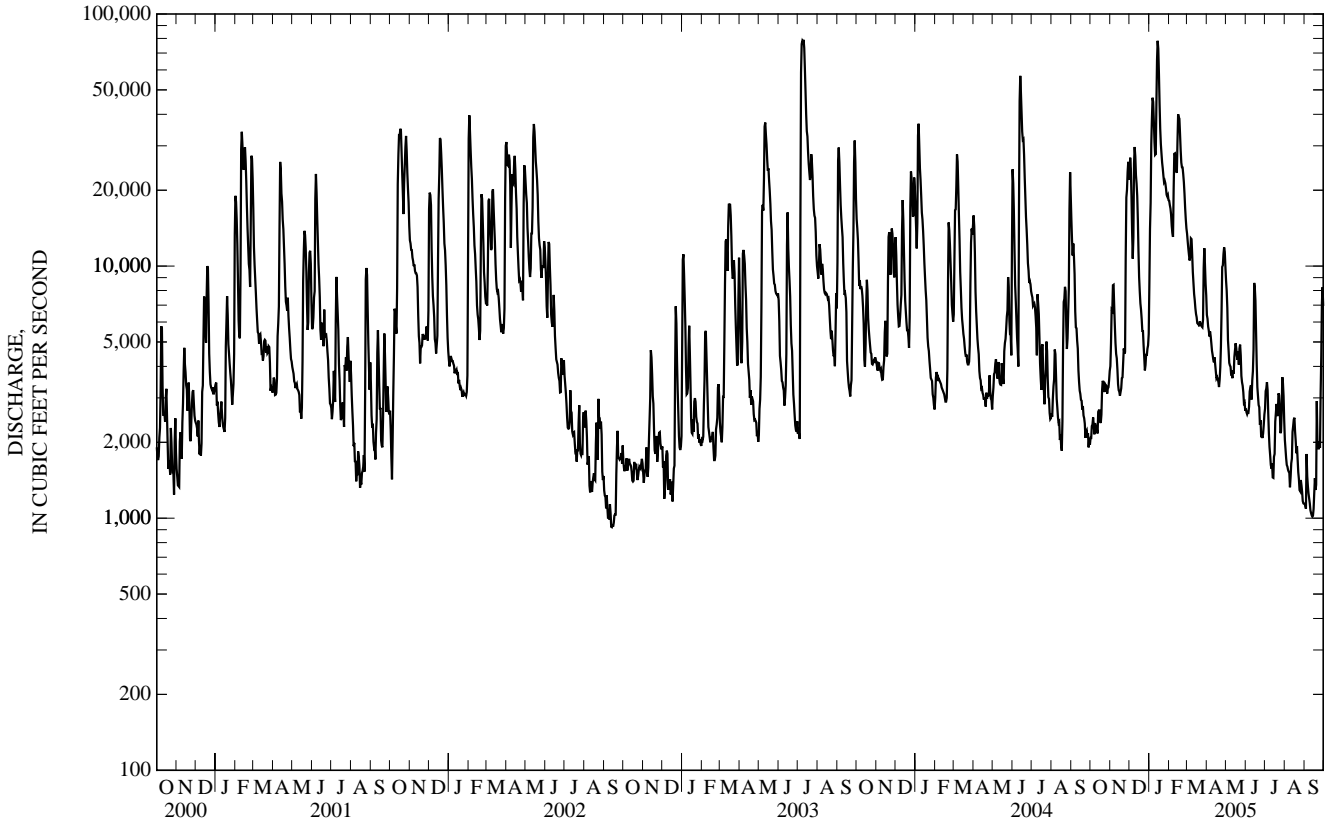
DAY	OCT	NOV	DEC	JAN	FEB	MAR	APR	MAY	JUN	JUL	AUG	SEP
1	2,080	4,010	22,700	8,400	18,200	13,400	6,400	8,770	2,720	2,720	2,050	1,140
2	2,080	4,960	26,900	14,000	17,500	12,500	6,180	7,990	2,630	3,190	1,880	1,120
3	2,320	6,710	24,400	17,800	16,900	11,700	5,760	6,810	2,580	3,270	1,730	1,090
4	2,350	6,650	19,000	30,500	16,000	11,100	5,550	5,090	2,630	3,460	1,630	1,800
5	2,510	8,390	13,700	38,500	14,400	10,500	5,260	4,620	2,620	3,220	1,600	1,470
6	2,340	8,430	10,700	46,500	13,600	10,900	5,500	4,130	2,770	2,610	1,550	1,340
7	2,150	6,910	13,000	44,800	13,100	12,900	5,260	4,040	3,180	2,170	1,530	1,250
8	2,390	5,780	25,500	37,600	20,200	12,800	4,930	3,990	3,300	1,920	1,520	1,200
9	2,230	4,950	29,700	31,100	27,900	11,100	4,610	3,710	3,370	1,780	1,330	1,150
10	2,340	4,490	27,200	27,600	28,000	9,470	4,440	3,700	2,960	1,630	1,460	1,070
11	2,240	4,310	22,900	27,800	25,800	8,570	4,260	3,590	3,530	1,570	1,650	1,050
12	2,170	3,890	21,200	44,000	23,800	7,750	4,150	3,860	3,830	1,650	1,720	1,030
13	2,640	3,400	19,000	65,900	23,400	7,320	4,350	3,740	4,680	1,450	2,200	1,010
14	2,680	3,220	15,200	78,300	30,900	6,800	4,070	4,370	8,580	1,450	2,320	1,020
15	2,670	3,180	11,400	72,800	40,000	6,460	3,820	4,640	8,220	1,750	2,460	1,090
16	2,420	3,060	9,050	57,300	38,900	6,270	3,590	4,940	7,290	1,800	2,500	1,260
17	2,390	3,170	7,930	44,100	38,400	5,940	3,630	4,730	5,460	2,420	2,210	1,440
18	2,570	3,270	7,110	35,000	33,500	5,900	3,570	4,390	4,080	2,620	2,030	1,290
19	3,190	3,590	6,700	30,500	28,800	5,880	3,470	4,250	3,310	2,840	1,810	1,360
20	3,510	3,620	6,170	27,900	25,700	5,770	3,310	4,580	3,050	2,640	1,930	2,910
21	3,450	4,130	5,530	25,700	24,700	6,040	3,540	4,060	2,810	2,540	1,710	2,020
22	3,210	4,710	5,520	24,300	24,600	5,940	3,960	4,710	2,760	3,130	1,520	1,960
23	3,170	4,500	4,840	22,800	23,200	5,850	4,820	4,880	2,350	3,080	1,430	1,880
24	3,400	4,560	4,360	21,500	21,500	5,760	6,640	4,430	2,450	2,760	1,290	2,020
25	3,360	10,800	3,860	21,800	19,300	5,720	9,930	3,660	2,090	2,170	1,280	1,900
26	3,340	18,700	4,050	21,300	17,000	6,140	10,100	3,460	2,120	2,210	1,420	3,150
27	3,120	20,100	4,480	20,400	15,300	9,820	11,200	3,350	2,080	2,620	1,350	4,410
28	3,270	23,700	4,410	19,200	14,100	11,800	11,900	3,160	2,170	3,630	1,280	7,140
29	3,300	25,900	4,700	18,900	---	10,100	11,400	2,860	2,350	3,450	1,170	8,240
30	3,520	22,000	4,850	19,100	---	8,510	9,940	2,890	2,580	3,050	1,150	6,950
31	3,840	---	5,370	18,300	---	7,640	---	2,670	---	2,430	1,140	---
TOTAL	86,250	235,090	391,430	1,013,700	654,700	266,350	175,540	136,070	104,550	77,230	51,850	65,760
MEAN	2,782	7,836	12,630	32,700	23,380	8,592	5,851	4,389	3,485	2,491	1,673	2,192
MAX	3,840	25,900	29,700	78,300	40,000	13,400	11,900	8,770	8,580	3,630	2,500	8,240
MIN	2,080	3,060	3,860	8,400	13,100	5,720	3,310	2,670	2,080	1,450	1,140	1,010
CFSM	0.38	1.08	1.74	4.50	3.22	1.18	0.81	0.60	0.48	0.34	0.23	0.30
IN.	0.44	1.20	2.00	5.19	3.35	1.36	0.90	0.70	0.54	0.40	0.27	0.34

## STATISTICS OF MONTHLY MEAN DATA FOR WATER YEARS 1924 - 2005, BY WATER YEAR (WY)

MEAN	3,164	4,357	6,784	8,676	9,698	11,650	11,370	8,320	6,804	4,638	2,893	2,783
MAX	17,250	19,910	25,250	42,040	28,000	33,560	28,000	37,290	31,830	31,730	12,890	20,120
(WY)	(2002)	(1993)	(1928)	(1950)	(1959)	(1982)	(1957)	(1943)	(1958)	(2003)	(1998)	(1926)
MIN	652	828	747	735	1,232	1,663	3,135	1,460	1,029	655	484	435
(WY)	(1964)	(1965)	(1964)	(1977)	(1964)	(1941)	(1941)	(1934)	(1934)	(1936)	(1941)	(1941)

03335500 WABASH RIVER AT LAFAYETTE, IN—Continued

SUMMARY STATISTICS	FOR 2004 CALENDAR YEAR		FOR 2005 WATER YEAR		WATER YEARS 1924 - 2005	
ANNUAL TOTAL	2,905,060		3,258,520			
ANNUAL MEAN	7,937		8,927		6,744	
HIGHEST ANNUAL MEAN					12,340	1950
LOWEST ANNUAL MEAN					1,631	1941
HIGHEST DAILY MEAN	56,800	Jun 13	78,300	Jan 14	129,000	May 19, 1943
LOWEST DAILY MEAN	1,850	Aug 17	1,010	Sep 13	399	Sep 26, 1941
ANNUAL SEVEN-DAY MINIMUM	2,050	Sep 26	1,060	Sep 9	404	Sep 21, 1941
MAXIMUM PEAK FLOW			80,000	Jan 14	131,000	May 19, 1943
MAXIMUM PEAK STAGE			25.04	Jan 14	28.47	May 19, 1943
ANNUAL RUNOFF (CFSM)	1.09		1.23		0.928	
ANNUAL RUNOFF (INCHES)	14.87		16.68		12.61	
10 PERCENT EXCEEDS	19,000		24,300		16,200	
50 PERCENT EXCEEDS	4,640		4,150		3,680	
90 PERCENT EXCEEDS	2,560		1,590		1,190	





## 03336000 WABASH RIVER AT COVINGTON, IN

LOCATION.--Lat 40°08'24", long 87°24'24", in NE<sup>1</sup>/<sub>4</sub>NW<sup>1</sup>/<sub>4</sub> sec.35, T.20 N., R.9 W., Warren County, Hydrologic Unit 05120108, (COVINGTON, IN quadrangle), on right approach to old U.S. Highway 136 bridge at Covington, 2.9 mi downstream from Oppossum Run, 3.6 mi upstream from Spring Creek, and at mile 271.1.

DRAINAGE AREA.--8,218 mi<sup>2</sup>.

PERIOD OF RECORD.--October 1939 to current year. Gage-height records collected at site 0.4 mi downstream January 1927 to December 1930, and at present site since January 1931 are contained in reports of National Weather Service.

REVISED RECORDS.--WDR IN-73-1: Drainage area.

GAGE.--Water-stage recorder. Datum of gage is 473.97 ft above National Geodetic Vertical Datum of 1929. Prior to Oct. 1, 1979, nonrecording gage on old bridge at same datum.

REMARKS.--Records good except for estimated daily discharges, which are poor. Flow partially regulated by upstream reservoirs.

EXTREMES OUTSIDE PERIOD OF RECORD.--Flood in March 1913 reached a stage of 35.1 ft, from floodmark determined by National Weather Service, discharge, 200,000 ft<sup>3</sup>/s.

DISCHARGE, CUBIC FEET PER SECOND  
WATER YEAR OCTOBER 2004 TO SEPTEMBER 2005  
DAILY MEAN VALUES

DAY	OCT	NOV	DEC	JAN	FEB	MAR	APR	MAY	JUN	JUL	AUG	SEP
1	2,350	4,360	27,000	6,890	19,100	15,300	7,930	10,200	3,120	2,820	2,640	1,480
2	2,460	4,980	27,400	11,500	18,700	14,300	7,000	9,090	3,130	2,940	2,310	1,480
3	2,470	6,650	28,500	16,100	18,000	13,200	6,750	8,490	3,110	3,290	2,150	1,470
4	2,640	7,740	27,700	22,500	17,400	12,400	6,380	6,870	3,070	3,480	2,010	1,450
5	2,710	8,480	23,200	29,500	16,300	11,700	6,090	5,620	3,100	3,690	1,920	1,860
6	2,840	9,770	16,600	38,800	15,100	11,400	5,930	5,090	3,080	3,390	1,890	1,690
7	2,690	8,690	16,700	45,400	14,700	12,600	6,080	4,700	3,190	2,820	1,860	1,570
8	2,620	7,430	22,600	45,000	17,300	13,800	5,770	4,640	3,550	2,440	1,830	1,490
9	2,680	6,210	27,100	40,200	23,100	12,900	5,440	4,560	3,640	2,200	1,830	1,440
10	2,630	5,480	29,900	35,100	26,600	11,300	5,140	4,330	3,610	2,060	1,680	1,400
11	2,630	5,020	29,900	32,100	28,000	9,810	5,040	4,380	3,290	1,930	1,750	1,340
12	2,580	4,800	27,600	36,100	27,500	8,980	4,880	4,300	3,930	1,940	1,890	1,300
13	2,600	4,370	24,900	48,400	26,400	8,340	4,850	4,540	4,130	1,970	2,060	1,290
14	3,000	3,930	21,400	75,200	28,100	7,810	4,940	4,920	5,980	1,820	2,340	1,270
15	2,970	3,850	16,600	83,700	31,600	7,280	4,620	5,390	8,920	1,800	2,490	1,290
16	2,980	3,700	12,300	75,300	36,600	7,070	4,350	5,180	8,230	2,020	2,630	1,420
17	2,790	3,650	10,100	58,600	38,600	6,820	4,140	5,300	7,290	2,150	2,620	1,510
18	2,840	3,710	9,060	45,700	37,600	6,620	4,150	5,030	5,530	2,680	2,390	1,640
19	3,120	3,860	8,100	39,200	34,900	6,500	4,090	4,810	4,380	2,820	2,230	1,560
20	3,690	4,200	7,710	34,100	31,500	6,470	3,940	5,760	3,690	2,980	2,100	1,800
21	3,840	4,290	7,030	30,700	29,200	6,400	4,040	5,850	3,390	3,190	2,130	2,730
22	3,740	4,750	6,620	28,500	27,700	6,600	5,660	5,060	3,210	3,760	1,950	2,210
23	3,620	5,100	6,220	26,800	26,700	6,580	5,740	5,420	3,080	4,030	1,790	2,080
24	3,610	5,180	5,660	25,000	25,500	6,450	6,310	5,340	2,770	3,590	1,710	2,070
25	3,720	8,690	e5,000	23,600	23,800	6,470	8,690	4,810	2,780	3,060	1,610	2,190
26	3,710	16,500	e4,200	23,100	21,200	6,670	10,800	4,140	2,520	2,540	1,590	2,290
27	3,650	21,000	e4,700	22,500	18,500	7,720	11,100	3,840	2,470	2,510	1,690	3,530
28	3,520	23,100	e5,200	21,300	16,500	11,600	12,200	3,710	2,440	2,940	1,650	4,840
29	3,630	25,400	e6,000	20,300	---	11,800	12,300	3,520	2,630	3,650	1,570	7,360
30	3,810	27,000	e6,600	20,000	---	10,200	11,700	3,250	2,680	3,500	1,470	7,860
31	4,180	---	e7,400	19,700	---	9,030	---	3,280	---	3,140	1,470	---
TOTAL	96,320	251,890	479,000	1,080,890	696,200	294,120	196,050	161,420	115,940	87,150	61,250	66,910
MEAN	3,107	8,396	15,450	34,870	24,860	9,488	6,535	5,207	3,865	2,811	1,976	2,230
MAX	4,180	27,000	29,900	83,700	38,600	15,300	12,300	10,200	8,920	4,030	2,640	7,860
MIN	2,350	3,650	4,200	6,890	14,700	6,400	3,940	3,250	2,440	1,800	1,470	1,270
CFSM	0.38	1.02	1.88	4.24	3.03	1.15	0.80	0.63	0.47	0.34	0.24	0.27
IN.	0.44	1.14	2.17	4.89	3.15	1.33	0.89	0.73	0.52	0.39	0.28	0.30

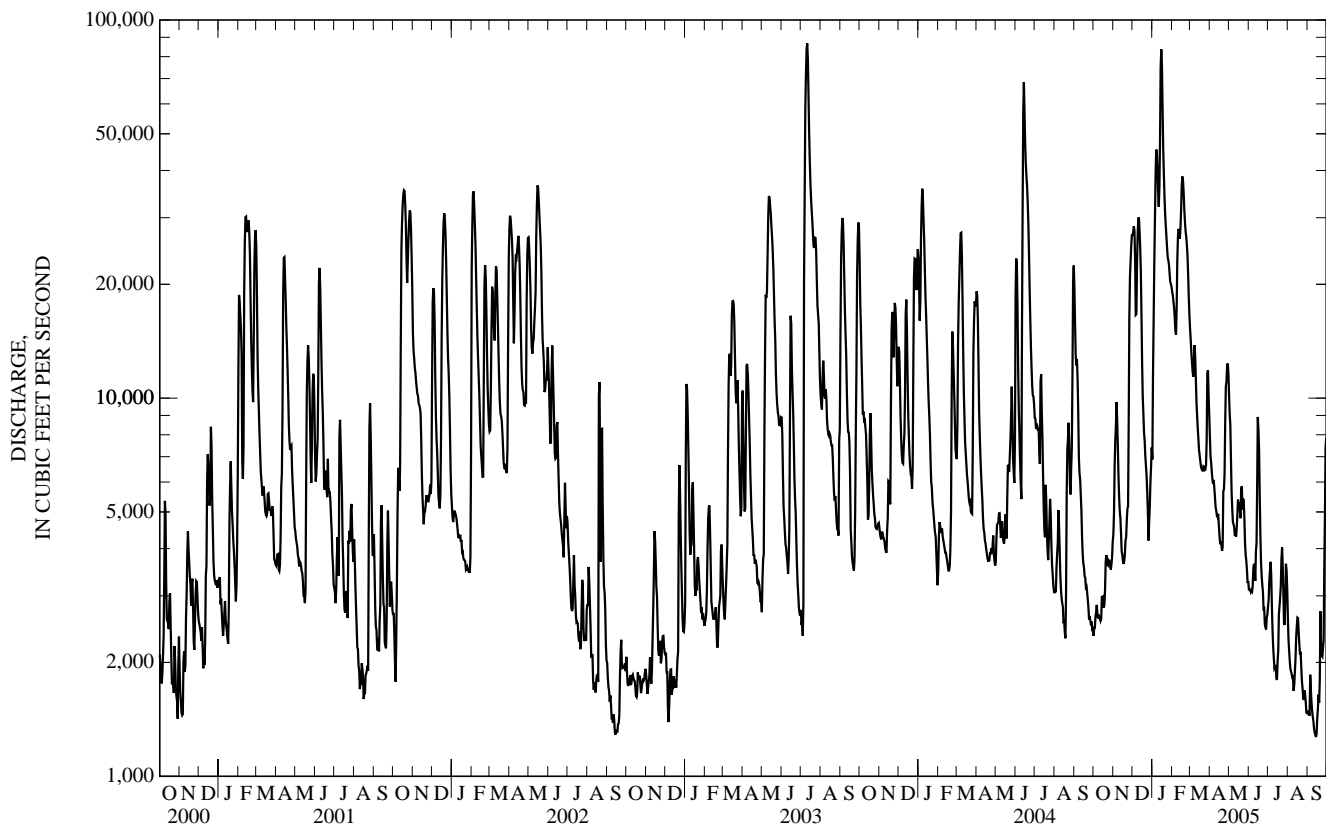
STATISTICS OF MONTHLY MEAN DATA FOR WATER YEARS 1940 - 2005, BY WATER YEAR (WY)

MEAN	3,616	4,944	7,364	9,383	10,970	13,030	12,820	9,939	8,545	5,790	3,583	3,116
MAX	18,360	23,930	22,080	49,700	34,450	34,840	28,470	43,540	36,010	31,750	13,470	14,030
(WY)	(2002)	(1993)	(1968)	(1950)	(1959)	(1982)	(1957)	(1943)	(1958)	(2003)	(1998)	(2003)
MIN	738	919	810	896	1,357	1,915	3,536	1,814	1,542	1,212	640	545
(WY)	(1965)	(1965)	(1964)	(1977)	(1963)	(1941)	(1941)	(1941)	(1988)	(1988)	(1941)	(1941)

03336000 WABASH RIVER AT COVINGTON, IN—Continued

SUMMARY STATISTICS	FOR 2004 CALENDAR YEAR		FOR 2005 WATER YEAR		WATER YEARS 1940 - 2005	
ANNUAL TOTAL	3,446,450		3,587,140			
ANNUAL MEAN	9,417		9,828		7,739	
HIGHEST ANNUAL MEAN					14,980	1950
LOWEST ANNUAL MEAN					1,862	1941
HIGHEST DAILY MEAN	68,500	Jun 14	83,700	Jan 15	143,000	May 20, 1943
LOWEST DAILY MEAN	2,320	Aug 18	1,270	Sep 14	487	Sep 29, 1941
ANNUAL SEVEN-DAY MINIMUM	2,470	Sep 27	1,330	Sep 10	497	Sep 24, 1941
MAXIMUM PEAK FLOW			85,600	Jan 15	147,000	May 20, 1943
MAXIMUM PEAK STAGE			28.64	Jan 15	32.44	May 20, 1943
ANNUAL RUNOFF (CF5M)	1.15		1.20		0.942	
ANNUAL RUNOFF (INCHES)	15.60		16.24		12.79	
10 PERCENT EXCEEDS	22,800		27,000		18,800	
50 PERCENT EXCEEDS	5,500		4,850		4,480	
90 PERCENT EXCEEDS	3,060		1,880		1,500	

e Estimated



03339280 PRAIRIE CREEK NEAR LEBANON, IN

LOCATION.--Lat 40°06'16", long 86°31'22", in NW $\frac{1}{4}$ SW $\frac{1}{4}$  sec.10, T.19 N., R.1 W., Boone County, Hydrologic Unit 05120110, (HAZELRIGG, IN quadrangle), on right bank 50 ft upstream from bridge on County Road 450 North, 4.0 mi upstream from Deer Creek, 4.9 mi northwest of Lebanon, and 7.7 mi upstream from mouth.

DRAINAGE AREA.--33.2 mi<sup>2</sup>.

PERIOD OF RECORD.--October 1987 to current year.

GAGE.--Water-stage recorder. Datum of gage is 860.00 ft above National Geodetic Vertical Datum of 1929.

REMARKS.--Records fair except for estimated daily discharges, which are poor.

DISCHARGE, CUBIC FEET PER SECOND  
WATER YEAR OCTOBER 2004 TO SEPTEMBER 2005  
DAILY MEAN VALUES

DAY	OCT	NOV	DEC	JAN	FEB	MAR	APR	MAY	JUN	JUL	AUG	SEP
1	2.9	4.0	91	42	e13	25	21	40	9.0	6.8	3.8	8.2
2	3.7	17	51	57	e13	22	25	35	12	5.8	3.5	4.5
3	e1.8	11	29	620	e12	19	21	31	12	4.5	2.6	3.1
4	e1.5	6.0	20	648	e14	20	19	26	11	3.8	2.9	1.6
5	e1.2	4.6	15	e1,180	20	20	17	23	13	4.3	e8.0	1.2
6	e1.0	4.0	14	926	34	18	16	22	21	3.6	6.1	e1.1
7	e0.98	3.6	113	e250	68	21	19	22	14	2.8	4.9	e1.0
8	e0.95	3.4	101	e145	116	18	20	21	10	2.6	3.8	e0.90
9	e0.92	3.3	53	e118	89	16	16	19	9.4	2.4	2.6	e0.88
10	e0.90	3.1	36	122	68	16	15	17	7.7	2.3	2.1	e0.85
11	e1.9	7.4	35	618	51	18	15	16	8.9	3.3	18	e0.84
12	2.9	12	29	758	46	17	16	20	21	18	27	e0.81
13	6.3	5.4	22	731	55	15	24	18	234	13	8.3	e0.90
14	5.6	4.2	15	369	149	14	22	73	123	9.4	4.2	e1.2
15	6.3	3.6	12	130	96	13	17	53	76	e17	8.3	1.8
16	5.5	4.9	11	83	141	13	15	32	51	17	7.5	20
17	4.4	4.3	11	60	85	13	14	26	35	122	5.3	e6.6
18	17	3.8	9.9	e44	55	13	14	24	25	45	3.8	4.5
19	15	5.2	9.2	e38	43	14	14	75	21	23	5.1	7.8
20	5.6	4.9	e8.4	e32	39	13	14	93	16	9.5	4.9	69
21	4.2	4.1	e7.8	e28	43	12	19	54	14	58	3.4	19
22	3.6	4.3	e7.3	e25	39	12	192	41	12	188	2.1	9.1
23	5.1	4.5	e7.0	e23	33	21	195	32	9.3	61	2.0	6.3
24	6.8	51	e6.7	e21	32	16	112	23	8.2	29	1.3	7.1
25	4.3	61	e6.5	e20	28	32	75	20	7.3	16	1.8	42
26	3.6	24	e6.2	e18	26	44	75	18	6.9	10	2.0	153
27	5.1	23	e5.8	e17	24	33	97	18	5.8	60	19	64
28	4.6	46	e7.0	e16	26	29	65	18	5.9	34	8.3	33
29	4.0	22	e9.0	e15	---	24	52	15	9.0	16	5.3	78
30	8.0	27	e18	e14	---	22	49	12	11	9.8	7.2	46
31	5.1	---	62	e13	---	27	---	10	---	6.0	22	---
TOTAL	140.75	382.6	828.8	7,181	1,458	610	1,285	947	819.4	803.9	207.1	594.28
MEAN	4.54	12.8	26.7	232	52.1	19.7	42.8	30.5	27.3	25.9	6.68	19.8
MAX	17	61	113	1,180	149	44	195	93	234	188	27	153
MIN	0.90	3.1	5.8	13	12	12	14	10	5.8	2.3	1.3	0.81
CFSM	0.14	0.38	0.81	6.98	1.57	0.59	1.29	0.92	0.82	0.78	0.20	0.60
IN.	0.16	0.43	0.93	8.05	1.63	0.68	1.44	1.06	0.92	0.90	0.23	0.67

STATISTICS OF MONTHLY MEAN DATA FOR WATER YEARS 1988 - 2005, BY WATER YEAR (WY)

	1988	1989	1990	1991	1992	1993	1994	1995	1996	1997	1998	1999	2000	2001	2002	2003	2004	2005
MEAN	15.1	34.1	32.8	53.4	46.4	54.9	51.4	67.6	42.4	34.3	10.1	23.1						
MAX	94.3	205	158	232	139	109	96.7	248	158	168	34.8	139						
(WY)	(2002)	(1993)	(1991)	(2005)	(1990)	(1990)	(1989)	(1996)	(1998)	(2003)	(1989)	(1989)						
MIN	1.59	2.37	3.84	4.73	7.18	11.2	9.73	6.45	4.34	3.08	2.27	1.24						
(WY)	(1998)	(1998)	(1998)	(2000)	(1998)	(2000)	(2000)	(1988)	(1988)	(1991)	(1999)	(1999)						

SUMMARY STATISTICS

FOR 2004 CALENDAR YEAR

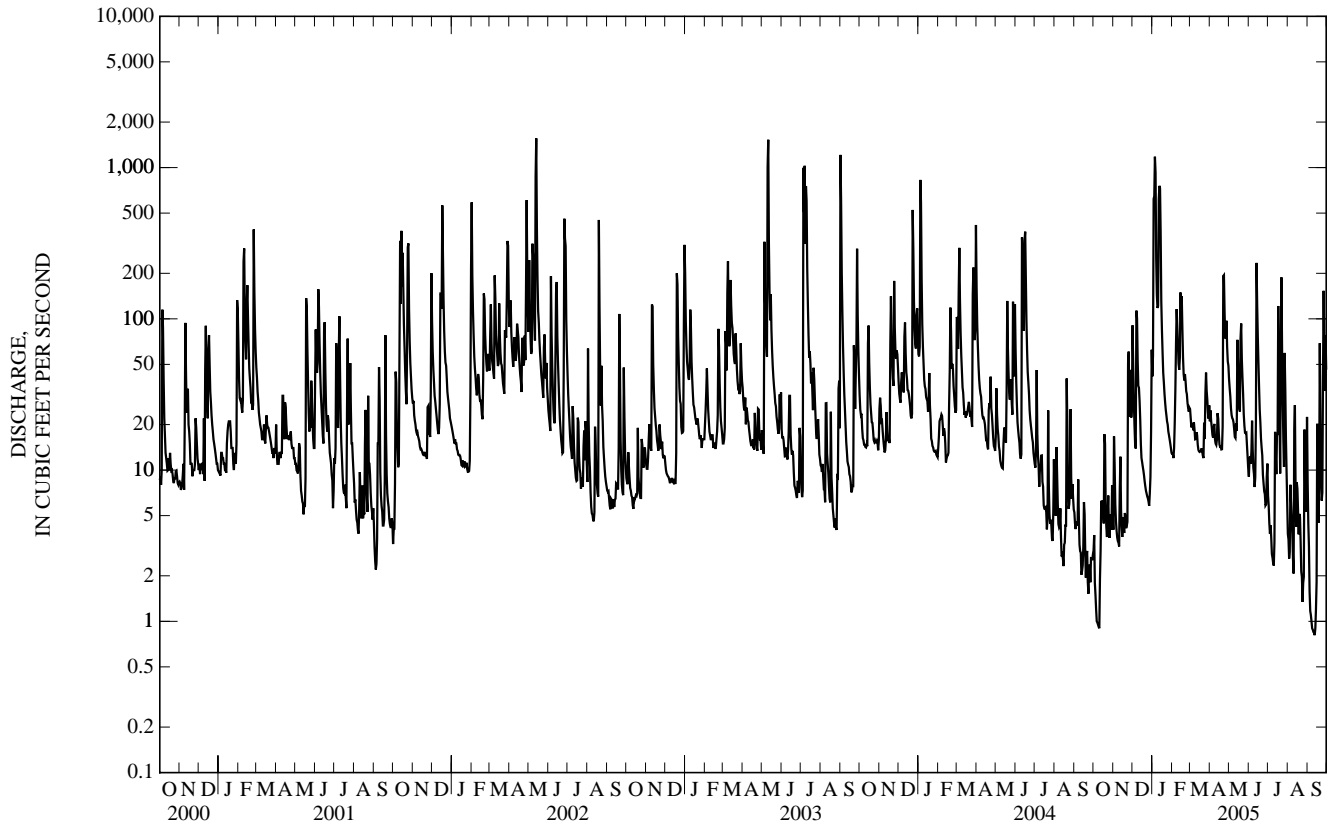
FOR 2005 WATER YEAR

WATER YEARS 1988 - 2005

ANNUAL TOTAL	12,252.45	15,257.83				
ANNUAL MEAN	33.5	41.8	38.8			
HIGHEST ANNUAL MEAN			66.4			
LOWEST ANNUAL MEAN			10.0			
HIGHEST DAILY MEAN	829	Jan 4	1,180	Jan 5	1,900	Dec 30, 1990
LOWEST DAILY MEAN	0.90	Oct 10	0.81	Sep 12	0.20	Sep 11, 1999
ANNUAL SEVEN-DAY MINIMUM	1.1	Oct 4	0.88	Sep 7	0.24	Sep 21, 1999
MAXIMUM PEAK FLOW			1,840	Jan 11	2,710	Mar 11, 1990
MAXIMUM PEAK STAGE			11.75	Jan 11	13.99	Mar 11, 1990
ANNUAL RUNOFF (CFSM)	1.01		1.26		1.17	
ANNUAL RUNOFF (INCHES)	13.73		17.10		15.87	
10 PERCENT EXCEEDS	65		75		76	
50 PERCENT EXCEEDS	14		16		14	
90 PERCENT EXCEEDS	3.2		3.0		2.9	

e Estimated

03339280 PRAIRIE CREEK NEAR LEBANON, IN—Continued



## 03339500 SUGAR CREEK AT CRAWFORDSVILLE, IN

LOCATION.--Lat 40°02'56", long 86°53'58", in SW<sup>1</sup>/<sub>4</sub>NW<sup>1</sup>/<sub>4</sub> sec.32, T.19 N., R.4 W., Montgomery County, Hydrologic Unit 05120110, (CRAWFORDSVILLE, IN quadrangle), on left bank 327 ft upstream from Crawfordsville Electric Light and Power Co.'s dam at Crawfordsville, 700 ft upstream from bridge on U.S. Highway 231, 1.0 mi downstream from Walnut Fork Sugar Creek, and at mile 40.4.

DRAINAGE AREA.--509 mi<sup>2</sup>.

PERIOD OF RECORD.--June 1938 to current year.

REVISED RECORDS.--WSP 973: 1939(M), WSP 1275: Drainage area. WSP 1335: 1949.

GAGE.--Water-stage recorder. Datum of gage is 657.77 ft above National Geodetic Vertical Datum of 1929.

REMARKS.--Records good except for estimated daily discharges, which are poor.

EXTREMES OUTSIDE PERIOD OF RECORD.--Flood in March 1913 reached a stage of 17.3 ft from information by local resident, discharge, about 36,000 ft<sup>3</sup>/s.

DISCHARGE, CUBIC FEET PER SECOND  
WATER YEAR OCTOBER 2004 TO SEPTEMBER 2005  
DAILY MEAN VALUES

DAY	OCT	NOV	DEC	JAN	FEB	MAR	APR	MAY	JUN	JUL	AUG	SEP
1	22	54	1,150	693	e275	465	432	484	172	132	75	43
2	20	115	1,190	600	265	391	516	419	172	122	65	40
3	22	122	807	2,840	254	343	550	373	181	93	59	35
4	22	111	574	5,400	249	340	442	330	178	78	56	31
5	e20	99	447	7,300	281	356	388	297	170	83	59	29
6	e19	82	377	10,800	462	334	347	279	189	70	63	26
7	e19	73	1,040	6,020	812	343	321	275	202	63	61	25
8	e18	64	2,060	2,450	1,960	346	309	314	170	56	56	28
9	e17	56	1,220	1,740	1,860	296	280	288	151	53	49	27
10	e17	53	859	1,620	1,400	274	260	261	138	49	44	24
11	e17	60	677	3,240	1,080	287	249	252	137	44	43	23
12	e18	72	617	10,700	951	290	251	387	145	53	42	23
13	38	85	519	11,200	1,030	261	283	341	964	58	72	22
14	36	73	381	9,760	2,800	229	279	400	1,360	68	68	22
15	44	67	292	3,910	2,570	214	246	524	856	62	62	23
16	39	63	263	2,010	2,320	207	221	419	533	74	58	29
17	38	59	241	1,410	1,940	208	211	326	369	218	56	33
18	53	58	216	1,040	1,240	212	208	282	283	217	49	35
19	66	62	e195	e900	930	215	206	316	230	136	46	34
20	65	63	e140	e600	795	215	203	1,180	194	93	40	50
21	49	66	e128	e480	816	200	241	849	169	177	39	73
22	42	61	e118	e400	791	200	1,390	561	156	997	35	50
23	40	64	e108	e360	686	229	1,910	443	139	834	33	e44
24	39	109	e107	e350	622	239	1,430	362	124	400	32	e41
25	40	692	e106	e340	564	312	1,010	298	115	229	31	48
26	41	629	e105	e330	507	729	803	264	106	156	30	240
27	40	481	e104	e300	453	701	856	243	97	154	38	425
28	38	802	e103	e280	466	561	779	227	94	178	34	229
29	39	684	e102	e320	---	466	629	212	103	151	37	213
30	43	523	178	e300	---	383	556	198	138	110	34	254
31	42	---	453	e290	---	456	---	184	---	88	37	---
TOTAL	1,063	5,602	14,877	87,983	28,379	10,302	15,806	11,588	8,035	5,296	1,503	2,219
MEAN	34.3	187	480	2,838	1,014	332	527	374	268	171	48.5	74.0
MAX	66	802	2,060	11,200	2,800	729	1,910	1,180	1,360	997	75	425
MIN	17	53	102	280	249	200	203	184	94	44	30	22
CFSM	0.07	0.37	0.94	5.58	1.99	0.65	1.04	0.73	0.53	0.34	0.10	0.15
IN.	0.08	0.41	1.09	6.43	2.07	0.75	1.16	0.85	0.59	0.39	0.11	0.16

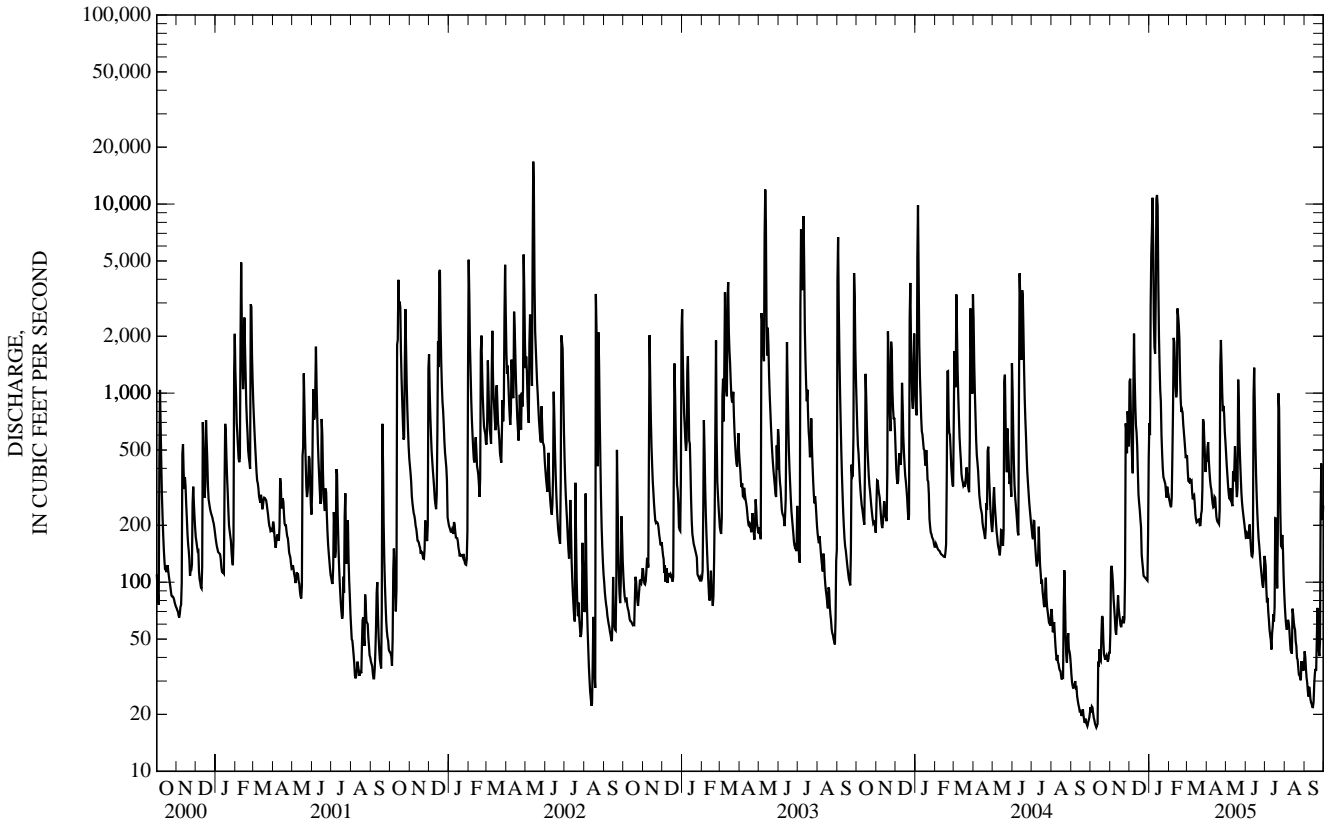
STATISTICS OF MONTHLY MEAN DATA FOR WATER YEARS 1939 - 2005, BY WATER YEAR (WY)

MEAN	160	340	483	649	713	873	833	695	579	325	163	165
MAX	1,098	3,060	2,084	4,163	2,229	2,390	2,592	3,297	2,648	1,719	1,801	1,991
(WY)	(1978)	(1993)	(1991)	(1950)	(1985)	(1978)	(1964)	(1943)	(1957)	(2003)	(1958)	(1989)
MIN	13.1	23.5	17.0	17.1	68.4	79.2	67.1	74.9	32.5	16.6	8.42	4.80
(WY)	(1964)	(1998)	(1964)	(1977)	(1964)	(1941)	(2000)	(1941)	(1988)	(1988)	(1941)	(1941)

03339500 SUGAR CREEK AT CRAWFORDSVILLE, IN—Continued

SUMMARY STATISTICS	FOR 2004 CALENDAR YEAR		FOR 2005 WATER YEAR		WATER YEARS 1939 - 2005	
ANNUAL TOTAL	156,130		192,653			
ANNUAL MEAN	427		528		497	
HIGHEST ANNUAL MEAN					1,086	1950
LOWEST ANNUAL MEAN					65.0	1941
HIGHEST DAILY MEAN	9,860	Jan 5	11,200	Jan 13	20,100	Jun 29, 1957
LOWEST DAILY MEAN	17	Sep 26	17	Oct 9	2.4	Sep 24, 1941
ANNUAL SEVEN-DAY MINIMUM	18	Oct 6	18	Oct 6	2.7	Sep 21, 1941
MAXIMUM PEAK FLOW			11,600	Jan 12	26,300	Jun 28, 1957
MAXIMUM PEAK STAGE			8.98	Jan 12	14.48	Jun 28, 1957
ANNUAL RUNOFF (CFSM)	0.838		1.04		0.976	
ANNUAL RUNOFF (INCHES)	11.41		14.08		13.26	
10 PERCENT EXCEEDS	1,020		1,020		1,160	
50 PERCENT EXCEEDS	173		212		180	
90 PERCENT EXCEEDS	28		36		28	

e Estimated



## 03340500 WABASH RIVER AT MONTEZUMA, IN

LOCATION.--Lat 39°47'33", long 87°22'26", in SE<sup>1</sup>/<sub>4</sub>NE<sup>1</sup>/<sub>4</sub> sec.35, T.16 N., R.9 W., Parke County, Hydrologic Unit 05120108, (MONTEZUMA, IN quadrangle), on left bank 20 ft upstream from bridge on U.S. Highway 36 at Montezuma, 2.0 mi upstream from Big Raccoon Creek, 4.9 mi downstream from Sugar Creek, and at mile 240.0.

DRAINAGE AREA.--11,118 mi<sup>2</sup>.

PERIOD OF RECORD.--October 1927 to current year. July 1924 to September 1927 (gage height only) in reports of State of Indiana, Department of Natural Resources.

REVISED RECORDS.--WSP 1335: 1929, 1931(M). WSP 1505: 1954. WSP 1915: 1954(m). WSP 2109: Drainage area. WDR IN-74-1: 1973.

GAGE.--Water-stage recorder. Datum of gage is 457.75 ft above National Geodetic Vertical Datum of 1929 (levels by U.S. Army Corps of Engineers). Oct. 1, 1927, to July 12, 1950, nonrecording gage on downstream side of bridge located 50 ft upstream of present bridge and at same datum. July 12, 1950 to July 27, 1988, recording gage in downstream side of first pier from left bank at same datum.

REMARKS.--Records fair except for estimated daily discharges, which are poor. Flow partially regulated by upstream reservoirs.

EXTREMES OUTSIDE PERIOD OF RECORD.--Flood of March 27, 1913, reached a stage of 34.0 ft, from floodmarks, discharge, 230,000 ft<sup>3</sup>/s.

DISCHARGE, CUBIC FEET PER SECOND  
WATER YEAR OCTOBER 2004 TO SEPTEMBER 2005  
DAILY MEAN VALUES

DAY	OCT	NOV	DEC	JAN	FEB	MAR	APR	MAY	JUN	JUL	AUG	SEP
1	2,430	6,420	34,900	9,370	22,800	21,000	11,000	14,100	4,490	3,620	3,970	e1,720
2	2,320	7,470	38,000	11,400	22,200	19,400	9,840	12,700	4,310	3,750	3,370	e1,680
3	2,470	10,700	37,500	19,900	21,700	17,900	9,300	11,600	4,360	3,850	3,060	1,650
4	2,510	12,700	36,400	35,500	21,100	16,600	8,930	10,500	4,280	4,060	2,840	1,630
5	2,700	13,400	33,300	45,300	20,400	15,900	8,430	8,680	4,220	4,570	2,700	1,710
6	2,810	13,700	27,600	63,000	19,500	15,100	8,020	7,740	4,160	4,250	2,600	2,150
7	2,850	12,900	25,400	e75,200	19,700	15,200	7,930	7,080	4,140	3,780	2,540	1,920
8	2,640	11,000	33,000	e82,200	23,000	16,500	7,800	6,830	4,330	3,190	2,470	1,780
9	2,700	9,320	36,500	e79,400	28,000	16,500	7,330	6,650	5,420	2,830	2,430	1,690
10	2,600	7,950	38,100	e71,500	30,100	15,000	6,960	6,390	5,600	2,600	2,420	1,620
11	2,650	7,180	39,000	e65,300	30,800	13,400	6,620	6,130	5,040	2,400	2,320	1,560
12	2,620	6,900	37,100	e73,300	31,100	12,100	6,540	6,510	4,940	2,280	2,510	1,480
13	2,680	6,420	33,500	e90,100	31,000	11,100	6,650	6,520	6,020	2,370	2,640	1,440
14	2,770	5,750	29,200	e109,000	34,400	10,400	6,900	7,920	7,440	2,330	2,830	1,400
15	3,270	5,170	24,700	e125,000	41,900	9,750	6,710	8,160	11,200	2,400	3,180	1,410
16	2,970	5,030	19,700	e117,000	46,300	9,230	6,180	7,970	11,900	2,370	3,380	1,550
17	3,060	4,770	15,900	e100,000	49,900	9,000	5,790	7,770	10,600	2,620	3,460	1,690
18	2,900	4,820	13,600	e82,700	51,500	8,640	5,560	7,490	8,630	3,030	3,230	1,860
19	3,230	4,980	12,200	67,700	50,300	8,500	5,520	7,060	6,820	3,550	3,390	1,960
20	4,040	5,330	11,000	57,400	46,700	8,360	5,360	9,060	5,680	3,660	2,980	1,910
21	4,700	5,730	10,300	48,000	42,000	8,200	5,960	10,300	5,000	4,230	2,750	2,630
22	4,620	6,000	9,650	40,800	37,500	8,200	11,300	8,800	4,570	7,080	2,760	3,040
23	4,330	6,480	8,930	36,200	34,200	8,430	16,500	7,990	4,230	10,200	2,490	2,580
24	4,320	6,670	7,650	32,400	31,900	8,380	15,000	7,970	3,840	9,070	2,270	2,520
25	5,060	12,300	6,650	29,900	30,100	8,480	13,700	7,290	3,550	6,840	2,050	2,570
26	4,920	20,900	5,490	28,300	28,100	9,080	15,000	6,370	3,440	4,820	1,930	3,020
27	4,670	24,700	5,690	27,400	25,400	10,200	15,300	5,750	3,180	4,240	1,970	3,640
28	4,530	27,400	6,040	26,300	22,900	12,500	15,600	5,440	3,270	4,110	2,050	5,350
29	4,760	29,900	6,620	25,100	---	14,500	15,900	5,190	3,370	5,020	1,970	7,450
30	4,950	31,500	7,650	24,300	---	13,400	15,400	4,920	3,580	5,060	e1,880	9,160
31	5,680	---	10,600	23,600	---	11,900	---	4,600	---	4,590	e1,740	---
TOTAL	108,760	333,490	661,870	1,722,570	894,500	382,850	287,030	241,480	161,610	128,770	82,180	75,770
MEAN	3,508	11,120	21,350	55,570	31,950	12,350	9,568	7,790	5,387	4,154	2,651	2,526
MAX	5,680	31,500	39,000	125,000	51,500	21,000	16,500	14,100	11,900	10,200	3,970	9,160
MIN	2,320	4,770	5,490	9,370	19,500	8,200	5,360	4,600	3,180	2,280	1,740	1,400
CFM	0.32	1.00	1.92	5.00	2.87	1.11	0.86	0.70	0.48	0.37	0.24	0.23
IN.	0.36	1.12	2.21	5.76	2.99	1.28	0.96	0.81	0.54	0.43	0.27	0.25

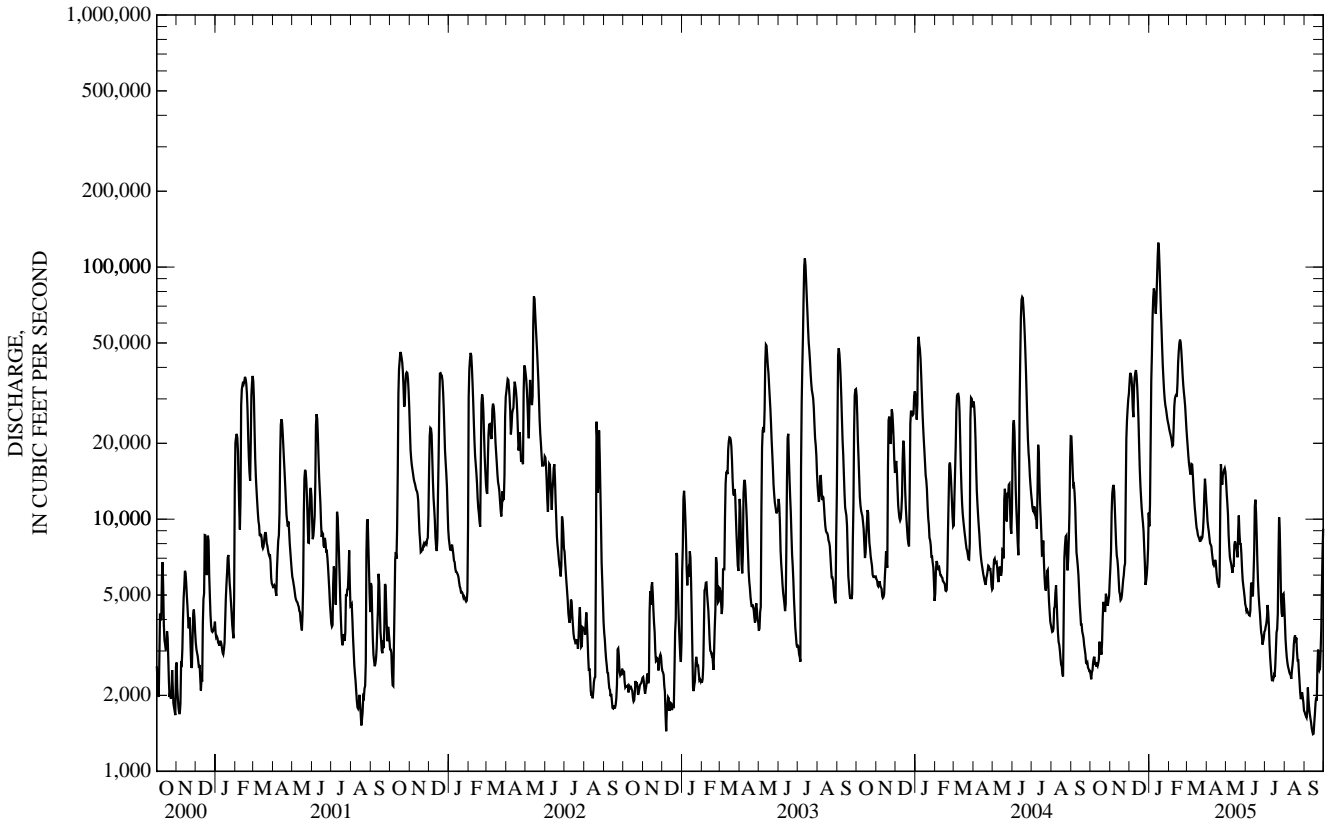
## STATISTICS OF MONTHLY MEAN DATA FOR WATER YEARS 1928 - 2005, BY WATER YEAR (WY)

MEAN	4,430	6,287	9,551	13,000	14,380	17,070	17,150	13,970	11,020	7,706	4,528	3,810
MAX	23,630	36,840	40,350	66,690	40,610	49,690	37,650	58,400	42,730	40,530	18,840	19,470
(WY)	(2002)	(1993)	(1928)	(1950)	(1959)	(1982)	(1938)	(1943)	(1958)	(2003)	(1958)	(2003)
MIN	973	1,202	1,041	1,107	1,789	2,370	4,781	2,082	1,357	1,210	815	710
(WY)	(1964)	(1965)	(1964)	(1977)	(1931)	(1941)	(2000)	(1934)	(1934)	(1934)	(1941)	(1941)

03340500 WABASH RIVER AT MONTEZUMA, IN—Continued

SUMMARY STATISTICS	FOR 2004 CALENDAR YEAR		FOR 2005 WATER YEAR		WATER YEARS 1928 - 2005	
ANNUAL TOTAL	4,713,580		5,080,880		10,220	
ANNUAL MEAN	12,880		13,920		20,290	
HIGHEST ANNUAL MEAN					2,506	
LOWEST ANNUAL MEAN					1931	
HIGHEST DAILY MEAN	76,100	Jun 16	125,000	Jan 15	182,000	May 20, 1943
LOWEST DAILY MEAN	2,320	Oct 2	1,400	Sep 14	571	Sep 24, 1941
ANNUAL SEVEN-DAY MINIMUM	2,470	Sep 28	1,490	Sep 10	600	Sep 23, 1941
MAXIMUM PEAK FLOW			130,000	Jan 15	184,000	May 20, 1943
MAXIMUM PEAK STAGE			31.97	Jan 15	32.83	May 20, 1943
ANNUAL RUNOFF (CF5M)	1.16		1.25		0.919	
ANNUAL RUNOFF (INCHES)	15.77		17.00		12.49	
10 PERCENT EXCEEDS	30,100		34,600		25,100	
50 PERCENT EXCEEDS	7,750		6,840		5,750	
90 PERCENT EXCEEDS	3,260		2,410		1,740	

e Estimated





## 03340800 BIG RACCOON CREEK NEAR FINCASTLE, IN

LOCATION.--Lat 39°48'45", long 86°57'14", in NW<sup>1</sup>/<sub>4</sub>SW<sup>1</sup>/<sub>4</sub> sec.22, T.16 N., R.5 W., Putnam County, Hydrologic Unit 05120108, (RUSSELLVILLE, IN quadrangle), on left bank at downstream side of county road bridge, 1.6 mi upstream from Ramp Creek, 3.1 mi west of Fincastle, and at mile 48.8.

DRAINAGE AREA.--139 mi<sup>2</sup>.

PERIOD OF RECORD.--August 1957 to current year. Prior to October 1963, published as Raccoon Creek near Fincastle.

REVISED RECORDS.--WSP 1909: 1958. WSP 2109: Drainage area. WDR IN-79-1: 1978.

GAGE.--Water-stage recorder. Datum of gage is 686.03 ft above National Geodetic Vertical Datum of 1929.

REMARKS.--Records fair except for estimated daily discharges, which are poor.

EXTREMES OUTSIDE PERIOD OF RECORD.--Flood of June 28, 1957, reached a stage of 19.10 ft discharge, 39,900 ft<sup>3</sup>/s, from slope-area measurement.

DISCHARGE, CUBIC FEET PER SECOND  
WATER YEAR OCTOBER 2004 TO SEPTEMBER 2005  
DAILY MEAN VALUES

DAY	OCT	NOV	DEC	JAN	FEB	MAR	APR	MAY	JUN	JUL	AUG	SEP
1	1.7	e6.4	329	124	67	117	88	180	44	22	23	5.0
2	2.0	11	280	164	64	97	93	153	44	19	20	3.9
3	2.4	8.4	159	1,840	62	88	109	134	48	17	18	3.2
4	2.3	9.4	110	4,100	61	87	94	117	47	15	16	2.8
5	2.2	8.1	81	3,440	65	88	84	103	43	14	16	2.4
6	e2.1	e7.2	67	4,200	88	80	74	96	51	13	15	2.1
7	e1.9	e5.8	389	1,120	158	81	72	93	42	12	14	1.8
8	e1.9	e4.9	589	637	494	80	72	89	36	11	13	1.6
9	e1.8	4.5	305	496	443	67	61	97	33	9.7	11	1.6
10	e1.8	3.9	215	543	346	63	57	83	31	8.2	11	1.6
11	e1.7	4.7	164	1,260	255	68	55	77	29	7.4	12	1.5
12	e1.7	7.4	135	2,910	230	68	57	83	37	8.8	12	1.3
13	3.2	9.8	116	2,290	246	60	67	99	627	9.6	11	e1.1
14	3.0	9.9	90	2,150	920	52	86	354	397	10	8.9	1.0
15	4.0	7.8	75	676	643	49	70	254	233	11	8.6	1.3
16	4.3	6.6	72	439	825	47	59	159	143	13	8.6	1.6
17	3.9	6.5	68	315	557	48	53	118	100	167	8.4	e1.5
18	5.9	6.2	62	259	333	48	51	97	80	89	7.6	e1.4
19	6.5	7.3	59	237	243	48	49	95	63	45	8.0	1.8
20	7.6	7.2	54	188	211	47	48	446	53	28	6.9	3.9
21	6.2	6.5	e47	159	212	42	61	273	48	464	5.9	2.8
22	5.3	6.4	e42	143	192	41	1,860	175	43	673	5.6	e2.2
23	e5.0	6.1	e42	115	168	53	1,380	138	39	310	4.6	e2.1
24	6.2	14	e41	e98	156	53	717	107	35	138	4.1	e2.0
25	6.0	202	e40	e93	142	53	451	88	31	80	3.7	4.8
26	5.5	127	e39	e92	129	76	350	79	28	53	3.8	33
27	5.6	91	e38	e82	114	86	424	70	27	48	6.4	65
28	5.6	242	e39	e75	120	81	318	63	27	49	6.7	36
29	6.4	146	e40	e70	---	73	250	57	26	39	4.4	27
30	7.4	104	47	e74	---	62	216	52	29	32	4.7	34
31	e6.8	---	93	e70	---	90	---	49	---	27	5.5	---
TOTAL	127.9	1,088.0	3,927	28,459	7,544	2,093	7,426	4,078	2,514	2,442.7	304.4	251.3
MEAN	4.13	36.3	127	918	269	67.5	248	132	83.8	78.8	9.82	8.38
MAX	7.6	242	589	4,200	920	117	1,860	446	627	673	23	65
MIN	1.7	3.9	38	70	61	41	48	49	26	7.4	3.7	1.0
CFSM	0.03	0.26	0.91	6.60	1.94	0.49	1.78	0.95	0.60	0.57	0.07	0.06
IN.	0.03	0.29	1.05	7.62	2.02	0.56	1.99	1.09	0.67	0.65	0.08	0.07

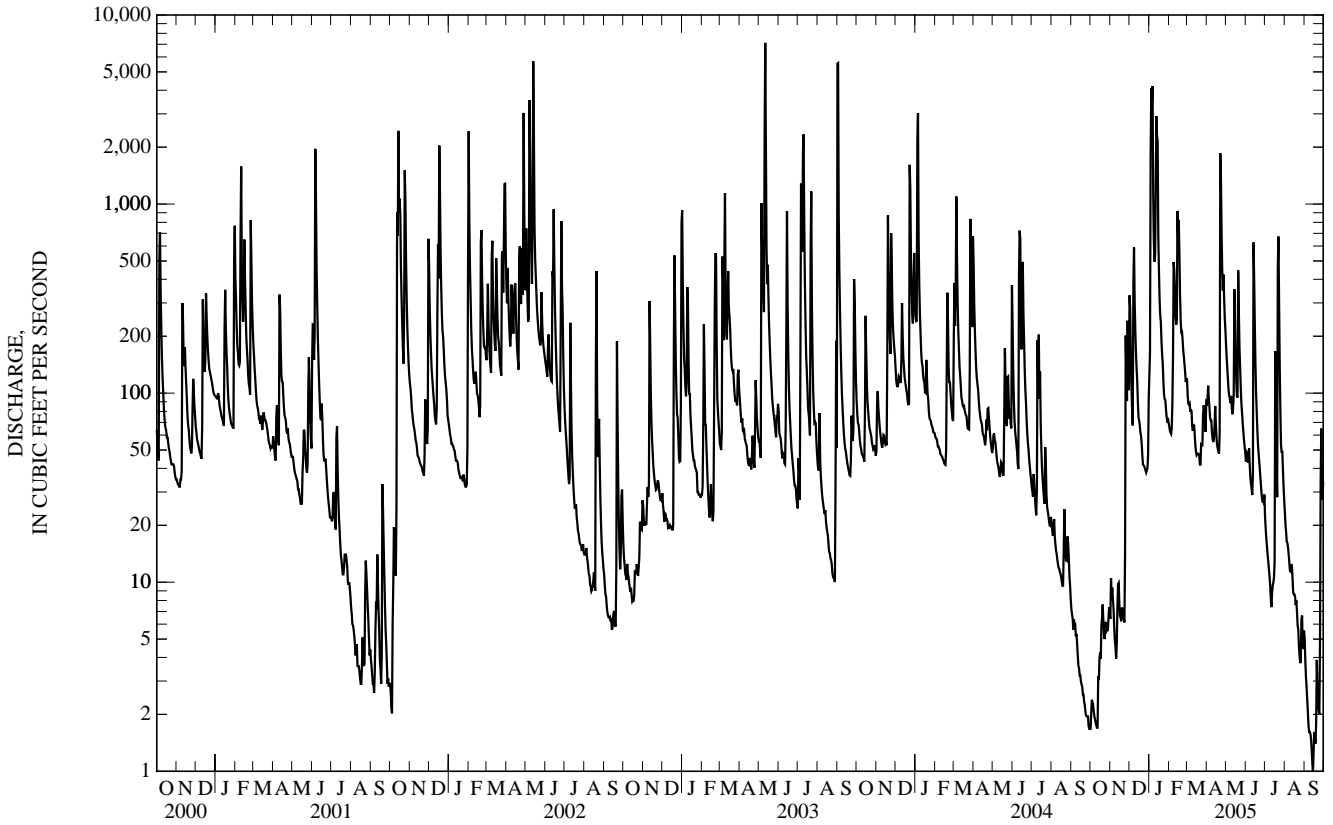
STATISTICS OF MONTHLY MEAN DATA FOR WATER YEARS 1958 - 2005, BY WATER YEAR (WY)

MEAN	54.8	123	180	183	201	249	216	194	129	95.3	45.5	48.3
MAX	406	844	913	918	694	683	730	811	614	430	268	545
(WY)	(2002)	(1993)	(1991)	(2005)	(1985)	(1978)	(1964)	(1996)	(1998)	(1979)	(1979)	(1989)
MIN	2.14	2.33	3.91	4.41	14.8	28.6	40.7	19.5	11.1	4.83	2.75	1.62
(WY)	(1998)	(2000)	(1998)	(2000)	(1998)	(1981)	(2000)	(1976)	(1988)	(1991)	(1991)	(1999)

03340800 BIG RACCOON CREEK NEAR FINCASTLE, IN—Continued

SUMMARY STATISTICS	FOR 2004 CALENDAR YEAR		FOR 2005 WATER YEAR		WATER YEARS 1958 - 2005	
ANNUAL TOTAL	37,135.7		60,255.3		143	
ANNUAL MEAN	101		165		292	
HIGHEST ANNUAL MEAN					1974	
LOWEST ANNUAL MEAN					38.5	
HIGHEST DAILY MEAN	3,030	Jan 5	4,200	Jan 6	12,200	Dec 30, 1990
LOWEST DAILY MEAN	1.7	Sep 28	1.0	Sep 14	1.0	Oct 11, 1988
ANNUAL SEVEN-DAY MINIMUM	1.8	Sep 25	1.3	Sep 12	1.1	Oct 6, 1988
MAXIMUM PEAK FLOW			5,650	Jan 4	16,000	Dec 30, 1990
MAXIMUM PEAK STAGE			12.98	Jan 4	16.35	Sep 1, 2003
ANNUAL RUNOFF (CFSM)	0.730		1.19		1.03	
ANNUAL RUNOFF (INCHES)	9.94		16.13		13.98	
10 PERCENT EXCEEDS	229		331		299	
50 PERCENT EXCEEDS	51		52		53	
90 PERCENT EXCEEDS	4.1		3.8		6.3	

e Estimated





03340900 BIG RACCOON CREEK AT FERNDALE, IN—Continued

## WATER-QUALITY RECORDS

INSTRUMENTATION.--Temperature recorder.

PERIOD OF RECORD.--

WATER TEMPERATURE.--September 1987 to April 1993. September 1994 to current year.

EXTREMES FOR PERIOD OF DAILY RECORD.--

WATER TEMPERATURE: Maximum, 26.3°C, Aug. 22, 1998; minimum, -0.3°C, Jan. 30 - 31, 1996.

EXTREMES FOR CURRENT YEAR.--

WATER TEMPERATURE: Maximum, 23.6°C, Sept. 27, minimum, 1.7°C, Dec. 24 - 25.

TEMPERATURE, WATER, DEGREES CELSIUS  
WATER YEAR OCTOBER 2004 TO SEPTEMBER 2005

DAY	OCTOBER			NOVEMBER			DECEMBER			JANUARY		
	MAX	MIN	MEAN	MAX	MIN	MEAN	MAX	MIN	MEAN	MAX	MIN	MEAN
1	22.4	19.3	20.6	16.2	16.1	16.1	8.9	8.3	8.6	3.6	3.3	3.5
2	22.4	19.0	20.5	16.3	16.0	16.2	8.4	8.1	8.3	3.7	3.4	3.6
3	22.3	18.2	19.7	16.0	15.7	15.8	8.1	7.7	7.9	5.3	3.7	4.3
4	22.1	18.5	19.7	15.7	15.1	15.5	7.7	7.4	7.5	---	---	---
5	21.7	17.8	19.2	15.1	14.8	15.0	7.5	7.3	7.4	---	---	---
6	21.5	17.4	19.0	14.8	14.5	14.6	7.5	7.2	7.3	6.7	6.2	6.4
7	21.4	17.7	19.2	14.9	14.3	14.6	7.8	6.9	7.4	6.3	6.0	6.2
8	19.8	19.0	19.4	14.5	14.1	14.3	8.0	7.7	7.8	6.1	5.8	6.0
9	20.2	18.2	19.5	14.1	13.7	13.9	7.9	7.7	7.8	6.1	5.7	5.9
10	20.9	17.5	18.7	13.7	13.4	13.6	8.2	7.9	8.0	6.0	5.8	5.9
11	19.4	17.5	18.3	13.4	13.1	13.3	8.2	7.8	8.0	6.2	5.9	6.0
12	18.8	17.5	18.0	13.1	12.5	12.8	7.9	7.7	7.8	6.3	6.1	6.2
13	18.2	17.7	17.9	12.5	12.0	12.3	7.7	6.8	7.2	6.5	6.2	6.3
14	18.2	17.0	17.5	12.0	11.5	11.9	6.8	6.2	6.5	6.2	5.6	5.9
15	17.2	16.6	16.9	11.6	11.3	11.5	6.2	5.9	6.1	5.8	5.3	5.5
16	17.9	16.0	17.1	11.3	11.1	11.2	5.9	5.6	5.8	5.3	4.8	5.1
17	17.4	16.9	17.3	11.2	11.0	11.1	5.6	5.3	5.5	5.1	4.4	4.7
18	16.9	16.5	16.7	11.4	11.1	11.2	6.7	5.2	5.8	4.9	4.2	4.5
19	16.5	16.3	16.4	11.4	11.1	11.3	5.5	3.5	4.4	4.7	4.5	4.7
20	16.3	16.1	16.2	11.8	11.2	11.4	4.3	3.3	3.7	4.5	4.3	4.5
21	16.2	16.0	16.1	11.8	11.6	11.7	4.2	3.6	3.9	4.3	4.1	4.2
22	16.0	15.8	15.9	12.5	11.3	11.6	3.6	2.2	3.1	4.2	3.6	4.0
23	15.8	15.5	15.6	12.3	11.4	11.6	2.5	1.9	2.2	3.6	3.4	3.5
24	16.0	15.6	15.7	12.0	10.1	11.4	3.8	1.7	2.3	3.8	3.5	3.7
25	15.9	15.5	15.7	10.9	9.9	10.4	2.3	1.7	2.0	3.9	3.7	3.8
26	15.8	15.6	15.7	10.7	10.2	10.5	3.1	2.1	2.4	3.8	3.5	3.7
27	15.9	15.7	15.8	10.2	9.8	10.0	3.1	1.9	2.3	3.6	3.4	3.5
28	15.8	15.7	15.8	9.9	9.5	9.7	3.4	2.2	2.6	3.4	3.3	3.4
29	15.8	15.6	15.7	9.5	9.2	9.4	3.2	2.6	2.9	3.3	3.1	3.2
30	16.2	15.6	15.9	9.2	8.9	9.0	3.5	2.6	3.0	3.2	3.0	3.1
31	16.2	16.0	16.1	---	---	---	3.7	3.3	3.4	3.2	3.1	3.1
MONTH	22.4	15.5	17.5	16.3	8.9	12.4	8.9	1.7	5.4	6.7	3.0	4.6

