

**CRUSTACEA: KEY TO SOME MAJOR ORDERS**

**Chester J. Stojanovich and Harold George Scott**

- 1. With abdominal appendages (Fig. 1 A).....2
- Without abdominal appendages (Fig. 1 B).....7

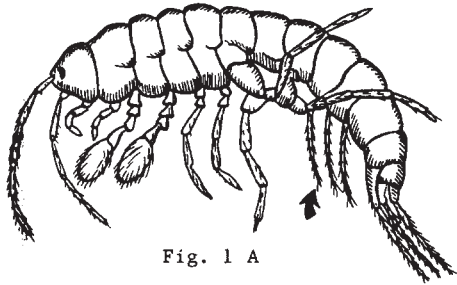


Fig. 1 A



Fig. 1 B

- Carapace present (Fig. 2 A).....3
- Carapace absent (Fig. 2 B).....6

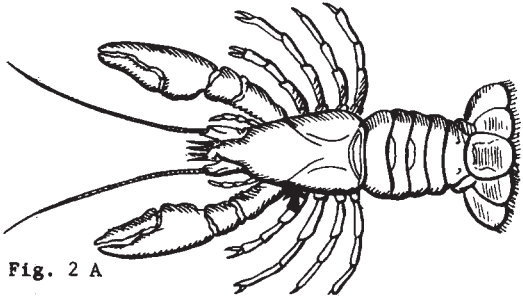


Fig. 2 A

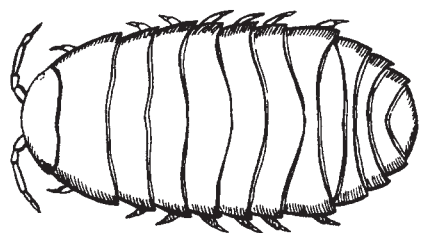


Fig. 2 B

- 3. With dorsal shield (Fig. 3 A). SHIELD SHRIMP..... Order NOTOSTRACA
- Without dorsal shield (Fig. 3 B).....4

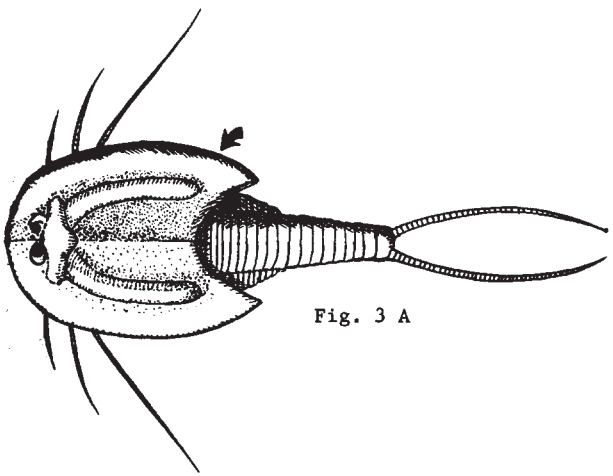


Fig. 3 A

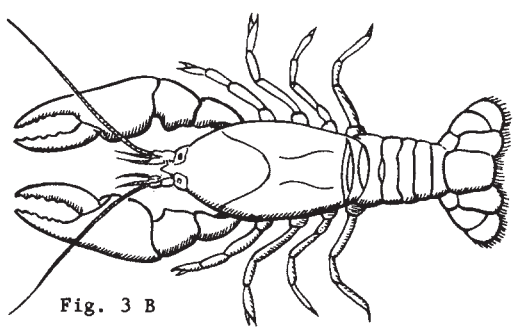
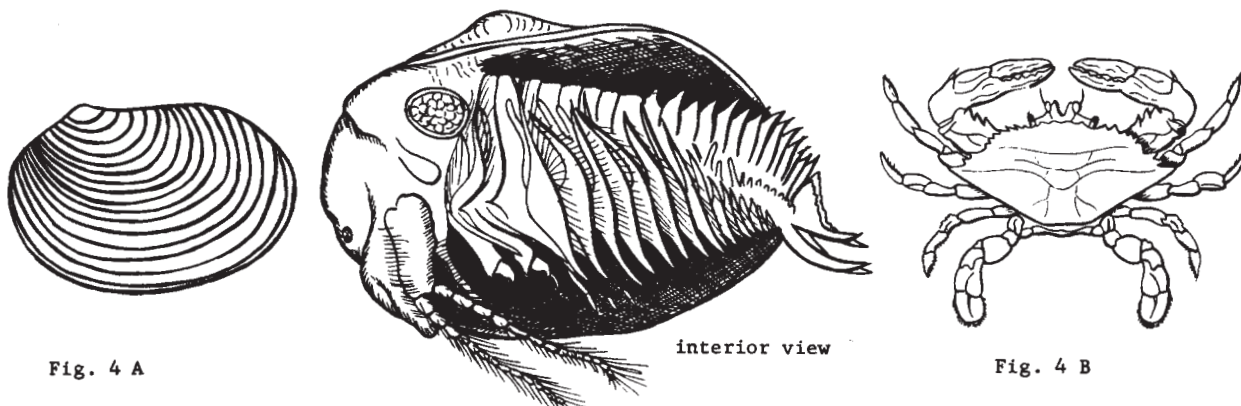
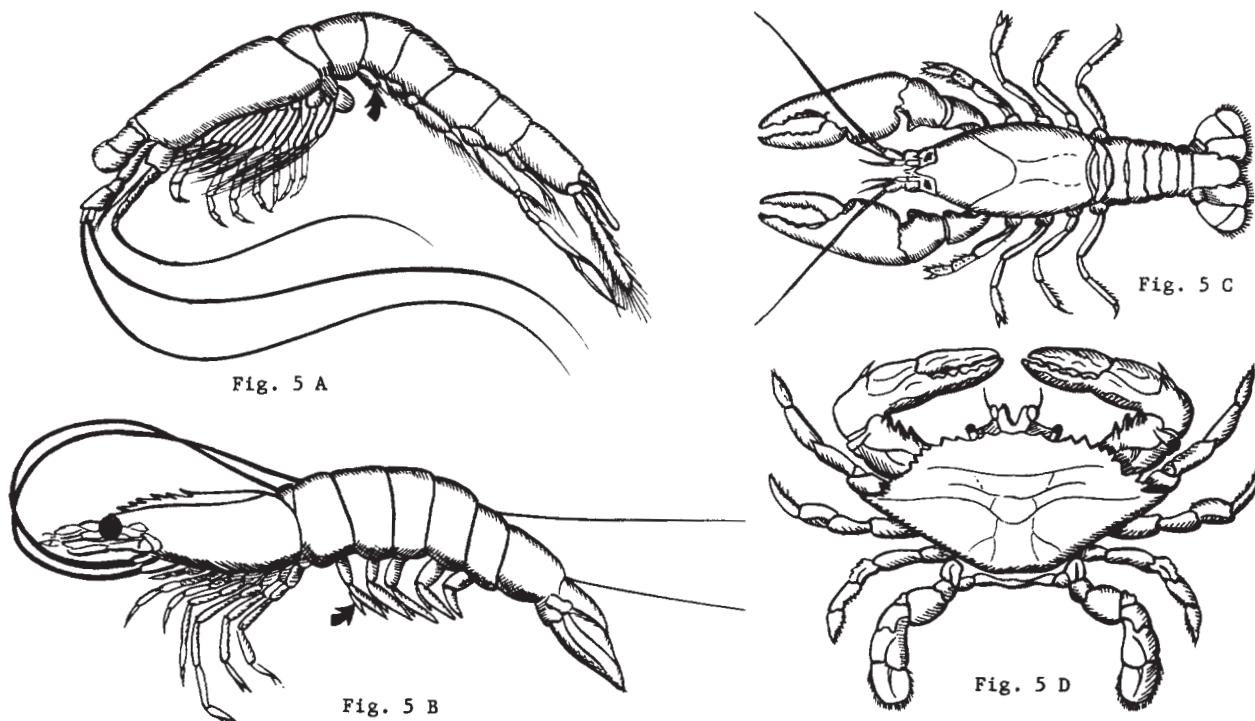


Fig. 3 B

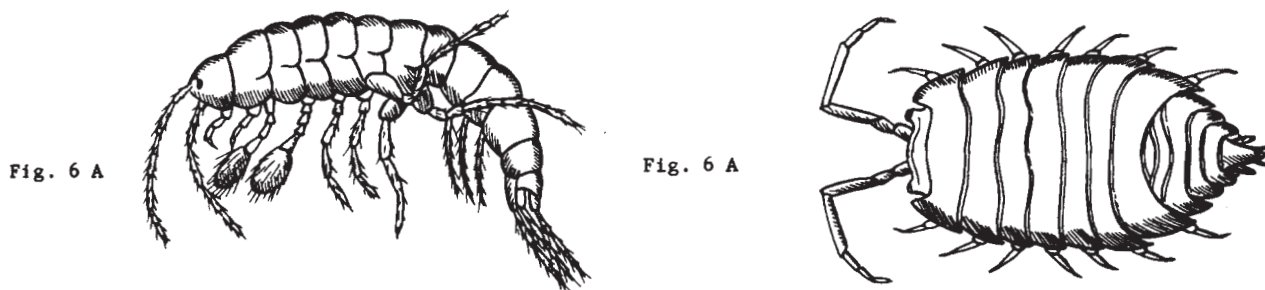
4. With bivalve shell (Fig. 4 A). SHELL SHRIMP.....Order CONCHOSTRACA  
 Without bivalve shell (Fig. 4 B).....5



5. First pleopod rudimentary (Fig. 5 A). OPOSSUM SHRIMP.....Order MYSIDACEA  
 First pleopod well-developed (Fig. 5 B, C & D). SHRIMP, CRAYFISH, LOBSTERS, CRABS.....  
 .....Order DECAPODA



6. Body laterally compressed (Fig. 6 A). SAND FLEAS, ETC..... Order AMPHIPODA  
 Body dorso-ventrally compressed (Fig. 6 B). SOWBUGS, PILLBUGS, ETC.....Order ISOPODA



7. Body not completely enclosed in a bivalve shell (Fig. 7 A).....8  
 Body completely enclosed in a bivalve shell (Fig. 7 B). OSTRACODS..... Order PODOCOPA

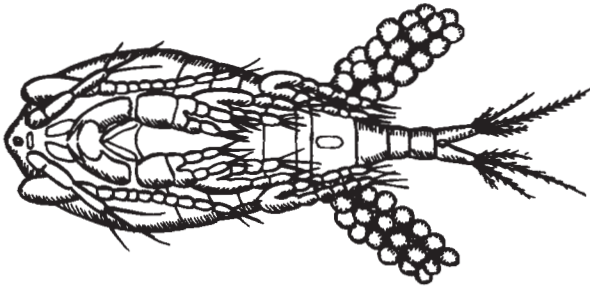


Fig. 7 A

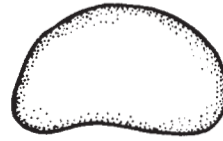
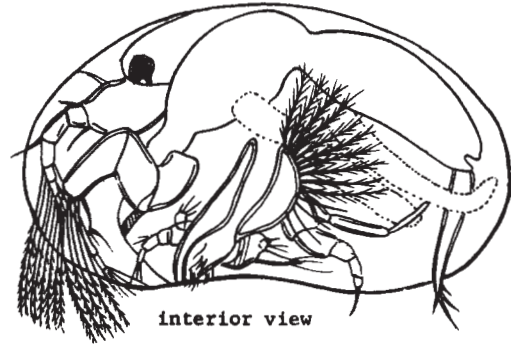


Fig. 7 B



interior view

8. Body segmented (Fig. 8 A)..... 9  
 Body not segmented (Fig. 8 B). WATER FLEAS..... Order CLADOCERA

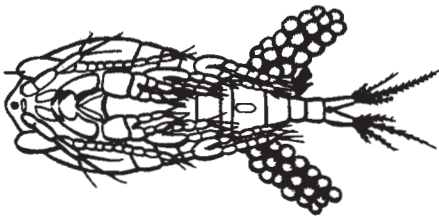


Fig. 8 A

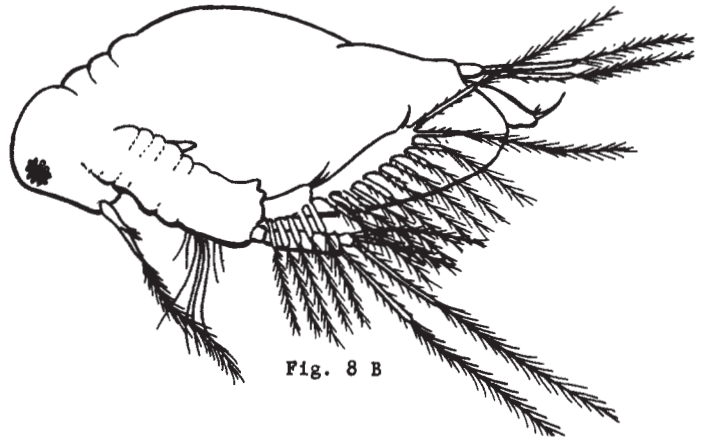


Fig. 8 B

9. Eyes stalked (Fig. 9 A). FAIRY SHRIMP..... Order ANOSTRACA  
 Eyes not stalked (Fig. 9 B). COPEPODS..... Order EUCOPEPODA

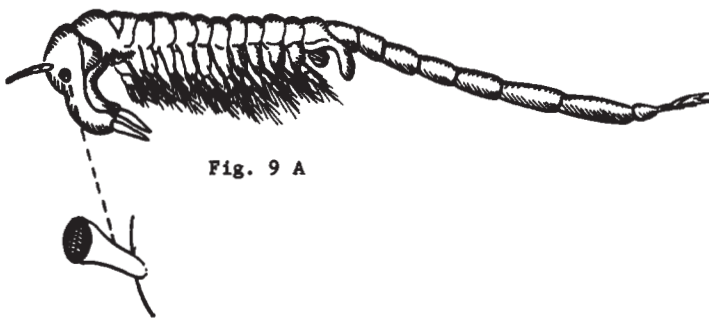


Fig. 9 A

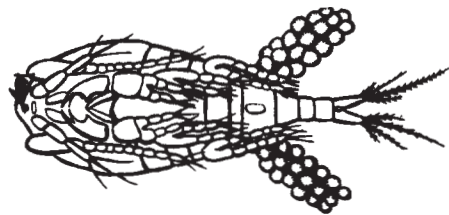


Fig. 9 B