



The Dryline

Serving the Texas & Oklahoma Panhandles Since 1892

Business Connection Attracts 9000 People



The 2005 Business Connection was sponsored by the Amarillo Chamber of Commerce. Over 9000 participants took part in this year's event. Weather conditions have a major impact on many businesses and the overall economy. It is important for business owners to know what services are available from their National Weather Service. In the photo on the left, WCM Steve Drillette and HMT Steve Bilodeau operate the NWS booth at this year's event.

Climate Trivia Did You Know

The record high temperature for August is 106 degrees set on August 3rd, 1944.

The record low temperature for August is 48 degrees set on August 30th, 1915.

The record precipitation for August is 7.55 inches set in 1974.



In this Issue...



1. [Spotter Picnic... Thank-You!](#)
2. [Miami Hail & June 11th Tornadoes](#)
3. [Recap -Lightning Awareness](#)
4. [Cooperative Observer Photos](#)
5. [Summer Heat](#)
6. [Summer Outlook](#)
7. [In Your Community](#)



Thank-You Storm Spotters!
...Appreciation Picnic Saturday August 13th...



The staff at the Amarillo National Weather Service conducted over 40 Skywarn training sessions across the Texas and Oklahoma Panhandles and trained more than 1000 people. The Amarillo NWS is fortunate to have over 1200 trained storm spotters. These spotters voluntarily work to protect their communities and provide valuable ground truth severe weather reports to the Amarillo NWS. The reports are an integral part of the warning process. NWS Storm spotters include local amateur radio operators, co-op observers, emergency management officials, local fire departments, local law enforcement, storm chasers, as well as members of the general public. "We cannot overstate the importance of spotters and their role in the warning process" commented Steve Drillette, Amarillo NWS Warning Coordination Meteorologist.

A complimentary Appreciation Picnic will be held on **Saturday, August 13th, 2005 from 11 am until 2 pm at the Amarillo NWS.** All spotters and their families are encouraged to attend. Last year, approximately 100 people attended the event which included spotters, observers, emergency managers, other NWS partners, and Amarillo NWS staff.



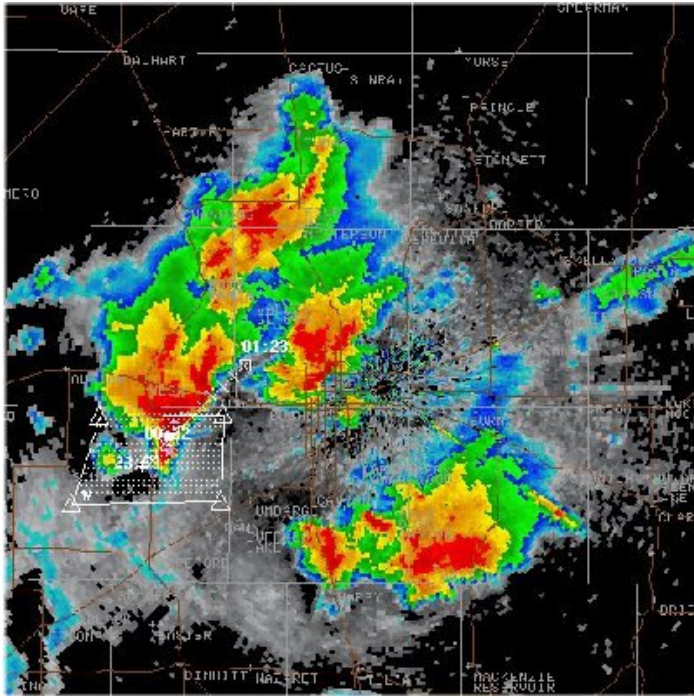
Spotter Picnic August 2004

Many thanks to our sponsors this year. All of the Wal-Marts in Amarillo and Canyon have joined to sponsor this event for the past 3 years. All of the food and most of the door prizes will be donated by Wal-Mart. This year the menu will consist of Wal-Mart's delicious fried chicken, chips, cookies, watermelon and soft drinks. "Wal-Mart's sponsorship is just terrific!" said Warning Coordination Meteorologist Steve Drillette. "The success of the event would not be possible without their generous support."

The appreciation picnic is just one way the NWS in Amarillo would like to recognize our volunteers, partners, and valued customers. Once again, Patrick Robertson of Kool 99.3 KEFH-FM radio station in Clarendon will provide music during the picnic. Patrick will provide rock & roll music from the 50s through the 80s and a mix of country music classics. For more information, call 806-335-1121.

[Amarillo's Homepage](#) [Dryline](#) [Page 3](#) [Page 4](#) [Page 5](#) [Page 6](#)

The National Weather Service 1900 English Rd. Amarillo Texas 79108 -- Ph (806) 335-1121



June 11th 2005 at 726 pm CDT

...June 11th 2005...

Tornadoes and large hail visited the central Texas panhandle during the evening of June 11th 2005. Several tornado and severe thunderstorm warnings were issued by the NWS in Amarillo. At left, 1/2 degree reflectivity from the Amarillo Doppler clearly show 4 super cell thunderstorms across Moore, Oldham, Potter, Deafsmith, Randall and Armstrong counties. Two tornadoes were reported over open country. These resulted in no injuries or damage. Numerous reports of large hail, up to baseball size were received by the NWS in Amarillo.

...April 20th 2005...

Typically, the largest hail falls during the spring when temperatures are cool enough so the hail does not melt before reaching the ground. Very large hailstones like the ones shown on the right must be supported by intense thunderstorm updrafts long enough for the hail to grow. Ultimately, the force of gravity pulls the hail back to the ground at speeds approaching 90 mph. The photo on the right shows the damaging hail stones that fell in Miami, Texas earlier this year.



Photo by Gary Noblett

TOPSCAN is Ready to Roll

The Texas & Oklahoma Panhandles Skywarn Cellular Area Network, better known as TOPSCAN, is ready for activation. TOPSCAN is a public spotter network which uses cell phones to relay severe weather information directly to the NWS in Amarillo.

Warning Coordination Meteorologist Steve Drillette is excited about the possibilities of TOPSCAN. “While our most reliable spotter network is our Amateur Radio spotters (or HAMS), we felt like taking advantage of the cell phone capability would compliment their efforts.”

TOPSCAN will work similar to how the HAMS operate. When activated local dispatchers will come to the NWS and direct spotters where to go. They will receive the reports and pass that information to the NWS Warning Forecasters. Anyone who is interested in severe storm spotting and has a cell phone can join TOPSCAN. Several local chapters around the panhandles are in the organizational stages. To join, or for more information on TOPSCAN call the contact closest to your location.

Area TOPSCAN Chapters and Primary Contacts

| | |
|---------------------|---|
| Amarillo & Canyon | Russell Amos, Todd Cason, James Mullins |
| Dalhart & Stratford | Greg Wright (806-366-2482, cell 806-753-7059) Kristine Olsen (806-249-8058, cell 806-570-0027) |
| Perryton | Garry Karber (806-435-7676), cell 806-202-0241) |
| Dumas | Carl Unlaub (935-2330) |
| Pampa | Lanora Ripple (806-655-0569 or cell 806-898-7861 |
| Lipscomb County | Bobbett Dourie (806-658-2264 or cell 806-664-1445 |



Highly branched staccato lightning

NWS Amarillo -Lightning Awareness Week –Recap

Held during the week of June 20th thru the 24th

Presentations...

1. Splash Water Park
2. Southwest City Pool
3. Ross Rogers Golf Course
4. Southeast City Pool
5. Comanche Trail Golf Course

For more lightning information and safety tips visit <http://www.lightningsafety.noaa.gov>

Photos of our CO-OP Observers



Darrell Sehorn and NWS MIC Jose Garcia

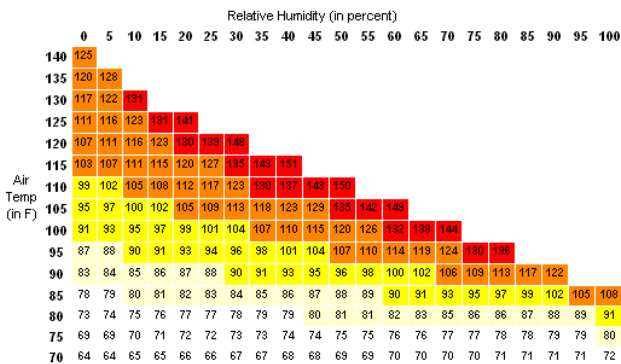


Betty & Jim Biggs receive a 10 year longevity award

Heat Index (Apparent Temperature) Chart

The **Heat Index (HI)** is the temperature the body feels when heat and humidity are combined. The chart below shows the HI that corresponds to the actual air temperature and relative humidity. (NOTE: This chart is based upon shady, light wind conditions. **Exposure to direct sunlight can increase the HI by up to 15°F.**)

(Due to the nature of the heat index calculation, the values in the tables below have an error of +/- 1.3F.)



| Heat Index | General Effect of Heat Index on People in Higher Risk Groups |
|--------------------------------|---|
| 80 to 89° - Very Warm | Fatigue possible with prolonged exposure and/or physical activity. |
| 90 to 104° - Hot | Sunstroke, heat cramps and heat exhaustion possible with prolonged exposure and/or physical activity. |
| 105 to 129° - Very Hot | Sunstroke, heat cramps or heat exhaustion likely, and heatstroke possible with prolonged exposure and/or physical activity. |
| 130° or higher - Extremely Hot | Heat/sunstroke highly likely with continued exposure. |

...Summer Heat Safety...

On average, about 175 Americans succumb to the taxing demands of heat every year. Our bodies dissipate heat by varying the rate and depth of blood circulation, by losing water through the skin and sweat glands, and as a last resort, by panting, when blood is heated above 98.6°F. Sweating cools the body through evaporation. However, high relative humidity retards evaporation, robbing the body of its ability to cool itself.

Click on the Heat Index table on the left to enlarge.

The **Heat Index (HI)** is the temperature the body feels when heat and humidity are combined. The chart on the left shows the HI that corresponds to the actual air temperature and relative humidity. (NOTE: This chart is based upon shady, light wind conditions. **Exposure to direct sunlight can increase the HI by up to 15°F.**)

Avoid overexposure and strenuous outdoor activities during the warm time of day. Drink plenty of cool water or other non-alcoholic beverages.

[Amarillo's Homepage](#) [Dryline](#) [Page 2](#) [Page 3](#) [Page 4](#) [Page 6](#)

The National Weather Service 1900 English Rd. Amarillo Texas 79108 -- Ph (806) 335-1121

In Your Community...

The National Weather Service in Amarillo has participated in numerous outreach events since our last Dryline issued in April. We would love to participate in an event **in Your Community!!**

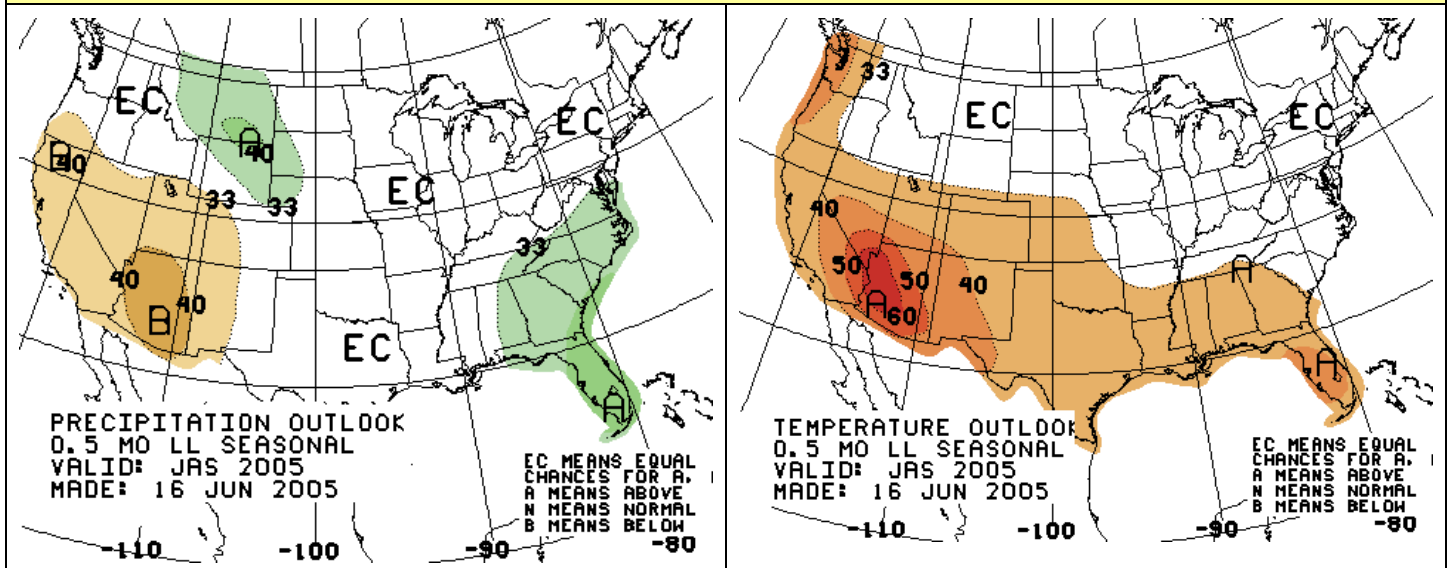
| | | |
|--------------------|---|---|
| Apr 16, 2005 | Generation 2000: A Kids Fair Amarillo, TX | NWS Amarillo took part in a hands-on kids fair at the Amarillo Civic center. |
| Apr 20, 2005 | Agrium Borger, TX | Warning Coordination Meteorologist Steve Drillette gave a severe weather safety presentation to the staff. |
| Apr 26, 2005 | Texas Master Naturalist Assoc. Amarillo, TX | WCM Steve Drillette gave a Climatology program to the TMNA at the Wildcat Bluff Nature Center. |
| Apr 27, 2005 | Highland Park HS Career Day Amarillo, TX | MIC Jose Garcia and Science Officer Rich Wynne participated at a local high school's Career Day activities. |
| Apr 28, 2005 | Health Fair Clarendon, TX | Steve Bilodeau staffed a booth and participated in the Community Health Fair at Clarendon College. |
| May 2, 2005 | Faith City Mission Amarillo, TX | WCM Steve Drillette assisted Faith City Mission with their tornado safety plan. |
| May 3, 2005 | Business Connection 2005 Amarillo, TX | NWS Amarillo staff participated in the annual Amarillo Chamber of Commerce BusinessConnection event at the Amarillo Civic Center. See photo |
| May 7, 2005 | Gardenfest Amarillo, TX | Sr. Forecaster Ken Schneider staffed a booth at the annual Gardenfest held on the Amarillo Botanical Gardens. |
| May 12, 2005 | Panhandle Water Utilities Commision - Amarillo, TX | Sr. Forecaster John Cockrell gave a severe weather presentation at the Big Texan restaurant. |
| May 20-21, 2005 | English Field Amarillo, TX | NWS Amarillo maintained a booth at the English Field museum during their annual air show. |
| May 24, 2005 | Emergency Mgr Regional Mtg. Dumas, TX | Steve Drillette and IT Officer Scott Plischke attended the EM meeting held at the Western Sizzlin restaurant. |
| June 4, 2005 | TOPSCAN Meeting Amarillo, TX | Steve Drillette attended the TOPSCAN meeting & picnic held at Memorial Park. |
| June 13, 2005 | Timbercreek Garden Club Amarillo, TX | Steve Drillette gave a basic severe storm spotters course to a local Garden Club. |

| | | |
|---------------|----------------------------------|--|
| June 16, 2005 | Civil Air Patrol Amarillo, TX | Steve Drillette gave a severe weather safety presentation to the Civil Air Patrol at the Rick Husband Airport. |
| June 18, 2005 | Business Expo Pampa, TX | Steve Drillette and Steve Bilodeau staffed a booth and participated in the annual Pampa Business Expo. |
| June 27, 2005 | Discovery Center Amarillo, TX | Steve Bilodeau gave a demonstration on the weather balloon to students attending the Extreme Science Program. |

...Upcoming Events...

| | | |
|-----------------|---|---|
| Aug 13, 2005 | Spotter & Cooperative Appreciation Picnic NWS - Amarillo, TX | All spotters, cooperative observers, and NWS partners are invited to the annual appreciation picnic. For more details call 335-1121 or visit www.srh.noaa.gov |
| Aug 22-25, 2005 | FEMA Course Oklahoma City, OK | WCM Steve Drillette will attend the FEMA Exercise Design Course with local Emergency Managers. |
| Sep 14-15, 2005 | Chamber BBQ Amarillo, TX | NWS Amarillo staff will participate in the annual Chamber of Commerce BBQ and cookoff. |

...2005 Summer Outlook...



[Amarillo's Homepage](#) [Dryline](#) [Page 2](#) [Page 3](#) [Page 4](#) [Page 5](#)

The National Weather Service 1900 English Rd. Amarillo Texas 79108 -- Ph (806) 335-1121