

Getting *Today at Berkeley Lab* through a Web Feed

(Mozilla Firefox and the Sage Extension)

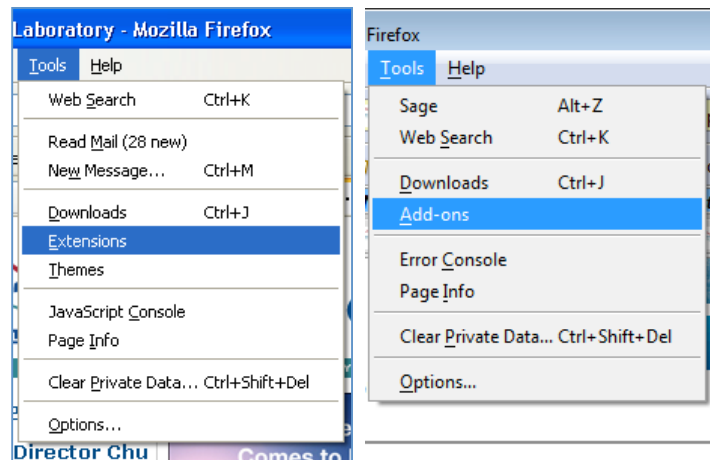
Today at Berkeley Lab now has a web feed (also known as an “RSS feed”) available. This means that you can subscribe to it and have it automatically show up in a Feed Reader. The instructions below will step you through the process of adding a Feed Reader called Sage to your Mozilla Firefox browser, and then adding the *Today at Berkeley Lab* web feed to Sage.

Firefox 1.5

Firefox 2.0

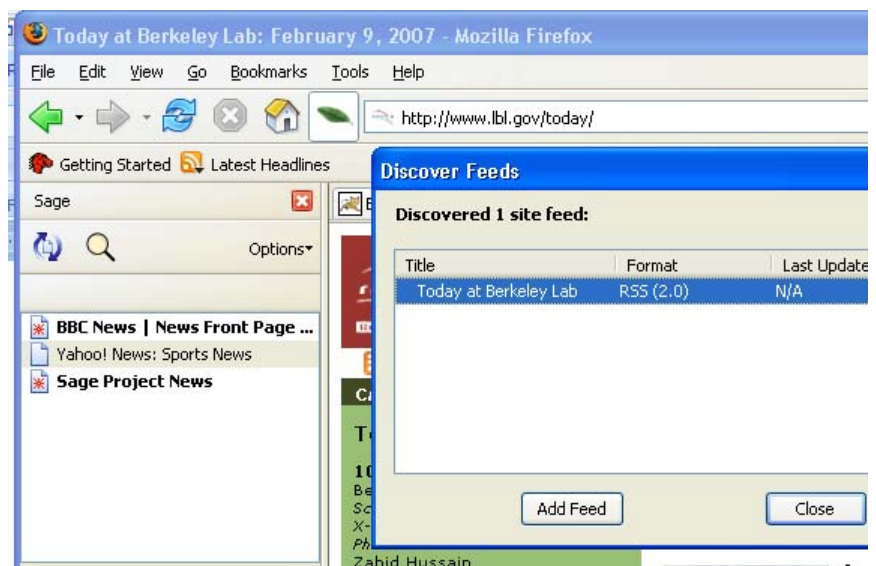
Adding the Sage extension to Mozilla Firefox

- 1) Open Mozilla Firefox and click on the Tools Menu, and then select either **Extensions** in Firefox 1.5 or **Add-ons** in Firefox 2.0.
- 2) Click on **Get More Extensions** (or **Get Extensions** in Firefox 2.0) in the lower-right corner of the Extensions/Add-ons box.
- 3) Click on “Recommended Add-ons” in the left menu and scroll down to find Sage.
- 4) Click on the “Install Now” button.
- 5) Click on the “Install Now” button that comes up in the next window.
- 6) Quit Mozilla Firefox and start it again. You’ll now see a Sage leaf just to the left of the address bar.



Adding the *Today at Berkeley Lab* web feed to Sage

- 1) Go to the Lab’s home page and click on *Today at Berkeley Lab*.
- 2) Click on the Sage leaf to open Sage.
- 3) Then either:
 - drag the feed icon (RSS icon) into the Sage window
- 4) Or:
 - In the Sage window,



click on the magnifying glass to discover feeds.

- A window will open up listing any feeds that are present on the web page you are viewing. Select *Today at Berkeley Lab* and click the “Add Feed” button, then Click “Close”.

You should now see *Today at Berkeley Lab* listed as one of your web feeds. If you click on the feed, you will see a list of the sections in the current issue, and if you hold the mouse over an item in the list you will see a short description of the article. Once you’ve added the feed, future issues of *Today at Berkeley Lab* will automatically be displayed in Sage.