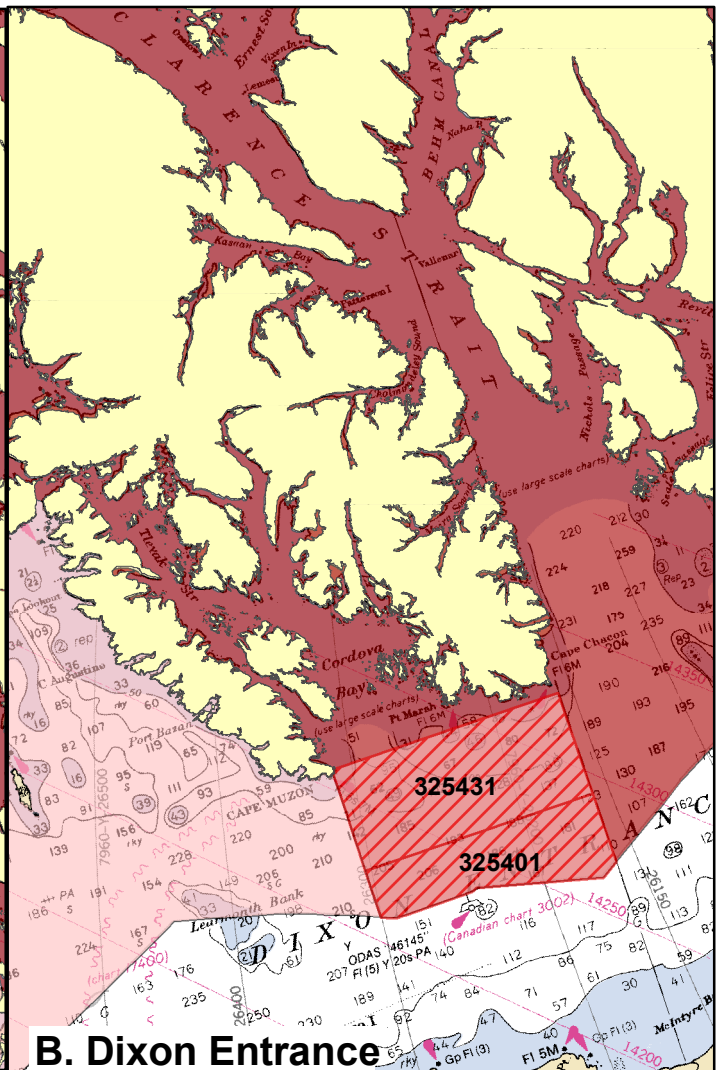
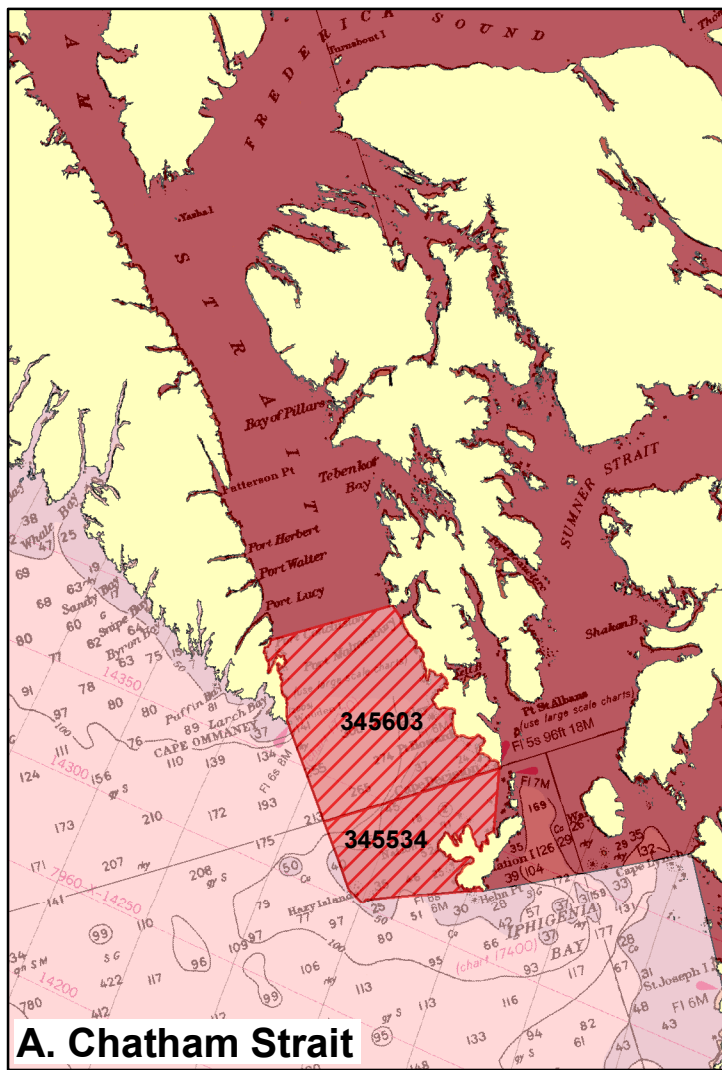
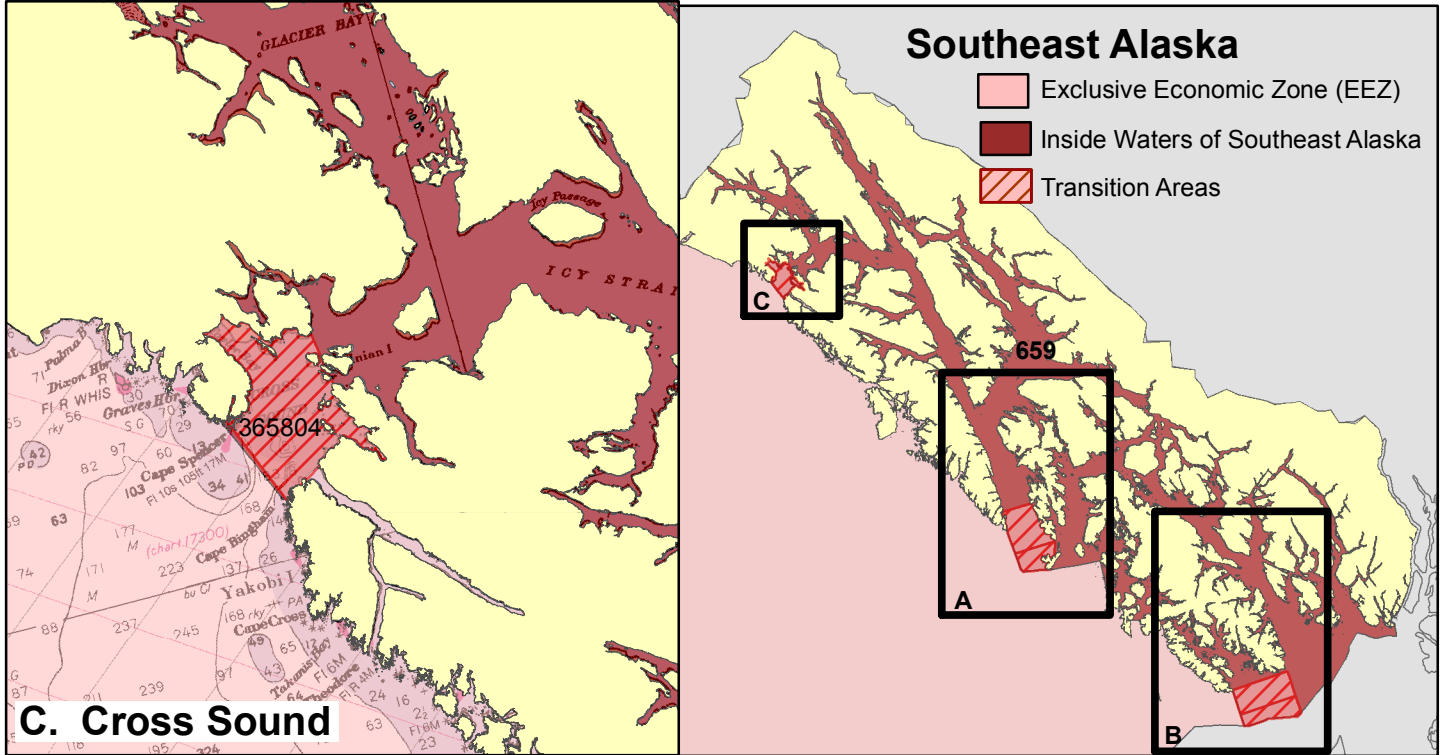


Figure 2. NPFMC Motion (February 2007)

In these transition areas, as in EEZ waters, seabird avoidance gear and standards are required.



In Chatham Strait, the transition area is defined as all waters inside ADF&G groundfish statistical areas 345603 and 345534 south of straight line between Point Harris (latitude 56.17.25 N) and Port Armstrong.

In Cross Sound, the transition area is defined as all waters inside ADF&G groundfish statistical areas 365804 west of a straight line from Point Wimbledon extending south through the Inian Islands to Point Lavinia (136.21.17 E).