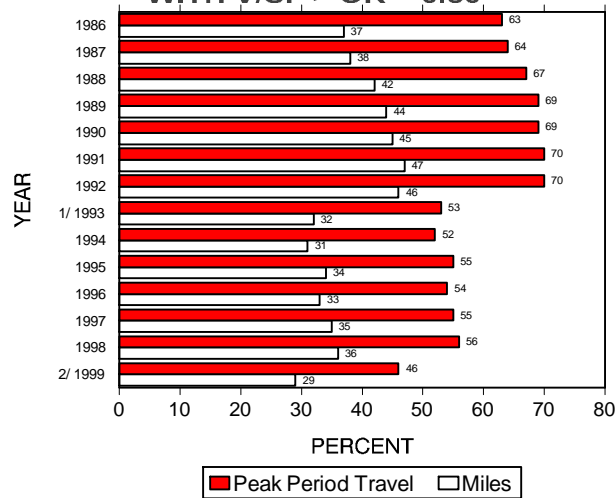


## URBAN INTERSTATE SYSTEM CONGESTION TRENDS

PERCENT OF MILES AND PEAK PERIOD TRAVEL  
WITH  $V/SF > OR = 0.80$



1/ 1993-1998 estimates based on Highway Capacity Manual, Third Edition, 1994 procedures.  
2/ 1999 estimates based on Highway Capacity Manual, Third Edition, 1998 procedures.

### AVERAGE DAILY VEHICLES PER LANE

