

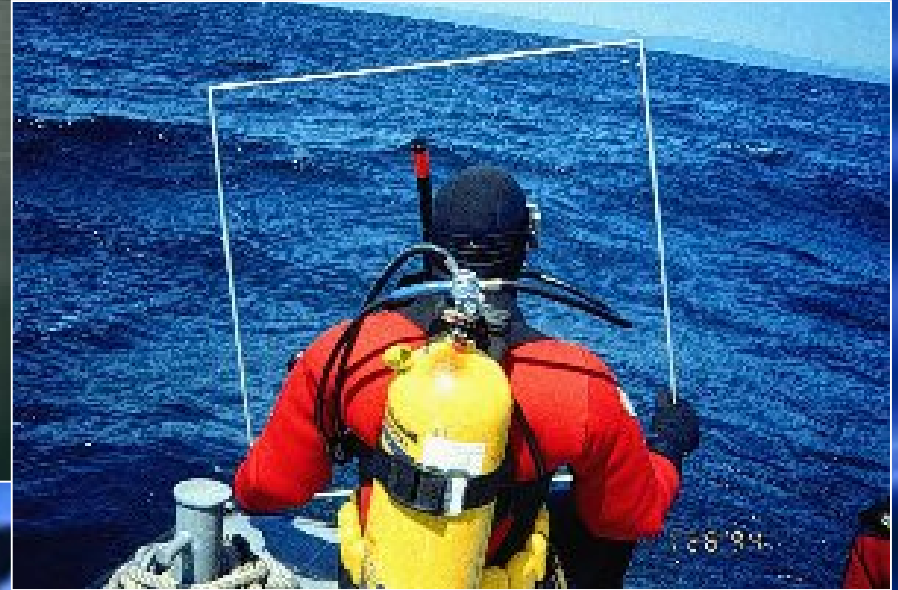
U.S. EPA DIVE PROGRAM



National Underwater Diving Safety Management Program



*Required by OSHA Regulation
29 CFR Part 1910, Subpart T*



- *EPA Policy based upon Scientific Diving*
- *Commercial Diving is not conducted by EPA divers*

OARM, Safety, Health and Environmental Management Division



Two key elements:

- *Diving Safety Manual*
- *Dive Control Board*



- *Diving Safety Manual followed to ensure operational safety of EPA divers*
- *The EPA Dive Safety Board provides national oversight for all EPA divers*

- *EPA employees may encounter hazardous land-based or underwater sites*



- *EPA divers are becoming national experts in contaminated water diving*



- *EPA has approximately 60 divers across the country performing many tasks*
- *Dive units are located in Regions I, II, III, HQ, IV, VI, VII, and X*
- *EPA conducts over 1,000 dives annually without serious accidents*



- *The EPA Dive Program supported the Columbia Shuttle water recovery*
- *Over 25 EPA divers joined forces to conduct search operations*

- *EPA made over 400 dives while searching an underwater forest*





The EPA/ERT Dive Team conducts:

- *Search and recovery operations*
- *Biological assessments*
- *Environmental sampling*
- *Surveys with remote sensing tools*



- *EPA divers often select dry suits and full face masks*
- *Many EPA dives are in cold water with low visibility*





Under hazardous conditions EPA may use surface supplied air

At Superfund sites EPA divers collect environmental samples





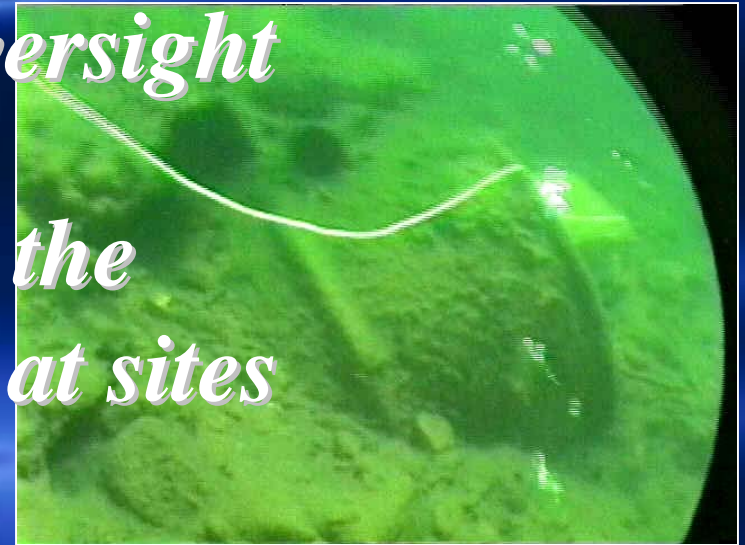
Dry suits and helmets provide the highest level of protection



- *Commercial divers should be used for HazMat cleanups at sites or spills*

- *EPA divers can assist OSCs with subcontracting or oversight*

- *EPA is responsible for the safety of all workers at sites under our control*



- *Most EPA Dive Units have dive vessels available*



- *EPA conducts diving operations on the R/V Anderson*



- *Remote Operated Vehicles are available for deep dives*



EPA scientific diving includes:

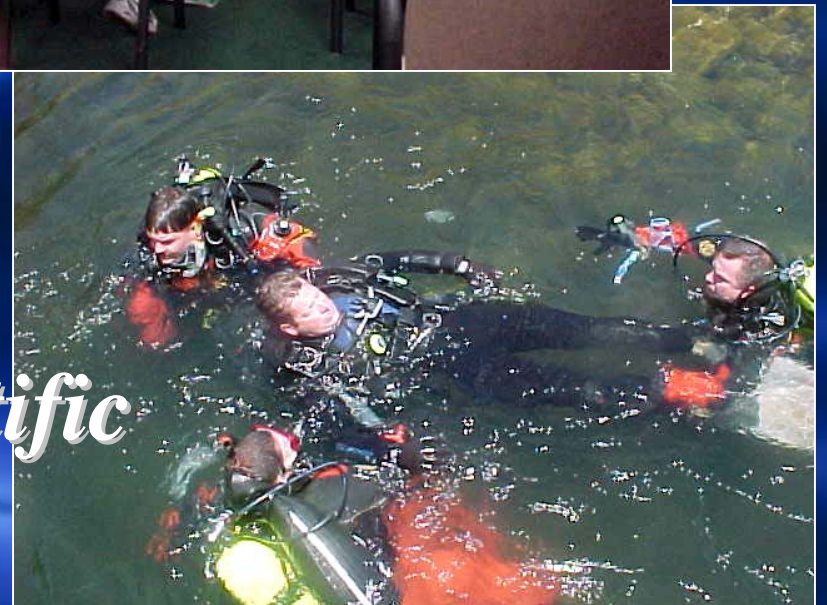
- *Coral disease studies*
- *Ocean dredged material disposal sites*
- *Sediment oxygen demand / nutrient studies*



EPA Diver Training Center, Gulf Breeze, FL



*Divers obtain EPA Scientific
Diver Certification*



To dive for EPA all divers must:

- *Have basic SCUBA certification*
- *Attend one week EPA Diver Training*
- *Belong to an EPA Dive Unit*
- *Adhere to the EPA Dive Program Policy*



To provide support to EPA OSCs divers acquire advanced training



Threats to domestic security require advanced diving techniques

*Check out the EPA Dive
Program*

This could be you !!!

