

# Managing an Integrated Response



Freshwater Spill Symposium  
Portland, Oregon  
May 2, 2006

**The O'BRIEN'S Group**

**Theo Camlin**  
Manager, NW and Alaska Region  
P.O. Box 8109  
Covington, Washington 98042  
425.501.5430  
E-mail: [theo.camlin@theobriensgroup.com](mailto:theo.camlin@theobriensgroup.com)

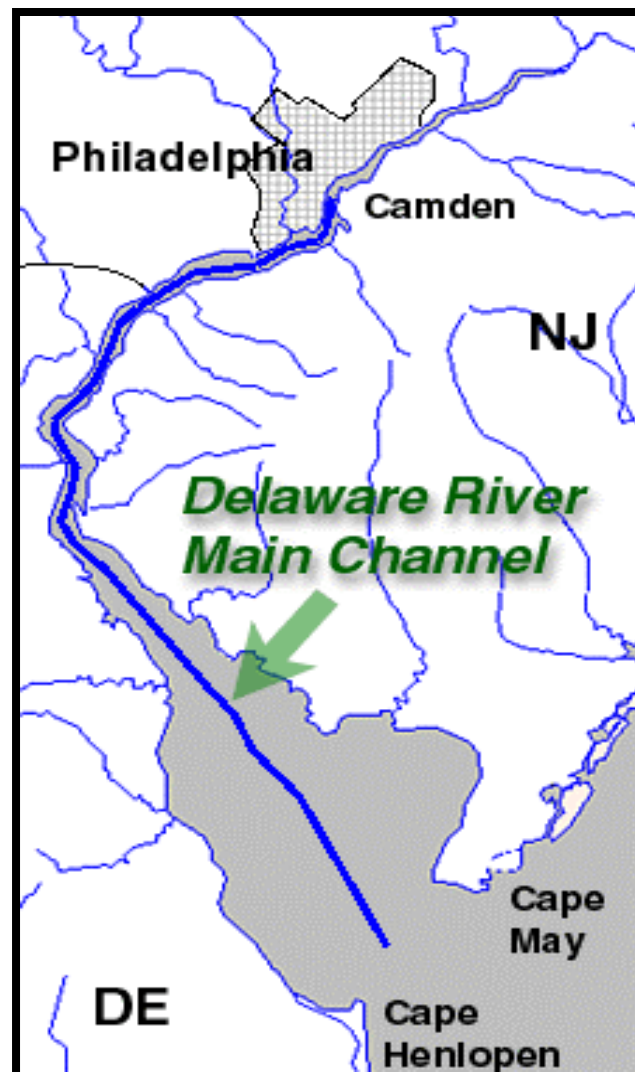
# Area Information

## COTP Philadelphia Statistics

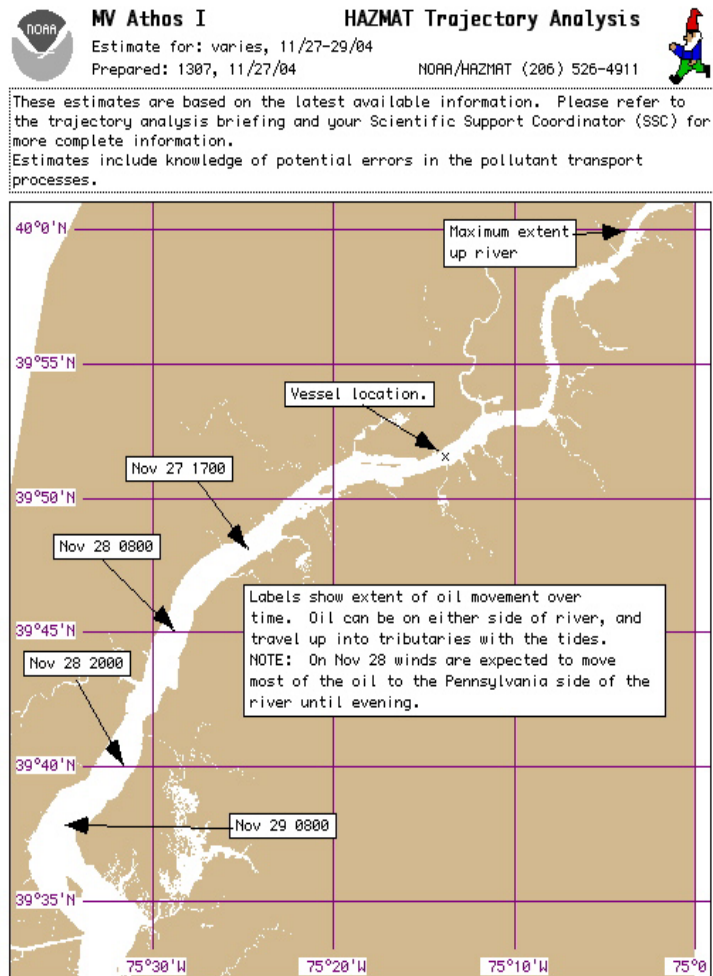
- ◆ Approx 3,000 vessel arrivals/year
- ◆ 3rd largest petro-chemical port in the nation (largest for crude oil imports)
- ◆ Largest VLCC receiving port in nation
- ◆ 1 million barrels of crude oil imported daily
- ◆ Largest North American port for steel, paper, and meat imports
- ◆ Largest cocoa bean and fruit import port on east coast
- ◆ Port system generates \$19 billion in annual revenue

## Home to:

- ◆ Five of the largest east coast refineries
- ◆ Six nuclear power plants
- ◆ Three states and two federal regions
- ◆ One of the 14 national strategic ports



# Initial Timeline



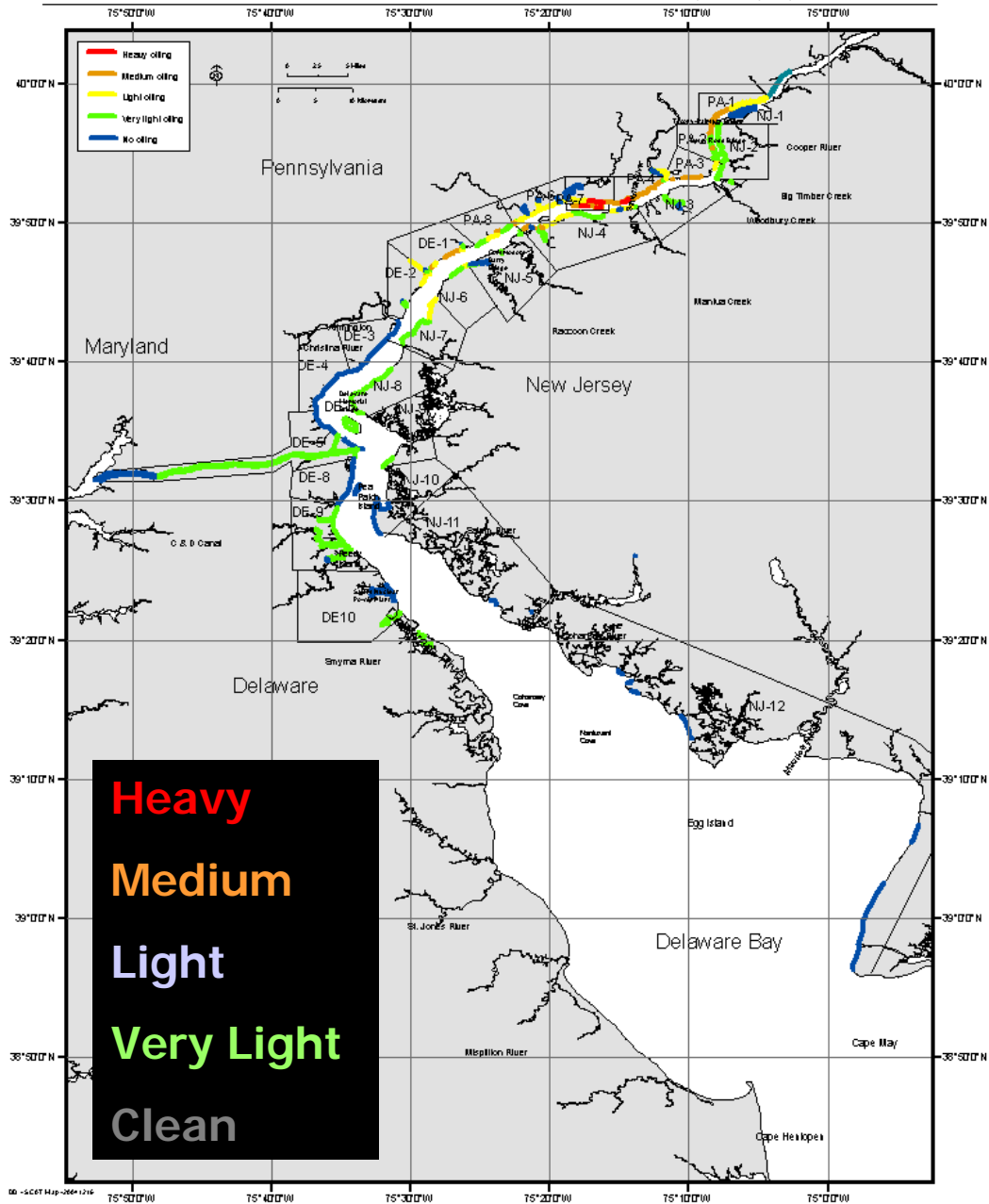
- 26 Nov 2130 hrs M/V ATHOS I 8 degree list to port
- 27 Nov Initial weather flat calm-oil observed on Delaware River
- 28 Nov high easterly winds drives oil against PA shore
- 29 Nov overflight indicates significant oil has been released
- 30 Nov high level of response effort including shoreline assessment
- 1 Dec high westerly winds drives oil against NJ shore

M/V Athos I, Delaware River, NJ/PA

DE, NJ, PA SCAT Map created by NOAA  
USE ONLY AS A GENERAL REFERENCE

Date/Time: 12/16/2004

Graphic does not represent precise amount or locations of oil

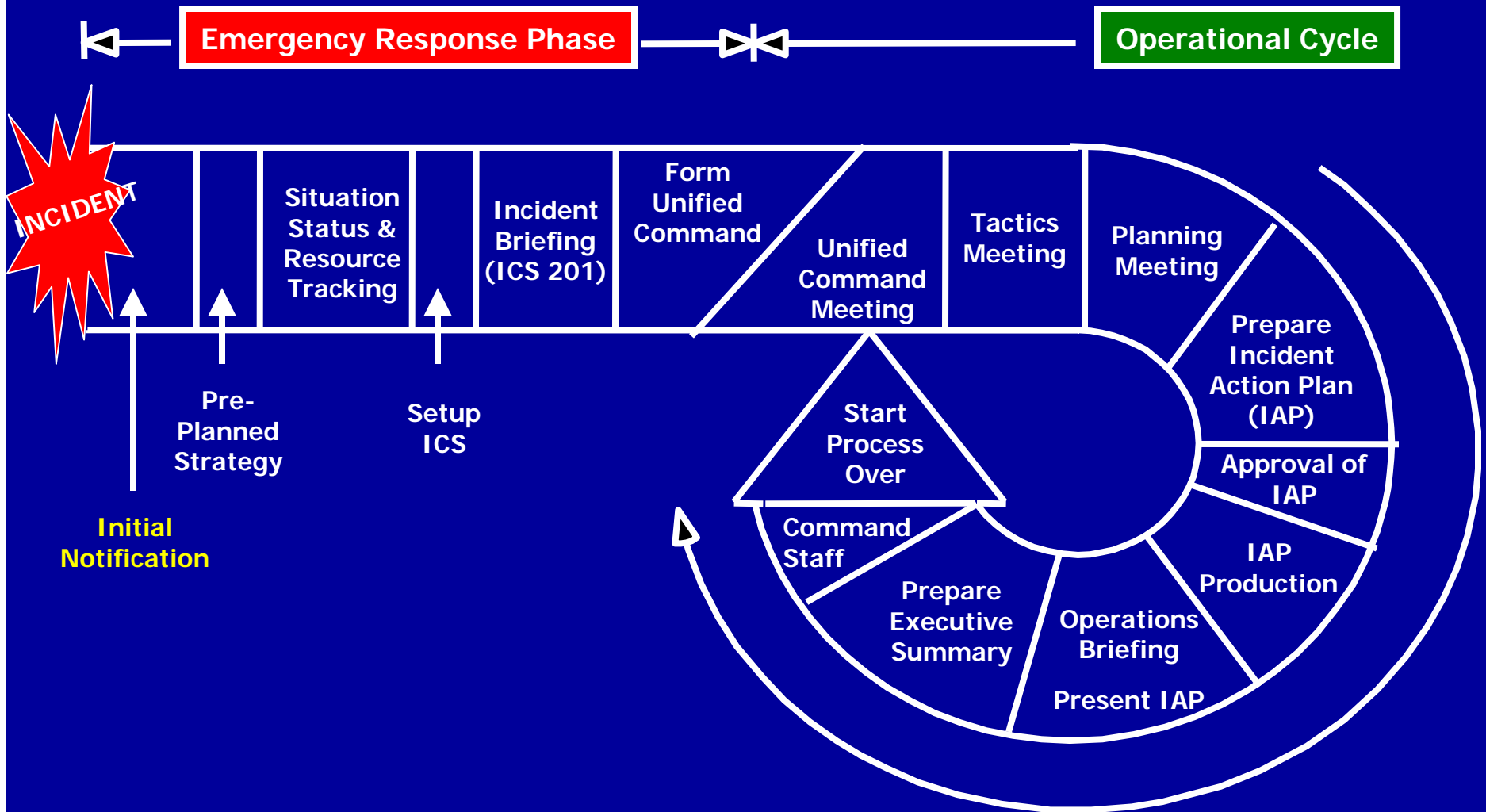


# Shipping Impacts

- ◆ Waterway closed to all vessel traffic
- ◆ Refineries reduced operations & threatened closure
- ◆ Delaware Bay lightering operations
- ◆ Containerized cargo delays
- ◆ Refrigerated foodstuff delays



# THE PLANNING CYCLE



# Operations Briefing

## Purpose of Meeting:

- Presentation of the Incident Action Plan for the next operational period

## Who Attends:

- UC, DIC
- Command and General Staff
- Div / group supervisors, TF leaders
- Branch Directors and Unit Leaders

## Pre-meeting Prep:

Incident Action Plan - completed and assembled for distribution

# Unified Command Meeting



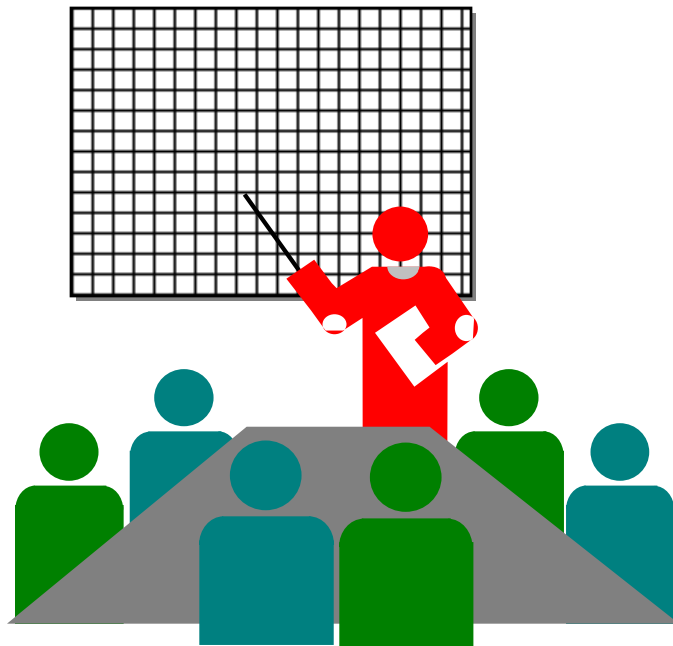
## Deliverables:

- Evaluate response actions and define priorities for next operational period
- Prepare ICS 202



# Tactics Meeting

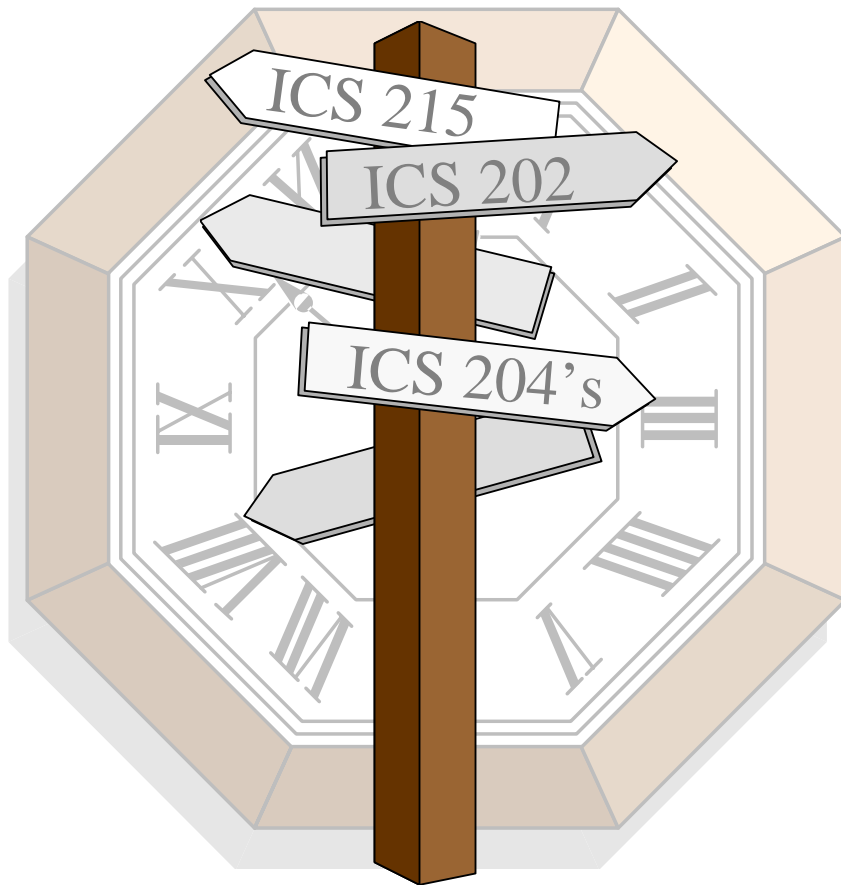
## ICS 215



### Deliverables:

- Prepare draft operational planning worksheet (ICS 215)
- Draft primary and alternate tactics to meet response objectives
- Resource requirements to meet response objectives

# Planning Meeting



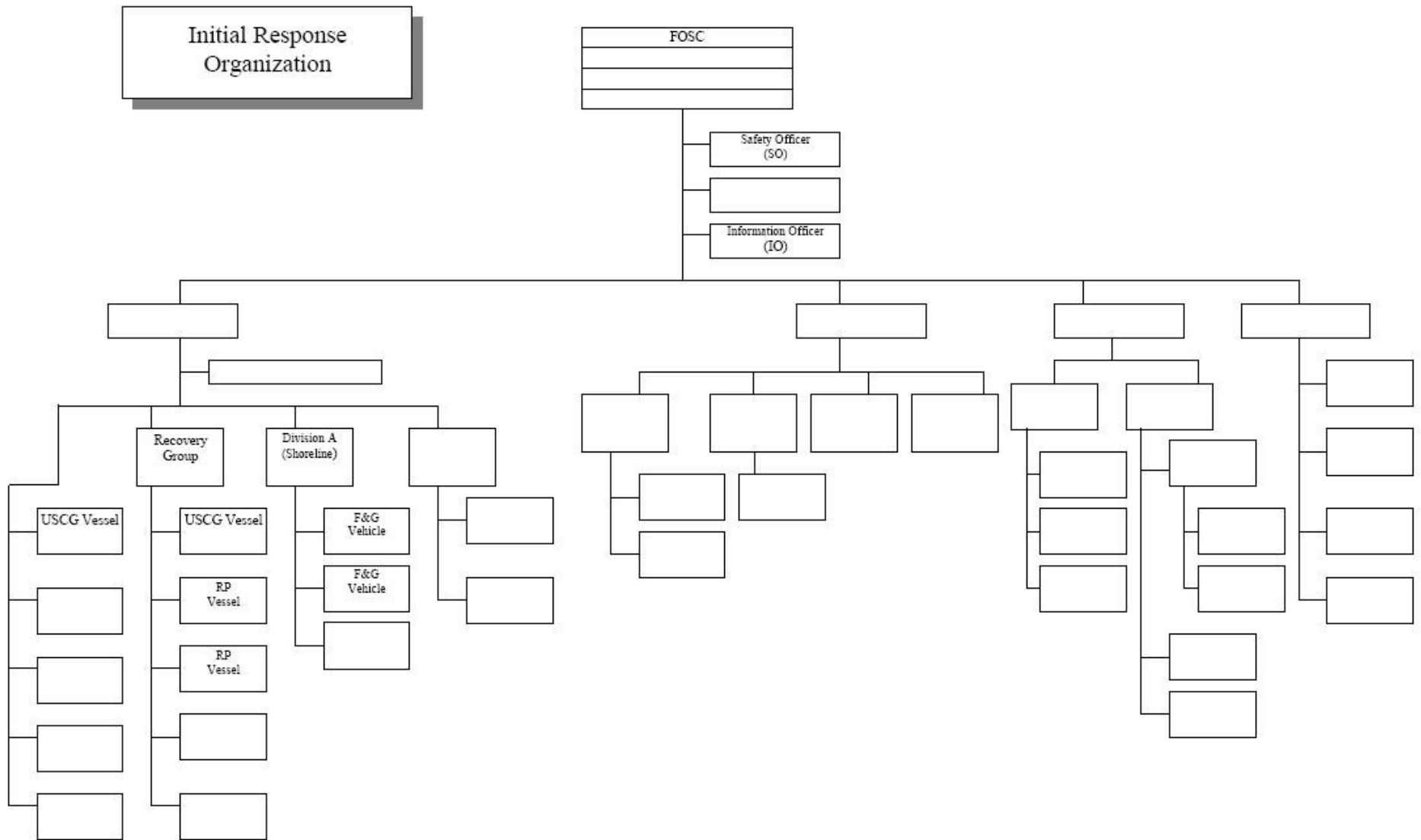
## Deliverables:

- Finalized ICS 215
- Finalized ICS 202
- Incident Action Plan development deadline
- Clear delegation of action items for IAP development.

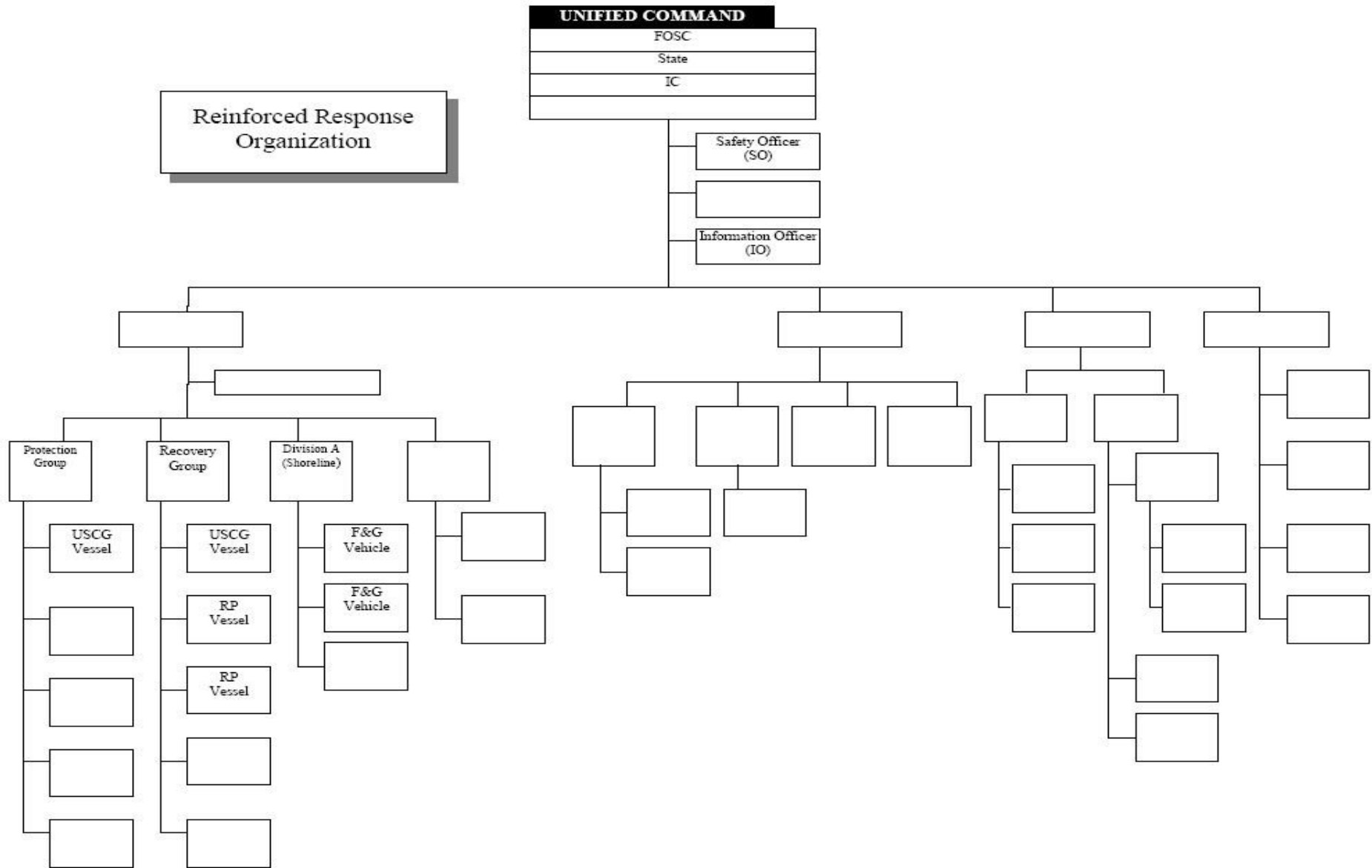
# Managing an Coordinated Response

- Operational
  - Search and Rescue
  - Salvage and Lightering
  - Protection
  - Shoreline Recovery
  - On-Water Recovery
  - Dispersants
  - Assessment
  - In-situ Burning
  - Wildlife
  - Disposal
  - Hazardous Substance
- Support/Coordination
  - Public Information
  - Assisting and Cooperating Agencies
  - Environmental
  - Economic
  - Claims
  - Natural Resource Damage
  - Investigations
  - Safety
  - Command Post Needs

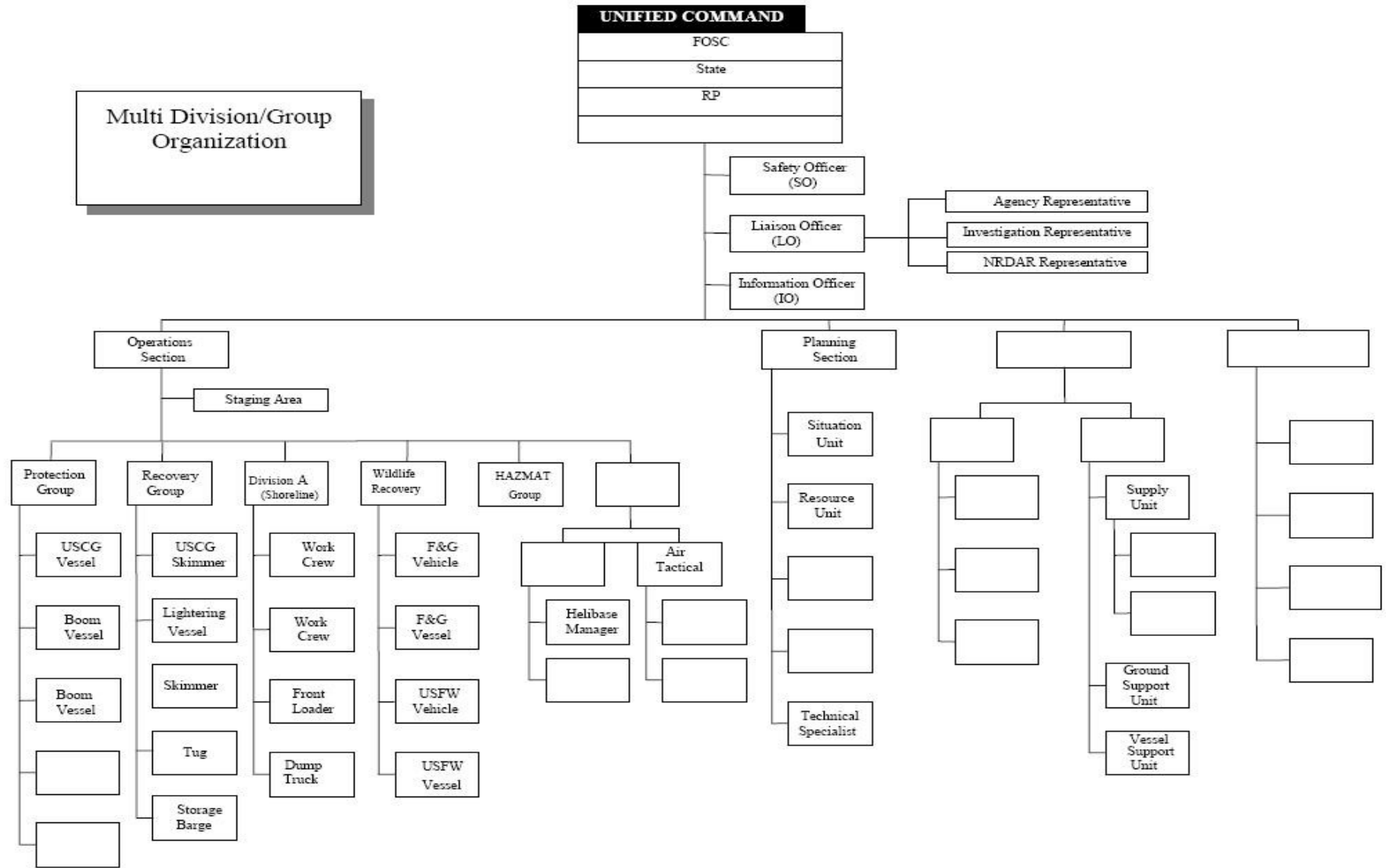
# Initial Response Organization



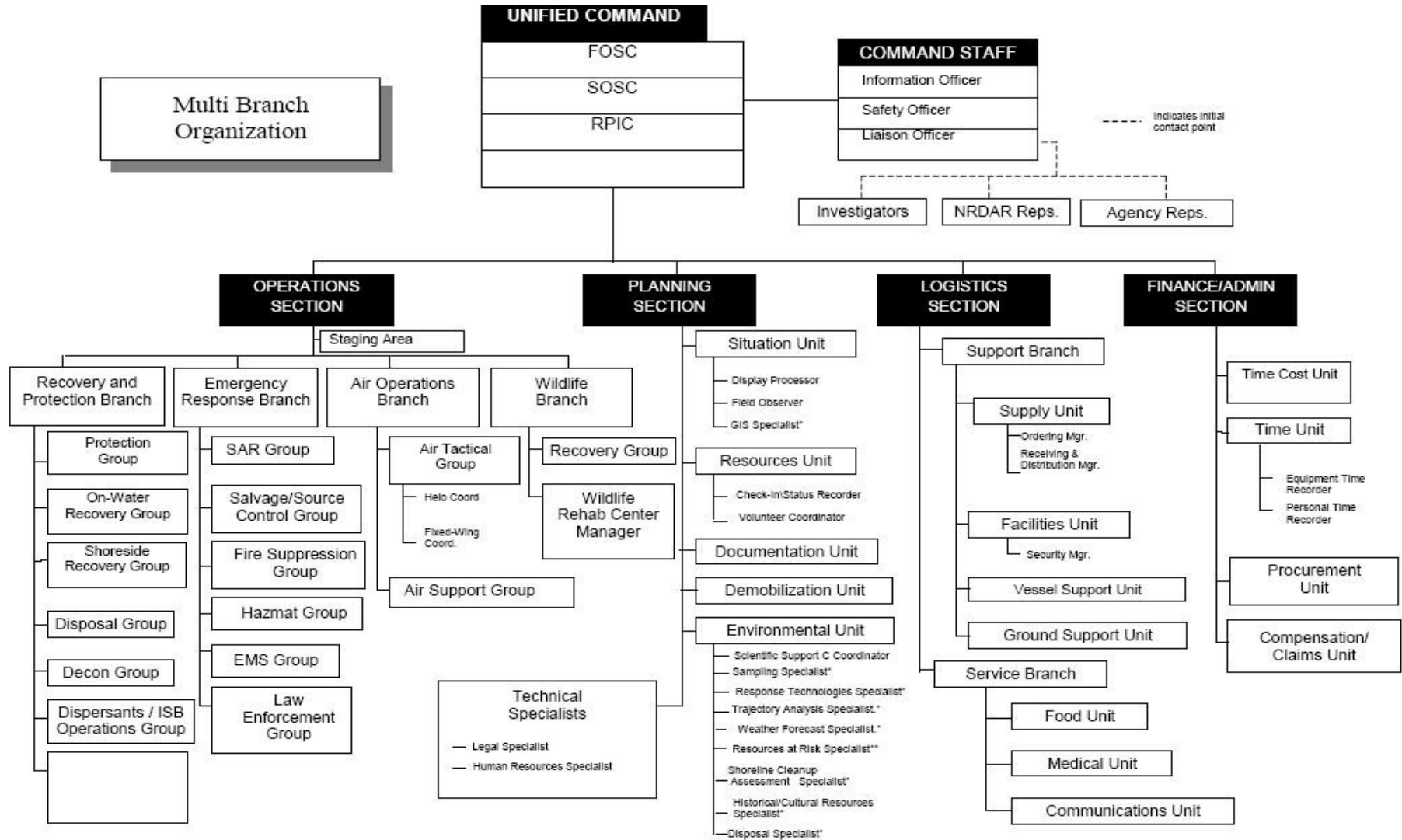
# Reinforced Response



# Multi Division/Group Organization

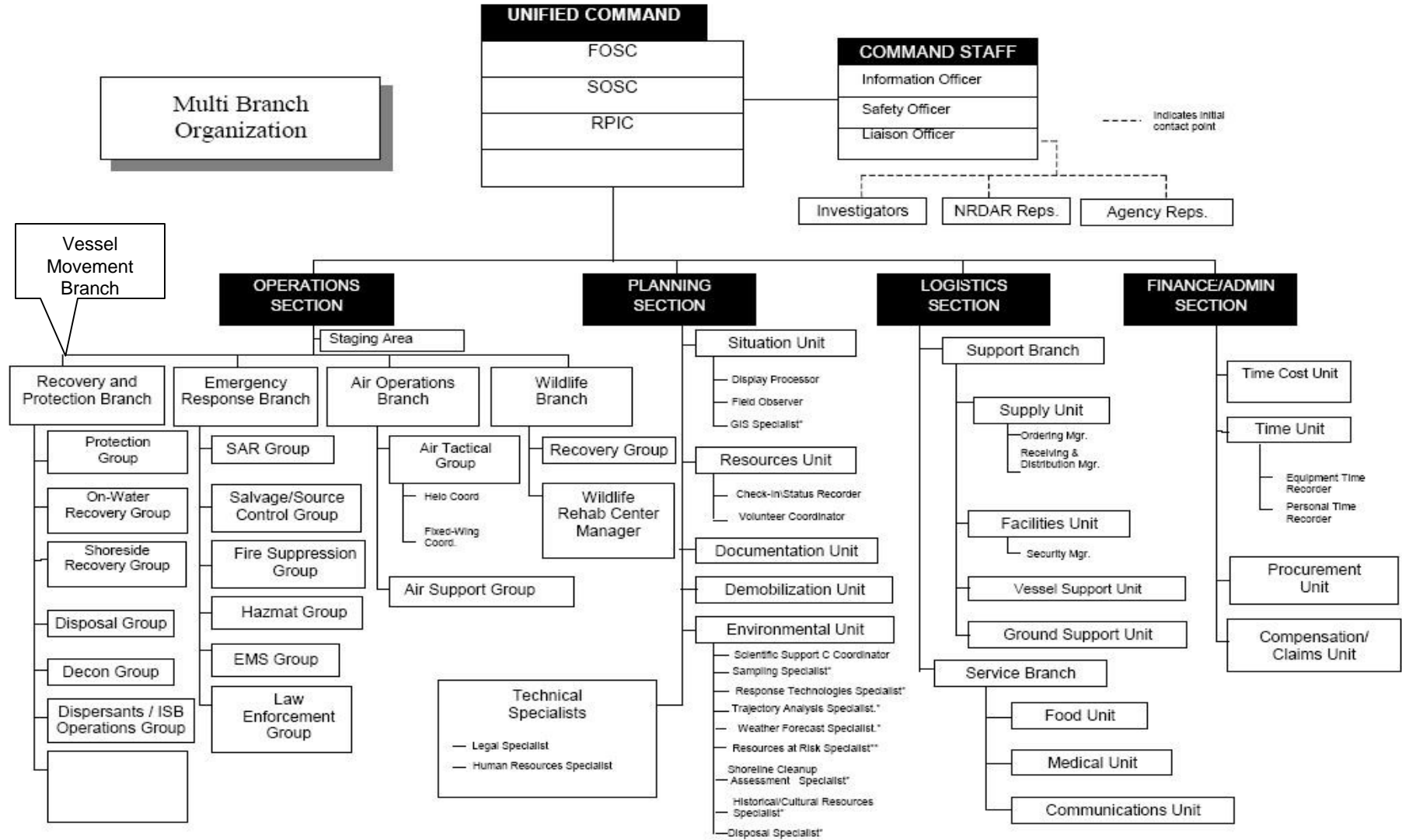


# Multi Branch Organization



\* Recommended Possible Assignment of Technical Specialists

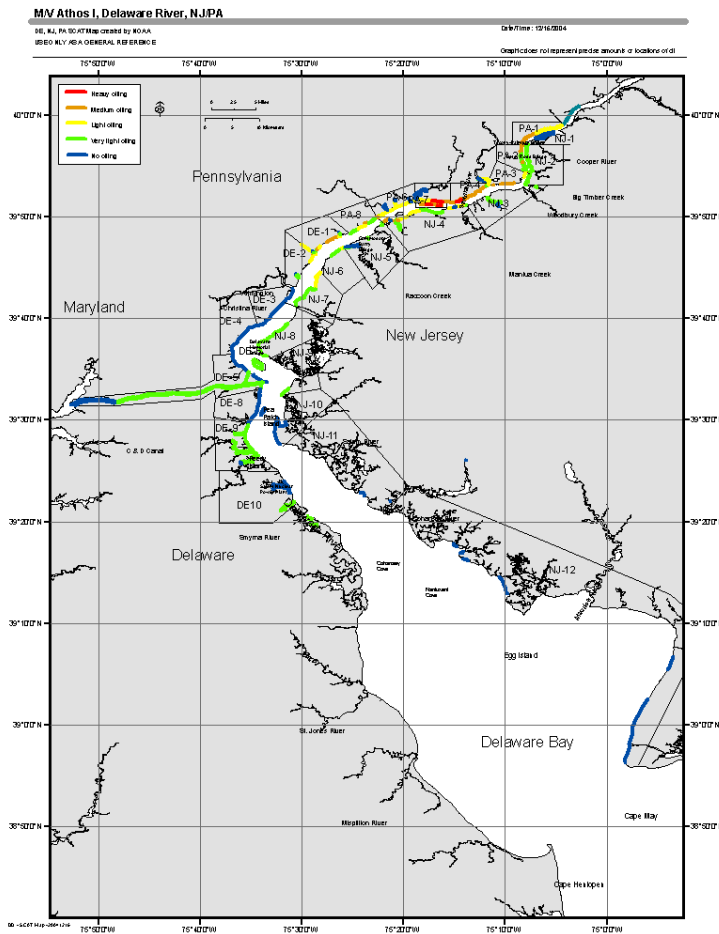
# Multi Branch Organization



\* Recommended Possible Assignment of Technical Specialists



# Managing an Coordinated Response



## Human Health

- No Public Injuries
- No Worker Injuries

## •Natural Environment

- Source of Discharge
- Source Contained
- Sensitive Areas Protected
- Resource Damage Minimized

## •Economy

- Economic Impacts Minimized

## •Public Communication

- Positive Media Coverage
- Positive Public Perception

## •Stakeholders Support

- Minimize Stakeholder Impact
- Stakeholders Well Informed
- Positive Meetings
- Prompt Handling of Claims

## •Organization

- Standard Response Mgmt. System
- Sufficient / Efficient Resources



Delivering “Best Response”