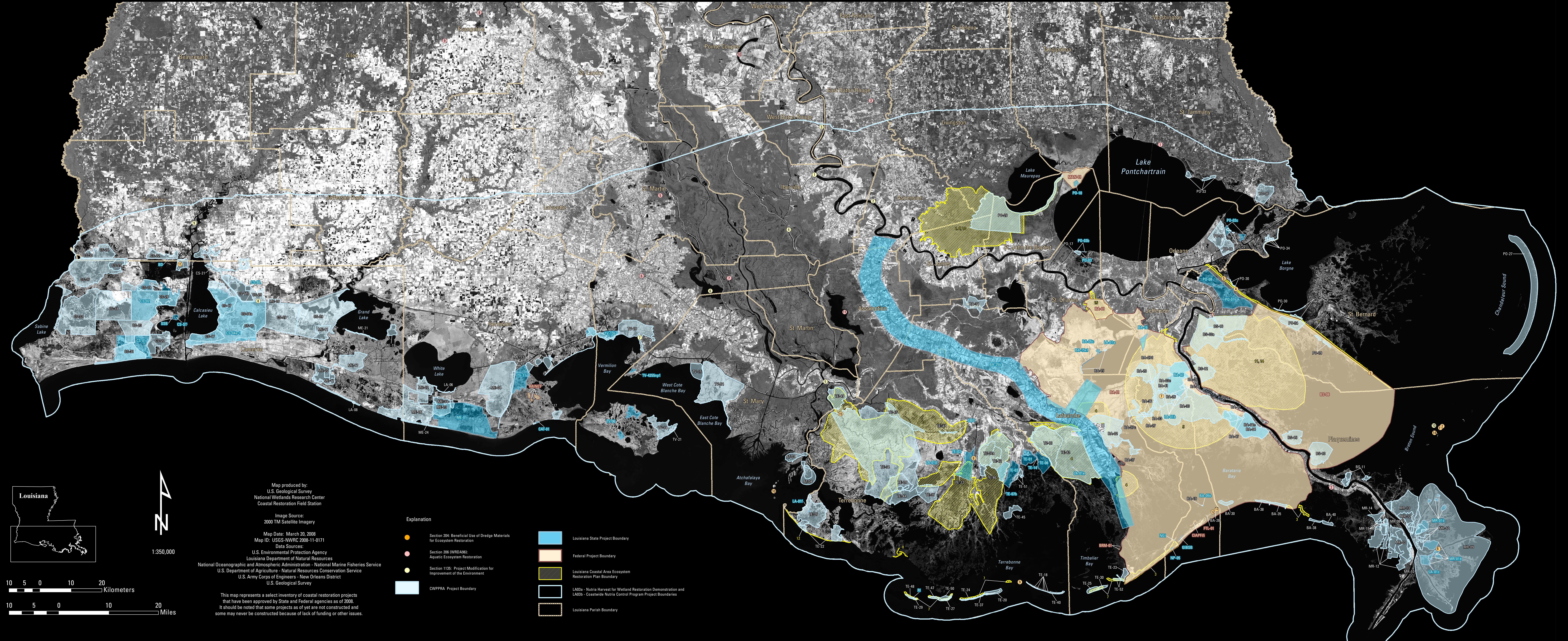


Selected Louisiana Coastal Restoration Projects 2008



Coastal Wetlands Planning, Protection and Restoration Act Projects

State Projects

Water Resources Development Act (WRDA) Projects

- AT-02 Atchafalaya Sediment Delivery
- AT-03 Big Island Mining
- AT-04 Castles Pass Channel Sediment Delivery
- BA-02 GIWW (Gulf Intracoastal Waterway) to Clovelly Hydrologic Restoration
- BA-03a Niche Outfall Management
- BA-04 West Point a la Hasche Outfall Management
- BA-15 Lake Salvador Shore Protection Demonstration
- BA-19 Barataria Bay Wetland Restoration
- BA-20 Jonathan Davis Wetland Restoration
- BA-23 Barataria Bay Waterway West Side Shoreline Protection
- BA-26 Barataria Bay Waterway East Side Shoreline Protection
- BA-27 Barataria Basin Landbridge Shoreline Protection, Phases 1 and 2
- BA-27a Barataria Basin Landbridge Shoreline Protection, Phase 3
- BA-27b Barataria Basin Landbridge Shoreline Protection, Phase 4
- BA-27c Barataria Basin Landbridge Shoreline Protection, Phase 5
- BA-28 Vegetative Plantings of a Dredged Material Disposal Site on Grand Terre Island
- BA-30 East/West Grand Terre Restoration
- BA-33 Delta Building Diversion in Myrtle Grove
- BA-34 Mississippi River Reintroduction into Northwestern Barataria Basin
- BA-35 Pass Chalond to Grand Bayou Pass Barrier Shoreline Restoration
- BA-36 Dedicated Dredging on the Barataria Basin Landbridge
- BA-37 Little Lake Shoreline Protection/Dedicated Dredging Near Round Lake
- BA-38 Barataria Basin Land Complex Project: Pelican Island and Pass La Mer to Chalond Pass Restoration
- BA-39 Mississippi River Sediment Diversion System - Bayou Duport
- BA-40 Riverine Sand Mining/Scuffold Island Restoration
- BA-41 South Shore of the Pen Shoreline Protection and Marsh Creation
- BA-42 Lake Hermitage Marsh Creation
- BA-47 West Point a la Hasche Outfall Management
- BA-48 Bayou Dupont Marsh and Ridge Creation
- BS-03a Cameron Diversion Outfall Management
- BS-10 Delta Building Diversion North of Fort St. Philip
- BS-11 Delta Management at Fort St. Philip
- BS-12 White Ditch Restoration and Outfall Management
- BS-13 Bayou L'Anse-au-Loup Freshwater Diversion
- BS-15 Restoring Mississippi River Reintroduction
- BS-16 Cameron Outfall Management/Lake Lery Shoreline Restoration
- CS-04a Cameron-Croche Maintenance
- CS-09 Brown Lake Hydrologic Restoration
- CS-11b Sweet Lake/Willow Lake Hydrologic Restoration
- CS-17 Cameron-Croche Pump
- CS-18 Sabine National Wildlife Refuge Erosion Protection
- CS-19 West Hackberry Vegetative Planting Demonstration
- CS-20 East Mud Lake Marsh Management
- CS-21 Highway 98 Hydrologic Restoration
- CS-22 Clear Marsh Bank Protection
- CS-23 Sabine Refuge Water Control Structures at Headquarters Canal, West Cove Canal, and Hog Island Gully
- CS-24 Perry Ridge Shore Protection
- CS-25 Plowden Terraces Demonstration
- CS-27 Black Bayou Hydrologic Restoration
- CS-28 Sabine Refuge Marsh Creation, Increment 1
- CS-29 Black Bayou Culverts Hydrologic Restoration
- CS-30 GIWW - Perry Ridge West Bank Stabilization
- CS-31 Holly Beach Sand Management
- CS-32 East Sabine Lake Hydrologic Restoration
- LA-06 Shoreline Protection Foundation Improvements Demonstration
- LA-08 Bio-Engineered Oyster Reef Demo
- LA-09 Freshwater Bayou Wetlands Restoration
- ME-09 Cameron Prairie National Wildlife Refuge Shoreline Protection
- ME-11 Humble Canal Hydrologic Restoration
- ME-12 Freshwater Bayou Bank Stabilization
- ME-14 Peasan Island Terracing
- ME-16 Freshwater Introduction South of Highway 82
- ME-17 Little Peasan Bayou Hydrologic Restoration
- ME-18 Rockefeller Refuge Gully Shoreline Stabilization
- ME-19 Grand-White Lakes Landbridge Protection
- ME-20 South Grand Chenier Hydrologic Restoration Project
- ME-21 Grand Lake Shoreline Protection
- ME-22 South White Lake Shoreline Protection
- ME-23 South Peasan Island Freshwater Introduction
- ME-24 Southwest LA Gulf Shoreline Nourishment and Protection
- MR-03 West Bay Sediment Diversion
- MR-06 Channel Armor Gap Crossings
- MR-09 Delta Wide Crevasseas
- MR-10 Dupont Maintenance Dredging Operations for Marsh Creation in the Mississippi River Delta Demonstration
- MR-12 Mississippi River Sediment Trap
- MR-13 Bayou Pass Diversion
- MR-14 Spanish Pass Diversion
- MR-15 Venice Ponds Marsh Creation and Crevasseas
- PO-10 Fritchke Marsh Restoration
- PO-12 Bayou Sauvage National Wildlife Refuge Hydrologic Restoration, Phase 1
- PO-13 Bayou LaBranche Wetland Creation
- PO-18 Bayou Sauvage National Wildlife Refuge Hydrologic Restoration, Phase 2
- PO-19 Mississippi River Gulf Outlet (MRGO) Diversion Area Marsh Protection
- PO-22 Sweet Lake/Willow Lake Hydrologic Restoration
- PO-23 Cameron-Croche Pump
- PO-24 Sabine National Wildlife Refuge Erosion Protection
- PO-25 West Hackberry Vegetative Planting Demonstration
- PO-26 East Mud Lake Marsh Management
- PO-27 Highway 98 Hydrologic Restoration
- PO-28 Clear Marsh Bank Protection
- PO-29 Sabine Refuge Water Control Structures at Headquarters Canal, West Cove Canal, and Hog Island Gully
- PO-34 Alligator Bend Marsh Restoration and Shoreline Protection
- TE-10 Grand Bayou/GIWW Freshwater Diversion
- TE-17 Falgout Canal Planting Demonstration
- TE-18 Timberline Island Planting Demonstration
- TE-20 Isles Dernieres Restoration East Island
- TE-22 West Point a la Hasche Protection Extension
- TE-24 West Point a la Hasche Protection Extension
- TE-24a Mississippi River Reintroduction into Bayou Lafourche
- TE-24b Chieniere au Tigre
- TE-27 Holly Beach
- TE-28 Freshwater Bayou Wetlands Restoration
- TE-29 Cameron-Croche Structure Automation
- TE-30 East Timberline Island Sediment Restoration, Phase 1
- TE-32a North Lake Boudreaux Basin Freshwater Introduction and Hydrologic Management
- TE-32b Penchant Basin Natural Resources Plan, Increment 1
- TE-37 New Out Dune and Marsh Restoration
- TE-39 South Lake de Cade Freshwater Introduction
- TE-40 Timberline Island Dune and Marsh Creation
- TE-41 Mandalay Bank Protection Demonstration
- TE-42 Moving Existing Acadian Marshes to Central Terrebonne
- TE-43 GIWW Bank Restoration of Critical Areas in Terrebonne
- TE-44 North Lake Mechant Landbridge Restoration
- TE-45 Terrebonne Bay Shore Protection Demonstration
- TE-46 West Lake Boudreaux Shoreline Protection and Marsh Creation
- TE-47 Ship Shoal, Whiskey West Bank Restoration
- TE-48 Terrebonne Island Shoreline Protection Marsh Creation
- TE-49 Avoca Island Diversion and Land Building
- TE-50 Whiskey Island Bank Barrier Marsh Creation
- TE-51 Madison Bay Marsh Creation and Terracing
- TE-52 West Belle Pass Barrer Headland Restoration
- TE-53 Vermilion Bay Wetland Restoration
- TE-54 Cote Blanche Hydrologic Restoration
- TV-09 Boston Canal/Vermilion Bay Bank Protection
- TV-10 Freshwater Bayou Bank Stabilization - Belle Isle Canal to Lock
- TV-12 Little Vermilion Bay Sediment Trapping
- TV-13a Daks/Avery Canal Hydrologic Restoration, Increment 1
- TV-13b Marsh Island Hydrologic Restoration
- TV-14 Sediment Trapping at "The Jaws"
- TV-15 Bayou Durale
- TV-16 Lower Pratt Canals
- TV-17 Lake Pontchartrain Marsh Creation
- TV-18 Chieniere au Tigre Sediment Trapping Demonstration
- TV-19 Weeks Bay Marsh Creation and Shore Protection/Commercial Canal Freshwater Redirection
- TV-20 Bayou Lake Shoreline Protection
- TV-21 East Marsh Island Marsh Creation
- WA-03 Naami Siphon Diversion
- WA-04 West Point a la Hasche Siphon Diversion
- WA-05 Owen Bass
- WA-06 Base de Chacras
- WA-07 Lake Shoreline Shoreline Protection Extension
- WA-10 Bayou Segnette
- WA-25 Mississippi River Reintroduction into Bayou Lafourche
- WA-26 Chieniere au Tigre
- CS-01 Holly Beach
- CS-02 Freshwater Bayou Wetlands Restoration
- CS-04a-1 Cameron-Croche Structure Automation
- CS-04-1 Blind Lake
- CS-07 Sabine Terraces
- LA-01a Dedicated Dredging Program - Lake Salvador
- LA-01b Dedicated Dredging Program - Bayou Duport
- LA-01c Dedicated Dredging Program - Pass a l'Ouvre
- LA-01d Dedicated Dredging Program - Terrebonne Parish School Board
- LA-01e Dedicated Dredging Program - Grand Bayou Blue
- LA-01f Dedicated Dredging Program - Point au Fer Site
- ME-01 Peasan Island Freshwater Introduction
- MR-01 North Grand Isle Breakwaters
- MR-05 Emera Island
- PO-01 Violet Siphon Diversion
- PO-02 Bayou Chevre
- PO-03 LaBranche Shoreline Stabilization and Canal Closure
- PO-04a LaBranche Shoreline Protection
- PO-04b Central Wetlands Pump Outfall
- PO-05 Turtie Cove Shore Protection
- RI Racoon Island Repair
- SB0 Spillbank along the GIWW
- SS0 Sabine National Wildlife Refuge Stabilization
- TE-01 Montague Wetland
- TE-02 Falgout Canal Wetland
- TE-03 Bayou LaBranche Wetland
- TE-04 Point au Chan
- TE-07 Lower Pratt Canals
- TE-08 Lake Pontchartrain Marsh Creation
- TV-06 Marsh Island Control Structures
- TV-11 Freshwater Bayou Bank Protection
- TV-13 Bayou Lake Shoreline Protection
- TV-13b Quintana Canal/Expromont Point

- CS-21 Delta Building Diversion North of Fort St. Philip
- CS-22 White Ditch Restoration and Outfall Management
- CS-23 Bayou L'Anse-au-Loup Freshwater Diversion
- CS-24 Restoring Mississippi River Reintroduction
- CS-25 Cameron Outfall Management/Lake Lery Shoreline Restoration
- CS-26a Cameron-Croche Maintenance
- CS-29 Brown Lake Hydrologic Restoration
- CS-31b Sweet Lake/Willow Lake Hydrologic Restoration
- CS-37 Cameron-Croche Pump
- CS-38 Sabine National Wildlife Refuge Erosion Protection
- CS-39 West Hackberry Vegetative Planting Demonstration
- CS-40 East Mud Lake Marsh Management
- CS-41 Highway 98 Hydrologic Restoration
- CS-42 Clear Marsh Bank Protection
- CS-43 Sabine Refuge Water Control Structures at Headquarters Canal, West Cove Canal, and Hog Island Gully
- ME-10 Peasan Island Terracing
- ME-11 Humble Canal Hydrologic Restoration
- ME-12 Freshwater Bayou Bank Stabilization
- ME-14 Peasan Island Terracing
- ME-16 Freshwater Introduction South of Highway 82
- ME-17 Little Peasan Bayou Hydrologic Restoration
- ME-18 Rockefeller Refuge Gully Shoreline Stabilization
- ME-19 Grand-White Lakes Landbridge Protection
- ME-20 South Grand Chenier Hydrologic Restoration Project
- ME-21 Grand Lake Shoreline Protection
- ME-22 South White Lake Shoreline Protection
- ME-23 South Peasan Island Freshwater Introduction
- ME-24 Southwest LA Gulf Shoreline Nourishment and Protection
- MR-03 West Bay Sediment Diversion
- MR-06 Channel Armor Gap Crossings
- MR-09 Delta Wide Crevasseas
- MR-10 Dupont Maintenance Dredging Operations for Marsh Creation in the Mississippi River Delta Demonstration
- MR-12 Mississippi River Sediment Trap
- MR-13 Bayou Pass Diversion
- MR-14 Spanish Pass Diversion
- MR-15 Venice Ponds Marsh Creation and Crevasseas
- PO-10 Fritchke Marsh Restoration
- PO-12 Bayou Sauvage National Wildlife Refuge Hydrologic Restoration, Phase 1
- PO-13 Bayou LaBranche Wetland Creation
- PO-18 Bayou Sauvage National Wildlife Refuge Hydrologic Restoration, Phase 2
- PO-19 Mississippi River Gulf Outlet (MRGO) Diversion Area Marsh Protection
- PO-22 Sweet Lake/Willow Lake Hydrologic Restoration
- PO-23 Cameron-Croche Pump
- PO-24 Sabine National Wildlife Refuge Erosion Protection
- PO-25 West Hackberry Vegetative Planting Demonstration
- PO-26 East Mud Lake Marsh Management
- PO-27 Highway 98 Hydrologic Restoration
- PO-28 Clear Marsh Bank Protection
- PO-29 Sabine Refuge Water Control Structures at Headquarters Canal, West Cove Canal, and Hog Island Gully
- PO-34 Alligator Bend Marsh Restoration and Shoreline Protection
- TE-10 Grand Bayou/GIWW Freshwater Diversion
- TE-17 Falgout Canal Planting Demonstration
- TE-18 Timberline Island Planting Demonstration
- TE-20 Isles Dernieres Restoration East Island
- TE-22 West Point a la Hasche Protection Extension
- TE-24 West Point a la Hasche Protection Extension
- TE-24a Mississippi River Reintroduction into Bayou Lafourche
- TE-24b Chieniere au Tigre
- TE-27 Holly Beach
- TE-28 Freshwater Bayou Wetlands Restoration
- TE-29 Cameron-Croche Structure Automation
- TE-30 East Timberline Island Sediment Restoration, Phase 1
- TE-32a North Lake Boudreaux Basin Freshwater Introduction and Hydrologic Management
- TE-32b Penchant Basin Natural Resources Plan, Increment 1
- TE-37 New Out Dune and Marsh Restoration
- TE-39 South Lake de Cade Freshwater Introduction
- TE-40 Timberline Island Dune and Marsh Creation
- TE-41 Mandalay Bank Protection Demonstration
- TE-42 Moving Existing Acadian Marshes to Central Terrebonne
- TE-43 GIWW Bank Restoration of Critical Areas in Terrebonne
- TE-44 North Lake Mechant Landbridge Restoration
- TE-45 Terrebonne Bay Shore Protection Demonstration
- TE-46 West Lake Boudreaux Shoreline Protection and Marsh Creation
- TE-47 Ship Shoal, Whiskey West Bank Restoration
- TE-48 Terrebonne Island Shoreline Protection Marsh Creation
- TE-49 Avoca Island Diversion and Land Building
- TE-50 Whiskey Island Bank Barrier Marsh Creation
- TE-51 Madison Bay Marsh Creation and Terracing
- TE-52 West Belle Pass Barrer Headland Restoration
- TE-53 Vermilion Bay Wetland Restoration
- TE-54 Cote Blanche Hydrologic Restoration
- TV-09 Boston Canal/Vermilion Bay Bank Protection
- TV-10 Freshwater Bayou Bank Stabilization - Belle Isle Canal to Lock
- TV-12 Little Vermilion Bay Sediment Trapping
- TV-13a Daks/Avery Canal Hydrologic Restoration, Increment 1
- TV-13b Marsh Island Hydrologic Restoration
- TV-14 Sediment Trapping at "The Jaws"
- TV-15 Bayou Durale
- TV-16 Lower Pratt Canals
- TV-17 Lake Pontchartrain Marsh Creation
- TV-18 Chieniere au Tigre Sediment Trapping Demonstration
- TV-19 Weeks Bay Marsh Creation and Shore Protection/Commercial Canal Freshwater Redirection
- TV-20 Bayou Lake Shoreline Protection
- TV-21 East Marsh Island Marsh Creation
- WA-03 Naami Siphon Diversion
- WA-04 West Point a la Hasche Siphon Diversion
- WA-05 Owen Bass
- WA-06 Base de Chacras
- WA-07 Lake Shoreline Shoreline Protection Extension
- WA-10 Bayou Segnette
- WA-25 Mississippi River Reintroduction into Bayou Lafourche
- WA-26 Chieniere au Tigre
- CS-01 Holly Beach
- CS-02 Freshwater Bayou Wetlands Restoration
- CS-04a-1 Cameron-Croche Structure Automation
- CS-04-1 Blind Lake
- CS-07 Sabine Terraces
- LA-01a Dedicated Dredging Program - Lake Salvador
- LA-01b Dedicated Dredging Program - Bayou Duport
- LA-01c Dedicated Dredging Program - Pass a l'Ouvre
- LA-01d Dedicated Dredging Program - Terrebonne Parish School Board
- LA-01e Dedicated Dredging Program - Grand Bayou Blue
- LA-01f Dedicated Dredging Program - Point au Fer Site
- ME-01 Peasan Island Freshwater Introduction
- MR-01 North Grand Isle Breakwaters
- MR-05 Emera Island
- PO-01 Violet Siphon Diversion
- PO-02 Bayou Chevre
- PO-03 LaBranche Shoreline Stabilization and Canal Closure
- PO-04a LaBranche Shoreline Protection
- PO-04b Central Wetlands Pump Outfall
- PO-05 Turtie Cove Shore Protection
- RI Racoon Island Repair
- SB0 Spillbank along the GIWW
- SS0 Sabine National Wildlife Refuge Stabilization
- TE-01 Montague Wetland
- TE-02 Falgout Canal Wetland
- TE-03 Bayou LaBranche Wetland
- TE-04 Point au Chan
- TE-07 Lower Pratt Canals
- TE-08 Lake Pontchartrain Marsh Creation
- TV-06 Marsh Island Control Structures
- TV-11 Freshwater Bayou Bank Protection
- TV-13 Bayou Lake Shoreline Protection
- TV-13b Quintana Canal/Expromont Point

- BA-03 Naami Siphon Diversion
- BA-04 West Point a la Hasche Siphon Diversion
- BA-05 Owen Bass
- BA-06 Base de Chacras
- BA-07 Lake Shoreline Shoreline Protection Extension
- BA-10 Bayou Segnette
- BA-25 Mississippi River Reintroduction into Bayou Lafourche
- BA-26 Chieniere au Tigre
- CS-01 Holly Beach
- CS-02 Freshwater Bayou Wetlands Restoration
- CS-04a-1 Cameron-Croche Structure Automation
- CS-04-1 Blind Lake
- CS-07 Sabine Terraces
- LA-01a Dedicated Dredging Program - Lake Salvador
- LA-01b Dedicated Dredging Program - Bayou Duport
- LA-01c Dedicated Dredging Program - Pass a l'Ouvre
- LA-01d Dedicated Dredging Program - Terrebonne Parish School Board
- LA-01e Dedicated Dredging Program - Grand Bayou Blue
- LA-01f Dedicated Dredging Program - Point au Fer Site
- ME-01 Peasan Island Freshwater Introduction
- MR-01 North Grand Isle Breakwaters
- MR-05 Emera Island
- PO-01 Violet Siphon Diversion
- PO-02 Bayou Chevre
- PO-03 LaBranche Shoreline Stabilization and Canal Closure
- PO-04a LaBranche Shoreline Protection
- PO-04b Central Wetlands Pump Outfall
- PO-05 Turtie Cove Shore Protection
- RI Racoon Island Repair
- SB0 Spillbank along the GIWW
- SS0 Sabine National Wildlife Refuge Stabilization
- TE-01 Montague Wetland
- TE-02 Falgout Canal Wetland
- TE-03 Bayou LaBranche Wetland
- TE-04 Point au Chan
- TE-07 Lower Pratt Canals
- TE-08 Lake Pontchartrain Marsh Creation
- TV-06 Marsh Island Control Structures
- TV-11 Freshwater Bayou Bank Protection
- TV-13 Bayou Lake Shoreline Protection
- TV-13b Quintana Canal/Expromont Point

- BA-01 Delta Pond Freshwater Diversion and Davis Pond Forced Drainage Area
- BA-02 Cameron Freshwater Diversion
- BA-03a Rainey
- BA-03b Rainey
- BA-03c Rainey
- BA-03d Rainey
- BA-03e Rainey
- BA-03f Rainey
- BA-03g Rainey
- BA-03h Rainey
- BA-03i Rainey
- BA-03j Rainey
- BA-03k Rainey
- BA-03l Rainey
- BA-03m Rainey
- BA-03n Rainey
- BA-03o Rainey
- BA-03p Rainey
- BA-03q Rainey
- BA-03r Rainey
- BA-03s Rainey
- BA-03t Rainey
- BA-03u Rainey
- BA-03v Rainey
- BA-03w Rainey
- BA-03x Rainey
- BA-03y Rainey
- BA-03z Rainey
- BA-04a Delta Pond Freshwater Diversion and Davis Pond Forced Drainage Area
- BA-04b Cameron Freshwater Diversion
- BA-04c Rainey
- BA-04d Rainey
- BA-04e Rainey
- BA-04f Rainey
- BA-04g Rainey
- BA-04h Rainey
- BA-04i Rainey
- BA-04j Rainey
- BA-04k Rainey
- BA-04l Rainey
- BA-04m Rainey
- BA-04n Rainey
- BA-04o Rainey
- BA-04p Rainey
- BA-04q Rainey
- BA-04r Rainey
- BA-04s Rainey
- BA-04t Rainey
- BA-04u Rainey
- BA-04v Rainey
- BA-04w Rainey
- BA-04x Rainey
- BA-04y Rainey
- BA-04z Rainey
- BA-05a Delta Pond Freshwater Diversion and Davis Pond Forced Drainage Area
- BA-05b Cameron Freshwater Diversion
- BA-05c Rainey
- BA-05d Rainey
- BA-05e Rainey
- BA-05f Rainey
- BA-05g Rainey
- BA-05h Rainey
- BA-05i Rainey
- BA-05j Rainey
- BA-05k Rainey
- BA-05l Rainey
- BA-05m Rainey
- BA-05n Rainey
- BA-05o Rainey
- BA-05p Rainey
- BA-05q Rainey
- BA-05r Rainey
- BA-05s Rainey
- BA-05t Rainey
- BA-05u Rainey
- BA-05v Rainey
- BA-05w Rainey
- BA-05x Rainey
- BA-05y Rainey
- BA-05z Rainey
- BA-06a Delta Pond Freshwater Diversion and Davis Pond Forced Drainage Area
- BA-06b Cameron Freshwater Diversion
- BA-06c Rainey
- BA-06d Rainey
- BA-06e Rainey
- BA-06f Rainey
- BA-06g Rainey
- BA-06h Rainey
- BA-06i Rainey
- BA-06j Rainey
- BA-06k Rainey
- BA-06l Rainey
- BA-06m Rainey
- BA-06n Rainey
- BA-06o Rainey
- BA-06p Rainey
- BA-06q Rainey
- BA-06r Rainey
- BA-06s Rainey
- BA-06t Rainey
- BA-06u Rainey
- BA-06v Rainey
- BA-06w Rainey
- BA-06x Rainey
- BA-06y Rainey
- BA-06z Rainey
- BA-07a Delta Pond Freshwater Diversion and Davis Pond Forced Drainage Area
- BA-07b Cameron Freshwater Diversion
- BA-07c Rainey
- BA-07d Rainey
- BA-07e Rainey
- BA-07f Rainey
- BA-07g Rainey
- BA-07h Rainey
- BA-07i Rainey
- BA-07j Rainey
- BA-07k Rainey
- BA-07l Rainey
- BA-07m Rainey
- BA-07n Rainey
- BA-07o Rainey
- BA-07p Rainey
- BA-07q Rainey
- BA-07r Rainey
- BA-07s Rainey
- BA-07t Rainey
- BA-07u Rainey
- BA-07v Rainey
- BA-07w Rainey
- BA-07x Rainey
- BA-07y Rainey
- BA-07z Rainey
- BA-08a Delta Pond Freshwater Diversion and Davis Pond Forced Drainage Area
- BA-08b Cameron Freshwater Diversion
- BA-08c Rainey
- BA-08d Rainey
- BA-08e Rainey
- BA-08f Rainey
- BA-08g Rainey
- BA-08h Rainey
- BA-08i Rainey
- BA-08j Rainey
- BA-08k Rainey
- BA-08l Rainey
- BA-08m Rainey
- BA-08n Rainey
- BA-08o Rainey
- BA-08p Rainey
- BA-08q Rainey
- BA-08r Rainey
- BA-08s Rainey
- BA-08t Rainey
- BA-08u Rainey
- BA-08v Rainey
- BA-08w Rainey
- BA-08x Rainey
- BA-08y Rainey
- BA-08z Rainey
- BA-09a Delta Pond Freshwater Diversion and Davis Pond Forced Drainage Area
- BA-09b Cameron Freshwater Diversion
- BA-09c Rainey
- BA-09d Rainey
- BA-09e Rainey
- BA-09f Rainey
- BA-09g Rainey
- BA-09h Rainey
- BA-09i Rainey
- BA-09j Rainey
- BA-09k Rainey
- BA-09l Rainey
- BA-09m Rainey
- BA-09n Rainey
- BA-09o Rainey
- BA-09p Rainey
- BA-09q Rainey
- BA-09r Rainey
- BA-09s Rainey
- BA-09t Rainey
- BA-09u Rainey
- BA-09v Rainey
- BA-09w Rainey
- BA-09x Rainey
- BA-09y Rainey
- BA-09z Rainey
- BA-10a Delta Pond Freshwater Diversion and Davis Pond Forced Drainage Area
- BA-10b Cameron Freshwater Diversion
- BA-10c Rainey
- BA-10d Rainey
- BA-10e Rainey
- BA-10f Rainey
- BA-10g Rainey
- BA-10h Rainey
- BA-10i Rainey
- BA-10j Rainey
- BA-10k Rainey
- BA-10l Rainey
- BA-10m Rainey
- BA-10n Rainey
- BA-10o Rainey
- BA-10p Rainey
- BA-10q Rainey
- BA-10r Rainey
- BA-10s Rainey
- BA-10t Rainey
- BA-10u Rainey
- BA-10v Rainey
- BA-10w Rainey
- BA-10x Rainey
- BA-10y Rainey
- BA-10z Rainey

- 1 City of Mandeville Wetlands Assimilation
- 2 Bura Marsh Creation
- 3 Combe River, Blackwater Conservation Area
- 4 Lake Maurepas Ecological Restoration
- 5 New Iberia
- 6 Bayou Boeuf
- 7 Atchafalaya Basin - Buffalo Cove Area - Beau Bayou
- 8 Mink Lake
- 9 Houma Navigational Canal - Mile 12 to 31
- 10 Lake Verret Ecosystem Restoration
- 11 MRGO - Breton Island Berm Mile - 2 to - 3
- 12 MRGO - Berm Mile - 2 to - 3 1899 and 2000
- 13 MRGO - Breton Island Berm Mile 2 to 3.2
- 14 MRGO - Mile 12 to 14
- 15 MRGO - Little Vermilion Bay
- 16 Pass a Loure Sediment Mining
- 17 Barataria Bay - Mile 245 to 251
- 18 Houma Navigational Canal - Mile 12 to 31
- 19 Houma Navigational Canal - Bar Channel - Wine Island Extension
- 20 Atchafalaya River Bar Channel
- 21 Brown Lake
- 22 Barataria Bay Waterway, Grand Terre Island
- 23 Barataria Bay Waterway, Grand Terre Back Bay
- 24 MRGO, South Jetty Wing Dike
- 25 Atchafalaya River and Bayou Chevre, Boost, and Black
- 26 GIWW - Mile 200-222 West of Harvey Lock
- 27 GIWW - Weeks Bay
- 28 GIWW - Mile 200-222 West of Harvey Lock
- 29 Calcasieu River Hydrologic Restoration 1993 and 1996
- 30 MRGO - Mile 34 to 40

- 1 Recommended for Conditional or Programmatic Authorization
- 2 Recommended for Conditional or Programmatic Authorization
- 3 Recommended for Conditional or Programmatic Authorization
- 4 Recommended for Conditional or Programmatic Authorization
- 5 Recommended for Conditional or Programmatic Authorization
- 6 Recommended for Conditional or Programmatic Authorization
- 7 Recommended for Conditional or Programmatic Authorization
- 8 Recommended for Conditional or Programmatic Authorization
- 9 Recommended for Conditional or Programmatic Authorization
- 10 Recommended for Conditional or Programmatic Authorization
- 11 Recommended for Conditional or Programmatic Authorization
- 12 Recommended for Conditional or Programmatic Authorization
- 13 Recommended for Conditional or Programmatic Authorization
- 14 Recommended for Conditional or Programmatic Authorization
- 15 Recommended for Conditional or Programmatic Authorization
- 1 Recommended for With Future Congressional Construction Authorization
- 2 Recommended for With Future Congressional Construction Authorization
- 3 Recommended for With Future Congressional Construction Authorization
- 4 Recommended for With Future Congressional Construction Authorization
- 5 Recommended for With Future Congressional Construction Authorization
- 6 Recommended for With Future Congressional Construction Authorization
- 7 Recommended for With Future Congressional Construction Authorization
- 8 Recommended for With Future Congressional Construction Authorization
- 9 Recommended for With Future Congressional Construction Authorization
- 10 Recommended for With Future Congressional Construction Authorization
- 11 Recommended for With Future Congressional Construction Authorization
- 12 Recommended for With Future Congressional Construction Authorization
- 13 Recommended for With Future Congressional Construction Authorization
- 14 Recommended for With Future Congressional Construction Authorization
- 15 Recommended for With Future Congressional Construction Authorization

Selected Projects of the Continuing Authorities Program

* Denotes that projects have been proposed but not authorized.