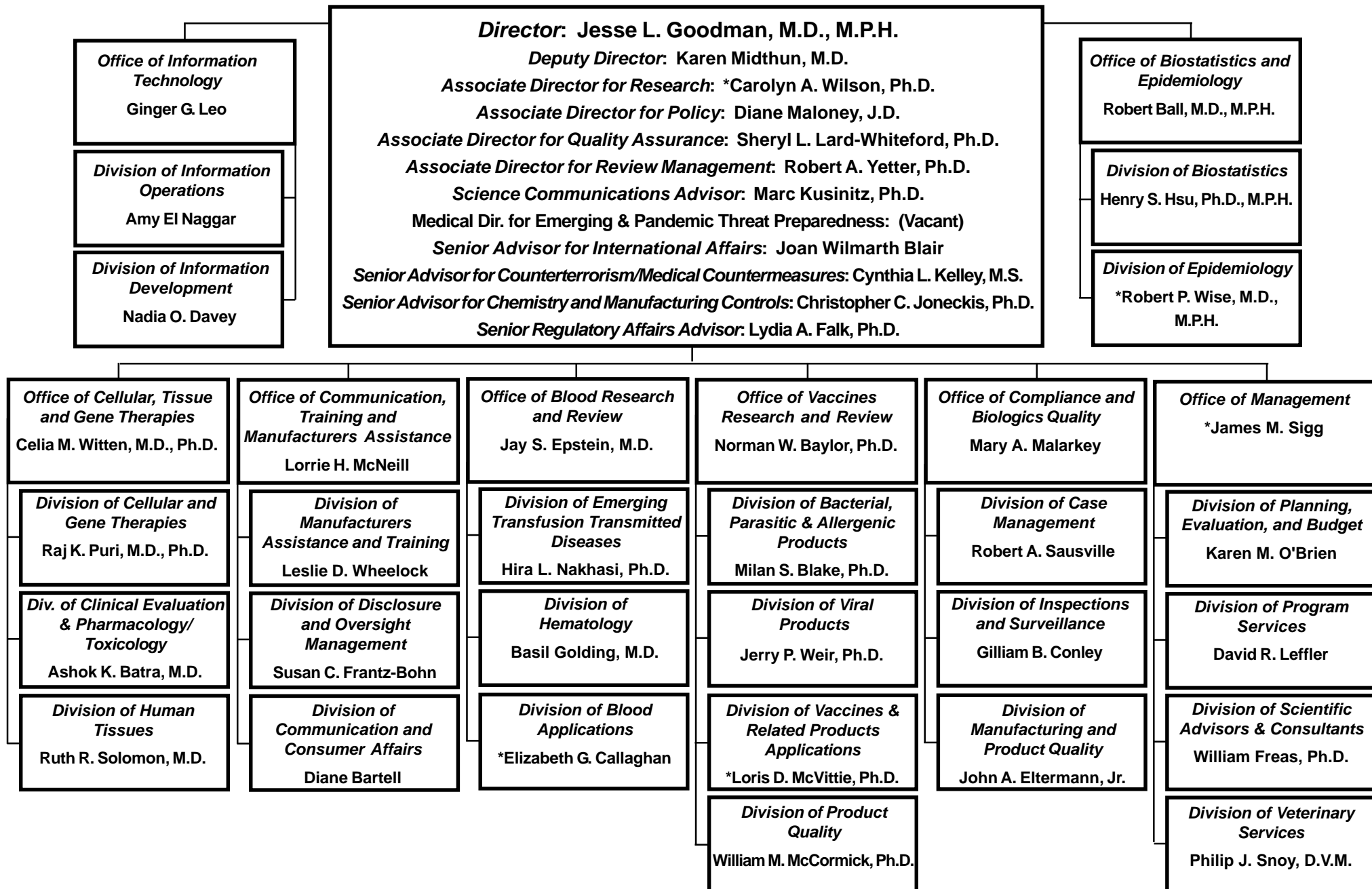


CENTER FOR BIOLOGICS EVALUATION AND RESEARCH



*Acting

07/08.1

**CENTER FOR
BIOLOGICS
EVALUATION
AND
RESEARCH**

Director
Jesse L. Goodman, M.D., M.P.H.

Deputy Director
Karen Midthun, M.D.

Associate Director for Policy
Diane Maloney, J.D.

Associate Director for Quality Assurance
Sheryl L. Lard-Whiteford, Ph.D.

Associate Director for Research
*Carolyn A. Wilson, Ph.D.

Associate Director for Review Management
Robert A. Yetter, Ph.D.

Science Communications Advisor
Marc Kusnitz, Ph.D.

Senior Advisor for International Affairs
Joan Wilmarth Blair

Senior Advisor for Counterterrorism/Medical Countermeasures
Cynthia L. Kelley, M.S.

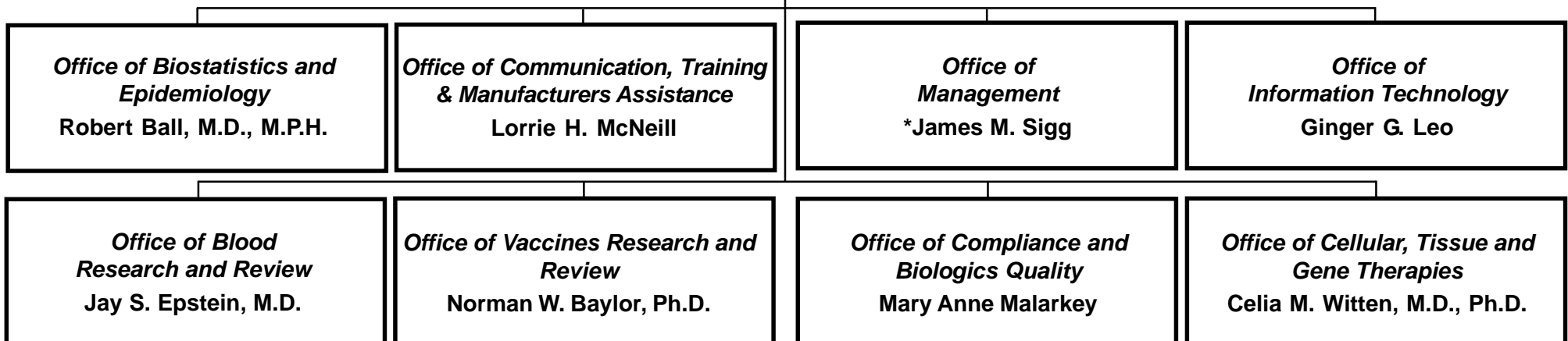
Senior Advisor for Chemistry and Manufacturing Controls
Christopher C. Joneckis, Ph.D.

Medical Director for Emerging & Pandemic Threat Preparedness
(Vacant)

Senior Scientist for Emerging & Pandemic Threat Preparedness
Jean L. Hu-Primmer, M.S.

Special Assistant to the Director for Human Subject Protection
Richard D. Diamond, M.D., M.P.A.

Senior Regulatory Affairs Advisor
Lydia A. Falk, Ph.D.



*Acting

**CBER
IMMEDIATE
OFFICE OF THE
DIRECTOR**

Director
Jesse L. Goodman, M.D., M.P.H.
Deputy Director
Karen Midthun, M.D.
Senior Advisor for International Affairs
Joan Wilmarth Blair
Science Communications Advisor
Marc Kusinitz, Ph.D.
Senior Advisor for Counterterrorism/Medical Countermeasures
Cynthia L. Kelley, M.S.
Senior Advisor for Chemistry and Manufacturing Controls
Christopher C. Joneckis, Ph.D.
Special Assistant to the Director for Human Subject Protection
Richard D. Diamond, M.D., M.P.A.
Emergency Response Coordinator
George R. Gentile
Senior Regulatory Affairs Advisor
Lydia A. Falk, Ph.D.

Medical Director for Emerging & Pandemic Threat Preparedness
(Vacant)

Senior Scientist for Emerging & Pandemic Threat Preparedness
Jean L. Hu-Primmer, M.S.

Associate Director for Review Management
Robert A. Yetter, Ph.D.

Document Control Center
Jules M. Meisler

Associate Director for Policy
Diane Maloney, J.D.

Regulations and Policy Staff
Anne Kirchner

Associate Director for Research
*Carolyn A. Wilson, Ph.D.

Core Facilities Team
Nga Yen Nguyen, Ph.D.

Associate Director for Quality Assurance
Sheryl L. Lard-Whiteford, Ph.D.

Center Laboratory Quality Manager
Deborah L. Jansen

Quality Assurance Staff

*Acting

**CBER
OFFICE OF
BIostatISTICS
AND
Epidemiology**

Director
Robert Ball, M.D., M.P.H.

Deputy Director
Steven A. Anderson, Ph.D.

Associate Director for Risk Assessment
Mark O. Walderhaug, Ph.D.

Associate Director for Research
Steven A. Anderson, Ph.D.

Program Manager
Sylvia Gay

Division of Biostatistics
Henry S. Hsu, Ph.D., M.P.H.

Vaccine Evaluation Branch
A. Dale Horne, Dr.P.H.

Therapeutics Evaluation Branch
Ghanshyam Gupta, Ph.D.

Division of Epidemiology
***Robert P. Wise, M.D., M.P.H**

Vaccine Safety Branch
***Manette T. Niu, M.D.**

Therapeutics and Blood Safety Branch
***Craig E. Zinderman, M.D.**

*Acting

**CBER
OFFICE OF
COMMUNICATION,
TRAINING AND
MANUFACTURERS
ASSISTANCE**

Director
Lorrie H. McNeill

Deputy Director
Joanne C. Binkley

Program Manager
Kim Athey

**Division of Manufacturers
Assistance and Training**
Leslie D. Wheelock

**Career Development and
Directed Training Branch**
Laura L. Stewart

**Manufacturers Assistance and
Technical Training Branch**
Adrienne Hornatko-Munoz

**Division of Disclosure and
Oversight Management**
Susan C. Frantz-Bohn

**Congressional and Oversight
Branch**
*Susan C. Frantz-Bohn

**Access Litigation and Freedom
of Information Branch**
Beth Brockner-Ryan

**Division of Communication
and Consumer Affairs**
Diane Bartell

Executive Secretariat Team
*Diane Bartell

**Communication Technology
Branch**
Karen A. Groover

Consumer Affairs Branch
*Diane Bartell

*Acting

**CBER
OFFICE OF
MANAGEMENT**

Director
***James M. Sigg**

Deputy Director
James M. Sigg

White Oak Planning Team
Maureen E. Sheridan

**Regulatory Information
Management Staff**
Roger D. Eastep

Division of Program Services
David R. Leffler
Assistant Director for Safety
Larry M. Solomon

**Division of Planning,
Evaluation, and Budget**
Karen M. O'Brien

**Division of Scientific
Advisors & Consultants**
William Freas, Ph.D.

**Division of Veterinary
Services**
Philip J. Snoy, D.V.M.

Building Operations Staff
Catrina M. Posley

**Resource Management
Branch**
Connie A. Giganti

**Program Operations
Branch**
Cynthia Hart-Smith

**Planning and
Evaluation Branch**
Mary Pat Leary

**Program Management
Services Branch**
Marsha C. Williams

*Acting

**CBER
OFFICE OF
INFORMATION
TECHNOLOGY**

Director
Ginger G. Leo

Deputy Director
Amy El Naggar

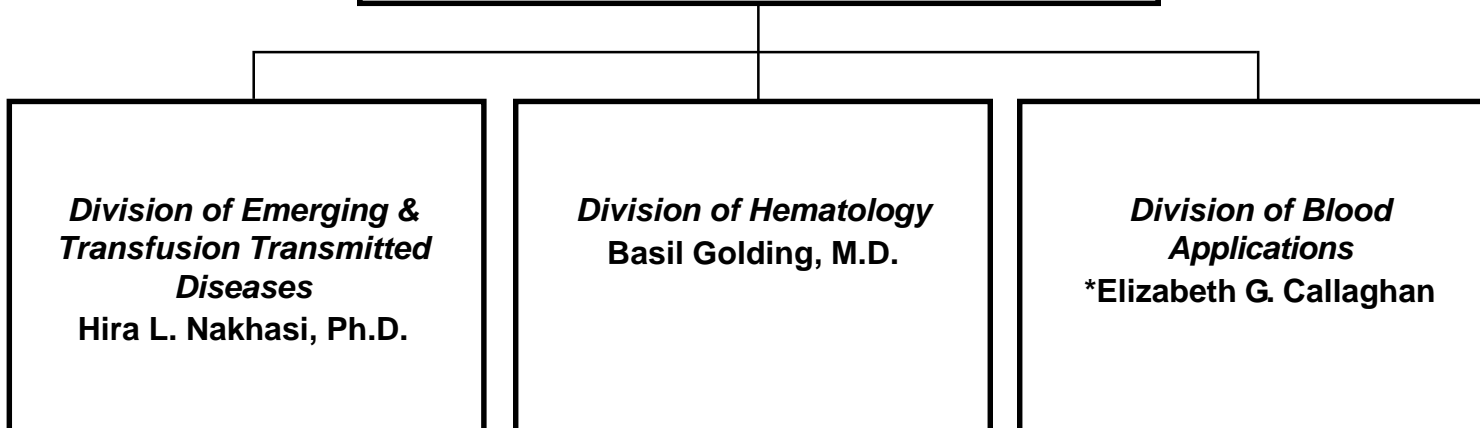
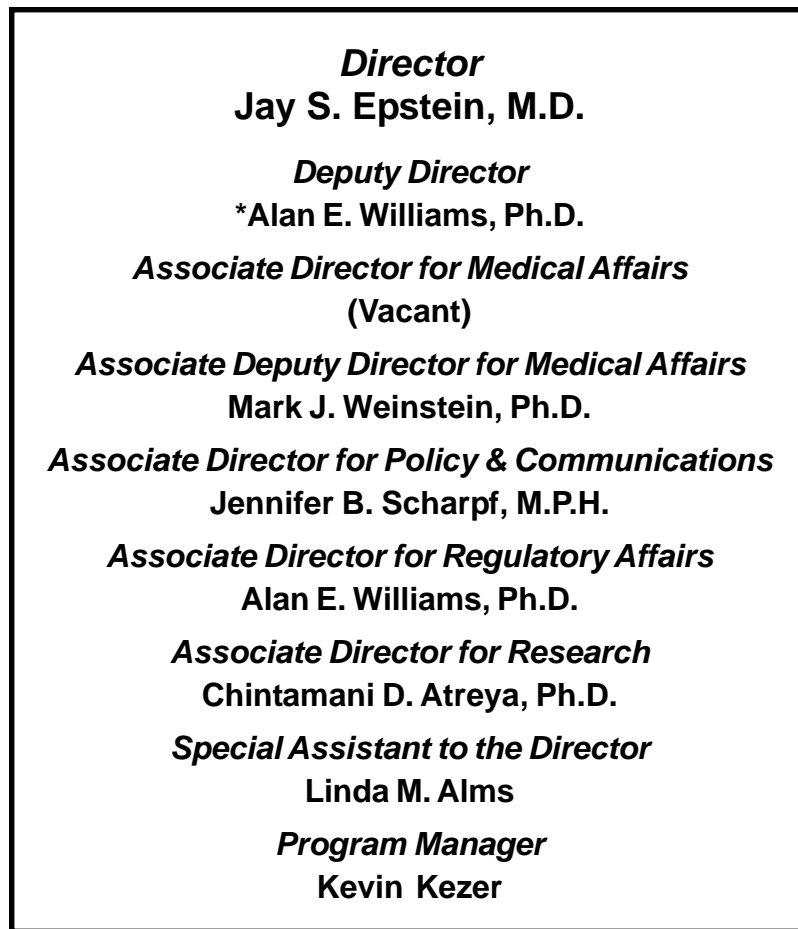
Chief Technology Officer
Marco S. Venida



*Division of Information
Technology Operations*
Amy El Naggar

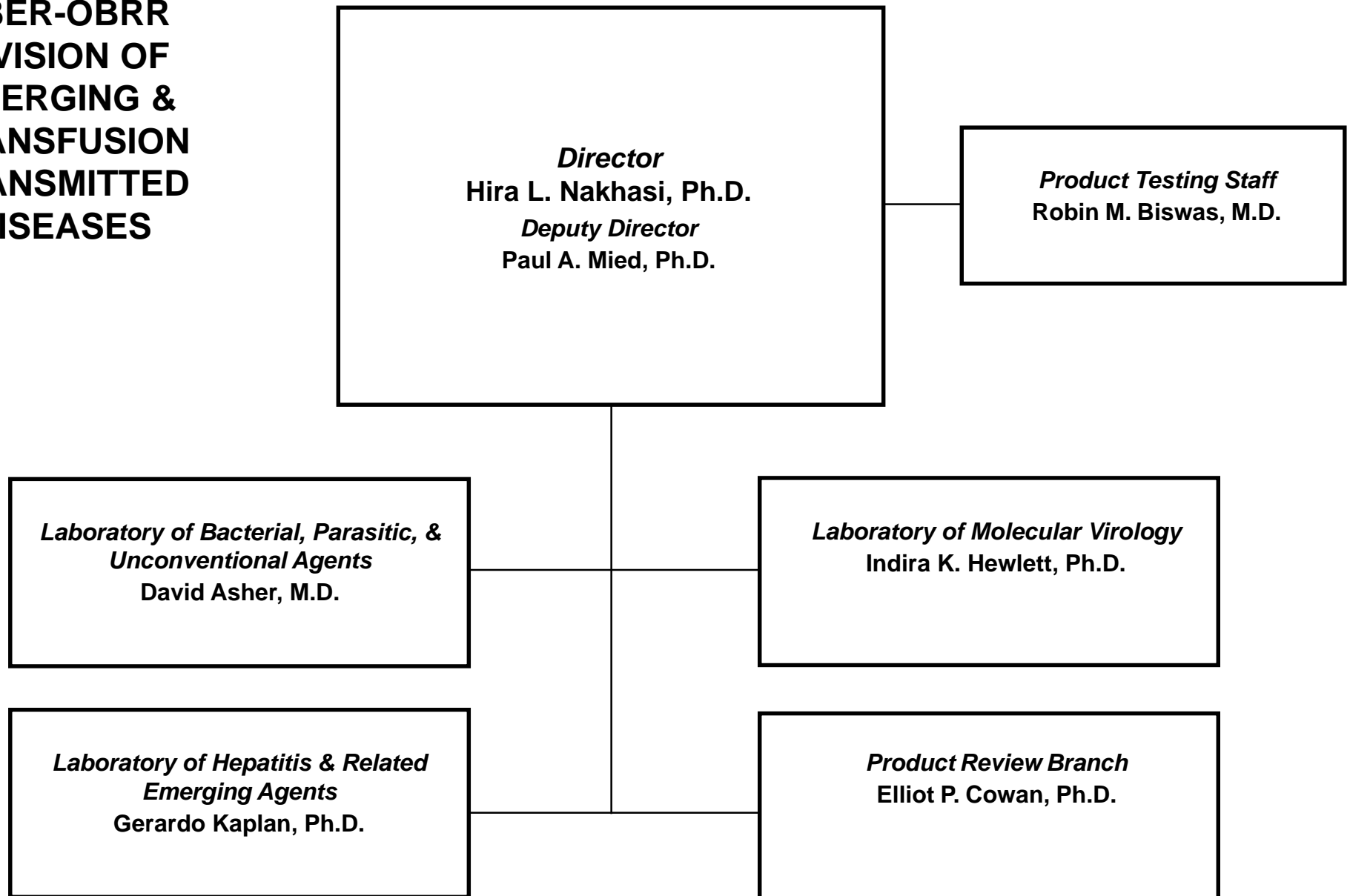
*Division of Information
Technology Development*
Nadia O. Davey

**CBER
OFFICE OF BLOOD
RESEARCH AND
REVIEW**



*Acting

**CBER-OBRR
DIVISION OF
EMERGING &
TRANSFUSION
TRANSMITTED
DISEASES**



**CBER-OBRR
DIVISION OF
HEMATOLOGY**

Director
Basil Golding, M.D.
Deputy Director
***Jaroslav G. Vostal, M.D., Ph.D.**
Deputy Director of Operations
Susan L. Abbondanzo, M.D.

***Laboratory of Cellular
Hematology***
Jaroslav G. Vostal, M.D., Ph.D.

Laboratory of Hemostasis
***Timothy K. Lee, Ph.D.**

***Laboratory of Plasma
Derivatives***
Dorothy E. Scott, M.D.

Clinical Review Branch
Toby A. Silverman, M.D.

***Laboratory of Biochemistry
and Vascular Biology***
Abdu Alayash, Ph.D.

**CBER-OBRR
DIVISION OF BLOOD
APPLICATIONS**

Director
***Elizabeth G. Callaghan**
Deputy Director
Elizabeth G. Callaghan

Blood and Plasma Branch
Leslie G. Holness, M.D.

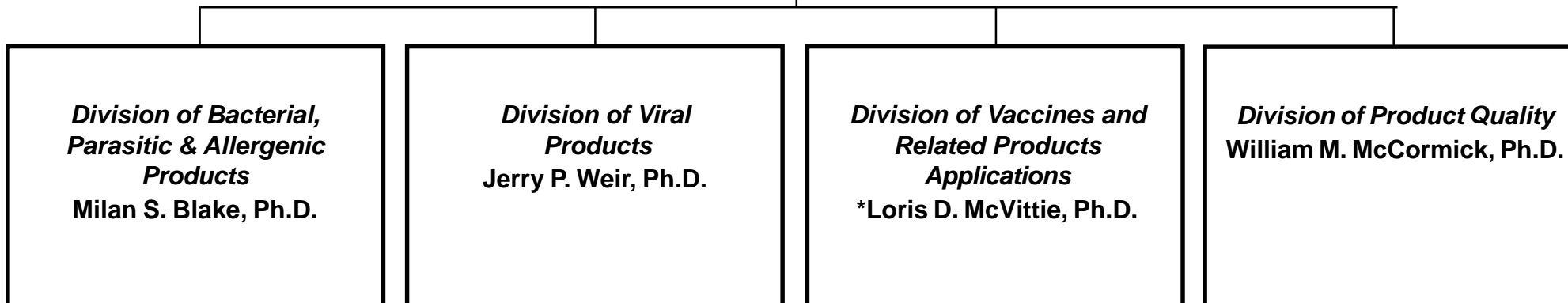
*Regulatory Product Management
Branch*
Jeffrey M. Anderson

Devices Review Branch
Sheryl A. Kochman

**CBER
OFFICE OF VACCINES
RESEARCH AND
REVIEW**

Director
Norman W. Baylor, Ph.D.
Deputy Director
Florence Houn, M.D.
Associate Director for Regulatory Policy
Marion F. Gruber, Ph.D.
Associate Director for Science
(Vacant)
Associate Director, Management & Scientific Affairs
Erik A. Henschel, Ph.D.
Associate Director for Quality Assurance
(Vacant)
Special Assistant for Communication
Maureen A. Hess, M.P.H.
Program Manager
Linda H. Shone

Program Operation Staff
Linda H. Shone



*Acting

**CBER-OVRR
DIVISION OF
BACTERIAL, PARASITIC
& ALLERGENIC
PRODUCTS**

Director
Milan S. Blake, Ph.D.
Deputy Director
Jay E. Slater, M.D.

Laboratory of Immunobiochemistry
***Jay E. Slater, M.D.**

Laboratory of Bacterial Polysaccharides
Willie F. Vann, Ph.D.

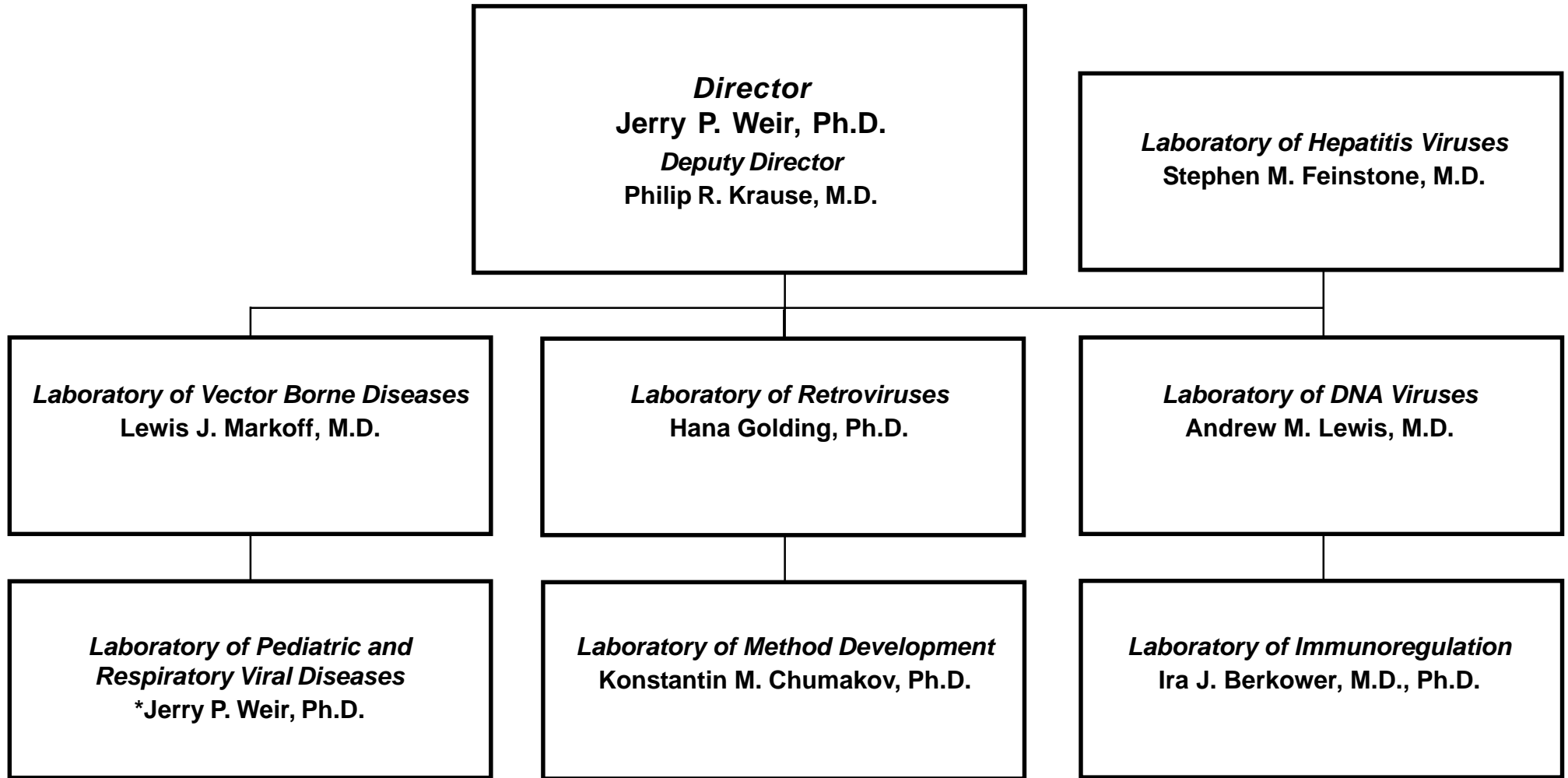
Laboratory of Mycobacterial Diseases & Cellular Immunology
Sheldon L. Morris, Ph.D.

Laboratory of Respiratory and Special Pathogens
Drusilla L. Burns, Ph.D.

Laboratory of Enteric and Sexually Transmitted Diseases
Dennis J. Kopecko, Ph.D.

Laboratory of Methods Development & Quality Control
(Vacant)

**CBER-OVRR
DIVISION OF VIRAL
PRODUCTS**



**CBER-OVRR
DIVISION OF
VACCINES AND
RELATED PRODUCTS
APPLICATIONS**

Director
***Loris D. McVittie, Ph.D.**
Deputy Director
***Lewis K. Schrage, M.D.**

CMC Review Branch 1
Loris D. McVittie, Ph.D.

CMC Review Branch 2
(Vacant)

CMC Review Branch 3
Paul G. Richman, Ph.D.

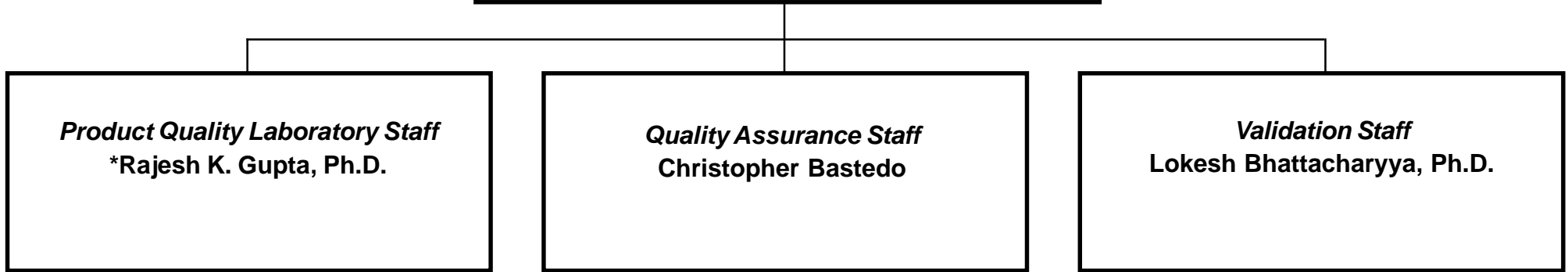
Clinical Review Branch 1
Douglas R. Pratt, M.D.

Clinical Review Branch 2
(Vacant)

Review Management Support Branch
(Vacant)

**CBER-OVRR
DIVISION OF
PRODUCT QUALITY**

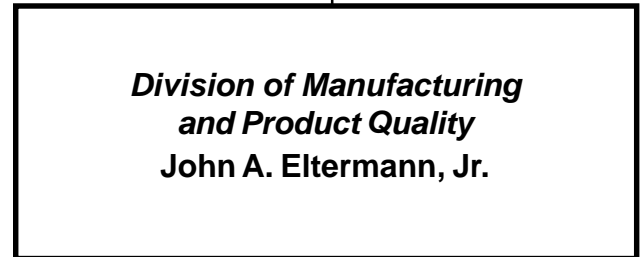
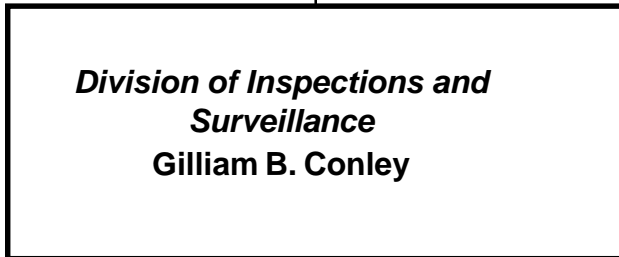
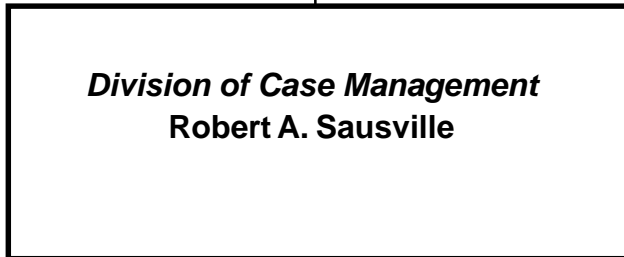
Director
William M. McCormick, Ph.D.



***Acting**

07/08.16

**CBER
OFFICE OF
COMPLIANCE AND
BIOLOGICS
QUALITY**



**CBER - OCBQ
DIVISION OF CASE
MANAGEMENT**

Director
Robert A. Sausville

*Advertising and Promotional Labeling
Branch*
Ele Ibarra-Pratt, R.N., B.S.N., M.P.H.

*Biological Drug & Device Compliance
Branch*
Diane S. Alexander

Blood and Tissue Compliance Branch
Stephany J. Wesley

**CBER - OCBQ
DIVISION OF
INSPECTIONS &
SURVEILLANCE**

Director
Gilliam B. Conley

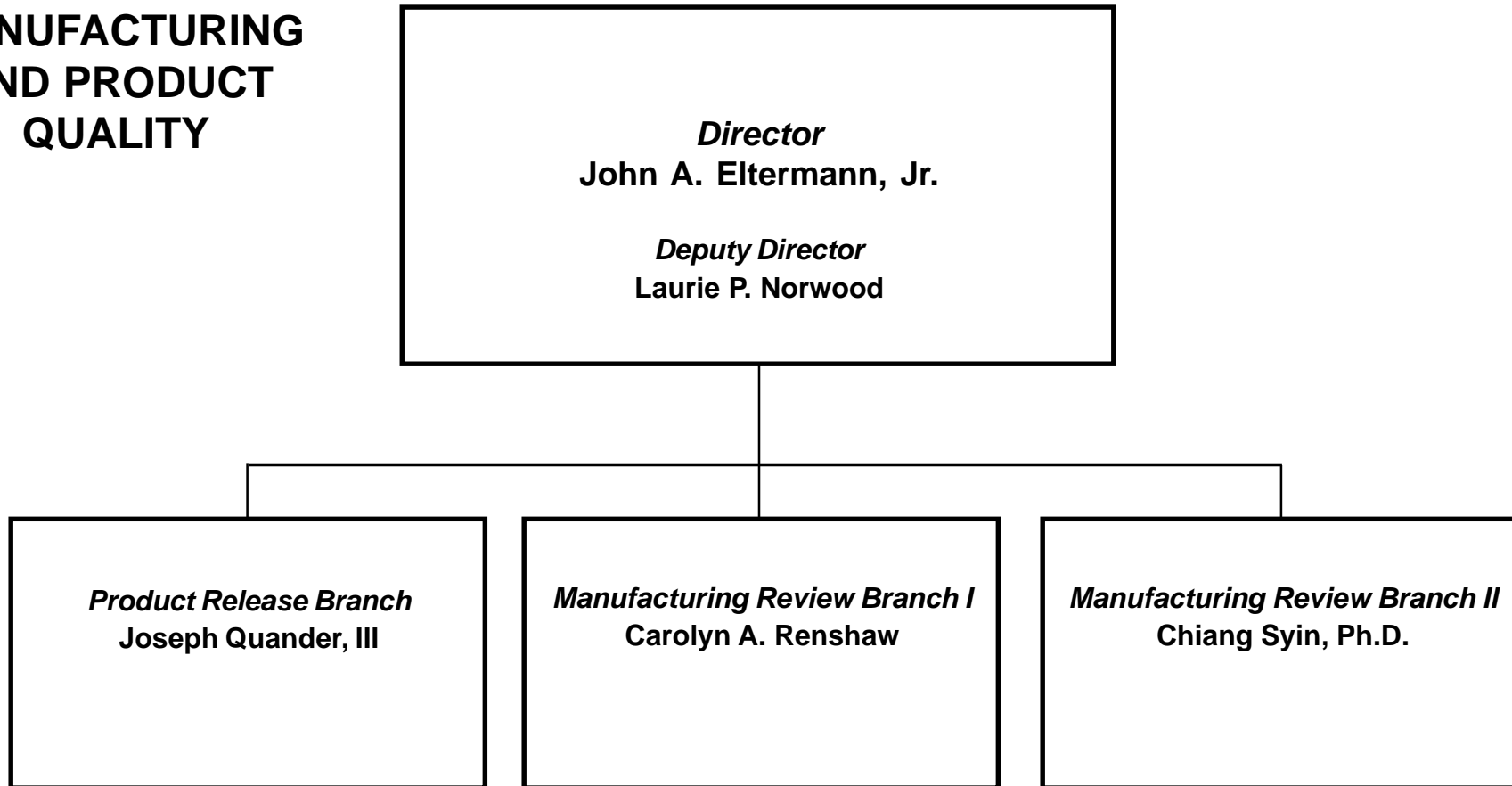
Bioresearch Monitoring Branch
Patricia A. Holobaugh

Program Surveillance Branch
Janet L. Ishimoto

Program Inspection Branch
(Vacant)

*Acting

**CBER - OCBQ
DIVISION OF
MANUFACTURING
AND PRODUCT
QUALITY**



**CBER
OFFICE OF CELLULAR,
TISSUE AND GENE
THERAPIES**

Director
Celia M. Witten, M.D., Ph.D.
Deputy Director
Stephanie L. Simek, Ph.D.
Associate Director for Research
Suzanne L. Epstein, Ph.D.
Associate Director for Policy
Richard D. McFarland, M.D.
Program Manager
Anne E. Wilcox

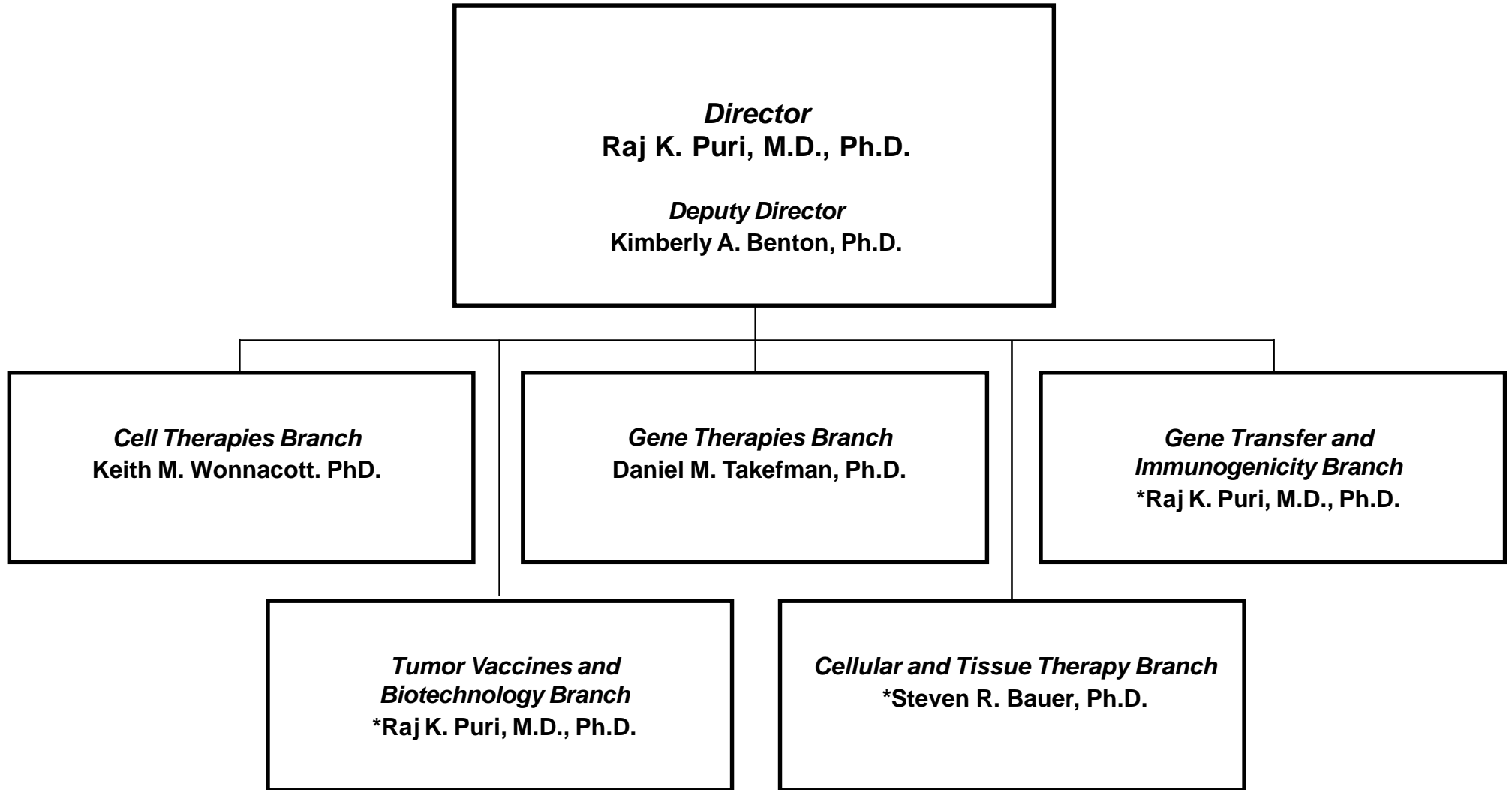
Regulatory Management Staff
***Stephanie L. Simek, Ph.D.**

***Division of Cellular and Gene
Therapies***
Raj K. Puri, M.D., Ph.D.

***Division of Clinical Evaluation and
Pharmacology/Toxicology***
Ashok K. Batra, M.D.

Division of Human Tissues
Ruth R. Solomon, M.D.

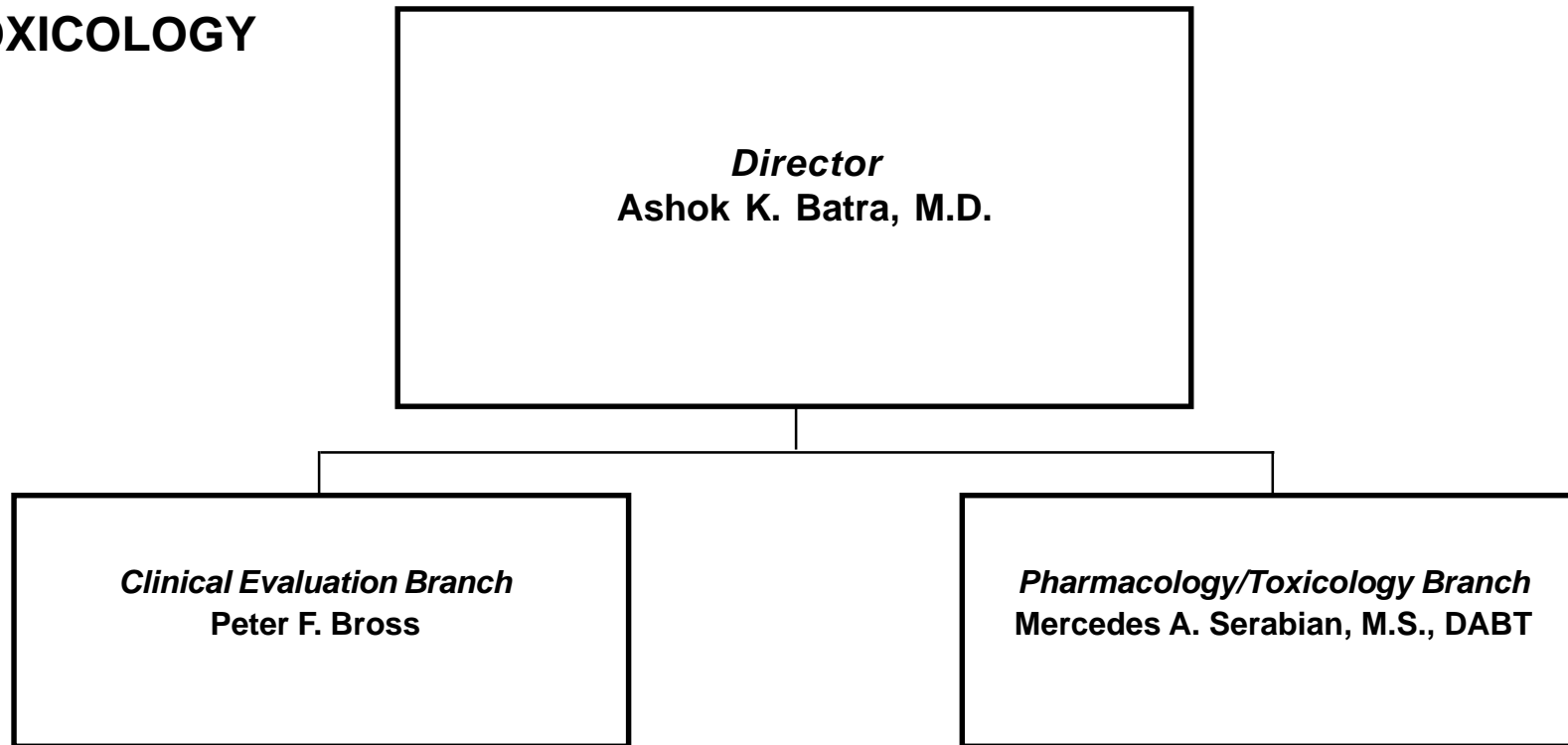
**CBER - OCTGT
DIVISION OF
CELLULAR AND GENE
THERAPIES**



*Acting

07/08.22

**CBER - OCTGT
DIVISION OF CLINICAL
EVALUATION AND
PHARMACOLOGY/
TOXICOLOGY**



**CBER - OCTGT
DIVISION OF
HUMAN TISSUES**

